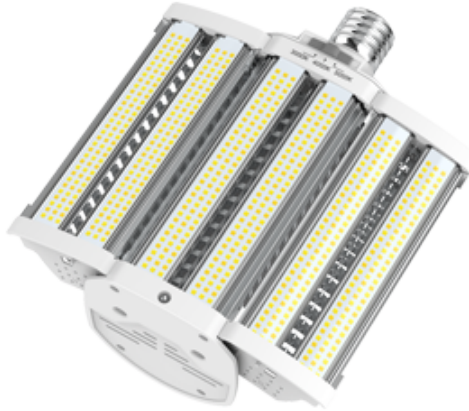


Project:

Type:

Prepared By:

Date:



UPC: 192552028707

Features and Benefits

- Replaces traditional metal halide or high pressure sodium HID lamp
- Adjustable CCT allows for in-field customization
- Integral driver enables lamp to be wired directly to line voltage without need for an external driver or ballast
- Rated for use in enclosed fixtures in dry or damp locations
- AUX port for integrating individual, lamp-level controls

Technical Specifications

Performance

Product Type:

HID Replacement

Description:

CCT field adjustable horizontal and expandable LED lamps that make great replacements for high output area lights

Wattage Equivalency:

400W Metal Halide

Input Wattage:

110W

Lumens:

15,400/16,500/15,950lm

Efficacy:

140/150/145lm/W

L70 Lifespan:

50,000-Hour LED lifespan based on IES LM-70 results

Electrical

THD:

≤20%

Power Factor:

≥0.9

Dimmable:

Yes

Input Voltage:

100-277V

Operating Frequency:

50/60Hz

Input Current @ 120V (mA):

945mA

Input Current @ 240V (mA):

504mA

Input Current @ 277V (mA):

441mA

Operating Temperature:

-22°F to 140°F (-30°C to 60°C)

Flicker:

<30%

Surge Protection:

4 kV

LED Characteristics

Color Temperature:

Field adjustable via dip switch 3000/4000/5000K

Color Accuracy (CRI):

≥80 CRI

R9 Value:

High color performance with R9 no greater than 0

Color Consistency:

<6-step MacAdam Ellipse binning to achieve consistent fixture-to-fixture color

Color Stability:

LED color temperature is warranted to Shift no more than 200K in color temperature over a 5-year period

Technical Specifications (continued)

Color Uniformity:

RAB's range of Correlated Color Temperature follows the guidelines of the American National Standard for Specifications for the Chromaticity of Solid State Lighting (SSL) Products, ANSI C78.377-2017.

Installation

Installation Method:

UL Type B, Ballast Bypass

Installation Orientation:

Horizontal

Base Type:

EX39 Exclusionary Mogul

Construction

Finish:

Clear

Shape:

Post Top

Endcap Material:

Metal

Enclosure Material:

Constructed from frosted, shatter-resistant polycarbonate

Compliance

Listings:

UL Listed, UL Classified

Environment:

Suitable for use in dry and damp environments

Fixture Rating:

Suitable for use in enclosed fixtures

IP Rating:

IP64

Energy Star Approved:

No.

There is no product category on Energy Star for this lamp to qualify under.

Certification Model Number:

H20045(HIDFA-110-H-EX39-8CCT-BYP/5SP)

T20 Compliant:

Not compliant

California Title 24 JA8 Compliant:

Not Compliant

California Energy Commission (CEC) Status:

Lawful for Sales in California

RoHS:

Mercury and UV free. RoHS-compliant components.

FCC:

Complies with Part 15B of the FCC Rules

DLC Listed:

This product family is listed with the DesignLights Consortium (DLC). Individual SKUs within this family may carry either a DLC Standard or DLC Premium qualification. Please refer to the individual product specification sheet or the DLC Qualified Products List (QPL) at designlights.org to confirm the qualification status of a specific SKU prior to specification or purchase.

Other

Accessories:

[XFMR200-480-277](#)

Transformer 200W 480V

[SP10KV](#)

10 kV Surge protector

Case and Pallet Dimensions

	QTY	LENGTH (in)	WIDTH (in)	HEIGHT (in)
CASE	6	17.52	13.27	14
PALLET	144	45.28	35.43	41.34

Dimension

