

# Photometric Test Report

## Relevant Standards

- IES LM-79-2008
- ANSI C82.77:2017

## Prepared For RAB Lighting Inc.

Room 6A33, No.1388, Wuzhong road, Shanghai, China

Xiao Xiang, 15921313292, Gary.Xiao@rabweb.com

## Prepared By

Deliver Co., Ltd.

Block 11, 78 Keling Road, SSTP, Suzhou, China

0512-66801950, kevin.jia@szdeliver.com

## Project Number

DLF2102103

## Report Number

DLF2102103-1a

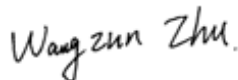
## Test Date

2021/2/6

## Issue Date

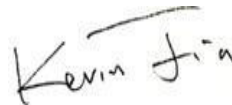
2021/3/16

### Prepared By



Wangzun Zhu

### Approved By



Kevin Jia

The results contained in this report pertain only to the tested sample.

This report shall not be reproduced, except in full, without written approval of Deliver Co., Ltd.

This report must not be used by the client to claim product certification, approval, or endorsement by NVLAP.

## 1.0 Test Summary

DLC Technical Requirements v5.1

<b>Outdoor - Pole/Arm-Mounted Decorative Luminaires</b>				
<b>Requirement Category</b>	<b>Test Method</b>	<b>Requirements</b>		<b>Test value</b>
Luminaire Output (lm) (Goniophotometer - Section 4.2)	IES LM-79-2008	1000		3395
Minimum Luminaire Efficacy (lm/W) (Goniophotometer - Section 4.2)	IES LM-79-2008	Standard 105	Premium 120	128.7
Power (Input Wattage) (W) (Goniophotometer - Section 4.2)	IES LM-79-2008	Wrost Case		26.4
Total Harmonic Distortion (A%) (THD & PF - section 4.3)	ANSI C82.77:2014	20.00%	120V	5.67%
		20.00%	277V	6.72%
Power Factor (THD & PF - section 4.3)	ANSI C82.77:2014	0.9	120V	0.996
		0.9	277V	0.964
Allowable CCTs* (K) (Integrating Sphere - Section 4.1)	IES LM-79-2008	7 step	3045±175	2947
		4 step	3045±100	
Minimum CRI (Integrating Sphere - Section 4.1)	IES LM-79-2008 CIE 13.3-1995	≥70		70
Minimum R9 (Integrating Sphere - Section 4.1)	IES LM-79-2008 CIE 13.3-1995	≥-40		-31
Minimum Rf (Integrating Sphere - Section 4.1)	ANSI/IES TM-30-18	≥70		73
Minimum Rg (Integrating Sphere - Section 4.1)	ANSI/IES TM-30-18	≥89		95
Minimum IES Rcs,h1 (Integrating Sphere - Section 4.1)	ANSI/IES TM-30-18	-18% ≤ IES Rcs,h1 ≤ +23%		-16%
Zonal Lumen Requirement (0°-90°) (Goniophotometer - Section 4.2)	IES LM-79-2008	≥65%		100.00%
<b>Input Voltage (V)</b>				
(Goniophotometer - Section 4.2)	IES LM-79-2008	Wrost Case		277
(Goniophotometer - Section 4.2)		Non-Wrost Case		120
<b>Input Current (A)</b>				
(Goniophotometer - Section 4.2)	IES LM-79-2008	Wrost Case		0.100
(Goniophotometer - Section 4.2)		Non-Wrost Case		0.223
<b>Power (Input Wattage - W)</b>				
(Goniophotometer - Section 4.2)	IES LM-79-2008	Wrost Case		26.4
(Goniophotometer - Section 4.2)		Non-Wrost Case		26.3

## 2.0 Test List

Test Item	Test	Test Date	Model Number	Sample No.
1	Integrating Sphere Test	2021/2/6	ALED5T26Y/D10	A1
2	Goniophotometer Test	2021/2/6	ALED5T26Y/D10	A1
3	THD and PF Test	2021/2/6	ALED5T26Y/D10	A1

### Remark(If any)

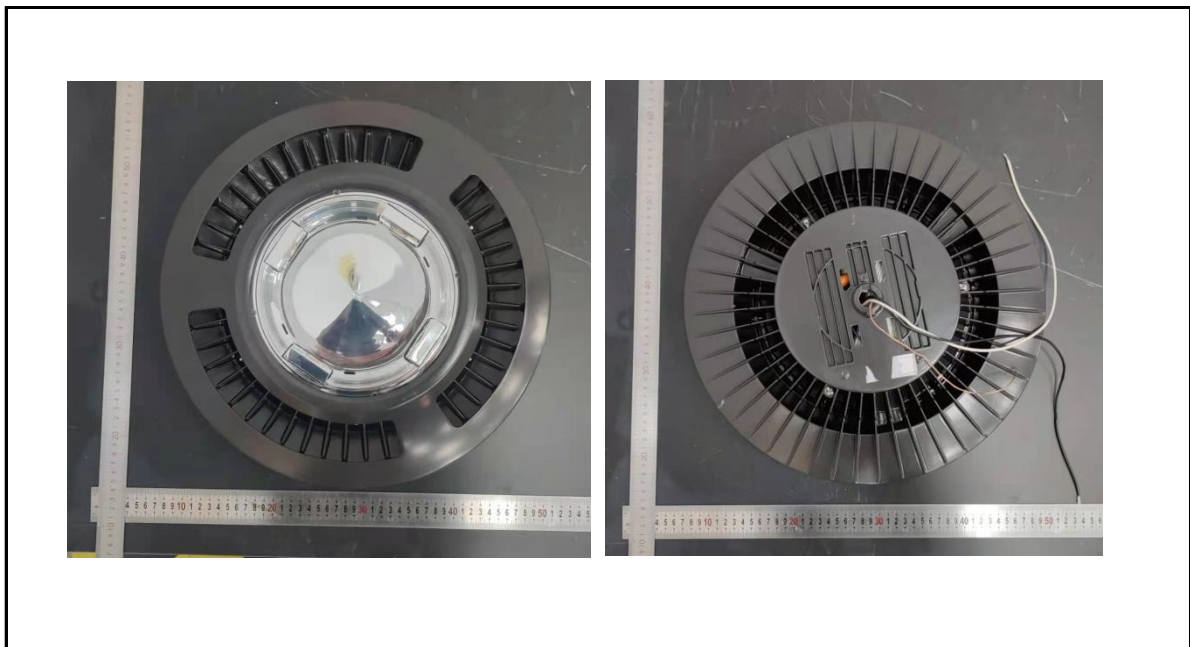
- 1、 This report shall not be used by the client to claim product endorsement by NVLAP, NIST or any agency of the US government.
- 2、 The results reported herein have been performed in accordance with the laboratory's terms of accreditation. This report shall not be reproduced except in full without the written approval of the Laboratory. The results in this report apply to the test sample(s) mentioned above at the time of the testing period only and are not to be used to indicate applicability to other similar products. This report does not imply that the product(s) has met the criteria for certification.

## 3.0 Production Description

**Luminaire Description:** ALED5T26Y/D10

**Electrical Specification:** 120V-277V,50/60HZ

### Photos of Luminaire Characteristics



## 4.0 LM-79 Measurement and Test Results

### 4.1 Integrating Sphere Test

Model No.	ALED5T26Y/D10	Sample ID.	A1
Operate time (Min.)	90	Stabilization time (Min.)	45
Temperature (°C)	25.3	Humidity (%RH)	56.0

#### Test Method

The samples were tested according to the IES LM-79-2008.

Photometric parameters were measured using an integrating sphere, a spectroradiometer and software. The ambient temperature condition inside the sphere was maintained at 25° C ± 1° C.

The sample measurements were made using a spectroradiometer connected by a fiber optic cable and detector through the detector port of the integrating sphere.

The voltage of an AC power supply (RMS voltage) or DC power supply (instantaneous voltage) applied to the device under test shall be regulated to within ±0.2 percent under load.

The sample was measured using 4π geometry and operated at rated voltage and was stabilized before measurement. Chromaticity coordinates, correlated color temperature and color rendering index were calculated from the spectral radiant flux measurements taken at 1 nm intervals over the range of 380 to 780 nm.

#### Test Result

Voltage (Vac)	Frequency (Hz)	Current (A)	Power (W)	Power Factor
120.01	60	0.220	26.3	0.996
277.01	60	0.098	26.3	0.964

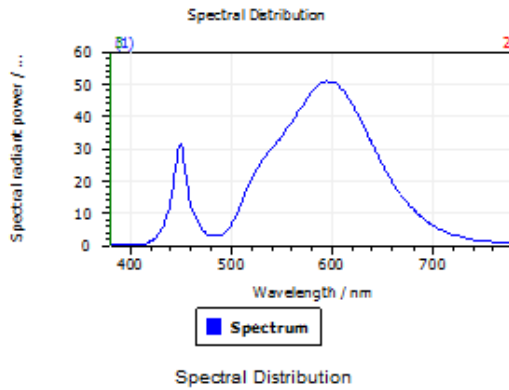
#### Test Result

CCT (K)	CRI	R9	Duv
2947	70	-31	0.0022

Rf	Rg	IES Rcs,h1
73	95	-16%

## 4.1 Integrating Sphere Test

### Results



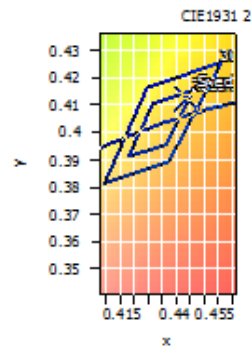
#### Spectral values

DominantWavelength	582.32 nm
Purity	0.570
PeakWavelength	595.86 nm
Radiant Power	7.03 W
Width50%:	

Date: 2021/2/5 17:10:52

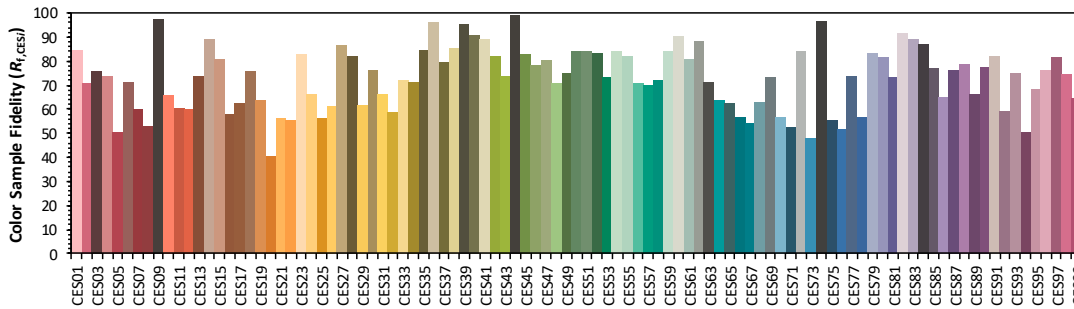
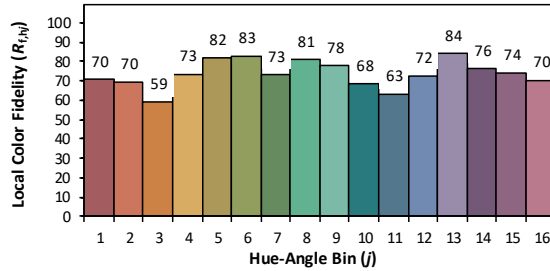
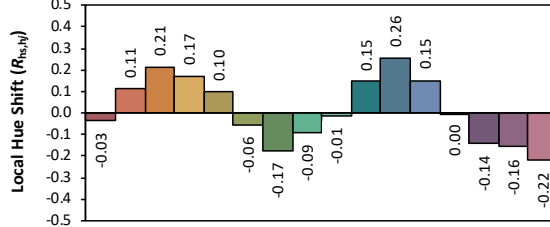
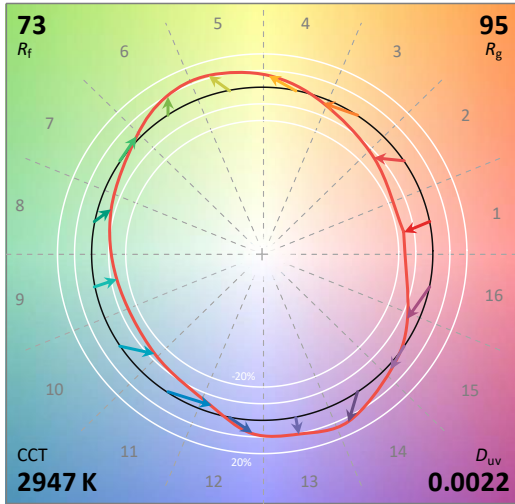
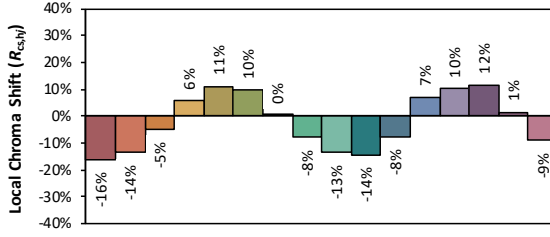
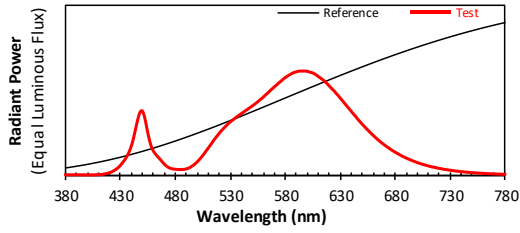
#### Color Coordinates

Correlated Color Temperatu	2947 K		
x:	0.4441	u:	0.2517
y:	0.4121	v:	0.3504
		v:	0.5258
CRI01	67.1	CRI09	-30.7
CRI02	79.2	CRI10	51.1
CRI03	89.7	CRI11	61.0
CRI04	67.6	CRI12	38.1
CRI05	65.0	CRI13	68.9
CRI06	70.0	CRI14	93.7
CRI07	79.2	CRI15	59.8
CRI08	45.5	CRI16	59.9
ResultsCRI	70.4		



PlankDistance 2.2E-003

### 4.1 Integrating Sphere Test



**Notes:** This is a recommended method for displaying ANSI/IES TM-30-18 information.

$x$  0.4441  
 $y$  0.4121  
 $u'$  0.2517  
 $v'$  0.5256

CIE 13.3-1995 (CRI)	
R <sub>a</sub>	70
R <sub>g</sub>	-31

## 4.0 LM-79 Measurement and Test Results

### 4.2 Goniophotometer Test

Model No.	ALED5T26Y/D10	Sample ID.	A1
Operate time (Min.)	90	Stabilization time (Min.)	45
Temperature (°C)	25.3	Humidity (%RH)	54.0

#### Test Method

The samples were tested according to the IES LM-79-2008.

Photometric parameters were measured using a type C goniophotometer and software.

The ambient temperature shall be maintained at 25° C ± 1° C, measured at a point not more than 1 m from the sample and at the same height as the sample.

The voltage of an AC power supply (RMS voltage) or DC power supply (instantaneous voltage) applied to the device under test shall be regulated to within ±0.2 percent under load.

The samples were operated at rated voltage and was stabilized before measurement. Luminous flux, luminaire efficacy, zonal lumen were calculated from the software taken at 0.5° vertical intervals and 10° horizontal intervals.

#### Test Conditions

Condition	Voltage (Vac)	Frequency (Hz)	Current (A)	Power (W)	Power Factor
WROST CASE	277.03	60	0.100	26.4	0.950
NON-WROST CASE	120.02	60	0.223	26.3	0.982

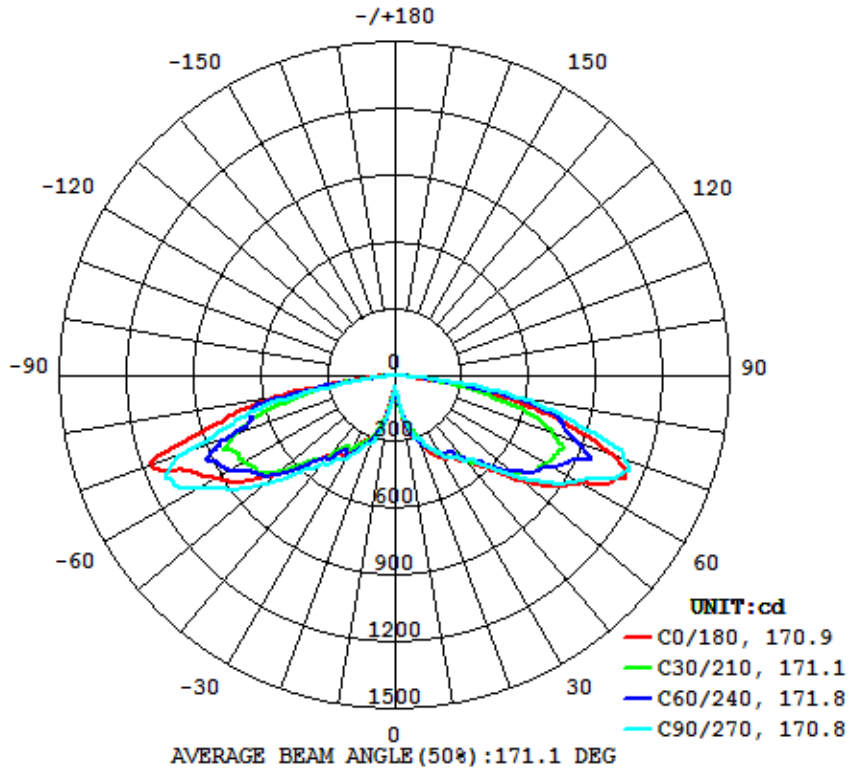
#### Test Result

Flux (lm)	Field Angle(10%)		Beam Angle(50%)		Luminous Efficacy (lm/W)
	C0-180	C90-270	C0-180	C90-270	
3395	174.7	174.5	170.9	170.8	128.7

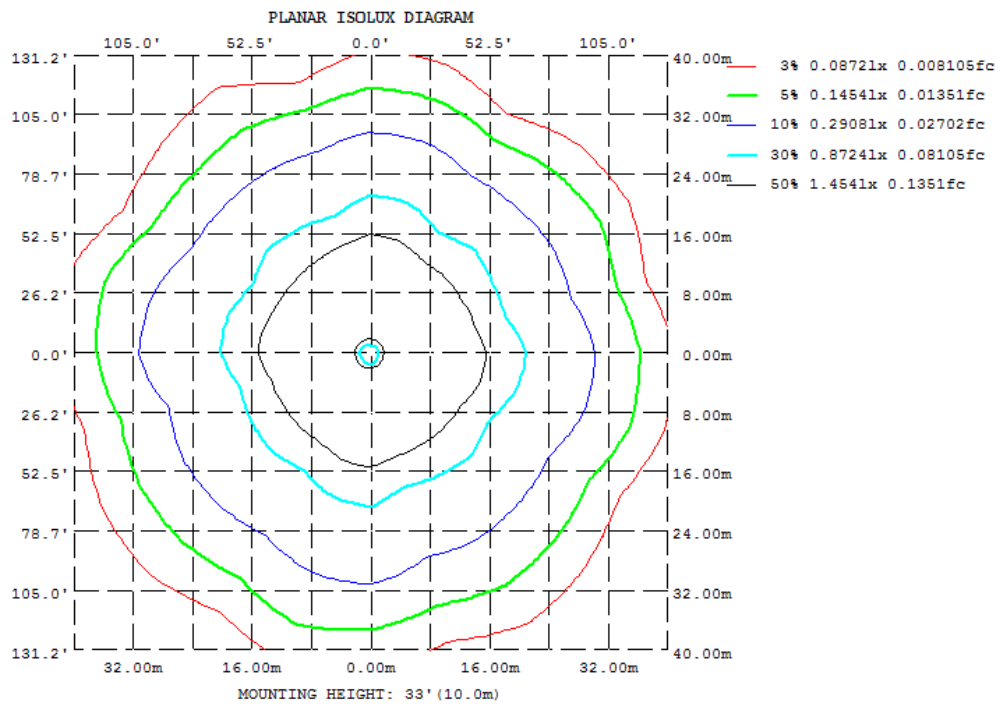
Zonal Lumen Requirement (0°-90°)	BUG rating
100.00%	B2-U0-G1

## 4.2 Goniophotometer Test

### Light Distrubtion Curve



### Isolux Plot



## 4.2 Goniophotometer Test

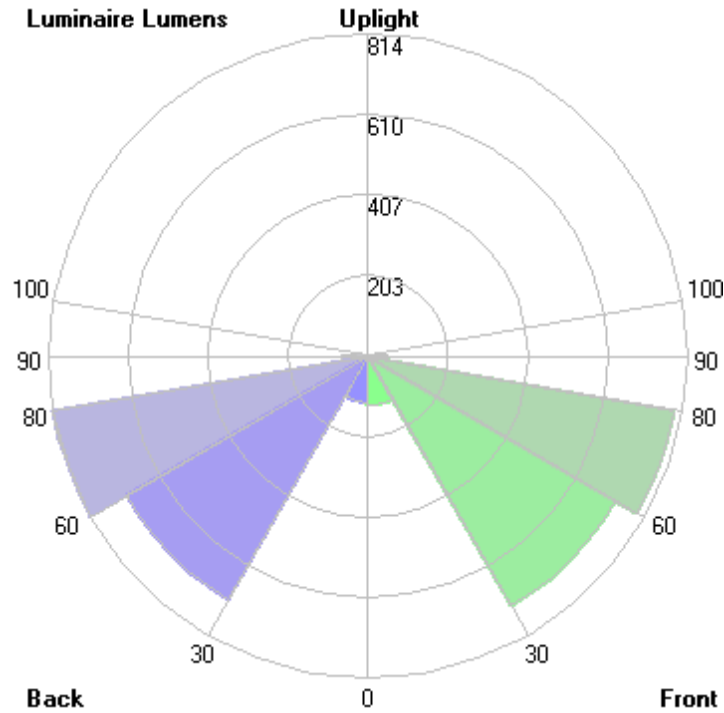
### Zonal Lumen Summary

$\gamma$	C0	C45	C90	C135	C180	C225	C270	C315
10	158.5	133.4	101.7	105.1	100.1	128.0	150.7	159.8
20	297.1	314.9	299.2	299.7	299.7	273.0	323.9	306.6
30	432.1	416.3	406.2	393.0	383.4	428.1	430.9	431.8
40	500.7	495.3	498.6	468.4	480.1	464.1	523.2	486.6
50	740.3	688.7	707.9	659.9	685.1	691.8	761.3	694.5
60	976.1	833.2	949.7	799.0	930.3	851.9	1015	863.6
70	1032	819.5	1094	884.5	1159	765.3	972.0	738.1
80	349.9	468.4	548.1	511.8	509.7	404.2	296.7	334.0
90	0	0	0	0	0	0	0	0
100	0	0	0	0	0	0	0	0
110	0	0	0	0	0	0	0	0
120	0	0	0	0	0	0	0	0
130	0	0	0	0	0	0	0	0
140	0	0	0	0	0	0	0	0
150	0	0	0	0	0	0	0	0
160	0	0	0	0	0	0	0	0
170	0	0	0	0	0	0	0	0
180	0	0	0	0	0	0	0	0
DEG	LUMINOUS INTENSITY: cd							

	Zonal (lm)	Total (lm)	Percent	
0-10	8.46	0 - 10	8.46	0.25%
10-20	68.09	0 - 20	76.55	2.25%
20-30	165.53	0 - 30	242.08	7.13%
30-40	278.50	0 - 40	520.58	15.33%
40-50	454.60	0 - 50	975.18	28.72%
50-60	703.46	0 - 60	1678.64	49.45%
60-70	904.18	0 - 70	2582.82	76.08%
70-80	699.99	0 - 80	3282.81	96.70%
80-90	112.09	0 - 90	3394.90	100.00%
90-100	0.00	0 - 100	3394.90	100.00%
100-110	0.00	0 - 110	3394.90	100.00%
110-120	0.00	0 - 120	3394.90	100.00%
120-130	0.00	0 - 130	3394.90	100.00%
130-140	0.00	0 - 140	3394.90	100.00%
140-150	0.00	0 - 150	3394.90	100.00%
150-160	0.00	0 - 160	3394.90	100.00%
160-170	0.00	0 - 170	3394.90	100.00%
170-180	0.00	0 - 180	3394.90	100.00%

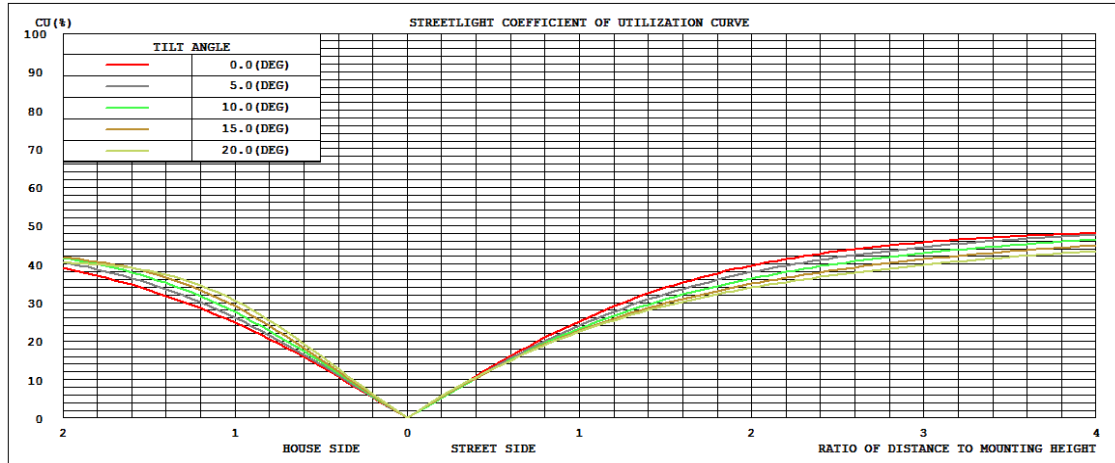
## 4.2 Goniophotometer Test

LCS/BUG

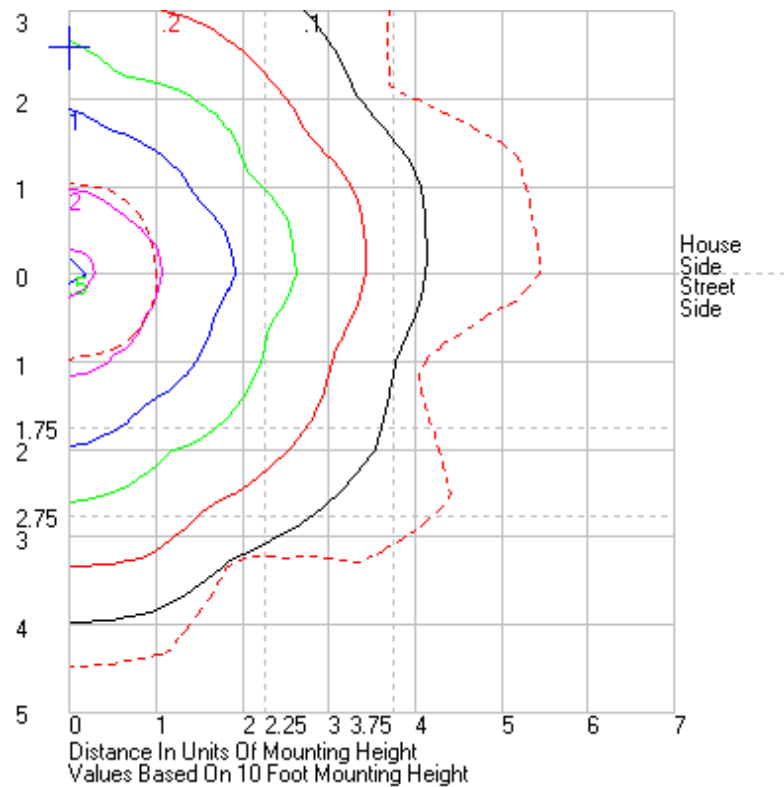


	Lumens	% Lamp	% Luminaire
FL - Front-Low (0-30)	125.0	N.A.	3.7
FM - Front-Medium (30-60)	727.6	N.A.	21.4
FH - Front-High (60-80)	790.5	N.A.	23.3
FVH - Front-Very High (80-90)	48.2	N.A.	1.4
BL - Back-Low (0-30)	117.1	N.A.	3.5
BM - Back-Medium (30-60)	708.9	N.A.	20.9
BH - Back-High (60-80)	813.6	N.A.	24.0
BVH - Back-Very High (80-90)	63.9	N.A.	1.9
UL - Uplight-Low (90-100)	0.0	N.A.	0.0
UH - Uplight-High (100-180)	0.0	N.A.	0.0
<b>Total</b>	<b>3394.8</b>	<b>N.A.</b>	<b>100.0</b>
<b>BUG Rating</b>	<b>B2-U0-G1</b>		

**Coefficients of Utilization**



**Isolines**



	<b>0</b>	<b>15</b>	<b>30</b>	<b>45</b>	<b>60</b>	<b>75</b>	<b>90</b>	<b>105</b>	<b>120</b>	<b>135</b>
<b>0</b>	49.77	49.77	49.77	49.77	49.77	49.77	49.77	49.77	49.77	49.77
<b>1</b>	55.13	54.53	53.99	53.03	52.05	50.65	48.90	47.47	46.23	45.42
<b>2</b>	62.16	62.53	61.80	58.98	56.70	54.41	52.89	50.62	47.87	46.67
<b>3</b>	68.88	70.11	68.23	64.38	60.59	58.54	57.25	56.61	54.30	51.61
<b>4</b>	75.80	75.40	74.06	69.07	65.22	62.90	62.60	63.24	60.24	57.37
<b>5</b>	80.27	80.13	77.99	72.22	70.24	68.93	70.14	70.05	66.52	62.06
<b>6</b>	84.86	84.30	81.67	78.09	77.56	74.17	76.24	74.06	70.79	68.28
<b>7</b>	91.10	87.87	87.10	84.69	85.80	81.77	79.50	77.67	75.32	74.51
<b>8</b>	104.03	97.38	95.53	93.73	93.73	87.75	83.39	82.22	81.11	82.71
<b>9</b>	128.86	114.04	114.18	111.05	106.06	96.21	88.18	86.24	87.99	93.05
<b>10</b>	158.55	138.69	140.60	133.44	123.22	112.62	101.69	98.03	103.81	105.06
<b>11</b>	188.24	168.45	169.13	157.87	148.33	137.22	128.80	120.46	124.21	125.16
<b>12</b>	216.98	197.43	195.46	182.30	173.59	163.54	159.50	151.70	148.03	149.82
<b>13</b>	237.22	221.77	217.17	208.38	201.61	187.84	190.20	183.09	171.89	174.50
<b>14</b>	253.26	238.94	237.50	226.77	225.01	210.06	215.61	211.93	194.64	200.10
<b>15</b>	266.44	258.87	250.99	242.53	244.39	239.03	237.84	237.23	220.25	216.56
<b>16</b>	281.45	282.53	259.75	258.61	263.41	254.26	254.60	258.75	238.67	239.17
<b>17</b>	287.05	294.82	260.37	272.04	277.69	267.55	273.52	273.60	255.47	258.09
<b>18</b>	284.63	290.57	267.29	282.65	288.61	271.79	297.46	283.50	266.04	281.39
<b>19</b>	286.86	289.76	274.25	297.79	299.16	272.88	301.14	286.27	279.52	294.89
<b>20</b>	297.08	296.54	289.72	314.87	313.82	282.51	299.18	289.77	289.96	299.67
<b>21</b>	316.50	312.14	308.43	321.85	326.02	296.34	305.23	293.78	300.60	298.83
<b>22</b>	335.30	327.93	326.37	331.23	336.02	312.81	318.06	303.70	310.99	303.04
<b>23</b>	350.49	344.19	342.80	344.65	347.39	329.80	332.53	316.48	317.31	315.15
<b>24</b>	367.34	358.73	354.94	356.27	354.14	343.23	347.97	333.00	329.27	332.09
<b>25</b>	383.74	373.10	364.63	366.18	360.57	353.68	357.78	353.22	342.69	343.40
<b>26</b>	394.71	385.81	374.05	369.24	373.92	364.60	370.82	379.65	356.31	352.44
<b>27</b>	402.23	401.34	380.57	372.11	381.68	372.58	377.31	400.16	369.31	358.28
<b>28</b>	413.12	415.49	392.26	381.87	387.49	385.51	386.58	413.08	378.25	364.66
<b>29</b>	423.41	430.83	404.43	392.70	394.12	397.49	395.51	421.99	385.35	379.71
<b>30</b>	432.11	440.07	406.52	416.26	406.93	415.62	406.23	432.72	390.27	393.02
<b>31</b>	439.51	448.28	418.20	436.77	426.33	427.79	425.72	443.35	395.31	430.91
<b>32</b>	445.07	459.26	434.40	436.01	423.27	429.24	437.45	451.10	411.05	448.18
<b>33</b>	446.57	460.15	429.34	439.58	417.35	439.53	448.43	461.92	425.10	447.74
<b>34</b>	449.58	462.68	423.93	439.76	420.64	441.39	454.20	467.63	417.70	445.33
<b>35</b>	450.87	473.16	424.55	438.15	424.60	429.49	455.33	470.50	412.61	443.00
<b>36</b>	464.98	479.24	428.95	438.01	431.37	425.95	454.67	478.81	405.39	437.55
<b>37</b>	487.02	478.71	438.76	445.28	441.73	429.70	460.74	483.04	407.50	436.69
<b>38</b>	495.81	486.87	456.70	464.42	460.92	440.04	479.67	479.31	415.49	438.26
<b>39</b>	494.17	493.86	482.55	479.87	479.09	460.00	497.89	484.73	437.41	451.97
<b>40</b>	500.67	500.63	505.54	495.29	494.52	481.56	498.61	495.08	461.33	468.36
<b>41</b>	518.91	514.82	525.95	503.25	505.38	506.34	499.67	501.37	487.65	484.94
<b>42</b>	543.61	536.30	539.26	514.49	512.75	527.88	512.25	512.81	510.95	496.46
<b>43</b>	560.18	561.79	549.61	530.41	524.87	551.70	534.55	529.54	527.23	507.96
<b>44</b>	578.10	590.58	561.43	554.73	540.95	567.10	567.73	556.16	542.70	525.06
<b>45</b>	600.91	621.82	578.88	577.91	564.63	576.95	581.88	578.42	554.74	545.52
<b>46</b>	622.28	648.42	600.99	606.13	587.34	595.09	603.85	608.73	571.51	569.30
<b>47</b>	646.63	676.94	621.69	631.98	613.22	612.95	631.04	641.83	590.17	595.10
<b>48</b>	678.03	688.30	645.49	654.11	639.00	633.89	654.38	667.22	609.33	618.93
<b>49</b>	713.53	697.35	669.26	674.98	659.53	661.50	683.44	688.34	636.60	642.54
<b>50</b>	740.32	710.95	685.77	688.68	679.60	682.44	707.88	697.98	657.88	659.85
<b>51</b>	767.02	735.16	704.52	700.82	694.05	705.75	738.14	709.21	678.36	677.06
<b>52</b>	798.15	757.42	720.29	715.93	709.23	723.41	766.57	728.51	695.88	688.02
<b>53</b>	823.13	783.95	732.19	736.32	726.89	740.40	788.99	750.52	713.05	701.41
<b>54</b>	852.41	815.95	744.44	741.15	747.51	758.09	820.87	778.96	724.60	721.25
<b>55</b>	878.53	844.69	759.30	746.27	758.08	773.52	841.38	804.89	737.87	732.95
<b>56</b>	896.16	869.27	766.60	758.20	766.80	791.58	873.75	838.73	750.78	735.56

57	910.86	885.54	768.02	770.87	775.61	804.51	897.32	867.87	761.79	749.32
58	929.68	907.93	767.19	786.89	788.08	810.01	910.96	883.56	768.98	764.75
59	949.10	926.91	778.11	806.73	810.79	814.68	932.63	901.13	769.69	775.92
60	976.05	937.17	787.59	833.20	826.79	810.61	949.70	932.56	772.39	798.98
61	1009.14	940.95	794.95	849.05	841.64	812.80	966.69	946.55	779.42	818.50
62	1046.26	960.30	798.48	879.77	853.22	818.07	989.74	957.55	783.46	841.94
63	1070.13	980.34	801.59	910.63	867.06	824.87	1020.06	973.91	791.35	869.90
64	1085.93	1001.67	805.92	915.20	872.22	836.95	1064.27	994.96	803.75	905.33
65	1104.32	1015.66	807.52	942.14	892.42	845.54	1087.85	1018.83	812.05	930.25
66	1130.73	1036.47	819.79	987.24	933.50	848.74	1100.42	1042.87	826.33	956.94
67	1121.64	1027.29	810.96	968.81	950.52	860.54	1116.12	1065.07	845.17	1005.91
68	1095.20	995.95	787.95	916.02	923.80	843.03	1127.51	1074.25	830.54	983.85
69	1073.48	969.70	767.45	873.16	895.65	823.60	1116.97	1054.56	804.50	927.47
70	1031.67	946.40	748.94	819.49	863.16	812.02	1093.57	1031.74	798.95	884.53
71	974.73	919.15	725.01	773.75	828.09	799.42	1085.40	1006.21	787.56	834.76
72	911.78	892.74	693.08	753.66	804.79	768.07	1032.61	973.23	755.04	786.89
73	847.86	865.30	668.72	745.30	791.42	736.06	961.38	938.58	733.18	761.23
74	802.08	823.15	632.74	723.45	771.05	710.63	891.67	919.09	705.14	756.88
75	746.10	744.65	587.47	688.97	772.85	673.26	826.57	890.43	671.66	746.17
76	678.60	668.06	517.53	658.95	742.03	627.31	786.97	843.15	631.26	728.30
77	611.81	600.22	458.83	611.43	686.91	535.60	722.32	759.01	567.08	698.77
78	532.53	544.76	405.44	574.96	635.51	476.27	671.94	680.51	492.95	649.49
79	445.58	478.35	353.78	530.59	575.73	416.74	628.42	615.17	422.49	586.01
80	349.90	399.29	302.65	468.37	482.95	355.62	548.14	531.39	358.87	511.77
81	257.50	298.85	258.73	414.74	398.40	309.67	469.77	459.66	314.13	448.69
82	147.74	191.97	202.96	320.60	305.40	254.33	368.85	364.84	263.39	376.43
83	66.51	100.95	134.08	221.36	225.63	183.72	244.50	241.12	210.71	289.60
84	44.06	54.40	70.84	132.04	133.24	117.24	150.28	147.66	146.31	188.70
85	21.95	31.43	44.88	57.44	61.18	51.67	59.61	63.56	71.39	98.15
86	8.28	8.46	19.17	38.09	39.47	30.41	40.01	40.74	45.79	55.55
87	4.82	4.41	4.85	19.80	18.75	9.42	20.48	19.29	20.49	31.40
88	2.23	2.23	2.60	8.47	7.43	5.15	6.80	5.96	6.20	7.26
89	0.58	0.71	0.92	5.29	4.38	2.70	3.96	3.51	3.56	4.23
90	0.00	0.00	0.00	0.00	0.00	0.00	0.00	0.00	0.00	0.00
91	0.00	0.00	0.00	0.00	0.00	0.00	0.00	0.00	0.00	0.00
92	0.00	0.00	0.00	0.00	0.00	0.00	0.00	0.00	0.00	0.00
93	0.00	0.00	0.00	0.00	0.00	0.00	0.00	0.00	0.00	0.00
94	0.00	0.00	0.00	0.00	0.00	0.00	0.00	0.00	0.00	0.00
95	0.00	0.00	0.00	0.00	0.00	0.00	0.00	0.00	0.00	0.00
96	0.00	0.00	0.00	0.00	0.00	0.00	0.00	0.00	0.00	0.00
97	0.00	0.00	0.00	0.00	0.00	0.00	0.00	0.00	0.00	0.00
98	0.00	0.00	0.00	0.00	0.00	0.00	0.00	0.00	0.00	0.00
99	0.00	0.00	0.00	0.00	0.00	0.00	0.00	0.00	0.00	0.00
100	0.00	0.00	0.00	0.00	0.00	0.00	0.00	0.00	0.00	0.00
101	0.00	0.00	0.00	0.00	0.00	0.00	0.00	0.00	0.00	0.00
102	0.00	0.00	0.00	0.00	0.00	0.00	0.00	0.00	0.00	0.00
103	0.00	0.00	0.00	0.00	0.00	0.00	0.00	0.00	0.00	0.00
104	0.00	0.00	0.00	0.00	0.00	0.00	0.00	0.00	0.00	0.00
105	0.00	0.00	0.00	0.00	0.00	0.00	0.00	0.00	0.00	0.00
106	0.00	0.00	0.00	0.00	0.00	0.00	0.00	0.00	0.00	0.00
107	0.00	0.00	0.00	0.00	0.00	0.00	0.00	0.00	0.00	0.00
108	0.00	0.00	0.00	0.00	0.00	0.00	0.00	0.00	0.00	0.00
109	0.00	0.00	0.00	0.00	0.00	0.00	0.00	0.00	0.00	0.00
110	0.00	0.00	0.00	0.00	0.00	0.00	0.00	0.00	0.00	0.00
111	0.00	0.00	0.00	0.00	0.00	0.00	0.00	0.00	0.00	0.00
112	0.00	0.00	0.00	0.00	0.00	0.00	0.00	0.00	0.00	0.00
113	0.00	0.00	0.00	0.00	0.00	0.00	0.00	0.00	0.00	0.00
114	0.00	0.00	0.00	0.00	0.00	0.00	0.00	0.00	0.00	0.00
115	0.00	0.00	0.00	0.00	0.00	0.00	0.00	0.00	0.00	0.00
116	0.00	0.00	0.00	0.00	0.00	0.00	0.00	0.00	0.00	0.00





177	0.00	0.00	0.00	0.00	0.00	0.00	0.00	0.00	0.00	0.00
178	0.00	0.00	0.00	0.00	0.00	0.00	0.00	0.00	0.00	0.00
179	0.00	0.00	0.00	0.00	0.00	0.00	0.00	0.00	0.00	0.00
180	0.00	0.00	0.00	0.00	0.00	0.00	0.00	0.00	0.00	0.00

**Vert. Angles**      **Horizontal Angles**

	<u>150</u>	<u>165</u>	<u>180</u>	<u>195</u>	<u>210</u>	<u>225</u>	<u>240</u>	<u>255</u>	<u>270</u>	<u>285</u>
0	49.77	49.77	49.77	49.77	49.77	49.77	49.77	49.77	49.77	49.77
1	45.81	46.86	48.68	50.38	52.12	53.18	54.18	56.79	58.17	56.31
2	47.30	49.30	51.39	53.76	56.46	58.04	60.64	63.91	64.39	63.24
3	52.29	55.97	57.46	58.84	60.47	62.91	66.75	69.44	71.22	71.10
4	57.65	63.04	63.53	63.91	64.53	67.77	72.60	75.29	76.18	76.19
5	62.77	68.95	70.04	68.68	70.66	72.76	75.52	79.12	80.26	78.95
6	68.90	73.90	75.47	73.71	75.52	77.02	79.16	80.33	82.80	83.80
7	74.58	77.75	79.00	77.72	80.48	82.82	84.73	86.26	87.77	92.22
8	81.44	81.63	82.89	82.41	87.80	91.16	95.53	97.36	99.76	110.84
9	90.83	90.85	87.06	90.00	101.57	106.36	115.00	119.49	127.43	138.40
10	106.06	105.56	100.08	107.61	121.14	128.04	139.22	147.85	150.67	169.36
11	127.47	130.70	121.42	132.54	143.70	150.72	162.31	177.44	171.60	199.67
12	152.57	159.66	147.89	157.53	164.62	174.43	184.46	204.16	192.72	218.87
13	177.78	188.62	171.54	183.40	183.32	200.87	209.17	222.53	215.05	240.09
14	204.86	209.33	187.69	196.88	204.72	220.81	230.69	244.29	243.25	255.35
15	226.33	228.55	209.43	213.83	220.93	240.13	245.29	255.98	266.46	262.62
16	239.45	245.41	239.08	235.62	237.40	257.42	252.08	261.03	283.11	267.82
17	249.41	250.43	260.94	248.50	247.36	272.08	260.02	265.96	294.26	274.91
18	263.37	260.55	274.74	251.74	254.63	274.61	275.47	270.87	306.51	276.78
19	276.70	263.11	288.56	251.13	272.29	267.02	291.54	277.90	319.81	287.03
20	292.18	274.78	299.66	260.63	289.07	272.99	309.76	293.11	323.91	296.40
21	308.56	281.80	307.32	271.96	303.96	289.73	324.55	309.39	330.37	309.72
22	325.84	290.49	305.09	287.62	312.13	306.35	331.11	323.13	338.94	326.68
23	331.17	305.94	309.00	299.09	318.55	323.05	334.82	331.59	341.19	343.48
24	335.35	321.69	310.75	308.30	323.39	336.12	342.61	346.05	347.03	361.81
25	344.96	339.61	314.10	320.77	328.80	339.24	351.67	365.69	358.94	381.36
26	356.31	358.62	324.31	335.88	335.33	342.68	362.39	384.48	370.67	402.17
27	366.20	378.95	337.00	353.31	345.47	353.67	375.41	402.17	386.10	422.09
28	381.49	391.92	350.22	374.27	356.34	367.51	386.21	419.53	396.59	432.84
29	389.07	399.85	367.15	395.07	364.20	397.31	398.11	435.27	411.41	441.17
30	395.22	411.94	383.37	414.29	372.38	428.09	419.16	442.63	430.94	451.24
31	410.98	421.78	400.29	427.59	391.77	434.67	420.58	443.50	442.80	459.78
32	422.41	424.75	421.35	432.96	395.34	424.95	409.98	454.48	446.06	457.88
33	407.49	432.14	432.50	435.97	387.32	414.48	407.76	464.47	452.90	455.72
34	398.48	443.00	433.93	446.41	385.06	405.20	411.80	457.56	454.16	467.23
35	398.98	431.17	436.74	463.30	387.82	401.41	418.20	451.01	462.12	475.50
36	401.71	418.36	439.20	461.43	395.58	405.40	424.99	457.25	471.80	473.96
37	412.01	414.81	442.56	459.20	409.34	421.18	444.94	467.03	494.00	478.88
38	425.36	420.67	448.79	461.04	431.46	441.06	469.83	477.12	511.96	487.34
39	443.98	434.28	466.76	468.89	462.27	451.95	485.83	491.03	512.60	494.99
40	468.31	457.04	480.12	478.31	489.65	464.09	491.41	511.66	523.20	506.62
41	488.43	480.24	486.49	489.09	499.35	475.74	497.30	532.96	552.17	523.33
42	499.59	501.29	508.05	507.74	510.69	494.76	509.22	555.29	568.83	548.97
43	509.09	523.15	522.83	532.90	517.98	512.67	522.24	571.63	579.00	571.17
44	520.17	543.88	536.20	562.16	532.95	540.32	543.80	583.72	595.49	603.69
45	537.37	557.02	558.86	585.43	543.80	567.98	569.90	600.88	621.71	628.53
46	559.27	572.05	583.83	605.76	569.29	598.01	600.02	618.00	648.65	658.43
47	579.13	586.65	608.58	621.90	592.10	622.31	626.47	638.42	679.72	683.86
48	605.99	605.61	629.67	644.15	621.22	649.85	653.09	664.63	708.80	697.49
49	630.03	627.71	655.10	662.83	642.14	670.42	675.88	685.24	737.75	710.55
50	648.26	649.60	685.10	683.84	667.96	691.77	697.07	708.96	761.26	731.54
51	667.90	669.19	716.69	693.94	694.21	709.45	717.07	732.46	788.93	752.89

52	680.10	689.06	745.91	716.48	711.65	730.96	737.92	754.50	820.29	770.52
53	695.55	706.27	773.60	738.45	727.78	735.33	753.63	780.72	849.16	796.45
54	711.27	727.12	804.48	758.10	748.16	739.88	762.29	812.40	874.13	825.18
55	729.46	748.44	836.56	788.01	755.06	749.19	768.28	825.24	899.54	850.24
56	736.31	764.05	859.51	820.12	754.73	769.68	781.41	831.77	914.42	871.00
57	742.55	770.03	883.99	842.84	762.16	798.21	798.07	838.21	939.92	898.22
58	753.47	771.39	894.69	872.26	763.36	805.85	822.22	840.45	963.86	922.24
59	767.61	780.75	913.12	902.50	779.79	829.74	839.71	839.60	986.66	931.68
60	790.11	785.68	930.32	918.26	784.53	851.89	858.73	844.23	1014.62	939.39
61	801.16	782.67	948.56	929.84	786.37	877.83	871.42	848.87	1046.47	955.57
62	822.73	785.01	972.66	931.57	793.74	909.74	880.20	854.58	1080.66	987.92
63	832.79	789.25	988.24	948.04	788.05	929.81	885.21	853.68	1099.25	1021.05
64	840.11	796.26	1004.73	972.04	800.36	952.67	890.84	854.27	1103.32	1050.24
65	857.45	805.14	1025.30	995.74	810.17	985.34	920.37	858.52	1106.91	1046.41
66	902.67	808.49	1047.95	1027.73	839.08	1015.79	925.18	847.98	1123.72	1032.63
67	941.33	826.91	1102.91	1034.09	819.75	953.23	894.15	836.07	1101.20	1008.42
68	918.74	806.21	1142.43	1035.93	799.12	893.33	861.18	814.76	1074.57	964.95
69	887.95	793.32	1159.62	1017.16	780.67	826.30	835.51	793.95	1047.19	930.60
70	871.04	780.30	1159.45	988.05	765.57	765.32	784.34	763.76	971.99	893.33
71	841.16	764.04	1128.50	976.35	732.99	714.67	724.49	726.29	897.21	856.58
72	811.09	735.46	1045.05	942.86	698.01	683.81	686.54	695.71	829.25	824.02
73	786.73	712.04	953.34	915.66	672.83	649.81	671.03	662.35	771.97	777.79
74	757.46	691.67	870.37	879.82	626.50	625.22	678.68	596.25	742.86	705.59
75	741.96	659.96	806.62	813.60	577.73	609.22	689.75	512.48	698.50	648.53
76	717.34	600.29	772.48	741.72	505.54	599.73	665.92	451.40	650.87	609.10
77	666.75	526.83	717.99	684.12	450.67	575.05	651.51	400.57	593.06	551.57
78	587.33	465.46	662.44	631.01	406.39	519.24	599.04	344.46	494.80	479.69
79	539.25	407.68	586.31	570.96	355.90	456.66	505.65	292.30	395.95	400.84
80	473.65	348.50	509.73	491.78	307.26	404.18	415.26	243.78	296.74	289.15
81	400.86	293.61	408.05	391.01	259.67	347.75	321.40	176.40	204.81	197.33
82	323.68	232.96	292.84	278.80	194.16	249.15	215.28	109.01	112.88	105.51
83	244.61	159.45	186.33	177.05	118.71	136.92	109.16	49.19	44.83	38.66
84	147.50	89.68	80.03	75.79	66.74	51.47	47.41	31.40	26.55	25.58
85	70.27	47.62	38.12	37.62	35.94	32.84	26.55	13.62	15.71	12.50
86	44.81	22.85	25.42	21.43	5.72	14.21	5.88	3.61	4.91	4.31
87	19.39	7.27	12.72	5.49	3.40	3.42	3.16	1.76	1.99	1.74
88	5.33	4.35	4.33	2.87	1.56	1.29	1.20	0.57	0.50	0.49
89	2.67	1.50	1.67	1.05	0.54	0.31	0.21	0.17	0.17	0.16
90	0.00	0.00	0.00	0.00	0.00	0.00	0.00	0.00	0.00	0.00
91	0.00	0.00	0.00	0.00	0.00	0.00	0.00	0.00	0.00	0.00
92	0.00	0.00	0.00	0.00	0.00	0.00	0.00	0.00	0.00	0.00
93	0.00	0.00	0.00	0.00	0.00	0.00	0.00	0.00	0.00	0.00
94	0.00	0.00	0.00	0.00	0.00	0.00	0.00	0.00	0.00	0.00
95	0.00	0.00	0.00	0.00	0.00	0.00	0.00	0.00	0.00	0.00
96	0.00	0.00	0.00	0.00	0.00	0.00	0.00	0.00	0.00	0.00
97	0.00	0.00	0.00	0.00	0.00	0.00	0.00	0.00	0.00	0.00
98	0.00	0.00	0.00	0.00	0.00	0.00	0.00	0.00	0.00	0.00
99	0.00	0.00	0.00	0.00	0.00	0.00	0.00	0.00	0.00	0.00
100	0.00	0.00	0.00	0.00	0.00	0.00	0.00	0.00	0.00	0.00
101	0.00	0.00	0.00	0.00	0.00	0.00	0.00	0.00	0.00	0.00
102	0.00	0.00	0.00	0.00	0.00	0.00	0.00	0.00	0.00	0.00
103	0.00	0.00	0.00	0.00	0.00	0.00	0.00	0.00	0.00	0.00
104	0.00	0.00	0.00	0.00	0.00	0.00	0.00	0.00	0.00	0.00
105	0.00	0.00	0.00	0.00	0.00	0.00	0.00	0.00	0.00	0.00
106	0.00	0.00	0.00	0.00	0.00	0.00	0.00	0.00	0.00	0.00
107	0.00	0.00	0.00	0.00	0.00	0.00	0.00	0.00	0.00	0.00
108	0.00	0.00	0.00	0.00	0.00	0.00	0.00	0.00	0.00	0.00
109	0.00	0.00	0.00	0.00	0.00	0.00	0.00	0.00	0.00	0.00
110	0.00	0.00	0.00	0.00	0.00	0.00	0.00	0.00	0.00	0.00
111	0.00	0.00	0.00	0.00	0.00	0.00	0.00	0.00	0.00	0.00



172	0.00	0.00	0.00	0.00	0.00	0.00	0.00	0.00	0.00	0.00
173	0.00	0.00	0.00	0.00	0.00	0.00	0.00	0.00	0.00	0.00
174	0.00	0.00	0.00	0.00	0.00	0.00	0.00	0.00	0.00	0.00
175	0.00	0.00	0.00	0.00	0.00	0.00	0.00	0.00	0.00	0.00
176	0.00	0.00	0.00	0.00	0.00	0.00	0.00	0.00	0.00	0.00
177	0.00	0.00	0.00	0.00	0.00	0.00	0.00	0.00	0.00	0.00
178	0.00	0.00	0.00	0.00	0.00	0.00	0.00	0.00	0.00	0.00
179	0.00	0.00	0.00	0.00	0.00	0.00	0.00	0.00	0.00	0.00
180	0.00	0.00	0.00	0.00	0.00	0.00	0.00	0.00	0.00	0.00

Vert. Angles	Horizontal Angles				
	300	315	330	345	360
0	49.77	49.77	49.77	49.77	49.77
1	54.55	54.29	54.20	54.20	55.13
2	60.80	59.78	60.05	60.04	62.16
3	67.48	65.26	65.90	65.92	68.88
4	73.63	70.31	72.39	73.07	75.80
5	78.68	77.91	79.48	78.79	80.27
6	84.94	86.62	88.20	85.61	84.86
7	97.37	98.67	98.07	94.62	91.10
8	114.42	117.11	112.96	108.74	104.03
9	143.73	137.84	135.79	129.40	128.86
10	166.91	159.79	156.40	153.07	158.55
11	190.02	186.53	181.65	175.67	188.24
12	215.51	209.39	207.53	200.52	216.98
13	232.50	228.38	223.51	228.76	237.22
14	247.97	245.33	241.65	246.45	253.26
15	253.01	263.18	256.54	259.80	266.44
16	267.59	278.40	269.10	267.80	281.45
17	283.07	290.15	279.71	276.83	287.05
18	288.75	296.05	298.48	279.43	284.63
19	302.88	299.95	311.84	290.25	286.86
20	313.15	306.57	315.56	300.13	297.08
21	321.40	318.92	322.86	308.29	316.50
22	331.35	332.40	330.61	320.19	335.30
23	342.27	340.27	333.92	333.37	350.49
24	357.05	347.34	344.39	346.41	367.34
25	368.64	350.60	352.42	359.74	383.74
26	371.77	355.39	360.69	375.93	394.71
27	376.39	365.98	367.28	394.58	402.23
28	381.15	382.04	379.46	412.75	413.12
29	385.04	406.82	390.67	424.10	423.41
30	392.53	431.76	411.54	430.12	432.11
31	412.39	431.15	408.10	430.97	439.51
32	406.53	435.04	407.85	439.00	445.07
33	400.41	429.17	410.17	431.28	446.57
34	399.03	420.61	410.46	419.62	449.58
35	401.67	414.83	411.70	416.03	450.87
36	408.46	417.39	419.63	422.84	464.98
37	427.41	434.75	432.16	436.41	487.02
38	446.80	460.54	453.62	459.06	495.81
39	472.93	478.41	478.36	479.00	494.17
40	496.00	486.60	489.06	498.09	500.67
41	506.18	507.47	502.32	517.10	518.91
42	523.10	517.74	514.40	540.57	543.61
43	536.51	544.27	528.80	557.91	560.18
44	551.19	563.78	554.14	575.90	578.10
45	578.97	590.22	576.43	589.86	600.91
46	599.44	617.17	604.84	607.93	622.28



47	629.90	636.01	626.96	628.78	646.63
48	649.80	662.17	650.10	650.34	678.03
49	671.52	677.25	672.25	672.99	713.53
50	696.16	694.53	690.15	692.32	740.32
51	717.90	706.61	704.86	713.85	767.02
52	734.51	731.70	723.18	734.55	798.15
53	744.67	732.21	743.07	751.84	823.13
54	753.84	743.68	747.37	772.37	852.41
55	755.73	759.16	761.05	787.84	878.53
56	771.10	773.89	771.43	787.94	896.16
57	776.15	795.47	788.39	793.29	910.86
58	783.79	809.52	809.42	799.17	929.68
59	791.31	826.34	816.48	799.96	949.10
60	790.56	863.55	829.41	807.79	976.05
61	801.84	880.41	844.50	821.31	1009.14
62	810.02	920.19	851.67	832.68	1046.26
63	809.60	929.74	863.09	838.58	1070.13
64	824.76	961.36	888.02	838.67	1085.93
65	821.93	1029.72	957.02	847.09	1104.32
66	809.32	970.95	959.36	842.12	1130.73
67	791.51	900.35	909.57	818.72	1121.64
68	759.16	841.69	873.68	805.75	1095.20
69	738.12	777.99	840.54	794.78	1073.48
70	704.24	738.06	802.30	766.77	1031.67
71	664.16	728.16	775.26	736.97	974.73
72	634.75	732.85	767.94	714.33	911.78
73	598.08	712.17	758.60	686.33	847.86
74	556.37	675.05	739.36	642.13	802.08
75	471.51	631.16	690.63	563.05	746.10
76	413.60	578.79	618.18	488.39	678.60
77	366.76	516.02	565.51	425.00	611.81
78	318.23	459.84	487.67	364.72	532.53
79	282.37	391.97	400.46	314.03	445.58
80	237.04	333.97	326.64	264.87	349.90
81	166.53	249.40	245.02	199.87	257.50
82	96.22	158.55	157.30	127.73	147.74
83	52.80	68.12	71.17	62.73	66.51
84	29.28	34.47	45.47	40.55	44.06
85	6.12	20.15	19.77	18.36	21.95
86	3.17	6.21	5.28	5.33	8.28
87	1.46	4.38	3.08	2.73	4.82
88	0.50	0.77	0.74	0.90	2.23
89	0.16	0.17	0.21	0.30	0.58
90	0.00	0.00	0.00	0.00	0.00
91	0.00	0.00	0.00	0.00	0.00
92	0.00	0.00	0.00	0.00	0.00
93	0.00	0.00	0.00	0.00	0.00
94	0.00	0.00	0.00	0.00	0.00
95	0.00	0.00	0.00	0.00	0.00
96	0.00	0.00	0.00	0.00	0.00
97	0.00	0.00	0.00	0.00	0.00
98	0.00	0.00	0.00	0.00	0.00
99	0.00	0.00	0.00	0.00	0.00
100	0.00	0.00	0.00	0.00	0.00
101	0.00	0.00	0.00	0.00	0.00
102	0.00	0.00	0.00	0.00	0.00
103	0.00	0.00	0.00	0.00	0.00
104	0.00	0.00	0.00	0.00	0.00
105	0.00	0.00	0.00	0.00	0.00
106	0.00	0.00	0.00	0.00	0.00



107	0.00	0.00	0.00	0.00	0.00
108	0.00	0.00	0.00	0.00	0.00
109	0.00	0.00	0.00	0.00	0.00
110	0.00	0.00	0.00	0.00	0.00
111	0.00	0.00	0.00	0.00	0.00
112	0.00	0.00	0.00	0.00	0.00
113	0.00	0.00	0.00	0.00	0.00
114	0.00	0.00	0.00	0.00	0.00
115	0.00	0.00	0.00	0.00	0.00
116	0.00	0.00	0.00	0.00	0.00
117	0.00	0.00	0.00	0.00	0.00
118	0.00	0.00	0.00	0.00	0.00
119	0.00	0.00	0.00	0.00	0.00
120	0.00	0.00	0.00	0.00	0.00
121	0.00	0.00	0.00	0.00	0.00
122	0.00	0.00	0.00	0.00	0.00
123	0.00	0.00	0.00	0.00	0.00
124	0.00	0.00	0.00	0.00	0.00
125	0.00	0.00	0.00	0.00	0.00
126	0.00	0.00	0.00	0.00	0.00
127	0.00	0.00	0.00	0.00	0.00
128	0.00	0.00	0.00	0.00	0.00
129	0.00	0.00	0.00	0.00	0.00
130	0.00	0.00	0.00	0.00	0.00
131	0.00	0.00	0.00	0.00	0.00
132	0.00	0.00	0.00	0.00	0.00
133	0.00	0.00	0.00	0.00	0.00
134	0.00	0.00	0.00	0.00	0.00
135	0.00	0.00	0.00	0.00	0.00
136	0.00	0.00	0.00	0.00	0.00
137	0.00	0.00	0.00	0.00	0.00
138	0.00	0.00	0.00	0.00	0.00
139	0.00	0.00	0.00	0.00	0.00
140	0.00	0.00	0.00	0.00	0.00
141	0.00	0.00	0.00	0.00	0.00
142	0.00	0.00	0.00	0.00	0.00
143	0.00	0.00	0.00	0.00	0.00
144	0.00	0.00	0.00	0.00	0.00
145	0.00	0.00	0.00	0.00	0.00
146	0.00	0.00	0.00	0.00	0.00
147	0.00	0.00	0.00	0.00	0.00
148	0.00	0.00	0.00	0.00	0.00
149	0.00	0.00	0.00	0.00	0.00
150	0.00	0.00	0.00	0.00	0.00
151	0.00	0.00	0.00	0.00	0.00
152	0.00	0.00	0.00	0.00	0.00
153	0.00	0.00	0.00	0.00	0.00
154	0.00	0.00	0.00	0.00	0.00
155	0.00	0.00	0.00	0.00	0.00
156	0.00	0.00	0.00	0.00	0.00
157	0.00	0.00	0.00	0.00	0.00
158	0.00	0.00	0.00	0.00	0.00
159	0.00	0.00	0.00	0.00	0.00
160	0.00	0.00	0.00	0.00	0.00
161	0.00	0.00	0.00	0.00	0.00
162	0.00	0.00	0.00	0.00	0.00
163	0.00	0.00	0.00	0.00	0.00
164	0.00	0.00	0.00	0.00	0.00
165	0.00	0.00	0.00	0.00	0.00
166	0.00	0.00	0.00	0.00	0.00



167	0.00	0.00	0.00	0.00	0.00
168	0.00	0.00	0.00	0.00	0.00
169	0.00	0.00	0.00	0.00	0.00
170	0.00	0.00	0.00	0.00	0.00
171	0.00	0.00	0.00	0.00	0.00
172	0.00	0.00	0.00	0.00	0.00
173	0.00	0.00	0.00	0.00	0.00
174	0.00	0.00	0.00	0.00	0.00
175	0.00	0.00	0.00	0.00	0.00
176	0.00	0.00	0.00	0.00	0.00
177	0.00	0.00	0.00	0.00	0.00
178	0.00	0.00	0.00	0.00	0.00
179	0.00	0.00	0.00	0.00	0.00
180	0.00	0.00	0.00	0.00	0.00

## 4.0 LM-79 Measurement and Test Results

### 4.3 THD and PF Test

Model No.	ALED5T26Y/D10	Sample ID.	A1
Temperature (°C)	25.3	Humidity (%RH)	56.0

#### Test Method

The samples were tested according to the ANSI C82.77:2002.

The total harmonic distortion shall be measured to the 40th order.

The ambient temperature condition was maintained at 25° C ± 1° C. The sample measurements were made using a digital power meter and power supply. The sample was operated at rated voltage and was stabilized before measurement. The total harmonic distortion were calculated.

#### Test Results

Voltage (Vac)	Frequency (Hz)	Current (A)	Power (W)	Power Factor	THD
120.01	60	0.220	26.3	0.996	5.67%
277.01	60	0.098	26.3	0.964	6.72%

## 5.0 Equipment Information

Test Equipment			
Equipment ID	Equipment Name	Last Calibration Date	Calibration Due Date
DLF107	Integrating Sphere System	2020/12/26	2021/12/25
DLF108	Auxiliary Lamp	2020/12/26	2021/12/25
DLF122	Measurement Standard Lamp Standard Lamp Type: 220 V, 0.4720 A, Tungsten, Omni-derectional	2020/12/26	2021/12/25
DLF116	AC Power Source	2020/12/26	2021/12/25
DLF113	Power Meter	2020/12/26	2021/12/25
DLF112	Temperature Recorder	2020/12/26	2021/12/25
DLF114	Temperature & Humidity Datalogger	2020/12/26	2021/12/25
DLF101	Goniophotometer	2020/12/26	2021/12/25
DLF125	Standard Lamp Standard Lamp Type: 76.58 V, 6.7875 A, Tungsten, Omni-derectional	2020/12/26	2021/12/25
DLF104	AC Power Source	2020/12/26	2021/12/25
DLF507	DC Power Source	2020/12/26	2021/12/25
DLF102	Power Meter	2020/12/26	2021/12/25
DLF111	Temperature & Humidity Datalogger	2020/12/26	2021/12/25
DLF119	Power Meter	2020/12/26	2021/12/25
DLF031	Temperature data logger	2020/12/26	2021/12/25
DLF022	Digital power meter	2020/12/26	2021/12/25
DLF003	Temperature & Humidity Datalogger	2020/12/26	2021/12/25

\*\*\*\*\* End of Test Report\*\*\*\*\*