

Photometric Test Report

Relevant Standards

- IES LM-79-2008
- ANSI C82.77:2017

Prepared For RAB Lighting Inc.

Room 6A33, No.1388, Wuzhong road, Shanghai, China

Xiao Xiang, 15921313292, Gary.Xiao@rabweb.com

Prepared By

Deliver Co., Ltd.

Block 11, 78 Keling Road, SSTP, Suzhou, China

0512-66801950, kevin.jia@szdeliver.com

Project Number

DLF2102103

Report Number

DLF2102103-2a

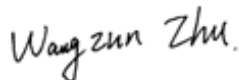
Test Date

2021/2/6

Issue Date

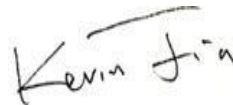
2021/3/16

Prepared By



Wangzun Zhu

Approved By



Kevin Jia

The results contained in this report pertain only to the tested sample.

This report shall not be reproduced, except in full, without written approval of Deliver Co., Ltd.

This report must not be used by the client to claim product certification, approval, or endorsement by NVLAP.

1.0 Test Summary

DLC Technical Requirements v5.1

Outdoor - Pole/Arm-Mounted Decorative Luminaires				
Requirement Category	Test Method	Requirements		Test value
Luminaire Output (lm) (Goniophotometer - Section 4.2)	IES LM-79-2008	1000		6498
Minimum Luminaire Efficacy (lm/W) (Goniophotometer - Section 4.2)	IES LM-79-2008	Standard 105	Premium 120	121.6
Power (Input Wattage) (W) (Goniophotometer - Section 4.2)	IES LM-79-2008	Wrost Case		53.5
Total Harmonic Distortion (A%) (THD & PF - section 4.3)	ANSI C82.77:2014	20.00%	120V	3.27%
		20.00%	277V	6.42%
Power Factor (THD & PF - section 4.3)	ANSI C82.77:2014	0.9	120V	0.999
		0.9	277V	0.964
Allowable CCTs* (K) (Integrating Sphere - Section 4.1)	IES LM-79-2008	7 step	3045±175	2974
		4 step	3045±100	
Minimum CRI (Integrating Sphere - Section 4.1)	IES LM-79-2008 CIE 13.3-1995	≥70		70
Minimum R9 (Integrating Sphere - Section 4.1)	IES LM-79-2008 CIE 13.3-1995	≥-40		-32
Minimum Rf (Integrating Sphere - Section 4.1)	ANSI/IES TM-30-18	≥70		73
Minimum Rg (Integrating Sphere - Section 4.1)	ANSI/IES TM-30-18	≥89		95
Minimum IES Rcs,h1 (Integrating Sphere - Section 4.1)	ANSI/IES TM-30-18	-18% ≤ IES Rcs,h1 ≤ +23%		-16%
Zonal Lumen Requirement (0°-90°) (Goniophotometer - Section 4.2)	IES LM-79-2008	≥65%		100.00%
Input Voltage (V)				
(Goniophotometer - Section 4.2)	IES LM-79-2008	Wrost Case		120
(Goniophotometer - Section 4.2)		Non-Wrost Case		277
Input Current (A)				
(Goniophotometer - Section 4.2)	IES LM-79-2008	Wrost Case		0.446
(Goniophotometer - Section 4.2)		Non-Wrost Case		0.194
Power (Input Wattage - W)				
(Goniophotometer - Section 4.2)	IES LM-79-2008	Wrost Case		53.5
(Goniophotometer - Section 4.2)		Non-Wrost Case		51.9

2.0 Test List

Test Item	Test	Test Date	Model Number	Sample No.
1	Integrating Sphere Test	2021/2/6	ALED5T52Y/D10	B1
2	Goniophotometer Test	2021/2/6	ALED5T52Y/D10	B1
3	THD and PF Test	2021/2/6	ALED5T52Y/D10	B1

Remark(If any)

1、 This report shall not be used by the client to claim product endorsement by NVLAP, NIST or any agency of the US government.

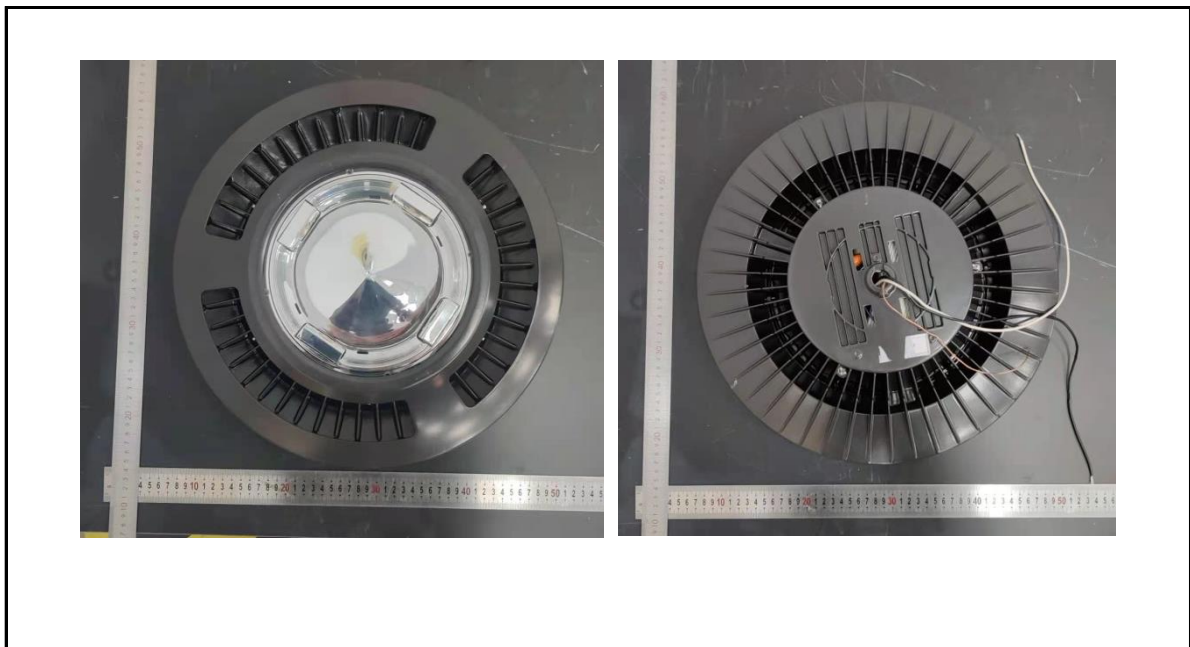
2、 The results reported herein have been performed in accordance with the laboratory's terms of accreditation. This report shall not be reproduced except in full without the written approval of the Laboratory. The results in this report apply to the test sample(s) mentioned above at the time of the testing period only and are not to be used to indicate applicability to other similar products. This report does not imply that the product(s) has met the criteria for certification.

3.0 Production Description

Luminaire Description: ALED5T52Y/D10

Electrical Specification: 120V-277V,50/60HZ

Photos of Luminaire Characteristics



4.0 LM-79 Measurement and Test Results

4.1 Integrating Sphere Test

Model No.	ALED5T52Y/D10	Sample ID.	B1
Operate time (Min.)	90	Stabilization time (Min.)	45
Temperature (°C)	25.3	Humidity (%RH)	56.0

Test Method

The samples were tested according to the IES LM-79-2008.

Photometric parameters were measured using an integrating sphere, a spectroradiometer and software. The ambient temperature condition inside the sphere was maintained at 25° C ± 1° C.

The sample measurements were made using a spectroradiometer connected by a fiber optic cable and detector through the detector port of the integrating sphere.

The voltage of an AC power supply (RMS voltage) or DC power supply (instantaneous voltage) applied to the device under test shall be regulated to within ±0.2 percent under load.

The sample was measured using 4π geometry and operated at rated voltage and was stabilized before measurement. Chromaticity coordinates, correlated color temperature and color rendering index were calculated from the spectral radiant flux measurements taken at 1 nm intervals over the range of 380 to 780 nm.

Test Result

Voltage (Vac)	Frequency (Hz)	Current (A)	Power (W)	Power Factor
119.94	60	0.447	53.6	0.999
277.01	60	0.195	52.0	0.964

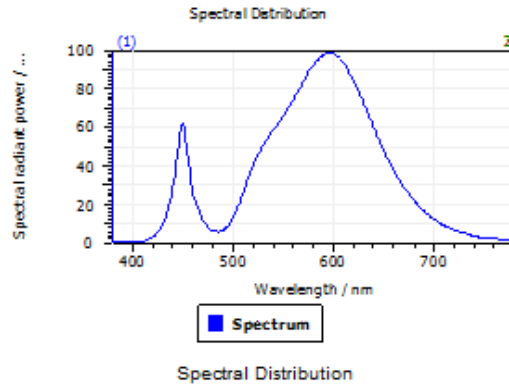
Test Result

CCT (K)	CRI	R9	Duv
2974	70	-32	0.0016

Rf	Rg	IES Rcs,h1
73	95	-16%

4.1 Integrating Sphere Test

Results



Spectral values

DominantWavelength 582.39 nm
Purity 0.554
PeakWavelength 595.75 nm
Radiant Power 13.71 W
Width50%:

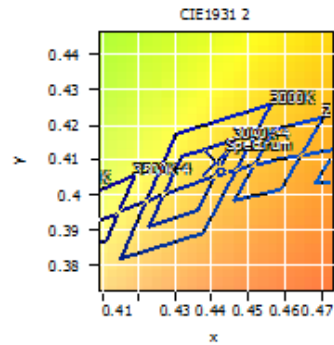
Date: 2021/3/11 9:38:21

Color Coordinates

Correlated Color Temperatu 2974 K
x: 0.4412 u: 0.2509 u': 0.2509
y: 0.4098 v: 0.3494 v': 0.5242

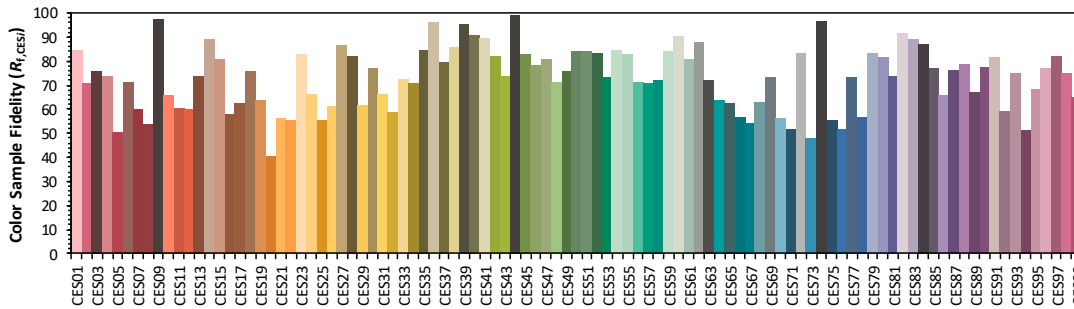
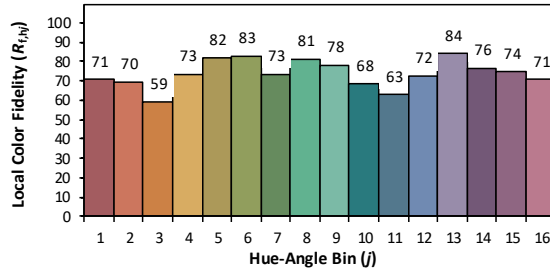
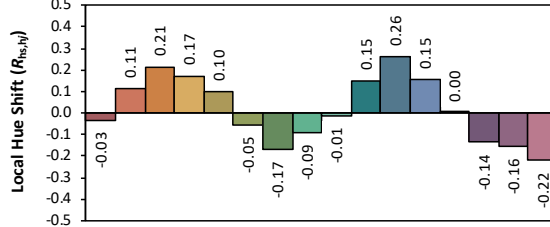
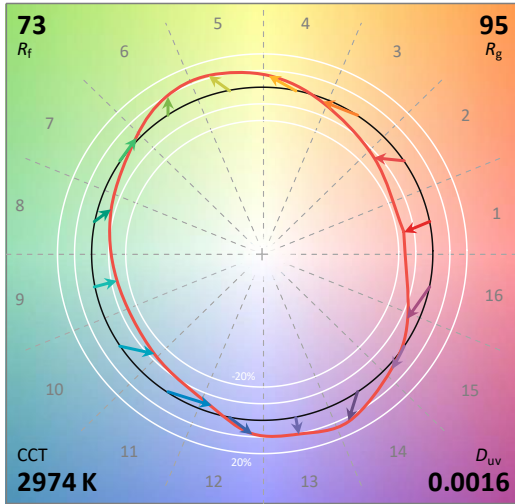
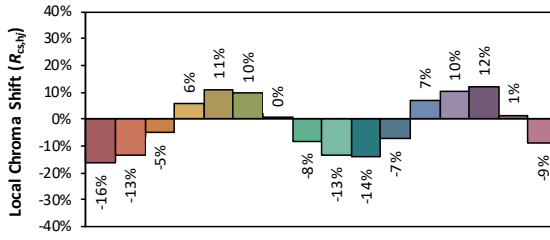
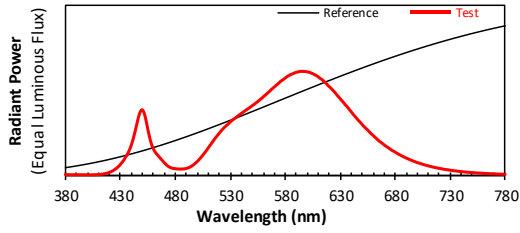
CRI01	67.0	CRI09	-31.8
CRI02	79.7	CRI10	52.3
CRI03	90.5	CRI11	60.2
CRI04	66.8	CRI12	39.8
CRI05	64.9	CRI13	69.1
CRI06	70.8	CRI14	94.3
CRI07	78.4	CRI15	59.5
CRI08	44.5	CRI16	59.4

ResultsCRI 70.3



PlanckDistance 1.6E-003

4.1 Integrating Sphere Test



Notes: This is a recommended method for displaying ANSI/IES TM-30-18 information.

x 0.4412
 y 0.4096
 u' 0.2509
 v' 0.5242

CIE 13.3-1995 (CRI)	
R_a	71
R_g	-30

4.0 LM-79 Measurement and Test Results

4.2 Goniophotometer Test

Model No.	ALED5T52Y/D10	Sample ID.	B1
Operate time (Min.)	90	Stabilization time (Min.)	45
Temperature (°C)	25.3	Humidity (%RH)	54.0

Test Method

The samples were tested according to the IES LM-79-2008.

Photometric parameters were measured using a type C goniophotometer and software.

The ambient temperature shall be maintained at 25° C ± 1° C, measured at a point not more than 1 m from the sample and at the same height as the sample.

The voltage of an AC power supply (RMS voltage) or DC power supply (instantaneous voltage) applied to the device under test shall be regulated to within ±0.2 percent under load.

The samples were operated at rated voltage and was stabilized before measurement. Luminous flux, luminaire efficacy, zonal lumen were calculated from the software taken at 0.5° vertical intervals and 10° horizontal intervals.

Test Conditions

Condition	Voltage (Vac)	Frequency (Hz)	Current (A)	Power (W)	Power Factor
WROST CASE	120.03	60	0.446	53.5	0.999
NON-WROST CASE	277.01	60	0.194	51.9	0.964

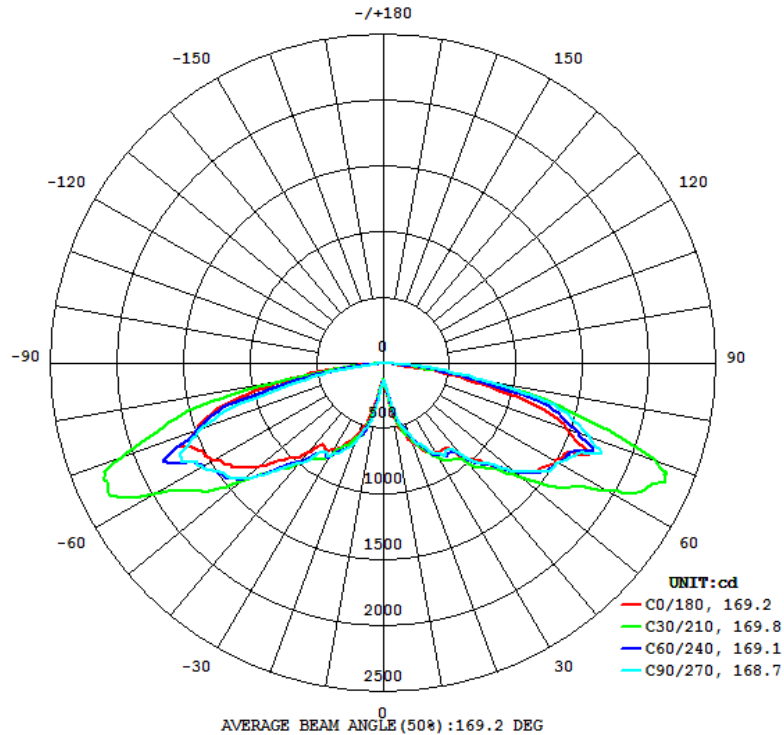
Test Result

Flux (lm)	Field Angle(10%)		Beam Angle(50%)		Luminous Efficacy (lm/W)
	C0-180	C90-270	C0-180	C90-270	
6498	174.0	173.5	169.2	168.7	121.6

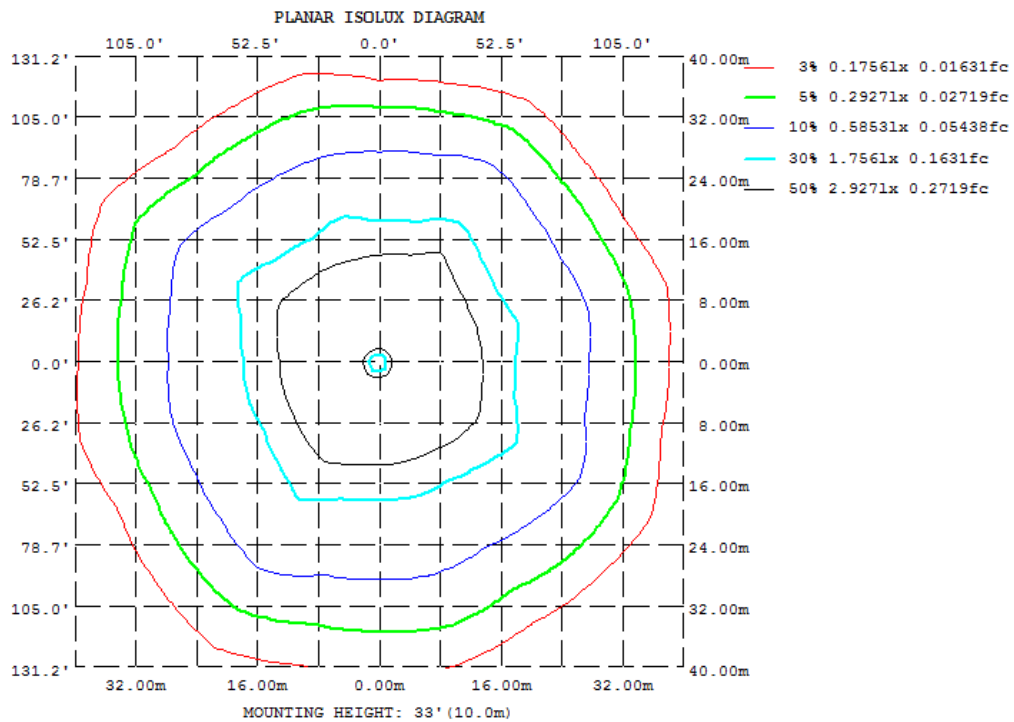
Zonal Lumen Requirement (0°-90°)	BUG rating
100.00%	B3-U0-G2

4.2 Goniophotometer Test

Light Distribution Curve



Isolux Plot



4.2 Goniophotometer Test

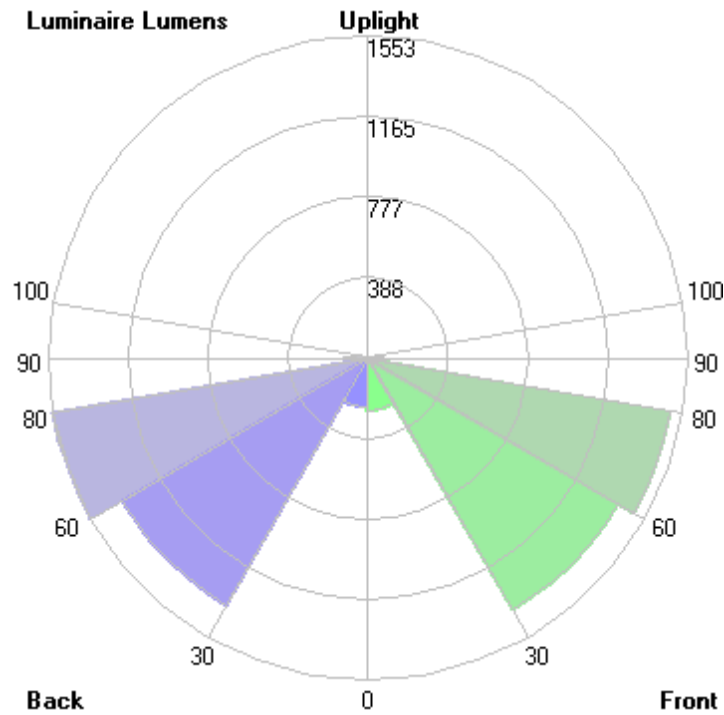
Zonal Lumen Summary

γ	C0	C45	C90	C135	C180	C225	C270	C315
10	337.7	266.0	228.0	191.6	225.0	301.9	339.9	359.3
20	642.6	581.7	581.3	560.3	582.8	585.9	651.0	624.5
30	782.6	884.8	799.8	821.4	761.6	874.6	825.9	878.6
40	952.3	986.2	905.6	948.9	893.8	976.1	998.6	992.8
50	1284	1345	1284	1280	1231	1357	1374	1367
60	1502	1708	1520	1624	1483	1702	1578	1682
70	1465	1730	1653	1795	1501	1558	1457	1568
80	504.5	670.2	761.1	829.1	714.5	583.7	415.3	378.8
90	0	0	0	0	0	0	0	0
100	0	0	0	0	0	0	0	0
110	0	0	0	0	0	0	0	0
120	0	0	0	0	0	0	0	0
130	0	0	0	0	0	0	0	0
140	0	0	0	0	0	0	0	0
150	0	0	0	0	0	0	0	0
160	0	0	0	0	0	0	0	0
170	0	0	0	0	0	0	0	0
180	0	0	0	0	0	0	0	0
DEG	LUMINOUS INTENSITY:cd							

	Zonal (lm)	Total (lm)	Percent
0-10	18.62	0 - 10	18.62 0.29%
10-20	138.92	0 - 20	157.54 2.42%
20-30	333.77	0 - 30	491.31 7.56%
30-40	550.14	0 - 40	1041.45 16.03%
40-50	880.21	0 - 50	1921.66 29.58%
50-60	1345.81	0 - 60	3267.47 50.29%
60-70	1740.72	0 - 70	5008.19 77.08%
70-80	1302.39	0 - 80	6310.58 97.12%
80-90	186.94	0 - 90	6497.52 100.00%
90-100	0.00	0 - 100	6497.52 100.00%
100-110	0.00	0 - 110	6497.52 100.00%
110-120	0.00	0 - 120	6497.52 100.00%
120-130	0.00	0 - 130	6497.52 100.00%
130-140	0.00	0 - 140	6497.52 100.00%
140-150	0.00	0 - 150	6497.52 100.00%
150-160	0.00	0 - 160	6497.52 100.00%
160-170	0.00	0 - 170	6497.52 100.00%
170-180	0.00	0 - 180	6497.52 100.00%

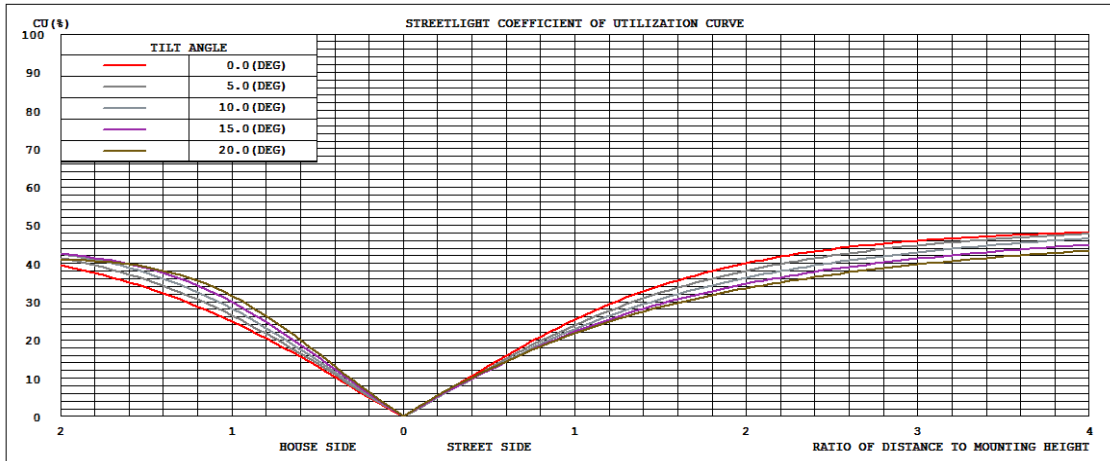
4.2 Goniophotometer Test

LCS/BUG

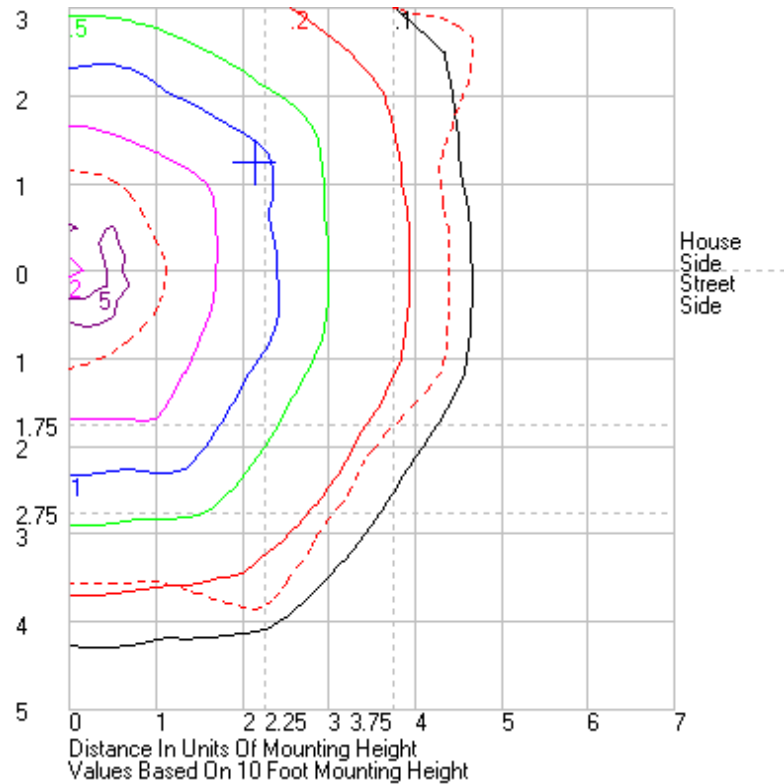


	Lumens	% Lamp	% Luminaire
FL - Front-Low (0-30)	252.6	N.A.	3.9
FM - Front-Medium (30-60)	1401.2	N.A.	21.6
FH - Front-High (60-80)	1489.7	N.A.	22.9
FVH - Front-Very High (80-90)	72.8	N.A.	1.1
BL - Back-Low (0-30)	238.7	N.A.	3.7
BM - Back-Medium (30-60)	1375.0	N.A.	21.2
BH - Back-High (60-80)	1553.4	N.A.	23.9
BVH - Back-Very High (80-90)	114.2	N.A.	1.8
UL - Uplight-Low (90-100)	0.0	N.A.	0.0
UH - Uplight-High (100-180)	0.0	N.A.	0.0
Total	6497.6	N.A.	100.0
BUG Rating	B3-U0-G2		

Coefficients of Utilization



Isolines



	0	15	30	45	60	75	90	105	120	135
0	129.222	129.222	129.222	129.222	129.222	129.222	129.222	129.222	129.222	129.222
1	138.940	138.900	137.970	136.130	133.990	131.870	129.760	127.630	125.630	123.250
2	146.540	147.500	145.190	139.180	133.190	130.090	126.710	124.210	123.900	125.140
3	154.000	154.010	149.570	145.010	140.070	135.640	129.330	127.790	129.530	130.870
4	165.690	163.380	155.870	153.910	149.180	141.140	135.140	135.980	134.660	136.730
5	180.460	172.690	164.570	162.890	158.770	148.200	143.900	145.560	145.460	147.040
6	196.060	184.330	173.440	169.610	165.720	158.630	156.340	152.530	156.300	157.940
7	216.430	199.400	183.870	177.940	174.560	169.590	169.030	160.460	164.230	165.080
8	244.390	226.660	204.940	194.930	187.620	189.930	185.770	172.390	173.130	170.950
9	288.770	263.070	246.510	226.680	215.890	214.510	205.520	183.230	179.230	179.000
10	337.660	307.290	299.160	265.970	264.000	251.120	227.980	204.130	190.830	191.640
11	380.630	349.870	361.770	326.640	315.330	296.640	269.460	243.240	220.520	219.410
12	433.180	387.260	409.660	386.560	364.380	331.100	312.350	295.350	262.770	268.600
13	476.370	436.440	454.250	430.680	397.730	383.550	355.360	351.410	323.100	327.510
14	505.130	481.580	479.750	462.330	434.480	433.630	408.140	395.050	362.640	390.960
15	530.020	506.670	503.620	491.180	474.090	465.960	453.770	447.400	406.650	439.550
16	539.220	523.160	537.520	526.210	494.100	501.720	482.670	498.020	453.870	483.560
17	576.420	555.030	559.940	559.470	516.130	524.850	519.030	525.070	488.690	521.340
18	608.370	579.700	578.430	570.790	524.170	549.780	546.850	541.510	533.870	537.850
19	627.960	592.200	594.730	570.650	543.640	571.250	556.260	546.920	570.000	549.230
20	642.570	606.580	612.710	581.730	576.500	583.180	581.290	548.030	602.170	560.310
21	662.510	626.410	639.090	600.130	610.030	600.460	615.820	569.970	630.800	566.530
22	672.800	650.960	660.720	618.820	638.000	615.930	651.680	595.090	654.830	579.540
23	686.590	684.280	687.840	648.800	666.440	642.520	672.760	617.690	671.100	610.650
24	712.060	712.190	706.630	689.120	683.190	678.560	679.380	640.620	684.620	642.020
25	736.220	746.090	730.650	730.980	703.800	696.220	692.360	660.340	702.460	670.590
26	756.910	771.110	746.310	764.810	725.170	706.930	718.120	694.110	708.080	692.440
27	770.170	801.660	770.600	799.650	749.940	712.690	744.570	729.080	718.830	716.800
28	783.680	829.310	793.380	835.740	781.000	728.250	770.970	758.800	741.900	757.850
29	785.120	843.130	820.790	867.750	803.550	760.110	787.030	797.150	765.510	797.670
30	782.560	853.330	841.730	884.820	810.700	787.000	799.810	827.650	786.980	821.400
31	800.210	863.720	860.830	898.140	807.420	840.270	813.210	857.120	813.830	848.110
32	818.940	851.250	880.580	906.720	823.080	909.330	827.520	884.990	840.760	885.570
33	799.820	838.880	886.290	908.880	850.120	934.460	846.590	888.380	882.930	910.970
34	795.200	856.840	896.740	909.460	858.890	911.370	845.140	881.520	911.390	916.640
35	799.000	872.680	900.460	924.530	846.620	889.010	824.020	886.120	907.340	931.010
36	801.280	870.810	906.610	948.660	844.700	857.470	818.220	902.630	901.270	948.100
37	815.660	890.820	923.450	960.910	849.080	838.850	826.080	908.940	901.060	941.780
38	844.330	918.110	933.530	957.530	854.250	832.520	835.290	909.810	910.540	929.210
39	901.280	941.930	946.160	970.950	879.670	860.570	867.110	920.590	920.830	931.340
40	952.310	964.100	983.130	986.220	916.280	909.880	905.630	936.510	932.460	948.910
41	977.180	992.000	1046.150	1000.100	966.290	959.920	956.410	957.410	973.230	966.730
42	988.750	1028.060	1071.640	1033.600	1016.750	992.680	1005.220	983.520	1037.660	994.750
43	1018.480	1075.040	1094.850	1083.160	1049.160	1018.490	1037.400	1018.540	1085.570	1043.170
44	1040.490	1122.780	1115.990	1134.520	1073.910	1048.360	1061.020	1069.440	1102.360	1094.530
45	1075.500	1152.720	1138.420	1179.750	1093.380	1072.280	1078.870	1115.050	1123.350	1143.790
46	1122.220	1176.560	1163.530	1227.170	1117.010	1115.560	1104.100	1168.300	1157.510	1179.830
47	1161.570	1199.250	1200.410	1262.850	1151.370	1170.610	1140.210	1209.400	1193.220	1206.570
48	1208.390	1216.280	1246.690	1286.820	1198.240	1208.760	1187.640	1227.700	1232.820	1226.800
49	1241.340	1253.660	1300.260	1311.650	1244.710	1262.420	1237.200	1252.990	1284.280	1255.200
50	1283.690	1280.220	1353.560	1344.860	1288.130	1297.760	1284.240	1275.360	1336.000	1280.350
51	1315.140	1327.110	1415.390	1387.140	1328.040	1323.390	1315.950	1307.060	1387.720	1312.070
52	1346.120	1374.020	1488.840	1450.700	1367.950	1349.010	1347.500	1344.080	1444.490	1356.770
53	1366.090	1420.100	1552.010	1489.010	1390.640	1374.830	1375.280	1383.860	1500.730	1402.050
54	1415.520	1463.800	1607.450	1513.940	1422.670	1413.300	1405.950	1452.430	1577.390	1462.570
55	1432.200	1486.770	1658.100	1547.440	1449.310	1439.080	1436.240	1509.840	1638.290	1494.590
56	1432.380	1498.740	1689.510	1581.190	1478.290	1450.780	1476.600	1546.150	1696.370	1517.470

57	1450.160	1510.920	1733.000	1603.020	1485.140	1463.150	1496.380	1585.360	1737.250	1550.040
58	1473.790	1535.640	1788.760	1619.820	1496.260	1478.050	1507.020	1593.590	1749.740	1563.580
59	1509.830	1559.050	1871.750	1663.910	1502.190	1514.020	1507.310	1612.590	1768.010	1583.370
60	1502.200	1588.330	1944.590	1707.840	1520.710	1551.160	1520.260	1634.270	1824.510	1623.900
61	1511.920	1592.320	2018.910	1729.070	1532.200	1582.210	1544.840	1649.930	1885.790	1665.650
62	1529.100	1609.510	2117.010	1735.940	1550.750	1631.630	1567.500	1670.470	1972.420	1700.730
63	1524.740	1602.500	2158.190	1763.260	1554.000	1696.710	1579.350	1681.930	2072.150	1712.780
64	1556.490	1605.690	2186.630	1786.260	1564.110	1755.920	1600.610	1685.400	2172.600	1727.410
65	1652.060	1613.960	2207.690	1815.800	1588.030	1836.410	1623.420	1689.690	2264.480	1735.780
66	1686.990	1627.900	2252.810	1834.030	1651.270	1923.720	1697.720	1700.470	2311.550	1761.770
67	1625.170	1608.280	2302.480	1871.340	1715.610	1974.560	1775.690	1711.250	2342.100	1811.490
68	1557.420	1578.160	2279.140	1867.510	1679.700	1891.360	1747.970	1732.520	2383.640	1831.490
69	1505.450	1559.230	2241.200	1794.080	1593.970	1815.340	1675.630	1714.450	2362.040	1819.320
70	1464.560	1528.420	2161.680	1729.870	1566.200	1715.680	1652.590	1685.030	2306.790	1794.600
71	1436.740	1473.900	2047.530	1695.210	1511.140	1643.700	1600.360	1669.560	2262.710	1749.750
72	1371.060	1412.630	1912.840	1618.010	1455.250	1581.820	1563.050	1608.860	2143.690	1670.120
73	1304.890	1359.560	1779.530	1575.400	1401.210	1575.200	1502.060	1529.570	2001.790	1600.840
74	1218.840	1290.130	1612.400	1523.820	1366.130	1549.380	1460.640	1480.510	1854.650	1534.030
75	1101.770	1134.300	1475.210	1407.580	1284.360	1437.470	1388.700	1430.360	1701.570	1479.110
76	957.720	1002.260	1367.490	1253.650	1202.090	1344.530	1320.620	1367.480	1646.230	1395.340
77	827.230	882.050	1247.530	1106.570	1057.890	1237.330	1212.620	1229.230	1530.900	1239.310
78	704.490	747.410	1091.870	970.440	903.340	1116.800	1059.040	1070.370	1406.970	1074.700
79	599.660	627.090	902.390	820.340	772.880	1034.060	906.400	946.700	1295.770	952.120
80	504.450	499.350	692.420	670.200	661.830	891.080	761.140	780.440	1087.190	829.140
81	393.370	371.580	513.650	513.850	555.660	755.430	654.720	658.680	904.800	706.780
82	231.850	229.440	325.600	357.250	449.490	617.080	536.430	526.600	689.760	568.870
83	111.210	116.950	168.290	214.680	332.970	463.160	417.770	394.050	492.620	415.050
84	57.670	49.320	101.030	105.760	203.940	309.340	284.700	263.610	296.260	259.190
85	34.080	29.820	63.330	53.980	83.270	151.080	141.770	125.640	120.840	127.090
86	10.480	11.150	42.070	32.150	39.310	63.290	58.090	50.760	64.400	48.510
87	5.380	6.470	21.230	10.320	19.700	44.570	34.950	31.430	45.540	30.730
88	2.430	3.690	6.920	5.670	7.450	26.520	12.950	12.910	26.880	12.980
89	0.760	0.900	3.820	2.750	4.300	14.170	8.240	7.970	12.680	6.860
90	0.000	0.000	0.000	0.000	0.000	0.000	0.000	0.000	0.000	0.000
91	0.000	0.000	0.000	0.000	0.000	0.000	0.000	0.000	0.000	0.000
92	0.000	0.000	0.000	0.000	0.000	0.000	0.000	0.000	0.000	0.000
93	0.000	0.000	0.000	0.000	0.000	0.000	0.000	0.000	0.000	0.000
94	0.000	0.000	0.000	0.000	0.000	0.000	0.000	0.000	0.000	0.000
95	0.000	0.000	0.000	0.000	0.000	0.000	0.000	0.000	0.000	0.000
96	0.000	0.000	0.000	0.000	0.000	0.000	0.000	0.000	0.000	0.000
97	0.000	0.000	0.000	0.000	0.000	0.000	0.000	0.000	0.000	0.000
98	0.000	0.000	0.000	0.000	0.000	0.000	0.000	0.000	0.000	0.000
99	0.000	0.000	0.000	0.000	0.000	0.000	0.000	0.000	0.000	0.000
100	0.000	0.000	0.000	0.000	0.000	0.000	0.000	0.000	0.000	0.000
101	0.000	0.000	0.000	0.000	0.000	0.000	0.000	0.000	0.000	0.000
102	0.000	0.000	0.000	0.000	0.000	0.000	0.000	0.000	0.000	0.000
103	0.000	0.000	0.000	0.000	0.000	0.000	0.000	0.000	0.000	0.000
104	0.000	0.000	0.000	0.000	0.000	0.000	0.000	0.000	0.000	0.000
105	0.000	0.000	0.000	0.000	0.000	0.000	0.000	0.000	0.000	0.000
106	0.000	0.000	0.000	0.000	0.000	0.000	0.000	0.000	0.000	0.000
107	0.000	0.000	0.000	0.000	0.000	0.000	0.000	0.000	0.000	0.000
108	0.000	0.000	0.000	0.000	0.000	0.000	0.000	0.000	0.000	0.000
109	0.000	0.000	0.000	0.000	0.000	0.000	0.000	0.000	0.000	0.000
110	0.000	0.000	0.000	0.000	0.000	0.000	0.000	0.000	0.000	0.000
111	0.000	0.000	0.000	0.000	0.000	0.000	0.000	0.000	0.000	0.000
112	0.000	0.000	0.000	0.000	0.000	0.000	0.000	0.000	0.000	0.000
113	0.000	0.000	0.000	0.000	0.000	0.000	0.000	0.000	0.000	0.000
114	0.000	0.000	0.000	0.000	0.000	0.000	0.000	0.000	0.000	0.000
115	0.000	0.000	0.000	0.000	0.000	0.000	0.000	0.000	0.000	0.000
116	0.000	0.000	0.000	0.000	0.000	0.000	0.000	0.000	0.000	0.000



NVLAP LAB CODE 201074-0

177	0.000	0.000	0.000	0.000	0.000	0.000	0.000	0.000	0.000	0.000
178	0.000	0.000	0.000	0.000	0.000	0.000	0.000	0.000	0.000	0.000
179	0.000	0.000	0.000	0.000	0.000	0.000	0.000	0.000	0.000	0.000
180	0.000	0.000	0.000	0.000	0.000	0.000	0.000	0.000	0.000	0.000

Vert. Angles **Horizontal Angles**

	150	165	180	195	210	225	240	255	270	285
0	129.222	129.222	129.222	129.222	129.222	129.222	129.222	129.222	129.222	129.222
1	121.420	120.340	122.440	123.500	124.910	127.140	129.380	132.090	132.700	133.750
2	125.030	123.230	122.860	123.990	126.910	130.060	134.120	137.610	141.380	142.800
3	129.500	126.870	127.700	131.250	135.380	138.530	140.900	146.700	151.220	154.160
4	138.090	134.730	137.980	141.020	145.740	151.100	152.460	155.450	157.830	160.830
5	150.360	146.840	150.280	155.140	153.250	161.240	167.200	165.770	166.620	166.430
6	159.610	158.440	161.750	167.500	164.290	174.220	184.840	182.010	181.830	177.300
7	167.250	168.930	169.960	177.650	180.550	192.310	207.760	203.570	206.080	203.600
8	177.450	183.620	179.530	186.000	199.890	220.880	236.310	240.620	246.280	249.610
9	192.200	201.430	197.450	205.980	233.870	257.780	272.960	284.110	295.770	302.960
10	212.370	227.280	225.000	244.740	284.920	301.920	311.590	329.170	339.860	361.380
11	246.540	261.020	269.980	297.320	340.920	339.280	364.390	387.360	394.710	413.840
12	288.740	299.680	316.720	355.250	401.040	387.370	417.210	413.910	440.460	466.600
13	330.280	344.040	354.800	417.460	434.000	436.780	445.490	452.220	478.400	518.120
14	384.190	398.750	399.820	453.340	454.470	467.740	486.020	495.870	504.420	528.210
15	434.910	442.460	447.430	473.180	489.380	498.330	518.640	535.040	510.970	540.560
16	458.230	488.090	477.420	509.170	542.880	522.420	555.250	571.700	518.320	540.460
17	488.030	519.560	500.990	543.140	581.160	532.460	574.850	593.770	545.760	544.900
18	513.750	563.850	519.970	547.430	584.870	537.780	583.410	603.350	582.960	560.700
19	537.330	589.640	559.090	550.980	586.650	554.700	618.400	618.210	617.020	585.220
20	572.970	591.800	582.750	549.110	603.020	585.890	653.080	636.430	650.970	608.430
21	604.080	593.380	600.350	575.580	619.380	619.520	674.830	654.890	673.980	633.760
22	625.700	616.640	627.430	608.280	644.560	652.950	694.930	677.550	686.210	661.100
23	640.160	641.450	643.870	640.980	673.950	677.770	702.490	688.980	701.700	691.550
24	649.800	661.410	660.250	678.380	685.620	692.410	717.960	704.300	721.880	726.620
25	664.660	681.070	673.930	725.710	693.500	713.410	732.440	715.190	740.910	762.380
26	686.910	690.060	699.760	757.730	706.280	742.240	745.990	732.680	758.710	803.710
27	707.380	686.360	721.900	785.510	725.810	780.850	758.130	778.090	774.820	844.340
28	725.200	700.410	737.340	810.430	754.480	825.830	776.270	814.650	783.630	874.230
29	735.670	731.240	753.560	821.610	784.610	863.540	792.800	882.960	796.820	900.250
30	747.120	767.420	761.620	838.200	823.190	874.630	830.920	904.020	825.940	894.660
31	756.090	829.040	764.020	860.600	846.560	876.260	833.130	890.970	821.840	893.130
32	790.750	882.940	780.150	879.380	865.380	880.390	815.040	861.120	809.210	901.000
33	822.750	884.940	798.770	882.340	875.390	900.250	814.840	835.960	810.120	926.570
34	817.550	864.000	785.630	883.680	880.560	905.390	823.190	811.870	816.350	915.970
35	803.520	834.380	777.740	896.190	892.990	887.830	828.620	811.170	828.110	913.850
36	796.880	812.540	774.160	913.790	901.360	891.690	843.010	828.760	860.530	929.770
37	799.080	811.270	781.100	908.730	911.420	899.010	871.460	870.010	895.280	947.380
38	811.400	820.820	803.310	912.070	930.040	913.530	921.260	898.180	944.660	964.380
39	842.140	851.800	839.600	931.360	969.020	941.490	956.370	933.640	975.980	995.860
40	900.560	879.280	893.820	956.400	993.070	976.120	983.620	959.600	998.610	1029.500
41	944.380	898.210	936.980	982.660	1025.840	1021.790	997.020	998.040	1019.820	1074.810
42	971.640	922.930	973.140	1018.910	1073.790	1067.140	1027.500	1026.120	1053.020	1112.120
43	980.570	957.170	987.430	1064.690	1101.740	1116.960	1048.410	1079.460	1075.440	1153.130
44	1006.820	978.640	1009.660	1108.980	1124.810	1153.080	1094.090	1121.080	1126.330	1190.850
45	1021.150	1025.840	1024.420	1148.110	1154.390	1188.220	1141.330	1174.210	1163.810	1231.450
46	1058.490	1060.990	1064.680	1174.290	1192.620	1213.350	1190.970	1215.520	1218.130	1253.080
47	1094.810	1117.260	1098.100	1202.740	1235.370	1243.630	1247.210	1254.220	1255.540	1297.310
48	1143.590	1154.560	1149.970	1228.690	1288.660	1278.170	1289.690	1299.190	1288.100	1330.110
49	1193.010	1202.670	1191.910	1265.320	1341.700	1310.100	1341.000	1328.310	1339.710	1379.720
50	1229.960	1244.150	1231.020	1304.130	1407.700	1357.040	1375.830	1353.860	1373.830	1419.000
51	1287.760	1273.120	1271.970	1350.740	1470.560	1393.790	1406.960	1383.330	1392.720	1469.620



52	1315.570	1296.820	1297.180	1379.050	1543.310	1439.890	1426.510	1411.550	1424.010	1521.000
53	1342.830	1313.830	1324.360	1418.270	1603.340	1495.260	1469.400	1410.000	1453.300	1552.280
54	1369.480	1330.790	1351.120	1451.750	1666.390	1523.510	1475.910	1430.440	1457.360	1562.210
55	1397.020	1339.900	1386.900	1479.830	1691.360	1546.690	1477.510	1467.820	1469.780	1575.700
56	1413.020	1361.370	1394.300	1520.560	1734.790	1571.910	1497.090	1507.520	1485.820	1591.230
57	1421.620	1374.910	1415.730	1562.300	1780.160	1597.250	1512.670	1537.910	1515.790	1609.460
58	1418.780	1412.210	1425.870	1592.880	1829.940	1618.830	1551.130	1557.220	1540.040	1648.220
59	1423.590	1447.670	1449.850	1636.390	1898.180	1678.670	1565.910	1600.610	1562.860	1671.720
60	1446.620	1470.460	1482.550	1679.800	1988.480	1702.110	1569.500	1686.870	1577.890	1675.210
61	1467.810	1517.570	1492.790	1681.690	2092.420	1712.720	1591.190	1722.380	1597.290	1682.730
62	1484.980	1571.810	1511.420	1670.390	2187.210	1723.850	1610.210	1805.350	1599.190	1698.050
63	1497.360	1617.330	1517.830	1679.840	2246.990	1730.250	1667.080	1885.320	1656.530	1732.770
64	1512.760	1704.040	1530.370	1679.390	2283.460	1723.550	1744.460	1919.080	1694.000	1768.620
65	1534.230	1718.540	1554.280	1681.370	2281.870	1708.450	1796.500	1976.040	1682.190	1758.810
66	1572.880	1759.340	1578.420	1683.080	2265.330	1700.270	1807.090	1904.310	1673.630	1750.660
67	1642.960	1833.930	1640.180	1692.040	2275.320	1670.710	1735.230	1783.410	1605.630	1724.390
68	1653.920	1787.600	1627.250	1667.930	2257.250	1649.950	1617.800	1655.060	1551.650	1675.040
69	1634.220	1706.150	1548.070	1654.850	2208.650	1597.890	1531.010	1561.340	1506.040	1622.680
70	1584.590	1621.030	1500.880	1622.750	2101.780	1557.520	1503.690	1502.200	1456.520	1541.470
71	1528.180	1513.390	1469.460	1565.020	1988.210	1516.590	1440.320	1482.410	1386.860	1508.380
72	1469.290	1442.710	1429.820	1508.810	1878.460	1460.350	1399.310	1440.440	1314.010	1461.050
73	1390.880	1371.060	1370.030	1462.240	1768.710	1413.800	1335.340	1376.840	1240.210	1326.890
74	1325.010	1337.860	1313.540	1406.970	1695.610	1317.730	1271.360	1298.420	1119.890	1192.040
75	1243.930	1330.410	1256.910	1309.330	1615.680	1221.330	1182.180	1205.110	938.060	1037.080
76	1165.030	1297.370	1167.200	1210.220	1505.350	1087.320	992.980	1098.280	823.910	912.960
77	1073.110	1249.580	1067.650	1075.840	1341.580	952.610	857.120	999.340	707.500	768.810
78	930.550	1162.200	922.090	950.500	1177.370	825.940	733.970	854.890	602.650	636.060
79	825.470	1040.190	811.640	822.960	973.490	713.500	616.400	719.420	521.760	520.080
80	718.270	939.470	714.540	687.810	758.140	583.730	527.210	581.330	415.290	355.980
81	617.780	796.960	609.720	559.330	549.520	428.130	402.410	417.120	293.620	235.090
82	516.710	639.340	506.560	415.750	370.980	290.920	276.090	272.280	172.260	114.200
83	415.640	477.590	384.760	285.260	253.570	174.840	162.090	138.500	53.110	33.610
84	279.280	315.720	252.840	173.470	136.160	60.320	48.880	48.780	26.910	22.920
85	150.620	181.650	133.100	62.140	63.420	33.540	26.960	28.430	17.460	12.240
86	58.780	88.800	45.980	33.330	44.740	20.090	14.020	19.020	8.090	4.820
87	37.510	46.030	30.450	19.950	28.600	6.720	5.500	10.040	2.670	1.770
88	17.920	25.160	14.910	6.610	12.450	2.790	1.750	1.110	0.570	0.510
89	6.400	11.470	4.670	2.420	1.670	0.880	0.460	0.280	0.280	0.280
90	0.000	0.000	0.000	0.000	0.000	0.000	0.000	0.000	0.000	0.000
91	0.000	0.000	0.000	0.000	0.000	0.000	0.000	0.000	0.000	0.000
92	0.000	0.000	0.000	0.000	0.000	0.000	0.000	0.000	0.000	0.000
93	0.000	0.000	0.000	0.000	0.000	0.000	0.000	0.000	0.000	0.000
94	0.000	0.000	0.000	0.000	0.000	0.000	0.000	0.000	0.000	0.000
95	0.000	0.000	0.000	0.000	0.000	0.000	0.000	0.000	0.000	0.000
96	0.000	0.000	0.000	0.000	0.000	0.000	0.000	0.000	0.000	0.000
97	0.000	0.000	0.000	0.000	0.000	0.000	0.000	0.000	0.000	0.000
98	0.000	0.000	0.000	0.000	0.000	0.000	0.000	0.000	0.000	0.000
99	0.000	0.000	0.000	0.000	0.000	0.000	0.000	0.000	0.000	0.000
100	0.000	0.000	0.000	0.000	0.000	0.000	0.000	0.000	0.000	0.000
101	0.000	0.000	0.000	0.000	0.000	0.000	0.000	0.000	0.000	0.000
102	0.000	0.000	0.000	0.000	0.000	0.000	0.000	0.000	0.000	0.000
103	0.000	0.000	0.000	0.000	0.000	0.000	0.000	0.000	0.000	0.000
104	0.000	0.000	0.000	0.000	0.000	0.000	0.000	0.000	0.000	0.000
105	0.000	0.000	0.000	0.000	0.000	0.000	0.000	0.000	0.000	0.000
106	0.000	0.000	0.000	0.000	0.000	0.000	0.000	0.000	0.000	0.000
107	0.000	0.000	0.000	0.000	0.000	0.000	0.000	0.000	0.000	0.000
108	0.000	0.000	0.000	0.000	0.000	0.000	0.000	0.000	0.000	0.000
109	0.000	0.000	0.000	0.000	0.000	0.000	0.000	0.000	0.000	0.000
110	0.000	0.000	0.000	0.000	0.000	0.000	0.000	0.000	0.000	0.000
111	0.000	0.000	0.000	0.000	0.000	0.000	0.000	0.000	0.000	0.000

172	0.000	0.000	0.000	0.000	0.000	0.000	0.000	0.000	0.000	0.000
173	0.000	0.000	0.000	0.000	0.000	0.000	0.000	0.000	0.000	0.000
174	0.000	0.000	0.000	0.000	0.000	0.000	0.000	0.000	0.000	0.000
175	0.000	0.000	0.000	0.000	0.000	0.000	0.000	0.000	0.000	0.000
176	0.000	0.000	0.000	0.000	0.000	0.000	0.000	0.000	0.000	0.000
177	0.000	0.000	0.000	0.000	0.000	0.000	0.000	0.000	0.000	0.000
178	0.000	0.000	0.000	0.000	0.000	0.000	0.000	0.000	0.000	0.000
179	0.000	0.000	0.000	0.000	0.000	0.000	0.000	0.000	0.000	0.000
180	0.000	0.000	0.000	0.000	0.000	0.000	0.000	0.000	0.000	0.000

Vert. Angles	Horizontal Angles				
	300	315	330	345	360
0	129.222	129.222	129.222	129.222	129.222
1	134.610	134.570	135.540	136.030	138.940
2	144.870	145.850	144.690	144.780	146.540
3	153.640	152.070	149.490	148.780	154.000
4	161.160	158.060	156.620	155.120	165.690
5	166.710	166.180	167.280	167.410	180.460
6	177.280	176.560	179.430	181.780	196.060
7	196.220	199.340	203.350	207.270	216.430
8	228.960	237.980	239.800	241.300	244.390
9	290.080	292.860	287.790	287.310	288.770
10	336.200	359.250	342.140	330.010	337.660
11	384.130	416.820	390.250	374.370	380.630
12	418.210	459.010	446.000	433.570	433.180
13	455.430	491.910	493.920	480.720	476.370
14	504.280	519.950	512.510	521.530	505.130
15	542.390	545.120	524.500	550.790	530.020
16	579.360	556.670	548.950	566.810	539.220
17	610.570	570.250	581.560	582.890	576.420
18	630.110	584.180	601.220	592.760	608.370
19	649.760	601.640	612.170	608.440	627.960
20	672.930	624.530	629.630	627.480	642.570
21	684.390	641.550	647.090	645.970	662.510
22	692.730	658.750	665.140	659.290	672.800
23	705.400	687.460	681.790	675.520	686.590
24	719.370	722.190	701.090	692.010	712.060
25	739.640	768.900	721.740	702.750	736.220
26	755.010	804.170	746.410	716.960	756.910
27	778.490	827.940	759.660	745.320	770.170
28	801.250	847.480	768.890	785.930	783.680
29	845.610	868.670	778.320	819.000	785.120
30	888.140	878.650	777.040	858.710	782.560
31	895.280	890.900	791.660	882.560	800.210
32	894.390	885.840	813.330	852.930	818.940
33	888.980	887.240	791.730	825.220	799.820
34	898.590	911.480	782.570	802.090	795.200
35	905.470	936.080	790.090	787.920	799.000
36	915.770	933.040	800.450	781.880	801.280
37	933.240	943.630	825.820	798.120	815.660
38	963.000	954.300	864.180	854.190	844.330
39	1008.740	966.510	921.400	902.190	901.280
40	1052.090	992.760	969.740	927.100	952.310
41	1092.200	1033.470	992.970	945.230	977.180
42	1108.040	1078.470	1002.700	973.300	988.750
43	1127.590	1135.190	1023.110	996.280	1018.480
44	1150.990	1182.450	1047.160	1034.860	1040.490
45	1185.520	1211.150	1087.330	1084.120	1075.500
46	1219.200	1234.890	1138.270	1129.200	1122.220

47	1273.660	1255.220	1182.080	1179.450	1161.570
48	1327.160	1291.490	1233.270	1212.110	1208.390
49	1394.640	1331.650	1262.510	1253.640	1241.340
50	1483.940	1366.600	1307.690	1285.220	1283.690
51	1551.650	1400.910	1341.200	1323.610	1315.140
52	1626.840	1433.220	1369.220	1338.550	1346.120
53	1693.840	1479.530	1382.660	1375.050	1366.090
54	1748.250	1510.050	1425.630	1384.850	1415.520
55	1801.100	1540.100	1427.300	1401.320	1432.200
56	1871.960	1574.690	1424.070	1435.370	1432.380
57	1966.920	1604.380	1440.010	1455.730	1450.160
58	2044.410	1640.910	1467.930	1512.940	1473.790
59	2112.250	1667.540	1492.410	1527.480	1509.830
60	2159.470	1682.450	1493.880	1579.090	1502.200
61	2191.000	1701.280	1518.310	1673.310	1511.920
62	2192.380	1710.040	1541.390	1700.430	1529.100
63	2197.630	1733.190	1565.710	1748.750	1524.740
64	2223.650	1759.250	1655.500	1810.590	1556.490
65	2236.250	1727.920	1671.520	1868.760	1652.060
66	2250.510	1712.840	1654.770	1890.840	1686.990
67	2317.770	1695.120	1629.200	1731.040	1625.170
68	2275.720	1650.910	1552.570	1623.420	1557.420
69	2181.110	1607.890	1474.790	1610.790	1505.450
70	1998.180	1568.400	1442.870	1596.180	1464.560
71	1866.280	1508.270	1378.980	1553.310	1436.740
72	1732.790	1461.240	1310.030	1469.980	1371.060
73	1573.630	1320.890	1241.050	1362.790	1304.890
74	1431.160	1180.280	1158.920	1255.600	1218.840
75	1279.610	1047.770	982.100	1179.520	1101.770
76	1127.820	897.230	864.910	1121.760	957.720
77	933.000	760.420	736.760	981.300	827.230
78	715.160	643.290	638.180	810.200	704.490
79	541.360	519.570	547.160	675.750	599.660
80	367.260	378.800	443.620	553.980	504.450
81	231.660	255.000	312.970	407.210	393.370
82	138.150	131.200	192.020	277.240	231.850
83	69.300	41.430	72.480	170.980	111.210
84	36.880	28.050	35.690	66.900	57.670
85	24.550	14.680	21.300	45.120	34.080
86	12.220	5.320	7.030	28.080	10.480
87	2.630	1.750	2.380	11.040	5.380
88	0.450	0.510	0.530	0.870	2.430
89	0.280	0.280	0.260	0.270	0.760
90	0.000	0.000	0.000	0.000	0.000
91	0.000	0.000	0.000	0.000	0.000
92	0.000	0.000	0.000	0.000	0.000
93	0.000	0.000	0.000	0.000	0.000
94	0.000	0.000	0.000	0.000	0.000
95	0.000	0.000	0.000	0.000	0.000
96	0.000	0.000	0.000	0.000	0.000
97	0.000	0.000	0.000	0.000	0.000
98	0.000	0.000	0.000	0.000	0.000
99	0.000	0.000	0.000	0.000	0.000
100	0.000	0.000	0.000	0.000	0.000
101	0.000	0.000	0.000	0.000	0.000
102	0.000	0.000	0.000	0.000	0.000
103	0.000	0.000	0.000	0.000	0.000
104	0.000	0.000	0.000	0.000	0.000
105	0.000	0.000	0.000	0.000	0.000
106	0.000	0.000	0.000	0.000	0.000



107	0.000	0.000	0.000	0.000	0.000
108	0.000	0.000	0.000	0.000	0.000
109	0.000	0.000	0.000	0.000	0.000
110	0.000	0.000	0.000	0.000	0.000
111	0.000	0.000	0.000	0.000	0.000
112	0.000	0.000	0.000	0.000	0.000
113	0.000	0.000	0.000	0.000	0.000
114	0.000	0.000	0.000	0.000	0.000
115	0.000	0.000	0.000	0.000	0.000
116	0.000	0.000	0.000	0.000	0.000
117	0.000	0.000	0.000	0.000	0.000
118	0.000	0.000	0.000	0.000	0.000
119	0.000	0.000	0.000	0.000	0.000
120	0.000	0.000	0.000	0.000	0.000
121	0.000	0.000	0.000	0.000	0.000
122	0.000	0.000	0.000	0.000	0.000
123	0.000	0.000	0.000	0.000	0.000
124	0.000	0.000	0.000	0.000	0.000
125	0.000	0.000	0.000	0.000	0.000
126	0.000	0.000	0.000	0.000	0.000
127	0.000	0.000	0.000	0.000	0.000
128	0.000	0.000	0.000	0.000	0.000
129	0.000	0.000	0.000	0.000	0.000
130	0.000	0.000	0.000	0.000	0.000
131	0.000	0.000	0.000	0.000	0.000
132	0.000	0.000	0.000	0.000	0.000
133	0.000	0.000	0.000	0.000	0.000
134	0.000	0.000	0.000	0.000	0.000
135	0.000	0.000	0.000	0.000	0.000
136	0.000	0.000	0.000	0.000	0.000
137	0.000	0.000	0.000	0.000	0.000
138	0.000	0.000	0.000	0.000	0.000
139	0.000	0.000	0.000	0.000	0.000
140	0.000	0.000	0.000	0.000	0.000
141	0.000	0.000	0.000	0.000	0.000
142	0.000	0.000	0.000	0.000	0.000
143	0.000	0.000	0.000	0.000	0.000
144	0.000	0.000	0.000	0.000	0.000
145	0.000	0.000	0.000	0.000	0.000
146	0.000	0.000	0.000	0.000	0.000
147	0.000	0.000	0.000	0.000	0.000
148	0.000	0.000	0.000	0.000	0.000
149	0.000	0.000	0.000	0.000	0.000
150	0.000	0.000	0.000	0.000	0.000
151	0.000	0.000	0.000	0.000	0.000
152	0.000	0.000	0.000	0.000	0.000
153	0.000	0.000	0.000	0.000	0.000
154	0.000	0.000	0.000	0.000	0.000
155	0.000	0.000	0.000	0.000	0.000
156	0.000	0.000	0.000	0.000	0.000
157	0.000	0.000	0.000	0.000	0.000
158	0.000	0.000	0.000	0.000	0.000
159	0.000	0.000	0.000	0.000	0.000
160	0.000	0.000	0.000	0.000	0.000
161	0.000	0.000	0.000	0.000	0.000
162	0.000	0.000	0.000	0.000	0.000
163	0.000	0.000	0.000	0.000	0.000
164	0.000	0.000	0.000	0.000	0.000
165	0.000	0.000	0.000	0.000	0.000
166	0.000	0.000	0.000	0.000	0.000



167	0.000	0.000	0.000	0.000	0.000
168	0.000	0.000	0.000	0.000	0.000
169	0.000	0.000	0.000	0.000	0.000
170	0.000	0.000	0.000	0.000	0.000
171	0.000	0.000	0.000	0.000	0.000
172	0.000	0.000	0.000	0.000	0.000
173	0.000	0.000	0.000	0.000	0.000
174	0.000	0.000	0.000	0.000	0.000
175	0.000	0.000	0.000	0.000	0.000
176	0.000	0.000	0.000	0.000	0.000
177	0.000	0.000	0.000	0.000	0.000
178	0.000	0.000	0.000	0.000	0.000
179	0.000	0.000	0.000	0.000	0.000
180	0.000	0.000	0.000	0.000	0.000

4.0 LM-79 Measurement and Test Results

4.3 THD and PF Test

Model No.	ALED5T52Y/D10	Sample ID.	B1
Temperature (°C)	25.3	Humidity (%RH)	56.0

Test Method

The samples were tested according to the ANSI C82.77:2002.

The total harmonic distortion shall be measured to the 40th order.

The ambient temperature condition was maintained at 25° C ± 1° C. The sample measurements were made using a digital power meter and power supply. The sample was operated at rated voltage and was stabilized before measurement. The total harmonic distortion were calculated.

Test Results

Voltage (Vac)	Frequency (Hz)	Current (A)	Power (W)	Power Factor	THD
119.94	60	0.447	53.6	0.999	3.27%
277.01	60	0.195	52.0	0.964	6.42%

5.0 Equipment Information

Test Equipment			
Equipment ID	Equipment Name	Last Calibration Date	Calibration Due Date
DLF107	Integrating Sphere System	2020/12/26	2021/12/25
DLF108	Auxiliary Lamp	2020/12/26	2021/12/25
DLF122	Measurement Standard Lamp Standard Lamp Type: 220 V, 0.4720 A, Tungsten, Omni-derectional	2020/12/26	2021/12/25
DLF116	AC Power Source	2020/12/26	2021/12/25
DLF113	Power Meter	2020/12/26	2021/12/25
DLF112	Temperature Recorder	2020/12/26	2021/12/25
DLF114	Temperature & Humidity Datalogger	2020/12/26	2021/12/25
DLF101	Goniophotometer	2020/12/26	2021/12/25
DLF125	Standard Lamp Standard Lamp Type: 76.58 V, 6.7875 A, Tungsten, Omni-derectional	2020/12/26	2021/12/25
DLF104	AC Power Source	2020/12/26	2021/12/25
DLF507	DC Power Source	2020/12/26	2021/12/25
DLF102	Power Meter	2020/12/26	2021/12/25
DLF111	Temperature & Humidity Datalogger	2020/12/26	2021/12/25
DLF119	Power Meter	2020/12/26	2021/12/25
DLF031	Temperature data logger	2020/12/26	2021/12/25
DLF022	Digital power meter	2020/12/26	2021/12/25
DLF003	Temperature & Humidity Datalogger	2020/12/26	2021/12/25

***** End of Test Report*****