

Photometric Test Report

Relevant Standards

- ☒ IES LM-79-2008
- ☒ ANSI C82.77:2017

Prepared For

RAB Lighting Inc.

Room 6A33, No.1388, Wuzhong road, Shanghai, China

Xiao Xiang, 15921313292, Gary.Xiao@rabweb.com

Prepared By

Deliver Co., Ltd.

Block 11, 78 Keling Road, SSTP, Suzhou, China

0512-66801950, kevin.jia@szdeliver.com

Project Number

DLF2201106

Report Number

DLF2201106-1a

Test Date

2022/1/12

Issue Date


2022/1/13

Prepared By



Wangzun Zhu

Approved By



Kevin Jia

The results contained in this report pertain only to the tested sample.

This report shall not be reproduced, except in full, without written approval of Deliver Co., Ltd.

This report must not be used by the client to claim product certification, approval, or endorsement by NVLAP.

1.0 Test Summary

DLC Technical Requirements v5.1

Outdoor - Pole/Arm-Mounted Area and Roadway Luminaires				
Requirement Category	Test Method	Requirements		Test value
Luminaire Output (lm) (Goniophotometer - Section 4.2)	IES LM-79-2008	1000		11592
Minimum Luminaire Efficacy (lm/W) (Goniophotometer - Section 4.2)	IES LM-79-2008	Standard 105	Premium 120	156.4
Power (Input Wattage) (W) (Goniophotometer - Section 4.2)	IES LM-79-2008	Worst Case		74.1
Total Harmonic Distortion (A%) (THD & PF - section 4.3)	ANSI C82.77:2014	20.00%		22.31%
Power Factor (THD & PF - section 4.3)	ANSI C82.77:2014	0.9		0.863
Allowable CCTs* (K) (Integrating Sphere - Section 4.1)	IES LM-79-2008	7 step	3985±275	3892
		4 step	3985±154	
Minimum CRI (Integrating Sphere - Section 4.1)	IES LM-79-2008 CIE 13.3-1995	≥70		84
Minimum R9 (Integrating Sphere - Section 4.1)	IES LM-79-2008 CIE 13.3-1995	≥-40		11
Minimum Rf (Integrating Sphere - Section 4.1)	ANSI/IES TM-30-18	≥70		85
Minimum Rg (Integrating Sphere - Section 4.1)	ANSI/IES TM-30-18	≥89		96
IES Rcs,h1 (Integrating Sphere - Section 4.1)	ANSI/IES TM-30-18	-18%≤IES Rcs,h1≤+23%		-12%
Zonal Lumen Requirement (0°-90°) (Goniophotometer - Section 4.2)	IES LM-79-2008	100%		100.00%
Zonal Lumen Requirement (80°-90°) (Goniophotometer - Section 4.2)	IES LM-79-2008	≤10%		0.51%
Input Voltage (V) (Goniophotometer - Section 4.2)	IES LM-79-2008	Worst Case		480
Input Current (A) (Goniophotometer - Section 4.2)	IES LM-79-2008	Worst Case		0.180

2.0 Test List

Test Item	Test	Test Date	Model Number	Sample No.
1	Integrating Sphere Test	2022/1/12	ALEDM5TN/480	A1
2	Goniophotometer Test	2022/1/12	ALEDM5TN/480	A1
3	THD and PF Test	2022/1/12	ALEDM5TN/480	A1

Remark(If any)

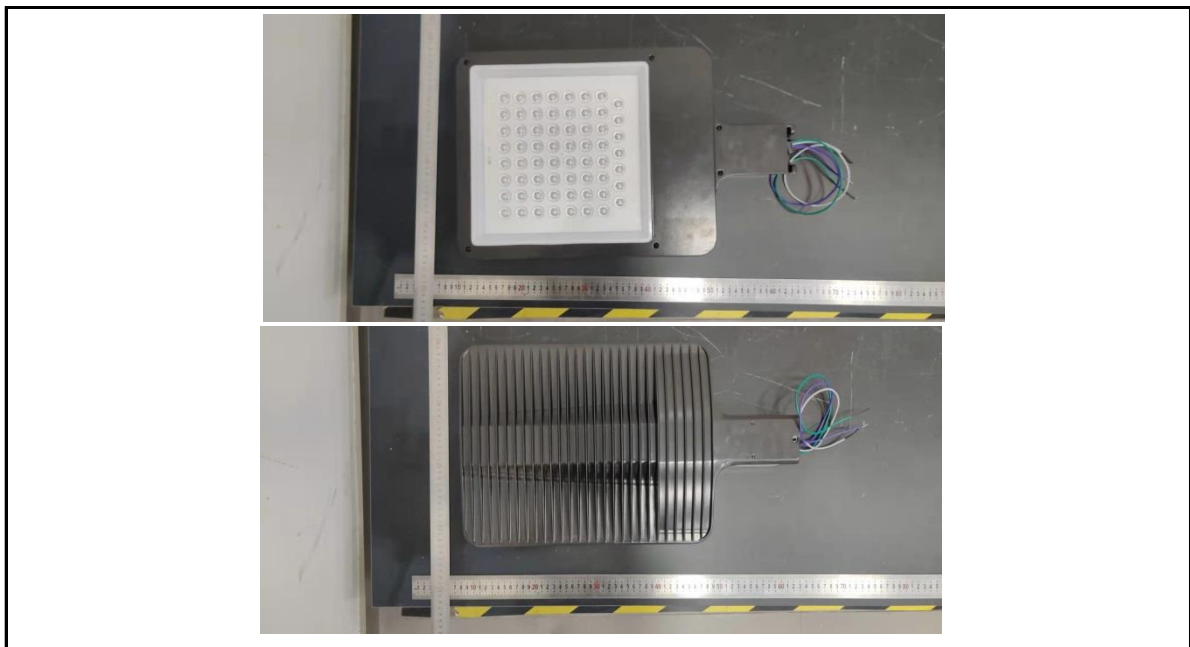
- 1、 This report shall not be used by the client to claim product endorsement by NVLAP, NIST or any agency of the US government.
- 2、 The results reported herein have been performed in accordance with the laboratory's terms of accreditation. This report shall not be reproduced except in full without the written approval of the Laboratory. The results in this report apply to the test sample(s) mentioned above at the time of the testing period only and are not to be used to indicate applicability to other similar products. This report does not imply that the product(s) has met the criteria for certification.

3.0 Production Description

Luminaire Description: 78W/10,000 lm @ 4000K

Electrical Specification: 480V,50/60HZ

Photos of Luminaire Characteristics



4.0 LM-79 Measurement and Test Results

4.1 Integrating Sphere Test

Model No.	ALEDM5TN/480	Sample ID.	A1
Operate time (Min.)	90	Stabilization time (Min.)	45
Temperature (°C)	25.3	Humidity (%RH)	56.0

Test Method

The samples were tested according to the IES LM-79-2008.

Photometric parameters were measured using an integrating sphere, a spectroradiometer and software. The ambient temperature condition inside the sphere was maintained at $25^{\circ}\text{C} \pm 1^{\circ}\text{C}$.

The sample measurements were made using a spectroradiometer connected by a fiber optic cable and detector through the detector port of the integrating sphere.

The voltage of an AC power supply (RMS voltage) or DC power supply (instantaneous voltage) applied to the device under test shall be regulated to within ± 0.2 percent under load.

The sample was measured using 4π geometry and operated at rated voltage and was stabilized before measurement. Chromaticity coordinates, correlated color temperature and color rendering index were calculated from the spectral radiant flux measurements taken at 1 nm intervals over the range of 380 to 780 nm.

Test Result

Voltage (Vac)	Frequency (Hz)	Current (A)	Power (W)	Power Factor
480.03	60	0.181	74.9	0.863

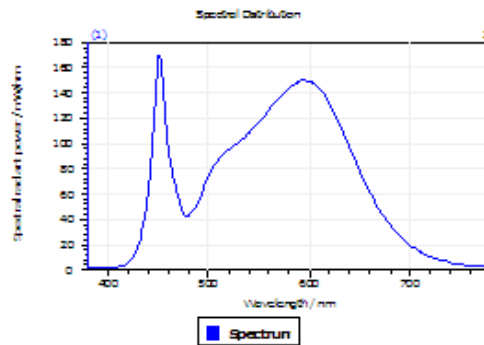
Test Result

CCT (K)	CRI	R9	Duv
3892	84	11	0.000033

Rf	Rg	IES Rcs,h1
85	96	-12%

4.1 Integrating Sphere Test

Results



Spectral values

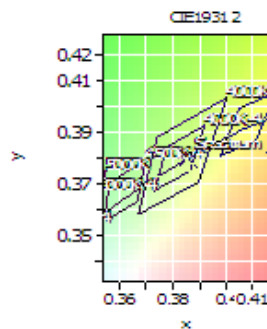
DominantWavelength	579.46 nm
Purity	0.297
PeakWavelength	451.32 nm
Radiant Power	26 W
Width50%	18.88 nm

Color Coordinates

Correlated Color Temperat 3892 K

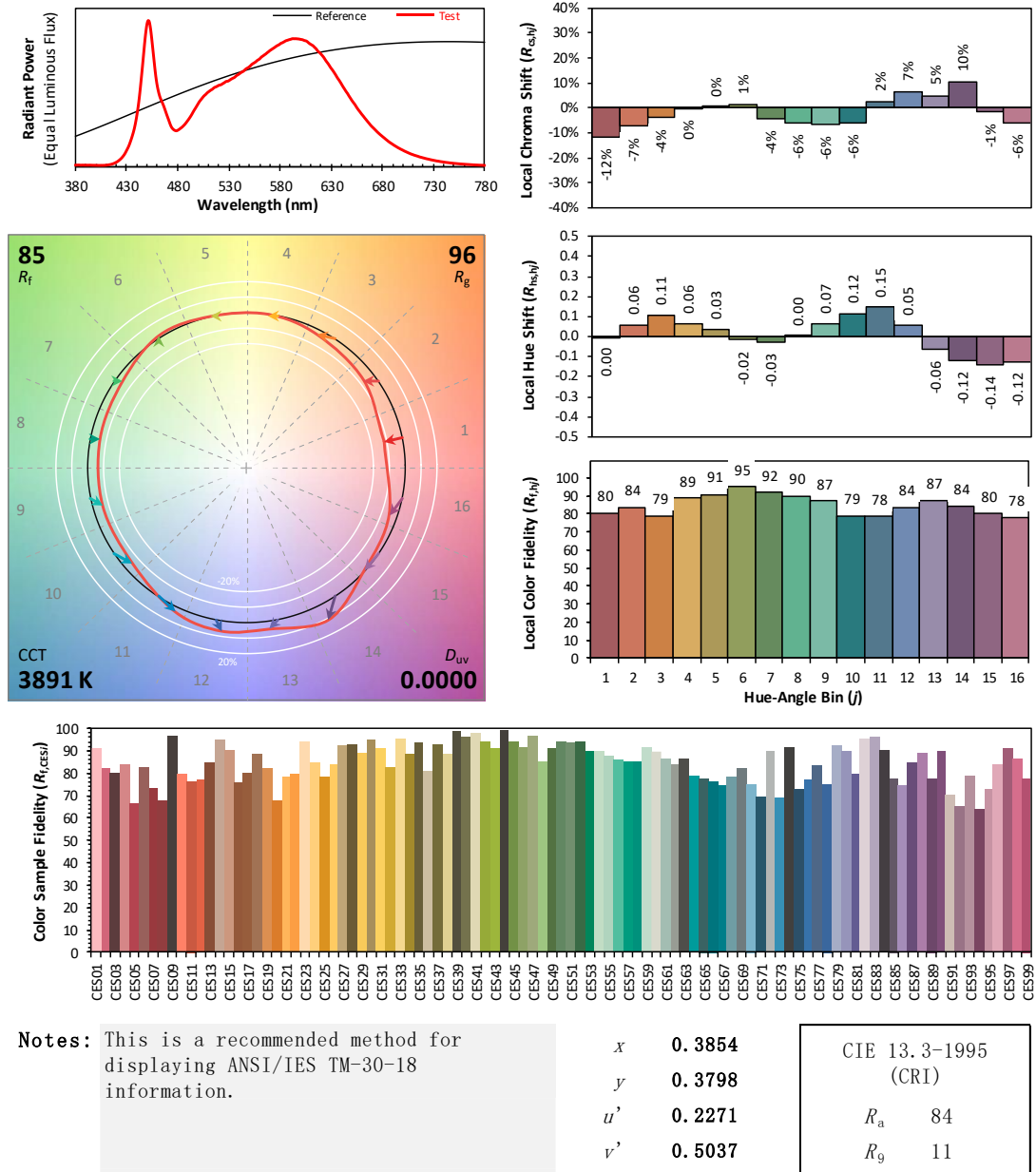
x: 0.3854 u: 0.2271 u': 0.2271
y: 0.3798 v: 0.3358 v': 0.5037

ResultsCRICRI01	81.9	ResultsCRICRI09	11.0
ResultsCRICRI02	90.1	ResultsCRICRI10	76.7
ResultsCRICRI03	95.6	ResultsCRICRI11	81.6
ResultsCRICRI04	82.5	ResultsCRICRI12	63.8
ResultsCRICRI05	82.4	ResultsCRICRI13	83.8
ResultsCRICRI06	86.5	ResultsCRICRI14	97.9
ResultsCRICRI07	85.9	ResultsCRICRI15	75.7
ResultsCRICRI08	64.8	ResultsCRICRI16	73.3
ResultsCRI	83.7		



PlanckDistance 3.3E-005

4.1 Integrating Sphere Test



Colors are for visual orientation purposes only. Created with the ANSI/IES TM-30-18 Calculator Version 2.0

4.0 LM-79 Measurement and Test Results

4.2 Goniophotometer Test

Model No.	ALEDM5TN/480	Sample ID.	A1
Opreate time (Min.)	90	Stabilization time (Min.)	45
Temperature (°C)	25.3	Humidity (%RH)	54.0

Test Method

The samples were tested according to the IES LM-79-2008.

Photometric paramters were measured using a type C goniophotometer and software.

The ambient temperature shall be maintained at $25^{\circ}\text{C} \pm 1^{\circ}\text{C}$, measured at a point not more than 1 m from the sample and at the same height as the sample.

The voltage of an AC power supply (RMS voltage) or DC power supply (instantaneous voltage) applied to the device under test shall be regulated to within ± 0.2 percent under load.

The samples were operated at rated voltage and was stabilized before measurement. Luminous flux, luminaire efficacy, zonal lumen were calculated from the software taken at 0.5° vertical intervals and 10° horizontal intervals.

Test Conditions

Condition	Voltage (Vac)	Frequency (Hz)	Current (A)	Power (W)	Power Factor
WORST CASE	479.95	60	0.180	74.1	0.857

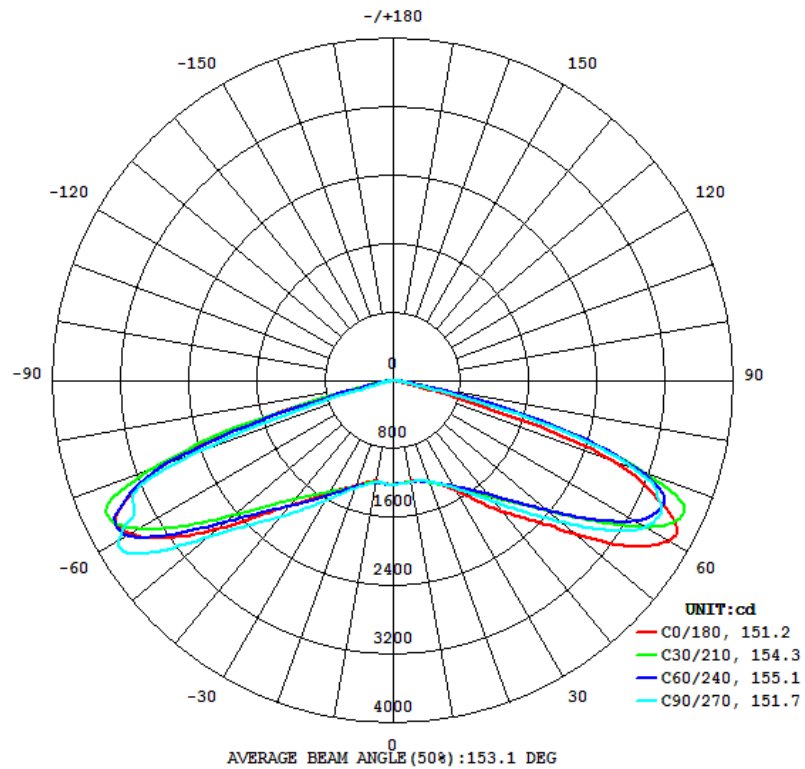
Test Result

Flux (lm)	Field Angle(10%)		Beam Angle(50%)		Luminous Efficacy (lm/W)
	C0-180	C90-270	C0-180	C90-270	
11592	158.7	158.4	151.2	151.7	156.4

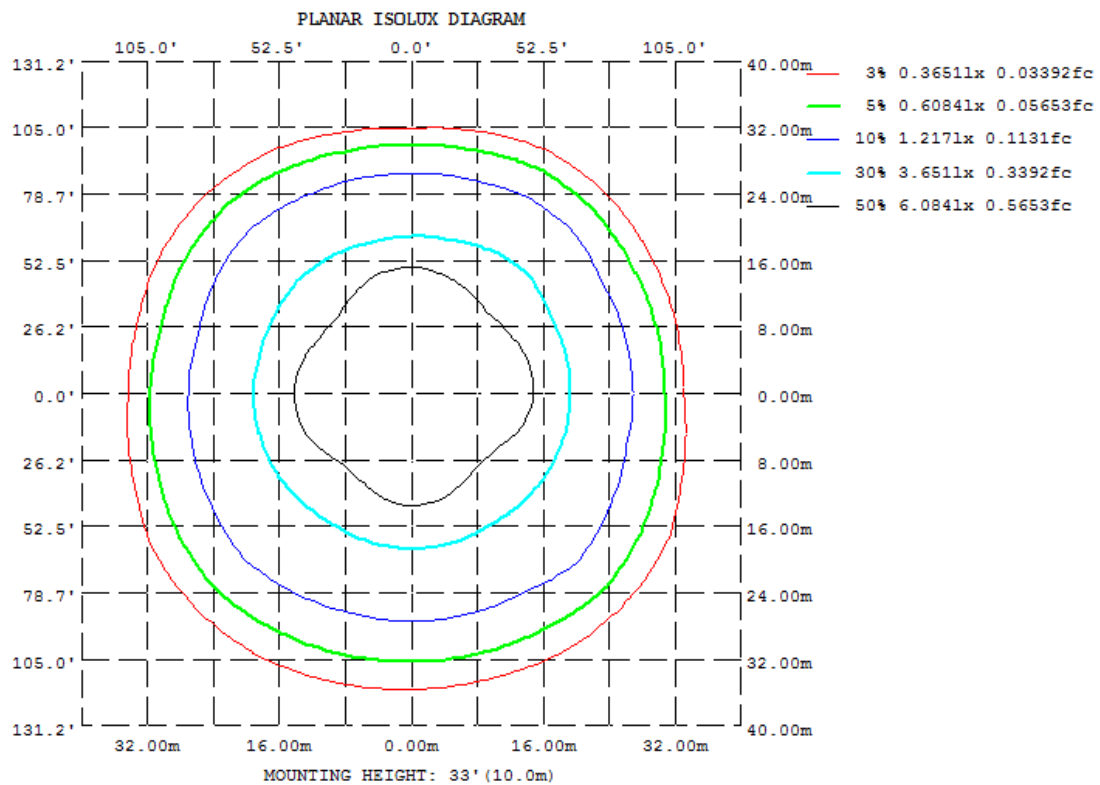
Zonal Lumen Requirement (0° - 90°)	Zonal Lumen Requirement (80° - 90°)	BUG rating
100.00%	0.51%	B3-U0-G2

4.2 Goniophotometer Test

Light Distrubtion Curve



Isolux Plot



4.2 Goniophotometer Test

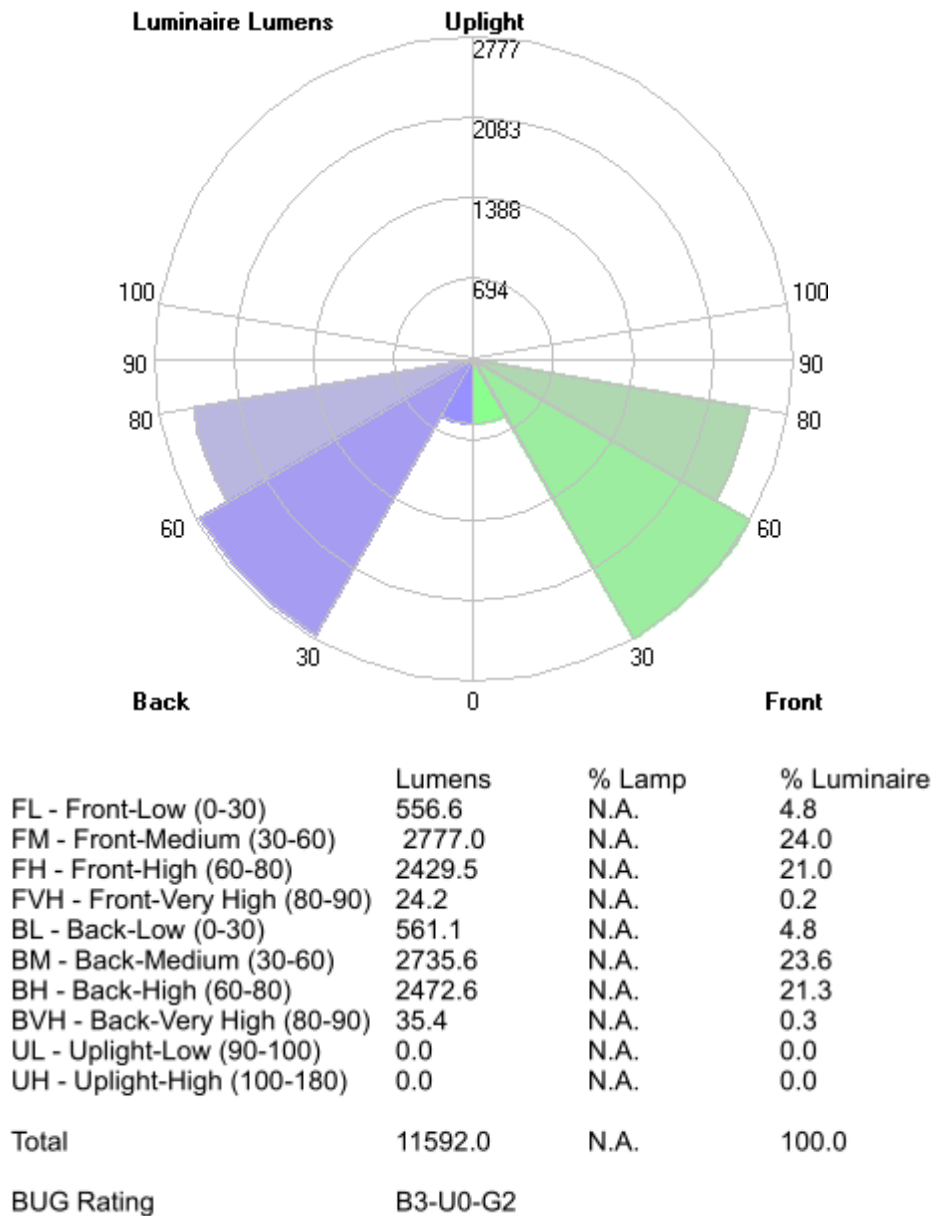
Zonal Lumen Summary

γ	C0	C45	C90	C135	C180	C225	C270	C315
10	1197	1209	1207	1211	1200	1216	1215	1221
20	1269	1276	1267	1300	1309	1322	1346	1337
30	1489	1413	1455	1483	1514	1510	1622	1532
40	2002	1702	1851	1755	1907	1818	2080	1870
50	2787	2268	2568	2290	2695	2422	2845	2486
60	3737	3302	3424	3271	3578	3534	3725	3807
70	2755	3521	3022	3426	2855	3216	2482	3114
80	88.15	329.8	141.6	432.5	127.7	183.2	74.33	107.1
90	0	0	0	0	0	0	0	0
100	0	0	0	0	0	0	0	0
110	0	0	0	0	0	0	0	0
120	0	0	0	0	0	0	0	0
130	0	0	0	0	0	0	0	0
140	0	0	0	0	0	0	0	0
150	0	0	0	0	0	0	0	0
160	0	0	0	0	0	0	0	0
170	0	0	0	0	0	0	0	0
180	0	0	0	0	0	0	0	0
DEG	LUMINOUS INTENSITY:cd							

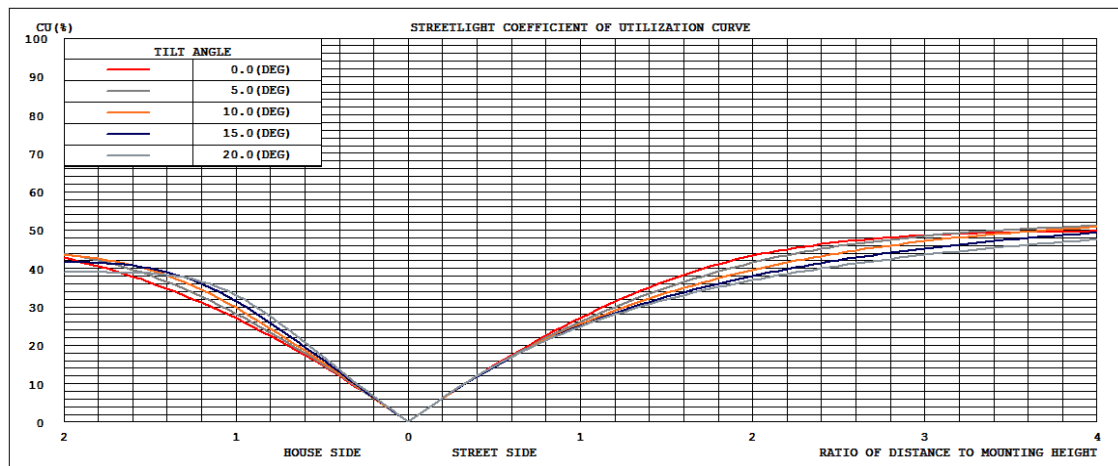
	Zonal (lm)		Total (lm)	Percent
0-10	115.81	0 - 10	115.81	1.00%
10-20	354.22	0 - 20	470.03	4.05%
20-30	647.73	0 - 30	1117.76	9.64%
30-40	1057.80	0 - 40	2175.56	18.77%
40-50	1693.71	0 - 50	3869.27	33.38%
50-60	2761.06	0 - 60	6630.33	57.20%
60-70	3462.53	0 - 70	10092.86	87.07%
70-80	1439.57	0 - 80	11532.43	99.49%
80-90	59.61	0 - 90	11592.04	100.00%
90-100	0.00	0 - 100	11592.04	100.00%
100-110	0.00	0 - 110	11592.04	100.00%
110-120	0.00	0 - 120	11592.04	100.00%
120-130	0.00	0 - 130	11592.04	100.00%
130-140	0.00	0 - 140	11592.04	100.00%
140-150	0.00	0 - 150	11592.04	100.00%
150-160	0.00	0 - 160	11592.04	100.00%
160-170	0.00	0 - 170	11592.04	100.00%
170-180	0.00	0 - 180	11592.04	100.00%

4.2 Goniophotometer Test

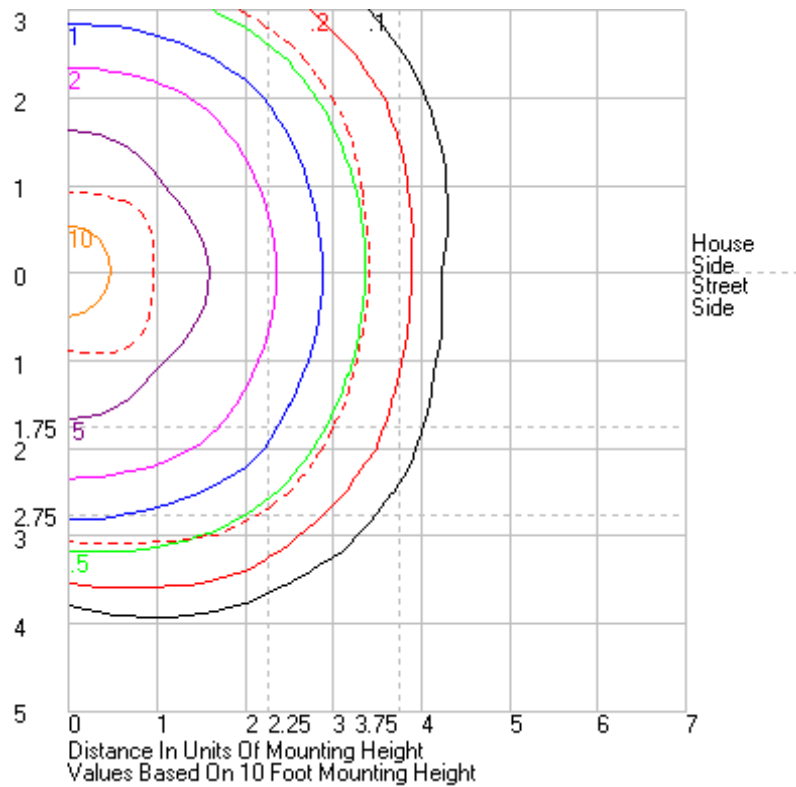
LCS/BUG



Coefficients of Utilization



Isolines



4.2 Goniophotometer Test

	0	15	30	45	60	75	90	105	120	135	150	165	180	195	210	225	240	255	270	285	300	315	330	345	360
0	1218.59	1218.59	1218.59	1218.59	1218.59	1218.59	1218.59	1218.59	1218.59	1218.59	1218.59	1218.59	1218.59	1218.59	1218.59	1218.59	1218.59	1218.59	1218.59	1218.59	1218.59	1218.59	1218.59	1218.59	1218.59
1	1216.38	1216.17	1215.94	1215.73	1216.39	1217.74	1218.87	1219.34	1220.21	1221.32	1221.76	1222.83	1218.87	1219.11	1219.14	1218.87	1219.35	1219.82	1220.91	1220.47	1220.24	1220.02	1219.79	1219.56	1216.38
2	1217.95	1217.73	1217.27	1215.93	1215.27	1216.17	1217.97	1219.54	1220.22	1221.13	1221.82	1222.94	1219.98	1220.9	1221.34	1220.69	1221.35	1221.14	1221.81	1221.35	1221.42	1222.26	1222.68	1221.76	1217.95
3	1216.42	1215.95	1215.74	1216.18	1215.92	1216.34	1218.11	1219.09	1219.78	1220.69	1220.91	1221.41	1218.62	1219.53	1220.62	1220.66	1221.74	1221.54	1221.32	1221.35	1223.16	1222.62	1221.57	1220.43	1216.42
4	1213.72	1212.61	1213.3	1214.84	1216.82	1216.51	1218.26	1219.54	1219.55	1218.65	1218.06	1219.57	1217.47	1218.63	1218.64	1219.74	1220.13	1219.44	1219.47	1219.91	1222.92	1222.97	1221.11	1218.61	1213.72
5	1210.77	1209.63	1211.42	1213.23	1217.51	1217.05	1218.41	1219.1	1219.32	1217.3	1215.95	1215.16	1214.04	1217.15	1218.86	1217.95	1217.26	1216.04	1215.83	1217.02	1221.28	1222.88	1219.98	1216.59	1210.77
6	1206.15	1205.02	1209.01	1212.34	1217.3	1216.39	1217.07	1218.66	1219.31	1216.4	1212.39	1209.95	1209.35	1213.22	1217.5	1216.16	1214.35	1212.03	1211.56	1214.11	1218.81	1220.86	1218.18	1213.39	1206.15
7	1202.54	1201.73	1204.9	1211.45	1215.54	1215.95	1215.95	1217.79	1219.11	1215.27	1208.26	1204.82	1204.81	1209.35	1215.24	1215.42	1212.52	1209.57	1208.93	1211.85	1216.37	1218.61	1217.06	1211.86	1202.54
8	1199.96	1198.4	1203.29	1210.56	1213.92	1212.8	1212.14	1216.19	1218.2	1213.24	1204.42	1200.22	1201.86	1207.34	1212.54	1214.34	1211.65	1208.97	1208.5	1210.99	1215.71	1217.75	1216.83	1210.06	1199.96
9	1198.56	1198.1	1203.29	1208.96	1211.69	1211.24	1209.86	1214.35	1216.85	1212.12	1203.07	1197.46	1199.44	1206.7	1210.97	1214.37	1213.72	1210.97	1210.36	1213.09	1216.18	1218.71	1217.55	1210.29	1198.56
10	1196.98	1196.99	1205.32	1208.71	1210.97	1209.2	1206.93	1213.68	1215.95	1211.42	1203.29	1197.86	1199.51	1208.27	1211.45	1215.77	1218.22	1214.83	1215.08	1217.85	1219.8	1221.19	1220.28	1210.52	1196.98
11	1195.41	1195.85	1207.79	1209.37	1210.96	1207.82	1205.58	1213.01	1217.04	1212.28	1205.74	1200.1	1202.19	1210.77	1213.53	1219.2	1224.16	1219.88	1220.46	1223.66	1226.56	1225.22	1222.95	1210.74	1195.41
12	1196.5	1196.52	1209.55	1212.71	1212.06	1206.9	1204.89	1213.89	1218.63	1215.43	1210.88	1205.73	1207.68	1216.91	1218.08	1224.98	1230.88	1226.57	1228.44	1230.9	1235.02	1231.53	1225.02	1212.66	1196.5
13	1199.8	1199.44	1212.28	1217.69	1214.08	1208.65	1206.21	1216.35	1220.88	1220.43	1218.16	1214.21	1215.47	1224.39	1226.03	1232.77	1238.24	1236.48	1240.03	1240.85	1244.41	1239.61	1229.06	1216.7	1199.8
14	1204.59	1204.36	1216.46	1223	1217.87	1210.95	1209.97	1220.33	1224.87	1227.65	1227.17	1224.09	1223.87	1234.04	1236.16	1242.34	1248.67	1248.86	1253.09	1253.48	1256.34	1250.31	1235.26	1222.16	1204.59
15	1210.39	1210.5	1223.25	1228.47	1223.46	1215.85	1216.01	1226.25	1230.7	1237.08	1237.41	1234.81	1234.82	1243.93	1248.92	1252.58	1260.72	1260.08	1264.94	1265.89	1269.71	1262.08	1243.95	1222.13	1210.39
16	1219.02	1218.1	1231.94	1236.94	1231.03	1221.37	1222.72	1232.52	1237.89	1247.96	1248	1247.41	1247.67	1255.77	1261.79	1265	1271.64	1271.84	1277.6	1278.43	1286.62	1274.42	1253.14	1235.97	1219.02
17	1230.85	1227.75	1241.4	1245.49	1239.3	1229.08	1230.82	1240.1	1247.13	1260.39	1260.04	1261.98	1261.59	1267.87	1275.43	1278.8	1283.21	1285.27	1291.92	1292.47	1303.42	1288.85	1263.82	1246.24	1230.85
18	1244.03	1239.49	1251.78	1255.63	1248.6	1237.91	1241.54	1249.32	1257.19	1273.11	1273.58	1276.43	1276.23	1281.84	1289.87	1293.83	1295.22	1299.61	1308.54	1308.58	1318.33	1304.07	1276.34	1258.55	1244.03
19	1256.88	1252.48	1263.06	1265.58	1259.26	1248.07	1253.02	1259.46	1267.97	1285.97	1288.74	1292.17	1291.97	1296.37	1304.83	1308.54	1309.04	1316.9	1326.9	1326.87	1334.06	1320.18	1292.1	1270.61	1256.88
20	1269	1264.42	1275.51	1276.37	1269.78	1260.73	1266.68	1271.39	1280.79	1299.8	1305.17	1308.99	1309.16	1312	1319.83	1322.27	1324.72	1333.84	1346.08	1347.01	1351.85	1337.16	1310.06	1282.45	1269
21	1282.88	1276.42	1289.44	1286.8	1281.44	1273.43	1279.79	1284.23	1294.7	1313.99	1322.69	1327.35	1327.12	1329.33	1335.75	1335.86	1341.62	1352.19	1363.61	1368.73	1371.13	1352.2	1326.91	1295.66	1282.88
22	1298.99	1290.31	1304.18	1297.35	1295.15	1285.18	1292.72	1297.63	1309.87	1328.85	1340.47	1344.91	1345.19	1347.69	1353.1	1351.05	1360.17	1370.07	1382.52	1389.28	1391.08	1367.8	1342.92	1311.15	1298.99
23	1316.32	1307.34	1317.81	1308.45	1308.85	1298.71	1306.74	1311.97	1327.12	1345.49	1360.73	1363.18	1362.95	1366.71	1371	1368.16	1378.1	1390.31	1405.35	1411.42	1412.5	1384.51	1360.03	1328.21	1316.32
24	1334.61	1326.44	1331.86	1320.34	1322.54	1312.83	1322.22	1326.84	1344.45	1362.19	1379.77	1380.57	1379.94	1385.31	1389.04	1386.03	1397.64	1414.09	1429.73	1435.92	1433.45	1402.54	1379.36	1346.89	1334.61
25	1354.16	1346.58	1347.49	1333.76	1337.74	1329.88	1340.5	1344.22	1362.56	1379.98	1398.71	1397.24	1396.57	1404.16	1407.12	1405.32	1419.3	1438.65	1456.71	1462.28	1453.45	1420.95	1400.82	1366.44	1354.16
26	1375.56	1368.68	1365.32	1349.27	1353.68	1347.46	1359.23	1362.56	1381.12	1399.19	1418.55	1415.25	1415.72	1422.59	1426.13	1424.39	1443.6	1467.04	1485.95	1490.37	1474.62	1440.83	1423.93	1387.34	1375.56
27	1399.78	1391.42	1383.51	1364.69	1371.32	1367.74	1380.13	1382.79	1399.81	1418.79	1437.31	1435.49	1437.06	1443.7	1444.18	1443.74	1468.31	1495.63	1516.44	1519.1	1497.59	1462.44	1448.19	1411.12	1399.78
28	1426.94	1418.66	1403.99	1380.03	1390	1390.82	1404.41	1405.42	1420.63	1440.28	1456.64	1457.8	1460.54	1466.48	1462.87	1463.86	1493.74	1526.31	1549.91	1550.58	1521.78	1486.5	1473.87	1437.67	1426.94
29	1457.13	1448.13	1425.47	1394.91	1410.02	1413.89	1427.49	1428.25	1442.46	1460.87	1477.93	1482.12	1486.29	1490.48	1482.49	1486.48	1521.34	1560.09	1584.98	1583.25	1548.45	1509.09	1498.89	1467.28	1457.13
30	1489.38	1480.97	1448.3	1412.72	1431.72	1441.09	1455.31	1455.45	1465.36	1482.69	1500.81	1508.88	1514.04	1515.3	1505.03	1509.83	1550.58	1594.17	1621.81	1617.56	1574.72	1532.04	1527.25	1498.33	1489.38
31	1526.99	1515.21	1472.99	1433.28	1454.47	1469.91	1483.84	1482.43	1489.93	1501.88	1525.36	1538.24	1543.37	1542.73	1529.51	1533.61	1581.2	1630.56	1659.7	1653.35	1602.96	1555.99	1556.6	1533.48	1526.99
32	1566.11	1552.7	1498.45	1454.73	1478.65	1499.66	1513.73	1510.65	1513.87	1521.29	1551.11	1569.58	1574.56	1572.36	1554.3	1558.39	1613.23	1667.17	1699.54	1689.53	1631.8	1583.4	1588.39	1571.53	1566.11
33	1612.72	1592.54	1528.6	1479.56	1503.35	1534.21	1549.33	1543.35	1541.48	1544.05	1578.86	1602.52	1608.4	1603.62	1579.49	1584.06	1646.78	1707.42	1741.56	1728.94	1661.45	1613.08	1621.92	1615.47	1612.72
34	1659.42	1634.38	1558.99	1504.2	1530.34	1567.58	1582.63	1575.87	1568.43	1569.22	1607.91	1638.12	1643.3	1636.09	1606.03	1610.27	1681.78	1749.3	1784.99	1768.36	1693.73	1644.8	1656.96	1661.81	1659.42
35	1715.07	1679.58	1591.18	1532.08	1560.07	1605.58	1620.02	1612.89	1597.43	1595.09	1638.6	1674.8	1681.35	1671.97	1633.53	1640.03	1717.02	1791.29	1830.8	1810.93	1726.63	1677.62	1695.02	1714.54	1715.07
36	1768.84	1727.35	1624.08	1562.96	1592.26	1645.83	1660.09	1651.08	1628.27	1623.93	1672.52	1716.43	1721.67	1710.47	1663.77	1671.57	1754.26	1837.99	1878.49	1854.24	1761.47	1711.27	1735.68	1769.17	1768.84
37	1826.38	1777.91	1658.63	1593.95	1626.07	1687.37	1702.3	1691.08	1659.22	1652.44	1706.7	1757.44	1764.02	1749.91	1696.79	1705.2	1793.19	1883.64	1927.03	1899.17	1798.62	1748.3	1781.97	1827.2	1826.38
38	1884.28	1831.09	1696.53	1628.31	1661.53	1734.46	1749.85	1734.21	1693.77	1685.04	1745.31	1804.79	1808.07												

Page 13 of 17

Page 14 of 17



161	0	0	0	0	0	0	0	0	0	0	0	0	0	0	0	0	0	0	0	0	0	0	0	0	0
162	0	0	0	0	0	0	0	0	0	0	0	0	0	0	0	0	0	0	0	0	0	0	0	0	0
163	0	0	0	0	0	0	0	0	0	0	0	0	0	0	0	0	0	0	0	0	0	0	0	0	0
164	0	0	0	0	0	0	0	0	0	0	0	0	0	0	0	0	0	0	0	0	0	0	0	0	0
165	0	0	0	0	0	0	0	0	0	0	0	0	0	0	0	0	0	0	0	0	0	0	0	0	0
166	0	0	0	0	0	0	0	0	0	0	0	0	0	0	0	0	0	0	0	0	0	0	0	0	0
167	0	0	0	0	0	0	0	0	0	0	0	0	0	0	0	0	0	0	0	0	0	0	0	0	0
168	0	0	0	0	0	0	0	0	0	0	0	0	0	0	0	0	0	0	0	0	0	0	0	0	0
169	0	0	0	0	0	0	0	0	0	0	0	0	0	0	0	0	0	0	0	0	0	0	0	0	0
170	0	0	0	0	0	0	0	0	0	0	0	0	0	0	0	0	0	0	0	0	0	0	0	0	0
171	0	0	0	0	0	0	0	0	0	0	0	0	0	0	0	0	0	0	0	0	0	0	0	0	0
172	0	0	0	0	0	0	0	0	0	0	0	0	0	0	0	0	0	0	0	0	0	0	0	0	0
173	0	0	0	0	0	0	0	0	0	0	0	0	0	0	0	0	0	0	0	0	0	0	0	0	0
174	0	0	0	0	0	0	0	0	0	0	0	0	0	0	0	0	0	0	0	0	0	0	0	0	0
175	0	0	0	0	0	0	0	0	0	0	0	0	0	0	0	0	0	0	0	0	0	0	0	0	0
176	0	0	0	0	0	0	0	0	0	0	0	0	0	0	0	0	0	0	0	0	0	0	0	0	0
177	0	0	0	0	0	0	0	0	0	0	0	0	0	0	0	0	0	0	0	0	0	0	0	0	0
178	0	0	0	0	0	0	0	0	0	0	0	0	0	0	0	0	0	0	0	0	0	0	0	0	0
179	0	0	0	0	0	0	0	0	0	0	0	0	0	0	0	0	0	0	0	0	0	0	0	0	0
180	0	0	0	0	0	0	0	0	0	0	0	0	0	0	0	0	0	0	0	0	0	0	0	0	0

4.0 LM-79 Measurement and Test Results

4.3 THD and PF Test

Model No.	ALEDM5TN/480	Sample ID.	A1
Temperature (°C)	25.3	Humidity (%RH)	56.0

Test Method

The samples were tested according to the ANSI C82.77:2002.

The total harmonic distortion shall be measured to the 40th order.

The ambient temperature condition was maintained at $25^{\circ}\text{C} \pm 1^{\circ}\text{C}$. The sample measurements were made using a digital power meter and power supply. The sample was operated at rated voltage and was stabilized before measurement. The total harmonic distortion were calculated.

Test Results

Voltage (Vac)	Frequency (Hz)	Current (A)	Power (W)	Power Factor	THD
480.03	60	0.181	74.9	0.863	22.31%

5.0 Equipment Information

Test Equipment			
Equipment ID	Equipment Name	Last Calibration Date	Calibration Due Date
DLF107	Integrating Sphere System	2021/12/26	2022/12/25
DLF108	Auxiliary Lamp	2021/12/26	2022/12/25
DLF122	Measurement Standard Lamp Standard Lamp Type: 220 V, 0.4720 A, Tungsten, Omni-derectional	2021/12/26	2022/12/25
DLF116	AC Power Source	2021/12/26	2022/12/25
DLF113	Power Meter	2021/12/26	2022/12/25
DLF112	Temperature Recorder	2021/12/26	2022/12/25
DLF114	Temperature & Humidity Datalogger	2021/12/26	2022/12/25
DLF101	Goniophotometer	2021/12/26	2022/12/25
DLF125	Standard Lamp Standard Lamp Type: 76.58 V, 6.7875 A, Tungsten, Omni-derectional	2021/12/26	2022/12/25
DLF104	AC Power Source	2021/12/26	2022/12/25
DLF507	DC Power Source	2021/12/26	2022/12/25
DLF102	Power Meter	2021/12/26	2022/12/25
DLF111	Temperature & Humidity Datalogger	2021/12/26	2022/12/25
DLF119	Power Meter	2021/12/26	2022/12/25
DLF031	Temperature data logger	2021/12/26	2022/12/25
DLF022	Digital power meter	2021/12/26	2022/12/25
DLF003	Temperature & Humidity Datalogger	2021/12/26	2022/12/25

***** End of Test Report*****