

Photometric Test Report

Relevant Standards

- ☒ IES LM-79-2008
- ☒ ANSI C82.77:2017

Prepared For

RAB Lighting Inc.

Room 6A33, No.1388, Wuzhong road, Shanghai, China

Xiao Xiang, 15921313292, Gary.Xiao@rabweb.com

Prepared By

Deliver Co., Ltd.

Block 11, 78 Keling Road, SSTP, Suzhou, China

0512-66801950, kevin.jia@szdeliver.com

Project Number

DLF2201106

Report Number

DLF2201106-2a

Test Date

2022/1/12

Issue Date

2022/1/13

Prepared By



Wangzun Zhu

Approved By



Kevin Jia

The results contained in this report pertain only to the tested sample.

This report shall not be reproduced, except in full, without written approval of Deliver Co., Ltd.

This report must not be used by the client to claim product certification, approval, or endorsement by NVLAP.

1.0 Test Summary

DLC Technical Requirements v5.1

Outdoor - Pole/Arm-Mounted Area and Roadway Luminaires				
Requirement Category	Test Method	Requirements		Test value
Luminaire Output (lm) (Goniophotometer - Section 4.2)	IES LM-79-2008	1000		14099
Minimum Luminaire Efficacy (lm/W) (Goniophotometer - Section 4.2)	IES LM-79-2008	Standard 105	Premium 120	155.3
Power (Input Wattage) (W) (Goniophotometer - Section 4.2)	IES LM-79-2008	Worst Case		90.8
Total Harmonic Distortion (A%) (THD & PF - section 4.3)	ANSI C82.77:2014	20.00%		17.09%
Power Factor (THD & PF - section 4.3)	ANSI C82.77:2014	0.9		0.897
Allowable CCTs* (K) (Integrating Sphere - Section 4.1)	IES LM-79-2008	7 step	3985±275	3889
		4 step	3985±154	
Minimum CRI (Integrating Sphere - Section 4.1)	IES LM-79-2008 CIE 13.3-1995	≥70		84
Minimum R9 (Integrating Sphere - Section 4.1)	IES LM-79-2008 CIE 13.3-1995	≥-40		11
Minimum Rf (Integrating Sphere - Section 4.1)	ANSI/IES TM-30-18	≥70		85
Minimum Rg (Integrating Sphere - Section 4.1)	ANSI/IES TM-30-18	≥89		96
IES Rcs,h1 (Integrating Sphere - Section 4.1)	ANSI/IES TM-30-18	-18%≤IES Rcs,h1≤+23%		-12%
Zonal Lumen Requirement (0°-90°) (Goniophotometer - Section 4.2)	IES LM-79-2008	100%		100.00%
Zonal Lumen Requirement (80°-90°) (Goniophotometer - Section 4.2)	IES LM-79-2008	≤10%		0.51%
Input Voltage (V) (Goniophotometer - Section 4.2)	IES LM-79-2008	Worst Case		480
Input Current (A) (Goniophotometer - Section 4.2)	IES LM-79-2008	Worst Case		0.212

2.0 Test List

Test Item	Test	Test Date	Model Number	Sample No.
1	Integrating Sphere Test	2022/1/12	ALEDM5TN/480	B1
2	Goniophotometer Test	2022/1/12	ALEDM5TN/480	B1
3	THD and PF Test	2022/1/12	ALEDM5TN/480	B1

Remark(If any)

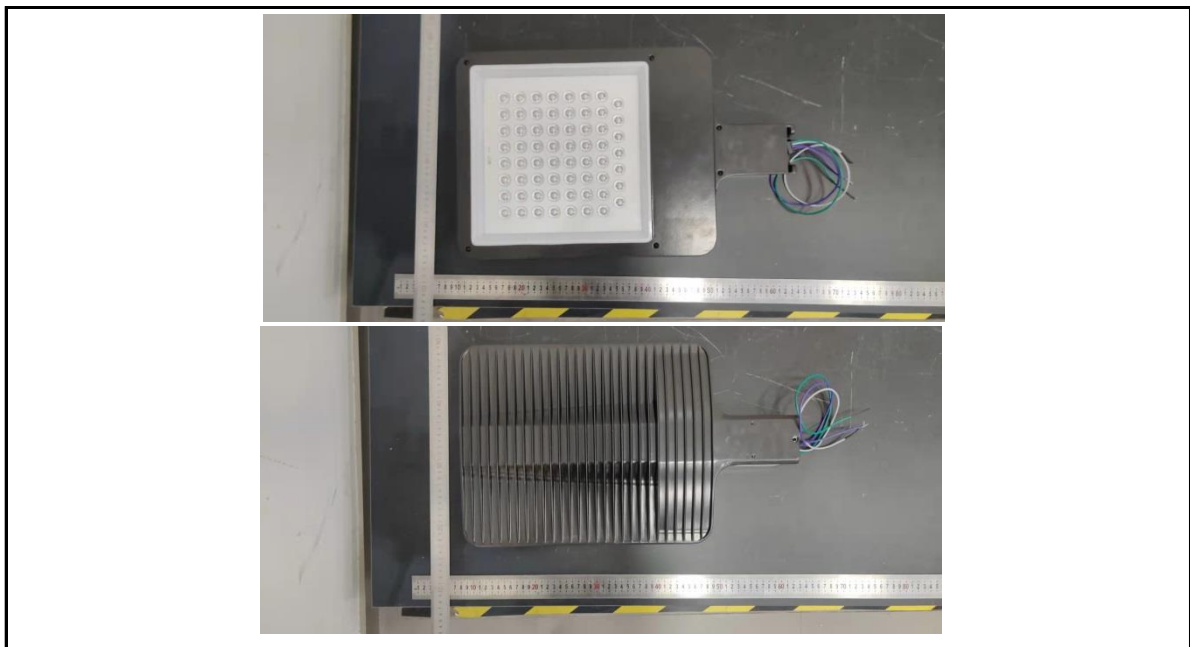
- 1、 This report shall not be used by the client to claim product endorsement by NVLAP, NIST or any agency of the US government.
- 2、 The results reported herein have been performed in accordance with the laboratory's terms of accreditation. This report shall not be reproduced except in full without the written approval of the Laboratory. The results in this report apply to the test sample(s) mentioned above at the time of the testing period only and are not to be used to indicate applicability to other similar products. This report does not imply that the product(s) has met the criteria for certification.

3.0 Production Description

Luminaire Description: 90W/12,000 lm @ 4000K

Electrical Specification: 480V,50/60HZ

Photos of Luminaire Characteristics



4.0 LM-79 Measurement and Test Results

4.1 Integrating Sphere Test

Model No.	ALEDM5TN/480	Sample ID.	B1
Operate time (Min.)	90	Stabilization time (Min.)	45
Temperature (°C)	25.3	Humidity (%RH)	56.0

Test Method

The samples were tested according to the IES LM-79-2008.

Photometric parameters were measured using an integrating sphere, a spectroradiometer and software. The ambient temperature condition inside the sphere was maintained at $25^{\circ}\text{C} \pm 1^{\circ}\text{C}$.

The sample measurements were made using a spectroradiometer connected by a fiber optic cable and detector through the detector port of the integrating sphere.

The voltage of an AC power supply (RMS voltage) or DC power supply (instantaneous voltage) applied to the device under test shall be regulated to within ± 0.2 percent under load.

The sample was measured using 4π geometry and operated at rated voltage and was stabilized before measurement. Chromaticity coordinates, correlated color temperature and color rendering index were calculated from the spectral radiant flux measurements taken at 1 nm intervals over the range of 380 to 780 nm.

Test Result

Voltage (Vac)	Frequency (Hz)	Current (A)	Power (W)	Power Factor
480.03	60	0.210	90.4	0.897

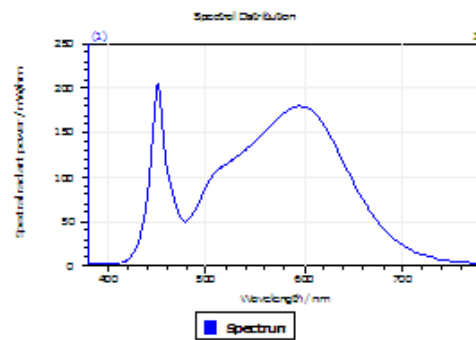
Test Result

CCT (K)	CRI	R9	Duv
3889	84	11	0.00014

Rf	Rg	IES Rcs,h1
85	96	-12%

4.1 Integrating Sphere Test

Results



Spectral values

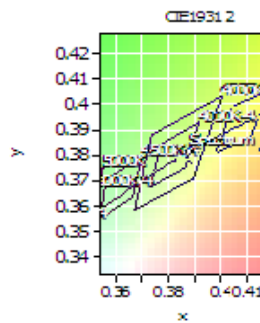
DominantWavelength	579.41 nm
Purity	0.298
PeakWavelength	450.92 nm
Radiant Power	31.17 W
Width50%	18.56 nm

Color Coordinates

Correlated Color Temperat 3889 K

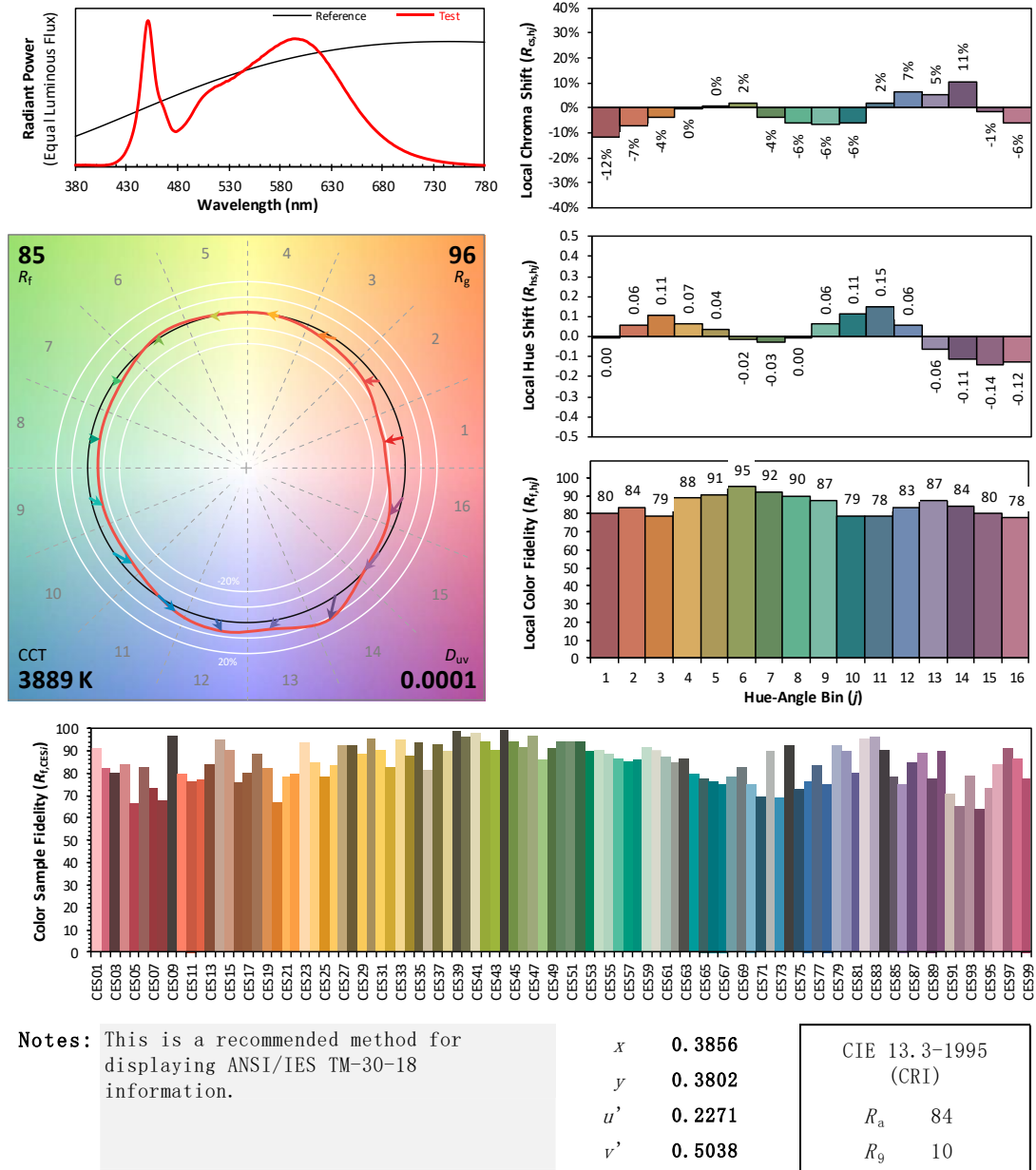
x: 0.3856 u: 0.2271 u': 0.2271
y: 0.3802 v: 0.3359 v': 0.5038

ResultsCRICRI01	81.8	ResultsCRICRI09	10.9
ResultsCRICRI02	89.8	ResultsCRICRI10	76.1
ResultsCRICRI03	95.5	ResultsCRICRI11	81.8
ResultsCRICRI04	82.6	ResultsCRICRI12	63.8
ResultsCRICRI05	82.3	ResultsCRICRI13	83.7
ResultsCRICRI06	86.2	ResultsCRICRI14	97.7
ResultsCRICRI07	86.0	ResultsCRICRI15	75.6
ResultsCRICRI08	64.9	ResultsCRICRI16	73.3
ResultsCRI	83.6		



PlanckDistance 1.4E-004

4.1 Integrating Sphere Test



Colors are for visual orientation purposes only. Created with the ANSI/IES TM-30-18 Calculator Version 2.0

4.0 LM-79 Measurement and Test Results

4.2 Goniophotometer Test

Model No.	ALEDM5TN/480	Sample ID.	B1
Opreate time (Min.)	90	Stabilization time (Min.)	45
Temperature (°C)	25.3	Humidity (%RH)	54.0

Test Method

The samples were tested according to the IES LM-79-2008.

Photometric paramters were measured using a type C goniophotometer and software.

The ambient temperature shall be maintained at $25^{\circ}\text{C} \pm 1^{\circ}\text{C}$, measured at a point not more than 1 m from the sample and at the same height as the sample.

The voltage of an AC power supply (RMS voltage) or DC power supply (instantaneous voltage) applied to the device under test shall be regulated to within ± 0.2 percent under load.

The samples were operated at rated voltage and was stabilized before measurement. Luminous flux, luminaire efficacy, zonal lumen were calculated from the software taken at 0.5° vertical intervals and 10° horizontal intervals.

Test Conditions

Condition	Voltage (Vac)	Frequency (Hz)	Current (A)	Power (W)	Power Factor
WORST CASE	480.01	60	0.212	90.8	0.893

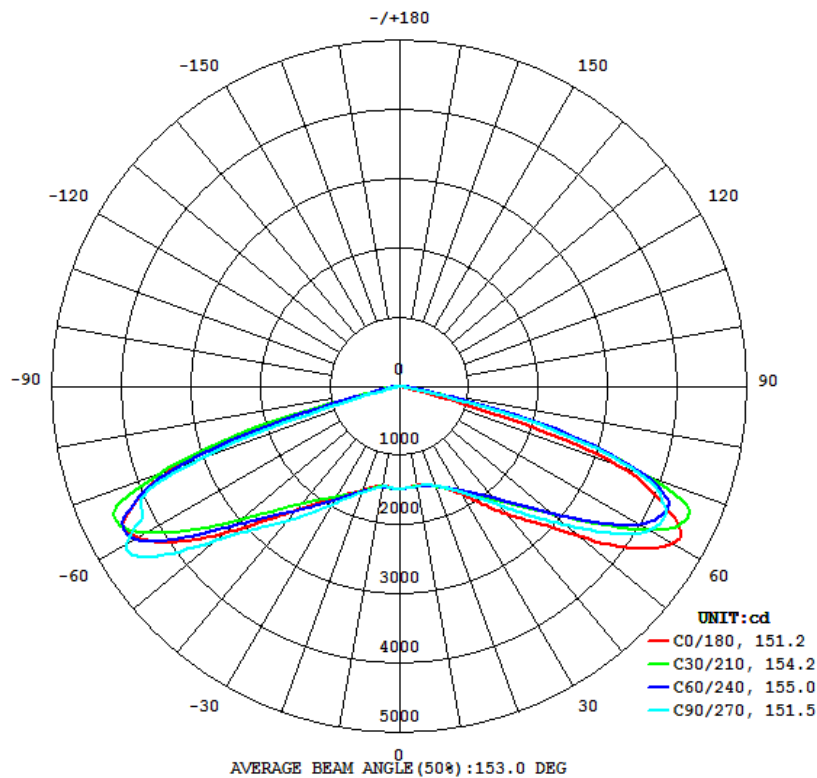
Test Result

Flux (lm)	Field Angle(10%)		Beam Angle(50%)		Luminous Efficacy (lm/W)
	C0-180	C90-270	C0-180	C90-270	
14099	158.8	158.6	151.2	151.5	155.3

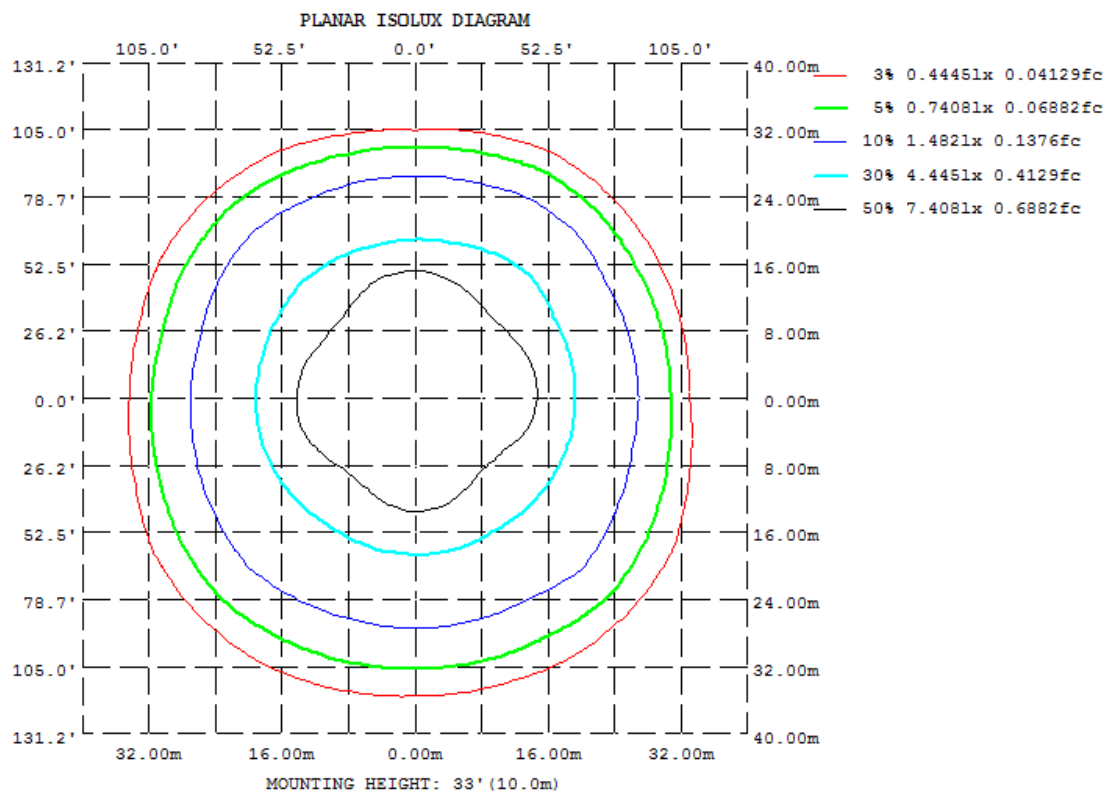
Zonal Lumen Requirement (0° - 90°)	Zonal Lumen Requirement (80° - 90°)	BUG rating
100.00%	0.51%	B4-U0-G2

4.2 Goniophotometer Test

Light Distrubtion Curve



Isolux Plot



4.2 Goniophotometer Test

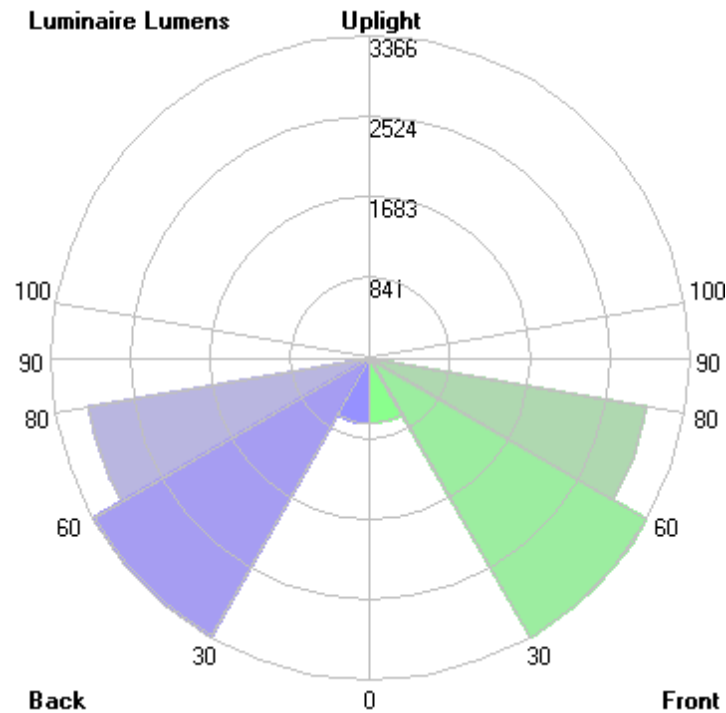
Zonal Lumen Summary

γ	C0	C45	C90	C135	C180	C225	C270	C315
10	1455	1471	1468	1476	1462	1483	1478	1485
20	1539	1552	1540	1583	1600	1616	1640	1623
30	1803	1716	1766	1810	1852	1850	1974	1861
40	2419	2063	2247	2143	2335	2227	2533	2267
50	3364	2747	3115	2799	3299	2968	3461	3011
60	4531	4002	4154	3992	4361	4320	4530	4611
70	3357	4285	3667	4163	3466	3905	3019	3793
80	106.3	432.8	174.0	485.2	160.8	220.1	89.57	141.0
90	0	0	0	0	0	0	0	0
100	0	0	0	0	0	0	0	0
110	0	0	0	0	0	0	0	0
120	0	0	0	0	0	0	0	0
130	0	0	0	0	0	0	0	0
140	0	0	0	0	0	0	0	0
150	0	0	0	0	0	0	0	0
160	0	0	0	0	0	0	0	0
170	0	0	0	0	0	0	0	0
180	0	0	0	0	0	0	0	0
DEG	LUMINOUS INTENSITY:cd							

	Zonal (lm)		Total (lm)	Percent
0-10	141.00	0 - 10	141.00	1.00%
10-20	431.18	0 - 20	572.18	4.06%
20-30	788.65	0 - 30	1360.83	9.65%
30-40	1287.26	0 - 40	2648.09	18.78%
40-50	2061.12	0 - 50	4709.21	33.40%
50-60	3357.61	0 - 60	8066.82	57.22%
60-70	4210.20	0 - 70	12277.02	87.08%
70-80	1749.42	0 - 80	14026.44	99.49%
80-90	72.07	0 - 90	14098.51	100.00%
90-100	0.00	0 - 100	14098.51	100.00%
100-110	0.00	0 - 110	14098.51	100.00%
110-120	0.00	0 - 120	14098.51	100.00%
120-130	0.00	0 - 130	14098.51	100.00%
130-140	0.00	0 - 140	14098.51	100.00%
140-150	0.00	0 - 150	14098.51	100.00%
150-160	0.00	0 - 160	14098.51	100.00%
160-170	0.00	0 - 170	14098.51	100.00%
170-180	0.00	0 - 180	14098.51	100.00%

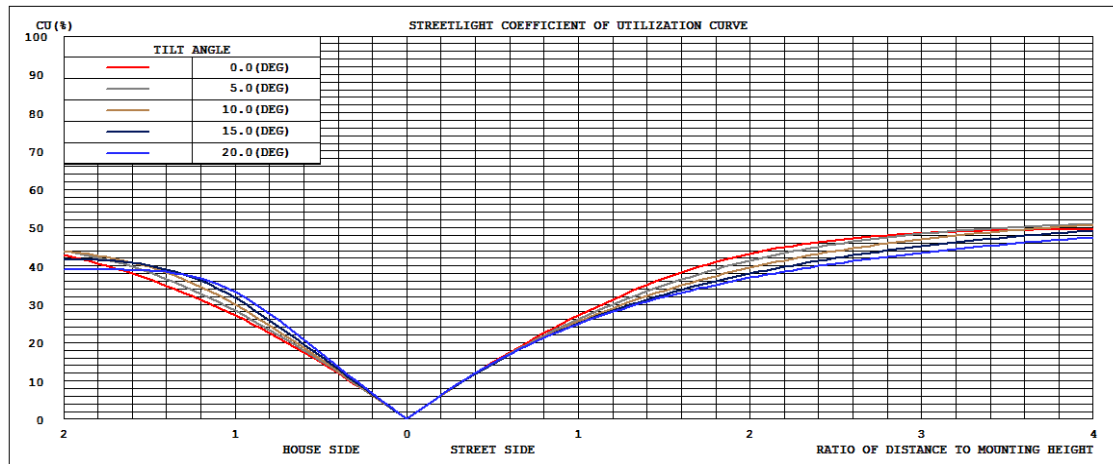
4.2 Goniophotometer Test

LCS/BUG

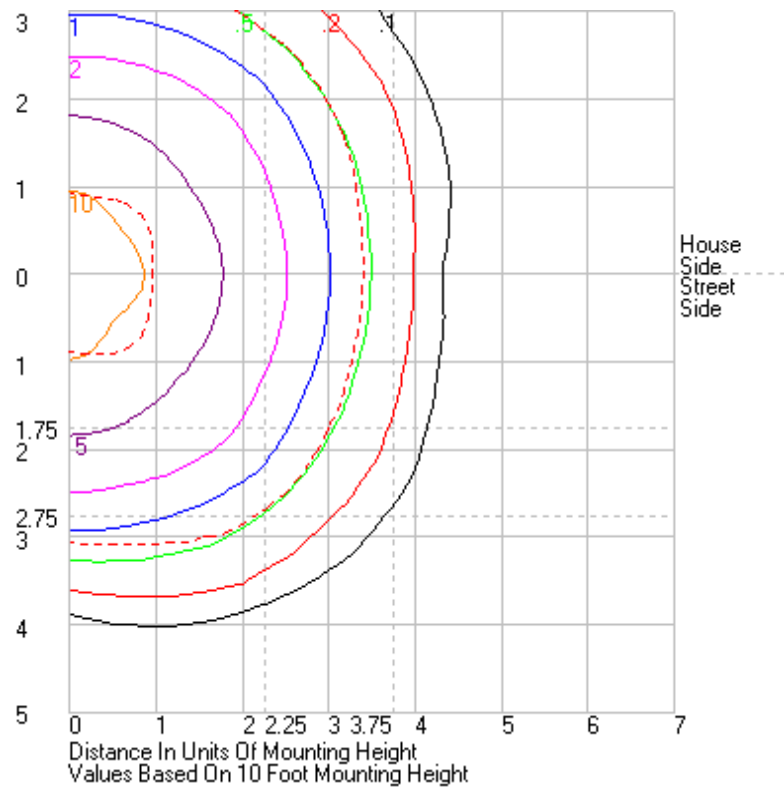


	Lumens	% Lamp	% Luminaire
FL - Front-Low (0-30)	676.2	N.A.	4.8
FM - Front-Medium (30-60)	3365.7	N.A.	23.9
FH - Front-High (60-80)	2955.6	N.A.	21.0
FVH - Front-Very High (80-90)	29.4	N.A.	0.2
BL - Back-Low (0-30)	684.6	N.A.	4.9
BM - Back-Medium (30-60)	3340.3	N.A.	23.7
BH - Back-High (60-80)	3004.1	N.A.	21.3
BVH - Back-Very High (80-90)	42.7	N.A.	0.3
UL - Uplight-Low (90-100)	0.0	N.A.	0.0
UH - Uplight-High (100-180)	0.0	N.A.	0.0
Total	14098.6	N.A.	100.0
BUG Rating	B4-U0-G2		

Coefficients of Utilization



Isolines



4.2 Goniophotometer Test

	0	15	30	45	60	75	90	105	120	135	150	165	180	195	210	225	240	255	270	285	300	315	330	345	360
0	1484.02	1484.02	1484.02	1484.02	1484.02	1484.02	1484.02	1484.02	1484.02	1484.02	1484.02	1484.02	1484.02	1484.02	1484.02	1484.02	1484.02	1484.02	1484.02	1484.02	1484.02	1484.02	1484.02	1484.02	1484.02
1	1480.7	1481.39	1481.62	1482.14	1482.12	1482.31	1483.21	1483.66	1484.97	1486.94	1488.26	1489.64	1484.08	1485.23	1486.11	1486.42	1485.92	1485.47	1485.7	1485.46	1484.54	1484.79	1485.25	1486.17	1480.7
2	1482.28	1483.18	1483.13	1482.47	1480.47	1480.49	1481.85	1483.86	1484.76	1486.57	1488.38	1490.2	1486.08	1487.24	1488.82	1489.29	1488.39	1487.26	1487.02	1486.34	1485.67	1487.33	1488.37	1488.3	1482.28
3	1480.07	1480.07	1480.76	1482.54	1480.9	1479.58	1480.92	1483.4	1484.33	1486.12	1487.28	1488.84	1484.25	1486.54	1488.12	1489.04	1489.03	1487.43	1486.52	1486.11	1487.7	1488.37	1487.24	1486.79	1480.07
4	1476.66	1476.42	1477.82	1480.51	1482.26	1479.79	1481.14	1484.07	1483.86	1483.42	1484.15	1486.82	1482.91	1485.21	1486.11	1488.56	1487.45	1485.16	1484.02	1484.91	1487	1488.13	1486.98	1484.04	1476.66
5	1472.6	1472.64	1475.09	1478.45	1482.73	1480.92	1482.05	1484.08	1483.62	1482.06	1481.25	1481.19	1479.44	1483.94	1486.34	1486.07	1483.75	1480.42	1479.18	1481.05	1485.35	1486.98	1484.93	1481.49	1472.6
6	1466.93	1467.16	1471.71	1477.32	1482.28	1480.27	1480.28	1482.78	1483.61	1481.37	1476.65	1475.32	1473.61	1479.03	1484.94	1483.83	1480.17	1476.15	1474.25	1477.31	1481.79	1484.94	1482.69	1477.45	1466.93
7	1462.53	1462.27	1467.52	1476.64	1479.83	1478.49	1478.07	1481.43	1483.18	1479.58	1471.57	1468.75	1468.17	1474.58	1482.16	1482.73	1477.76	1472.99	1470.95	1474.36	1479.11	1482	1480.7	1474.97	1462.53
8	1459.26	1458.65	1465.58	1474.43	1477.77	1475.54	1473.79	1479.18	1482.09	1477.32	1467.38	1463.62	1464.39	1472.11	1478.66	1482.05	1477.1	1472.37	1470.1	1473.47	1477.76	1480.48	1480.24	1472.79	1459.26
9	1457.27	1457.26	1465.35	1471.95	1474.65	1472.87	1470.85	1476.92	1480.26	1475.77	1465.38	1460.39	1461.95	1471.25	1477.31	1482.28	1479.45	1474.28	1472.13	1475.08	1478.3	1481.66	1480.97	1472.8	1457.27
10	1455.03	1456.33	1467.35	1471.22	1473.72	1470.12	1467.61	1475.97	1479.14	1475.52	1465.79	1460.59	1462.22	1472.62	1477.54	1483.5	1484.69	1479.17	1477.55	1480.51	1482.14	1484.56	1484.15	1473.01	1455.03
11	1453.39	1454.98	1470.25	1471.88	1473.25	1468.31	1465.36	1475.3	1480.22	1476.63	1469.58	1462.64	1465.98	1476.82	1480.56	1487.95	1492.03	1486.15	1485.18	1488.39	1489.81	1489.08	1487.25	1473.06	1453.39
12	1454.26	1455.62	1472.54	1475.15	1474.58	1467.61	1465.12	1476.38	1481.8	1480.01	1476.03	1471.67	1472.64	1484.2	1486.08	1494.58	1500.42	1494.18	1495.1	1496.7	1500.12	1496.3	1489.53	1475.08	1454.26
13	1458.06	1458.45	1475.37	1480.91	1476.81	1468.91	1466.83	1479.25	1484.45	1486.17	1485.01	1481.9	1482.07	1493.97	1495.43	1503.98	1509.61	1505.51	1508.1	1508.5	1511.24	1505.35	1494.3	1479.29	1458.06
14	1463.51	1464.51	1479.98	1487.08	1481.31	1472.51	1471.55	1484.46	1489.45	1494.77	1496.03	1494.44	1493.6	1505.52	1507.68	1515.99	1521.64	1520.7	1524.35	1523.68	1526.02	1518.21	1501.15	1485.8	1463.51
15	1470.64	1471.33	1487.74	1494.34	1487.64	1478.41	1478.61	1491.52	1496.33	1505.25	1508.85	1507.9	1506.53	1518.59	1522.87	1529.4	1536.3	1535.64	1539.92	1542.68	1532.85	1511.09	1492.95	1470.64	
16	1480.42	1479.78	1497.31	1503.46	1496.34	1485.49	1487.07	1499.1	1505.83	1518.7	1522.33	1523.44	1522.75	1532.63	1539.67	1544.32	1551.3	1550.69	1556.11	1556.14	1563.16	1548.71	1522.7	1501.93	1480.42
17	1494.4	1491.29	1508.7	1513.98	1506.02	1494.23	1496.63	1508.45	1517.56	1534	1536.95	1541.69	1540.18	1549.16	1556.55	1561.43	1565.96	1566.7	1573.37	1572.69	1583.67	1565.6	1535.11	1513.64	1494.4
18	1509.08	1504.45	1521.02	1526.47	1517.54	1504.58	1509.35	1520.06	1530.34	1550.52	1554.03	1559.98	1558.82	1565.2	1574.49	1580.1	1581	1584.78	1593.59	1592.03	1602.55	1583.4	1549.57	1528.33	1509.08
19	1524.65	1519.43	1533.74	1538.98	1529.97	1516.85	1523.3	1532.1	1543.77	1566.51	1572.73	1579.56	1578.66	1584.14	1593.43	1598.33	1598	1605.28	1615.74	1614.18	1620.92	1603.5	1568.54	1543.29	1524.65
20	1539.17	1534.32	1549.57	1551.82	1543.02	1531.61	1539.97	1546.75	1559.46	1583.42	1592.49	1600.64	1599.92	1603.3	1612.21	1616.18	1616.95	1626.83	1639.54	1638.45	1642.7	1623.33	1589.05	1557.26	1539.17
21	1555.4	1548.55	1565.82	1564.54	1557.32	1548	1556.33	1563	1575.94	1601.44	1613.8	1622.69	1621.75	1624.65	1632.24	1633.02	1637.46	1649.19	1662.08	1665.15	1665.93	1642.5	1610.18	1572.45	1555.4
22	1574.82	1564.82	1584.3	1576.93	1572.88	1562.61	1571.43	1579.28	1594.05	1619.5	1635.92	1645.41	1644.31	1647.24	1652.8	1651.67	1660.29	1671.55	1685.18	1691.48	1690.35	1662.1	1628.98	1590.73	1574.82
23	1595.31	1585.82	1600.49	1590.24	1590.22	1578.57	1589.2	1596.2	1615.5	1640.01	1660.79	1667.79	1666.51	1671.04	1675.36	1673.22	1683.98	1696.28	1712.46	1718.16	1716.67	1682.1	1650.05	1611.68	1595.31
24	1617.62	1608.19	1616.5	1604.18	1607.2	1595.71	1608.12	1614.35	1636.94	1661.27	1685.29	1690.09	1688.76	1694.49	1698.36	1695.49	1706.77	1725.57	1742.12	1747.18	1742	1703.94	1673.06	1633.61	1617.62
25	1640.48	1631.5	1635.68	1619.8	1624.61	1614.91	1628.6	1634.1	1659.19	1683.21	1709.48	1711.67	1709.25	1718.61	1721.25	1719.29	1732.8	1755.67	1747.15	1779.56	1767.08	1726.54	1698.89	1657.31	1640.48
26	1666.14	1658.06	1655.86	1638.85	1644.3	1637.35	1652.51	1657.74	1681.77	1706.77	1733.68	1733.01	1732.23	1741.24	1744.56	1742.9	1762.89	1789.66	1809.75	1813.91	1792.67	1750.14	1725.78	1682.79	1666.14
27	1695	1685.52	1678.95	1657.01	1664.56	1660.83	1676.89	1681.32	1704.46	1730.91	1756.82	1757.31	1757.43	1766.63	1767.58	1767.51	1793.19	1824.67	1846.16	1848.74	1821.05	1775.98	1755.28	1710.06	1695
28	1727.49	1718.01	1703.2	1676.26	1688.19	1688.83	1706.82	1709.84	1729.49	1757.47	1781.34	1784.99	1787.46	1794.06	1791.26	1792.95	1825.45	1862.52	1887.41	1886.88	1849.63	1804.51	1785.31	1741.87	1727.49
29	1762.95	1752.8	1728.34	1694.5	1711.8	1717.89	1734.21	1737	1755.37	1783.31	1807.64	1814.59	1818.2	1823.94	1815.76	1819.85	1858.34	1902.75	1929.84	1926.32	1881.41	1833.7	1817.44	1776.74	1762.95
30	1802.75	1792.04	1756.68	1715.51	1737.85	1748.73	1766.48	1768.86	1784.09	1809.63	1835.93	1847.4	1852.03	1854.18	1843.25	1849.68	1894.57	1944.74	1974.24	1967.56	1913.9	1860.56	1850.26	1815.05	1802.75
31	1846.51	1833.99	1785	1739.22	1766.33	1784.72	1802.57	1802.81	1813.97	1834.99	1865.4	1884.22	1888.18	1887.68	1872.98	1878.44	1931.4	1987.79	2021.1	2010.93	1947.59	1889.49	1885.91	1856.17	1846.51
32	1894.5	1877.59	1817.81	1765.1	1793.75	1820.28	1838.49	1837.34	1843.15	1857.95	1896.9	1922.21	1926.8	1924.58	1903.49	1908.59	1970.59	2033.59	2069.34	2055.75	1982.38	1922.21	1924.53	1902.36	1894.5
33	1948.89	1926.92	1852.37	1794.84	1826.04	1860.99	1880.83	1875.68	1876.77	1885.97	1930.7	1962.72	1967	1962.24	1935.82	1941.44	2011.82	2082.12	2121.14	2103.15	2018.37	1958.13	1964.18	1954.15	1948.89
34	2005.78	1976.05	1887.8	1825.75	1856.77	1902.55	1921.33	1915.23	1909.69	1915.64	1966.86	2005.64	2010.8	2002.92	1966.72	1972.55	2054.64	2132.65	2123.81	2151.19	2057.05	1995.44	2006.87	2009.44	2005.78
35	2069.9	2031.31	1927.73	1858.01	1892.78	1946.69	1966.27	1958.88	1944.65	1947.56	2003.81	2050.91	2057.28	2046.33	2001.18	2009.02	2098.4	2185.09	2229.42	2202.39	2097.48	2035.28	2052.48	2071.14	2069.9
36	2137.12	2088.24	1965.13	1895.38	1932.05	1996.99	2015.99	2006.55	1982.98	1981.9	2045.89	2101.48	2107.46	2093.7	2038.16	2047.26	2143.39	2240.67	2287.62	2255.62	2139.91	2076.27	2102.25	2137.9	2137.12
37	2204.96	2149.21	2009.13	1932.01	1971.35	2047.26	2065.25	2053.54	2020.15	2017.42	2088.65	2153.75	2159.01	2142.69	2077.79	2087.91	2191.37	2297.6	2346.69	2310.17	2185.13	2119.74	2156.93	2206.88	2204.96
38	2276.71	2212.64	2053.7	1974.35	2015.74	2103.57	2123.55	2106.51	2062.4	2056.69	2136.18	2209.87	2213.72	2195.26	2120.69	2131.47	2241.17	2356.6							

Page 13 of 17

Page 14 of 17

161	0	0	0	0	0	0	0	0	0	0	0	0	0	0	0	0	0	0	0	0	0	0	0	0	0
162	0	0	0	0	0	0	0	0	0	0	0	0	0	0	0	0	0	0	0	0	0	0	0	0	0
163	0	0	0	0	0	0	0	0	0	0	0	0	0	0	0	0	0	0	0	0	0	0	0	0	0
164	0	0	0	0	0	0	0	0	0	0	0	0	0	0	0	0	0	0	0	0	0	0	0	0	0
165	0	0	0	0	0	0	0	0	0	0	0	0	0	0	0	0	0	0	0	0	0	0	0	0	0
166	0	0	0	0	0	0	0	0	0	0	0	0	0	0	0	0	0	0	0	0	0	0	0	0	0
167	0	0	0	0	0	0	0	0	0	0	0	0	0	0	0	0	0	0	0	0	0	0	0	0	0
168	0	0	0	0	0	0	0	0	0	0	0	0	0	0	0	0	0	0	0	0	0	0	0	0	0
169	0	0	0	0	0	0	0	0	0	0	0	0	0	0	0	0	0	0	0	0	0	0	0	0	0
170	0	0	0	0	0	0	0	0	0	0	0	0	0	0	0	0	0	0	0	0	0	0	0	0	0
171	0	0	0	0	0	0	0	0	0	0	0	0	0	0	0	0	0	0	0	0	0	0	0	0	0
172	0	0	0	0	0	0	0	0	0	0	0	0	0	0	0	0	0	0	0	0	0	0	0	0	0
173	0	0	0	0	0	0	0	0	0	0	0	0	0	0	0	0	0	0	0	0	0	0	0	0	0
174	0	0	0	0	0	0	0	0	0	0	0	0	0	0	0	0	0	0	0	0	0	0	0	0	0
175	0	0	0	0	0	0	0	0	0	0	0	0	0	0	0	0	0	0	0	0	0	0	0	0	0
176	0	0	0	0	0	0	0	0	0	0	0	0	0	0	0	0	0	0	0	0	0	0	0	0	0
177	0	0	0	0	0	0	0	0	0	0	0	0	0	0	0	0	0	0	0	0	0	0	0	0	0
178	0	0	0	0	0	0	0	0	0	0	0	0	0	0	0	0	0	0	0	0	0	0	0	0	0
179	0	0	0	0	0	0	0	0	0	0	0	0	0	0	0	0	0	0	0	0	0	0	0	0	0
180	0	0	0	0	0	0	0	0	0	0	0	0	0	0	0	0	0	0	0	0	0	0	0	0	0

4.0 LM-79 Measurement and Test Results

4.3 THD and PF Test

Model No.	ALEDM5TN/480	Sample ID.	B1
Temperature (°C)	25.3	Humidity (%RH)	56.0

Test Method

The samples were tested according to the ANSI C82.77:2002.

The total harmonic distortion shall be measured to the 40th order.

The ambient temperature condition was maintained at $25^{\circ}\text{C} \pm 1^{\circ}\text{C}$. The sample measurements were made using a digital power meter and power supply. The sample was operated at rated voltage and was stabilized before measurement. The total harmonic distortion were calculated.

Test Results

Voltage (Vac)	Frequency (Hz)	Current (A)	Power (W)	Power Factor	THD
480.03	60	0.210	90.4	0.897	17.09%

5.0 Equipment Information

Test Equipment			
Equipment ID	Equipment Name	Last Calibration Date	Calibration Due Date
DLF107	Integrating Sphere System	2021/12/26	2022/12/25
DLF108	Auxiliary Lamp	2021/12/26	2022/12/25
DLF122	Measurement Standard Lamp Standard Lamp Type: 220 V, 0.4720 A, Tungsten, Omni-derectional	2021/12/26	2022/12/25
DLF116	AC Power Source	2021/12/26	2022/12/25
DLF113	Power Meter	2021/12/26	2022/12/25
DLF112	Temperature Recorder	2021/12/26	2022/12/25
DLF114	Temperature & Humidity Datalogger	2021/12/26	2022/12/25
DLF101	Goniophotometer	2021/12/26	2022/12/25
DLF125	Standard Lamp Standard Lamp Type: 76.58 V, 6.7875 A, Tungsten, Omni-derectional	2021/12/26	2022/12/25
DLF104	AC Power Source	2021/12/26	2022/12/25
DLF507	DC Power Source	2021/12/26	2022/12/25
DLF102	Power Meter	2021/12/26	2022/12/25
DLF111	Temperature & Humidity Datalogger	2021/12/26	2022/12/25
DLF119	Power Meter	2021/12/26	2022/12/25
DLF031	Temperature data logger	2021/12/26	2022/12/25
DLF022	Digital power meter	2021/12/26	2022/12/25
DLF003	Temperature & Humidity Datalogger	2021/12/26	2022/12/25

***** End of Test Report*****