

# Photometric Test Report

## Relevant Standards

- ☒ IES LM-79-2008
- ☒ ANSI C82.77:2017

## Prepared For

**RAB Lighting Inc.**

Room 6A33, No.1388, Wuzhong road, Shanghai, China

Xiao Xiang, 15921313292, Gary.Xiao@rabweb.com

## Prepared By

**Deliver Co., Ltd.**

Block 11, 78 Keling Road, SSTP, Suzhou, China

0512-66801950, kevin.jia@szdeliver.com

## Project Number

**DLF2301106**

## Report Number

**DLF2301106-4a**

## Test Date

**2023/1/10**

## Issue Date

**2023/1/14**

## Prepared By



Wangzun Zhu

## Approved By



Kevin Jia

The results contained in this report pertain only to the tested sample.

This report shall not be reproduced, except in full, without written approval of Deliver Co., Ltd.

This report must not be used by the client to claim product certification, approval, or endorsement by NVLAP.

## 1.0 Test Summary

DLC Technical Requirements v5.1

Outdoor - Pole/Arm-Mounted Area and Roadway Luminaires				
Requirement Category	Test Method	Requirements		Test value
Luminaire Output (lm) (Goniophotometer - Section 4.2)	IES LM-79-2008	1000		5918
Minimum Luminaire Efficacy (lm/W) (Goniophotometer - Section 4.2)	IES LM-79-2008	Standard 105	Premium 120	146.1
Power (Input Wattage) (W) (Goniophotometer - Section 4.2)	IES LM-79-2008	Worst Case		40.5
Total Harmonic Distortion (A%) (THD & PF - section 4.3)	ANSI C82.77:2014	20.00%	120V	5.21%
		20.00%	277V	10.32%
Power Factor (THD & PF - section 4.3)	ANSI C82.77:2014	0.9	120V	0.995
		0.9	277V	0.870
Allowable CCTs* (K) (Integrating Sphere - Section 4.1)	IES LM-79-2008	7 step	3045±175	2879
		4 step	3045±100	
Minimum CRI (Integrating Sphere - Section 4.1)	IES LM-79-2008 CIE 13.3-1995	≥70		83
Minimum R9 (Integrating Sphere - Section 4.1)	IES LM-79-2008 CIE 13.3-1995	≥-40		7
Minimum Rf (Integrating Sphere - Section 4.1)	ANSI/IES TM-30-18	≥70		84
Minimum Rg (Integrating Sphere - Section 4.1)	ANSI/IES TM-30-18	≥89		94
Minimum IES Rcs,h1 (Integrating Sphere - Section 4.1)	ANSI/IES TM-30-18	-18%≤IES Rcs,h1≤+23%		-12%
Zonal Lumen Requirement (0°-90°) (Goniophotometer - Section 4.2)	IES LM-79-2008	100%		100.00%
Zonal Lumen Requirement (80°-90°) (Goniophotometer - Section 4.2)	IES LM-79-2008	≤10%		0.42%
Input Voltage (V)				
(Goniophotometer - Section 4.2)	IES LM-79-2008	Worst Case		120
(Goniophotometer - Section 4.2)		Non-Worst Case		277
Input Current (A)				
(Goniophotometer - Section 4.2)	IES LM-79-2008	Worst Case		0.339
(Goniophotometer - Section 4.2)		Non-Worst Case		0.166
Power (Input Wattage - W)				
(Goniophotometer - Section 4.2)	IES LM-79-2008	Worst Case		40.5
(Goniophotometer - Section 4.2)		Non-Worst Case		40.1

## 2.0 Test List

Test Item	Test	Test Date	Model Number	Sample No.
1	Integrating Sphere Test	2023/1/10	ALEDS5TY	D1
2	Goniophotometer Test	2023/1/10	ALEDS5TY	D1
3	THD and PF Test	2023/1/10	ALEDS5TY	D1

### Remark(If any)

- 1、 This report shall not be used by the client to claim product endorsement by NVLAP, NIST or any agency of the US government.
- 2、 The results reported herein have been performed in accordance with the laboratory's terms of accreditation. This report shall not be reproduced except in full without the written approval of the Laboratory. The results in this report apply to the test sample(s) mentioned above at the time of the testing period only and are not to be used to indicate applicability to other similar products. This report does not imply that the product(s) has met the criteria for certification.

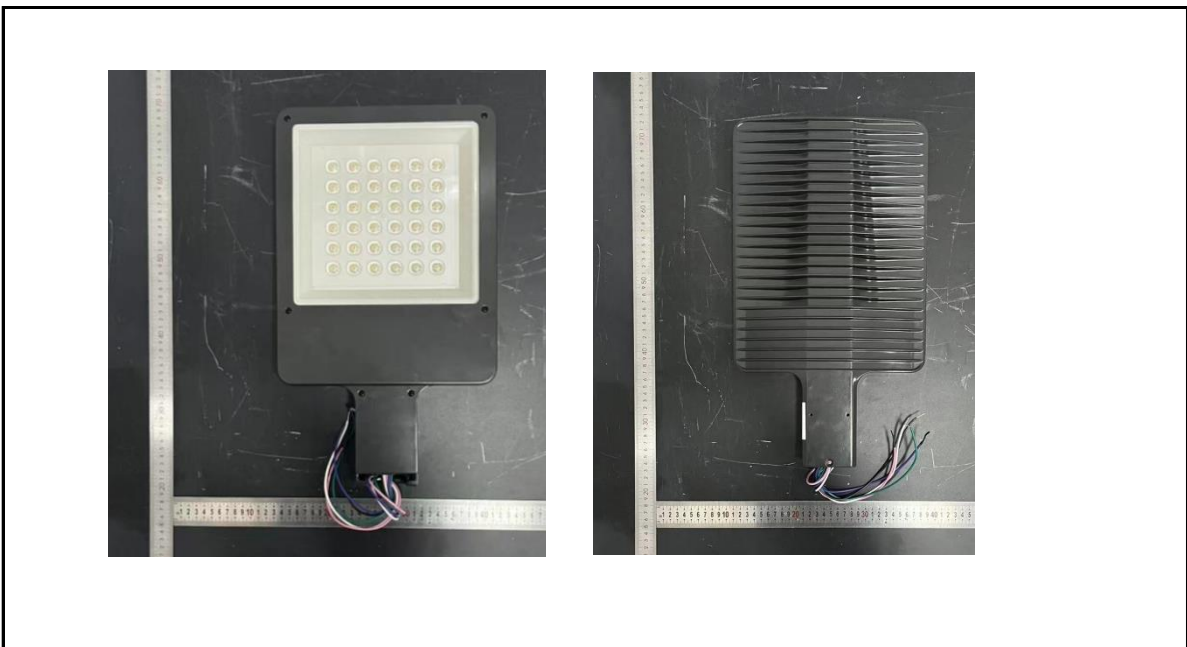
## 3.0 Production Description

**Luminaire Description:** ALEDS5TY

**Description:** 40W @ 3000K

**Electrical Specification:** 120V-277V,50/60HZ

### Photos of Luminaire Characteristics



## 4.0 LM-79 Measurement and Test Results

### 4.1 Integrating Sphere Test

Model No.	ALEDS5TY	Sample ID.	D1
Opreate time (Min.)	90	Stabilization time (Min.)	45
Temperature (°C)	25.3	Humidity (%RH)	56.0

#### Test Method

The samples were tested according to the IES LM-79-2008.

Photometric paramters were measured using an integrating sphere, a spectroradiometer and software. The ambient temperature condition inside the sphere was maintained at  $25^{\circ}\text{C} \pm 1^{\circ}\text{C}$ .

The sample measurements were made using a spectroradiometer connected by a fiber optic cable and detector through the detector port of the integrating sphere.

The voltage of an AC power supply (RMS voltage) or DC power supply (instantaneous voltage) applied to the device under test shall be regulated to within  $\pm 0.2$  percent under load.

The sample was measured using  $4\pi$  geometry and operated at rated voltage and was stabilized before measurement. Chromaticity coordinates, correlated color temperature and color rendering index were calculated from the spectral radiant flux measurements taken at 1 nm intervals over the range of 380 to 780 nm.

#### Test Result

Voltage (Vac)	Frequency (Hz)	Current (A)	Power (W)	Power Factor
120.00	60	0.333	39.8	0.995
277.07	60	0.163	39.2	0.870

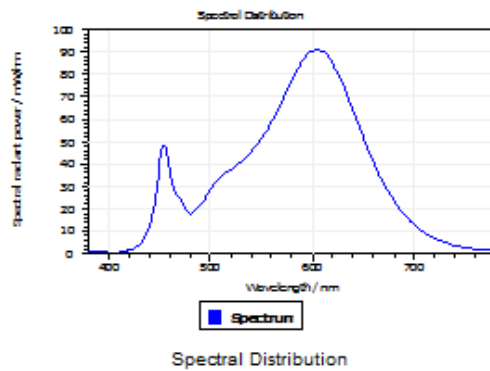
#### Test Result

CCT (K)	CRI	R9	Duv
2879	83	7	0.0012

Rf	Rg	IES Rcs,h1
84	94	-12%

## 4.1 Integrating Sphere Test

### Results

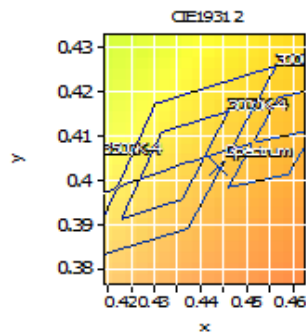


#### Spectral values

DominantWavelength 583.77 nm  
Purity 0.543  
PeakWavelength 604.57 nm  
Radiant Power 13.06 W  
Width50%:

#### Color Coordinates

Correlated Color Temperat 2879 K  
x: 0.4439 u: 0.2554 u': 0.2554  
y: 0.4033 v: 0.3481 v': 0.5221  
CRI01 81.6 CRI09 6.7  
CRI02 93.0 CRI10 84.2  
CRI03 93.8 CRI11 79.0  
CRI04 79.5 CRI12 73.8  
CRI05 82.0 CRI13 84.5  
CRI06 91.7 CRI14 97.3  
CRI07 81.1 CRI15 74.2  
CRI08 57.5 CRI16 70.9  
ResultsCRI 82.5



PlanckDistance 1.2E-003

## 4.1 Integrating Sphere Test

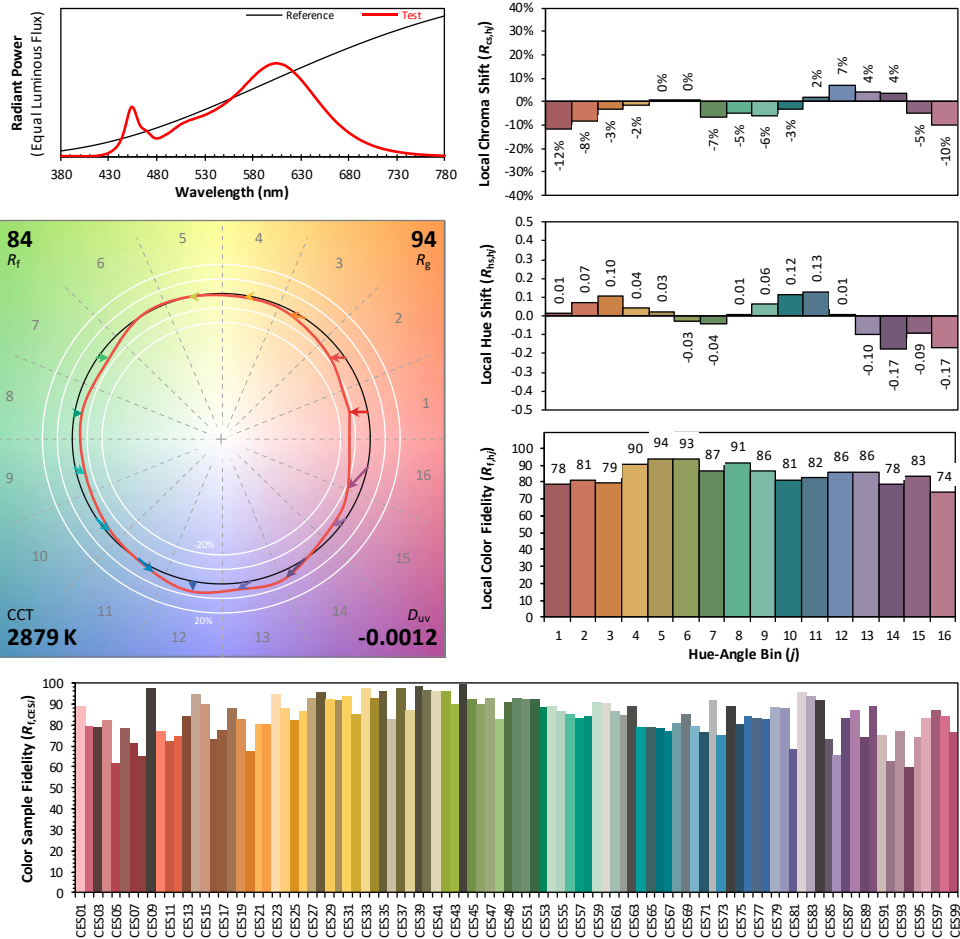
### IES TM-30-18 Color Rendition Report

Source: DLF2301106-4a

Manufacturer: RAB Lighting Inc.

Date: 2023/1/10

Model: ALED55TY



**Notes:** This is a recommended method for displaying ANSI/IES TM-30-18 information.

$x$  0.4439  
 $y$  0.4033  
 $u'$  0.2554  
 $v'$  0.5221

CIE 13.3-1995  
(CRI)

$R_a$  82  
 $R_9$  5

Colors are for visual orientation purposes only. Created with the ANSI/IES TM-30-18 Calculator Version 2.0

## 4.0 LM-79 Measurement and Test Results

### 4.2 Goniophotometer Test

Model No.	ALEDS5TY	Sample ID.	D1
Opreate time (Min.)	90	Stabilization time (Min.)	45
Temperature (°C)	25.3	Humidity (%RH)	54.0

#### Test Method

The samples were tested according to the IES LM-79-2008.

Photometric paramters were measured using a type C goniophotometer and software.

The ambient temperature shall be maintained at 25° C ± 1° C, measured at a point not more than 1 m from the sample and at the same height as the sample.

The voltage of an AC power supply (RMS voltage) or DC power supply (instantaneous voltage) applied to the device under test shall be regulated to within ±0.2 percent under load.

The samples were operated at rated voltage and was stabilized before measurement. Luminous flux, luminaire efficacy, zonal lumen were calculated from the software taken at 0.5° vertical intervals and 10° horizontal intervals.

#### Test Conditions

Condition	Voltage (Vac)	Frequency (Hz)	Current (A)	Power (W)	Power Factor
WORST CASE	119.99	60	0.339	40.5	0.995
NON-WROST CASE	277.04	60	0.166	40.1	0.870

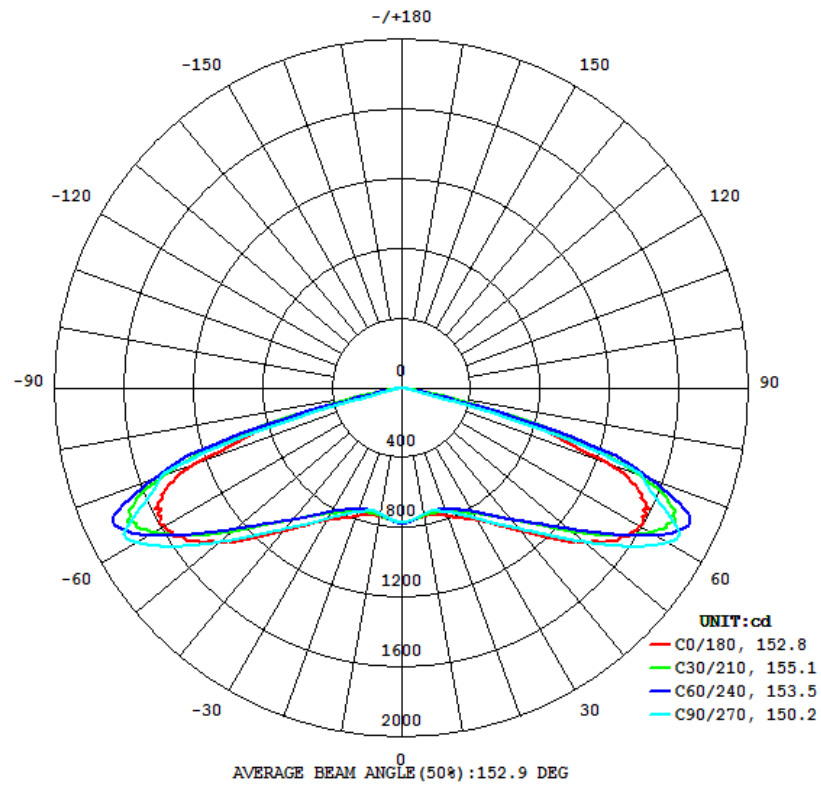
#### Test Result

Flux (lm)	Field Angle(10%)		Beam Angle(50%)		Luminous Efficacy (lm/W)
	C0-180	C90-270	C0-180	C90-270	
5918	158.3	155.2	152.8	150.2	146.1

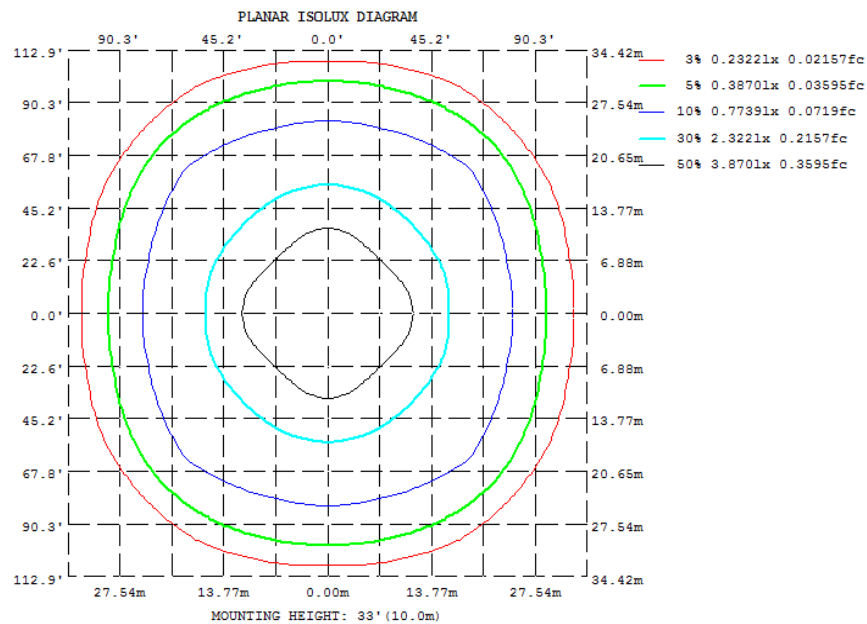
Zonal Lumen Requirement (0°-90°)	Zonal Lumen Requirement (80°-90°)	BUG rating
100.00%	0.42%	B3-U0-G1

## 4.2 Goniophotometer Test

### Light Distrubtion Curve



### Isolux Plot





## 4.2 Goniophotometer Test

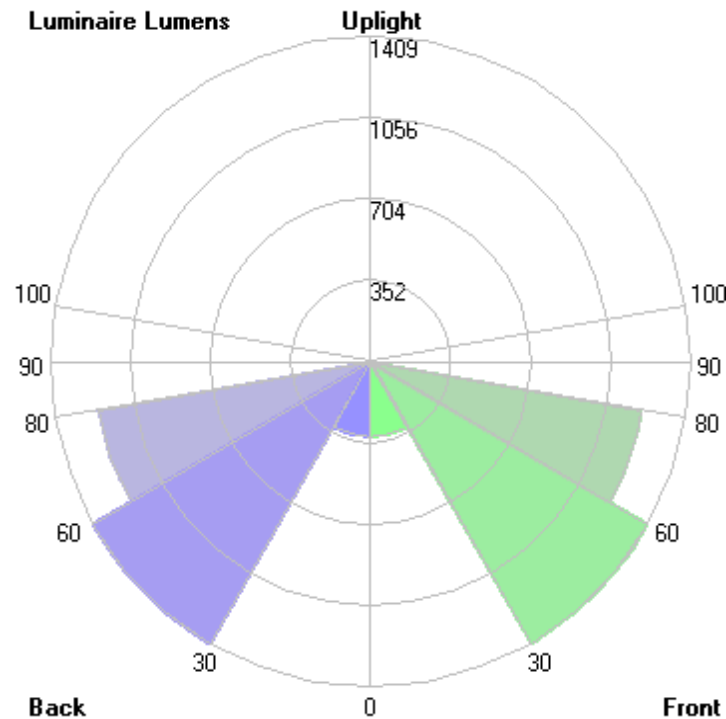
### Zonal Lumen Summary

γ	C0	C45	C90	C135	C180	C225	C270	C315
10	748.7	738.4	734.2	738.4	748.7	738.4	734.2	738.4
20	782.4	742.4	756.7	742.4	782.4	742.4	756.7	742.4
30	877.3	815.2	865.0	815.2	877.3	815.2	865.0	815.2
40	1071	969.2	1055	969.2	1071	969.2	1055	969.2
50	1379	1228	1373	1228	1379	1228	1373	1228
60	1580	1665	1767	1665	1580	1665	1767	1665
70	1266	1740	1475	1740	1266	1740	1475	1740
80	64.66	109.1	44.60	109.1	64.66	109.1	44.60	109.1
90	0	0	0	0	0	0	0	0
100	0	0	0	0	0	0	0	0
110	0	0	0	0	0	0	0	0
120	0	0	0	0	0	0	0	0
130	0	0	0	0	0	0	0	0
140	0	0	0	0	0	0	0	0
150	0	0	0	0	0	0	0	0
160	0	0	0	0	0	0	0	0
170	0	0	0	0	0	0	0	0
180	0	0	0	0	0	0	0	0
DEG	LUMINOUS INTENSITY:cd							

	Zonal (lm)		Total (lm)	Percent
0-10	72.03	0 - 10	72.03	1.22%
10-20	210.22	0 - 20	282.25	4.77%
20-30	368.60	0 - 30	650.85	11.00%
30-40	579.99	0 - 40	1230.84	20.80%
40-50	890.86	0 - 50	2121.70	35.85%
50-60	1346.44	0 - 60	3468.14	58.60%
60-70	1660.86	0 - 70	5129.00	86.66%
70-80	764.51	0 - 80	5893.51	99.58%
80-90	24.75	0 - 90	5918.26	100.00%
90-100	0.00	0 - 100	5918.26	100.00%
100-110	0.00	0 - 110	5918.26	100.00%
110-120	0.00	0 - 120	5918.26	100.00%
120-130	0.00	0 - 130	5918.26	100.00%
130-140	0.00	0 - 140	5918.26	100.00%
140-150	0.00	0 - 150	5918.26	100.00%
150-160	0.00	0 - 160	5918.26	100.00%
160-170	0.00	0 - 170	5918.26	100.00%
170-180	0.00	0 - 180	5918.26	100.00%

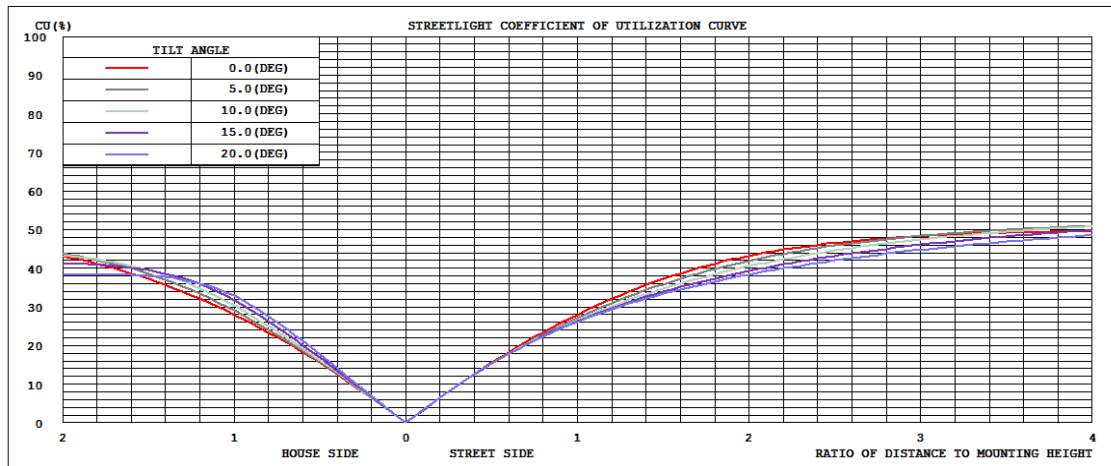
## 4.2 Goniophotometer Test

LCS/BUG

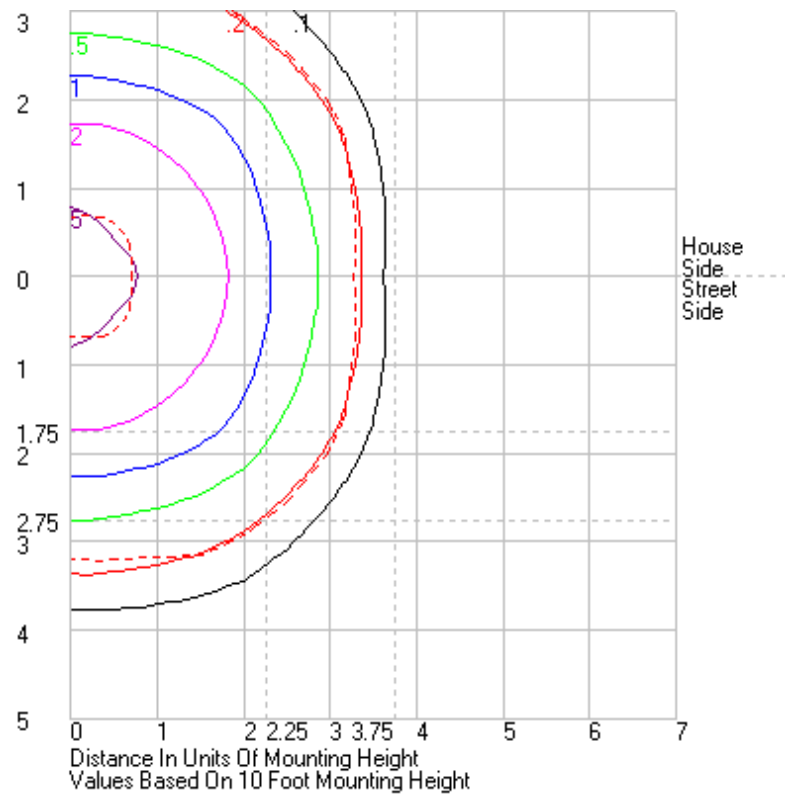


	Lumens	% Lamp	% Luminaire
FL - Front-Low (0-30)	325.4	N.A.	5.5
FM - Front-Medium (30-60)	1408.6	N.A.	23.8
FH - Front-High (60-80)	1212.7	N.A.	20.5
FVH - Front-Very High (80-90)	12.4	N.A.	0.2
BL - Back-Low (0-30)	325.4	N.A.	5.5
BM - Back-Medium (30-60)	1408.6	N.A.	23.8
BH - Back-High (60-80)	1212.7	N.A.	20.5
BVH - Back-Very High (80-90)	12.4	N.A.	0.2
UL - Uplight-Low (90-100)	0.0	N.A.	0.0
UH - Uplight-High (100-180)	0.0	N.A.	0.0
Total	5918.2	N.A.	100.0
BUG Rating	B3-U0-G1		

## Coefficients of Utilization



## Isolines



## 4.2 Goniophotometer Test

	0	15	30	45	60	75	90	105	120	135	150	165	180	195	210	225	240	255	270	285	300	315	330	345	360
0	773.95	773.95	773.95	773.95	773.95	773.95	773.95	773.95	773.95	773.95	773.95	773.95	773.95	773.95	773.95	773.95	773.95	773.95	773.95	773.95	773.95	773.95	773.95	773.95	773.95
1	773	776.56	776.64	776.88	777.13	777.04	773.74	777.04	777.13	776.88	776.64	776.56	773	776.56	776.64	776.88	777.13	777.04	773.74	777.04	777.13	776.88	776.64	776.56	773
2	771.24	774.9	774.74	774.68	774.96	775.09	771.62	775.09	774.96	774.68	774.74	774.9	771.24	774.9	774.74	774.68	774.96	775.09	771.62	775.09	774.96	774.68	774.74	774.9	771.24
3	768.97	773.05	772.58	771.81	770.98	770.85	767.4	770.85	770.98	771.81	772.58	773.05	768.97	773.05	772.58	771.81	770.98	770.85	767.4	770.85	770.98	771.81	772.58	773.05	768.97
4	765.73	769.61	768.4	767.47	766.6	765.97	762.93	765.97	766.6	767.47	768.4	769.61	765.73	769.61	768.4	767.47	766.6	765.97	762.93	765.97	766.6	767.47	768.4	769.61	765.73
5	762.29	766.06	764.29	762.22	761.62	761.82	758.89	761.82	761.62	762.22	764.29	766.06	762.29	766.06	764.29	762.22	761.62	761.82	758.89	761.82	762.22	764.29	766.06	762.29	762.29
6	758.15	761.19	759.33	757.18	755.94	756.47	753.94	756.47	755.94	757.18	759.33	761.19	758.15	761.19	759.33	757.18	755.94	756.47	753.94	756.47	755.94	757.18	759.33	761.19	758.15
7	754.75	757.26	754.1	751.23	750.12	751.14	749.25	751.14	750.12	751.23	754.1	757.26	754.75	757.26	754.1	751.23	750.12	751.14	749.25	751.14	750.12	751.23	754.1	757.26	754.75
8	752.42	754.08	749.82	746.37	745.14	745.6	743.71	745.6	745.14	746.37	749.82	754.08	752.42	754.08	749.82	746.37	745.14	745.6	743.71	745.6	745.14	746.37	749.82	754.08	752.42
9	750.52	751.63	746.62	741.95	739.68	739.99	738.53	739.99	739.68	741.95	746.62	751.63	750.52	751.63	746.62	741.95	739.68	739.99	738.53	739.99	739.68	741.95	746.62	751.63	750.52
10	748.69	749.45	743.39	738.42	734.38	735.12	734.18	735.12	734.38	738.42	743.39	749.45	748.69	749.45	743.39	738.42	734.38	735.12	734.18	735.12	734.38	738.42	743.39	749.45	748.69
11	747.82	748.08	740.96	735.42	730.31	730.81	730.49	730.81	730.31	735.42	740.96	748.08	747.82	748.08	740.96	735.42	730.31	730.81	730.49	730.81	730.31	735.42	740.96	748.08	747.82
12	748.21	747.66	739.75	733.64	727.26	727.99	727.83	727.99	727.26	733.64	739.75	747.66	748.21	747.66	739.75	733.64	727.26	727.99	727.83	727.99	727.26	733.64	739.75	747.66	748.21
13	749.03	748.29	739.37	732.41	725.59	726.31	726.8	726.31	725.59	732.41	739.37	748.29	749.03	748.29	739.37	732.41	725.59	726.31	726.8	726.31	725.59	732.41	739.37	748.29	749.03
14	750.34	749.22	739.87	732.2	725.04	726.57	727.78	726.57	725.04	732.2	739.87	749.22	750.34	749.22	739.87	732.2	725.04	726.57	727.78	726.57	725.04	732.2	739.87	749.22	750.34
15	752.47	750.02	741.35	732.65	726.19	728.38	730.38	728.38	726.19	732.65	741.35	750.02	752.47	750.02	741.35	732.65	726.19	728.38	730.38	728.38	726.19	732.65	741.35	750.02	752.47
16	755.62	752.44	742.6	733.54	728.07	731.97	734.37	731.97	728.07	733.54	742.6	752.44	755.62	752.44	742.6	733.54	728.07	731.97	734.37	731.97	728.07	733.54	742.6	752.44	755.62
17	761.39	756.33	744.18	735.38	730.83	736.3	739.69	736.3	730.83	735.38	744.18	756.33	761.39	756.33	744.18	735.38	730.83	736.3	739.69	736.3	730.83	735.38	744.18	756.33	761.39
18	767.53	761.35	747.32	737.68	734.34	741.67	744.92	741.67	734.34	737.68	747.32	761.35	767.53	761.35	747.32	737.68	734.34	741.67	744.92	741.67	734.34	737.68	747.32	761.35	767.53
19	774.78	766.82	751.31	740.02	738.29	747.36	750.39	747.36	738.29	740.02	751.31	766.82	774.78	766.82	751.31	740.02	738.29	747.36	750.39	747.36	738.29	740.02	751.31	766.82	774.78
20	782.4	773.5	755.75	742.4	742.34	753.25	756.68	753.25	742.34	742.4	755.75	773.5	782.4	773.5	755.75	742.4	742.34	753.25	756.68	753.25	742.34	742.4	755.75	773.5	782.4
21	790.67	780.95	761.01	745.75	746.89	759.57	763.35	759.57	746.89	745.75	761.01	780.95	790.67	780.95	761.01	745.75	746.89	759.57	763.35	759.57	746.89	745.75	761.01	780.95	790.67
22	798.94	788.74	766.99	750.71	751.9	766.27	770.89	766.27	751.9	750.71	766.99	788.74	798.94	788.74	766.99	750.71	751.9	766.27	770.89	766.27	751.9	750.71	766.99	788.74	798.94
23	807.06	796.76	773.57	756.52	757.75	774.62	779.88	774.62	757.75	756.52	773.57	796.76	807.06	796.76	773.57	756.52	757.75	774.62	779.88	774.62	757.75	756.52	773.57	796.76	807.06
24	815.54	805.14	780.11	762.82	763.89	783.02	789.7	783.02	763.89	762.82	780.11	805.14	815.54	805.14	780.11	762.82	763.89	783.02	789.7	783.02	763.89	762.82	780.11	805.14	815.54
25	824.32	813.4	787.35	769.73	770.98	792.46	800.34	792.46	770.98	769.73	787.35	813.4	824.32	813.4	787.35	769.73	770.98	792.46	800.34	792.46	770.98	769.73	787.35	813.4	824.32
26	833.89	821.96	794.73	777.05	778.92	803.05	811.59	803.05	778.92	777.05	794.73	821.96	833.89	821.96	794.73	777.05	778.92	803.05	811.59	803.05	778.92	777.05	794.73	821.96	833.89
27	843.37	831.37	802.52	785.12	787.59	814.34	823.87	814.34	787.59	785.12	802.52	831.37	843.37	831.37	802.52	785.12	787.59	814.34	823.87	814.34	787.59	785.12	802.52	831.37	843.37
28	853.95	841.47	811.52	794.5	797.11	826.44	836.72	826.44	797.11	794.5	811.52	841.47	853.95	841.47	811.52	794.5	797.11	826.44	836.72	826.44	797.11	794.5	811.52	841.47	853.95
29	865.19	852.09	820.75	804.25	807.52	839.15	850.64	839.15	807.52	804.25	820.75	852.09	865.19	852.09	820.75	804.25	807.52	839.15	850.64	839.15	807.52	804.25	820.75	852.09	865.19
30	877.28	863.45	831.27	815.2	818.86	852.69	865.05	852.69	818.86	815.2	831.27	863.45	877.28	863.45	831.27	815.2	818.86	852.69	865.05	852.69	818.86	815.2	831.27	863.45	877.28
31	890.82	875.22	842.6	827.04	830.83	866.82	881.15	866.82	830.83	827.04	842.6	875.22	890.82	875.22	842.6	827.04	830.83	866.82	881.15	866.82	830.83	827.04	842.6	875.22	890.82
32	904.9	888.44	854.47	839.71	843.92	882.09	897.72	882.09	843.92	839.71	854.47	888.44	904.9	888.44	854.47	839.71	843.92	882.09	897.72	882.09	843.92	839.71	854.47	888.44	904.9
33	919.95	902.69	867.61	853.51	858.85	898.66	915.03	898.66	858.85	853.51	867.61	902.69	919.95	902.69	867.61	853.51	858.85	898.66	915.03	898.66	858.85	853.51	867.61	902.69	919.95
34	937.37	918.05	881.04	868.38	874.55	915.68	932.79	915.68	874.55	868.38	881.04	918.05	937.37	918.05	881.04	868.38	874.55	915.68	932.79	915.68	874.55	868.38	881.04	918.05	937.37
35	957.39	935.72	895.74	884.57	891.77	933.53	951.03	933.53	891.77	884.57	895.74	935.72	957.39	935.72	895.74	884.57	891.77	933.53	951.03	933.53	891.77	884.57	895.74	935.72	957.39
36	978.7	954.45	910.73	898.28	909.01	951.96	969.74	951.96	909.01	898.28	910.73	954.45	978.7	954.45	910.73	898.28	909.01	951.96	969.74	951.96	909.01	898.28	910.73	954.45	978.7
37	1001.15	975.01	928	915.42	927.29	971.38	989.55	971.38	927.29	915.42	928	975.01	1001.15	975.01	928	915.42	927.29	971.38	989.55	971.38	927.29	915.42	928	975.01	1001.15
38	1022.56	996.33	946.51	932.68	945.78	991.74	1009.66	991.74	945.78	932.68	946.51	996.33	1022.56	996.33	946.51	932.68	945.78	991.74	1009.66	991.74	945.78	932.68	946.51	996.33	1022.56
39	1046.35	1018.44	965.31	950.61	965.07	1013.2	1031.67	1013.2	965.07	950.61	965.31	1018.44	1046.35	1018.44	965.31	950.61	965.07	1013.2	1031.67	1013.2	965.07	950.61	965.31	1018.44	1046.35
40	1070.97	1041.11	985.51	969.24	985.16	1035.38	1054.97	1035.38	985.16	969.24	985.51	1041.11	1070.97	1041.11	985.51	969.24	985.16	1035.38	1054.97	1035.38	985.16	969.24	985.51	1041.11	1070.97
41	1096.34	1064.78	1006.8	988.56	1005.82	1059.23	1079.21	1059.23	1005.82	988.56	1006.8	1064.78	1096.34	1064.78	1006.8	988.56	1005.82	105							

Page 13 of 17

Page 14 of 17

161	0	0	0	0	0	0	0	0	0	0	0	0	0	0	0	0	0	0	0	0	0	0	0	0	0
162	0	0	0	0	0	0	0	0	0	0	0	0	0	0	0	0	0	0	0	0	0	0	0	0	0
163	0	0	0	0	0	0	0	0	0	0	0	0	0	0	0	0	0	0	0	0	0	0	0	0	0
164	0	0	0	0	0	0	0	0	0	0	0	0	0	0	0	0	0	0	0	0	0	0	0	0	0
165	0	0	0	0	0	0	0	0	0	0	0	0	0	0	0	0	0	0	0	0	0	0	0	0	0
166	0	0	0	0	0	0	0	0	0	0	0	0	0	0	0	0	0	0	0	0	0	0	0	0	0
167	0	0	0	0	0	0	0	0	0	0	0	0	0	0	0	0	0	0	0	0	0	0	0	0	0
168	0	0	0	0	0	0	0	0	0	0	0	0	0	0	0	0	0	0	0	0	0	0	0	0	0
169	0	0	0	0	0	0	0	0	0	0	0	0	0	0	0	0	0	0	0	0	0	0	0	0	0
170	0	0	0	0	0	0	0	0	0	0	0	0	0	0	0	0	0	0	0	0	0	0	0	0	0
171	0	0	0	0	0	0	0	0	0	0	0	0	0	0	0	0	0	0	0	0	0	0	0	0	0
172	0	0	0	0	0	0	0	0	0	0	0	0	0	0	0	0	0	0	0	0	0	0	0	0	0
173	0	0	0	0	0	0	0	0	0	0	0	0	0	0	0	0	0	0	0	0	0	0	0	0	0
174	0	0	0	0	0	0	0	0	0	0	0	0	0	0	0	0	0	0	0	0	0	0	0	0	0
175	0	0	0	0	0	0	0	0	0	0	0	0	0	0	0	0	0	0	0	0	0	0	0	0	0
176	0	0	0	0	0	0	0	0	0	0	0	0	0	0	0	0	0	0	0	0	0	0	0	0	0
177	0	0	0	0	0	0	0	0	0	0	0	0	0	0	0	0	0	0	0	0	0	0	0	0	0
178	0	0	0	0	0	0	0	0	0	0	0	0	0	0	0	0	0	0	0	0	0	0	0	0	0
179	0	0	0	0	0	0	0	0	0	0	0	0	0	0	0	0	0	0	0	0	0	0	0	0	0
180	0	0	0	0	0	0	0	0	0	0	0	0	0	0	0	0	0	0	0	0	0	0	0	0	0

## 4.0 LM-79 Measurement and Test Results

### 4.3 THD and PF Test

Model No.	ALEDS5TY	Sample ID.	D1
Temperature (°C)	25.3	Humidity (%RH)	56.0

#### Test Method

The samples were tested according to the ANSI C82.77:2002.

The total harmonic distortion shall be measured to the 40th order.

The ambient temperature condition was maintained at  $25^{\circ}\text{C} \pm 1^{\circ}\text{C}$ . The sample measurements were made using a digital power meter and power supply. The sample was operated at rated voltage and was stabilized before measurement. The total harmonic distortion were calculated.

#### Test Results

Voltage (Vac)	Frequency (Hz)	Current (A)	Power (W)	Power Factor	THD
120.00	60	0.333	39.8	0.995	5.21%
277.07	60	0.163	39.2	0.870	10.32%



## 5.0 Equipment Information

Test Equipment			
Equipment ID	Equipment Name	Last Calibration Date	Calibration Due Date
DLF107	Integrating Sphere System	2022/12/26	2023/12/25
DLF108	Auxiliary Lamp	2022/12/26	2023/12/25
DLF122	Measurement Standard Lamp Standard Lamp Type: 220 V, 0.4720 A, Tungsten, Omni-derectional	2022/12/26	2023/12/25
DLF116	AC Power Source	2022/12/26	2023/12/25
DLF113	Power Meter	2022/12/26	2023/12/25
DLF112	Temperature Recorder	2022/12/26	2023/12/25
DLF114	Temperature & Humidity Datalogger	2022/12/26	2023/12/25
DLF101	Goniophotometer	2022/12/26	2023/12/25
DLF125	Standard Lamp Standard Lamp Type: 76.58 V, 6.7875 A, Tungsten, Omni-derectional	2022/12/26	2023/12/25
DLF104	AC Power Source	2022/12/26	2023/12/25
DLF507	DC Power Source	2022/12/26	2023/12/25
DLF102	Power Meter	2022/12/26	2023/12/25
DLF111	Temperature & Humidity Datalogger	2022/12/26	2023/12/25
DLF119	Power Meter	2022/12/26	2023/12/25
DLF031	Temperature data logger	2022/12/26	2023/12/25
DLF022	Digital power meter	2022/12/26	2023/12/25
DLF003	Temperature & Humidity Datalogger	2022/12/26	2023/12/25

\*\*\*\*\* End of Test Report\*\*\*\*\*