

Photometric Test Report

Relevant Standards

- ☒ IES LM-79-2008
- ☒ ANSI C82.77:2017

Prepared For

RAB Lighting Inc.

Room 6A33, No.1388, Wuzhong road, Shanghai, China

Xiao Xiang, 15921313292, Gary.Xiao@rabweb.com

Prepared By

Deliver Co., Ltd.

Block 11, 78 Keling Road, SSTP, Suzhou, China

0512-66801950, kevin.jia@szdeliver.com

Project Number

DLF2111113

Report Number

DLF2111113-12a

Test Date

2021/11/25

Issue Date

2021/12/1

Prepared By



Wangzun Zhu

Approved By



Kevin Jia

The results contained in this report pertain only to the tested sample.

This report shall not be reproduced, except in full, without written approval of Deliver Co., Ltd.

This report must not be used by the client to claim product certification, approval, or endorsement by NVLAP.

1.0 Test Summary

DLC Technical Requirements v5.1

Outdoor - Pole/Arm-Mounted Area and Roadway Luminaires				
Requirement Category	Test Method	Requirements		Test value
Luminaire Output (lm) (Goniophotometer - Section 4.2)	IES LM-79-2008	1000		44916
Minimum Luminaire Efficacy (lm/W) (Goniophotometer - Section 4.2)	IES LM-79-2008	Standard 105	Premium 120	153.3
Power (Input Wattage) (W) (Goniophotometer - Section 4.2)	IES LM-79-2008	Worst Case		293.0
Total Harmonic Distortion (A%) (THD & PF - section 4.3)	ANSI C82.77:2014	20.00%	120V	3.78%
		20.00%	277V	12.33%
Power Factor (THD & PF - section 4.3)	ANSI C82.77:2014	0.9	120V	0.999
		0.9	277V	0.951
Allowable CCTs* (K) (Integrating Sphere - Section 4.1)	IES LM-79-2008	7 step	3985±275	4005
		4 step	3985±154	
Minimum CRI (Integrating Sphere - Section 4.1)	IES LM-79-2008 CIE 13.3-1995	≥70		83
Minimum R9 (Integrating Sphere - Section 4.1)	IES LM-79-2008 CIE 13.3-1995	≥-40		9
Minimum Rf (Integrating Sphere - Section 4.1)	ANSI/IES TM-30-18	≥70		85
Minimum Rg (Integrating Sphere - Section 4.1)	ANSI/IES TM-30-18	≥89		95
Minimum IES Rcs,h1 (Integrating Sphere - Section 4.1)	ANSI/IES TM-30-18	-18%≤IES Rcs,h1≤+23%		-12%
Zonal Lumen Requirement (0°-90°) (Goniophotometer - Section 4.2)	IES LM-79-2008	100%		100.00%
Zonal Lumen Requirement (80°-90°) (Goniophotometer - Section 4.2)	IES LM-79-2008	≤10%		0.52%
Input Voltage (V)				
(Goniophotometer - Section 4.2)	IES LM-79-2008	Worst Case		120
(Goniophotometer - Section 4.2)		Non-Worst Case		277
Input Current (A)				
(Goniophotometer - Section 4.2)	IES LM-79-2008	Worst Case		2.445
(Goniophotometer - Section 4.2)		Non-Worst Case		1.075
Power (Input Wattage - W)				
(Goniophotometer - Section 4.2)	IES LM-79-2008	Worst Case		293.0
(Goniophotometer - Section 4.2)		Non-Worst Case		287.3

2.0 Test List

Test Item	Test	Test Date	Model Number	Sample No.
1	Integrating Sphere Test	2021/11/25	ALEDXL5TN	L1
2	Goniophotometer Test	2021/11/25	ALEDXL5TN	L1
3	THD and PF Test	2021/11/25	ALEDXL5TN	L1

Remark(If any)

- 1、 This report shall not be used by the client to claim product endorsement by NVLAP, NIST or any agency of the US government.
- 2、 The results reported herein have been performed in accordance with the laboratory's terms of accreditation. This report shall not be reproduced except in full without the written approval of the Laboratory. The results in this report apply to the test sample(s) mentioned above at the time of the testing period only and are not to be used to indicate applicability to other similar products. This report does not imply that the product(s) has met the criteria for certification.

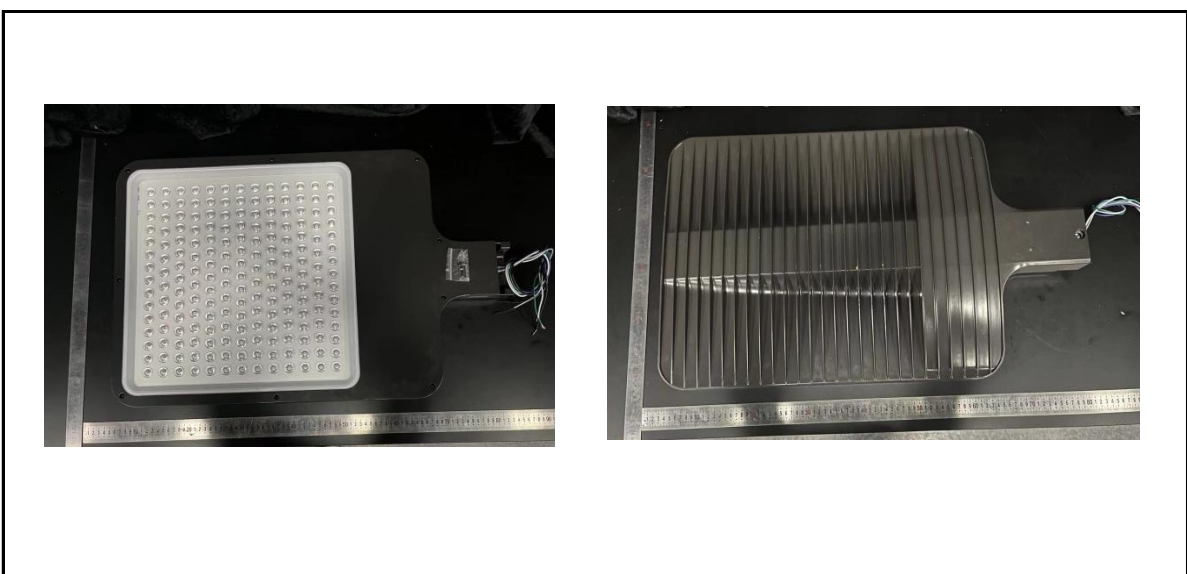
3.0 Production Description

Luminaire Description: ALEDXL5TN

Description: 300W/40,000 lm @ 4000K

Electrical Specification: 120V-277V,50/60HZ

Photos of Luminaire Characteristics



4.0 LM-79 Measurement and Test Results

4.1 Integrating Sphere Test

Model No.	ALEDXL5TN	Sample ID.	L1
Operate time (Min.)	90	Stabilization time (Min.)	45
Temperature (°C)	25.3	Humidity (%RH)	56.0

Test Method

The samples were tested according to the IES LM-79-2008.

Photometric parameters were measured using an integrating sphere, a spectroradiometer and software. The ambient temperature condition inside the sphere was maintained at $25^{\circ}\text{C} \pm 1^{\circ}\text{C}$.

The sample measurements were made using a spectroradiometer connected by a fiber optic cable and detector through the detector port of the integrating sphere.

The voltage of an AC power supply (RMS voltage) or DC power supply (instantaneous voltage) applied to the device under test shall be regulated to within ± 0.2 percent under load.

The sample was measured using 4π geometry and operated at rated voltage and was stabilized before measurement. Chromaticity coordinates, correlated color temperature and color rendering index were calculated from the spectral radiant flux measurements taken at 1 nm intervals over the range of 380 to 780 nm.

Test Result

Voltage (Vac)	Frequency (Hz)	Current (A)	Power (W)	Power Factor
120.01	60	2.436	292.1	0.999
277.04	60	1.093	287.8	0.951

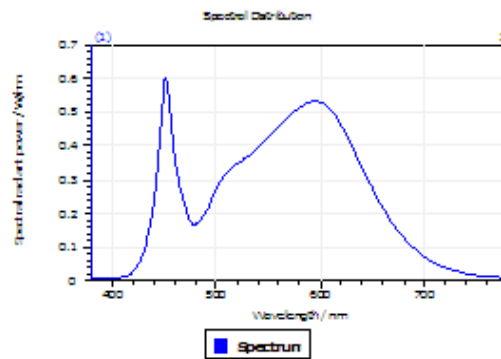
Test Result

CCT (K)	CRI	R9	Duv
4005	83	9	0.00049

Rf	Rg	IES Rcs,h1
85	95	-12%

4.1 Integrating Sphere Test

Results



Spectral values

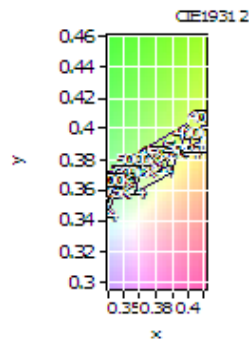
DominantWavelength	578.79 nm
Purity	0.276
PeakWavelength	451.60 nm
Radiant Power	93.73 W
Width50%	20.95 nm

Color Coordinates

Correlated Color Temperat 4005 K

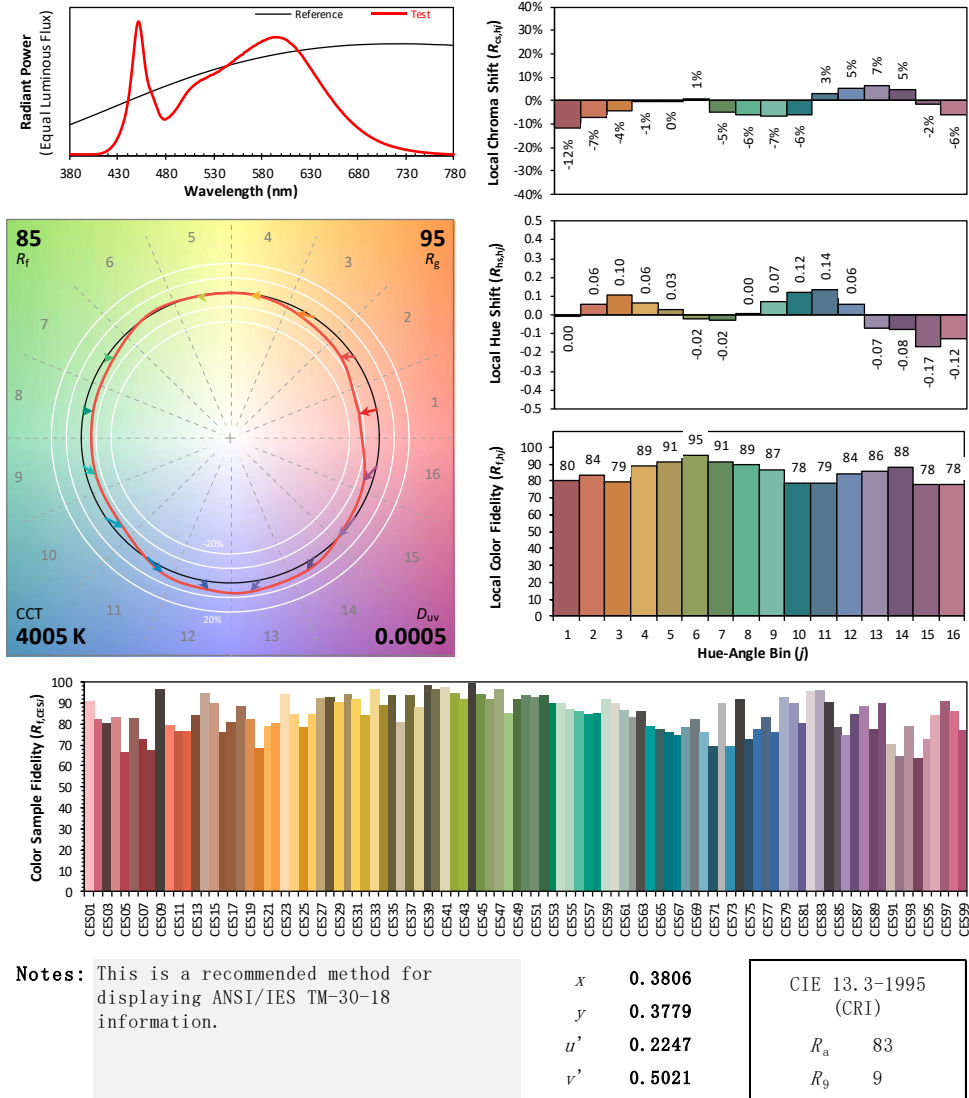
x: 0.3806 u: 0.2247 u': 0.2247
y: 0.3779 v: 0.3347 v': 0.5021

ResultsCRICRI01	81.6	ResultsCRICRI09	8.7
ResultsCRICRI02	90.2	ResultsCRICRI10	76.8
ResultsCRICRI03	95.8	ResultsCRICRI11	80.8
ResultsCRICRI04	81.7	ResultsCRICRI12	63.9
ResultsCRICRI05	81.8	ResultsCRICRI13	83.8
ResultsCRICRI06	86.2	ResultsCRICRI14	98.1
ResultsCRICRI07	85.7	ResultsCRICRI15	75.2
ResultsCRICRI08	64.2	ResultsCRICRI16	72.6
ResultsCRI	83.4		



PlanckDistance 4.9E-004

4.1 Integrating Sphere Test



lors are for visual orientation purposes only. Created with the ANSI/IES TM-30-18 Calculator Version 2.0

4.0 LM-79 Measurement and Test Results

4.2 Goniophotometer Test

Model No.	ALEDXL5TN	Sample ID.	L1
Opreate time (Min.)	90	Stabilization time (Min.)	45
Temperature (°C)	25.3	Humidity (%RH)	54.0

Test Method

The samples were tested according to the IES LM-79-2008.

Photometric paramters were measured using a type C goniophotometer and software.

The ambient temperature shall be maintained at $25^{\circ}\text{C} \pm 1^{\circ}\text{C}$, measured at a point not more than 1 m from the sample and at the same height as the sample.

The voltage of an AC power supply (RMS voltage) or DC power supply (instantaneous voltage) applied to the device under test shall be regulated to within ± 0.2 percent under load.

The samples were operated at rated voltage and was stabilized before measurement. Luminous flux, luminaire efficacy, zonal lumen were calculated from the software taken at 0.5° vertical intervals and 10° horizontal intervals.

Test Conditions

Condition	Voltage (Vac)	Frequency (Hz)	Current (A)	Power (W)	Power Factor
WORST CASE	119.97	60	2.445	293.0	0.999
NON-WROST CASE	277.04	60	1.075	287.3	0.965

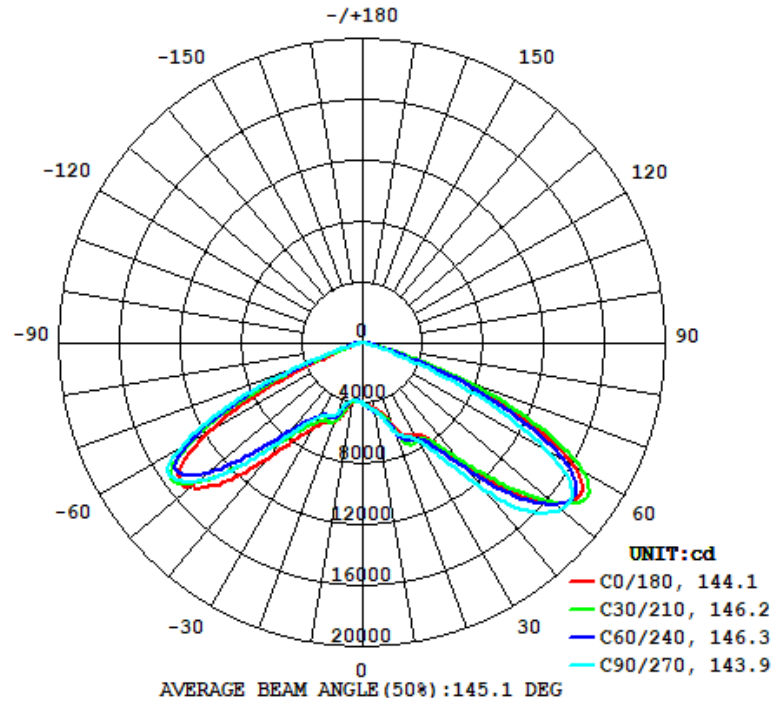
Test Result

Flux (lm)	Field Angle(10%)		Beam Angle(50%)		Luminous Efficacy (lm/W)
	C0-180	C90-270	C0-180	C90-270	
44916	163.4	152.8	144.1	143.9	153.3

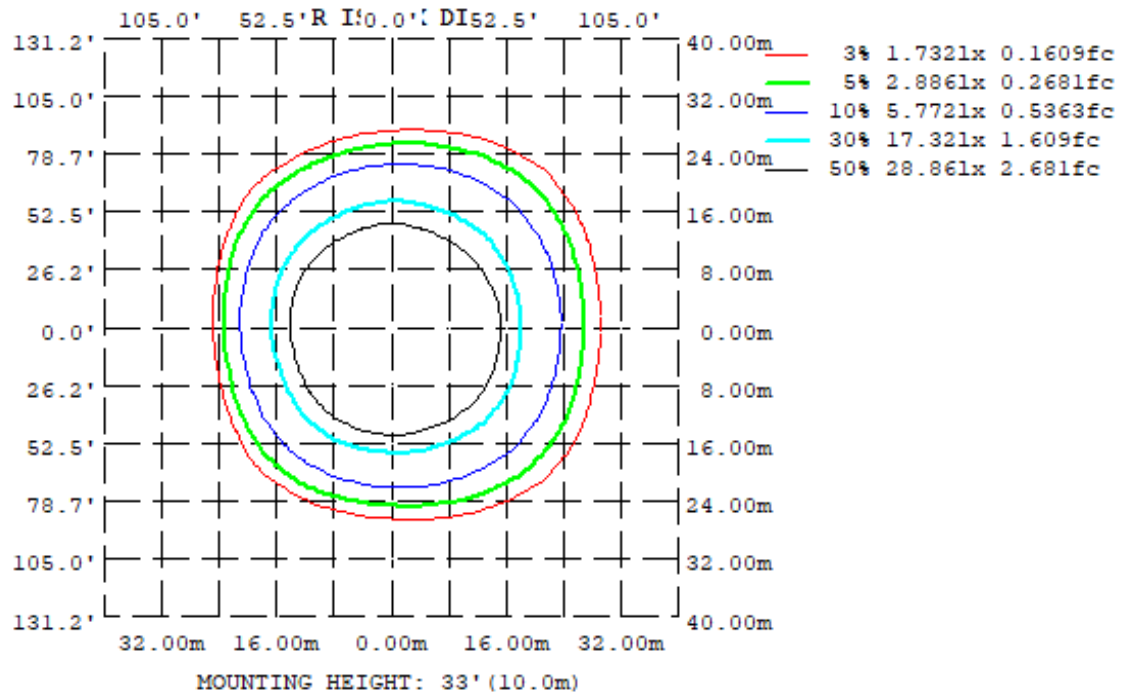
Zonal Lumen Requirement (0° - 90°)	Zonal Lumen Requirement (80° - 90°)	BUG rating
100.00%	0.52%	B5-U0-G4

4.2 Goniophotometer Test

Light Distrubtion Curve



Isolux Plot



4.2 Goniophotometer Test

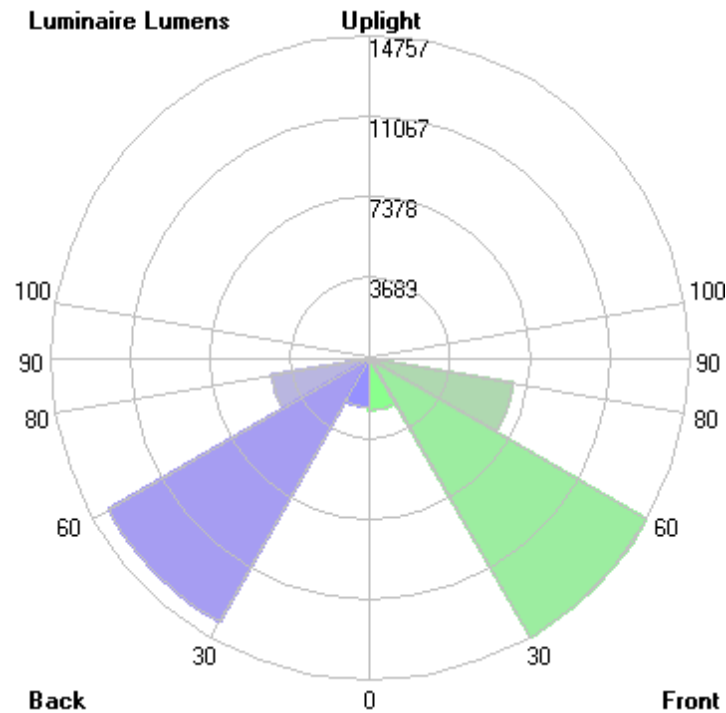
Zonal Lumen Summary

γ	C0	C45	C90	C135	C180	C225	C270	C315
10	442.6	457.9	454.7	428.8	405.4	388.3	390.1	415.6
20	562.6	596.3	621.4	620.3	558.0	545.4	494.7	505.9
30	700.6	739.8	749.6	669.6	641.7	579.5	564.2	627.0
40	1042	1011	1274	993.2	1009	779.2	833.9	783.1
50	1645	1647	1706	1557	1467	1343	1415	1341
60	1610	1664	1385	1350	1175	1368	1395	1589
70	606.0	686.6	321.1	371.7	188.0	413.6	389.5	758.3
80	72.04	74.29	24.46	44.53	34.74	49.18	25.76	76.04
90	0	0	0	0	0	0	0	0
100	0	0	0	0	0	0	0	0
110	0	0	0	0	0	0	0	0
120	0	0	0	0	0	0	0	0
130	0	0	0	0	0	0	0	0
140	0	0	0	0	0	0	0	0
150	0	0	0	0	0	0	0	0
160	0	0	0	0	0	0	0	0
170	0	0	0	0	0	0	0	0
180	0	0	0	0	0	0	0	0
DEG	LUMINOUS INTENSITY: *10cd							

	Zonal (lm)		Total (lm)	Percent
0-10	393.42	0 - 10	393.42	0.88%
10-20	1367.87	0 - 20	1761.29	3.92%
20-30	2895.38	0 - 30	4656.67	10.37%
30-40	4892.09	0 - 40	9548.76	21.26%
40-50	9773.09	0 - 50	19321.85	43.02%
50-60	14026.81	0 - 60	33348.66	74.25%
60-70	9546.19	0 - 70	42894.85	95.50%
70-80	1787.16	0 - 80	44682.01	99.48%
80-90	233.58	0 - 90	44915.59	100.00%
90-100	0.00	0 - 100	44915.59	100.00%
100-110	0.00	0 - 110	44915.59	100.00%
110-120	0.00	0 - 120	44915.59	100.00%
120-130	0.00	0 - 130	44915.59	100.00%
130-140	0.00	0 - 140	44915.59	100.00%
140-150	0.00	0 - 150	44915.59	100.00%
150-160	0.00	0 - 160	44915.59	100.00%
160-170	0.00	0 - 170	44915.59	100.00%
170-180	0.00	0 - 180	44915.59	100.00%

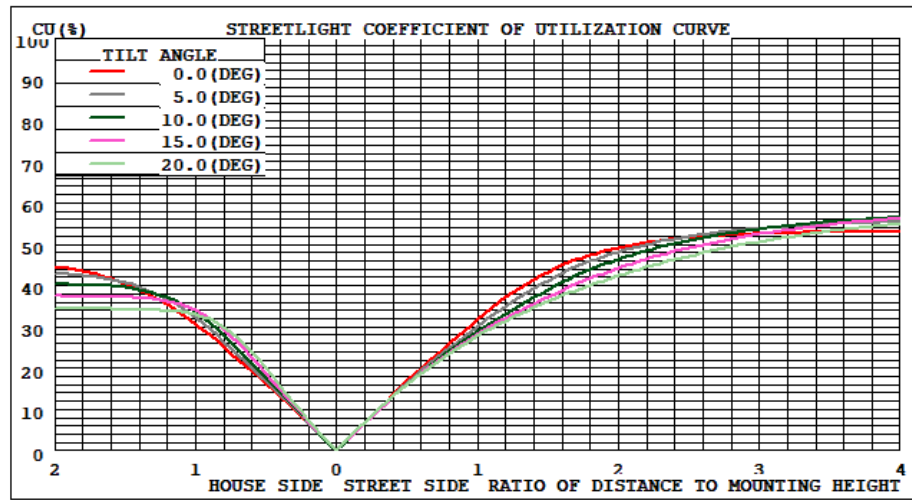
4.2 Goniophotometer Test

LCS/BUG

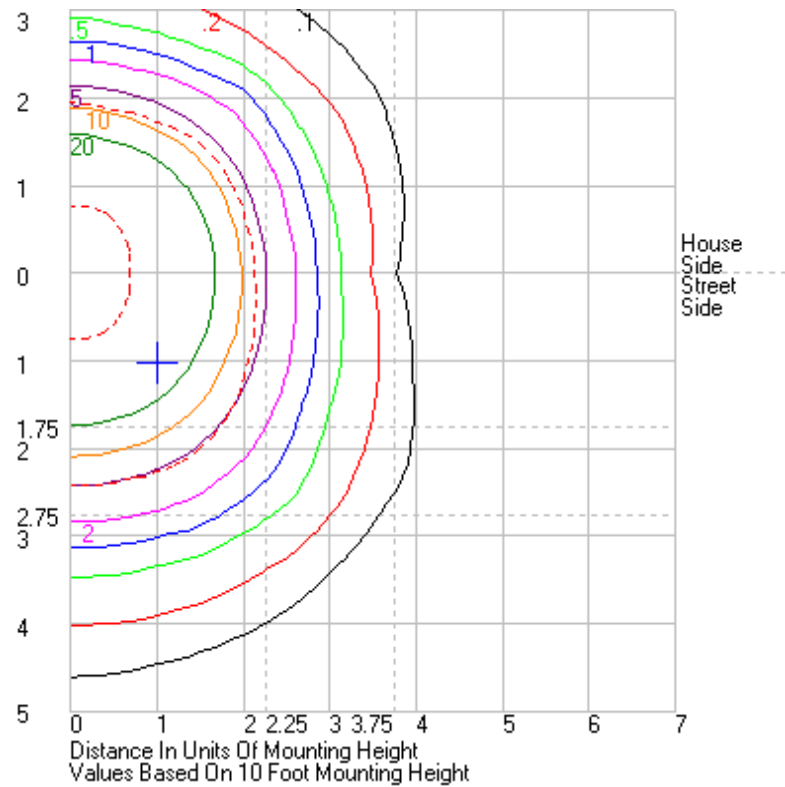


	Lumens	% Lamp	% Luminaire
FL - Front-Low (0-30)	2389.2	N.A.	5.3
FM - Front-Medium (30-60)	14756.6	N.A.	32.9
FH - Front-High (60-80)	6736.4	N.A.	15.0
FVH - Front-Very High (80-90)	158.5	N.A.	0.4
BL - Back-Low (0-30)	2267.5	N.A.	5.0
BM - Back-Medium (30-60)	13935.3	N.A.	31.0
BH - Back-High (60-80)	4597.0	N.A.	10.2
BVH - Back-Very High (80-90)	75.1	N.A.	0.2
UL - Uplight-Low (90-100)	0.0	N.A.	0.0
UH - Uplight-High (100-180)	0.0	N.A.	0.0
Total	44915.7	N.A.	100.0
BUG Rating	B5-U0-G4		

Coefficients of Utilization



Isolines



4.2 Goniophotometer Test

	0	15	30	45	60	75	90	105	120	135	150	165	180	195	210	225	240	255	270	285	300	315	330	345	360
0	4017.89	4017.89	4017.89	4017.89	4017.89	4017.89	4017.89	4017.89	4017.89	4017.89	4017.89	4017.89	4017.89	4017.89	4017.89	4017.89	4017.89	4017.89	4017.89	4017.89	4017.89	4017.89	4017.89	4017.89	4017.89
1	4043.69	4051.28	4057.47	4059.44	4066.94	4063.96	4057.75	4047.92	4038.08	4026.85	4014.84	4002.66	3993.36	3985.68	3980.89	3977.69	3984.31	3986.5	3992.25	3999.59	4008.97	4018.89	4028.04	4035.68	4043.69
2	4075.74	4089.77	4102.13	4106.74	4113.31	4107.09	4094.93	4077.33	4057.78	4037.01	4014.9	3990.95	3971.59	3956.78	3947.26	3942.82	3951.98	3957.69	3969.01	3984.71	4003.28	4022.43	4042.09	4059.38	4075.74
3	4109.49	4130.08	4146.86	4152.31	4158.63	4151.9	4135.8	4110.12	4078.75	4045.07	4015.52	3981.48	3952.76	3929.7	3918.22	3914.93	3925.34	3935.85	3951.66	3975.32	4003.78	4032.28	4061.32	4088.03	4109.49
4	4141.15	4169.38	4189.73	4200.57	4211.65	4205.13	4184.32	4150.06	4106.44	4059.2	4016.13	3976.32	3938.33	3910.2	3897.41	3893.66	3903.27	3915.57	3935.79	3967.59	4005.59	4044.27	4081.31	4115.5	4141.15
5	4178.62	4211.65	4235.86	4253.28	4270.83	4261.66	4236.63	4196.6	4138.99	4080.86	4023.42	3974.36	3925.55	3891.92	3881.4	3876.66	3885.43	3898.42	3922.07	3961.02	4009.5	4056.59	4102.64	4145.77	4178.62
6	4223.01	4262.7	4289.67	4312.5	4331.08	4321.81	4295.36	4243.91	4178.78	4107.17	4038.99	3984.28	3926.64	3886.42	3867.8	3865.84	3864.51	3879.77	3905.63	3953.24	4014.43	4070.97	4126.89	4180.73	4223.01
7	4271.31	4317.87	4352.19	4373.85	4393.78	4385.77	4355.93	4299.67	4226.48	4140.2	4066.2	4005.84	3940.48	3895.02	3867.72	3857.87	3852.62	3867.29	3895.06	3947.89	4016.2	4086.79	4158.61	4221.23	4271.31
8	4320.85	4377.39	4418.92	4442.36	4455.29	4448.92	4415.74	4355.14	4274.35	4180.97	4105.29	4038.32	3965.24	3913.82	3880.59	3856.2	3850.53	3863.83	3891.37	3945.76	4019.79	4103.6	4193.9	4264.98	4320.85
9	4373.44	4438.16	4488.55	4512.71	4523.21	4518.02	4482.94	4418.3	4323.95	4232.24	4155.4	4082.56	4004.06	3945.98	3903.69	3863.89	3855.08	3867.96	3895.33	3951.86	4027.64	4127.43	4228.88	4307.9	4373.44
10	4426.04	4498.43	4555.57	4579.44	4591.83	4585.03	4547	4482.19	4377.27	4287.93	4214.08	4136.86	4053.85	3993.08	3938.75	3883.46	3862.83	3875.76	3901.09	3963.18	4043.69	4155.72	4266.49	4355.71	4426.04
11	4487.33	4567.94	4626.94	4653.41	4665.8	4647.65	4613.48	4549.77	4443.35	4354.94	4286.83	4204.86	4116.7	4051.79	3987.45	3915.35	3881.64	3890.44	3914.4	3979.15	4069.27	4185.99	4310.21	4408.54	4487.33
12	4552.9	4638.96	4700.01	4725.31	4736.09	4716.29	4688.64	4627.69	4517.78	4433.93	4369.41	4288.56	4194.25	4123.01	4046.37	3959.29	3918.52	3915.29	3936.04	4001.85	4101.63	4222.94	4358.37	4467.5	4552.9
13	4626.38	4714.38	4775.33	4798.72	4808.62	4794.92	4771.39	4717.71	4613.89	4536.07	4480.12	4404.1	4298.68	4219.74	4121.94	4027.35	3971.1	3953.49	3972.26	4035.99	4139.08	4265.58	4410.54	4530.55	4626.38
14	4704.48	4798.52	4855.21	4876.46	4893.23	4891.93	4882.44	4836.35	4746.56	4673.81	4625.48	4564.28	4445.82	4359.41	4233.06	4122.11	4047.19	4011.68	4026.4	4085.73	4183.75	4315.24	4468.32	4600.4	4704.48
15	4786.82	4883.15	4939.62	4959.38	4985.84	5011.7	5028.92	4999.14	4922.62	4852.91	4819.98	4774.6	4649.33	4554.72	4403.54	4259.97	4160.58	4105.1	4109.45	4154.95	4241.72	4369.83	4535.15	4674.2	4786.82
16	4880.96	4980.82	5037.94	5062.78	5117.15	5181.63	5226.63	5215.35	5159.35	5098.37	5073.21	5030.68	4889.66	4799.28	4639.08	4462.18	4320.07	4241.8	4235.89	4258.76	4320.76	4438.4	4611.7	4759.15	4880.96
17	4993.82	5099.37	5160.39	5198.97	5289.26	5396.78	5455.91	5464.68	5437.79	5376.84	5345.41	5274.48	5130.41	5053.39	4903.48	4712.29	4518.66	4412.18	4396.37	4400.43	4428.52	4531.33	4704.75	4863.47	4993.82
18	5154.59	5265.05	5321.67	5386.12	5515.74	5642.3	5714.66	5722.45	5726.32	5684.74	5615.69	5488.65	5338.47	5281.52	4998.17	4748.68	4609.84	4586.72	4575.11	4578.4	4661.89	4831.97	5012.06	5154.59	
19	5369.22	5480.23	5542.92	5648.52	5786.62	5915.55	5974.2	5996.93	6021.04	5976.81	5841.68	5648.56	5485.58	5448.34	5386.86	5253.79	4975.44	4802.73	4779.59	4774.41	4767.86	4838.77	5014.44	5211.07	5369.22
20	5626.24	5758.29	5840.22	5963.35	6073.54	6176.55	6214.1	6240.87	6271.91	6203.19	6005.54	5761.47	5580.11	5554.11	5540.79	5454.04	5174.68	4971.24	4947.31	4978.95	4984.91	5059.15	5248.5	5457.57	5626.24
21	5917.75	6082.91	6214.07	6326.24	6385.3	6415.52	6429.08	6434.29	6470.67	6365.12	6109.34	5831.92	5640.58	5613.87	5633.73	5586.49	5318.53	5105.33	5084.09	5167.94	5222.37	5329.97	5515.86	5729.84	5917.75
22	6208.8	6414.93	6605.23	6702.65	6658.04	6595.83	6571.63	6572.84	6599.35	6450.55	6156.62	5868.3	5679.54	5648.76	5680.87	5653.39	5399.56	5195.85	5181.27	5320.16	5458.89	5606.54	5785.64	6008.19	6208.8
23	6471.05	6741.37	6971.17	7046.79	6869.85	6742.7	6678.72	6660.68	6662.66	6482.44	6174.83	5891.74	5707.92	5667.49	5693.42	5663.85	5428.07	5245.39	5247.34	5434.27	5661.7	5876.12	6037.4	6252.05	6471.05
24	6648.2	6980.57	7257.17	7287.37	7039.25	6859.91	6773.91	6736.55	6684.58	6478.59	6179.62	5913.55	5742.68	5686.67	5690.99	5635.8	5426.53	5279.75	5300.05	5521.48	5820.34	6092.36	6236.14	6414.09	6648.2
25	6758.79	7131.56	7430.64	7414.66	7155.61	6957.71	6850.1	6795.68	6691.91	6464.33	6180.1	5947.58	5723.91	5623.91	5604.37	5411.15	5308.05	5347.84	5586.98	5929.83	6252.33	6377.4	6519.13	6758.79	
26	6827.32	7220.79	7497.8	7468.97	7231.86	7029.82	6927.18	6841.23	6700.32	6456.03	6187.21	6002.99	5879.13	5789.45	5713.56	5595.14	5395.31	5326.22	5388.19	5640.25	5989.08	6334.04	6461.8	6584.49	6827.32
27	6868.35	7260.52	7495.92	7471.95	7265.13	7102.37	7015.81	6904.07	6721.16	6465.81	6216.2	6083.58	5987.48	5873.75	5758.14	5609.19	5393.15	5343.88	5424.11	5676.16	6007.47	6351.6	6506.94	6620.25	6868.35
28	6899.74	7275.32	7469.59	7444.6	7285	7192.47	7135.02	6998.33	6727.36	6508.18	6277.36	6187.37	6123.62	5988.19	5829.23	5648.97	5415.41	5383.68	5472.99	5699.86	6004.83	6322.18	6518.91	6643.1	6899.74
29	6939.07	7285.84	7439.52	7409.39	7319.2	7311.17	7293.58	7129.36	6877.76	6582.19	6371.1	6322.02	6275.69	6124.58	5926.45	5710.43	5467.62	5444.76	5545.97	5738.56	5994.78	6289.26	6513.21	6660.15	6939.07
30	7006.33	7308.91	7423.79	7398.29	7376.42	7458.29	7496.14	7302.64	7010.38	6695.51	6498.04	6484.49	6417.39	6284.25	6050.02	5794.79	5540.97	5529.69	5641.84	5793.86	5998.29	6270.19	6513.49	6677.73	7006.33
31	7100	7352.65	7437.67	7421.65	7470.74	7658.81	7730.85	7523.13	7183.22	6834.2	6645.67	6672.67	6563.63	6420.68	6191.37	5899.18	5641.5	5643.02	5768.87	5876.64	6031.4	6278.24	6537.67	6754.73	7100
32	7229.53	7434.27	7496.55	7490.15	7612.7	7899.72	8017.46	7786.4	7387.59	7009.03	6829.83	6888.18	6841.73	6562.35	6351.4	6025.85	5762.64	5783.07	5917.55	5988.32	6095.67	6309.75	6642.49	6856.83	7229.53
33	7397.15	7565.85	7603.89	7613.25	7814.16	8202.07	8357.75	8103.53	7650.17	7220.26	7044.53	7129.77	7089.65	6840.04	6516.72	6170.64	5899.14	5942.37	6092.7	6133.85	6185.91	6373.61	6741.71	7002.99	7397.15
34	7608.19	7746.29	7762.96	7792.5	8083.45	8575.64	8790.43	8496.12	7960.81	7471.32	7300.08	7417.68	7363.34	7079.41	6683.46	6329.99	6058.5	6131.53	6283.56	6332.77	6310.51	6476.17	6764.96	7187.32	7608.19
35	7870.51	7995.01	7994.07	8035.45	8419.44	9040.41	9319.32	8952.03	8322.3	7773.52	7601.27	7749.92	7674.26	7356.77	6899.52	6497.07	6241.87	6352.63	6474.16	6559.35	6435.8	6592.77	6931.05	7415.65	7870.51
36	8192.03	8315.91	8282.07	8340.4	8818.98	9581.25	9920.24	9507.5	8741.34	8112.49	7935.77	8098.23	8018.98	7687.22	7144.81	6664.96	6438.99	6573.74	6757.4	6714.68	6566.1	6734.38	7144.63	7696.52	8192.03
37	8616.21	8735.93	8643.58	8708.3	9272.83	10180	10565.6	10124.4	9224.57	8506.2	8327.99	8558.75	8464.71	8063.76	7435.92	6884.69	6636.78	6836.4	7069.24	6999.81	6843.82	6942.1	7405.42	8029.07	8616.21
38	9155.2	9214.45	9054.6	9117.91	9792.87	10836.9	11272.8	10767.1	9755.95	8940.28	8745.01	9003.47	8923.49	8516.14	7770.36										

Page 13 of 17

Page 14 of 17

161	0	0	0	0	0	0	0	0	0	0	0	0	0	0	0	0	0	0	0	0	0	0	0	0
162	0	0	0	0	0	0	0	0	0	0	0	0	0	0	0	0	0	0	0	0	0	0	0	0
163	0	0	0	0	0	0	0	0	0	0	0	0	0	0	0	0	0	0	0	0	0	0	0	0
164	0	0	0	0	0	0	0	0	0	0	0	0	0	0	0	0	0	0	0	0	0	0	0	0
165	0	0	0	0	0	0	0	0	0	0	0	0	0	0	0	0	0	0	0	0	0	0	0	0
166	0	0	0	0	0	0	0	0	0	0	0	0	0	0	0	0	0	0	0	0	0	0	0	0
167	0	0	0	0	0	0	0	0	0	0	0	0	0	0	0	0	0	0	0	0	0	0	0	0
168	0	0	0	0	0	0	0	0	0	0	0	0	0	0	0	0	0	0	0	0	0	0	0	0
169	0	0	0	0	0	0	0	0	0	0	0	0	0	0	0	0	0	0	0	0	0	0	0	0
170	0	0	0	0	0	0	0	0	0	0	0	0	0	0	0	0	0	0	0	0	0	0	0	0
171	0	0	0	0	0	0	0	0	0	0	0	0	0	0	0	0	0	0	0	0	0	0	0	0
172	0	0	0	0	0	0	0	0	0	0	0	0	0	0	0	0	0	0	0	0	0	0	0	0
173	0	0	0	0	0	0	0	0	0	0	0	0	0	0	0	0	0	0	0	0	0	0	0	0
174	0	0	0	0	0	0	0	0	0	0	0	0	0	0	0	0	0	0	0	0	0	0	0	0
175	0	0	0	0	0	0	0	0	0	0	0	0	0	0	0	0	0	0	0	0	0	0	0	0
176	0	0	0	0	0	0	0	0	0	0	0	0	0	0	0	0	0	0	0	0	0	0	0	0
177	0	0	0	0	0	0	0	0	0	0	0	0	0	0	0	0	0	0	0	0	0	0	0	0
178	0	0	0	0	0	0	0	0	0	0	0	0	0	0	0	0	0	0	0	0	0	0	0	0
179	0	0	0	0	0	0	0	0	0	0	0	0	0	0	0	0	0	0	0	0	0	0	0	0
180	0	0	0	0	0	0	0	0	0	0	0	0	0	0	0	0	0	0	0	0	0	0	0	0

4.0 LM-79 Measurement and Test Results

4.3 THD and PF Test

Model No.	ALEDXL5TN	Sample ID.	L1
Temperature (°C)	25.3	Humidity (%RH)	56.0

Test Method

The samples were tested according to the ANSI C82.77:2002.

The total harmonic distortion shall be measured to the 40th order.

The ambient temperature condition was maintained at $25^{\circ}\text{C} \pm 1^{\circ}\text{C}$. The sample measurements were made using a digital power meter and power supply. The sample was operated at rated voltage and was stabilized before measurement. The total harmonic distortion were calculated.

Test Results

Voltage (Vac)	Frequency (Hz)	Current (A)	Power (W)	Power Factor	THD
120.01	60	2.436	292.1	0.999	3.78%
277.04	60	1.093	287.8	0.951	12.33%

5.0 Equipment Information

Test Equipment			
Equipment ID	Equipment Name	Last Calibration Date	Calibration Due Date
DLF107	Integrating Sphere System	2020/12/26	2021/12/25
DLF108	Auxiliary Lamp	2020/12/26	2021/12/25
DLF122	Measurement Standard Lamp Standard Lamp Type: 220 V, 0.4720 A, Tungsten, Omni-derectional	2020/12/26	2021/12/25
DLF116	AC Power Source	2020/12/26	2021/12/25
DLF113	Power Meter	2020/12/26	2021/12/25
DLF112	Temperature Recorder	2020/12/26	2021/12/25
DLF114	Temperature & Humidity Datalogger	2020/12/26	2021/12/25
DLF101	Goniophotometer	2020/12/26	2021/12/25
DLF125	Standard Lamp Standard Lamp Type: 76.58 V, 6.7875 A, Tungsten, Omni-derectional	2020/12/26	2021/12/25
DLF104	AC Power Source	2020/12/26	2021/12/25
DLF507	DC Power Source	2020/12/26	2021/12/25
DLF102	Power Meter	2020/12/26	2021/12/25
DLF111	Temperature & Humidity Datalogger	2020/12/26	2021/12/25
DLF119	Power Meter	2020/12/26	2021/12/25
DLF031	Temperature data logger	2020/12/26	2021/12/25
DLF022	Digital power meter	2020/12/26	2021/12/25
DLF003	Temperature & Humidity Datalogger	2020/12/26	2021/12/25

***** End of Test Report*****