

Photometric Test Report

Relevant Standards

- ☒ IES LM-79-2008
- ☒ ANSI C82.77:2017

Prepared For RAB Lighting Inc.

Room 6A33, No.1388, Wuzhong road, Shanghai, China

Xiao Xiang, 15921313292, Gary.Xiao@rabweb.com

Prepared By

Deliver Co., Ltd.

Block 11, 78 Keling Road, SSTP, Suzhou, China

0512-66801950, kevin.jia@szdeliver.com

Project Number

DLF2212110

Report Number

DLF2212110-15a

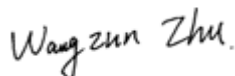
Test Date

2023/1/3

Issue Date

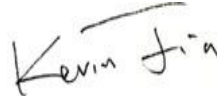
2023/1/5

Prepared By



Wangzun Zhu

Approved By



Kevin Jia

The results contained in this report pertain only to the tested sample.

This report shall not be reproduced, except in full, without written approval of Deliver Co., Ltd.

This report must not be used by the client to claim product certification, approval, or endorsement by NVLAP.

1.0 Test Summary

DLC Technical Requirements v5.1

Indoor - Linear Ambient - Direct Linear Ambient Luminaires				
Requirement Category	Test Method	Requirements		Test value
Luminaire Output (lm) (Goniophotometer - Section 4.2)	IES LM-79-2008	1500		4213
Lumen/ft (Goniophotometer - Section 4.2)	IES LM-79-2008	≥375		1053
Minimum Luminaire Efficacy (lm/W) (Goniophotometer - Section 4.2)	IES LM-79-2008	Standard 115	Premium 130	141.4
Power (Input Wattage) (W) (Goniophotometer - Section 4.2)	IES LM-79-2008	Wroست Case		29.8
Total Harmonic Distortion (A%) (THD & PF - section 4.3)	ANSI C82.77:2014	20.00%	120V	6.41%
		20.00%	277V	7.55%
Power Factor (THD & PF - section 4.3)	ANSI C82.77:2014	0.9	120V	0.994
		0.9	277V	0.926
Allowable CCTs* (K) (Integrating Sphere - Section 4.1)	IES LM-79-2008	7 step	5029±355	4921
		4 step	5029±220	
Minimum CRI (Integrating Sphere - Section 4.1)	IES LM-79-2008 CIE 13.3-1995	≥80		83
Minimum R9 (Integrating Sphere - Section 4.1)	IES LM-79-2008 CIE 13.3-1995	≥0		5
Minimum Rf (Integrating Sphere - Section 4.1)	ANSI/IES TM-30-18	≥70		83
Minimum Rg (Integrating Sphere - Section 4.1)	ANSI/IES TM-30-18	≥89		93
Minimum IES Rcs,h1 (Integrating Sphere - Section 4.1)	ANSI/IES TM-30-18	-12%≤IES Rcs,h1≤+23%		-13%
Zonal Lumen Requirement (0°-60°) (Goniophotometer - Section 4.2)	IES LM-79-2008	≥40%		71.69%
Corrected UGR (X=4H, Y=8H, 70/50/20%) (Goniophotometer - Section 4.2)	CIE 190-2010	<22		22.4
Input Voltage (V)				
(Goniophotometer - Section 4.2)	IES LM-79-2008	Wroست Case		277
(Goniophotometer - Section 4.2)		Non-Wroست Case		120
Input Current (A)				
(Goniophotometer - Section 4.2)	IES LM-79-2008	Wroست Case		0.117
(Goniophotometer - Section 4.2)		Non-Wroست Case		0.242
Power (Input Wattage - W)				
(Goniophotometer - Section 4.2)	IES LM-79-2008	Wroست Case		29.8
(Goniophotometer - Section 4.2)		Non-Wroست Case		28.7

2.0 Test List

Test Item	Test	Test Date	Model Number	Sample No.
1	Integrating Sphere Test	2023/1/3	GUSJR4/30W/5000K	O1
2	Goniophotometer Test	2023/1/3	GUSJR4/30W/5000K	O1
3	THD and PF Test	2023/1/3	GUSJR4/30W/5000K	O1

Remark(If any)

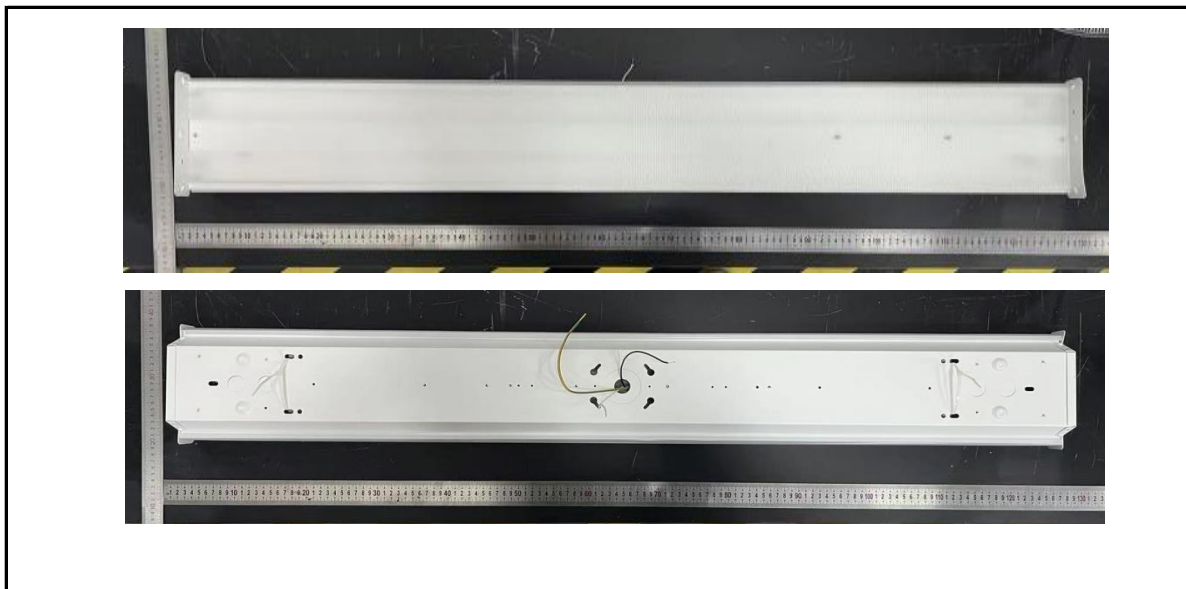
- 1、 This report shall not be used by the client to claim product endorsement by NVLAP, NIST or any agency of the US government.
- 2、 The results reported herein have been performed in accordance with the laboratory's terms of accreditation. This report shall not be reproduced except in full without the written approval of the Laboratory. The results in this report apply to the test sample(s) mentioned above at the time of the testing period only and are not to be used to indicate applicability to other similar products. This report does not imply that the product(s) has met the criteria for certification.

3.0 Production Description

Luminaire Description: GUSJR4/30W/5000K

Electrical Specification: 120V-277V,50/60HZ

Photos of Luminaire Characteristics



4.0 LM-79 Measurement and Test Results

4.1 Integrating Sphere Test

Model No.	GUSJR4/30W/5000K	Sample ID.	O1
Operate time (Min.)	90	Stabilization time (Min.)	45
Temperature (°C)	25.3	Humidity (%RH)	56.0

Test Method

The samples were tested according to the IES LM-79-2008.

Photometric parameters were measured using an integrating sphere, a spectroradiometer and software. The ambient temperature condition inside the sphere was maintained at $25^{\circ}\text{C} \pm 1^{\circ}\text{C}$.

The sample measurements were made using a spectroradiometer connected by a fiber optic cable and detector through the detector port of the integrating sphere.

The voltage of an AC power supply (RMS voltage) or DC power supply (instantaneous voltage) applied to the device under test shall be regulated to within ± 0.2 percent under load.

The sample was measured using 4π geometry and operated at rated voltage and was stabilized before measurement. Chromaticity coordinates, correlated color temperature and color rendering index were calculated from the spectral radiant flux measurements taken at 1 nm intervals over the range of 380 to 780 nm.

Test Result

Voltage (Vac)	Frequency (Hz)	Current (A)	Power (W)	Power Factor
119.98	60	0.239	28.5	0.994
276.98	60	0.115	29.6	0.926

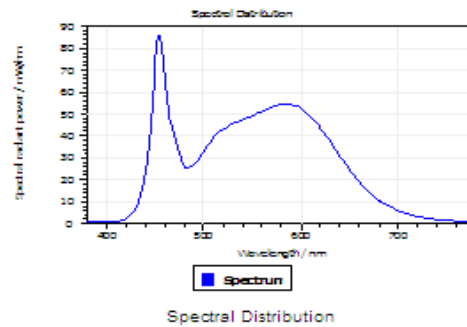
Test Result

CCT (K)	CRI	R9	Duv
4921	83	5	0.004

Rf	Rg	IES Rcs,h1
83	93	-13%

4.1 Integrating Sphere Test

Results

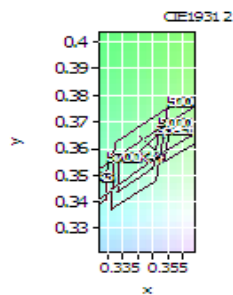


Spectral values

DominantWavelength 570.40 nm
Purity 0.132
PeakWavelength 454.29 nm
Radiant Power 10.49 W
Width50%:

Color Coordinates

Correlated Color Temperat 4921 K
x: 0.3483 u: 0.2095 u': 0.2095
y: 0.3622 v: 0.3268 v': 0.4902
CRI01 80.8 CRI09 5.4
CRI02 90.7 CRI10 77.4
CRI03 95.2 CRI11 77.9
CRI04 78.9 CRI12 56.0
CRI05 80.6 CRI13 83.9
CRI06 86.3 CRI14 97.8
CRI07 85.8 CRI15 74.1
CRI08 64.7 CRI16 69.4
ResultsCRI 82.9



PlankDistance 4.0E-003

4.1 Integrating Sphere Test

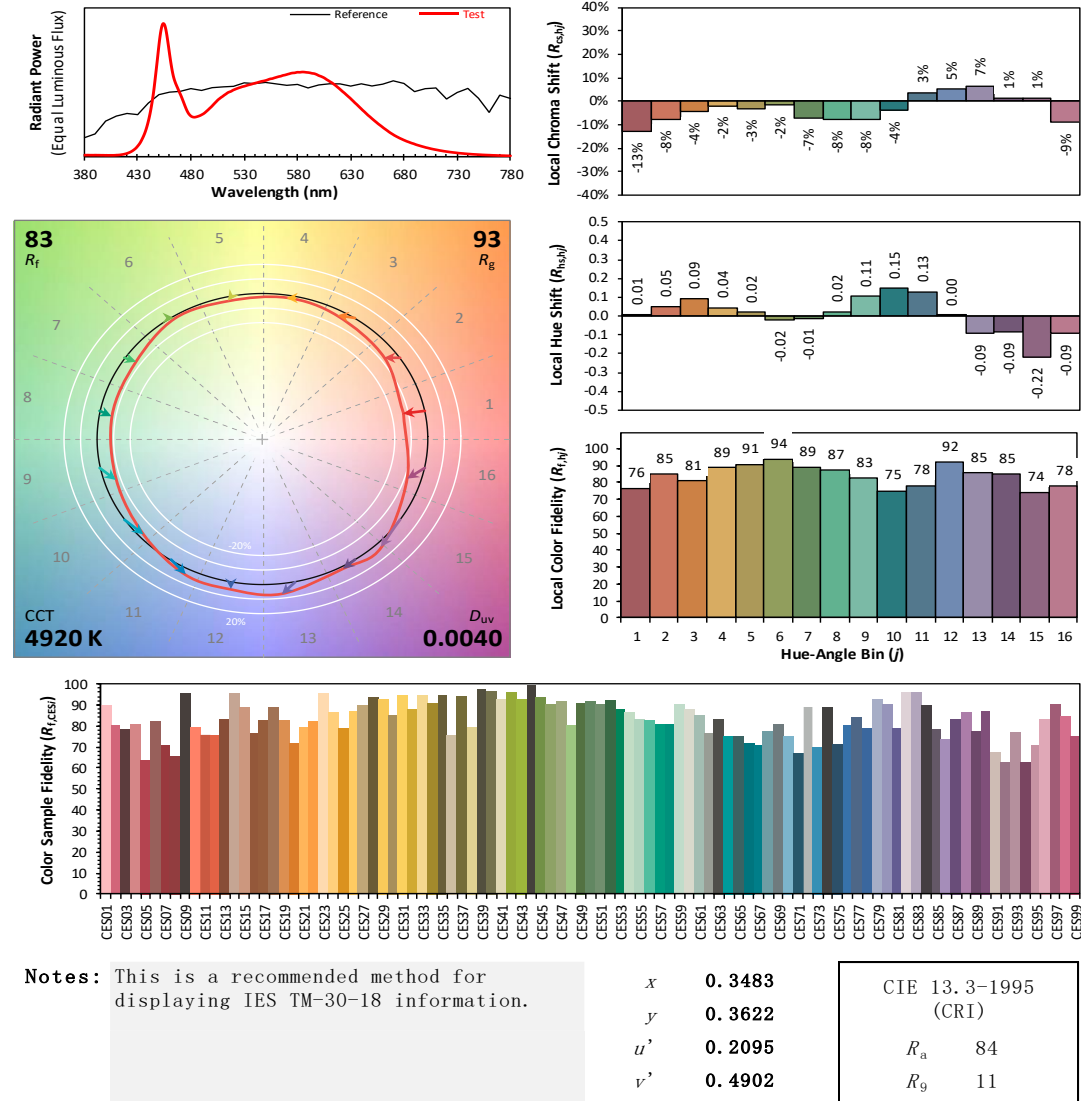
IES TM-30-18 Color Rendition Report

Source: DLF2212110-15a

Manufacturer: RAB Lighting Inc.

Date: 2023/1/3

Model: GUSJR4/30W/5000K



4.0 LM-79 Measurement and Test Results

4.2 Goniophotometer Test

Model No.	GUSJR4/30W/5000K	Sample ID.	O1
Opreate time (Min.)	90	Stabilization time (Min.)	45
Temperature (°C)	25.3	Humidity (%RH)	54.0

Test Method

The samples were tested according to the IES LM-79-2008.

Photometric paramters were measured using a type C goniophotometer and software.

The ambient temperature shall be maintained at $25^{\circ}\text{C} \pm 1^{\circ}\text{C}$, measured at a point not more than 1 m from the sample and at the same height as the sample.

The voltage of an AC power supply (RMS voltage) or DC power supply (instantaneous voltage) applied to the device under test shall be regulated to within ± 0.2 percent under load.

The samples were operated at rated voltage and was stabilized before measurement. Luminous flux, luminaire efficacy, zonal lumen were calculated from the software taken at 0.5° vertical intervals and 10° horizontal intervals.

Test Conditions

Condition	Voltage (Vac)	Frequency (Hz)	Current (A)	Power (W)	Power Factor
WROST CASE	277.02	60	0.117	29.8	0.922
NON-WROST CASE	120.02	60	0.242	28.7	0.990

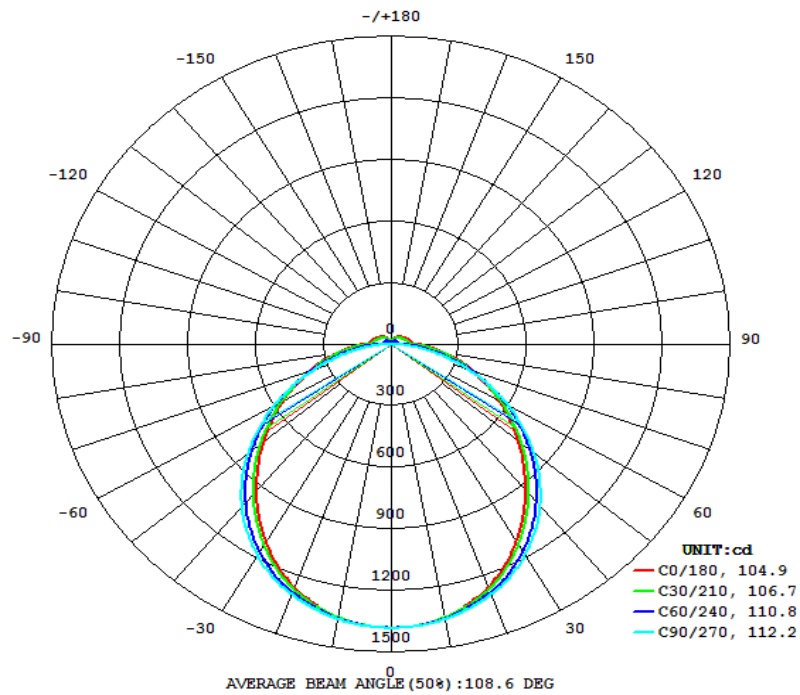
Test Result

Flux (lm)	Field Angle(10%)		Beam Angle(50%)		Luminous Efficacy (lm/W)
	C0-180	C90-270	C0-180	C90-270	
4213	175.1	161.3	104.9	112.2	141.4

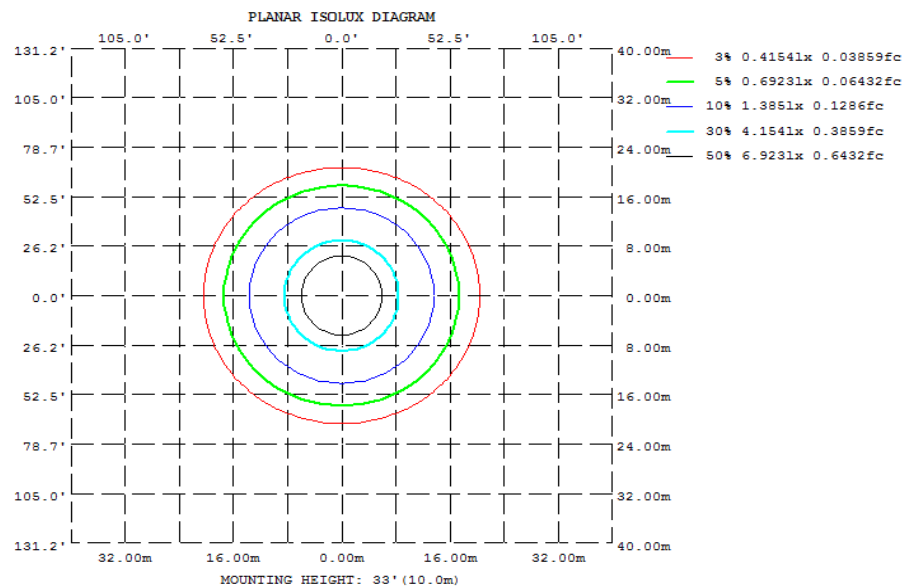
Zonal Lumen Requirement (0° - 60°)	UGR (X=4H, Y=8H, 70/50/20%)	Length(ft)	Lumen/ft
71.69%	22.4	4.00	1053

4.2 Goniophotometer Test

Light Distribution Curve



Isolux Plot



4.2 Goniophotometer Test

Zonal Lumen Summary

γ	C0	C45	C90	C135	C180	C225	C270	C315
10	1351	1354	1360	1354	1351	1354	1360	1354
20	1260	1279	1294	1279	1260	1279	1294	1279
30	1110	1148	1187	1148	1110	1148	1187	1148
40	927.9	975.9	1029	975.9	927.9	975.9	1029	975.9
50	737.6	779.8	827.8	779.8	737.6	779.8	827.8	779.8
60	554.4	578.3	601.3	578.3	554.4	578.3	601.3	578.3
70	386.2	383.4	366.1	383.4	386.2	383.4	366.1	383.4
80	239.9	211.1	150.4	211.1	239.9	211.1	150.4	211.1
90	113.2	77.51	2.227	77.51	113.2	77.51	2.227	77.51
100	96.15	66.60	1.697	66.60	96.15	66.60	1.697	66.60
110	83.42	58.44	4.101	58.44	83.42	58.44	4.101	58.44
120	71.79	50.36	6.040	50.36	71.79	50.36	6.040	50.36
130	60.49	43.41	7.635	43.41	60.49	43.41	7.635	43.41
140	50.43	36.00	9.029	36.00	50.43	36.00	9.029	36.00
150	39.14	27.77	9.493	27.77	39.14	27.77	9.493	27.77
160	27.13	18.96	9.417	18.96	27.13	18.96	9.417	18.96
170	15.62	11.83	8.568	11.83	15.62	11.83	8.568	11.83
180	7.545	9.022	9.292	9.022	7.545	9.022	9.292	9.022
DEG	LUMINOUS INTENSITY:cd							

UGR Table - Corrected

UGR Table - Corrected										
Reflectances										
Ceiling Cavity	70	70	50	50	30	70	70	50	50	30
Walls	50	30	50	30	30	50	30	50	30	30
Floor Cavity	20	20	20	20	20	20	20	20	20	20
Room Size										
X=2H Y=2H	UGR Viewed Crosswise					UGR Viewed Endwise				
3H	17.0	18.5	17.5	19.0	19.5	16.9	18.4	17.4	18.9	19.4
4H	18.7	20.0	19.1	20.5	21.0	19.0	20.3	19.5	20.8	21.3
6H	19.2	20.5	19.7	20.9	21.5	19.9	21.2	20.4	21.7	22.2
8H	19.5	20.7	20.0	21.2	21.8	20.8	22.0	21.3	22.5	23.0
12H	19.6	20.7	20.1	21.3	21.8	21.2	22.3	21.7	22.9	23.4
	19.6	20.7	20.2	21.2	21.8	21.6	22.7	22.2	23.2	23.8
4H 2H	17.6	18.9	18.1	19.4	19.9	17.6	18.8	18.1	19.3	19.9
4H 3H	19.5	20.5	20.0	21.1	21.6	19.8	20.9	20.3	21.4	22.0
4H 4H	20.1	21.1	20.7	21.6	22.2	20.9	21.8	21.4	22.4	23.0
4H 6H	20.6	21.5	21.2	22.0	22.6	21.9	22.8	22.5	23.3	23.9
4H 8H	20.7	21.5	21.3	22.1	22.7	22.4	23.2	23.0	23.8	24.4
4H 12H	20.8	21.5	21.4	22.1	22.7	22.9	23.6	23.5	24.2	24.9
8H 4H	20.5	21.3	21.1	21.9	22.5	21.2	22.0	21.7	22.5	23.1
8H 6H	21.1	21.8	21.7	22.4	23.0	22.3	23.0	22.9	23.6	24.3
8H 8H	21.3	21.9	21.9	22.5	23.2	23.0	23.6	23.6	24.2	24.8
8H 12H	21.4	21.9	22.0	22.5	23.3	23.6	24.2	24.2	24.8	25.5
12H 4H	20.6	21.3	21.2	21.9	22.5	21.2	21.9	21.8	22.5	23.1
12H 6H	21.2	21.8	21.9	22.4	23.1	22.4	23.0	23.0	23.6	24.3
12H 8H	21.5	22.0	22.1	22.6	23.3	23.1	23.6	23.7	24.2	24.9
Maximum UGR = 25.5										

4.2 Goniophotometer Test

ZONAL LUMEN SUMMARY

	Zonal (lm)		Total (lm)	Percent
0-10	130.60	0 - 10	130.60	3.10%
10-20	372.92	0 - 20	503.52	11.95%
20-30	561.43	0 - 30	1064.95	25.28%
30-40	666.84	0 - 40	1731.79	41.11%
40-50	679.91	0 - 50	2411.70	57.25%
50-60	608.31	0 - 60	3020.01	71.69%
60-70	473.02	0 - 70	3493.03	82.91%
70-80	305.06	0 - 80	3798.09	90.16%
80-90	140.23	0 - 90	3938.32	93.48%
90-100	68.22	0 - 100	4006.54	95.10%
100-110	58.20	0 - 110	4064.74	96.48%
110-120	48.04	0 - 120	4112.78	97.63%
120-130	37.74	0 - 130	4150.52	98.52%
130-140	27.85	0 - 140	4178.37	99.18%
140-150	18.64	0 - 150	4197.01	99.62%
150-160	10.46	0 - 160	4207.47	99.87%
160-170	4.37	0 - 170	4211.84	99.98%
170-180	0.99	0 - 180	4212.83	100.00%

4.2 Goniophotometer Test

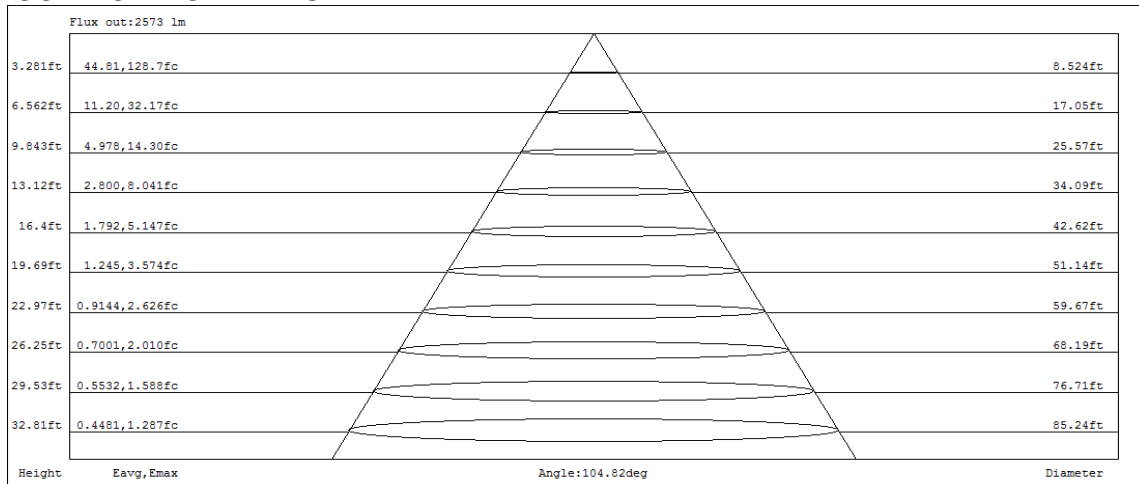
COEFFICIENTS OF UTILIZATION - ZONAL CAVITY METHOD

Coefficients Of Utilization - Zonal Cavity Method

Effective Floor Cavity Reflectance 0.20

RC	80				70				50			30			10			0
Rw	70	50	30	10	70	50	30	10	50	30	10	50	30	10	50	30	10	0
0	117	117	117	117	114	114	114	114	107	107	107	102	102	102	96	96	96	93
1	107	102	97	93	103	99	95	91	93	90	87	88	85	83	83	81	79	77
2	97	88	81	75	93	86	79	74	81	76	71	77	72	69	73	69	66	64
3	88	77	69	62	85	75	68	61	71	65	60	68	62	58	64	60	56	53
4	81	69	60	53	78	67	59	52	63	56	51	60	54	49	57	52	48	46
5	74	61	52	45	72	60	51	45	57	49	44	54	48	43	52	46	42	39
6	68	55	46	40	66	54	45	39	51	44	38	49	42	38	47	41	37	34
7	63	50	41	35	61	49	41	35	47	39	34	45	38	33	43	37	33	30
8	59	46	37	31	57	45	37	31	43	35	30	41	34	30	39	34	29	27
9	55	42	34	28	53	41	33	28	39	32	27	38	31	27	36	31	26	24
10	52	39	31	25	50	38	30	25	36	30	25	35	29	24	34	28	24	22

CONE OF LIGHT DIAGRAM



4.0 LM-79 Measurement and Test Results

4.3 THD and PF Test

Model No.	GUSJR4/30W/5000 K	Sample ID.	O1
Temperature (°C)	25.3	Humidity (%RH)	56.0

Test Method

The samples were tested according to the ANSI C82.77:2002.
 The total harmonic distortion shall be measured to the 40th order.
 The ambient temperature condition was maintained at 25° C ± 1° C. The sample measurements were made using a digital power meter and power supply. The sample was operated at rated voltage and was stabilized before measurement. The total harmonic distortion were calculated.

Test Results

Voltage (Vac)	Frequency (Hz)	Current (A)	Power (W)	Power Factor	THD
119.98	60	0.239	28.5	0.994	6.41%
276.98	60	0.115	29.6	0.926	7.55%

5.0 Equipment Information

Test Equipment			
Equipment ID	Equipment Name	Last Calibration Date	Calibration Due Date
DLF107	Integrating Sphere System	2022/12/26	2023/12/25
DLF108	Auxiliary Lamp	2022/12/26	2023/12/25
DLF122	Measurement Standard Lamp Standard Lamp Type: 220 V, 0.4720 A, Tungsten, Omni-derectional	2022/12/26	2023/12/25
DLF116	AC Power Source	2022/12/26	2023/12/25
DLF113	Power Meter	2022/12/26	2023/12/25
DLF112	Temperature Recorder	2022/12/26	2023/12/25
DLF114	Temperature & Humidity Datalogger	2022/12/26	2023/12/25
DLF101	Goniophotometer	2022/12/26	2023/12/25
DLF125	Standard Lamp Standard Lamp Type: 76.58 V, 6.7875 A, Tungsten, Omni-derectional	2022/12/26	2023/12/25
DLF104	AC Power Source	2022/12/26	2023/12/25
DLF507	DC Power Source	2022/12/26	2023/12/25
DLF102	Power Meter	2022/12/26	2023/12/25
DLF111	Temperature & Humidity Datalogger	2022/12/26	2023/12/25
DLF119	Power Meter	2022/12/26	2023/12/25
DLF031	Temperature data logger	2022/12/26	2023/12/25
DLF022	Digital power meter	2022/12/26	2023/12/25
DLF003	Temperature & Humidity Datalogger	2022/12/26	2023/12/25

***** End of Test Report*****