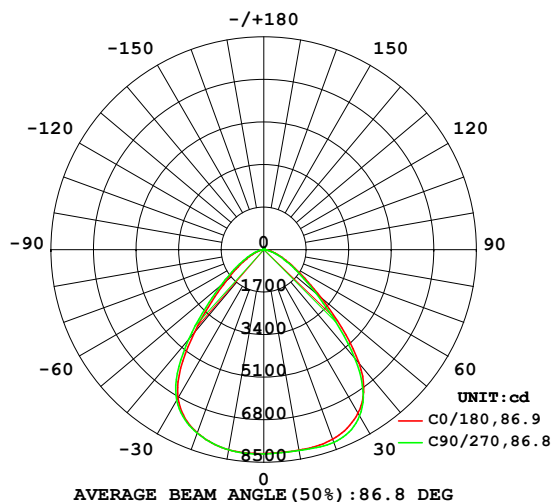


LUMINAIRE PHOTOMETRIC TEST REPORT

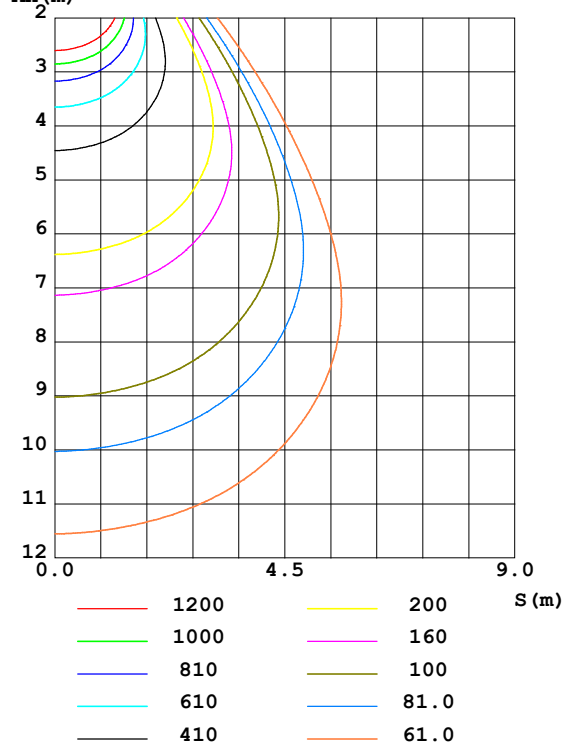
Test:U:122.2V I:0.8006A P:97.56W PF:0.9972 Freq:59.99Hz Lamp Flux:16254.9x1 lm		
NAME: H17-100W-4K	TYPE:	WEIGHT:
SPEC.:	DIM.:	SERIAL No.:
MFR.: RAB LIGHTING INC	SUR.:0.23m	Shielding Angle:

DATA OF LAMP		PHOTOMETRIC DATA Eff: 166.61 lm/W			
MODEL		I _{max} (cd)	8200	S/MH(C0/180)	1.17
NOMINAL POWER(W)	100	LOR(%)	100.0	S/MH(C90/270)	1.20
RATED VOLTAGE(V)	120-277	TOTAL FLUX(lm)	16255	□ UP,DN(C0-180)	0.5,52.7
NOMINAL FLUX(lm)	16254.9	CIE CLASS	DIRECT	□ UP,DN(C180-360)	0.5,46.3
LAMPS INSIDE	1	□ up(%)	1.0	CIBSE SHR NOM	1.25
TEST VOLTAGE(V)	120	□ down(%)	99.0	CIBSE SHR MAX	1.30

LUMINOUS INTENSITY DISTRIBUTION DIAGRAM



C0 PLANE ISOLUX DIAGRAM (UNIT:lx)



C Range: 0 - 360DEG
C Interval: 45.0DEG
Test Speed: HIGH
Temperature:25.1DEG
Operators:Marvin Ma
Test Date:2022-08-30

□ Range: 0 - 180DEG
□ Interval: 1.0DEG
Test System:EVERFINE GO-2000A_V1 SYSTEM V2.0.364
Humidity:56%
Test Distance:6.500m [K=1.0000]
Remarks:

ZONAL FLUX DIAGRAM

ZONAL FLUX DIAGRAM:

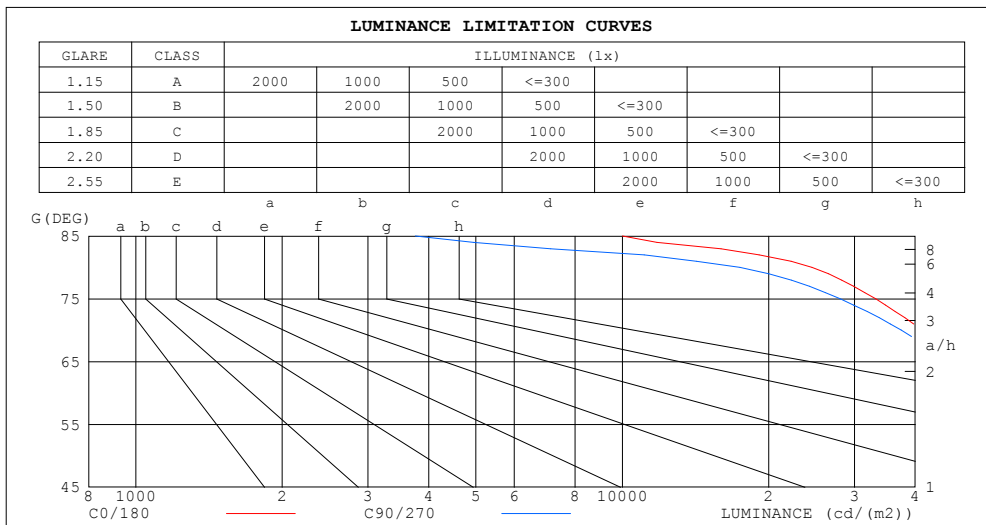
mm	C0	C45	C90	C135	C180	C225	C270	C315	mm	□ zone	□ total	%lum, lamp
10	8135	8119	8148	8178	8118	8106	8124	8157	0- 10	777.8	777.8	4.79,4.79
20	8060	8185	8191	8024	7788	7748	7797	7900	10- 20	2286	3063	18.8,18.8
30	7538	7768	7662	7281	6852	6797	6959	7192	20- 30	3545	6608	40.7,40.7
40	5932	6012	5662	5097	4312	4343	4658	5145	30- 40	3963	10571	65,65
50	3008	3049	2743	2439	1990	2055	2256	2537	40- 50	2863	13434	82.6,82.6
60	1362	1389	1256	1116	901.3	945.5	1049	1178	50- 60	1554	14988	92.2,92.2
70	589.2	602.6	531.8	470.0	374.5	399.7	446.1	508.0	60- 70	773.0	15761	97,97
80	176.8	127.1	125.7	84.07	82.58	72.42	116.5	100.8	70- 80	302.4	16063	98.8,98.8
90	6.461	7.040	5.452	6.737	5.752	7.524	5.988	7.532	80- 90	32.67	16096	99,99
100	6.870	7.021	7.558	8.076	8.821	8.757	8.201	7.494	90-100	7.422	16103	99.1,99.1
110	12.13	12.06	13.14	13.81	15.27	15.01	14.43	13.06	100-110	11.13	16114	99.1,99.1
120	19.60	19.10	20.82	21.28	23.81	23.24	22.92	20.79	110-120	17.19	16132	99.2,99.2
130	28.46	27.28	29.67	29.59	33.51	32.33	32.61	29.74	120-130	23.12	16155	99.4,99.4
140	36.84	36.26	37.52	38.46	42.45	41.71	41.82	39.29	130-140	26.91	16182	99.5,99.5
150	44.09	44.41	44.70	46.33	49.98	50.48	49.14	48.32	140-150	27.13	16209	99.7,99.7
160	52.13	51.86	52.97	53.70	57.81	57.51	56.91	55.76	150-160	23.46	16232	99.9,99.9
170	60.58	59.92	61.23	61.38	64.28	63.88	63.88	62.69	160-170	16.53	16249	100,100
180	66.18	65.50	66.26	65.78	66.14	65.58	66.22	65.86	170-180	6.100	16255	100,100
DEG	LUMINOUS INTENSITY:cd									UNIT:lm		

C Range: 0 - 360DEG
 C Interval: 45.0DEG
 Test Speed: HIGH
 Temperature:25.1DEG
 Operators:Marvin Ma
 Test Date:2022-08-30

□ Range: 0 - 180DEG
 □ Interval: 1.0DEG
 Test System:EVERFINE GO-2000A_V1 SYSTEM V2.0.364
 Humidity:56%
 Test Distance:6.500m [K=1.0000]
 Remarks:

LUMINANCE LIMITATION CURVES

Test:U:122.2V I:0.8006A P:97.56W PF:0.9972 Freq:59.99Hz Lamp Flux:16254.9x1 lm		
NAME: H17-100W-4K	TYPE:	WEIGHT:
SPEC.:	DIM.:	SERIAL No.:
MFR.: RAB LIGHTING INC	SUR.:0.23m	Shielding Angle:



LUMINANCE cd/(m2)		
G (DEG)	C0/180	C90/270
85	10004	3757
80	24540	17438
75	33171	28026
70	41513	37466
65	51827	47672
60	65633	60551
55	84571	77989
50	112761	102825
45	150163	138221

C Range: 0 - 360DEG
C Interval: 45.0DEG
Test Speed: HIGH
Temperature:25.1DEG
Operators:Marvin Ma
Test Date:2022-08-30

☐ Range: 0 - 180DEG
☐ Interval: 1.0DEG
Test System:EVERFINE GO-2000A_V1 SYSTEM V2.0.364
Humidity:56%
Test Distance:6.500m [K=1.0000]
Remarks:

WEC AND CCEC

Test:U:122.2V I:0.8006A P:97.56W PF:0.9972 Freq:59.99Hz Lamp Flux:16254.9x1 lm					
NAME: H17-100W-4K			TYPE:		WEIGHT:
SPEC.:			DIM.:		SERIAL No.:
MFR.: RAB LIGHTING INC			SUR.:0.23m		Shielding Angle:

<input type="checkbox"/> cc	80%			70%			50%			30%			10%			0
<input type="checkbox"/> w	50%	30%	10%	50%	30%	10%	50%	30%	10%	50%	30%	10%	50%	30%	10%	0
<input type="checkbox"/> fc	20%			20%			20%			20%			20%			0
RCR	RCR:Room Cavity Ratio						Wall Exitance Coefficients (WEC)									
0.0																
1.0	.234	.133	.042	.227	.130	.041	.214	.123	.039	.201	.116	.037	.190	.110	.035	
2.0	.228	.125	.038	.222	.122	.038	.210	.117	.036	.199	.112	.035	.189	.107	.034	
3.0	.217	.115	.035	.212	.113	.034	.201	.109	.033	.192	.105	.032	.183	.101	.031	
4.0	.205	.107	.031	.200	.105	.031	.191	.102	.030	.183	.098	.030	.175	.095	.029	
5.0	.194	.099	.029	.189	.097	.028	.181	.094	.028	.174	.092	.027	.167	.089	.027	
6.0	.183	.092	.026	.179	.090	.026	.172	.088	.026	.165	.086	.025	.159	.084	.025	
7.0	.173	.085	.024	.169	.084	.024	.163	.082	.024	.157	.081	.023	.152	.079	.023	
8.0	.164	.080	.022	.161	.079	.022	.155	.077	.022	.149	.076	.022	.144	.074	.022	
9.0	.155	.075	.021	.152	.074	.021	.147	.073	.021	.142	.071	.020	.138	.070	.020	
10.0	.147	.071	.020	.145	.070	.020	.140	.069	.019	.136	.067	.019	.132	.066	.019	

<input type="checkbox"/> cc	80%			70%			50%			30%			10%			0
<input type="checkbox"/> w	50%	30%	10%	50%	30%	10%	50%	30%	10%	50%	30%	10%	50%	30%	10%	0
<input type="checkbox"/> fc	20%			20%			20%			20%			20%			0
RCR	RCR:Room Cavity Ratio						Ceiling Cavity Exitance Coefficients(CCEC)									
0.0	.198	.198	.198	.169	.169	.169	.115	.115	.115	.066	.066	.066	.021	.021	.021	
1.0	.183	.164	.148	.156	.141	.127	.107	.097	.088	.062	.056	.051	.020	.018	.017	
2.0	.171	.140	.113	.147	.120	.098	.101	.083	.068	.058	.048	.040	.019	.016	.013	
3.0	.162	.122	.089	.139	.105	.078	.095	.073	.054	.055	.043	.032	.018	.014	.010	
4.0	.154	.108	.073	.132	.093	.063	.091	.065	.044	.052	.038	.026	.017	.012	.009	
5.0	.146	.097	.060	.126	.084	.052	.087	.059	.037	.050	.034	.022	.016	.011	.007	
6.0	.140	.088	.051	.120	.076	.045	.083	.053	.032	.048	.031	.019	.015	.010	.006	
7.0	.133	.081	.044	.115	.070	.039	.079	.049	.027	.046	.029	.016	.015	.010	.005	
8.0	.128	.075	.039	.110	.065	.034	.076	.046	.024	.044	.027	.014	.014	.009	.005	
9.0	.122	.070	.035	.105	.061	.031	.073	.043	.022	.042	.025	.013	.014	.008	.004	
10.0	.117	.066	.032	.101	.057	.028	.070	.040	.020	.041	.024	.012	.013	.008	.004	

C Range: 0 - 360DEG
 C Interval: 45.0DEG
 Test Speed: HIGH
 Temperature:25.1DEG
 Operators:Marvin Ma
 Test Date:2022-08-30

☐ Range: 0 - 180DEG
☐ Interval: 1.0DEG
 Test System:EVERFINE GO-2000A_V1 SYSTEM V2.0.364
 Humidity:56%
 Test Distance:6.500m [K=1.0000]
 Remarks:

UGR(Unified Glare Rating) Table

Test:U:122.2V I:0.8006A P:97.56W PF:0.9972 Freq:59.99Hz Lamp Flux:16254.9x1 lm										
NAME: H17-100W-4K					TYPE:			WEIGHT:		
SPEC.:					DIM.:			SERIAL No.:		
MFR.: RAB LIGHTING INC					SUR.:0.23m			Shielding Angle:		
ceiling/cavity	0.7	0.7	0.5	0.5	0.3	0.7	0.7	0.5	0.5	0.3
walls	0.5	0.3	0.5	0.3	0.3	0.5	0.3	0.5	0.3	0.3
working plane	0.2	0.2	0.2	0.2	0.2	0.2	0.2	0.2	0.2	0.2
Room dimensions	Viewed crosswise					Viewed endwise				
x = 2H y = 2H	28.1	29.4	28.4	29.6	29.8	27.9	29.1	28.1	29.3	29.6
3H	28.5	29.6	28.7	29.8	30.1	28.2	29.3	28.5	29.6	29.8
4H	28.5	29.6	28.9	29.9	30.2	28.2	29.3	28.5	29.6	29.8
6H	28.6	29.6	28.9	29.9	30.1	28.2	29.2	28.6	29.5	29.8
8H	28.5	29.5	28.9	29.8	30.1	28.2	29.2	28.5	29.5	29.7
12H	28.5	29.4	28.9	29.7	30.0	28.1	29.1	28.5	29.4	29.7
4H 2H	28.2	29.3	28.5	29.6	29.8	28.0	29.1	28.3	29.3	29.6
3H	28.7	29.6	29.0	29.9	30.2	28.4	29.4	28.8	29.7	30.0
4H	28.8	29.7	29.2	30.0	30.4	28.6	29.4	28.9	29.7	30.1
6H	28.9	29.7	29.3	30.0	30.4	28.6	29.3	29.0	29.7	30.1
8H	28.9	29.6	29.3	30.0	30.4	28.5	29.2	29.0	29.6	30.0
12H	28.9	29.5	29.3	29.9	30.3	28.5	29.1	28.9	29.5	29.9
8H 4H	28.8	29.5	29.2	29.9	30.3	28.6	29.2	29.0	29.6	30.0
6H	28.9	29.5	29.4	29.9	30.4	28.6	29.2	29.1	29.6	30.0
8H	28.9	29.4	29.4	29.9	30.3	28.6	29.1	29.1	29.5	30.0
12H	28.9	29.3	29.4	29.8	30.3	28.5	29.0	29.0	29.4	29.9
12H 4H	28.8	29.4	29.2	29.8	30.2	28.5	29.1	28.9	29.5	30.0
6H	28.9	29.4	29.4	29.8	30.3	28.6	29.1	29.0	29.5	30.0
8H	28.9	29.3	29.4	29.8	30.3	28.5	29.0	29.0	29.4	29.9
Variations with the observer position at spacings:										
S = 1.0H	+ 1.0 / - 1.4					+ 1.1 / - 1.5				
1.5H	+ 0.9 / - 0.9					+ 1.0 / - 1.0				
2.0H	+ 2.2 / - 1.7					+ 2.1 / - 1.7				

CIE Pub.117, 16255 lm Total Lamp Luminous Flux Corrected ($8\log(F/F_0) = 9.7$)

C Range: 0 - 360DEG
 C Interval: 45.0DEG
 Test Speed: HIGH
 Temperature:25.1DEG
 Operators:Marvin Ma
 Test Date:2022-08-30

☐ Range: 0 - 180DEG
☐ Interval: 1.0DEG
 Test System:EVERFINE GO-2000A_V1 SYSTEM V2.0.364
 Humidity:56%
 Test Distance:6.500m [K=1.0000]
 Remarks:

UTILIZATION FACTORS TABLE

Test:U:122.2V I:0.8006A P:97.56W PF:0.9972 Freq:59.99Hz Lamp Flux:16254.9x1 lm		
NAME: H17-100W-4K	TYPE:	WEIGHT:
SPEC.:	DIM.:	SERIAL No.:
MFR.: RAB LIGHTING INC	SUR.:0.23m	Shielding Angle:

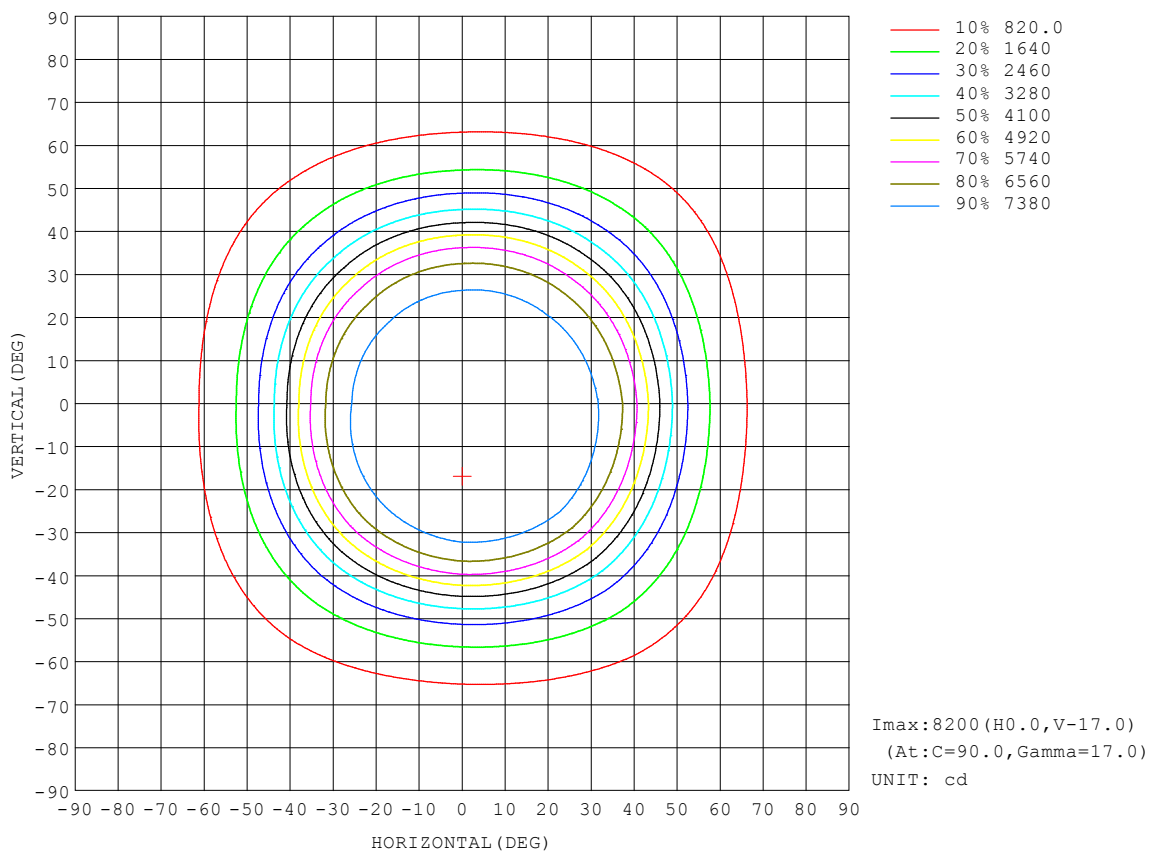
REFLECTANCE										
Ceiling	0.8	0.8	0.8	0.7	0.7	0.7	0.5	0.5	0.5	0
Walls	0.7	0.5	0.3	0.7	0.5	0.3	0.7	0.5	0.3	0
Working plane	0.2	0.2	0.2	0.2	0.2	0.2	0.2	0.2	0.2	0
ROOM INDEX	UTILIZATION FACTORS (PERCENT) $k(RI) \times RCR = 5$									
$k = 0.60$	69	60	54	69	60	54	68	59	54	49
0.80	79	70	64	78	70	64	77	69	64	58
1.00	87	78	73	86	78	72	84	78	72	66
1.25	93	85	79	91	84	79	89	83	78	72
1.50	97	89	84	95	89	84	93	87	83	76
2.00	102	96	91	100	94	90	97	92	89	82
2.50	105	99	95	103	98	94	99	95	92	84
3.00	107	102	98	105	101	97	101	98	95	87
4.00	110	106	102	108	104	101	104	101	98	90
5.00	112	108	105	109	106	104	105	103	100	92
ROOM INDEX	UF (total)									Direct
According to DIN EN 13032-2 2004			Suspended					SHRNOM = 1.25		

C Range: 0 - 360DEG
 C Interval: 45.0DEG
 Test Speed: HIGH
 Temperature: 25.1DEG
 Operators: Marvin Ma
 Test Date: 2022-08-30

☐ Range: 0 - 180DEG
☐ Interval: 1.0DEG
 Test System: EVERFINE GO-2000A_V1 SYSTEM V2.0.364
 Humidity: 56%
 Test Distance: 6.500m [K=1.0000]
 Remarks:

ISOCANDELA DIAGRAM

Test:U:122.2V I:0.8006A P:97.56W PF:0.9972 Freq:59.99Hz Lamp Flux:16254.9x1 lm		
NAME: H17-100W-4K	TYPE:	WEIGHT:
SPEC.:	DIM.:	SERIAL No.:
MFR.: RAB LIGHTING INC	SUR.:0.23m	Shielding Angle:

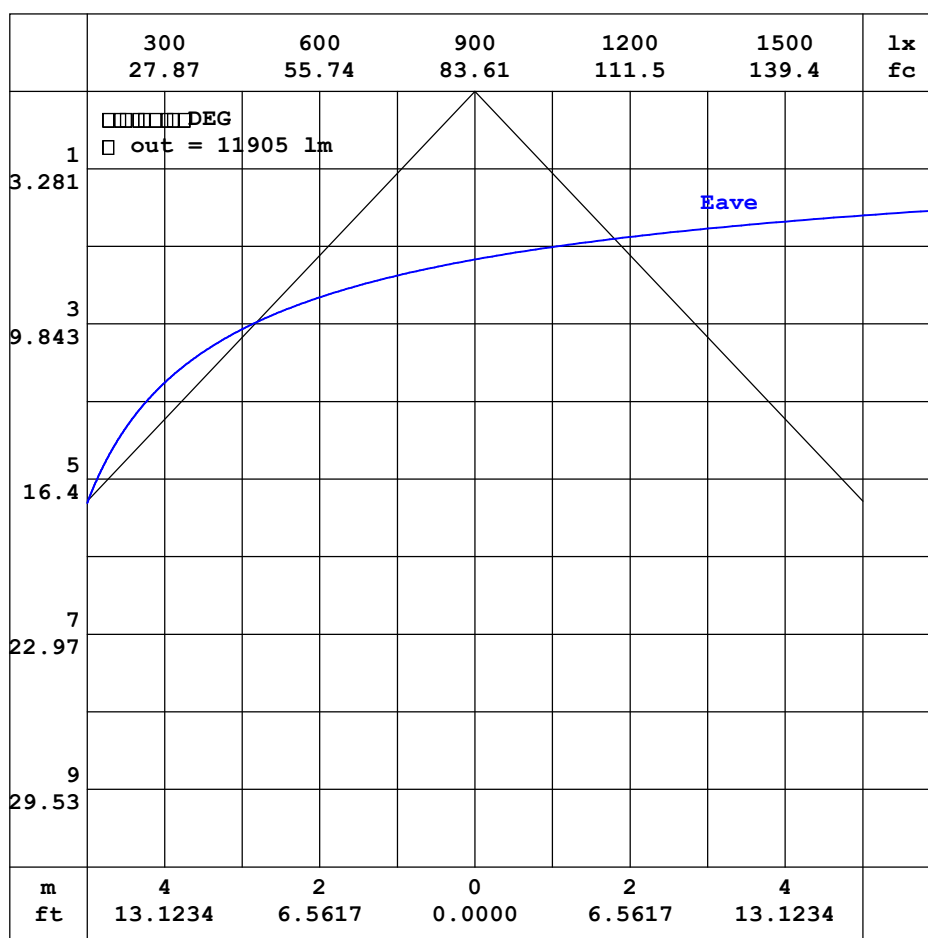


C Range: 0 - 360DEG
C Interval: 45.0DEG
Test Speed: HIGH
Temperature:25.1DEG
Operators:Marvin Ma
Test Date:2022-08-30

☐ Range: 0 - 180DEG
☐ Interval: 1.0DEG
Test System:EVERFINE GO-2000A_V1 SYSTEM V2.0.364
Humidity:56%
Test Distance:6.500m [K=1.0000]
Remarks:

AAI CURVES

Test:U:122.2V I:0.8006A P:97.56W PF:0.9972 Freq:59.99Hz Lamp Flux:16254.9x1 lm		
NAME: H17-100W-4K	TYPE:	WEIGHT:
SPEC.:	DIM.:	SERIAL No.:
MFR.: RAB LIGHTING INC	SUR.:0.23m	Shielding Angle:

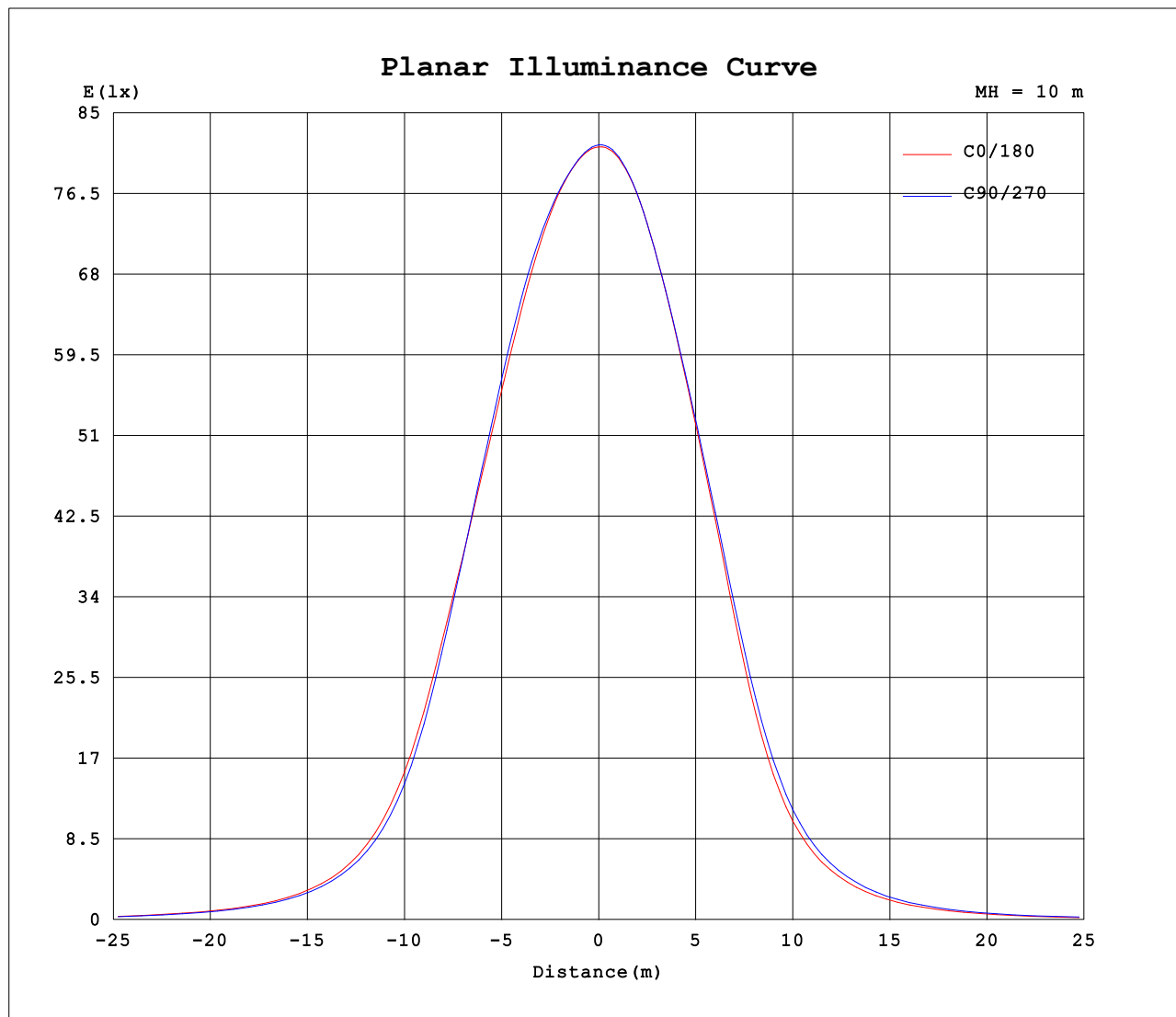


Note: The Curves indicate the illuminated area and the average illumination when the luminaire is at different distance.

C Range: 0 - 360DEG
 C Interval: 45.0DEG
 Test Speed: HIGH
 Temperature: 25.1DEG
 Operators: Marvin Ma
 Test Date: 2022-08-30

☐ Range: 0 - 180DEG
☐ Interval: 1.0DEG
 Test System: EVERFINE GO-2000A_V1 SYSTEM V2.0.364
 Humidity: 56%
 Test Distance: 6.500m [K=1.0000]
 Remarks:

Planar Illuminance Curve



C Range: 0 - 360DEG
C Interval: 45.0DEG
Test Speed: HIGH
Temperature: 25.1DEG
Operators: Marvin Ma
Test Date: 2022-08-30

☐ Range: 0 - 180DEG
☐ Interval: 1.0DEG
Test System: EVERFINE GO-2000A_V1 SYSTEM V2.0.364
Humidity: 56%
Test Distance: 6.500m [K=1.0000]
Remarks:

LUMINOUS DISTRIBUTION INTENSITY DATA

Test:U:122.2V I:0.8006A P:97.56W PF:0.9972 Freq:59.99Hz Lamp Flux:16254.9x1 lm		
NAME: H17-100W-4K	TYPE:	WEIGHT:
SPEC.:	DIM.:	SERIAL No.:
MFR.: RAB LIGHTING INC	SUR.:0.23m	Shielding Angle:

Table--1

UNIT: cd

C (DEG) □ (DEG)	0	45	90	135	180	225	270	315										
0	8143	8152	8162	8176	8143	8152	8162	8176										
5	8133	8122	8141	8173	8153	8161	8170	8179										
10	8135	8119	8148	8178	8118	8106	8124	8157										
15	8131	8159	8189	8147	8001	7969	7999	8073										
20	8060	8185	8191	8024	7788	7748	7797	7900										
25	7876	8087	8048	7755	7440	7395	7488	7635										
30	7538	7768	7662	7281	6852	6797	6959	7192										
35	6957	7141	6927	6467	5795	5751	6029	6422										
40	5932	6012	5662	5097	4312	4343	4658	5145										
45	4407	4445	4056	3596	2947	3011	3288	3711										
50	3008	3049	2743	2439	1990	2055	2256	2537										
55	2013	2065	1856	1648	1344	1408	1548	1735										
60	1362	1389	1256	1116	901	946	1049	1178										
65	909	928	836	741	594	624	695	785										
70	589	603	532	470	375	400	446	508										
75	356	348	301	258	207	225	261	290										
80	177	127	126	84.1	82.6	72.4	116	101										
85	36.2	13.8	13.6	9.63	7.86	10.2	16.9	13.7										
90	6.46	7.04	5.45	6.74	5.75	7.52	5.99	7.53										
95	6.00	6.84	5.75	6.84	6.48	7.35	6.30	7.29										
100	6.87	7.02	7.56	8.08	8.82	8.76	8.20	7.49										
105	9.19	9.24	10.0	10.7	11.8	11.6	11.0	9.98										
110	12.1	12.1	13.1	13.8	15.3	15.0	14.4	13.1										
115	15.6	15.4	16.8	17.3	19.3	18.9	18.4	16.6										
120	19.6	19.1	20.8	21.3	23.8	23.2	22.9	20.8										
125	23.9	23.1	25.2	25.4	28.5	27.7	27.7	25.1										
130	28.5	27.3	29.7	29.6	33.5	32.3	32.6	29.7										
135	32.9	31.5	33.7	33.8	38.3	36.9	37.5	34.4										
140	36.8	36.3	37.5	38.5	42.5	41.7	41.8	39.3										
145	40.5	40.7	41.1	42.8	46.2	46.6	45.5	43.9										
150	44.1	44.4	44.7	46.3	50.0	50.5	49.1	48.3										
155	47.9	48.0	48.6	49.8	53.8	54.0	52.9	51.9										
160	52.1	51.9	53.0	53.7	57.8	57.5	56.9	55.8										
165	56.6	56.0	57.3	57.7	61.5	61.2	60.8	59.5										
170	60.6	59.9	61.2	61.4	64.3	63.9	63.9	62.7										
175	64.0	63.2	64.4	64.2	65.9	65.4	65.8	65.0										
180	66.2	65.5	66.3	65.8	66.1	65.6	66.2	65.9										

C Range: 0 - 360DEG
 C Interval: 45.0DEG
 Test Speed: HIGH
 Temperature:25.1DEG
 Operators:Marvin Ma
 Test Date:2022-08-30

□ Range: 0 - 180DEG
 □ Interval: 1.0DEG
 Test System:EVERFINE GO-2000A_V1 SYSTEM V2.0.364
 Humidity:56%
 Test Distance:6.500m [K=1.0000]
 Remarks: