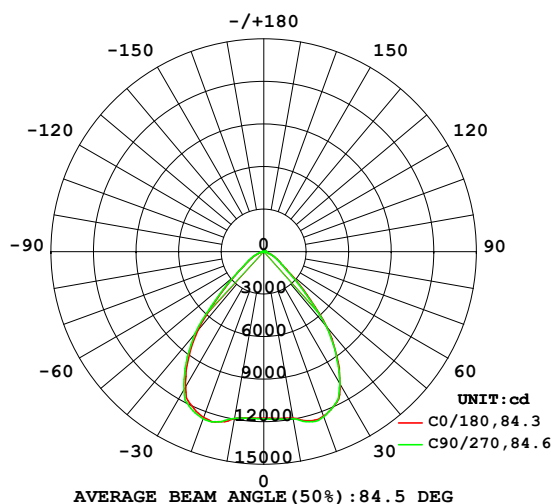


## LUMINAIRE PHOTOMETRIC TEST REPORT

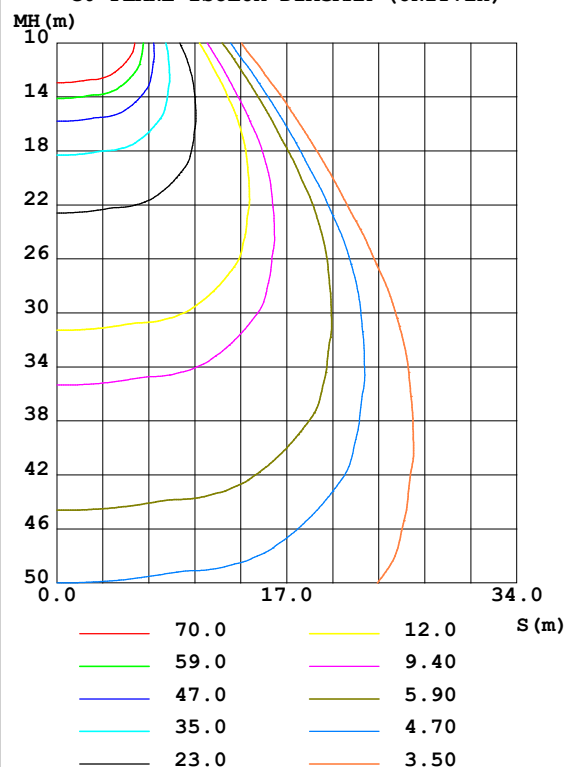
Test:U:120.6V I:1.284A P:154.5W PF:0.9979 Freq:59.98Hz Lamp Flux:22492x1 lm		
NAME: H17XL-RPC-150W-3K	TYPE:	WEIGHT:
SPEC.:	DIM.:	SERIAL No.:
MFR.: RAB LIGHTING INC	SUR.:0.29*0.29m	Shielding Angle:

DATA OF LAMP		PHOTOMETRIC DATA Eff: 145.54 lm/W			
MODEL		I <sub>max</sub> (cd)	12573	S/MH(C0/180)	1.23
NOMINAL POWER(W)	150	LOR(%)	100.0	S/MH(C90/270)	1.24
RATED VOLTAGE(V)	120	TOTAL FLUX(lm)	22492	□ UP,DN(C0-180)	1.1,48.0
NOMINAL FLUX(lm)	22492	CIE CLASS	DIRECT	□ UP,DN(C180-360)	1.0,49.9
LAMPS INSIDE	1	□ up(%)	2.1	CIBSE SHR NOM	1.25
TEST VOLTAGE(V)	120	□ down(%)	97.9	CIBSE SHR MAX	1.25

LUMINOUS INTENSITY DISTRIBUTION DIAGRAM



C0 PLANE ISOLUX DIAGRAM (UNIT:lx)



C Range: 0 - 360DEG  
C Interval: 45.0DEG  
Test Speed: HIGH  
Temperature:25.1DEG  
Operators:Marvin Ma  
Test Date:2022-08-31

□ Range: 0 - 180DEG  
□ Interval: 1.0DEG  
Test System:EVERFINE GO-2000A\_V1 SYSTEM V2.0.364  
Humidity:56%  
Test Distance:6.500m [K=1.0000]  
Remarks:

## ZONAL FLUX DIAGRAM

## ZONAL FLUX DIAGRAM:

°	C0	C45	C90	C135	C180	C225	C270	C315	°	□ zone	□ total	%lum, lamp
10	1192	1196	1198	1198	1194	1191	1194	1200	0- 10	1132	1132	5.03,5.03
20	1234	1233	1239	1245	1245	1252	1253	1240	10- 20	3503	4635	20.6,20.6
30	1078	1070	1076	1101	1104	1140	1124	1081	20- 30	5493	10129	45,45
40	689.2	663.0	681.7	723.3	720.1	772.3	756.4	691.6	30- 40	5698	15826	70.4,70.4
50	254.6	235.2	239.6	265.0	270.1	294.9	288.1	252.2	40- 50	3525	19351	86,86
60	111.9	105.1	106.7	114.0	111.3	124.3	120.5	113.9	50- 60	1503	20855	92.7,92.7
70	39.98	36.87	38.70	42.53	40.84	47.72	46.12	40.36	60- 70	756.8	21612	96.1,96.1
80	16.90	15.80	16.26	17.65	17.24	19.39	18.78	17.58	70- 80	283.1	21895	97.3,97.3
90	6.594	6.055	6.358	6.869	6.530	6.643	6.778	6.656	80- 90	124.3	22019	97.9,97.9
100	5.082	5.141	5.133	5.004	4.899	4.883	4.917	5.002	90-100	57.78	22077	98.2,98.2
110	6.114	6.314	6.289	6.131	6.147	6.175	6.034	6.270	100-110	57.58	22134	98.4,98.4
120	8.373	8.727	8.451	8.472	7.691	7.867	7.893	8.613	110-120	70.99	22205	98.7,98.7
130	8.533	8.874	8.299	8.425	7.810	7.921	7.929	8.282	120-130	75.77	22281	99.1,99.1
140	9.048	9.210	8.987	8.961	8.979	8.869	8.937	9.054	130-140	65.99	22347	99.4,99.4
150	9.535	9.546	9.565	9.367	9.546	9.376	9.499	9.599	140-150	58.37	22406	99.6,99.6
160	10.36	10.41	10.47	10.18	10.38	10.25	10.29	10.38	150-160	45.45	22451	99.8,99.8
170	11.08	10.88	11.20	10.85	11.17	10.99	11.14	10.66	160-170	30.43	22481	100,100
180	11.32	10.80	11.25	10.82	11.31	10.81	11.24	10.82	170-180	10.49	22492	100,100
DEG	LUMINOUS INTENSITY:×10cd									UNIT:lm		

Conical surface Flux(90deg): 17955 lm

%lum = 79.8%

%lamp = 79.8%

Conical surface Flux(120deg): 20855 lm

%lum = 92.7%

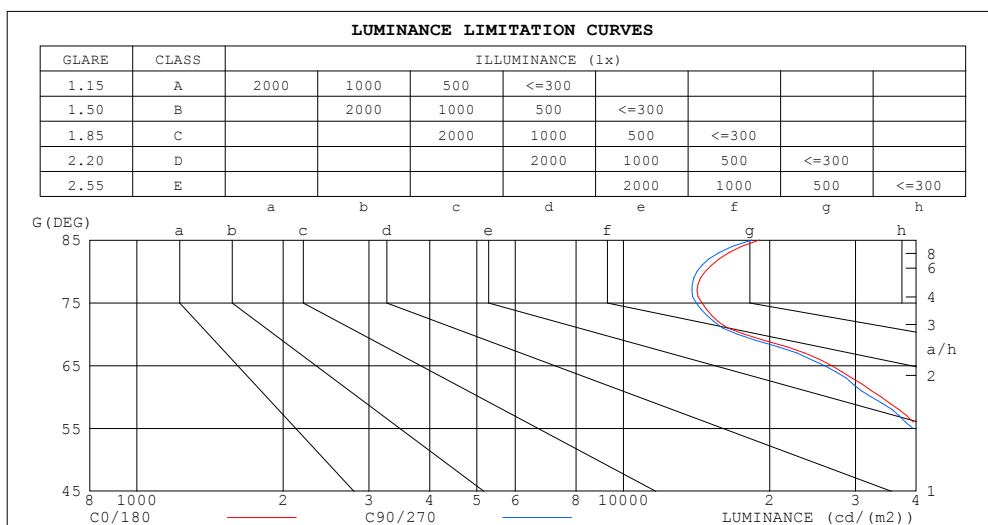
%lamp = 92.7%

C Range: 0 - 360DEG  
 C Interval: 45.0DEG  
 Test Speed: HIGH  
 Temperature:25.1DEG  
 Operators:Marvin Ma  
 Test Date:2022-08-31

□ Range: 0 - 180DEG  
 □ Interval: 1.0DEG  
 Test System:EVERFINE GO-2000A\_V1 SYSTEM V2.0.364  
 Humidity:56%  
 Test Distance:6.500m [K=1.0000]  
 Remarks:

## LUMINANCE LIMITATION CURVES

Test:U:120.6V I:1.284A P:154.5W PF:0.9979 Freq:59.98Hz Lamp Flux:22492x1 lm		
NAME: H17XL-RPC-150W-3K	TYPE:	WEIGHT:
SPEC.:	DIM.:	SERIAL No.:
MFR.: RAB LIGHTING INC	SUR.:0.29*0.29m	Shielding Angle:



LUMINANCE cd/(m2)		
G (DEG)	C0/180	C90/270
85	19048	18386
80	14744	14186
75	14500	14124
70	17709	17142
65	26796	25882
60	33904	32320
55	40668	39376
50	60007	56471
45	92396	88427

C Range: 0 - 360DEG  
C Interval: 45.0DEG  
Test Speed: HIGH  
Temperature:25.1DEG  
Operators:Marvin Ma  
Test Date:2022-08-31

☐ Range: 0 - 180DEG  
☐ Interval: 1.0DEG  
Test System:EVERFINE GO-2000A\_V1 SYSTEM V2.0.364  
Humidity:56%  
Test Distance:6.500m [K=1.0000]  
Remarks:

## WEC AND CCEC

Test:U:120.6V I:1.284A P:154.5W PF:0.9979 Freq:59.98Hz Lamp Flux:22492x1 lm					
NAME: H17XL-RPC-150W-3K			TYPE:		WEIGHT:
SPEC.:			DIM.:		SERIAL No.:
MFR.: RAB LIGHTING INC			SUR.:0.29*0.29m		Shielding Angle:

<input type="checkbox"/> cc	80%			70%			50%			30%			10%			0
<input type="checkbox"/> w	50%	30%	10%	50%	30%	10%	50%	30%	10%	50%	30%	10%	50%	30%	10%	0
<input type="checkbox"/> fc	20%			20%			20%			20%			20%			0
RCR	RCR:Room Cavity Ratio						Wall Exitance Coefficients (WEC)									
0.0																
1.0	.226	.128	.041	.218	.125	.040	.204	.117	.037	.192	.110	.035	.180	.104	.034	
2.0	.217	.119	.037	.211	.116	.036	.199	.111	.034	.188	.105	.033	.177	.100	.032	
3.0	.207	.110	.033	.201	.108	.032	.190	.103	.031	.181	.099	.030	.171	.095	.029	
4.0	.196	.102	.030	.191	.100	.030	.181	.096	.029	.173	.093	.028	.165	.089	.027	
5.0	.185	.094	.027	.181	.093	.027	.172	.090	.026	.165	.087	.026	.157	.084	.025	
6.0	.175	.088	.025	.171	.087	.025	.164	.084	.024	.157	.082	.024	.150	.079	.024	
7.0	.166	.082	.023	.163	.081	.023	.156	.079	.023	.150	.077	.022	.144	.075	.022	
8.0	.158	.077	.022	.155	.076	.022	.148	.074	.021	.143	.072	.021	.137	.071	.021	
9.0	.150	.072	.020	.147	.072	.020	.142	.070	.020	.136	.068	.020	.132	.067	.019	
10.0	.143	.068	.019	.140	.068	.019	.135	.066	.019	.130	.065	.018	.126	.063	.018	

<input type="checkbox"/> cc	80%			70%			50%			30%			10%			0
<input type="checkbox"/> w	50%	30%	10%	50%	30%	10%	50%	30%	10%	50%	30%	10%	50%	30%	10%	0
<input type="checkbox"/> fc	20%			20%			20%			20%			20%			0
RCR	RCR:Room Cavity Ratio						Ceiling Cavity Exitance Coefficients(CCEC)									
0.0	.206	.206	.206	.176	.176	.176	.120	.120	.120	.069	.069	.069	.022	.022	.022	
1.0	.191	.173	.157	.163	.149	.135	.112	.102	.094	.064	.059	.054	.021	.019	.018	
2.0	.179	.149	.123	.153	.128	.107	.105	.088	.074	.060	.051	.044	.019	.017	.014	
3.0	.169	.130	.100	.145	.112	.086	.099	.078	.061	.057	.046	.036	.018	.015	.012	
4.0	.160	.116	.083	.137	.100	.072	.094	.070	.051	.055	.041	.030	.018	.013	.010	
5.0	.153	.105	.070	.131	.091	.061	.090	.064	.043	.052	.037	.026	.017	.012	.008	
6.0	.146	.097	.061	.125	.084	.053	.086	.059	.038	.050	.034	.022	.016	.011	.007	
7.0	.140	.089	.054	.120	.078	.047	.083	.054	.033	.048	.032	.020	.016	.010	.007	
8.0	.134	.084	.049	.115	.072	.043	.080	.051	.030	.046	.030	.018	.015	.010	.006	
9.0	.129	.079	.045	.111	.068	.039	.077	.048	.028	.045	.028	.017	.015	.009	.005	
10.0	.124	.074	.041	.107	.065	.036	.074	.045	.026	.043	.027	.015	.014	.009	.005	

C Range: 0 - 360DEG  
 C Interval: 45.0DEG  
 Test Speed: HIGH  
 Temperature:25.1DEG  
 Operators:Marvin Ma  
 Test Date:2022-08-31

☐ Range: 0 - 180DEG  
☐ Interval: 1.0DEG  
 Test System:EVERFINE GO-2000A\_V1 SYSTEM V2.0.364  
 Humidity:56%  
 Test Distance:6.500m [K=1.0000]  
 Remarks:

## UGR(Unified Glare Rating) Table

Test:U:120.6V I:1.284A P:154.5W PF:0.9979 Freq:59.98Hz Lamp Flux:22492x1 lm										
NAME: H17XL-RPC-150W-3K					TYPE:			WEIGHT:		
SPEC.:					DIM.:			SERIAL No.:		
MFR.: RAB LIGHTING INC					SUR.:0.29*0.29m			Shielding Angle:		
ceiling/cavity	0.7	0.7	0.5	0.5	0.3	0.7	0.7	0.5	0.5	0.3
walls	0.5	0.3	0.5	0.3	0.3	0.5	0.3	0.5	0.3	0.3
working plane	0.2	0.2	0.2	0.2	0.2	0.2	0.2	0.2	0.2	0.2
Room dimensions	Viewed crosswise					Viewed endwise				
x = 2H y = 2H	25.0	26.2	25.2	26.4	26.6	24.9	26.1	25.1	26.3	26.5
3H	25.1	26.2	25.4	26.4	26.7	25.0	26.1	25.3	26.3	26.6
4H	25.1	26.1	25.4	26.4	26.7	25.0	26.0	25.3	26.3	26.6
6H	25.1	26.1	25.5	26.4	26.7	25.0	26.0	25.3	26.3	26.6
8H	25.1	26.0	25.5	26.3	26.7	25.0	25.9	25.4	26.2	26.5
12H	25.1	26.0	25.5	26.3	26.7	25.0	25.9	25.4	26.2	26.5
4H 2H	24.9	26.0	25.3	26.2	26.5	24.8	25.9	25.2	26.1	26.4
3H	25.1	26.0	25.5	26.3	26.7	25.0	25.9	25.4	26.2	26.6
4H	25.2	26.0	25.6	26.3	26.7	25.1	25.9	25.5	26.2	26.6
6H	25.2	26.0	25.7	26.3	26.7	25.1	25.8	25.6	26.2	26.6
8H	25.3	25.9	25.7	26.3	26.7	25.2	25.8	25.6	26.2	26.6
12H	25.3	25.9	25.8	26.3	26.8	25.2	25.8	25.7	26.2	26.7
8H 4H	25.1	25.8	25.6	26.2	26.6	25.0	25.7	25.5	26.1	26.5
6H	25.2	25.8	25.7	26.2	26.7	25.1	25.7	25.6	26.1	26.6
8H	25.3	25.8	25.8	26.3	26.7	25.2	25.7	25.7	26.1	26.6
12H	25.4	25.8	25.9	26.3	26.8	25.3	25.7	25.8	26.2	26.7
12H 4H	25.1	25.7	25.5	26.1	26.5	25.0	25.6	25.4	26.0	26.4
6H	25.2	25.7	25.7	26.2	26.6	25.1	25.6	25.6	26.1	26.5
8H	25.3	25.7	25.8	26.2	26.7	25.2	25.6	25.7	26.1	26.6
Variations with the observer position at spacings:										
S = 1.0H	+ 1.5 / - 2.3					+ 1.5 / - 2.4				
1.5H	+ 2.2 / - 2.1					+ 2.3 / - 2.1				
2.0H	+ 3.1 / - 1.7					+ 3.0 / - 1.6				

CIE Pub.117, 22492 lm Total Lamp Luminous Flux Corrected ( $8\log(F/F_0) = 10.8$ )

C Range: 0 - 360DEG  
 C Interval: 45.0DEG  
 Test Speed: HIGH  
 Temperature:25.1DEG  
 Operators:Marvin Ma  
 Test Date:2022-08-31

☐ Range: 0 - 180DEG  
☐ Interval: 1.0DEG  
 Test System:EVERFINE GO-2000A\_V1 SYSTEM V2.0.364  
 Humidity:56%  
 Test Distance:6.500m [K=1.0000]  
 Remarks:

## UTILIZATION FACTORS TABLE

Test:U:120.6V I:1.284A P:154.5W PF:0.9979 Freq:59.98Hz Lamp Flux:22492x1 lm		
NAME: H17XL-RPC-150W-3K	TYPE:	WEIGHT:
SPEC.:	DIM.:	SERIAL No.:
MFR.: RAB LIGHTING INC	SUR.:0.29*0.29m	Shielding Angle:

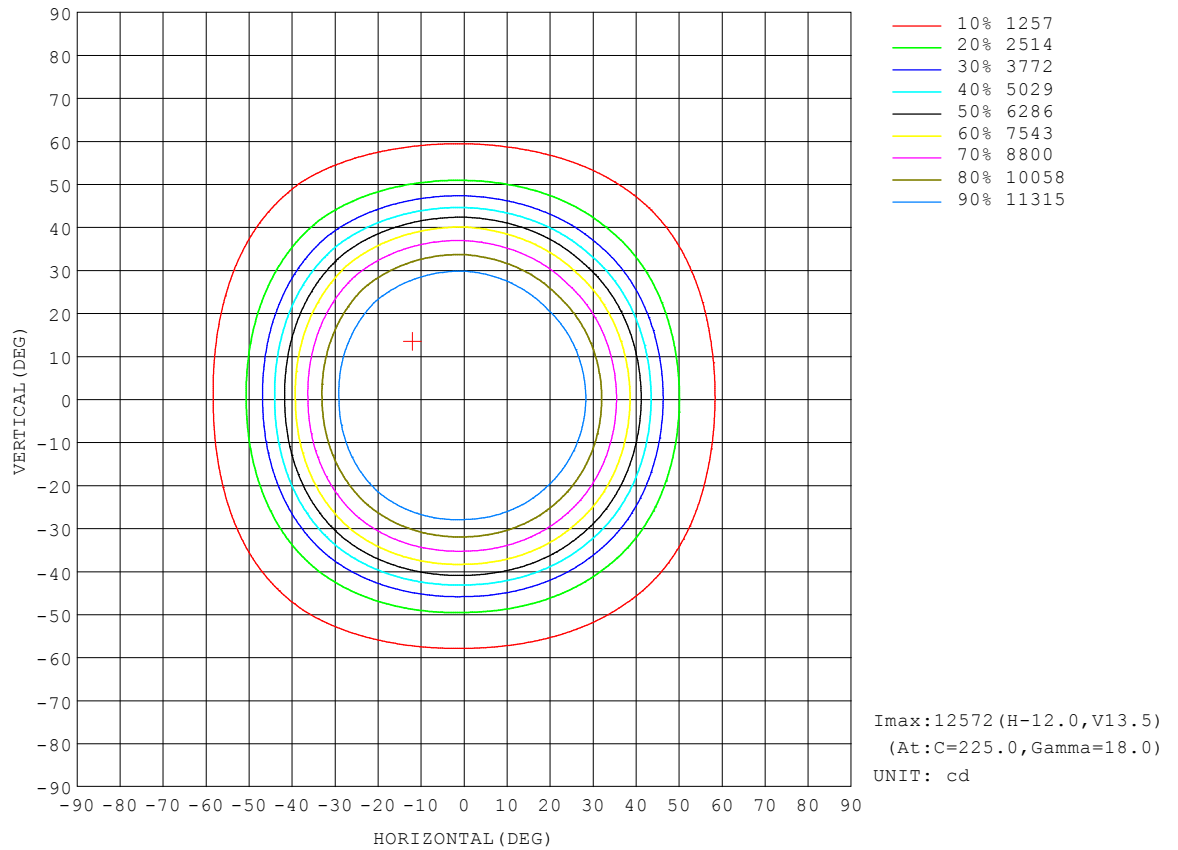
REFLECTANCE										
Ceiling	0.8	0.8	0.8	0.7	0.7	0.7	0.5	0.5	0.5	0
Walls	0.7	0.5	0.3	0.7	0.5	0.3	0.7	0.5	0.3	0
Working plane	0.2	0.2	0.2	0.2	0.2	0.2	0.2	0.2	0.2	0
ROOM INDEX	UTILIZATION FACTORS (PERCENT) $k(RI) \times RCR = 5$									
$k = 0.60$	73	64	59	72	64	59	71	63	58	54
0.80	82	74	68	81	73	68	80	72	68	62
1.00	89	81	76	88	80	75	86	81	75	69
1.25	95	87	82	93	86	82	91	85	81	75
1.50	98	92	87	97	91	86	94	89	85	79
2.00	103	97	93	101	96	92	98	94	90	83
2.50	105	100	96	103	99	95	100	96	93	85
3.00	108	103	99	106	101	98	102	98	95	88
4.00	110	106	103	108	105	102	104	101	99	90
5.00	112	109	106	109	107	104	105	103	101	92
ROOM INDEX	UF (total)									Direct
According to DIN EN 13032-2 2004			Suspended					SHRNOM = 1.25		

C Range: 0 - 360DEG  
 C Interval: 45.0DEG  
 Test Speed: HIGH  
 Temperature: 25.1DEG  
 Operators: Marvin Ma  
 Test Date: 2022-08-31

☐ Range: 0 - 180DEG  
☐ Interval: 1.0DEG  
 Test System: EVERFINE GO-2000A\_V1 SYSTEM V2.0.364  
 Humidity: 56%  
 Test Distance: 6.500m [K=1.0000]  
 Remarks:

## ISOCANDELA DIAGRAM

Test:U:120.6V I:1.284A P:154.5W PF:0.9979 Freq:59.98Hz Lamp Flux:22492x1 lm		
NAME: H17XL-RPC-150W-3K	TYPE:	WEIGHT:
SPEC.:	DIM.:	SERIAL No.:
MFR.: RAB LIGHTING INC	SUR.:0.29*0.29m	Shielding Angle:

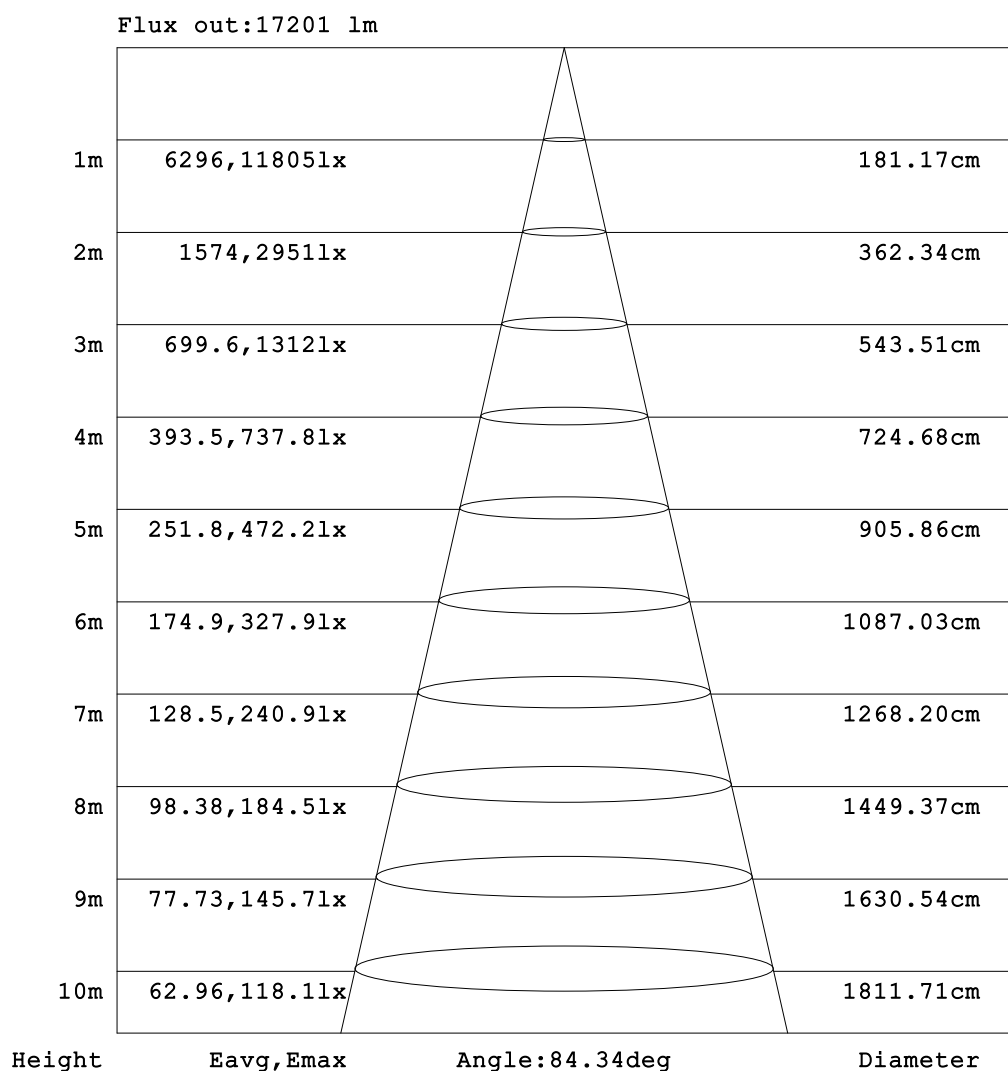


C Range: 0 - 360DEG  
C Interval: 45.0DEG  
Test Speed: HIGH  
Temperature:25.1DEG  
Operators:Marvin Ma  
Test Date:2022-08-31

☐ Range: 0 - 180DEG  
☐ Interval: 1.0DEG  
Test System:EVERFINE GO-2000A\_V1 SYSTEM V2.0.364  
Humidity:56%  
Test Distance:6.500m [K=1.0000]  
Remarks:

## AAI Figure

Test:U:120.6V I:1.284A P:154.5W PF:0.9979 Freq:59.98Hz Lamp Flux:22492x1 lm		
NAME: H17XL-RPC-150W-3K	TYPE:	WEIGHT:
SPEC.:	DIM.:	SERIAL No.:
MFR.: RAB LIGHTING INC	SUR.:0.29*0.29m	Shielding Angle:



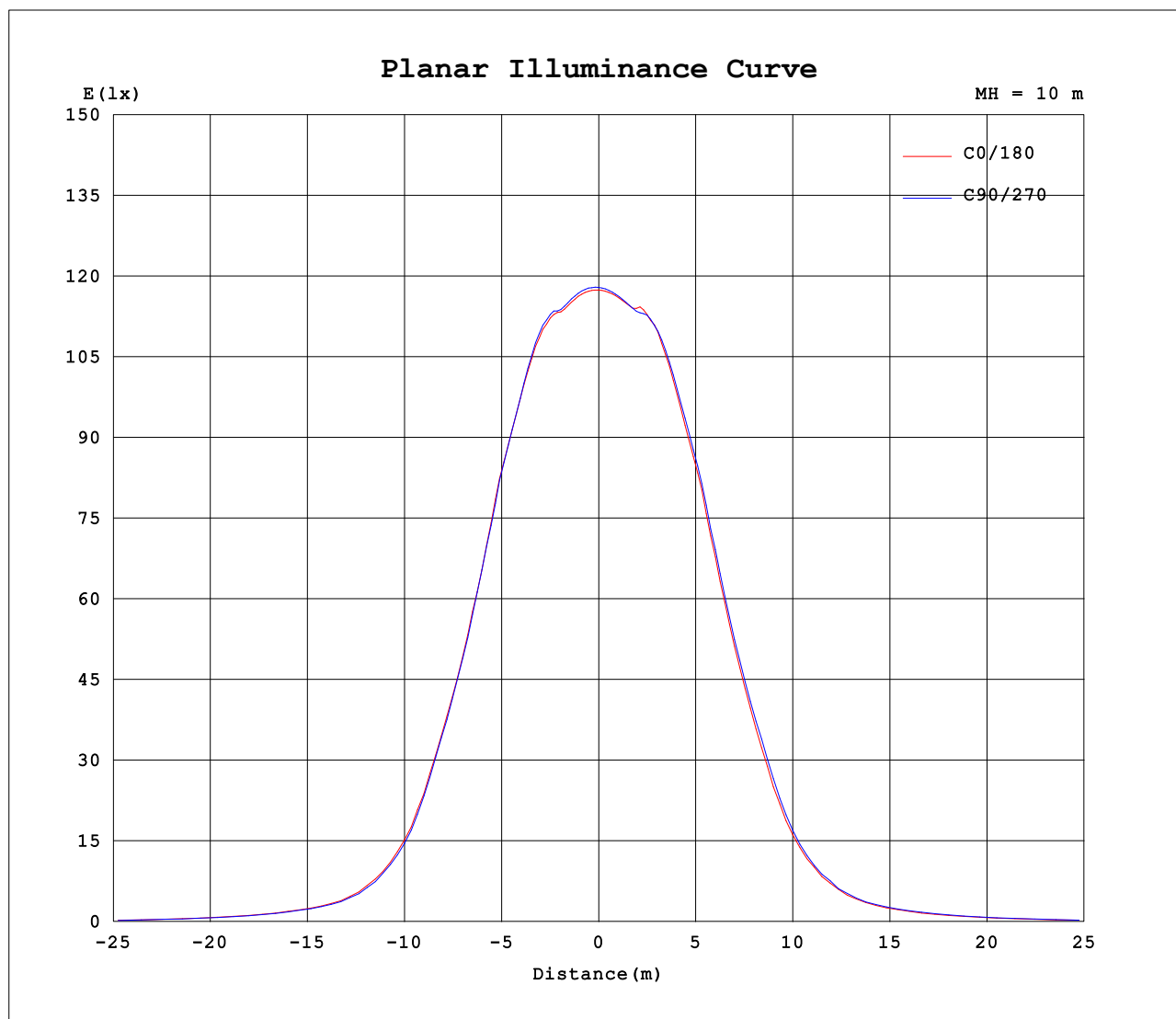
Note: The Curves indicate the illuminated area and the average illumination when the luminaire is at different distance.

C Range: 0 - 360DEG  
 C Interval: 45.0DEG  
 Test Speed: HIGH  
 Temperature: 25.1DEG  
 Operators: Marvin Ma  
 Test Date: 2022-08-31

☐ Range: 0 - 180DEG  
☐ Interval: 1.0DEG  
 Test System: EVERFINE GO-2000A\_V1 SYSTEM V2.0.364  
 Humidity: 56%  
 Test Distance: 6.500m [K=1.0000]  
 Remarks:



## Planar Illuminance Curve



C Range: 0 - 360DEG  
C Interval: 45.0DEG  
Test Speed: HIGH  
Temperature: 25.1DEG  
Operators: Marvin Ma  
Test Date: 2022-08-31

☐ Range: 0 - 180DEG  
☐ Interval: 1.0DEG  
Test System: EVERFINE GO-2000A\_V1 SYSTEM V2.0.364  
Humidity: 56%  
Test Distance: 6.500m [K=1.0000]  
Remarks:

## LUMINOUS DISTRIBUTION INTENSITY DATA

Test:U:120.6V I:1.284A P:154.5W PF:0.9979 Freq:59.98Hz Lamp Flux:22492x1 lm		
NAME: H17XL-RPC-150W-3K	TYPE:	WEIGHT:
SPEC.:	DIM.:	SERIAL No.:
MFR.: RAB LIGHTING INC	SUR.:0.29*0.29m	Shielding Angle:

Table--1

UNIT: ×10cd

C (DEG) □ (DEG)	0	45	90	135	180	225	270	315										
0	1174	1177	1179	1181	1174	1177	1179	1181										
5	1180	1184	1186	1185	1177	1177	1180	1185										
10	1192	1196	1198	1198	1194	1191	1194	1200										
15	1233	1235	1241	1244	1240	1240	1243	1241										
20	1234	1233	1239	1245	1245	1252	1253	1240										
25	1190	1186	1188	1200	1201	1222	1219	1192										
30	1078	1070	1076	1101	1104	1140	1124	1081										
35	899	887	891	923	931	978	955	895										
40	689	663	682	723	720	772	756	692										
45	431	403	413	446	458	505	480	425										
50	255	235	240	265	270	295	288	252										
55	154	148	149	160	160	177	169	158										
60	112	105	107	114	111	124	121	114										
65	74.7	70.1	72.2	77.9	75.1	84.4	82.8	76.2										
70	40.0	36.9	38.7	42.5	40.8	47.7	46.1	40.4										
75	24.8	23.9	24.1	25.7	25.3	29.0	27.9	25.5										
80	16.9	15.8	16.3	17.7	17.2	19.4	18.8	17.6										
85	11.0	10.2	10.6	11.5	11.2	12.1	11.7	10.9										
90	6.59	6.05	6.36	6.87	6.53	6.64	6.78	6.66										
95	5.14	5.09	5.11	5.13	4.97	4.96	5.00	5.10										
100	5.08	5.14	5.13	5.00	4.90	4.88	4.92	5.00										
105	5.41	5.49	5.54	5.31	5.28	5.29	5.32	5.39										
110	6.11	6.31	6.29	6.13	6.15	6.18	6.03	6.27										
115	7.09	7.25	7.20	6.97	6.96	6.73	6.67	7.05										
120	8.37	8.73	8.45	8.47	7.69	7.87	7.89	8.61										
125	8.69	9.33	8.58	8.86	7.87	8.25	8.00	8.99										
130	8.53	8.87	8.30	8.42	7.81	7.92	7.93	8.28										
135	8.53	8.73	8.51	8.51	8.41	8.33	8.32	8.57										
140	9.05	9.21	8.99	8.96	8.98	8.87	8.94	9.05										
145	9.39	9.41	9.36	9.21	9.36	9.17	9.34	9.36										
150	9.53	9.55	9.57	9.37	9.55	9.38	9.50	9.60										
155	9.81	9.85	9.92	9.64	9.85	9.70	9.71	9.93										
160	10.4	10.4	10.5	10.2	10.4	10.2	10.3	10.4										
165	10.9	10.8	11.0	10.7	10.9	10.8	10.9	10.8										
170	11.1	10.9	11.2	10.9	11.2	11.0	11.1	10.7										
175	11.1	10.8	11.1	10.9	11.2	10.9	11.1	10.7										
180	11.3	10.8	11.2	10.8	11.3	10.8	11.2	10.8										

C Range: 0 - 360DEG  
 C Interval: 45.0DEG  
 Test Speed: HIGH  
 Temperature:25.1DEG  
 Operators:Marvin Ma  
 Test Date:2022-08-31

□ Range: 0 - 180DEG  
 □ Interval: 1.0DEG  
 Test System:EVERFINE GO-2000A\_V1 SYSTEM V2.0.364  
 Humidity:56%  
 Test Distance:6.500m [K=1.0000]  
 Remarks: