

Photometric Test Report

Relevant Standards

- ☒ ANSI/IES LM-79-19
- ☒ ANSI C82.77-2020

Prepared For

RAB Lighting Inc.

Address: 408 W 14th St New York, NY 10014

Prepared By

Dongguan New Testing Centre Co., Ltd.

Address: 3F No. 1 the 1st North Industry Road, Songshan Lake Science & Technology Park, Dongguan, Guangdong, China

Prepare by:

Alan Wang

Engineer: Alan Wang

Date: 2025-12-10

Review by:

Vincent Yuan

Technical Lead: Vincent Yuan

Issue Date: 2025-12-10

Revised Date: N/A

1.0 Test Summary

DLC Technical Requirements V6.0

Track or Mono-Point Luminaires				
Requirement Category	Test Method	Requirements		Test Value
Luminaire Output (lm) (Goniophotometer – Section 4.2)	ANSI/IES LM-79-19	≥250lm		1765
Minimum Luminaire Efficacy (lm/W) (Goniophotometer – Section 4.2)	ANSI/IES LM-79-19	Standard	Premium	89.1
		95	110	
Power (Input Wattage) (W) (Goniophotometer – Section 4.2)	ANSI/IES LM-79-19	Worst Case		19.8
Total Harmonic Distortion (A%) (THD & PF – Section 4.3)	ANSI C82.77:2002 ANSI C82-77-10:2020	20.00%	120V	12.71
Power Factor (THD & PF – Section 4.3)	ANSI C82.77:2002 ANSI C82-77-10:2020	0.9	120V	0.977
Allowable CCTs* (K) (Integrating Sphere – Section 4.1)	ANSI/IES LM-79-19	7 steps	5029±283	5037
		4 steps	5029±220	
Chromaticity (D _{uv}) (Integrating Sphere – Section 4.1)	ANSI/IES LM-79-19	7 steps	0.0020±0.0060	0.0033
		4 steps	0.0020±0.0033	
Minimum CRI (Integrating Sphere – Section 4.1)	ANSI/IES LM-79 19 CIE13.3-1995	≥80		93.6
Minimum R9 (Integrating Sphere – Section 4.1)	ANSI/IES LM-79-19 CIE13.3-1995	≥0		66
Minimum Rf (Integrating Sphere – Section 4.1)	ANSI/IES TM-30-24	≥70		91
Minimum Rg (Integrating Sphere – Section 4.1)	ANSI/IES TM-30-24	≥89		97
IES Rcs,h1 (Integrating Sphere – Section 4.1)	ANSI/IES TM-30-24	-12%≤IES Rcs,h1≤+23%		-5%
Zonal Lumen Requirement (0°-90°) (Goniophotometer – Section 4.2)	ANSI/IES LM-79-19	≥ 85%		100.0%
Input Voltage (V)				
(Goniophotometer – Section 4.2)	ANSI/IES LM-79-19	Worst Cast		120.0
(Goniophotometer – Section 4.2)		Non-Worst Case		N/A
Input Current (A)				
(Goniophotometer – Section 4.2)	ANSI/IES LM-79-19	Worst Case		0.169
(Goniophotometer – Section 4.2)		Non-Worst Case		N/A
Power (Input Wattage – W)				
(Goniophotometer – Section 4.2)	ANSI/IES LM-79-19	Worst Case		19.8
(Goniophotometer – Section 4.2)		Non-Worst Case		N/A

2.0 Test List

Test Item	Test	Test Date	Model Number	Build Level	Sample No.
1	Integrating Sphere Test	2025-12-09	PIVOTLB @20W5000K	-	250903026-S1
2	Goniophotometer Test	2025-12-09	PIVOTLB @20W5000K	-	250903026-S1
3	THD and PF Test	2025-12-09	PIVOTLB @20W5000K	-	250903026-S1

Remark (If any):

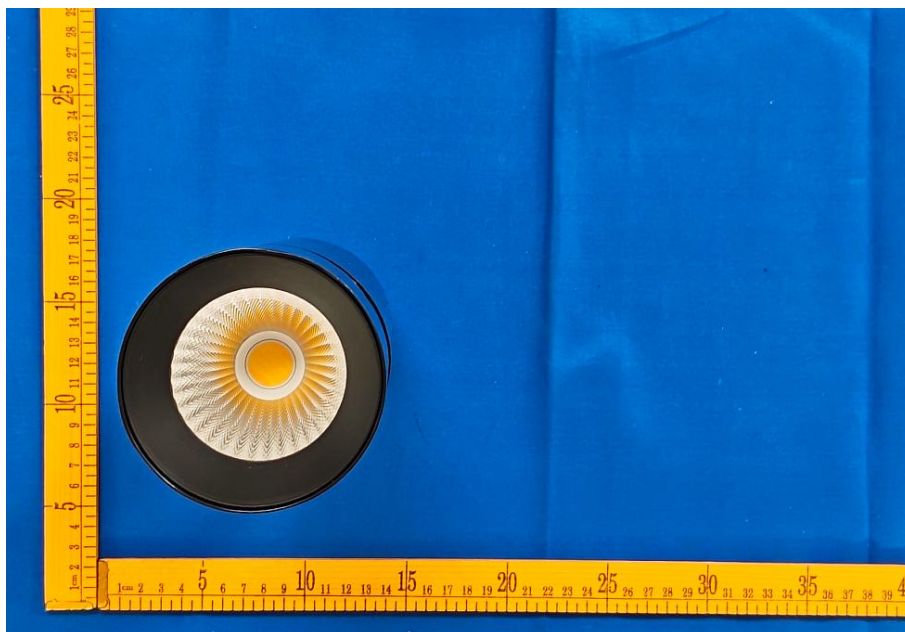
1. The results contained in this report pertain only to the tested samples.
2. This report shall not be reproduced, no limited part or full, without approval of Dongguan New Testing Centre Co., Ltd.
3. This report must not be used by the client to claim product certification, approval, or endorsement by NVLAP, NIST or any agency of the U.S. Government.

3.0 Product Description

Luminaire Description: Model No. PIVOTLB @20W5000K, color tunable from 2700K, 3000K, 3500K, 4000K and 5000K.

Electrical Specification: 120Vac, 60Hz

Photos of Luminaire Characteristics



4.0 LM-79 Measurement and Test Results

4.1 Integrating Sphere Test

Model No.	PIVOTLB @20W5000K	Sample ID	250903026-S1
Operate time (Min.)	10	Stabilization time (Min.)	60
Temperature (°C)	25.4	Humidity (%RH)	41.0

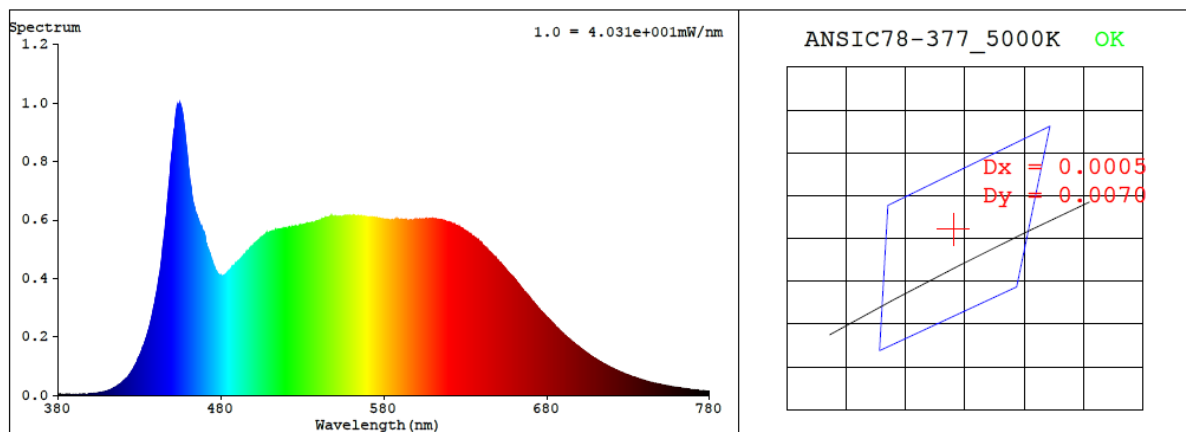
Test Method
<p>The Samples were tested according to the ANSI/IES LM-79:2019.</p> <p>Photometric parameters were measured using an integrating sphere, a spectroradiometer and software. The ambient temperature condition inside the sphere was maintained at $25\pm1^{\circ}\text{C}$.</p> <p>The sample measurements were made using a spectroradiometer connected by a fiber optic cable and detector through the detector port of the integrating sphere.</p> <p>The voltage of an AC power supply (RMS voltage) or DC power supply (instantaneous voltage) applied to the device under test shall be regulated to within ± 0.2 percent under load.</p> <p>The sample was measured using 4π geometry and operated at rated voltage and was stabilized before measurement. Chromaticity coordinates, correlated color temperature and color rendering index were calculated from the spectral radiant flux measurements taken at 1 nm intervals over the range of 380 to 780nm.</p>

Test Result

Voltage (Vac)	Frequency (Hz)	Current (A)	Power (W)	Power Factor
120.0	60	0.169	19.8	0.977

CCT (K)	CRI	R9	Duv	SDCM	Rf	Rg	IES Rcs,h1
5037	93.6	66	0.0033	1.5	91	97	-5%

4.1 Integrating Sphere Test



Colorimetric Parameters

Chromaticity Coordinate: $x = 0.3446$ $y = 0.3578$ / $u' = 0.2087$ $v' = 0.4876$ ($duv=3.31e-03$)

CCT= 5037K Prcp WL: Ld=569.1nm Purity=10.8%

Peak WL: Lp=455nm FWHM: =28.0nm Ratio:R=17.1% G=77.2% B=5.7%

Render Index: Ra = 93.6 AvgR = 90.8 TM30:Rf=92 Rg=98

EEI: 0.15698 A+

R1 =94 R2 =97 R3 =98 R4 =92 R5 =93 R6 =95 R7 =93

R8 =86 R9 =66 R10=93 R11=93 R12=76 R13=95 R14=99 R15=91

4.1 Integrating Sphere Test

ANSI/IES TM-30-24 Color Rendition Report

Source: BXRV-TR-2750G-30A0-A-2x

Make: RAB Lighting Inc.

Date: 2025/12/10

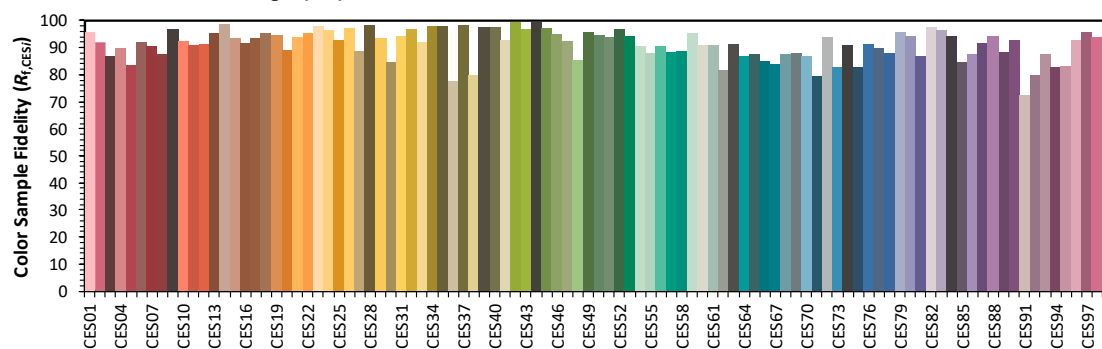
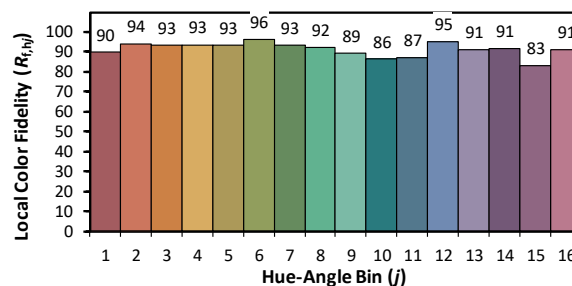
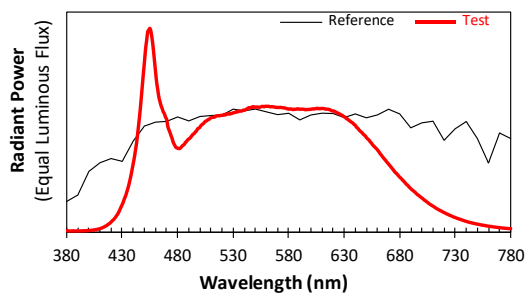
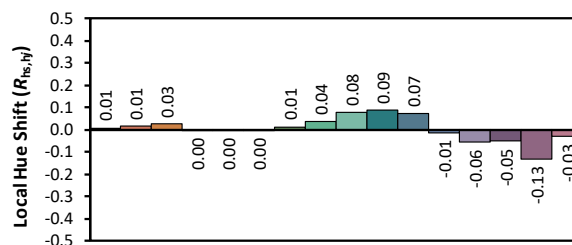
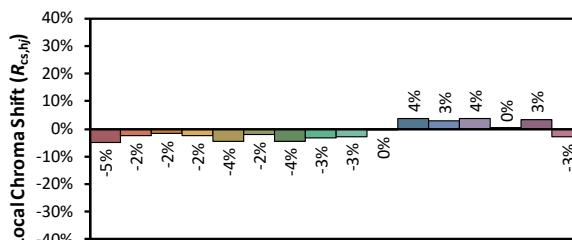
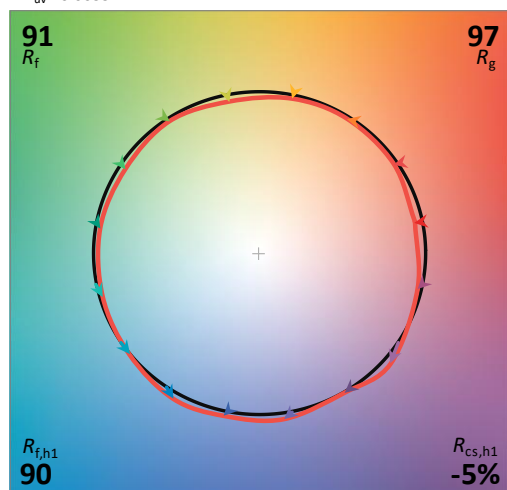
Model: PIVOTLB @20W5000K

Notes: N/A

Other: N/A

CCT: 5041 K
 D_{uv} : 0.0033

P2 V- F2



TM-30 Advanced Calculator Version 2.04

Created

2025/12/10

4.1 Integrating Sphere Test

Spectral Distribution over Visible Wavelength											
WL (nm)	Radiant (W/nm)	WL (nm)	Radiant (W/nm)	WL (nm)	Radiant (W/nm)	WL (nm)	Radiant (W/nm)	WL (nm)	Radiant (W/nm)	WL (nm)	Radiant (W/nm)
380	4.90E-03	447	6.46E-01	514	5.66E-01	581	6.02E-01	648	4.74E-01	715	1.08E-01
381	4.20E-03	448	7.08E-01	515	5.67E-01	582	6.02E-01	649	4.70E-01	716	1.05E-01
382	3.80E-03	449	7.73E-01	516	5.68E-01	583	6.00E-01	650	4.62E-01	717	1.02E-01
383	3.20E-03	450	8.30E-01	517	5.69E-01	584	5.99E-01	651	4.56E-01	718	9.97E-02
384	3.50E-03	451	8.94E-01	518	5.68E-01	585	6.01E-01	652	4.51E-01	719	9.64E-02
385	3.80E-03	452	9.37E-01	519	5.71E-01	586	6.00E-01	653	4.44E-01	720	9.38E-02
386	4.40E-03	453	9.81E-01	520	5.70E-01	587	6.01E-01	654	4.37E-01	721	9.13E-02
387	3.20E-03	454	9.88E-01	521	5.71E-01	588	6.03E-01	655	4.31E-01	722	8.82E-02
388	3.40E-03	455	9.97E-01	522	5.75E-01	589	6.01E-01	656	4.23E-01	723	8.61E-02
389	3.70E-03	456	9.77E-01	523	5.72E-01	590	6.01E-01	657	4.18E-01	724	8.33E-02
390	3.60E-03	457	9.43E-01	524	5.76E-01	591	6.01E-01	658	4.12E-01	725	8.06E-02
391	3.60E-03	458	8.96E-01	525	5.77E-01	592	6.01E-01	659	4.07E-01	726	7.86E-02
392	3.90E-03	459	8.41E-01	526	5.78E-01	593	6.01E-01	660	4.01E-01	727	7.62E-02
393	4.10E-03	460	7.86E-01	527	5.77E-01	594	6.00E-01	661	3.94E-01	728	7.34E-02
394	4.20E-03	461	7.34E-01	528	5.80E-01	595	5.98E-01	662	3.86E-01	729	7.15E-02
395	4.70E-03	462	6.97E-01	529	5.80E-01	596	5.99E-01	663	3.79E-01	730	6.99E-02
396	4.50E-03	463	6.60E-01	530	5.83E-01	597	5.99E-01	664	3.72E-01	731	6.73E-02
397	4.80E-03	464	6.39E-01	531	5.84E-01	598	6.00E-01	665	3.65E-01	732	6.50E-02
398	5.10E-03	465	6.18E-01	532	5.86E-01	599	6.00E-01	666	3.58E-01	733	6.37E-02
399	5.40E-03	466	6.04E-01	533	5.89E-01	600	6.01E-01	667	3.52E-01	734	6.12E-02
400	5.80E-03	467	5.87E-01	534	5.87E-01	601	6.01E-01	668	3.45E-01	735	5.98E-02
401	6.30E-03	468	5.79E-01	535	5.90E-01	602	6.02E-01	669	3.38E-01	736	5.77E-02
402	7.00E-03	469	5.61E-01	536	5.91E-01	603	6.02E-01	670	3.32E-01	737	5.58E-02
403	7.50E-03	470	5.52E-01	537	5.91E-01	604	6.03E-01	671	3.25E-01	738	5.40E-02
404	8.20E-03	471	5.18E-01	538	5.92E-01	605	6.04E-01	672	3.19E-01	739	5.23E-02
405	9.30E-03	472	5.01E-01	539	5.96E-01	606	6.05E-01	673	3.11E-01	740	5.05E-02
406	1.01E-02	473	4.87E-01	540	5.95E-01	607	6.03E-01	674	3.05E-01	741	4.90E-02
407	1.08E-02	474	4.71E-01	541	5.98E-01	608	6.04E-01	675	2.97E-01	742	4.73E-02
408	1.23E-02	475	4.56E-01	542	6.01E-01	609	6.03E-01	676	2.91E-01	743	4.58E-02
409	1.36E-02	476	4.38E-01	543	6.04E-01	610	6.04E-01	677	2.86E-01	744	4.45E-02
410	1.49E-02	477	4.27E-01	544	6.08E-01	611	6.04E-01	678	2.80E-01	745	4.32E-02
411	1.72E-02	478	4.16E-01	545	6.08E-01	612	6.03E-01	679	2.74E-01	746	4.17E-02
412	1.92E-02	479	4.12E-01	546	6.09E-01	613	6.01E-01	680	2.68E-01	747	4.06E-02
413	2.13E-02	480	4.10E-01	547	6.11E-01	614	6.01E-01	681	2.63E-01	748	3.94E-02
414	2.47E-02	481	4.08E-01	548	6.13E-01	615	6.01E-01	682	2.57E-01	749	3.81E-02
415	2.75E-02	482	4.09E-01	549	6.10E-01	616	6.00E-01	683	2.51E-01	750	3.71E-02
416	2.99E-02	483	4.13E-01	550	6.11E-01	617	5.99E-01	684	2.46E-01	751	3.61E-02
417	3.48E-02	484	4.20E-01	551	6.11E-01	618	5.95E-01	685	2.39E-01	752	3.51E-02
418	3.83E-02	485	4.25E-01	552	6.11E-01	619	5.93E-01	686	2.33E-01	753	3.39E-02
419	4.21E-02	486	4.29E-01	553	6.10E-01	620	5.92E-01	687	2.29E-01	754	3.29E-02
420	4.77E-02	487	4.38E-01	554	6.10E-01	621	5.91E-01	688	2.22E-01	755	3.16E-02
421	5.33E-02	488	4.43E-01	555	6.12E-01	622	5.87E-01	689	2.16E-01	756	3.11E-02
422	5.83E-02	489	4.51E-01	556	6.14E-01	623	5.86E-01	690	2.11E-01	757	2.98E-02
423	6.41E-02	490	4.55E-01	557	6.14E-01	624	5.82E-01	691	2.06E-01	758	2.88E-02
424	7.11E-02	491	4.59E-01	558	6.13E-01	625	5.80E-01	692	2.02E-01	759	2.80E-02
425	7.98E-02	492	4.65E-01	559	6.15E-01	626	5.77E-01	693	1.97E-01	760	2.70E-02
426	8.71E-02	493	4.73E-01	560	6.14E-01	627	5.73E-01	694	1.93E-01	761	2.62E-02
427	9.78E-02	494	4.78E-01	561	6.15E-01	628	5.72E-01	695	1.87E-01	762	2.57E-02
428	1.09E-01	495	4.83E-01	562	6.15E-01	629	5.67E-01	696	1.82E-01	763	2.49E-02
429	1.22E-01	496	4.90E-01	563	6.12E-01	630	5.63E-01	697	1.79E-01	764	2.39E-02
430	1.33E-01	497	4.95E-01	564	6.13E-01	631	5.60E-01	698	1.74E-01	765	2.32E-02
431	1.46E-01	498	5.05E-01	565	6.13E-01	632	5.54E-01	699	1.69E-01	766	2.26E-02
432	1.62E-01	499	5.08E-01	566	6.12E-01	633	5.53E-01	700	1.65E-01	767	2.18E-02
433	1.75E-01	500	5.12E-01	567	6.11E-01	634	5.47E-01	701	1.61E-01	768	2.12E-02
434	1.92E-01	501	5.21E-01	568	6.10E-01	635	5.44E-01	702	1.56E-01	769	2.05E-02
435	2.11E-01	502	5.25E-01	569	6.09E-01	636	5.39E-01	703	1.52E-01	770	1.98E-02
436	2.31E-01	503	5.30E-01	570	6.10E-01	637	5.36E-01	704	1.48E-01	771	1.93E-02
437	2.54E-01	504	5.36E-01	571	6.09E-01	638	5.32E-01	705	1.44E-01	772	1.85E-02
438	2.79E-01	505	5.41E-01	572	6.09E-01	639	5.25E-01	706	1.40E-01	773	1.78E-02
439	3.08E-01	506	5.44E-01	573	6.09E-01	640	5.22E-01	707	1.35E-01	774	1.75E-02
440	3.37E-01	507	5.48E-01	574	6.08E-01	641	5.13E-01	708	1.33E-01	775	1.69E-02
441	3.66E-01	508	5.50E-01	575	6.08E-01	642	5.09E-01	709	1.28E-01	776	1.64E-02
442	4.02E-01	509	5.55E-01	576	6.07E-01	643	5.02E-01	710	1.25E-01	777	1.59E-02
443	4.38E-01	510	5.58E-01	577	6.05E-01	644	4.95E-01	711	1.22E-01	778	1.54E-02
444	4.85E-01	511	5.60E-01	578	6.04E-01	645	4.91E-01	712	1.18E-01	779	1.54E-02
445	5.35E-01	512	5.61E-01	579	6.03E-01	646	4.86E-01	713	1.15E-01	780	1.55E-02
446	5.86E-01	513	5.62E-01	580	6.01E-01	647	4.79E-01	714	1.11E-01	N/A	N/A

4.0 LM-79 Measurement and Test Results

4.2 Goniophotometer Test

Model No.	PIVOTLB @20W5000K	Sample ID	250903026-S1
Operate time (Min.)	30	Stabilization time (Min.)	60
Temperature (°C)	25.1	Humidity (%RH)	40.9

Test Method
<p>The Samples were tested according to the ANSI/IES LM-79:2019.</p> <p>Photometric parameters were measured using a type C goniophotometer and software.</p> <p>The ambient temperature shall be maintained at $25\pm1^{\circ}\text{C}$, measured at a point not more than 1 m from the sample and at the same height as the sample.</p> <p>The voltage of an AC power supply (RMS voltage) or DC power supply (instantaneous voltage) applied to the device under test shall be regulated to within ± 0.2 percent under load.</p> <p>The samples were operated at rated voltage and was stabilized before measurement. Luminous flux, luminaire efficacy, zonal lumen were calculated from the software taken at 1.0° vertical intervals and 15° horizontal intervals.</p>

Test Conditions

Condition	Voltage (Vac)	Frequency (Hz)	Current (A)	Power (W)	Power Factor
WORST CASE	120.0	60	0.169	19.8	0.977
NON-WORST CASE	N/A	N/A	N/A	N/A	N/A

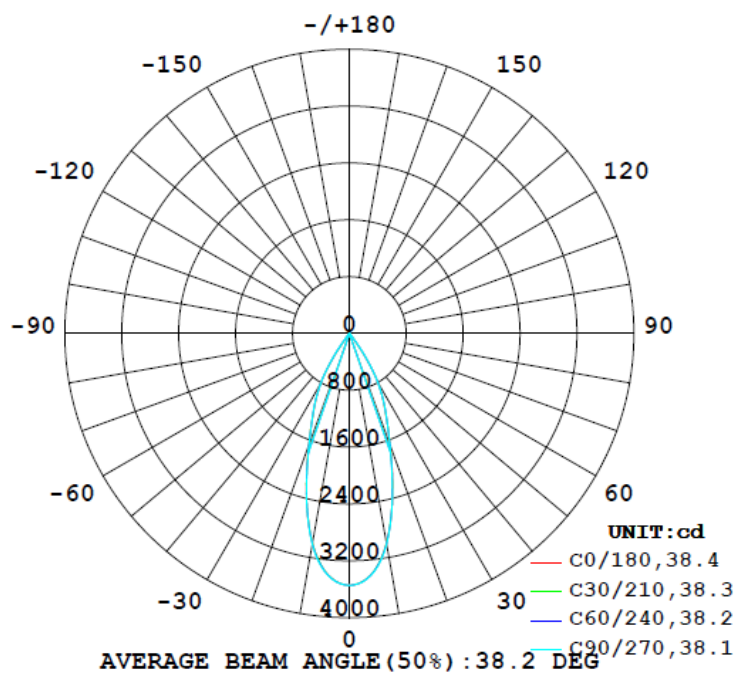
Test Result

Flux (lm)	Field Angle (10%)		Beam Angle (50%)		Luminous Efficacy (lm/W)	Zonal Lumen Requirement
	C0-180	C90-270	C0-180	C90-270		(0°-90°)
1765	69.6	70.4	38.5	38.2	89.1	100.0%

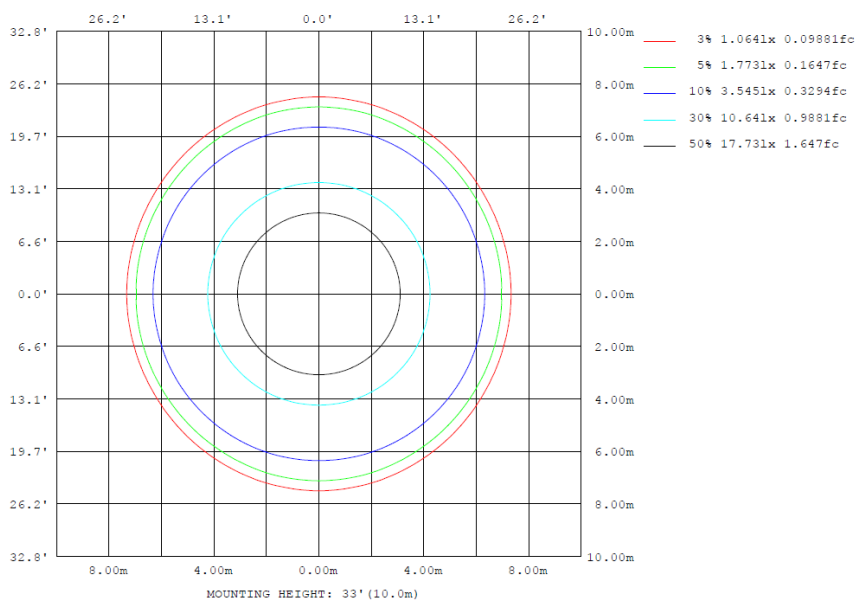
4.2 Goniophotometer Test

Lighting Distribution Curve

LUMINOUS INTENSITY DISTRIBUTION DIAGRAM



Isolux Plot



4.2 Goniophotometer Test

Zonal Lumen Summary

γ	C0	C45	C90	C135	C180	C225	C270	C315	γ	Φ zone	Φ total	%lum, lamp
10	3001	3002	3015	3002	3001	3002	3015	3002	0- 10	313.1	313.1	17.7,17.7
20	1678	1669	1656	1669	1678	1669	1656	1669	10- 20	641.7	954.8	54.1,54.1
30	807.8	812.0	802.6	812.0	807.8	812.0	802.6	812.0	20- 30	547.9	1503	85.1,85.1
40	54.26	65.04	74.58	65.04	54.26	65.04	74.58	65.04	30- 40	220.1	1723	97.6,97.6
50	24.41	24.08	23.78	24.08	24.41	24.08	23.78	24.08	40- 50	25.44	1748	99,99
60	6.670	6.472	6.466	6.472	6.670	6.472	6.466	6.472	50- 60	13.84	1762	99.8,99.8
70	1.146	1.039	1.018	1.039	1.146	1.039	1.018	1.039	60- 70	3.095	1765	100,100
80	0.0505	0.0522	0.0539	0.0522	0.0505	0.0522	0.0539	0.0522	70- 80	0.2168	1765	100,100
90	0	0	0	0	0	0	0	0	80- 90	0.0272	1765	100,100
100	0	0	0	0	0	0	0	0	90-100	0	1765	100,100
110	0	0	0	0	0	0	0	0	100-110	0	1765	100,100
120	0	0	0	0	0	0	0	0	110-120	0	1765	100,100
130	0	0	0	0	0	0	0	0	120-130	0	1765	100,100
140	0	0	0	0	0	0	0	0	130-140	0	1765	100,100
150	0	0	0	0	0	0	0	0	140-150	0	1765	100,100
160	0	0	0	0	0	0	0	0	150-160	0	1765	100,100
170	0	0	0	0	0	0	0	0	160-170	0	1765	100,100
180	0	0	0	0	0	0	0	0	170-180	0	1765	100,100
DEG	LUMINOUS INTENSITY:cd									UNIT:lm		

Zonal (lm)		Total (lm)		Percent
0-10	313.11	0-10	313.11	17.74%
10-20	641.67	0-20	954.78	54.08%
20-30	547.91	0-30	1502.69	85.12%
30-40	220.05	0-40	1722.74	97.59%
40-50	25.44	0-50	1748.18	99.03%
50-60	13.84	0-60	1762.02	99.81%
60-70	3.10	0-70	1765.12	99.99%
70-80	0.22	0-80	1765.34	100.00%
80-90	0.03	0-90	1765.37	100.00%
90-100	0.00	0-100	1765.37	100.00%
100-110	0.00	0-110	1765.37	100.00%
110-120	0.00	0-120	1765.37	100.00%
120-130	0.00	0-130	1765.37	100.00%
130-140	0.00	0-140	1765.37	100.00%
140-150	0.00	0-150	1765.37	100.00%
150-160	0.00	0-160	1765.37	100.00%
160-170	0.00	0-170	1765.37	100.00%
170-180	0.00	0-180	1765.37	100.00%

4.2 Goniophotometer Test

Luminous Distribution Intensity Data

Table--1

UNIT: cd

C (DEG) y (DEG)	0	15	30	45	60	75	90	105	120	135	150	165	180	195	210	225	240	255	270
0	3545	3545	3545	3545	3545	3544	3545	3544	3545	3545	3545	3545	3545	3545	3545	3545	3545	3544	3545
5	3415	3414	3414	3417	3420	3421	3422	3421	3420	3417	3414	3414	3415	3414	3414	3417	3420	3421	3422
10	3001	2999	3000	3002	3006	3012	3015	3012	3006	3002	3000	2999	3001	2999	3000	3002	3006	3012	3015
15	2347	2342	2338	2335	2335	2338	2339	2338	2335	2335	2338	2342	2347	2342	2338	2335	2335	2338	2339
20	1678	1675	1672	1669	1665	1661	1656	1661	1665	1669	1672	1675	1678	1675	1672	1669	1665	1661	1656
25	1185	1183	1194	1195	1200	1200	1199	1200	1200	1195	1194	1183	1185	1183	1194	1195	1200	1200	1199
30	808	810	815	812	809	808	803	808	809	812	815	810	808	810	815	812	809	808	803
35	309	314	318	330	345	362	365	362	345	330	318	314	309	314	318	330	345	362	365
40	54.3	54.3	55.0	65.0	68.5	72.6	74.6	72.6	68.5	65.0	55.0	54.3	54.3	54.3	55.0	65.0	68.5	72.6	74.6
45	29.8	29.6	29.5	29.4	29.5	29.5	29.4	29.5	29.5	29.4	29.5	29.6	29.8	29.6	29.5	29.4	29.5	29.5	29.4
50	24.4	24.3	24.2	24.1	24.0	24.0	23.8	24.0	24.0	24.1	24.2	24.3	24.4	24.3	24.2	24.1	24.0	24.0	23.8
55	16.0	15.9	15.8	15.7	15.8	15.7	15.7	15.7	15.8	15.7	15.8	15.9	16.0	15.9	15.8	15.7	15.8	15.7	15.7
60	6.67	6.61	6.47	6.47	6.46	6.54	6.47	6.54	6.46	6.47	6.47	6.61	6.67	6.61	6.47	6.47	6.46	6.54	6.47
65	3.08	2.94	2.87	2.84	2.86	2.86	2.81	2.86	2.86	2.84	2.87	2.94	3.08	2.94	2.87	2.84	2.86	2.86	2.81
70	1.15	1.04	1.02	1.04	1.05	1.05	1.02	1.05	1.05	1.04	1.02	1.04	1.15	1.04	1.02	1.04	1.05	1.05	1.02
75	0.09	0.09	0.09	0.10	0.10	0.10	0.10	0.10	0.10	0.09	0.09	0.09	0.09	0.09	0.10	0.10	0.10	0.10	0.10
80	0.05	0.05	0.05	0.05	0.05	0.05	0.05	0.05	0.05	0.05	0.05	0.05	0.05	0.05	0.05	0.05	0.05	0.05	0.05
85	0.02	0.02	0.02	0.02	0.02	0.02	0.02	0.02	0.02	0.02	0.02	0.02	0.02	0.02	0.02	0.02	0.02	0.02	0.02
90	0.00	0.00	0.00	0.00	0.00	0.00	0.00	0.00	0.00	0.00	0.00	0.00	0.00	0.00	0.00	0.00	0.00	0.00	0.00
95	0.00	0.00	0.00	0.00	0.00	0.00	0.00	0.00	0.00	0.00	0.00	0.00	0.00	0.00	0.00	0.00	0.00	0.00	0.00
100	0.00	0.00	0.00	0.00	0.00	0.00	0.00	0.00	0.00	0.00	0.00	0.00	0.00	0.00	0.00	0.00	0.00	0.00	0.00
105	0.00	0.00	0.00	0.00	0.00	0.00	0.00	0.00	0.00	0.00	0.00	0.00	0.00	0.00	0.00	0.00	0.00	0.00	0.00
110	0.00	0.00	0.00	0.00	0.00	0.00	0.00	0.00	0.00	0.00	0.00	0.00	0.00	0.00	0.00	0.00	0.00	0.00	0.00
115	0.00	0.00	0.00	0.00	0.00	0.00	0.00	0.00	0.00	0.00	0.00	0.00	0.00	0.00	0.00	0.00	0.00	0.00	0.00
120	0.00	0.00	0.00	0.00	0.00	0.00	0.00	0.00	0.00	0.00	0.00	0.00	0.00	0.00	0.00	0.00	0.00	0.00	0.00
125	0.00	0.00	0.00	0.00	0.00	0.00	0.00	0.00	0.00	0.00	0.00	0.00	0.00	0.00	0.00	0.00	0.00	0.00	0.00
130	0.00	0.00	0.00	0.00	0.00	0.00	0.00	0.00	0.00	0.00	0.00	0.00	0.00	0.00	0.00	0.00	0.00	0.00	0.00
135	0.00	0.00	0.00	0.00	0.00	0.00	0.00	0.00	0.00	0.00	0.00	0.00	0.00	0.00	0.00	0.00	0.00	0.00	0.00
140	0.00	0.00	0.00	0.00	0.00	0.00	0.00	0.00	0.00	0.00	0.00	0.00	0.00	0.00	0.00	0.00	0.00	0.00	0.00
145	0.00	0.00	0.00	0.00	0.00	0.00	0.00	0.00	0.00	0.00	0.00	0.00	0.00	0.00	0.00	0.00	0.00	0.00	0.00
150	0.00	0.00	0.00	0.00	0.00	0.00	0.00	0.00	0.00	0.00	0.00	0.00	0.00	0.00	0.00	0.00	0.00	0.00	0.00
155	0.00	0.00	0.00	0.00	0.00	0.00	0.00	0.00	0.00	0.00	0.00	0.00	0.00	0.00	0.00	0.00	0.00	0.00	0.00
160	0.00	0.00	0.00	0.00	0.00	0.00	0.00	0.00	0.00	0.00	0.00	0.00	0.00	0.00	0.00	0.00	0.00	0.00	0.00
165	0.00	0.00	0.00	0.00	0.00	0.00	0.00	0.00	0.00	0.00	0.00	0.00	0.00	0.00	0.00	0.00	0.00	0.00	0.00
170	0.00	0.00	0.00	0.00	0.00	0.00	0.00	0.00	0.00	0.00	0.00	0.00	0.00	0.00	0.00	0.00	0.00	0.00	0.00
175	0.00	0.00	0.00	0.00	0.00	0.00	0.00	0.00	0.00	0.00	0.00	0.00	0.00	0.00	0.00	0.00	0.00	0.00	0.00
180	0.00	0.00	0.00	0.00	0.00	0.00	0.00	0.00	0.00	0.00	0.00	0.00	0.00	0.00	0.00	0.00	0.00	0.00	0.00

Table--2

UNIT: cd

C (DEG) y (DEG)	285	300	315	330	345														
0	3544	3545	3545	3545	3545														
5	3421	3420	3417	3414	3414														
10	3012	3006	3002	3000	2999														
15	2338	2335	2335	2338	2342														
20	1661	1665	1669	1672	1675														
25	1200	1200	1195	1194	1183														
30	808	809	812	815	810														
35	362	345	330	318	314														
40	72.6	68.5	65.0	55.0	54.3														
45	29.5	29.5	29.4	29.5	29.6														
50	24.0	24.0	24.1	24.2	24.3														
55	15.7	15.8	15.7	15.8	15.9														
60	6.54	6.46	6.47	6.47	6.61														
65	2.86	2.86	2.84	2.87	2.94														
70	1.05	1.05	1.04	1.02	1.04														
75	0.10	0.10	0.10	0.09	0.09														
80	0.05	0.05	0.05	0.05	0.05														
85	0.02	0.02	0.02	0.02	0.02														
90	0.00	0.00	0.00	0.00	0.00														
95	0.00	0.00	0.00	0.00	0.00														
100	0.00	0.00	0.00	0.00	0.00														
105	0.00	0.00	0.00	0.00	0.00														
110	0.00	0.00	0.00	0.00	0.00														
115	0.00	0.00	0.00	0.00	0.00														
120	0.00	0.00	0.00	0.00	0.00														
125	0.00	0.00	0.00	0.00	0.00														
130	0.00	0.00	0.00	0.00	0.00														
135	0.00	0.00	0.00	0.00	0.00														
140	0.00	0.00	0.00	0.00	0.00														
145	0.00	0.00	0.00	0.00	0.00														
150	0.00	0.00	0.00	0.00	0.00														
155	0.00	0.00	0.00	0.00	0.00														
160	0.00	0.00	0.00	0.00	0.00														
165	0.00	0.00	0.00	0.00	0.00														
170	0.00	0.00	0.00	0.00	0.00														
175	0.00	0.00	0.00	0.00	0.00														
180	0.00	0.00	0.00	0.00	0.00														

4.0 LM-79 Measurement and Test Results

4.3 THD and PF Test

Model No.	PIVOTLB @20W5000K	Sample ID	250903026-S1
Temperature (°C)	25.4	Humidity (%RH)	41.0

Test Method
<p>The samples were tested according to the and ANSI C82.77: 2002 and ANSI C82.77-10:2020</p> <p>The total harmonic distortion shall be measured to the 40th order.</p> <p>The ambient temperature shall be maintained at $25 \pm 1^\circ\text{C}$. The sample measurements were made using a digital power meter and power supply. The sample was operated at rated voltage and was stabilized before measurement. The total harmonic distortion was calculated.</p>

Test Results

Voltage (Vac)	Frequency (Hz)	Current (A)	Power (W)	Power Factor	iTHD(%)
120.0	60	0.169	19.8	0.977	12.71

5.0 Equipment List:

Equipment ID	Equipment Name	Last Cal.	Due Cal.
NTC-F01-001	Goniophotometer System	2025-11-06	2026-11-05
NTC-F01-006	2.0 meter Integrating Sphere	2025-11-06	2026-11-05
NTC-F01-012	Standard Lamp	2025-10-27	2026-10-26
NTC-F01-013	Standard Lamp	2025-10-27	2026-10-26
NTC-F01-031	Digital Power Meter	2025-08-04	2026-08-03
NTC-F01-019	Temperature & Humidity Meter	2025-10-23	2026-10-22

*****End of Report*****