

Photometric Test Report

Relevant Standards

- ☒ ANSI/IES LM-79-19
- ☒ ANSI C82.77-2020

Prepared For

RAB Lighting Inc.

Address: 408 W 14th St New York, NY 10014

Prepared By

Dongguan New Testing Centre Co., Ltd.

Address: 3F No. 1 the 1st North Industry Road, Songshan Lake Science & Technology Park, Dongguan, Guangdong, China

Prepare by:

Alan Wang

Engineer: Alan Wang

Date: 2025-12-10

Review by:

Vincent Yuan

Technical Lead: Vincent Yuan

Issue Date: 2025-12-10

Revised Date: N/A

1.0 Test Summary

DLC Technical Requirements V6.0

Track or Mono-Point Luminaires				
Requirement Category	Test Method	Requirements		Test Value
Luminaire Output (lm) (Goniophotometer – Section 4.2)	ANSI/IES LM-79-19	≥250lm		493
Minimum Luminaire Efficacy (lm/W) (Goniophotometer – Section 4.2)	ANSI/IES LM-79-19	Standard	Premium	85.0
		95	110	
Power (Input Wattage) (W) (Goniophotometer – Section 4.2)	ANSI/IES LM-79-19	Worst Case		5.8
Total Harmonic Distortion (A%) (THD & PF – Section 4.3)	ANSI C82.77:2002 ANSI C82-77-10:2020	20.00%	120V	14.20
Power Factor (THD & PF – Section 4.3)	ANSI C82.77:2002 ANSI C82-77-10:2020	0.9	120V	0.947
Allowable CCTs* (K) (Integrating Sphere – Section 4.1)	ANSI/IES LM-79-19	7 steps	2725±145	2772
		4 steps	2725±83	
Chromaticity (D _{uv}) (Integrating Sphere – Section 4.1)	ANSI/IES LM-79-19	7 steps	0.0000±0.0060	0.0009
		4 steps	0.0000±0.0033	
Minimum CRI (Integrating Sphere – Section 4.1)	ANSI/IES LM-79 19 CIE13.3-1995	≥80		95.0
Minimum R9 (Integrating Sphere – Section 4.1)	ANSI/IES LM-79-19 CIE13.3-1995	≥0		67
Minimum Rf (Integrating Sphere – Section 4.1)	ANSI/IES TM-30-24	≥70		92
Minimum Rg (Integrating Sphere – Section 4.1)	ANSI/IES TM-30-24	≥89		97
IES Rcs,h1 (Integrating Sphere – Section 4.1)	ANSI/IES TM-30-24	-12%≤IES Rcs,h1≤+23%		-4%
Zonal Lumen Requirement (0°-90°) (Goniophotometer – Section 4.2)	ANSI/IES LM-79-19	≥ 85%		100.0%
Input Voltage (V)				
(Goniophotometer – Section 4.2)	ANSI/IES LM-79-19	Worst Cast		120.0
(Goniophotometer – Section 4.2)		Non-Worst Case		N/A
Input Current (A)				
(Goniophotometer – Section 4.2)	ANSI/IES LM-79-19	Worst Case		0.051
(Goniophotometer – Section 4.2)		Non-Worst Case		N/A
Power (Input Wattage – W)				
(Goniophotometer – Section 4.2)	ANSI/IES LM-79-19	Worst Case		5.8
(Goniophotometer – Section 4.2)		Non-Worst Case		N/A

2.0 Test List

Test Item	Test	Test Date	Model Number	Build Level	Sample No.
1	Integrating Sphere Test	2025-12-08	PIVOTMB @6W2700K	-	250903027-S1
2	Goniophotometer Test	2025-12-08	PIVOTMB @6W2700K	-	250903027-S1
3	THD and PF Test	2025-12-08	PIVOTMB @6W2700K	-	250903027-S1

Remark (If any):

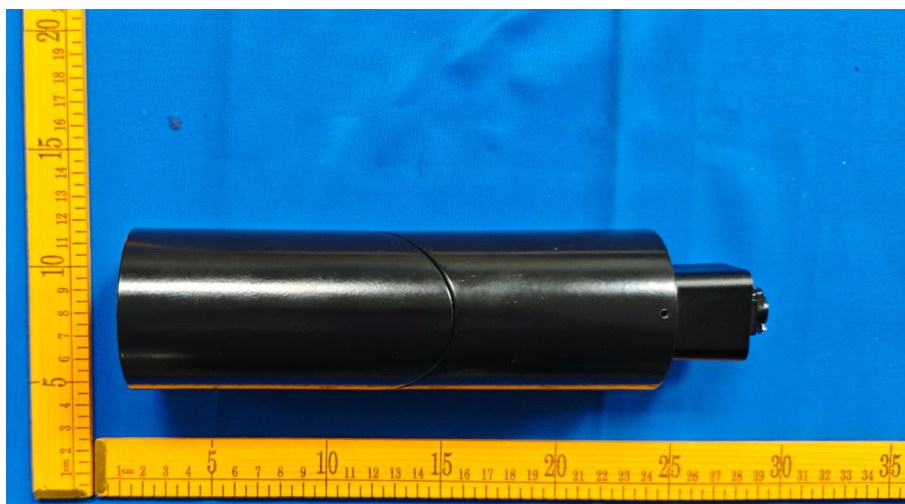
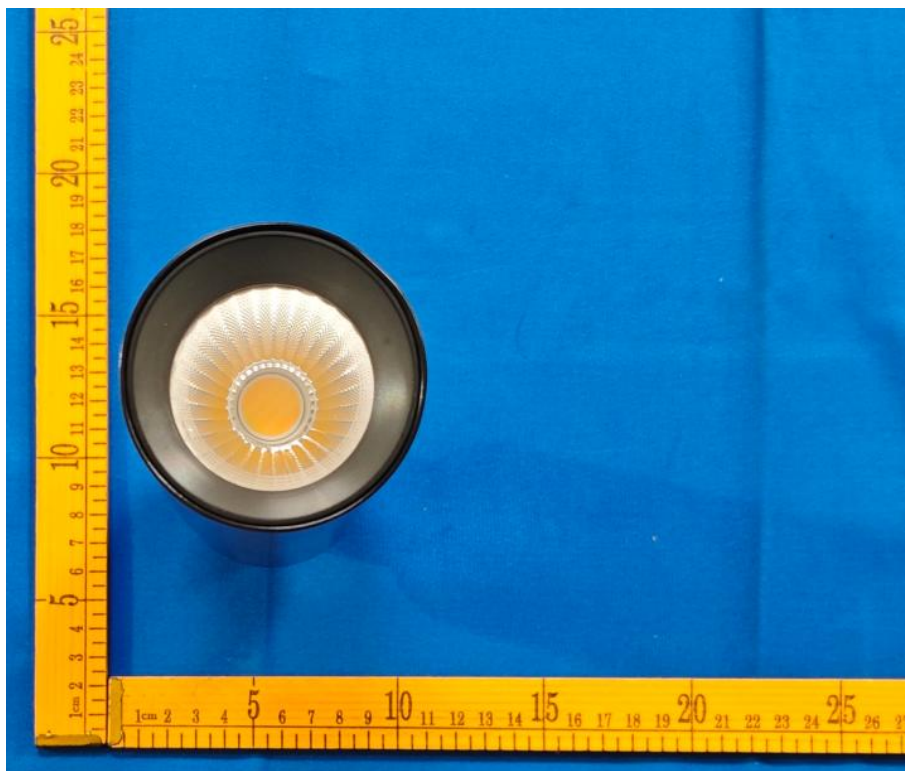
1. The results contained in this report pertain only to the tested samples.
2. This report shall not be reproduced, no limited part or full, without approval of Dongguan New Testing Centre Co., Ltd.
3. This report must not be used by the client to claim product certification, approval, or endorsement by NVLAP, NIST or any agency of the U.S. Government.

3.0 Product Description

Luminaire Description: Model No. PIVOTMB @6W2700K, color tunable from 2700K, 3000K, 3500K, 4000K and 5000K.

Electrical Specification: 120Vac, 60Hz

Photos of Luminaire Characteristics



4.0 LM-79 Measurement and Test Results

4.1 Integrating Sphere Test

Model No.	PIVOTMB @6W2700K	Sample ID	250903027-S1
Operate time (Min.)	10	Stabilization time (Min.)	60
Temperature (°C)	25.4	Humidity (%RH)	41.0

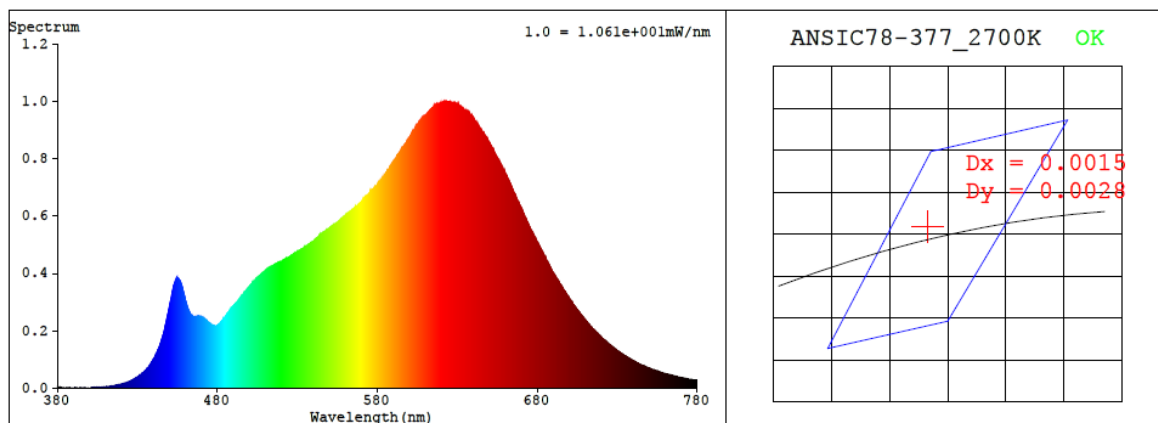
Test Method
<p>The Samples were tested according to the ANSI/IES LM-79:2019.</p> <p>Photometric parameters were measured using an integrating sphere, a spectroradiometer and software. The ambient temperature condition inside the sphere was maintained at 25±1°C.</p> <p>The sample measurements were made using a spectroradiometer connected by a fiber optic cable and detector through the detector port of the integrating sphere.</p> <p>The voltage of an AC power supply (RMS voltage) or DC power supply (instantaneous voltage) applied to the device under test shall be regulated to within ±0.2 percent under load.</p> <p>The sample was measured using 4π geometry and operated at rated voltage and was stabilized before measurement. Chromaticity coordinates, correlated color temperature and color rendering index were calculated from the spectral radiant flux measurements taken at 1 nm intervals over the range of 380 to 780nm.</p>

Test Result

Voltage (Vac)	Frequency (Hz)	Current (A)	Power (W)	Power Factor
120.0	60	0.051	5.8	0.947

CCT (K)	CRI	R9	Duv	SDCM	Rf	Rg	IES Rcs,h1
2772	95.0	67	0.0009	2.2	92	97	-4%

4.1 Integrating Sphere Test



Colorimetric Parameters

Chromaticity Coordinate: $x = 0.4556$ $y = 0.4120$ / $u' = 0.2591$ $v' = 0.5273$ ($duv = 9.14e-04$)

CCT= 2772K Prcp WL: Ld=583.5nm Purity=60.4%

Peak WL: Lp=622nm FWHM: =143.0nm Ratio: R=26.3% G=70.9% B=2.9%

Render Index: Ra = 95.0 AvgR = 93.2 TM30: Rf=93 Rg=98

EEI: 0.13615 A+

R1 =96 R2 =99 R3 =98 R4 =96 R5 =96 R6 =97 R7 =92

R8 =84 R9 =67 R10=98 R11=99 R12=87 R13=97 R14=100 R15=91

4.1 Integrating Sphere Test

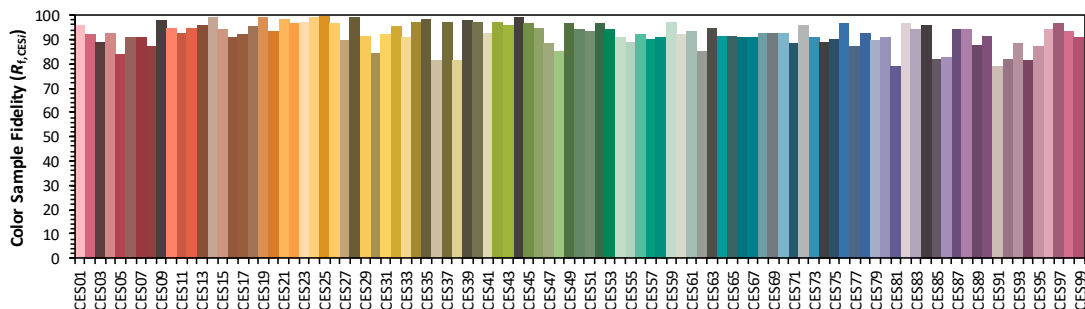
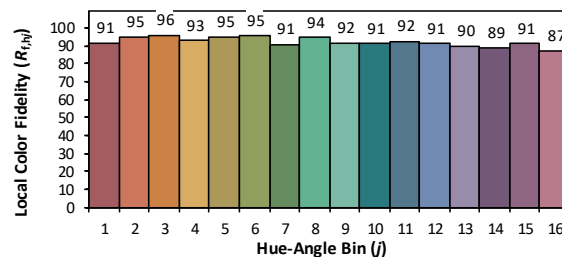
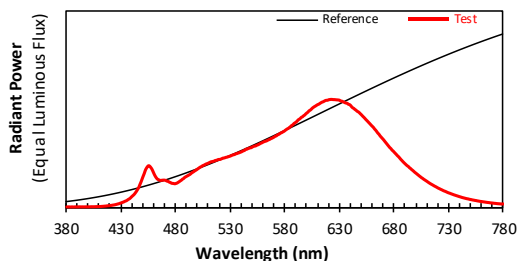
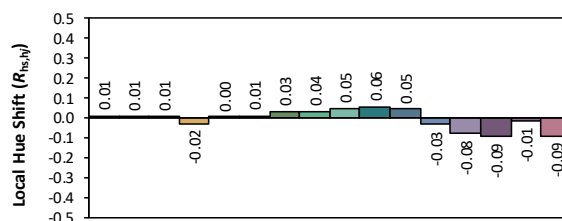
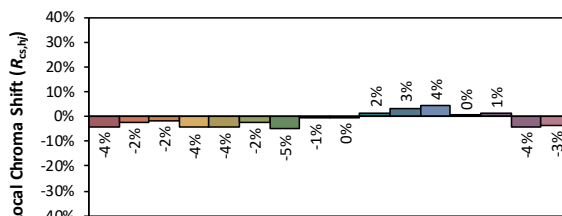
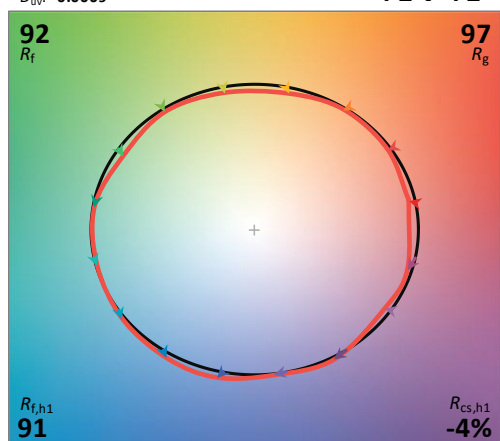
ANSI/IES TM-30-24 Color Rendition Report

Source: BXR-V-TR-2750G-20A0-A-2x
Date: 2025/12/10
Notes: N/A

Make: RAB Lighting Inc.
Model: PIVOTMB @6W2700K
Other: N/A

CCT: 2771 K
 D_{uv} : 0.0009

P2 V- F2



TM-30 Advanced Calculator Version 2.04

Created

2025/12/10

4.1 Integrating Sphere Test

Spectral Distribution over Visible Wavelength											
WL (nm)	Radiant (W/nm)	WL (nm)	Radiant (W/nm)	WL (nm)	Radiant (W/nm)	WL (nm)	Radiant (W/nm)	WL (nm)	Radiant (W/nm)	WL (nm)	Radiant (W/nm)
380	1.00E-03	447	2.09E-01	514	4.24E-01	581	7.18E-01	648	8.76E-01	715	2.06E-01
381	1.10E-03	448	2.33E-01	515	4.26E-01	582	7.25E-01	649	8.66E-01	716	2.00E-01
382	1.40E-03	449	2.60E-01	516	4.32E-01	583	7.30E-01	650	8.56E-01	717	1.94E-01
383	3.00E-04	450	2.87E-01	517	4.33E-01	584	7.39E-01	651	8.45E-01	718	1.89E-01
384	7.00E-04	451	3.12E-01	518	4.37E-01	585	7.47E-01	652	8.35E-01	719	1.83E-01
385	1.20E-03	452	3.42E-01	519	4.41E-01	586	7.56E-01	653	8.24E-01	720	1.77E-01
386	2.00E-04	453	3.61E-01	520	4.42E-01	587	7.62E-01	654	8.13E-01	721	1.72E-01
387	1.00E-03	454	3.76E-01	521	4.44E-01	588	7.73E-01	655	8.03E-01	722	1.67E-01
388	1.80E-03	455	3.84E-01	522	4.49E-01	589	7.81E-01	656	7.92E-01	723	1.62E-01
389	8.00E-04	456	3.78E-01	523	4.54E-01	590	7.88E-01	657	7.81E-01	724	1.58E-01
390	1.30E-03	457	3.66E-01	524	4.55E-01	591	7.97E-01	658	7.70E-01	725	1.52E-01
391	1.60E-03	458	3.51E-01	525	4.58E-01	592	8.09E-01	659	7.59E-01	726	1.48E-01
392	1.90E-03	459	3.30E-01	526	4.62E-01	593	8.15E-01	660	7.49E-01	727	1.44E-01
393	1.10E-03	460	3.07E-01	527	4.64E-01	594	8.23E-01	661	7.38E-01	728	1.40E-01
394	1.60E-03	461	2.87E-01	528	4.67E-01	595	8.33E-01	662	7.25E-01	729	1.35E-01
395	1.30E-03	462	2.71E-01	529	4.70E-01	596	8.38E-01	663	7.14E-01	730	1.31E-01
396	1.20E-03	463	2.60E-01	530	4.74E-01	597	8.48E-01	664	7.00E-01	731	1.28E-01
397	1.70E-03	464	2.54E-01	531	4.79E-01	598	8.54E-01	665	6.87E-01	732	1.24E-01
398	1.60E-03	465	2.49E-01	532	4.83E-01	599	8.65E-01	666	6.76E-01	733	1.20E-01
399	1.50E-03	466	2.47E-01	533	4.86E-01	600	8.74E-01	667	6.62E-01	734	1.16E-01
400	2.00E-03	467	2.48E-01	534	4.89E-01	601	8.82E-01	668	6.50E-01	735	1.12E-01
401	1.70E-03	468	2.49E-01	535	4.95E-01	602	8.93E-01	669	6.38E-01	736	1.09E-01
402	2.40E-03	469	2.50E-01	536	4.97E-01	603	8.99E-01	670	6.27E-01	737	1.06E-01
403	2.60E-03	470	2.49E-01	537	5.01E-01	604	9.08E-01	671	6.15E-01	738	1.02E-01
404	2.50E-03	471	2.45E-01	538	5.04E-01	605	9.18E-01	672	6.02E-01	739	9.89E-02
405	2.50E-03	472	2.40E-01	539	5.08E-01	606	9.26E-01	673	5.89E-01	740	9.57E-02
406	3.10E-03	473	2.37E-01	540	5.12E-01	607	9.33E-01	674	5.77E-01	741	9.27E-02
407	3.50E-03	474	2.31E-01	541	5.18E-01	608	9.38E-01	675	5.64E-01	742	8.93E-02
408	3.80E-03	475	2.27E-01	542	5.22E-01	609	9.45E-01	676	5.52E-01	743	8.66E-02
409	4.20E-03	476	2.21E-01	543	5.27E-01	610	9.51E-01	677	5.42E-01	744	8.38E-02
410	4.60E-03	477	2.19E-01	544	5.36E-01	611	9.56E-01	678	5.29E-01	745	8.13E-02
411	4.80E-03	478	2.18E-01	545	5.37E-01	612	9.63E-01	679	5.20E-01	746	7.85E-02
412	5.80E-03	479	2.16E-01	546	5.42E-01	613	9.69E-01	680	5.09E-01	747	7.65E-02
413	6.40E-03	480	2.19E-01	547	5.46E-01	614	9.74E-01	681	4.98E-01	748	7.46E-02
414	7.40E-03	481	2.23E-01	548	5.50E-01	615	9.78E-01	682	4.88E-01	749	7.16E-02
415	8.30E-03	482	2.29E-01	549	5.51E-01	616	9.83E-01	683	4.76E-01	750	6.99E-02
416	9.20E-03	483	2.35E-01	550	5.57E-01	617	9.89E-01	684	4.67E-01	751	6.76E-02
417	1.08E-02	484	2.43E-01	551	5.62E-01	618	9.91E-01	685	4.55E-01	752	6.52E-02
418	1.18E-02	485	2.49E-01	552	5.66E-01	619	9.91E-01	686	4.43E-01	753	6.36E-02
419	1.25E-02	486	2.59E-01	553	5.67E-01	620	9.96E-01	687	4.32E-01	754	6.13E-02
420	1.43E-02	487	2.64E-01	554	5.74E-01	621	9.98E-01	688	4.21E-01	755	6.00E-02
421	1.54E-02	488	2.75E-01	555	5.77E-01	622	9.99E-01	689	4.11E-01	756	5.75E-02
422	1.74E-02	489	2.80E-01	556	5.82E-01	623	9.99E-01	690	4.01E-01	757	5.57E-02
423	1.90E-02	490	2.87E-01	557	5.88E-01	624	9.98E-01	691	3.92E-01	758	5.38E-02
424	2.09E-02	491	2.92E-01	558	5.93E-01	625	9.97E-01	692	3.83E-01	759	5.20E-02
425	2.32E-02	492	2.98E-01	559	5.97E-01	626	9.97E-01	693	3.76E-01	760	5.09E-02
426	2.61E-02	493	3.04E-01	560	6.04E-01	627	9.95E-01	694	3.65E-01	761	4.90E-02
427	2.89E-02	494	3.13E-01	561	6.07E-01	628	9.95E-01	695	3.57E-01	762	4.78E-02
428	3.15E-02	495	3.21E-01	562	6.11E-01	629	9.93E-01	696	3.48E-01	763	4.62E-02
429	3.59E-02	496	3.26E-01	563	6.14E-01	630	9.91E-01	697	3.40E-01	764	4.46E-02
430	3.89E-02	497	3.34E-01	564	6.20E-01	631	9.84E-01	698	3.30E-01	765	4.31E-02
431	4.34E-02	498	3.40E-01	565	6.24E-01	632	9.83E-01	699	3.21E-01	766	4.19E-02
432	4.64E-02	499	3.47E-01	566	6.29E-01	633	9.78E-01	700	3.14E-01	767	4.08E-02
433	5.22E-02	500	3.54E-01	567	6.35E-01	634	9.73E-01	701	3.05E-01	768	3.89E-02
434	5.61E-02	501	3.61E-01	568	6.39E-01	635	9.68E-01	702	2.97E-01	769	3.78E-02
435	6.08E-02	502	3.69E-01	569	6.45E-01	636	9.65E-01	703	2.89E-01	770	3.68E-02
436	6.82E-02	503	3.74E-01	570	6.50E-01	637	9.63E-01	704	2.81E-01	771	3.55E-02
437	7.41E-02	504	3.81E-01	571	6.58E-01	638	9.54E-01	705	2.73E-01	772	3.42E-02
438	8.14E-02	505	3.86E-01	572	6.61E-01	639	9.51E-01	706	2.66E-01	773	3.34E-02
439	9.14E-02	506	3.90E-01	573	6.69E-01	640	9.43E-01	707	2.58E-01	774	3.19E-02
440	1.01E-01	507	3.96E-01	574	6.74E-01	641	9.31E-01	708	2.52E-01	775	3.10E-02
441	1.10E-01	508	4.01E-01	575	6.80E-01	642	9.21E-01	709	2.45E-01	776	3.02E-02
442	1.21E-01	509	4.04E-01	576	6.87E-01	643	9.15E-01	710	2.38E-01	777	2.94E-02
443	1.34E-01	510	4.09E-01	577	6.91E-01	644	9.06E-01	711	2.31E-01	778	2.83E-02
444	1.49E-01	511	4.14E-01	578	6.98E-01	645	8.99E-01	712	2.24E-01	779	2.83E-02
445	1.66E-01	512	4.19E-01	579	7.03E-01	646	8.90E-01	713	2.18E-01	780	2.84E-02
446	1.84E-01	513	4.21E-01	580	7.11E-01	647	8.84E-01	714	2.12E-01	N/A	N/A

4.0 LM-79 Measurement and Test Results

4.2 Goniophotometer Test

Model No.	PIVOTMB @6W2700K	Sample ID	250903027-S1
Operate time (Min.)	30	Stabilization time (Min.)	60
Temperature (°C)	25.0	Humidity (%RH)	42.1

Test Method
<p>The Samples were tested according to the ANSI/IES LM-79:2019.</p> <p>Photometric parameters were measured using a type C goniophotometer and software.</p> <p>The ambient temperature shall be maintained at $25 \pm 1^\circ\text{C}$, measured at a point not more than 1 m from the sample and at the same height as the sample.</p> <p>The voltage of an AC power supply (RMS voltage) or DC power supply (instantaneous voltage) applied to the device under test shall be regulated to within ± 0.2 percent under load.</p> <p>The samples were operated at rated voltage and was stabilized before measurement. Luminous flux, luminaire efficacy, zonal lumen were calculated from the software taken at 1.0° vertical intervals and 15° horizontal intervals.</p>

Test Conditions

Condition	Voltage (Vac)	Frequency (Hz)	Current (A)	Power (W)	Power Factor
WORST CASE	120.0	60	0.051	5.8	0.947
NON-WORST CASE	N/A	N/A	N/A	N/A	N/A

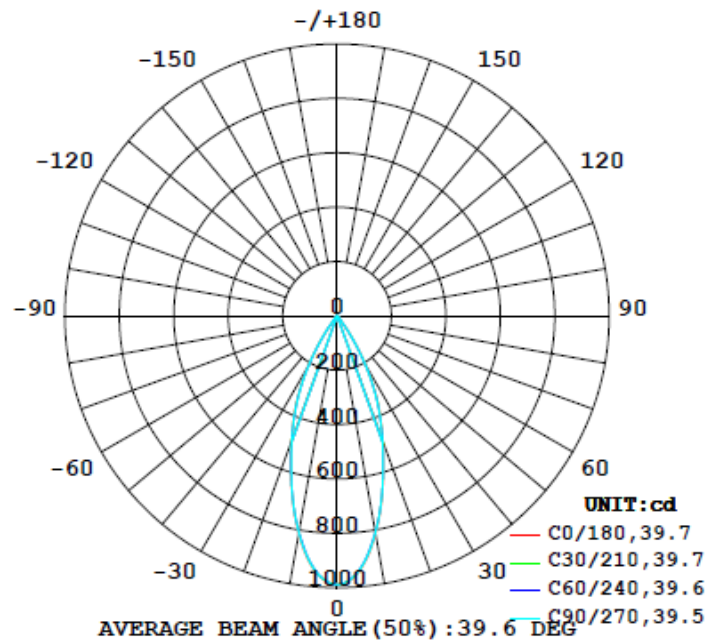
Test Result

Flux (lm)	Field Angle (10%)		Beam Angle (50%)		Luminous Efficacy (lm/W)	Zonal Lumen Requirement
	C0-180	C90-270	C0-180	C90-270		(0°-90°)
493	69.4	68.8	39.8	39.5	85.0	100.0%

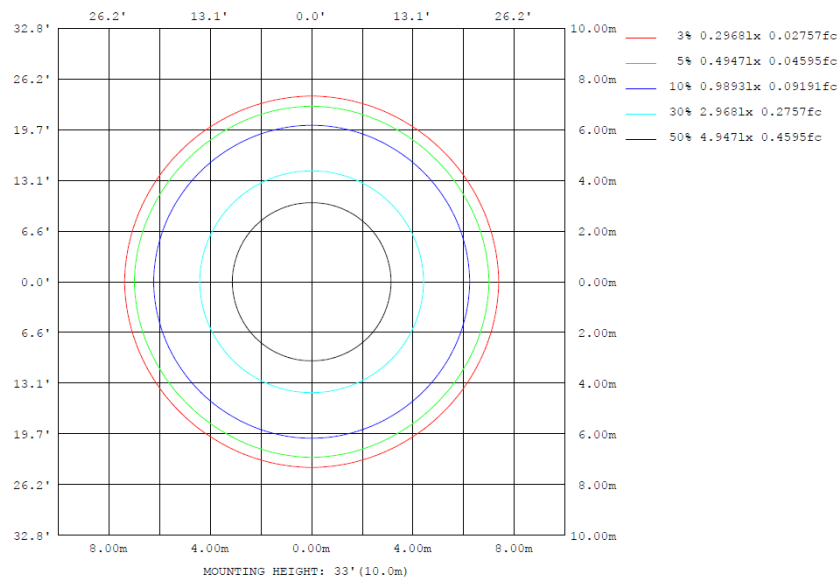
4.2 Goniophotometer Test

Lighting Distribution Curve

LUMINOUS INTENSITY DISTRIBUTION DIAGRAM



Isolux Plot



4.2 Goniophotometer Test

Zonal Lumen Summary

γ	C0	C45	C90	C135	C180	C225	C270	C315	γ	Φ zone	Φ total	ℓlum, lamp
10	814.6	808.6	810.8	808.6	814.6	808.6	810.8	808.6	0- 10	85.46	85.46	17.3,17.3
20	490.6	489.8	487.0	489.8	490.6	489.8	487.0	489.8	10- 20	178.8	264.2	53.6,53.6
30	214.6	210.4	205.5	210.4	214.6	210.4	205.5	210.4	20- 30	158.4	422.7	85.8,85.8
40	20.81	20.43	20.30	20.43	20.81	20.43	20.30	20.43	30- 40	55.14	477.8	96.9,96.9
50	7.850	8.057	7.852	8.057	7.850	8.057	7.852	8.057	40- 50	8.804	486.6	98.7,98.7
60	2.911	2.897	2.779	2.897	2.911	2.897	2.779	2.897	50- 60	4.752	491.4	99.7,99.7
70	0.3949	0.3972	0.4105	0.3972	0.3949	0.3972	0.4105	0.3972	60- 70	1.422	492.8	100,100
80	0.0284	0.0253	0.0219	0.0253	0.0284	0.0253	0.0219	0.0253	70- 80	0.0862	492.9	100,100
90	0	0	0	0	0	0	0	0	80- 90	0.0102	492.9	100,100
100	0	0	0	0	0	0	0	0	90-100	0	492.9	100,100
110	0	0	0	0	0	0	0	0	100-110	0	492.9	100,100
120	0	0	0	0	0	0	0	0	110-120	0	492.9	100,100
130	0	0	0	0	0	0	0	0	120-130	0	492.9	100,100
140	0	0	0	0	0	0	0	0	130-140	0	492.9	100,100
150	0	0	0	0	0	0	0	0	140-150	0	492.9	100,100
160	0	0	0	0	0	0	0	0	150-160	0	492.9	100,100
170	0	0	0	0	0	0	0	0	160-170	0	492.9	100,100
180	0	0	0	0	0	0	0	0	170-180	0	492.9	100,100
DEG	LUMINOUS INTENSITY:cd									UNIT:lm		

	Zonal (lm)		Total (lm)	Percent
0-10	85.46	0-10	85.46	17.34%
10-20	178.79	0-20	264.25	53.61%
20-30	158.43	0-30	422.68	85.76%
30-40	55.14	0-40	477.82	96.94%
40-50	8.80	0-50	486.62	98.73%
50-60	4.75	0-60	491.37	99.69%
60-70	1.42	0-70	492.79	99.98%
70-80	0.09	0-80	492.88	100.00%
80-90	0.01	0-90	492.89	100.00%
90-100	0.00	0-100	492.89	100.00%
100-110	0.00	0-110	492.89	100.00%
110-120	0.00	0-120	492.89	100.00%
120-130	0.00	0-130	492.89	100.00%
130-140	0.00	0-140	492.89	100.00%
140-150	0.00	0-150	492.89	100.00%
150-160	0.00	0-160	492.89	100.00%
160-170	0.00	0-170	492.89	100.00%
170-180	0.00	0-180	492.89	100.00%

4.2 Goniophotometer Test

Luminous Distribution Intensity Data

Table--1

UNIT: cd

C (DEG) y (DEG)	0	15	30	45	60	75	90	105	120	135	150	165	180	195	210	225	240	255	270
0	989	989	989	989	989	989	989	989	989	989	989	989	989	989	989	989	989	989	989
5	942	941	940	939	938	938	939	938	938	939	940	941	942	941	940	939	938	938	939
10	815	813	810	809	809	809	811	809	809	809	810	813	815	813	810	809	809	809	811
15	649	649	648	648	646	647	647	647	646	648	648	649	649	649	648	648	646	647	647
20	491	490	491	490	489	488	487	488	489	490	491	490	491	490	491	490	489	488	487
25	356	355	353	351	350	349	348	349	350	351	353	355	356	355	353	351	350	349	348
30	215	213	212	210	209	207	205	207	209	210	212	213	215	213	212	210	209	207	205
35	89.6	85.7	81.6	78.9	78.7	80.6	82.8	80.6	78.7	78.9	81.6	85.7	89.6	85.7	81.6	78.9	78.7	80.6	82.8
40	20.8	20.7	20.5	20.4	20.3	20.2	20.3	20.2	20.3	20.4	20.5	20.7	20.8	20.7	20.5	20.4	20.3	20.2	20.3
45	10.4	10.6	10.7	10.7	10.7	10.6	10.5	10.6	10.7	10.7	10.7	10.6	10.4	10.6	10.7	10.7	10.6	10.5	10.4
50	7.85	7.94	8.05	8.06	7.98	7.90	7.85	7.90	7.98	8.06	8.05	7.94	7.85	7.94	8.05	8.06	7.98	7.90	7.85
55	5.30	5.38	5.41	5.39	5.29	5.19	5.17	5.19	5.29	5.39	5.41	5.38	5.30	5.38	5.41	5.39	5.29	5.19	5.17
60	2.91	2.93	2.94	2.90	2.85	2.81	2.78	2.81	2.85	2.90	2.94	2.93	2.91	2.93	2.94	2.90	2.85	2.81	2.78
65	1.36	1.37	1.38	1.36	1.34	1.35	1.32	1.35	1.34	1.36	1.38	1.37	1.36	1.37	1.38	1.36	1.34	1.35	1.32
70	0.39	0.40	0.40	0.40	0.38	0.38	0.41	0.38	0.38	0.40	0.40	0.40	0.39	0.40	0.40	0.40	0.38	0.38	0.41
75	0.05	0.05	0.05	0.05	0.04	0.04	0.04	0.04	0.04	0.05	0.05	0.05	0.05	0.05	0.05	0.05	0.04	0.04	0.04
80	0.03	0.03	0.03	0.03	0.02	0.02	0.02	0.02	0.02	0.03	0.03	0.03	0.03	0.03	0.03	0.03	0.02	0.02	0.02
85	0.01	0.01	0.01	0.01	0.01	0.01	0.01	0.01	0.01	0.01	0.01	0.01	0.01	0.01	0.01	0.01	0.01	0.01	0.01
90	0.00	0.00	0.00	0.00	0.00	0.00	0.00	0.00	0.00	0.00	0.00	0.00	0.00	0.00	0.00	0.00	0.00	0.00	0.00
95	0.00	0.00	0.00	0.00	0.00	0.00	0.00	0.00	0.00	0.00	0.00	0.00	0.00	0.00	0.00	0.00	0.00	0.00	0.00
100	0.00	0.00	0.00	0.00	0.00	0.00	0.00	0.00	0.00	0.00	0.00	0.00	0.00	0.00	0.00	0.00	0.00	0.00	0.00
105	0.00	0.00	0.00	0.00	0.00	0.00	0.00	0.00	0.00	0.00	0.00	0.00	0.00	0.00	0.00	0.00	0.00	0.00	0.00
110	0.00	0.00	0.00	0.00	0.00	0.00	0.00	0.00	0.00	0.00	0.00	0.00	0.00	0.00	0.00	0.00	0.00	0.00	0.00
115	0.00	0.00	0.00	0.00	0.00	0.00	0.00	0.00	0.00	0.00	0.00	0.00	0.00	0.00	0.00	0.00	0.00	0.00	0.00
120	0.00	0.00	0.00	0.00	0.00	0.00	0.00	0.00	0.00	0.00	0.00	0.00	0.00	0.00	0.00	0.00	0.00	0.00	0.00
125	0.00	0.00	0.00	0.00	0.00	0.00	0.00	0.00	0.00	0.00	0.00	0.00	0.00	0.00	0.00	0.00	0.00	0.00	0.00
130	0.00	0.00	0.00	0.00	0.00	0.00	0.00	0.00	0.00	0.00	0.00	0.00	0.00	0.00	0.00	0.00	0.00	0.00	0.00
135	0.00	0.00	0.00	0.00	0.00	0.00	0.00	0.00	0.00	0.00	0.00	0.00	0.00	0.00	0.00	0.00	0.00	0.00	0.00
140	0.00	0.00	0.00	0.00	0.00	0.00	0.00	0.00	0.00	0.00	0.00	0.00	0.00	0.00	0.00	0.00	0.00	0.00	0.00
145	0.00	0.00	0.00	0.00	0.00	0.00	0.00	0.00	0.00	0.00	0.00	0.00	0.00	0.00	0.00	0.00	0.00	0.00	0.00
150	0.00	0.00	0.00	0.00	0.00	0.00	0.00	0.00	0.00	0.00	0.00	0.00	0.00	0.00	0.00	0.00	0.00	0.00	0.00
155	0.00	0.00	0.00	0.00	0.00	0.00	0.00	0.00	0.00	0.00	0.00	0.00	0.00	0.00	0.00	0.00	0.00	0.00	0.00
160	0.00	0.00	0.00	0.00	0.00	0.00	0.00	0.00	0.00	0.00	0.00	0.00	0.00	0.00	0.00	0.00	0.00	0.00	0.00
165	0.00	0.00	0.00	0.00	0.00	0.00	0.00	0.00	0.00	0.00	0.00	0.00	0.00	0.00	0.00	0.00	0.00	0.00	0.00
170	0.00	0.00	0.00	0.00	0.00	0.00	0.00	0.00	0.00	0.00	0.00	0.00	0.00	0.00	0.00	0.00	0.00	0.00	0.00
175	0.00	0.00	0.00	0.00	0.00	0.00	0.00	0.00	0.00	0.00	0.00	0.00	0.00	0.00	0.00	0.00	0.00	0.00	0.00
180	0.00	0.00	0.00	0.00	0.00	0.00	0.00	0.00	0.00	0.00	0.00	0.00	0.00	0.00	0.00	0.00	0.00	0.00	0.00

Table--2

UNIT: cd

C (DEG) y (DEG)	285	300	315	330	345														
0	989	989	989	989	989														
5	938	938	939	940	941														
10	809	809	809	810	813														
15	647	646	648	648	649														
20	488	489	490	491	490														
25	349	350	351	353	355														
30	207	209	210	212	213														
35	80.6	78.7	78.9	81.6	85.7														
40	20.2	20.3	20.4	20.5	20.7														
45	10.6	10.7	10.7	10.7	10.6														
50	7.90	7.98	8.06	8.05	7.94														
55	5.19	5.29	5.39	5.41	5.38														
60	2.81	2.85	2.90	2.94	2.93														
65	1.35	1.34	1.36	1.38	1.37														
70	0.38	0.38	0.40	0.40	0.40														
75	0.04	0.04	0.05	0.05	0.05														
80	0.02	0.02	0.03	0.03	0.03														
85	0.01	0.01	0.01	0.01	0.01														
90	0.00	0.00	0.00	0.00	0.00														
95	0.00	0.00	0.00	0.00	0.00														
100	0.00	0.00	0.00	0.00	0.00														
105	0.00	0.00	0.00	0.00	0.00														
110	0.00	0.00	0.00	0.00	0.00														
115	0.00	0.00	0.00	0.00	0.00														
120	0.00	0.00	0.00	0.00	0.00														
125	0.00	0.00	0.00	0.00	0.00														
130	0.00	0.00	0.00	0.00	0.00														
135	0.00	0.00	0.00	0.00	0.00														
140	0.00	0.00	0.00	0.00	0.00														
145	0.00	0.00	0.00	0.00	0.00														
150	0.00	0.00	0.00	0.00	0.00														
155	0.00	0.00	0.00	0.00	0.00														
160	0.00	0.00	0.00	0.00	0.00														
165	0.00	0.00	0.00	0.00	0.00														
170	0.00	0.00	0.00	0.00	0.00														
175	0.00	0.00	0.00	0.00	0.00														
180	0.00	0.00	0.00	0.00	0.00														

4.0 LM-79 Measurement and Test Results

4.3 THD and PF Test

Model No.	PIVOTMB @6W2700K	Sample ID	250903027-S1
Temperature (°C)	25.4	Humidity (%RH)	41.0

Test Method
<p>The samples were tested according to the and ANSI C82.77: 2002 and ANSI C82.77-10:2020</p> <p>The total harmonic distortion shall be measured to the 40th order.</p> <p>The ambient temperature shall be maintained at $25 \pm 1^\circ\text{C}$. The sample measurements were made using a digital power meter and power supply. The sample was operated at rated voltage and was stabilized before measurement. The total harmonic distortion was calculated.</p>

Test Results

Voltage (Vac)	Frequency (Hz)	Current (A)	Power (W)	Power Factor	iTHD(%)
120.0	60	0.051	5.8	0.947	14.20

5.0 Equipment List:

Equipment ID	Equipment Name	Last Cal.	Due Cal.
NTC-F01-001	Goniophotometer System	2025-11-06	2026-11-05
NTC-F01-006	2.0 meter Integrating Sphere	2025-11-06	2026-11-05
NTC-F01-012	Standard Lamp	2025-10-27	2026-10-26
NTC-F01-013	Standard Lamp	2025-10-27	2026-10-26
NTC-F01-031	Digital Power Meter	2025-08-04	2026-08-03
NTC-F01-019	Temperature & Humidity Meter	2025-10-23	2026-10-22

*****End of Report*****