

Photometric Test Report

Relevant Standards

- ☒ ANSI/IES LM-79-19
- ☒ ANSI C82.77-2020

Prepared For

RAB Lighting Inc.

Address: 408 W 14th St New York, NY 10014

Prepared By

Dongguan New Testing Centre Co., Ltd.

Address: 3F No. 1 the 1st North Industry Road, Songshan Lake Science & Technology Park, Dongguan, Guangdong, China

Prepare by:

Alan Wang

Engineer: Alan Wang

Date: 2025-12-10

Review by:

Vincent Yuan

Technical Lead: Vincent Yuan

Issue Date: 2025-12-10

Revised Date: N/A

1.0 Test Summary

DLC Technical Requirements V6.0

Track or Mono-Point Luminaires				
Requirement Category	Test Method	Requirements		Test Value
Luminaire Output (lm) (Goniophotometer – Section 4.2)	ANSI/IES LM-79-19	≥250lm		716
Minimum Luminaire Efficacy (lm/W) (Goniophotometer – Section 4.2)	ANSI/IES LM-79-19	Standard	Premium	91.8
		95	110	
Power (Input Wattage) (W) (Goniophotometer – Section 4.2)	ANSI/IES LM-79-19	Worst Case		7.8
Total Harmonic Distortion (A%) (THD & PF – Section 4.3)	ANSI C82.77:2002 ANSI C82-77-10:2020	20.00%	120V	12.86
Power Factor (THD & PF – Section 4.3)	ANSI C82.77:2002 ANSI C82-77-10:2020	0.9	120V	0.966
Allowable CCTs* (K) (Integrating Sphere – Section 4.1)	ANSI/IES LM-79-19	7 steps	3465±245	3539
		4 steps	3465±124	
Chromaticity (D _{uv}) (Integrating Sphere – Section 4.1)	ANSI/IES LM-79-19	7 steps	0.0005±0.0060	-0.0012
		4 steps	0.0005±0.0033	
Minimum CRI (Integrating Sphere – Section 4.1)	ANSI/IES LM-79 19 CIE13.3-1995	≥80		95.6
Minimum R9 (Integrating Sphere – Section 4.1)	ANSI/IES LM-79-19 CIE13.3-1995	≥0		77
Minimum Rf (Integrating Sphere – Section 4.1)	ANSI/IES TM-30-24	≥70		91
Minimum Rg (Integrating Sphere – Section 4.1)	ANSI/IES TM-30-24	≥89		98
IES Rcs,h1 (Integrating Sphere – Section 4.1)	ANSI/IES TM-30-24	-12%≤IES Rcs,h1≤+23%		-3%
Zonal Lumen Requirement (0°-90°) (Goniophotometer – Section 4.2)	ANSI/IES LM-79-19	≥ 85%		100.0%
Input Voltage (V)				
(Goniophotometer – Section 4.2)	ANSI/IES LM-79-19	Worst Cast		120.0
(Goniophotometer – Section 4.2)		Non-Worst Case		N/A
Input Current (A)				
(Goniophotometer – Section 4.2)	ANSI/IES LM-79-19	Worst Case		0.067
(Goniophotometer – Section 4.2)		Non-Worst Case		N/A
Power (Input Wattage – W)				
(Goniophotometer – Section 4.2)	ANSI/IES LM-79-19	Worst Case		7.8
(Goniophotometer – Section 4.2)		Non-Worst Case		N/A

2.0 Test List

Test Item	Test	Test Date	Model Number	Build Level	Sample No.
1	Integrating Sphere Test	2025-12-08	PIVOTMB @8W3500K	-	250903027-S1
2	Goniophotometer Test	2025-12-08	PIVOTMB @8W3500K	-	250903027-S1
3	THD and PF Test	2025-12-08	PIVOTMB @8W3500K	-	250903027-S1

Remark (If any):

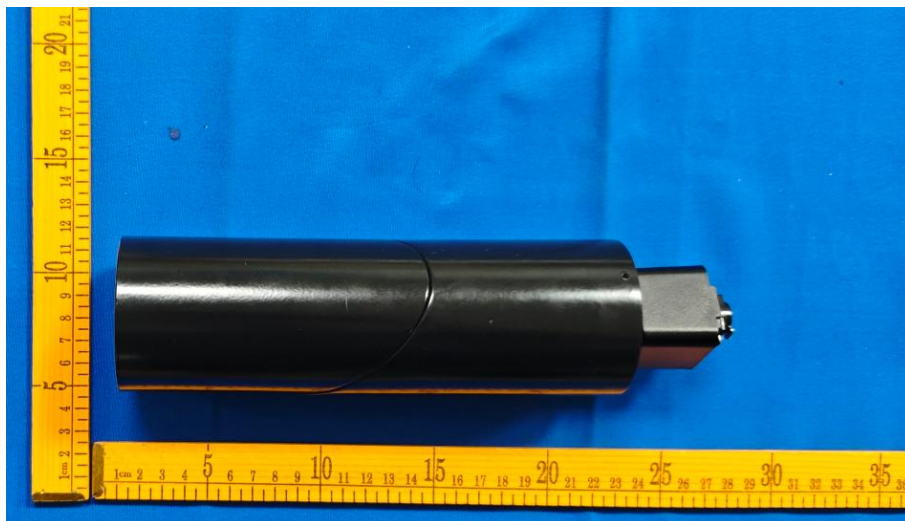
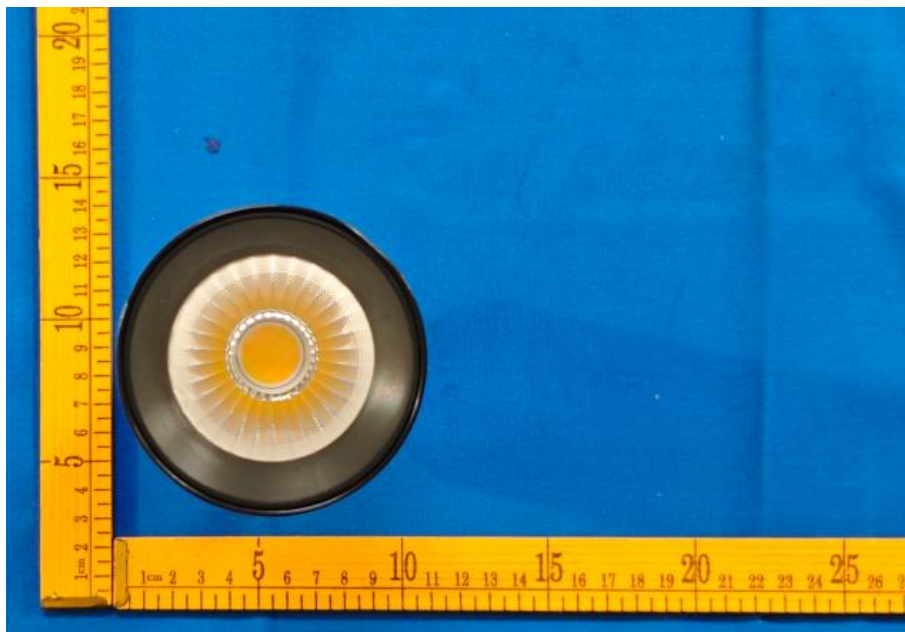
1. The results contained in this report pertain only to the tested samples.
2. This report shall not be reproduced, no limited part or full, without approval of Dongguan New Testing Centre Co., Ltd.
3. This report must not be used by the client to claim product certification, approval, or endorsement by NVLAP, NIST or any agency of the U.S. Government.

3.0 Product Description

Luminaire Description: Model No. PIVOTMB @8W3500K, color tunable from 2700K, 3000K, 3500K, 4000K and 5000K.

Electrical Specification: 120Vac, 60Hz

Photos of Luminaire Characteristics



4.0 LM-79 Measurement and Test Results

4.1 Integrating Sphere Test

Model No.	PIVOTMB @8W3500K	Sample ID	250903027-S1
Operate time (Min.)	10	Stabilization time (Min.)	60
Temperature (°C)	25.4	Humidity (%RH)	41.0

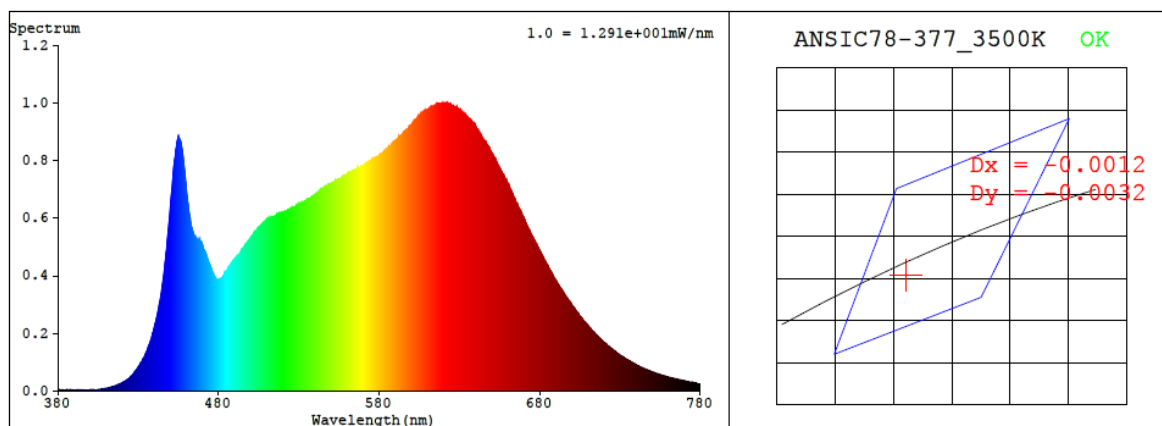
Test Method
<p>The Samples were tested according to the ANSI/IES LM-79:2019.</p> <p>Photometric parameters were measured using an integrating sphere, a spectroradiometer and software. The ambient temperature condition inside the sphere was maintained at 25±1°C.</p> <p>The sample measurements were made using a spectroradiometer connected by a fiber optic cable and detector through the detector port of the integrating sphere.</p> <p>The voltage of an AC power supply (RMS voltage) or DC power supply (instantaneous voltage) applied to the device under test shall be regulated to within ±0.2 percent under load.</p> <p>The sample was measured using 4π geometry and operated at rated voltage and was stabilized before measurement. Chromaticity coordinates, correlated color temperature and color rendering index were calculated from the spectral radiant flux measurements taken at 1 nm intervals over the range of 380 to 780nm.</p>

Test Result

Voltage (Vac)	Frequency (Hz)	Current (A)	Power (W)	Power Factor
120.0	60	0.067	7.8	0.966

CCT (K)	CRI	R9	Duv	SDCM	Rf	Rg	IES Rcs,h1
3539	95.6	77	-0.0012	2.9	91	98	-3%

4.1 Integrating Sphere Test



Colorimetric Parameters

Chromaticity Coordinate: $x = 0.4020$ $y = 0.3864$ / $u' = 0.2353$ $v' = 0.5089$ ($duv = -1.17e-03$)

CCT= 3539K Prcp WL: $L_d = 581.3\text{nm}$ Purity=36.6%

Peak WL: $L_p = 622\text{nm}$ FWHM: $= 182.5\text{nm}$ Ratio: R=22.1% G=73.7% B=4.2%

Render Index: $R_a = 95.6$ AvgR = 94.2 TM30: $R_f = 93$ $R_g = 99$

EEL: 0.13650 A+

R1 =98 R2 =99 R3 =98 R4 =95 R5 =97 R6 =96 R7 =93

R8 =89 R9 =77 R10=100 R11=98 R12=80 R13=99 R14=100 R15=95

4.1 Integrating Sphere Test

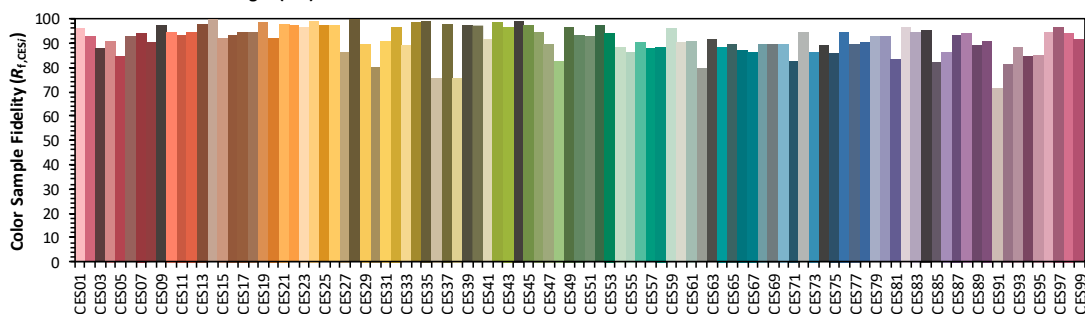
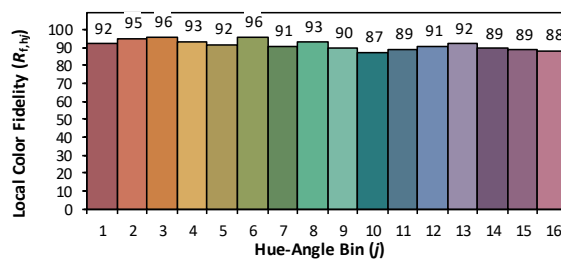
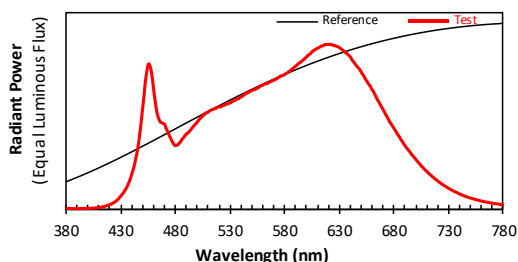
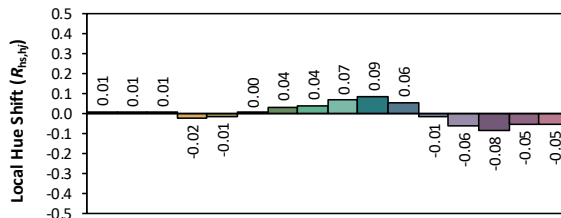
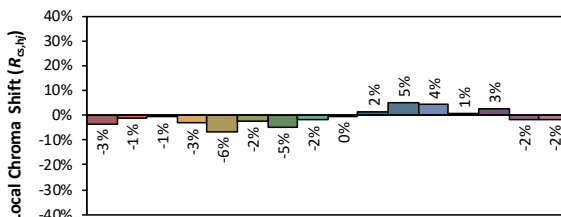
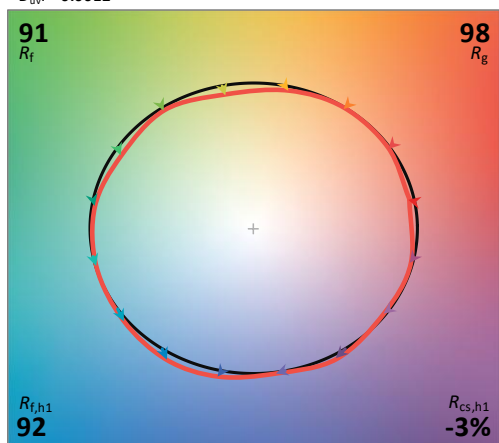
ANSI/IES TM-30-24 Color Rendition Report

Source: BXRV-TR-2750G-20A0-A-2x
Date: 2025/12/10
Notes: N/A

Make: RAB Lighting Inc.
Model: PIVOTMB @8W3500K
Other: N/A

CCT: 3539 K
 D_{uv} : -0.0012

P2 V- F2



TM-30 Advanced Calculator Version 2.04

Created

2025/12/10

4.1 Integrating Sphere Test

Spectral Distribution over Visible Wavelength											
WL (nm)	Radiant (W/nm)	WL (nm)	Radiant (W/nm)	WL (nm)	Radiant (W/nm)	WL (nm)	Radiant (W/nm)	WL (nm)	Radiant (W/nm)	WL (nm)	Radiant (W/nm)
380	2.50E-03	447	4.64E-01	514	6.04E-01	581	8.23E-01	648	8.49E-01	715	1.95E-01
381	3.70E-03	448	5.18E-01	515	6.06E-01	582	8.25E-01	649	8.39E-01	716	1.91E-01
382	2.80E-03	449	5.81E-01	516	6.11E-01	583	8.31E-01	650	8.28E-01	717	1.85E-01
383	3.90E-03	450	6.42E-01	517	6.12E-01	584	8.36E-01	651	8.18E-01	718	1.80E-01
384	2.40E-03	451	7.04E-01	518	6.17E-01	585	8.40E-01	652	8.08E-01	719	1.75E-01
385	2.30E-03	452	7.75E-01	519	6.20E-01	586	8.48E-01	653	7.97E-01	720	1.69E-01
386	2.20E-03	453	8.20E-01	520	6.19E-01	587	8.51E-01	654	7.84E-01	721	1.65E-01
387	3.40E-03	454	8.61E-01	521	6.19E-01	588	8.58E-01	655	7.75E-01	722	1.59E-01
388	3.80E-03	455	8.81E-01	522	6.24E-01	589	8.63E-01	656	7.64E-01	723	1.54E-01
389	3.00E-03	456	8.71E-01	523	6.27E-01	590	8.69E-01	657	7.54E-01	724	1.50E-01
390	2.50E-03	457	8.49E-01	524	6.28E-01	591	8.73E-01	658	7.45E-01	725	1.46E-01
391	2.10E-03	458	8.10E-01	525	6.34E-01	592	8.81E-01	659	7.32E-01	726	1.41E-01
392	2.90E-03	459	7.59E-01	526	6.37E-01	593	8.85E-01	660	7.22E-01	727	1.38E-01
393	2.50E-03	460	7.01E-01	527	6.36E-01	594	8.88E-01	661	7.12E-01	728	1.33E-01
394	2.80E-03	461	6.52E-01	528	6.39E-01	595	8.96E-01	662	6.98E-01	729	1.29E-01
395	3.50E-03	462	6.09E-01	529	6.43E-01	596	9.00E-01	663	6.86E-01	730	1.25E-01
396	3.00E-03	463	5.72E-01	530	6.44E-01	597	9.07E-01	664	6.71E-01	731	1.21E-01
397	3.50E-03	464	5.52E-01	531	6.49E-01	598	9.10E-01	665	6.59E-01	732	1.18E-01
398	3.50E-03	465	5.37E-01	532	6.55E-01	599	9.19E-01	666	6.49E-01	733	1.14E-01
399	3.50E-03	466	5.26E-01	533	6.56E-01	600	9.24E-01	667	6.36E-01	734	1.10E-01
400	3.70E-03	467	5.24E-01	534	6.59E-01	601	9.32E-01	668	6.25E-01	735	1.07E-01
401	3.80E-03	468	5.19E-01	535	6.65E-01	602	9.38E-01	669	6.12E-01	736	1.04E-01
402	4.40E-03	469	5.16E-01	536	6.66E-01	603	9.41E-01	670	6.02E-01	737	1.01E-01
403	4.80E-03	470	5.09E-01	537	6.69E-01	604	9.48E-01	671	5.88E-01	738	9.74E-02
404	4.90E-03	471	4.88E-01	538	6.72E-01	605	9.56E-01	672	5.76E-01	739	9.43E-02
405	5.60E-03	472	4.76E-01	539	6.78E-01	606	9.59E-01	673	5.64E-01	740	9.09E-02
406	6.30E-03	473	4.60E-01	540	6.81E-01	607	9.65E-01	674	5.53E-01	741	8.78E-02
407	7.10E-03	474	4.44E-01	541	6.86E-01	608	9.68E-01	675	5.39E-01	742	8.52E-02
408	7.70E-03	475	4.32E-01	542	6.90E-01	609	9.73E-01	676	5.26E-01	743	8.23E-02
409	8.60E-03	476	4.17E-01	543	6.95E-01	610	9.76E-01	677	5.19E-01	744	7.97E-02
410	9.60E-03	477	4.04E-01	544	7.01E-01	611	9.78E-01	678	5.07E-01	745	7.74E-02
411	1.06E-02	478	3.94E-01	545	7.02E-01	612	9.83E-01	679	4.98E-01	746	7.49E-02
412	1.15E-02	479	3.85E-01	546	7.07E-01	613	9.87E-01	680	4.87E-01	747	7.26E-02
413	1.30E-02	480	3.87E-01	547	7.08E-01	614	9.89E-01	681	4.76E-01	748	7.04E-02
414	1.52E-02	481	3.86E-01	548	7.15E-01	615	9.90E-01	682	4.65E-01	749	6.84E-02
415	1.62E-02	482	3.91E-01	549	7.17E-01	616	9.95E-01	683	4.54E-01	750	6.61E-02
416	1.83E-02	483	4.00E-01	550	7.18E-01	617	9.98E-01	684	4.45E-01	751	6.46E-02
417	2.11E-02	484	4.05E-01	551	7.23E-01	618	9.97E-01	685	4.35E-01	752	6.23E-02
418	2.33E-02	485	4.16E-01	552	7.26E-01	619	9.98E-01	686	4.23E-01	753	5.99E-02
419	2.52E-02	486	4.27E-01	553	7.26E-01	620	9.99E-01	687	4.13E-01	754	5.86E-02
420	2.80E-02	487	4.32E-01	554	7.34E-01	621	9.98E-01	688	4.04E-01	755	5.66E-02
421	3.10E-02	488	4.43E-01	555	7.34E-01	622	9.99E-01	689	3.93E-01	756	5.44E-02
422	3.46E-02	489	4.51E-01	556	7.38E-01	623	9.95E-01	690	3.83E-01	757	5.36E-02
423	3.85E-02	490	4.58E-01	557	7.43E-01	624	9.95E-01	691	3.74E-01	758	5.17E-02
424	4.26E-02	491	4.60E-01	558	7.48E-01	625	9.92E-01	692	3.65E-01	759	4.94E-02
425	4.78E-02	492	4.70E-01	559	7.49E-01	626	9.91E-01	693	3.57E-01	760	4.81E-02
426	5.31E-02	493	4.75E-01	560	7.53E-01	627	9.87E-01	694	3.50E-01	761	4.67E-02
427	5.93E-02	494	4.84E-01	561	7.57E-01	628	9.86E-01	695	3.40E-01	762	4.51E-02
428	6.64E-02	495	4.93E-01	562	7.60E-01	629	9.82E-01	696	3.31E-01	763	4.38E-02
429	7.46E-02	496	5.00E-01	563	7.59E-01	630	9.78E-01	697	3.23E-01	764	4.25E-02
430	8.29E-02	497	5.09E-01	564	7.63E-01	631	9.73E-01	698	3.15E-01	765	4.11E-02
431	9.15E-02	498	5.15E-01	565	7.66E-01	632	9.68E-01	699	3.08E-01	766	4.01E-02
432	9.90E-02	499	5.22E-01	566	7.70E-01	633	9.62E-01	700	2.99E-01	767	3.92E-02
433	1.11E-01	500	5.32E-01	567	7.74E-01	634	9.58E-01	701	2.91E-01	768	3.74E-02
434	1.21E-01	501	5.40E-01	568	7.75E-01	635	9.51E-01	702	2.83E-01	769	3.61E-02
435	1.33E-01	502	5.48E-01	569	7.81E-01	636	9.45E-01	703	2.76E-01	770	3.48E-02
436	1.48E-01	503	5.54E-01	570	7.83E-01	637	9.42E-01	704	2.69E-01	771	3.38E-02
437	1.63E-01	504	5.61E-01	571	7.86E-01	638	9.34E-01	705	2.59E-01	772	3.29E-02
438	1.79E-01	505	5.69E-01	572	7.88E-01	639	9.29E-01	706	2.54E-01	773	3.22E-02
439	2.00E-01	506	5.73E-01	573	7.94E-01	640	9.21E-01	707	2.46E-01	774	3.08E-02
440	2.22E-01	507	5.80E-01	574	7.98E-01	641	9.09E-01	708	2.39E-01	775	3.07E-02
441	2.44E-01	508	5.83E-01	575	8.01E-01	642	8.99E-01	709	2.34E-01	776	2.89E-02
442	2.68E-01	509	5.85E-01	576	8.08E-01	643	8.91E-01	710	2.28E-01	777	2.81E-02
443	3.00E-01	510	5.91E-01	577	8.08E-01	644	8.81E-01	711	2.20E-01	778	2.69E-02
444	3.31E-01	511	5.95E-01	578	8.11E-01	645	8.73E-01	712	2.15E-01	779	2.68E-02
445	3.68E-01	512	5.99E-01	579	8.12E-01	646	8.64E-01	713	2.08E-01	780	2.69E-02
446	4.11E-01	513	6.03E-01	580	8.18E-01	647	8.57E-01	714	2.03E-01	N/A	N/A

4.0 LM-79 Measurement and Test Results

4.2 Goniophotometer Test

Model No.	PIVOTMB @8W3500K	Sample ID	250903027-S1
Operate time (Min.)	30	Stabilization time (Min.)	60
Temperature (°C)	25.0	Humidity (%RH)	42.1

Test Method
<p>The Samples were tested according to the ANSI/IES LM-79:2019.</p> <p>Photometric parameters were measured using a type C goniophotometer and software.</p> <p>The ambient temperature shall be maintained at $25 \pm 1^\circ\text{C}$, measured at a point not more than 1 m from the sample and at the same height as the sample.</p> <p>The voltage of an AC power supply (RMS voltage) or DC power supply (instantaneous voltage) applied to the device under test shall be regulated to within ± 0.2 percent under load.</p> <p>The samples were operated at rated voltage and was stabilized before measurement. Luminous flux, luminaire efficacy, zonal lumen were calculated from the software taken at 1.0° vertical intervals and 15° horizontal intervals.</p>

Test Conditions

Condition	Voltage (Vac)	Frequency (Hz)	Current (A)	Power (W)	Power Factor
WORST CASE	120.0	60	0.067	7.8	0.966
NON-WORST CASE	N/A	N/A	N/A	N/A	N/A

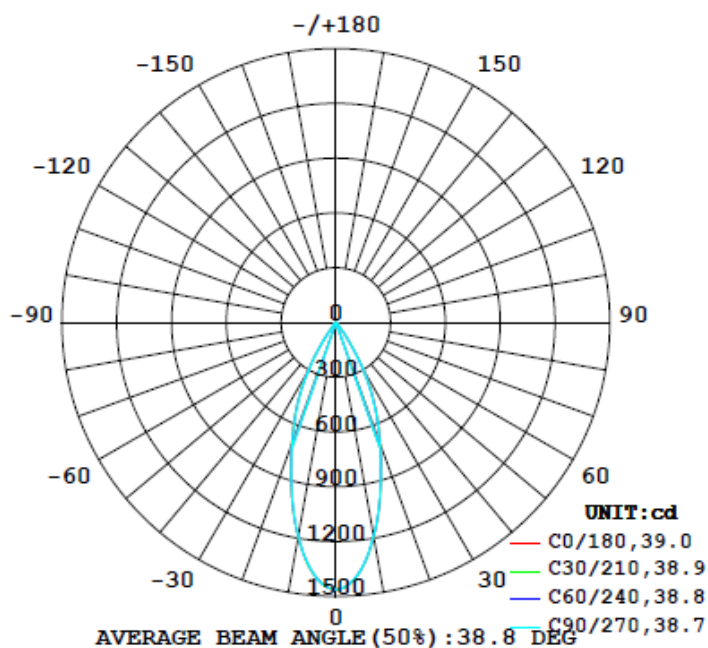
Test Result

Flux (lm)	Field Angle (10%)		Beam Angle (50%)		Luminous Efficacy (lm/W)	Zonal Lumen Requirement
	C0-180	C90-270	C0-180	C90-270		(0°-90°)
716	69.0	68.4	39.0	38.7	91.8	100.0%

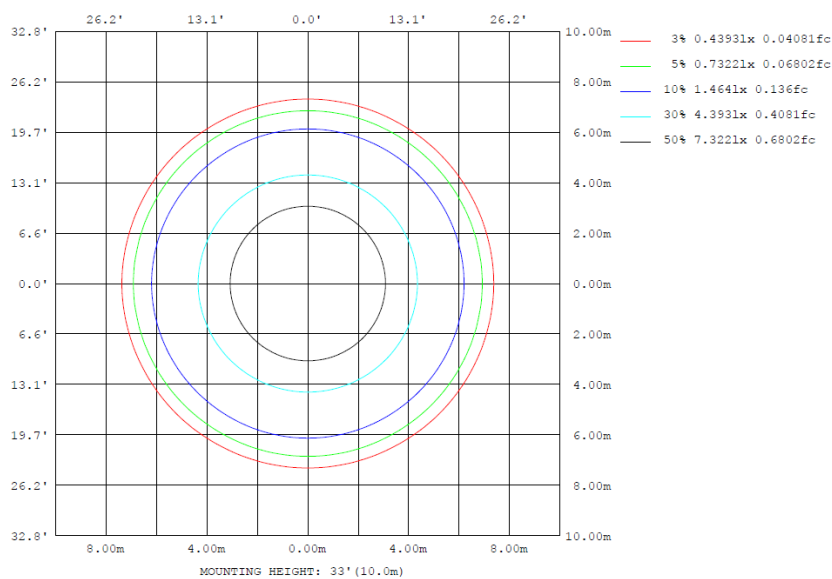
4.2 Goniophotometer Test

Lighting Distribution Curve

LUMINOUS INTENSITY DISTRIBUTION DIAGRAM



Isolux Plot



4.2 Goniophotometer Test

Zonal Lumen Summary

γ	C0	C45	C90	C135	C180	C225	C270	C315	γ	ϕ zone	ϕ total	$\%lum, lamp$
10	1195	1191	1190	1191	1195	1191	1190	1191	0- 10	126.0	126.0	17.6,17.6
20	710.4	706.4	702.5	706.4	710.4	706.4	702.5	706.4	10- 20	260.5	386.5	54,54
30	310.9	300.6	296.8	300.6	310.9	300.6	296.8	300.6	20- 30	227.5	614.0	85.8,85.8
40	29.90	29.69	29.14	29.69	29.90	29.69	29.14	29.69	30- 40	79.99	693.9	97,97
50	11.39	11.70	11.38	11.70	11.39	11.70	11.38	11.70	40- 50	12.73	706.7	98.7,98.7
60	4.199	4.185	4.015	4.185	4.199	4.185	4.015	4.185	50- 60	6.876	713.5	99.7,99.7
70	0.5668	0.5691	0.5849	0.5691	0.5668	0.5691	0.5849	0.5691	60- 70	2.054	715.6	100,100
80	0.0424	0.0378	0.0337	0.0378	0.0424	0.0378	0.0337	0.0378	70- 80	0.1248	715.7	100,100
90	0	0	0	0	0	0	0	0	80- 90	0.0165	715.7	100,100
100	0	0	0	0	0	0	0	0	90-100	0	715.7	100,100
110	0	0	0	0	0	0	0	0	100-110	0	715.7	100,100
120	0	0	0	0	0	0	0	0	110-120	0	715.7	100,100
130	0	0	0	0	0	0	0	0	120-130	0	715.7	100,100
140	0	0	0	0	0	0	0	0	130-140	0	715.7	100,100
150	0	0	0	0	0	0	0	0	140-150	0	715.7	100,100
160	0	0	0	0	0	0	0	0	150-160	0	715.7	100,100
170	0	0	0	0	0	0	0	0	160-170	0	715.7	100,100
180	0	0	0	0	0	0	0	0	170-180	0	715.7	100,100
DEG	LUMINOUS INTENSITY:cd									UNIT:lm		

Zonal (lm)		Total (lm)		Percent
0-10	126.01	0-10	126.01	17.61%
10-20	260.46	0-20	386.47	54.00%
20-30	227.49	0-30	613.96	85.78%
30-40	79.99	0-40	693.95	96.95%
40-50	12.73	0-50	706.68	98.73%
50-60	6.88	0-60	713.56	99.69%
60-70	2.05	0-70	715.61	99.98%
70-80	0.12	0-80	715.73	100.00%
80-90	0.02	0-90	715.75	100.00%
90-100	0.00	0-100	715.75	100.00%
100-110	0.00	0-110	715.75	100.00%
110-120	0.00	0-120	715.75	100.00%
120-130	0.00	0-130	715.75	100.00%
130-140	0.00	0-140	715.75	100.00%
140-150	0.00	0-150	715.75	100.00%
150-160	0.00	0-160	715.75	100.00%
160-170	0.00	0-170	715.75	100.00%
170-180	0.00	0-180	715.75	100.00%

4.2 Goniophotometer Test

Luminous Distribution Intensity Data

Table--1

UNIT: cd

C (DEG) γ (DEG)	0	15	30	45	60	75	90	105	120	135	150	165	180	195	210	225	240	255	270
0	1464	1464	1464	1464	1464	1464	1464	1464	1464	1464	1464	1464	1464	1464	1464	1464	1464	1464	1464
5	1388	1387	1388	1387	1385	1386	1386	1386	1385	1387	1388	1387	1388	1387	1388	1387	1385	1386	1386
10	1195	1194	1193	1191	1190	1189	1190	1189	1190	1191	1193	1194	1195	1194	1193	1191	1190	1189	1190
15	946	946	945	944	941	943	941	943	941	944	945	946	946	946	945	944	941	943	941
20	710	709	708	706	705	703	702	703	705	706	708	709	710	709	708	706	705	703	702
25	513	509	505	503	502	500	500	500	502	503	505	509	513	509	505	503	502	500	500
30	311	307	302	301	300	298	297	298	300	301	302	307	311	307	302	301	300	298	297
35	120	117	115	114	111	111	111	111	111	114	115	117	120	117	115	114	111	111	111
40	29.9	29.9	29.8	29.7	29.5	29.2	29.1	29.2	29.5	29.7	29.8	29.9	29.9	29.9	29.8	29.7	29.5	29.2	29.1
45	15.1	15.2	15.3	15.4	15.4	15.3	15.2	15.3	15.4	15.4	15.3	15.2	15.1	15.2	15.3	15.4	15.4	15.3	15.2
50	11.4	11.5	11.7	11.7	11.6	11.5	11.4	11.5	11.6	11.7	11.7	11.5	11.4	11.5	11.7	11.7	11.6	11.5	11.4
55	7.68	7.78	7.82	7.80	7.65	7.51	7.48	7.51	7.65	7.80	7.82	7.78	7.68	7.78	7.82	7.80	7.65	7.51	7.48
60	4.20	4.24	4.25	4.18	4.12	4.06	4.02	4.06	4.12	4.18	4.25	4.24	4.20	4.24	4.25	4.18	4.12	4.06	4.02
65	1.96	1.98	1.99	1.96	1.93	1.95	1.91	1.95	1.93	1.96	1.99	1.98	1.96	1.99	1.99	1.96	1.93	1.95	1.91
70	0.57	0.58	0.58	0.57	0.54	0.55	0.58	0.55	0.54	0.57	0.58	0.58	0.57	0.58	0.58	0.57	0.54	0.55	0.58
75	0.08	0.07	0.07	0.07	0.07	0.06	0.06	0.06	0.07	0.07	0.07	0.07	0.08	0.07	0.07	0.07	0.07	0.06	0.06
80	0.04	0.04	0.04	0.04	0.04	0.03	0.03	0.03	0.04	0.04	0.04	0.04	0.04	0.04	0.04	0.04	0.04	0.03	0.03
85	0.02	0.01	0.01	0.01	0.01	0.01	0.01	0.01	0.01	0.01	0.01	0.01	0.02	0.01	0.01	0.01	0.01	0.01	0.01
90	0.00	0.00	0.00	0.00	0.00	0.00	0.00	0.00	0.00	0.00	0.00	0.00	0.00	0.00	0.00	0.00	0.00	0.00	0.00
95	0.00	0.00	0.00	0.00	0.00	0.00	0.00	0.00	0.00	0.00	0.00	0.00	0.00	0.00	0.00	0.00	0.00	0.00	0.00
100	0.00	0.00	0.00	0.00	0.00	0.00	0.00	0.00	0.00	0.00	0.00	0.00	0.00	0.00	0.00	0.00	0.00	0.00	0.00
105	0.00	0.00	0.00	0.00	0.00	0.00	0.00	0.00	0.00	0.00	0.00	0.00	0.00	0.00	0.00	0.00	0.00	0.00	0.00
110	0.00	0.00	0.00	0.00	0.00	0.00	0.00	0.00	0.00	0.00	0.00	0.00	0.00	0.00	0.00	0.00	0.00	0.00	0.00
115	0.00	0.00	0.00	0.00	0.00	0.00	0.00	0.00	0.00	0.00	0.00	0.00	0.00	0.00	0.00	0.00	0.00	0.00	0.00
120	0.00	0.00	0.00	0.00	0.00	0.00	0.00	0.00	0.00	0.00	0.00	0.00	0.00	0.00	0.00	0.00	0.00	0.00	0.00
125	0.00	0.00	0.00	0.00	0.00	0.00	0.00	0.00	0.00	0.00	0.00	0.00	0.00	0.00	0.00	0.00	0.00	0.00	0.00
130	0.00	0.00	0.00	0.00	0.00	0.00	0.00	0.00	0.00	0.00	0.00	0.00	0.00	0.00	0.00	0.00	0.00	0.00	0.00
135	0.00	0.00	0.00	0.00	0.00	0.00	0.00	0.00	0.00	0.00	0.00	0.00	0.00	0.00	0.00	0.00	0.00	0.00	0.00
140	0.00	0.00	0.00	0.00	0.00	0.00	0.00	0.00	0.00	0.00	0.00	0.00	0.00	0.00	0.00	0.00	0.00	0.00	0.00
145	0.00	0.00	0.00	0.00	0.00	0.00	0.00	0.00	0.00	0.00	0.00	0.00	0.00	0.00	0.00	0.00	0.00	0.00	0.00
150	0.00	0.00	0.00	0.00	0.00	0.00	0.00	0.00	0.00	0.00	0.00	0.00	0.00	0.00	0.00	0.00	0.00	0.00	0.00
155	0.00	0.00	0.00	0.00	0.00	0.00	0.00	0.00	0.00	0.00	0.00	0.00	0.00	0.00	0.00	0.00	0.00	0.00	0.00
160	0.00	0.00	0.00	0.00	0.00	0.00	0.00	0.00	0.00	0.00	0.00	0.00	0.00	0.00	0.00	0.00	0.00	0.00	0.00
165	0.00	0.00	0.00	0.00	0.00	0.00	0.00	0.00	0.00	0.00	0.00	0.00	0.00	0.00	0.00	0.00	0.00	0.00	0.00
170	0.00	0.00	0.00	0.00	0.00	0.00	0.00	0.00	0.00	0.00	0.00	0.00	0.00	0.00	0.00	0.00	0.00	0.00	0.00
175	0.00	0.00	0.00	0.00	0.00	0.00	0.00	0.00	0.00	0.00	0.00	0.00	0.00	0.00	0.00	0.00	0.00	0.00	0.00
180	0.00	0.00	0.00	0.00	0.00	0.00	0.00	0.00	0.00	0.00	0.00	0.00	0.00	0.00	0.00	0.00	0.00	0.00	0.00

Table--2

UNIT: cd

C (DEG) γ (DEG)	285	300	315	330	345														
0	1464	1464	1464	1464	1464														
5	1386	1385	1387	1388	1387														
10	1189	1190	1191	1193	1194														
15	943	941	944	945	946														
20	703	705	706	708	709														
25	500	502	503	505	509														
30	298	300	301	302	307														
35	111	111	114	115	117														
40	29.2	29.5	29.7	29.8	29.9														
45	15.3	15.4	15.4	15.3	15.2														
50	11.5	11.6	11.7	11.7	11.5														
55	7.51	7.65	7.80	7.82	7.78														
60	4.06	4.12	4.18	4.25	4.24														
65	1.95	1.93	1.96	1.99	1.98														
70	0.55	0.54	0.57	0.58	0.58														
75	0.06	0.07	0.07	0.07	0.07														
80	0.03	0.04	0.04	0.04	0.04														
85	0.01	0.01	0.01	0.01	0.01														
90	0.00	0.00	0.00	0.00	0.00														
95	0.00	0.00	0.00	0.00	0.00														
100	0.00	0.00	0.00	0.00	0.00														
105	0.00	0.00	0.00	0.00	0.00														
110	0.00	0.00	0.00	0.00	0.00														
115	0.00	0.00	0.00	0.00	0.00														
120	0.00	0.00	0.00	0.00	0.00														
125	0.00	0.00	0.00	0.00	0.00														
130	0.00	0.00	0.00	0.00	0.00														
135	0.00	0.00	0.00	0.00	0.00														
140	0.00	0.00	0.00	0.00	0.00														
145	0.00	0.00	0.00	0.00	0.00														
150	0.00	0.00	0.00	0.00	0.00														
155	0.00	0.00	0.00	0.00	0.00														
160	0.00	0.00	0.00	0.00	0.00														
165	0.00	0.00	0.00	0.00	0.00														
170	0.00	0.00	0.00	0.00	0.00														
175	0.00	0.00	0.00	0.00	0.00														
180	0.00	0.00	0.00	0.00	0.00														

4.0 LM-79 Measurement and Test Results

4.3 THD and PF Test

Model No.	PIVOTMB @8W3500K	Sample ID	250903027-S1
Temperature (°C)	25.4	Humidity (%RH)	41.0

Test Method
<p>The samples were tested according to the and ANSI C82.77: 2002 and ANSI C82.77-10:2020</p> <p>The total harmonic distortion shall be measured to the 40th order.</p> <p>The ambient temperature shall be maintained at $25 \pm 1^\circ\text{C}$. The sample measurements were made using a digital power meter and power supply. The sample was operated at rated voltage and was stabilized before measurement. The total harmonic distortion was calculated.</p>

Test Results

Voltage (Vac)	Frequency (Hz)	Current (A)	Power (W)	Power Factor	iTHD(%)
120.0	60	0.067	7.8	0.966	12.86

5.0 Equipment List:

Equipment ID	Equipment Name	Last Cal.	Due Cal.
NTC-F01-001	Goniophotometer System	2025-11-06	2026-11-05
NTC-F01-006	2.0 meter Integrating Sphere	2025-11-06	2026-11-05
NTC-F01-012	Standard Lamp	2025-10-27	2026-10-26
NTC-F01-013	Standard Lamp	2025-10-27	2026-10-26
NTC-F01-031	Digital Power Meter	2025-08-04	2026-08-03
NTC-F01-019	Temperature & Humidity Meter	2025-10-23	2026-10-22

*******End of Report*******