

Photometric Test Report

Relevant Standards

- ☒ ANSI/IES LM-79-19
- ☒ ANSI C82.77-2020

Prepared For

RAB Lighting Inc.

Address: 408 W 14th St New York, NY 10014

Prepared By

Dongguan New Testing Centre Co., Ltd.

Address: 3F No. 1 the 1st North Industry Road, Songshan Lake Science & Technology Park, Dongguan, Guangdong, China

Prepare by:

Alan Wang

Engineer: Alan Wang

Date: 2025-12-10

Review by:

Vincent Yuan

Technical Lead: Vincent Yuan

Issue Date: 2025-12-10

Revised Date: N/A

1.0 Test Summary

DLC Technical Requirements V6.0

Track or Mono-Point Luminaires				
Requirement Category	Test Method	Requirements		Test Value
Luminaire Output (lm) (Goniophotometer – Section 4.2)	ANSI/IES LM-79-19	≥250lm		878
Minimum Luminaire Efficacy (lm/W) (Goniophotometer – Section 4.2)	ANSI/IES LM-79-19	Standard	Premium	91.4
		95	110	
Power (Input Wattage) (W) (Goniophotometer – Section 4.2)	ANSI/IES LM-79-19	Worst Case		9.6
Total Harmonic Distortion (A%) (THD & PF – Section 4.3)	ANSI C82.77:2002 ANSI C82-77-10:2020	20.00%	120V	12.60
Power Factor (THD & PF – Section 4.3)	ANSI C82.77:2002 ANSI C82-77-10:2020	0.9	120V	0.975
Allowable CCTs* (K) (Integrating Sphere – Section 4.1)	ANSI/IES LM-79-19	7 steps	3985±275	4014
		4 steps	3985±154	
Chromaticity (D _{uv}) (Integrating Sphere – Section 4.1)	ANSI/IES LM-79-19	7 steps	0.0010±0.0060	-0.0002
		4 steps	0.0010±0.0033	
Minimum CRI (Integrating Sphere – Section 4.1)	ANSI/IES LM-79 19 CIE13.3-1995	≥80		95.3
Minimum R9 (Integrating Sphere – Section 4.1)	ANSI/IES LM-79-19 CIE13.3-1995	≥0		76
Minimum Rf (Integrating Sphere – Section 4.1)	ANSI/IES TM-30-24	≥70		91
Minimum Rg (Integrating Sphere – Section 4.1)	ANSI/IES TM-30-24	≥89		97
IES Rcs,h1 (Integrating Sphere – Section 4.1)	ANSI/IES TM-30-24	-12%≤IES Rcs,h1≤+23%		-3%
Zonal Lumen Requirement (0°-90°) (Goniophotometer – Section 4.2)	ANSI/IES LM-79-19	≥ 85%		100.0%
Input Voltage (V)				
(Goniophotometer – Section 4.2)	ANSI/IES LM-79-19	Worst Cast		120.0
(Goniophotometer – Section 4.2)		Non-Worst Case		N/A
Input Current (A)				
(Goniophotometer – Section 4.2)	ANSI/IES LM-79-19	Worst Case		0.082
(Goniophotometer – Section 4.2)		Non-Worst Case		N/A
Power (Input Wattage – W)				
(Goniophotometer – Section 4.2)	ANSI/IES LM-79-19	Worst Case		9.6
(Goniophotometer – Section 4.2)		Non-Worst Case		N/A

2.0 Test List

Test Item	Test	Test Date	Model Number	Build Level	Sample No.
1	Integrating Sphere Test	2025-12-08	PIVOTMB @10W4000K	-	250903027-S1
2	Goniophotometer Test	2025-12-08	PIVOTMB @10W4000K	-	250903027-S1
3	THD and PF Test	2025-12-08	PIVOTMB @10W4000K	-	250903027-S1

Remark (If any):

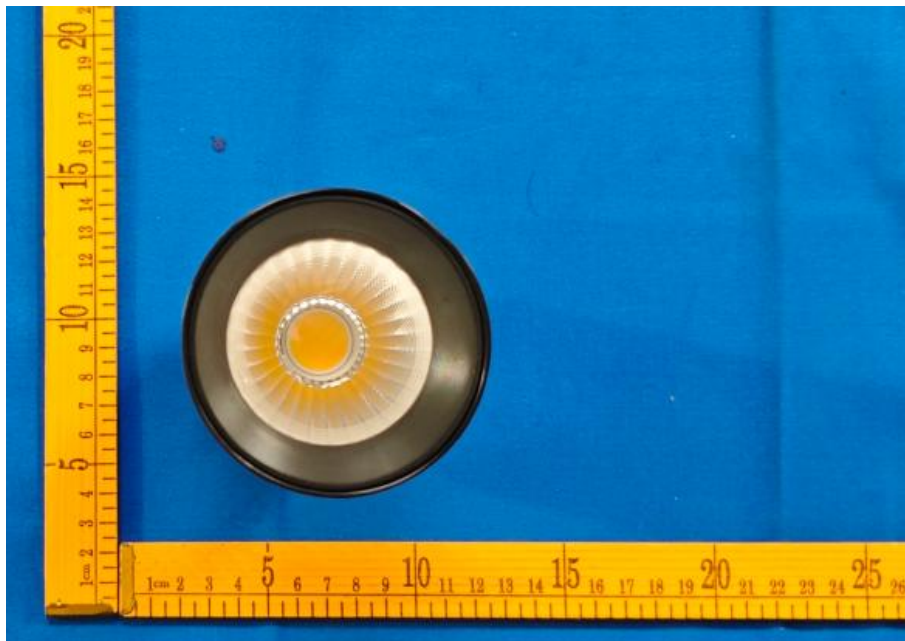
1. The results contained in this report pertain only to the tested samples.
2. This report shall not be reproduced, no limited part or full, without approval of Dongguan New Testing Centre Co., Ltd.
3. This report must not be used by the client to claim product certification, approval, or endorsement by NVLAP, NIST or any agency of the U.S. Government.

3.0 Product Description

Luminaire Description: Model No. PIVOTMB @10W4000K, color tunable from 2700K, 3000K, 3500K, 4000K and 5000K.

Electrical Specification: 120Vac, 60Hz

Photos of Luminaire Characteristics



4.0 LM-79 Measurement and Test Results

4.1 Integrating Sphere Test

Model No.	PIVOTMB @10W4000K	Sample ID	250903027-S1
Operate time (Min.)	10	Stabilization time (Min.)	60
Temperature (°C)	25.4	Humidity (%RH)	41.0

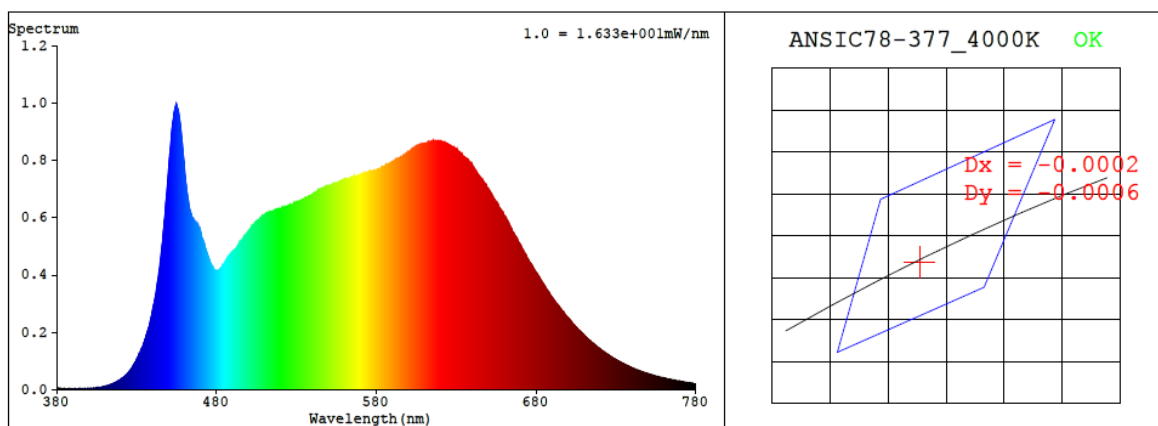
Test Method
<p>The Samples were tested according to the ANSI/IES LM-79:2019.</p> <p>Photometric parameters were measured using an integrating sphere, a spectroradiometer and software. The ambient temperature condition inside the sphere was maintained at 25±1°C.</p> <p>The sample measurements were made using a spectroradiometer connected by a fiber optic cable and detector through the detector port of the integrating sphere.</p> <p>The voltage of an AC power supply (RMS voltage) or DC power supply (instantaneous voltage) applied to the device under test shall be regulated to within ±0.2 percent under load.</p> <p>The sample was measured using 4π geometry and operated at rated voltage and was stabilized before measurement. Chromaticity coordinates, correlated color temperature and color rendering index were calculated from the spectral radiant flux measurements taken at 1 nm intervals over the range of 380 to 780nm.</p>

Test Result

Voltage (Vac)	Frequency (Hz)	Current (A)	Power (W)	Power Factor
120.0	60	0.082	9.6	0.975

CCT (K)	CRI	R9	Duv	SDCM	Rf	Rg	IES Rcs,h1
4014	95.3	76	-0.0002	1.5	91	97	-3%

4.1 Integrating Sphere Test



Colorimetric Parameters

Chromaticity Coordinate: $x = 0.3796$ $y = 0.3758$ / $u' = 0.2249$ $v' = 0.5010$ ($duv = -2.06e-04$)

CCT= 4014K Prcp WL: $L_d = 579.1\text{nm}$ Purity=26.7%

Peak WL: $L_p = 455\text{nm}$ FWHM: $= 27.2\text{nm}$ Ratio: R=20.2% G=75.1% B=4.8%

Render Index: $R_a = 95.3$ AvgR = 93.4 TM30: $R_f = 92$ $R_g = 98$

EEL: 0.14318 A+

R1 =97 R2 =100 R3 =99 R4 =94 R5 =95 R6 =96 R7 =93

R8 =89 R9 =76 R10=98 R11=96 R12=76 R13=98 R14=100 R15=94

4.1 Integrating Sphere Test

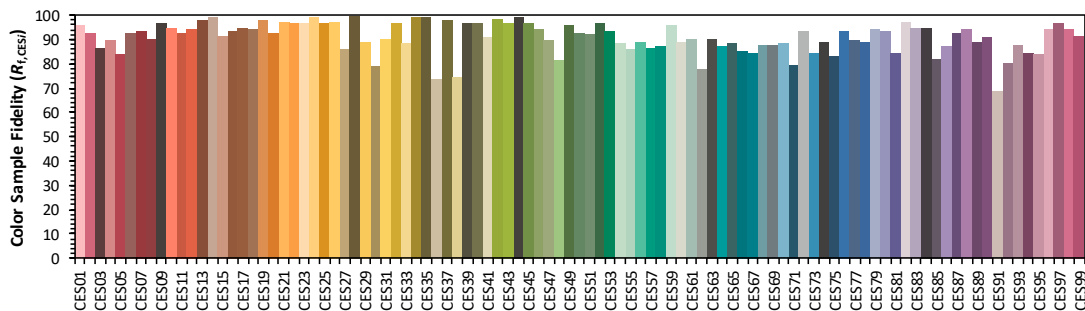
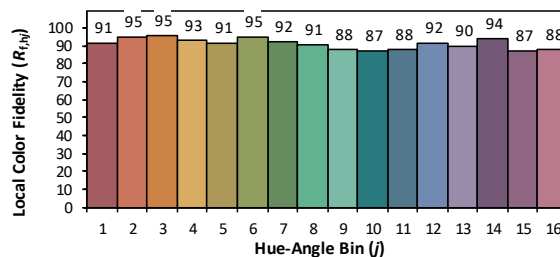
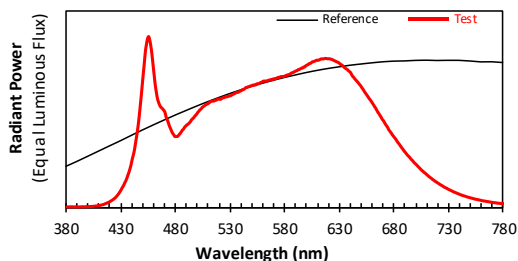
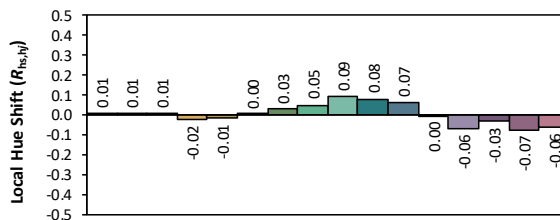
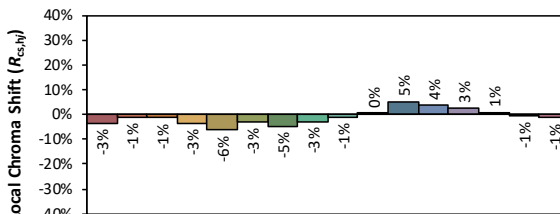
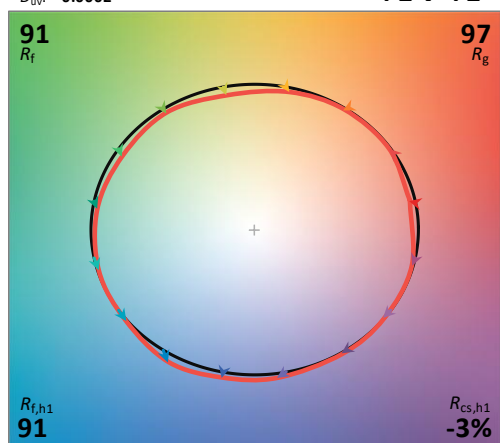
ANSI/IES TM-30-24 Color Rendition Report

Source: BXRV-TR-2750G-20A0-A-2x
Date: 2025/12/10
Notes: N/A

Make: RAB Lighting Inc.
Model: PIVOTMB @10W4000K
Other: N/A

CCT: 4016 K
 D_{uv} : -0.0002

P2 V- F2



TM-30 Advanced Calculator Version 2.04

Created

2025/12/10

4.1 Integrating Sphere Test

Spectral Distribution over Visible Wavelength											
WL (nm)	Radiant (W/nm)	WL (nm)	Radiant (W/nm)	WL (nm)	Radiant (W/nm)	WL (nm)	Radiant (W/nm)	WL (nm)	Radiant (W/nm)	WL (nm)	Radiant (W/nm)
380	3.00E-03	447	5.72E-01	514	6.20E-01	581	7.69E-01	648	7.18E-01	715	1.64E-01
381	3.20E-03	448	6.36E-01	515	6.20E-01	582	7.71E-01	649	7.11E-01	716	1.60E-01
382	2.70E-03	449	7.05E-01	516	6.24E-01	583	7.72E-01	650	7.01E-01	717	1.55E-01
383	3.70E-03	450	7.74E-01	517	6.25E-01	584	7.75E-01	651	6.92E-01	718	1.50E-01
384	3.50E-03	451	8.39E-01	518	6.30E-01	585	7.79E-01	652	6.83E-01	719	1.47E-01
385	4.10E-03	452	9.08E-01	519	6.32E-01	586	7.84E-01	653	6.72E-01	720	1.42E-01
386	3.00E-03	453	9.50E-01	520	6.30E-01	587	7.85E-01	654	6.63E-01	721	1.38E-01
387	2.90E-03	454	9.83E-01	521	6.30E-01	588	7.88E-01	655	6.54E-01	722	1.34E-01
388	3.70E-03	455	9.95E-01	522	6.35E-01	589	7.91E-01	656	6.45E-01	723	1.30E-01
389	3.10E-03	456	9.74E-01	523	6.38E-01	590	7.95E-01	657	6.35E-01	724	1.26E-01
390	3.00E-03	457	9.40E-01	524	6.40E-01	591	7.97E-01	658	6.26E-01	725	1.22E-01
391	2.80E-03	458	8.92E-01	525	6.42E-01	592	8.02E-01	659	6.18E-01	726	1.18E-01
392	3.40E-03	459	8.32E-01	526	6.46E-01	593	8.04E-01	660	6.08E-01	727	1.15E-01
393	3.50E-03	460	7.73E-01	527	6.45E-01	594	8.07E-01	661	5.98E-01	728	1.12E-01
394	4.10E-03	461	7.16E-01	528	6.47E-01	595	8.11E-01	662	5.87E-01	729	1.08E-01
395	3.90E-03	462	6.73E-01	529	6.50E-01	596	8.12E-01	663	5.79E-01	730	1.05E-01
396	3.80E-03	463	6.36E-01	530	6.50E-01	597	8.18E-01	664	5.67E-01	731	1.02E-01
397	3.80E-03	464	6.14E-01	531	6.54E-01	598	8.18E-01	665	5.55E-01	732	9.88E-02
398	4.40E-03	465	5.97E-01	532	6.58E-01	599	8.25E-01	666	5.46E-01	733	9.56E-02
399	4.60E-03	466	5.85E-01	533	6.61E-01	600	8.29E-01	667	5.36E-01	734	9.23E-02
400	4.80E-03	467	5.80E-01	534	6.64E-01	601	8.31E-01	668	5.26E-01	735	8.95E-02
401	5.00E-03	468	5.73E-01	535	6.67E-01	602	8.37E-01	669	5.14E-01	736	8.67E-02
402	5.70E-03	469	5.64E-01	536	6.70E-01	603	8.39E-01	670	5.06E-01	737	8.43E-02
403	5.70E-03	470	5.53E-01	537	6.71E-01	604	8.42E-01	671	4.96E-01	738	8.15E-02
404	6.50E-03	471	5.26E-01	538	6.74E-01	605	8.48E-01	672	4.85E-01	739	7.89E-02
405	6.90E-03	472	5.12E-01	539	6.78E-01	606	8.49E-01	673	4.75E-01	740	7.64E-02
406	8.00E-03	473	4.94E-01	540	6.81E-01	607	8.52E-01	674	4.66E-01	741	7.38E-02
407	8.70E-03	474	4.75E-01	541	6.86E-01	608	8.54E-01	675	4.53E-01	742	7.14E-02
408	9.10E-03	475	4.60E-01	542	6.87E-01	609	8.58E-01	676	4.44E-01	743	6.92E-02
409	1.02E-02	476	4.45E-01	543	6.92E-01	610	8.57E-01	677	4.36E-01	744	6.73E-02
410	1.16E-02	477	4.32E-01	544	6.98E-01	611	8.59E-01	678	4.26E-01	745	6.53E-02
411	1.31E-02	478	4.24E-01	545	6.99E-01	612	8.62E-01	679	4.17E-01	746	6.29E-02
412	1.44E-02	479	4.13E-01	546	7.02E-01	613	8.65E-01	680	4.09E-01	747	6.11E-02
413	1.61E-02	480	4.13E-01	547	7.04E-01	614	8.65E-01	681	4.01E-01	748	5.90E-02
414	1.83E-02	481	4.13E-01	548	7.07E-01	615	8.65E-01	682	3.92E-01	749	5.77E-02
415	2.10E-02	482	4.16E-01	549	7.08E-01	616	8.67E-01	683	3.82E-01	750	5.56E-02
416	2.33E-02	483	4.25E-01	550	7.12E-01	617	8.68E-01	684	3.74E-01	751	5.40E-02
417	2.63E-02	484	4.32E-01	551	7.12E-01	618	8.67E-01	685	3.65E-01	752	5.25E-02
418	2.91E-02	485	4.41E-01	552	7.14E-01	619	8.66E-01	686	3.56E-01	753	5.04E-02
419	3.19E-02	486	4.51E-01	553	7.13E-01	620	8.66E-01	687	3.47E-01	754	4.90E-02
420	3.61E-02	487	4.57E-01	554	7.19E-01	621	8.65E-01	688	3.39E-01	755	4.72E-02
421	4.00E-02	488	4.68E-01	555	7.20E-01	622	8.63E-01	689	3.30E-01	756	4.64E-02
422	4.40E-02	489	4.74E-01	556	7.21E-01	623	8.62E-01	690	3.22E-01	757	4.48E-02
423	4.89E-02	490	4.81E-01	557	7.25E-01	624	8.58E-01	691	3.14E-01	758	4.33E-02
424	5.40E-02	491	4.85E-01	558	7.28E-01	625	8.55E-01	692	3.06E-01	759	4.20E-02
425	6.03E-02	492	4.91E-01	559	7.31E-01	626	8.52E-01	693	2.99E-01	760	4.05E-02
426	6.79E-02	493	4.97E-01	560	7.35E-01	627	8.49E-01	694	2.93E-01	761	3.90E-02
427	7.55E-02	494	5.08E-01	561	7.36E-01	628	8.47E-01	695	2.85E-01	762	3.77E-02
428	8.46E-02	495	5.15E-01	562	7.36E-01	629	8.43E-01	696	2.77E-01	763	3.72E-02
429	9.45E-02	496	5.21E-01	563	7.34E-01	630	8.38E-01	697	2.72E-01	764	3.59E-02
430	1.06E-01	497	5.29E-01	564	7.39E-01	631	8.32E-01	698	2.63E-01	765	3.45E-02
431	1.18E-01	498	5.37E-01	565	7.41E-01	632	8.30E-01	699	2.57E-01	766	3.38E-02
432	1.27E-01	499	5.44E-01	566	7.42E-01	633	8.24E-01	700	2.51E-01	767	3.27E-02
433	1.42E-01	500	5.53E-01	567	7.45E-01	634	8.18E-01	701	2.44E-01	768	3.14E-02
434	1.54E-01	501	5.60E-01	568	7.44E-01	635	8.12E-01	702	2.37E-01	769	3.04E-02
435	1.70E-01	502	5.68E-01	569	7.48E-01	636	8.07E-01	703	2.31E-01	770	2.95E-02
436	1.88E-01	503	5.74E-01	570	7.49E-01	637	8.04E-01	704	2.24E-01	771	2.84E-02
437	2.06E-01	504	5.82E-01	571	7.51E-01	638	7.96E-01	705	2.18E-01	772	2.75E-02
438	2.28E-01	505	5.87E-01	572	7.51E-01	639	7.91E-01	706	2.12E-01	773	2.69E-02
439	2.52E-01	506	5.91E-01	573	7.56E-01	640	7.86E-01	707	2.06E-01	774	2.57E-02
440	2.82E-01	507	5.96E-01	574	7.58E-01	641	7.73E-01	708	2.02E-01	775	2.49E-02
441	3.07E-01	508	6.00E-01	575	7.57E-01	642	7.63E-01	709	1.96E-01	776	2.43E-02
442	3.36E-01	509	6.03E-01	576	7.62E-01	643	7.57E-01	710	1.91E-01	777	2.33E-02
443	3.76E-01	510	6.07E-01	577	7.61E-01	644	7.48E-01	711	1.85E-01	778	2.31E-02
444	4.15E-01	511	6.12E-01	578	7.63E-01	645	7.41E-01	712	1.79E-01	779	2.31E-02
445	4.59E-01	512	6.17E-01	579	7.63E-01	646	7.34E-01	713	1.74E-01	780	2.31E-02
446	5.11E-01	513	6.19E-01	580	7.66E-01	647	7.27E-01	714	1.70E-01	N/A	N/A

4.0 LM-79 Measurement and Test Results

4.2 Goniophotometer Test

Model No.	PIVOTMB @10W4000K	Sample ID	250903027-S1
Operate time (Min.)	30	Stabilization time (Min.)	60
Temperature (°C)	25.0	Humidity (%RH)	42.1

Test Method
<p>The Samples were tested according to the ANSI/IES LM-79:2019.</p> <p>Photometric parameters were measured using a type C goniophotometer and software.</p> <p>The ambient temperature shall be maintained at $25 \pm 1^\circ\text{C}$, measured at a point not more than 1 m from the sample and at the same height as the sample.</p> <p>The voltage of an AC power supply (RMS voltage) or DC power supply (instantaneous voltage) applied to the device under test shall be regulated to within ± 0.2 percent under load.</p> <p>The samples were operated at rated voltage and was stabilized before measurement. Luminous flux, luminaire efficacy, zonal lumen were calculated from the software taken at 1.0° vertical intervals and 15° horizontal intervals.</p>

Test Conditions

Condition	Voltage (Vac)	Frequency (Hz)	Current (A)	Power (W)	Power Factor
WORST CASE	120.0	60	0.082	9.6	0.975
NON-WORST CASE	N/A	N/A	N/A	N/A	N/A

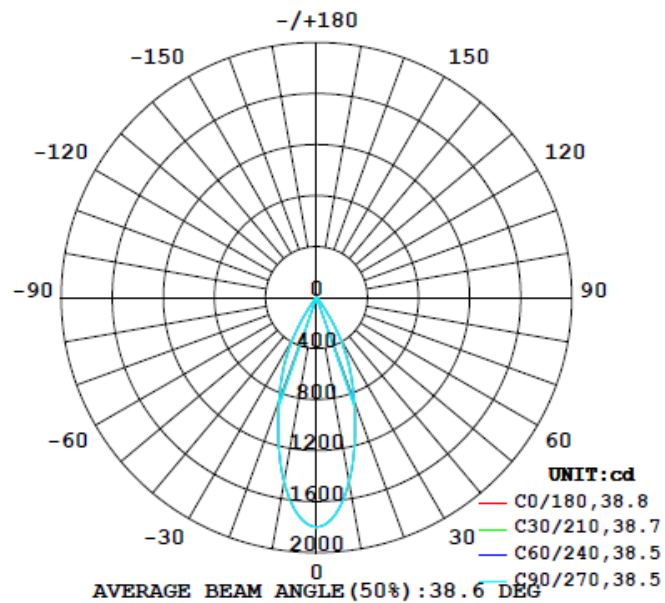
Test Result

Flux (lm)	Field Angle (10%)		Beam Angle (50%)		Luminous Efficacy (lm/W)	Zonal Lumen Requirement
	C0-180	C90-270	C0-180	C90-270		(0°-90°)
878	69.0	68.4	38.8	38.5	91.4	100.0%

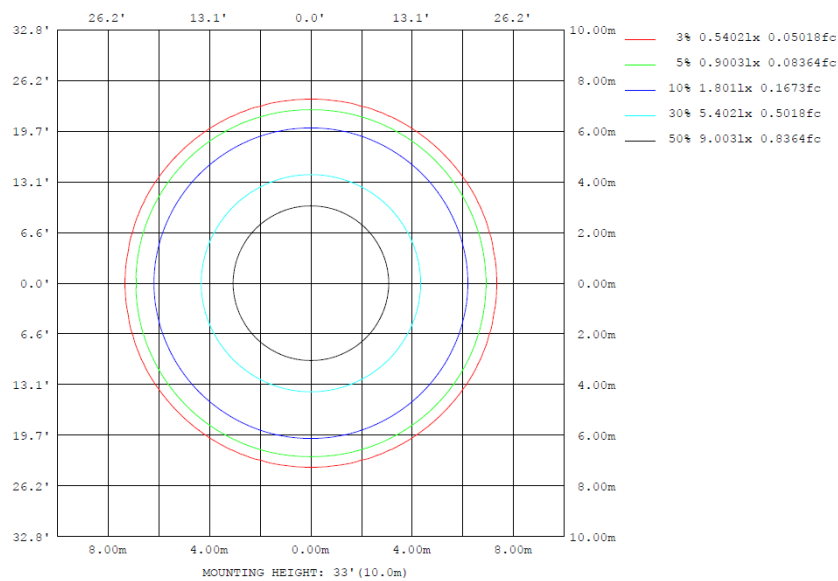
4.2 Goniophotometer Test

Lighting Distribution Curve

LUMINOUS INTENSITY DISTRIBUTION DIAGRAM



Isolux Plot



4.2 Goniophotometer Test

Zonal Lumen Summary

γ	C0	C45	C90	C135	C180	C225	C270	C315	γ	Φ zone	Φ total	Φ lum, lamp
10	1467	1466	1461	1466	1467	1466	1461	1466	0- 10	155.0	155.0	17.7,17.7
20	869.2	863.4	858.7	863.4	869.2	863.4	858.7	863.4	10- 20	319.3	474.3	54,54
30	381.9	367.4	364.8	367.4	381.9	367.4	364.8	367.4	20- 30	277.7	752.0	85.7,85.7
40	36.73	36.81	35.91	36.81	36.73	36.81	35.91	36.81	30- 40	99.06	851.1	96.9,96.9
50	13.93	14.33	13.94	14.33	13.93	14.33	13.94	14.33	40- 50	15.62	866.7	98.7,98.7
60	5.170	5.158	4.938	5.158	5.170	5.158	4.938	5.158	50- 60	8.443	875.1	99.7,99.7
70	0.7106	0.7173	0.7333	0.7173	0.7106	0.7173	0.7333	0.7173	60- 70	2.532	877.7	100,100
80	0.0528	0.0475	0.0419	0.0475	0.0528	0.0475	0.0419	0.0475	70- 80	0.1571	877.8	100,100
90	0	0	0	0	0	0	0	0	80- 90	0.0212	877.8	100,100
100	0	0	0	0	0	0	0	0	90-100	0	877.8	100,100
110	0	0	0	0	0	0	0	0	100-110	0	877.8	100,100
120	0	0	0	0	0	0	0	0	110-120	0	877.8	100,100
130	0	0	0	0	0	0	0	0	120-130	0	877.8	100,100
140	0	0	0	0	0	0	0	0	130-140	0	877.8	100,100
150	0	0	0	0	0	0	0	0	140-150	0	877.8	100,100
160	0	0	0	0	0	0	0	0	150-160	0	877.8	100,100
170	0	0	0	0	0	0	0	0	160-170	0	877.8	100,100
180	0	0	0	0	0	0	0	0	170-180	0	877.8	100,100
DEG	LUMINOUS INTENSITY:cd									UNIT:lm		

Zonal (lm)		Total (lm)		Percent
0-10	155.02	0-10	155.02	17.66%
10-20	319.30	0-20	474.32	54.03%
20-30	277.67	0-30	751.99	85.67%
30-40	99.06	0-40	851.05	96.95%
40-50	15.62	0-50	866.67	98.73%
50-60	8.44	0-60	875.11	99.69%
60-70	2.53	0-70	877.64	99.98%
70-80	0.16	0-80	877.80	100.00%
80-90	0.02	0-90	877.82	100.00%
90-100	0.00	0-100	877.82	100.00%
100-110	0.00	0-110	877.82	100.00%
110-120	0.00	0-120	877.82	100.00%
120-130	0.00	0-130	877.82	100.00%
130-140	0.00	0-140	877.82	100.00%
140-150	0.00	0-150	877.82	100.00%
150-160	0.00	0-160	877.82	100.00%
160-170	0.00	0-170	877.82	100.00%
170-180	0.00	0-180	877.82	100.00%

4.2 Goniophotometer Test

Luminous Distribution Intensity Data

Table--1

UNIT: cd

C (DEG) y (DEG)	0	15	30	45	60	75	90	105	120	135	150	165	180	195	210	225	240	255	270
0	1801	1800	1800	1800	1800	1800	1800	1800	1800	1800	1800	1800	1801	1800	1800	1800	1800	1800	1800
5	1707	1706	1707	1706	1704	1705	1705	1705	1704	1706	1707	1706	1707	1706	1707	1706	1704	1705	1705
10	1467	1467	1467	1466	1465	1462	1461	1462	1465	1466	1467	1467	1467	1467	1467	1466	1465	1462	1461
15	1160	1160	1160	1158	1156	1156	1153	1156	1156	1158	1160	1160	1160	1160	1160	1158	1156	1156	1153
20	869	867	865	863	860	860	859	860	860	863	865	867	869	867	865	863	860	860	859
25	626	622	616	613	611	610	610	610	611	613	616	622	626	622	616	613	611	610	610
30	382	376	370	367	367	365	365	365	367	367	370	376	382	376	370	367	367	365	365
35	145	145	145	144	141	138	136	138	141	144	145	145	145	145	145	144	141	138	136
40	36.7	36.9	36.8	36.8	36.5	36.0	35.9	36.0	36.5	36.8	36.8	36.9	36.7	36.9	36.8	36.8	36.5	36.0	35.9
45	18.4	18.6	18.8	18.8	18.9	18.7	18.5	18.7	18.9	18.8	18.8	18.6	18.4	18.6	18.8	18.8	18.9	18.7	18.5
50	13.9	14.1	14.3	14.3	14.2	14.0	13.9	14.0	14.2	14.3	14.3	14.1	13.9	14.1	14.3	14.3	14.2	14.0	13.9
55	9.42	9.55	9.60	9.59	9.40	9.24	9.20	9.24	9.40	9.59	9.60	9.55	9.42	9.55	9.60	9.59	9.40	9.24	9.20
60	5.17	5.22	5.22	5.16	5.07	4.99	4.94	4.99	5.07	5.16	5.22	5.22	5.17	5.22	5.22	5.16	5.07	4.99	4.94
65	2.42	2.44	2.45	2.42	2.39	2.40	2.35	2.40	2.39	2.42	2.45	2.44	2.42	2.44	2.45	2.42	2.39	2.40	2.35
70	0.71	0.72	0.72	0.72	0.69	0.69	0.73	0.69	0.69	0.72	0.72	0.72	0.71	0.72	0.72	0.69	0.69	0.73	0.73
75	0.10	0.09	0.09	0.09	0.08	0.08	0.07	0.08	0.08	0.09	0.09	0.09	0.10	0.09	0.09	0.09	0.08	0.08	0.07
80	0.05	0.05	0.05	0.05	0.04	0.04	0.04	0.04	0.04	0.05	0.05	0.05	0.05	0.05	0.05	0.05	0.04	0.04	0.04
85	0.02	0.02	0.02	0.02	0.02	0.02	0.02	0.02	0.02	0.02	0.02	0.02	0.02	0.02	0.02	0.02	0.02	0.02	0.02
90	0.00	0.00	0.00	0.00	0.00	0.00	0.00	0.00	0.00	0.00	0.00	0.00	0.00	0.00	0.00	0.00	0.00	0.00	0.00
95	0.00	0.00	0.00	0.00	0.00	0.00	0.00	0.00	0.00	0.00	0.00	0.00	0.00	0.00	0.00	0.00	0.00	0.00	0.00
100	0.00	0.00	0.00	0.00	0.00	0.00	0.00	0.00	0.00	0.00	0.00	0.00	0.00	0.00	0.00	0.00	0.00	0.00	0.00
105	0.00	0.00	0.00	0.00	0.00	0.00	0.00	0.00	0.00	0.00	0.00	0.00	0.00	0.00	0.00	0.00	0.00	0.00	0.00
110	0.00	0.00	0.00	0.00	0.00	0.00	0.00	0.00	0.00	0.00	0.00	0.00	0.00	0.00	0.00	0.00	0.00	0.00	0.00
115	0.00	0.00	0.00	0.00	0.00	0.00	0.00	0.00	0.00	0.00	0.00	0.00	0.00	0.00	0.00	0.00	0.00	0.00	0.00
120	0.00	0.00	0.00	0.00	0.00	0.00	0.00	0.00	0.00	0.00	0.00	0.00	0.00	0.00	0.00	0.00	0.00	0.00	0.00
125	0.00	0.00	0.00	0.00	0.00	0.00	0.00	0.00	0.00	0.00	0.00	0.00	0.00	0.00	0.00	0.00	0.00	0.00	0.00
130	0.00	0.00	0.00	0.00	0.00	0.00	0.00	0.00	0.00	0.00	0.00	0.00	0.00	0.00	0.00	0.00	0.00	0.00	0.00
135	0.00	0.00	0.00	0.00	0.00	0.00	0.00	0.00	0.00	0.00	0.00	0.00	0.00	0.00	0.00	0.00	0.00	0.00	0.00
140	0.00	0.00	0.00	0.00	0.00	0.00	0.00	0.00	0.00	0.00	0.00	0.00	0.00	0.00	0.00	0.00	0.00	0.00	0.00
145	0.00	0.00	0.00	0.00	0.00	0.00	0.00	0.00	0.00	0.00	0.00	0.00	0.00	0.00	0.00	0.00	0.00	0.00	0.00
150	0.00	0.00	0.00	0.00	0.00	0.00	0.00	0.00	0.00	0.00	0.00	0.00	0.00	0.00	0.00	0.00	0.00	0.00	0.00
155	0.00	0.00	0.00	0.00	0.00	0.00	0.00	0.00	0.00	0.00	0.00	0.00	0.00	0.00	0.00	0.00	0.00	0.00	0.00
160	0.00	0.00	0.00	0.00	0.00	0.00	0.00	0.00	0.00	0.00	0.00	0.00	0.00	0.00	0.00	0.00	0.00	0.00	0.00
165	0.00	0.00	0.00	0.00	0.00	0.00	0.00	0.00	0.00	0.00	0.00	0.00	0.00	0.00	0.00	0.00	0.00	0.00	0.00
170	0.00	0.00	0.00	0.00	0.00	0.00	0.00	0.00	0.00	0.00	0.00	0.00	0.00	0.00	0.00	0.00	0.00	0.00	0.00
175	0.00	0.00	0.00	0.00	0.00	0.00	0.00	0.00	0.00	0.00	0.00	0.00	0.00	0.00	0.00	0.00	0.00	0.00	0.00
180	0.00	0.00	0.00	0.00	0.00	0.00	0.00	0.00	0.00	0.00	0.00	0.00	0.00	0.00	0.00	0.00	0.00	0.00	0.00

Table--2

UNIT: cd

C (DEG) y (DEG)	285	300	315	330	345														
0	1800	1800	1800	1800	1800														
5	1705	1704	1706	1707	1706														
10	1462	1465	1466	1467	1467														
15	1156	1156	1158	1160	1160														
20	860	860	863	865	867														
25	610	611	613	616	622														
30	365	367	367	370	376														
35	138	141	144	145	145														
40	36.0	36.5	36.8	36.8	36.9														
45	18.7	18.9	18.8	18.8	18.6														
50	14.0	14.2	14.3	14.3	14.1														
55	9.24	9.40	9.59	9.60	9.55														
60	4.99	5.07	5.16	5.22	5.22														
65	2.40	2.39	2.42	2.45	2.44														
70	0.69	0.69	0.72	0.72	0.72														
75	0.08	0.08	0.09	0.09	0.09														
80	0.04	0.04	0.05	0.05	0.05														
85	0.02	0.02	0.02	0.02	0.02														
90	0.00	0.00	0.00	0.00	0.00														
95	0.00	0.00	0.00	0.00	0.00														
100	0.00	0.00	0.00	0.00	0.00														
105	0.00	0.00	0.00	0.00	0.00														
110	0.00	0.00	0.00	0.00	0.00														
115	0.00	0.00	0.00	0.00	0.00														
120	0.00	0.00	0.00	0.00	0.00														
125	0.00	0.00	0.00	0.00	0.00														
130	0.00	0.00	0.00	0.00	0.00														
135	0.00	0.00	0.00	0.00	0.00														
140	0.00	0.00	0.00	0.00	0.00														
145	0.00	0.00	0.00	0.00	0.00														
150	0.00	0.00	0.00	0.00	0.00														
155	0.00	0.00	0.00	0.00	0.00														
160	0.00	0.00	0.00	0.00	0.00														
165	0.00	0.00	0.00	0.00	0.00														
170	0.00	0.00	0.00	0.00	0.00														
175	0.00	0.00	0.00	0.00	0.00														
180	0.00	0.00	0.00	0.00	0.00														

4.0 LM-79 Measurement and Test Results

4.3 THD and PF Test

Model No.	PIVOTMB @10W4000K	Sample ID	250903027-S1
Temperature (°C)	25.4	Humidity (%RH)	41.0

Test Method
<p>The samples were tested according to the and ANSI C82.77: 2002 and ANSI C82.77-10:2020</p> <p>The total harmonic distortion shall be measured to the 40th order.</p> <p>The ambient temperature shall be maintained at $25 \pm 1^\circ\text{C}$. The sample measurements were made using a digital power meter and power supply. The sample was operated at rated voltage and was stabilized before measurement. The total harmonic distortion was calculated.</p>

Test Results

Voltage (Vac)	Frequency (Hz)	Current (A)	Power (W)	Power Factor	iTHD(%)
120.0	60	0.082	9.6	0.975	12.60

5.0 Equipment List:

Equipment ID	Equipment Name	Last Cal.	Due Cal.
NTC-F01-001	Goniophotometer System	2025-11-06	2026-11-05
NTC-F01-006	2.0 meter Integrating Sphere	2025-11-06	2026-11-05
NTC-F01-012	Standard Lamp	2025-10-27	2026-10-26
NTC-F01-013	Standard Lamp	2025-10-27	2026-10-26
NTC-F01-031	Digital Power Meter	2025-08-04	2026-08-03
NTC-F01-019	Temperature & Humidity Meter	2025-10-23	2026-10-22

*****End of Report*****