

Photometric Test Report

Relevant Standards

- ☒ ANSI/IES LM-79-19
- ☒ ANSI C82.77-2020

Prepared For

RAB Lighting Inc.

Address: 408 W 14th St New York, NY 10014

Prepared By

Dongguan New Testing Centre Co., Ltd.

Address: 3F No. 1 the 1st North Industry Road, Songshan Lake Science & Technology Park, Dongguan, Guangdong, China

Prepare by:

Alan Wang

Engineer: Alan Wang

Date: 2025-12-10

Review by:

Vincent Yuan

Technical Lead: Vincent Yuan

Issue Date: 2025-12-10

Revised Date: N/A

1.0 Test Summary

DLC Technical Requirements V6.0

Track or Mono-Point Luminaires				
Requirement Category	Test Method	Requirements		Test Value
Luminaire Output (lm) (Goniophotometer – Section 4.2)	ANSI/IES LM-79-19	≥250lm		748
Minimum Luminaire Efficacy (lm/W) (Goniophotometer – Section 4.2)	ANSI/IES LM-79-19	Standard	Premium	90.1
		95	110	
Power (Input Wattage) (W) (Goniophotometer – Section 4.2)	ANSI/IES LM-79-19	Worst Case		8.3
Total Harmonic Distortion (A%) (THD & PF – Section 4.3)	ANSI C82.77:2002 ANSI C82-77-10:2020	20.00%	120V	13.52
Power Factor (THD & PF – Section 4.3)	ANSI C82.77:2002 ANSI C82-77-10:2020	0.9	120V	0.961
Allowable CCTs* (K) (Integrating Sphere – Section 4.1)	ANSI/IES LM-79-19	7 steps	3045±175	3069
		4 steps	3045±100	
Chromaticity (D _{uv}) (Integrating Sphere – Section 4.1)	ANSI/IES LM-79-19	7 steps	0.0001±0.0060	-0.0023
		4 steps	0.0001±0.0033	
Minimum CRI (Integrating Sphere – Section 4.1)	ANSI/IES LM-79 19 CIE13.3-1995	≥80		93.6
Minimum R9 (Integrating Sphere – Section 4.1)	ANSI/IES LM-79-19 CIE13.3-1995	≥0		66
Minimum Rf (Integrating Sphere – Section 4.1)	ANSI/IES TM-30-24	≥70		91
Minimum Rg (Integrating Sphere – Section 4.1)	ANSI/IES TM-30-24	≥89		98
IES Rcs,h1 (Integrating Sphere – Section 4.1)	ANSI/IES TM-30-24	-12%≤IES Rcs,h1≤+23%		-4%
Zonal Lumen Requirement (0°-90°) (Goniophotometer – Section 4.2)	ANSI/IES LM-79-19	≥ 85%		100.0%
Input Voltage (V)				
(Goniophotometer – Section 4.2)	ANSI/IES LM-79-19	Worst Cast		120.0
(Goniophotometer – Section 4.2)		Non-Worst Case		N/A
Input Current (A)				
(Goniophotometer – Section 4.2)	ANSI/IES LM-79-19	Worst Case		0.072
(Goniophotometer – Section 4.2)		Non-Worst Case		N/A
Power (Input Wattage – W)				
(Goniophotometer – Section 4.2)	ANSI/IES LM-79-19	Worst Case		8.3
(Goniophotometer – Section 4.2)		Non-Worst Case		N/A

2.0 Test List

Test Item	Test	Test Date	Model Number	Build Level	Sample No.
1	Integrating Sphere Test	2025-12-08	PIVOTSB @3000K	-	250903028-S1
2	Goniophotometer Test	2025-12-08	PIVOTSB @3000K	-	250903028-S1
3	THD and PF Test	2025-12-08	PIVOTSB @3000K	-	250903028-S1

Remark (If any):

1. The results contained in this report pertain only to the tested samples.
2. This report shall not be reproduced, no limited part or full, without approval of Dongguan New Testing Centre Co., Ltd.
3. This report must not be used by the client to claim product certification, approval, or endorsement by NVLAP, NIST or any agency of the U.S. Government.

3.0 Product Description

Luminaire Description: Model No. PIVOTSB @3000K, color tunable from 3000K, 4000K and 5000K.

Electrical Specification: 120Vac, 60Hz

Photos of Luminaire Characteristics



4.0 LM-79 Measurement and Test Results

4.1 Integrating Sphere Test

Model No.	PIVOTSB @3000K	Sample ID	250903028-S1
Operate time (Min.)	10	Stabilization time (Min.)	60
Temperature (°C)	25.4	Humidity (%RH)	41.0

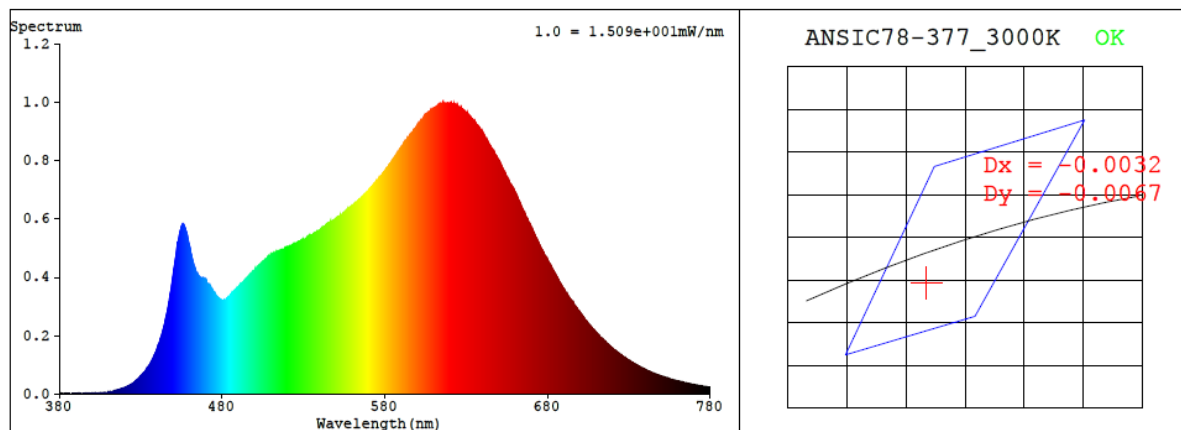
Test Method
<p>The Samples were tested according to the ANSI/IES LM-79:2019.</p> <p>Photometric parameters were measured using an integrating sphere, a spectroradiometer and software. The ambient temperature condition inside the sphere was maintained at 25±1°C.</p> <p>The sample measurements were made using a spectroradiometer connected by a fiber optic cable and detector through the detector port of the integrating sphere.</p> <p>The voltage of an AC power supply (RMS voltage) or DC power supply (instantaneous voltage) applied to the device under test shall be regulated to within ±0.2 percent under load.</p> <p>The sample was measured using 4π geometry and operated at rated voltage and was stabilized before measurement. Chromaticity coordinates, correlated color temperature and color rendering index were calculated from the spectral radiant flux measurements taken at 1 nm intervals over the range of 380 to 780nm.</p>

Test Result

Voltage (Vac)	Frequency (Hz)	Current (A)	Power (W)	Power Factor
120.0	60	0.072	8.3	0.961

CCT (K)	CRI	R9	Duv	SDCM	Rf	Rg	IES Rcs,h1
3069	93.6	66	-0.0023	3.3	91	98	-4%

4.1 Integrating Sphere Test



Colorimetric Parameters

Chromaticity Coordinate: $x = 0.4290$ $y = 0.3956$ / $u' = 0.2491$ $v' = 0.5168$ ($duv = -2.28e-03$)

CCT= 3069K Prcp WL: $L_d = 583.4\text{nm}$ Purity=47.5%

Peak WL: $L_p = 616\text{nm}$ FWHM: $=155.8\text{nm}$ Ratio: $R=24.5\%$ $G=71.8\%$ $B=3.7\%$

Render Index: $R_a = 93.6$ AvgR = 92.2 TM30: $R_f = 92$ $R_g = 99$

EEL: 0.13962 A+

R1 =97 R2 =98 R3 =95 R4 =95 R5 =97 R6 =94 R7 =90

R8 =83 R9 =66 R10=97 R11=98 R12=84 R13=99 R14=98 R15=93

4.1 Integrating Sphere Test

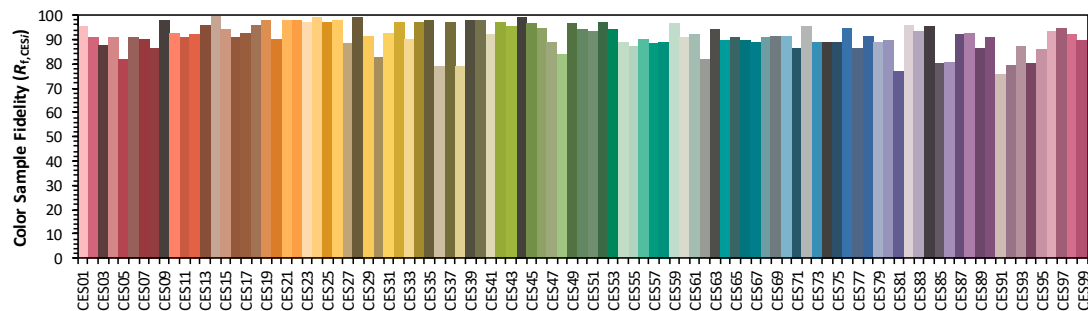
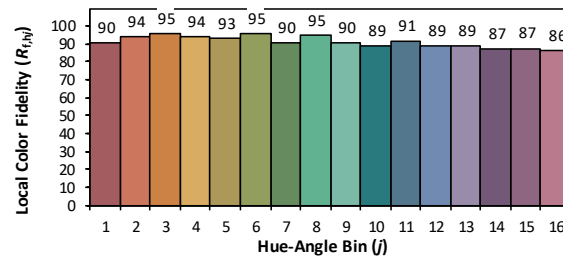
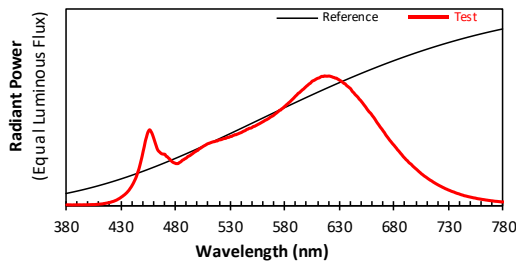
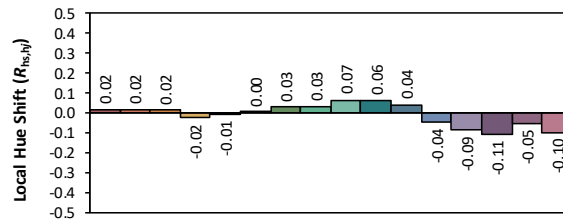
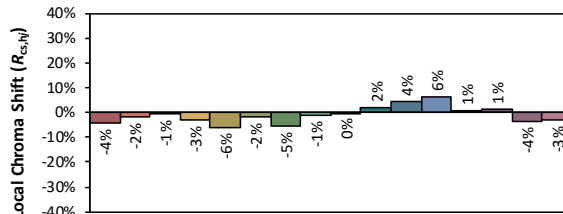
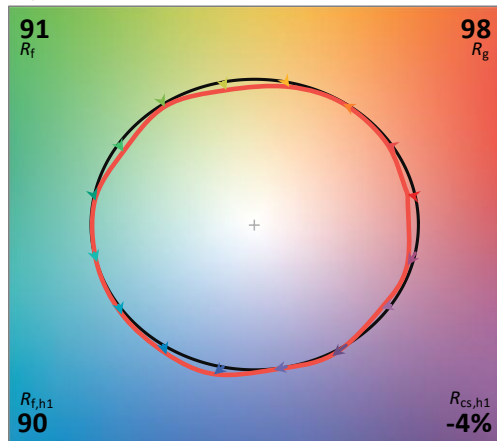
ANSI/IES TM-30-24 Color Rendition Report

Source: BXRV-TR-3050G-10A1-B-23
Date: 2025/12/10
Notes: N/A

Make: RAB Lighting Inc.
Model: PIVOTSB @3000K
Other: N/A

CCT: 3068 K
 D_{uv} : -0.0023

P2 V- F2



TM-30 Advanced Calculator Version 2.04

Created

2025/12/10

4.1 Integrating Sphere Test

Spectral Distribution over Visible Wavelength											
WL (nm)	Radiant (W/nm)	WL (nm)	Radiant (W/nm)	WL (nm)	Radiant (W/nm)	WL (nm)	Radiant (W/nm)	WL (nm)	Radiant (W/nm)	WL (nm)	Radiant (W/nm)
380	2.30E-03	447	3.09E-01	514	4.89E-01	581	7.73E-01	648	8.19E-01	715	1.83E-01
381	2.60E-03	448	3.42E-01	515	4.90E-01	582	7.80E-01	649	8.11E-01	716	1.77E-01
382	2.10E-03	449	3.77E-01	516	4.93E-01	583	7.88E-01	650	8.00E-01	717	1.72E-01
383	2.40E-03	450	4.17E-01	517	4.96E-01	584	7.95E-01	651	7.90E-01	718	1.67E-01
384	2.00E-03	451	4.53E-01	518	4.96E-01	585	8.02E-01	652	7.78E-01	719	1.62E-01
385	1.00E-03	452	4.95E-01	519	5.03E-01	586	8.11E-01	653	7.67E-01	720	1.57E-01
386	2.30E-03	453	5.25E-01	520	5.04E-01	587	8.19E-01	654	7.56E-01	721	1.53E-01
387	2.00E-03	454	5.56E-01	521	5.05E-01	588	8.28E-01	655	7.43E-01	722	1.48E-01
388	2.20E-03	455	5.74E-01	522	5.08E-01	589	8.37E-01	656	7.32E-01	723	1.44E-01
389	2.20E-03	456	5.82E-01	523	5.11E-01	590	8.46E-01	657	7.21E-01	724	1.39E-01
390	2.50E-03	457	5.71E-01	524	5.14E-01	591	8.53E-01	658	7.13E-01	725	1.35E-01
391	2.10E-03	458	5.55E-01	525	5.15E-01	592	8.63E-01	659	7.03E-01	726	1.31E-01
392	2.60E-03	459	5.33E-01	526	5.17E-01	593	8.68E-01	660	6.91E-01	727	1.27E-01
393	2.10E-03	460	5.08E-01	527	5.22E-01	594	8.76E-01	661	6.80E-01	728	1.24E-01
394	2.00E-03	461	4.81E-01	528	5.23E-01	595	8.84E-01	662	6.69E-01	729	1.19E-01
395	2.70E-03	462	4.56E-01	529	5.26E-01	596	8.91E-01	663	6.55E-01	730	1.16E-01
396	2.80E-03	463	4.32E-01	530	5.31E-01	597	8.97E-01	664	6.42E-01	731	1.13E-01
397	2.30E-03	464	4.18E-01	531	5.30E-01	598	9.06E-01	665	6.30E-01	732	1.09E-01
398	2.70E-03	465	4.11E-01	532	5.37E-01	599	9.14E-01	666	6.18E-01	733	1.06E-01
399	2.90E-03	466	4.02E-01	533	5.39E-01	600	9.22E-01	667	6.05E-01	734	1.03E-01
400	3.20E-03	467	3.97E-01	534	5.44E-01	601	9.28E-01	668	5.95E-01	735	1.00E-01
401	3.30E-03	468	3.95E-01	535	5.44E-01	602	9.36E-01	669	5.84E-01	736	9.59E-02
402	3.80E-03	469	3.93E-01	536	5.48E-01	603	9.41E-01	670	5.71E-01	737	9.30E-02
403	3.80E-03	470	3.92E-01	537	5.51E-01	604	9.50E-01	671	5.61E-01	738	8.98E-02
404	4.30E-03	471	3.78E-01	538	5.55E-01	605	9.58E-01	672	5.46E-01	739	8.79E-02
405	4.00E-03	472	3.74E-01	539	5.58E-01	606	9.62E-01	673	5.34E-01	740	8.47E-02
406	4.50E-03	473	3.65E-01	540	5.61E-01	607	9.66E-01	674	5.23E-01	741	8.15E-02
407	5.30E-03	474	3.58E-01	541	5.66E-01	608	9.71E-01	675	5.12E-01	742	7.89E-02
408	6.10E-03	475	3.49E-01	542	5.71E-01	609	9.76E-01	676	5.00E-01	743	7.68E-02
409	6.20E-03	476	3.40E-01	543	5.74E-01	610	9.80E-01	677	4.91E-01	744	7.31E-02
410	7.80E-03	477	3.33E-01	544	5.79E-01	611	9.82E-01	678	4.80E-01	745	7.16E-02
411	8.20E-03	478	3.28E-01	545	5.86E-01	612	9.87E-01	679	4.70E-01	746	6.96E-02
412	9.00E-03	479	3.25E-01	546	5.87E-01	613	9.92E-01	680	4.61E-01	747	6.75E-02
413	1.00E-02	480	3.21E-01	547	5.93E-01	614	9.95E-01	681	4.50E-01	748	6.52E-02
414	1.21E-02	481	3.21E-01	548	5.94E-01	615	9.93E-01	682	4.40E-01	749	6.35E-02
415	1.32E-02	482	3.21E-01	549	5.96E-01	616	9.98E-01	683	4.28E-01	750	6.16E-02
416	1.50E-02	483	3.28E-01	550	6.02E-01	617	9.97E-01	684	4.20E-01	751	5.99E-02
417	1.63E-02	484	3.32E-01	551	6.08E-01	618	9.96E-01	685	4.09E-01	752	5.78E-02
418	1.86E-02	485	3.39E-01	552	6.09E-01	619	9.96E-01	686	3.99E-01	753	5.58E-02
419	2.03E-02	486	3.47E-01	553	6.13E-01	620	9.97E-01	687	3.89E-01	754	5.50E-02
420	2.20E-02	487	3.51E-01	554	6.18E-01	621	9.96E-01	688	3.78E-01	755	5.28E-02
421	2.51E-02	488	3.57E-01	555	6.23E-01	622	9.94E-01	689	3.69E-01	756	5.06E-02
422	2.73E-02	489	3.62E-01	556	6.27E-01	623	9.91E-01	690	3.60E-01	757	4.91E-02
423	2.99E-02	490	3.68E-01	557	6.31E-01	624	9.87E-01	691	3.50E-01	758	4.79E-02
424	3.35E-02	491	3.76E-01	558	6.36E-01	625	9.85E-01	692	3.44E-01	759	4.66E-02
425	3.68E-02	492	3.79E-01	559	6.41E-01	626	9.81E-01	693	3.33E-01	760	4.50E-02
426	4.09E-02	493	3.84E-01	560	6.46E-01	627	9.81E-01	694	3.25E-01	761	4.36E-02
427	4.60E-02	494	3.91E-01	561	6.51E-01	628	9.75E-01	695	3.19E-01	762	4.24E-02
428	5.05E-02	495	3.96E-01	562	6.57E-01	629	9.70E-01	696	3.12E-01	763	4.11E-02
429	5.59E-02	496	4.03E-01	563	6.60E-01	630	9.65E-01	697	3.02E-01	764	3.94E-02
430	6.22E-02	497	4.09E-01	564	6.65E-01	631	9.60E-01	698	2.95E-01	765	3.86E-02
431	6.77E-02	498	4.14E-01	565	6.70E-01	632	9.53E-01	699	2.87E-01	766	3.71E-02
432	7.45E-02	499	4.20E-01	566	6.76E-01	633	9.48E-01	700	2.80E-01	767	3.61E-02
433	8.07E-02	500	4.23E-01	567	6.82E-01	634	9.40E-01	701	2.72E-01	768	3.49E-02
434	8.85E-02	501	4.32E-01	568	6.86E-01	635	9.38E-01	702	2.64E-01	769	3.36E-02
435	9.64E-02	502	4.37E-01	569	6.91E-01	636	9.27E-01	703	2.57E-01	770	3.29E-02
436	1.06E-01	503	4.43E-01	570	6.97E-01	637	9.20E-01	704	2.50E-01	771	3.15E-02
437	1.16E-01	504	4.48E-01	571	7.05E-01	638	9.14E-01	705	2.42E-01	772	3.03E-02
438	1.28E-01	505	4.54E-01	572	7.11E-01	639	9.06E-01	706	2.36E-01	773	2.93E-02
439	1.40E-01	506	4.59E-01	573	7.18E-01	640	9.00E-01	707	2.29E-01	774	2.89E-02
440	1.55E-01	507	4.63E-01	574	7.25E-01	641	8.87E-01	708	2.22E-01	775	2.80E-02
441	1.70E-01	508	4.69E-01	575	7.33E-01	642	8.75E-01	709	2.17E-01	776	2.71E-02
442	1.88E-01	509	4.74E-01	576	7.35E-01	643	8.68E-01	710	2.11E-01	777	2.63E-02
443	2.05E-01	510	4.77E-01	577	7.44E-01	644	8.56E-01	711	2.04E-01	778	2.51E-02
444	2.27E-01	511	4.80E-01	578	7.49E-01	645	8.48E-01	712	1.99E-01	779	2.49E-02
445	2.53E-01	512	4.83E-01	579	7.58E-01	646	8.40E-01	713	1.93E-01	780	2.50E-02
446	2.77E-01	513	4.86E-01	580	7.64E-01	647	8.30E-01	714	1.89E-01	N/A	N/A

4.0 LM-79 Measurement and Test Results

4.2 Goniophotometer Test

Model No.	PIVOTSB @3000K	Sample ID	250903028-S1
Operate time (Min.)	30	Stabilization time (Min.)	60
Temperature (°C)	25.0	Humidity (%RH)	42.1

Test Method
<p>The Samples were tested according to the ANSI/IES LM-79:2019.</p> <p>Photometric parameters were measured using a type C goniophotometer and software.</p> <p>The ambient temperature shall be maintained at $25 \pm 1^\circ\text{C}$, measured at a point not more than 1 m from the sample and at the same height as the sample.</p> <p>The voltage of an AC power supply (RMS voltage) or DC power supply (instantaneous voltage) applied to the device under test shall be regulated to within ± 0.2 percent under load.</p> <p>The samples were operated at rated voltage and was stabilized before measurement. Luminous flux, luminaire efficacy, zonal lumen were calculated from the software taken at 1.0° vertical intervals and 15° horizontal intervals.</p>

Test Conditions

Condition	Voltage (Vac)	Frequency (Hz)	Current (A)	Power (W)	Power Factor
WORST CASE	120.0	60	0.072	8.3	0.961
NON-WORST CASE	N/A	N/A	N/A	N/A	N/A

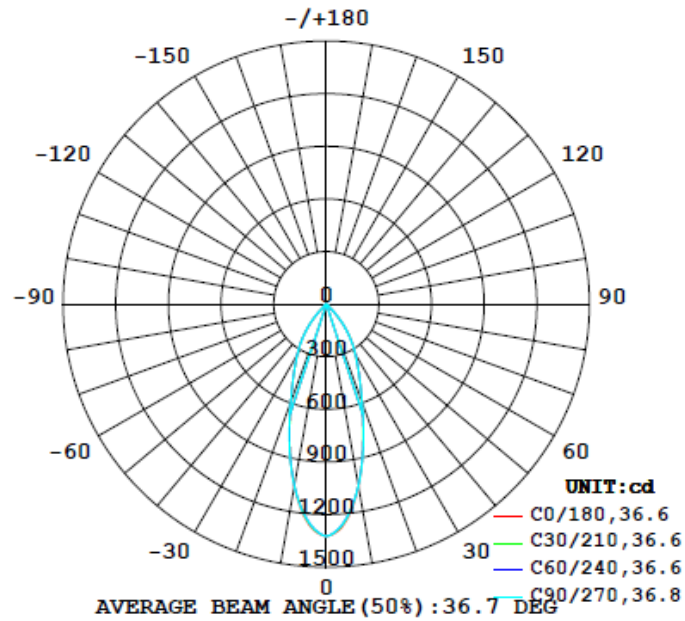
Test Result

Flux (lm)	Field Angle (10%)		Beam Angle (50%)		Luminous Efficacy (lm/W)	Zonal Lumen Requirement
	C0-180	C90-270	C0-180	C90-270		(0°-90°)
748	80.9	81.1	36.8	36.9	90.1	100.0%

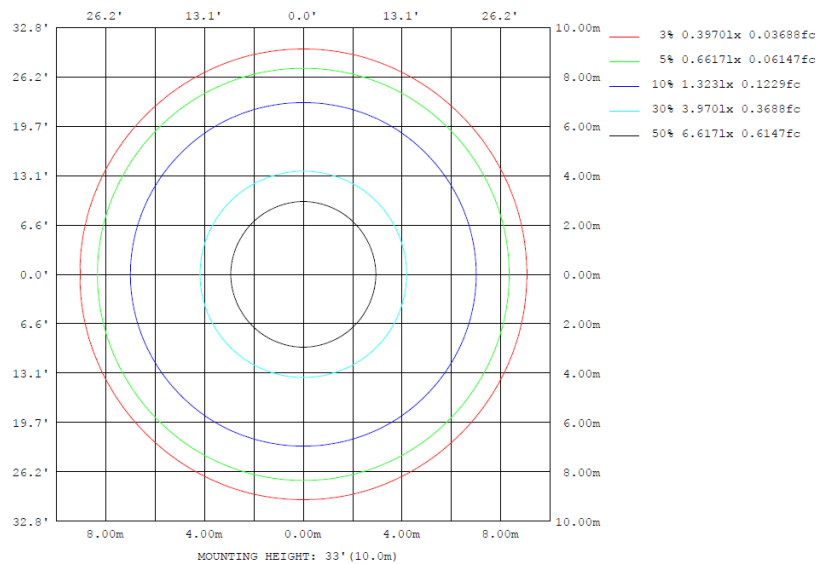
4.2 Goniophotometer Test

Lighting Distribution Curve

LUMINOUS INTENSITY DISTRIBUTION DIAGRAM



Isolux Plot



4.2 Goniophotometer Test

Zonal Lumen Summary

γ	C0	C45	C90	C135	C180	C225	C270	C315	γ	Φ zone	Φ total	%lum, lamp
10	1056	1051	1054	1051	1056	1051	1054	1051	0- 10	112.3	112.3	15,15
20	595.6	596.3	596.9	596.3	595.6	596.3	596.9	596.3	10- 20	224.6	336.9	45,45
30	332.9	332.5	331.7	332.5	332.9	332.5	331.7	332.5	20- 30	204.0	540.9	72,3,72,3
40	142.2	142.8	143.6	142.8	142.2	142.8	143.6	142.8	30- 40	147.2	688.1	92,92
50	16.72	17.15	17.11	17.15	16.72	17.15	17.11	17.15	40- 50	44.43	732.6	97,9,97,9
60	6.800	6.972	7.096	6.972	6.800	6.972	7.096	6.972	50- 60	10.81	743.4	99,4,99,4
70	1.852	1.923	1.867	1.923	1.852	1.923	1.867	1.923	60- 70	3.629	747.0	99,9,99,9
80	0.0205	0.0243	0.0233	0.0243	0.0205	0.0243	0.0233	0.0243	70- 80	1.006	748.0	100,100
90	0	0	0	0	0	0	0	0	80- 90	0.0068	748.0	100,100
100	0	0	0	0	0	0	0	0	90-100	0	748.0	100,100
110	0	0	0	0	0	0	0	0	100-110	0	748.0	100,100
120	0	0	0	0	0	0	0	0	110-120	0	748.0	100,100
130	0	0	0	0	0	0	0	0	120-130	0	748.0	100,100
140	0	0	0	0	0	0	0	0	130-140	0	748.0	100,100
150	0	0	0	0	0	0	0	0	140-150	0	748.0	100,100
160	0	0	0	0	0	0	0	0	150-160	0	748.0	100,100
170	0	0	0	0	0	0	0	0	160-170	0	748.0	100,100
180	0	0	0	0	0	0	0	0	170-180	0	748.0	100,100
DEG	LUMINOUS INTENSITY:cd									UNIT:lm		

	Zonal (lm)		Total (lm)	Percent
0-10	112.26	0-10	112.26	15.01%
10-20	224.63	0-20	336.89	45.04%
20-30	204.02	0-30	540.91	72.31%
30-40	147.24	0-40	688.15	91.99%
40-50	44.43	0-50	732.58	97.93%
50-60	10.81	0-60	743.39	99.38%
60-70	3.63	0-70	747.02	99.86%
70-80	1.01	0-80	748.03	100.00%
80-90	0.01	0-90	748.04	100.00%
90-100	0.00	0-100	748.04	100.00%
100-110	0.00	0-110	748.04	100.00%
110-120	0.00	0-120	748.04	100.00%
120-130	0.00	0-130	748.04	100.00%
130-140	0.00	0-140	748.04	100.00%
140-150	0.00	0-150	748.04	100.00%
150-160	0.00	0-160	748.04	100.00%
160-170	0.00	0-170	748.04	100.00%
170-180	0.00	0-180	748.04	100.00%

4.2 Goniophotometer Test

Luminous Distribution Intensity Data

Table--1

UNIT: cd

C (DEG) γ (DEG)	0	15	30	45	60	75	90	105	120	135	150	165	180	195	210	225	240	255	270
0	1323	1323	1323	1323	1323	1323	1323	1323	1323	1323	1323	1323	1323	1323	1323	1323	1323	1323	1323
5	1248	1245	1241	1238	1236	1236	1237	1236	1236	1238	1241	1245	1248	1245	1241	1238	1236	1236	1237
10	1056	1053	1051	1051	1051	1052	1054	1052	1051	1051	1051	1053	1056	1053	1051	1051	1051	1052	1054
15	815	813	812	813	815	817	819	817	815	813	812	813	815	813	812	813	815	817	819
20	596	595	596	596	596	596	597	596	596	596	596	595	596	595	596	596	596	596	597
25	442	440	441	442	442	441	440	441	442	442	441	440	442	440	441	442	442	441	440
30	333	331	331	332	333	332	332	332	333	332	331	333	331	333	331	332	333	332	332
35	241	240	239	238	238	237	236	237	238	238	239	240	241	240	239	238	238	237	236
40	142	142	142	143	144	144	144	144	143	142	142	142	142	142	142	143	144	144	144
45	41.4	41.9	43.3	45.1	47.8	50.2	49.4	50.2	47.8	45.1	43.3	41.9	41.4	41.9	43.3	45.1	47.8	50.2	49.4
50	16.7	16.6	16.8	17.2	17.4	17.3	17.1	17.3	17.4	17.2	16.8	16.6	16.7	16.6	16.8	17.2	17.4	17.3	17.1
55	12.0	11.9	12.0	12.3	12.6	12.5	12.4	12.5	12.6	12.3	12.0	11.9	12.0	11.9	12.0	12.3	12.6	12.5	12.4
60	6.80	6.66	6.78	6.97	7.19	7.18	7.10	7.18	7.19	6.97	6.78	6.66	6.80	6.66	6.78	6.97	7.19	7.18	7.10
65	3.17	3.11	3.21	3.34	3.45	3.36	3.28	3.36	3.45	3.34	3.21	3.11	3.17	3.11	3.21	3.34	3.45	3.36	3.28
70	1.85	1.81	1.87	1.92	1.96	1.92	1.87	1.92	1.96	1.92	1.87	1.81	1.85	1.81	1.87	1.92	1.96	1.92	1.87
75	0.97	0.94	0.96	1.00	1.01	1.01	0.98	1.01	1.01	1.00	0.96	0.94	0.97	0.94	0.96	1.00	1.01	1.01	0.98
80	0.02	0.02	0.02	0.02	0.02	0.02	0.02	0.02	0.02	0.02	0.02	0.02	0.02	0.02	0.02	0.02	0.02	0.02	0.02
85	0.01	0.00	0.01	0.01	0.01	0.01	0.01	0.01	0.01	0.01	0.01	0.00	0.01	0.00	0.01	0.01	0.01	0.01	0.01
90	0.00	0.00	0.00	0.00	0.00	0.00	0.00	0.00	0.00	0.00	0.00	0.00	0.00	0.00	0.00	0.00	0.00	0.00	0.00
95	0.00	0.00	0.00	0.00	0.00	0.00	0.00	0.00	0.00	0.00	0.00	0.00	0.00	0.00	0.00	0.00	0.00	0.00	0.00
100	0.00	0.00	0.00	0.00	0.00	0.00	0.00	0.00	0.00	0.00	0.00	0.00	0.00	0.00	0.00	0.00	0.00	0.00	0.00
105	0.00	0.00	0.00	0.00	0.00	0.00	0.00	0.00	0.00	0.00	0.00	0.00	0.00	0.00	0.00	0.00	0.00	0.00	0.00
110	0.00	0.00	0.00	0.00	0.00	0.00	0.00	0.00	0.00	0.00	0.00	0.00	0.00	0.00	0.00	0.00	0.00	0.00	0.00
115	0.00	0.00	0.00	0.00	0.00	0.00	0.00	0.00	0.00	0.00	0.00	0.00	0.00	0.00	0.00	0.00	0.00	0.00	0.00
120	0.00	0.00	0.00	0.00	0.00	0.00	0.00	0.00	0.00	0.00	0.00	0.00	0.00	0.00	0.00	0.00	0.00	0.00	0.00
125	0.00	0.00	0.00	0.00	0.00	0.00	0.00	0.00	0.00	0.00	0.00	0.00	0.00	0.00	0.00	0.00	0.00	0.00	0.00
130	0.00	0.00	0.00	0.00	0.00	0.00	0.00	0.00	0.00	0.00	0.00	0.00	0.00	0.00	0.00	0.00	0.00	0.00	0.00
135	0.00	0.00	0.00	0.00	0.00	0.00	0.00	0.00	0.00	0.00	0.00	0.00	0.00	0.00	0.00	0.00	0.00	0.00	0.00
140	0.00	0.00	0.00	0.00	0.00	0.00	0.00	0.00	0.00	0.00	0.00	0.00	0.00	0.00	0.00	0.00	0.00	0.00	0.00
145	0.00	0.00	0.00	0.00	0.00	0.00	0.00	0.00	0.00	0.00	0.00	0.00	0.00	0.00	0.00	0.00	0.00	0.00	0.00
150	0.00	0.00	0.00	0.00	0.00	0.00	0.00	0.00	0.00	0.00	0.00	0.00	0.00	0.00	0.00	0.00	0.00	0.00	0.00
155	0.00	0.00	0.00	0.00	0.00	0.00	0.00	0.00	0.00	0.00	0.00	0.00	0.00	0.00	0.00	0.00	0.00	0.00	0.00
160	0.00	0.00	0.00	0.00	0.00	0.00	0.00	0.00	0.00	0.00	0.00	0.00	0.00	0.00	0.00	0.00	0.00	0.00	0.00
165	0.00	0.00	0.00	0.00	0.00	0.00	0.00	0.00	0.00	0.00	0.00	0.00	0.00	0.00	0.00	0.00	0.00	0.00	0.00
170	0.00	0.00	0.00	0.00	0.00	0.00	0.00	0.00	0.00	0.00	0.00	0.00	0.00	0.00	0.00	0.00	0.00	0.00	0.00
175	0.00	0.00	0.00	0.00	0.00	0.00	0.00	0.00	0.00	0.00	0.00	0.00	0.00	0.00	0.00	0.00	0.00	0.00	0.00
180	0.00	0.00	0.00	0.00	0.00	0.00	0.00	0.00	0.00	0.00	0.00	0.00	0.00	0.00	0.00	0.00	0.00	0.00	0.00

Table--2

UNIT: cd

C (DEG) γ (DEG)	285	300	315	330	345														
0	1323	1323	1323	1323	1323														
5	1236	1236	1238	1241	1245														
10	1052	1051	1051	1051	1053														
15	817	815	813	812	813														
20	596	596	596	596	595														
25	441	442	442	441	440														
30	332	333	332	331	331														
35	237	238	238	239	240														
40	144	144	143	142	142														
45	50.2	47.8	45.1	43.3	41.9														
50	17.3	17.4	17.2	16.8	16.6														
55	12.5	12.6	12.3	12.0	11.9														
60	7.18	7.19	6.97	6.78	6.66														
65	3.36	3.45	3.34	3.21	3.11														
70	1.92	1.96	1.92	1.87	1.81														
75	1.01	1.01	1.00	0.96	0.94														
80	0.02	0.02	0.02	0.02	0.02														
85	0.01	0.01	0.01	0.01	0.00														
90	0.00	0.00	0.00	0.00	0.00														
95	0.00	0.00	0.00	0.00	0.00														
100	0.00	0.00	0.00	0.00	0.00														
105	0.00	0.00	0.00	0.00	0.00														
110	0.00	0.00	0.00	0.00	0.00														
115	0.00	0.00	0.00	0.00	0.00														
120	0.00	0.00	0.00	0.00	0.00														
125	0.00	0.00	0.00	0.00	0.00														
130	0.00	0.00	0.00	0.00	0.00														
135	0.00	0.00	0.00	0.00	0.00														
140	0.00	0.00	0.00	0.00	0.00														
145	0.00	0.00	0.00	0.00	0.00														
150	0.00	0.00	0.00	0.00	0.00														
155	0.00	0.00	0.00	0.00	0.00														
160	0.00	0.00	0.00	0.00	0.00														
165	0.00	0.00	0.00	0.00	0.00														
170	0.00	0.00	0.00	0.00	0.00														
175	0.00	0.00	0.00	0.00	0.00														
180	0.00	0.00	0.00	0.00	0.00														

4.0 LM-79 Measurement and Test Results

4.3 THD and PF Test

Model No.	PIVOTSB @3000K	Sample ID	250903028-S1
Temperature (°C)	25.4	Humidity (%RH)	41.0

Test Method
<p>The samples were tested according to the and ANSI C82.77: 2002 and ANSI C82.77-10:2020</p> <p>The total harmonic distortion shall be measured to the 40th order.</p> <p>The ambient temperature shall be maintained at $25 \pm 1^\circ\text{C}$. The sample measurements were made using a digital power meter and power supply. The sample was operated at rated voltage and was stabilized before measurement. The total harmonic distortion was calculated.</p>

Test Results

Voltage (Vac)	Frequency (Hz)	Current (A)	Power (W)	Power Factor	iTHD(%)
120.0	60	0.072	8.3	0.961	13.52

5.0 Equipment List:

Equipment ID	Equipment Name	Last Cal.	Due Cal.
NTC-F01-001	Goniophotometer System	2025-11-06	2026-11-05
NTC-F01-006	2.0 meter Integrating Sphere	2025-11-06	2026-11-05
NTC-F01-012	Standard Lamp	2025-10-27	2026-10-26
NTC-F01-013	Standard Lamp	2025-10-27	2026-10-26
NTC-F01-031	Digital Power Meter	2025-08-04	2026-08-03
NTC-F01-019	Temperature & Humidity Meter	2025-10-23	2026-10-22

*****End of Report*****