

# Original Data

## Relevant Standards

- IES LM-79-2008
- ANSI C82.77:2014

## Prepared For RAB lighting INC

408 W 14th St New York, NY 10014, USA (888) 722-1000

## Prepared By RAB lighting INC

408 W 14th St New York, NY 10014, USA (888) 722-1000

**Project Number**

**Data Number**

**Test Date**  
**2022/9/28**

## 1.0 Test List

Test Item	Test	Test Date	Model Number	Sample No.
1	Integrating Sphere Test	2022/9/28	PLC-7-O-835-HYB-G24Q	A1
2	Goniophotometer Test	2022/9/28	PLC-7-O-835-HYB-G24Q	A1
3	THD and PF Test	2022/9/28	PLC-7-O-835-HYB-G24Q	A1

## 1.1 Test Summary

Requirement Category	Test Method	Requirements	Test value	
<b>Integrating Sphere system</b>				
Power (W)	IES LM-79-2008	7 ±10%	6.756	
Lamp Output for bare lamp (lm)	IES LM-79-2008	830 ±10%	903.9	
Lamp Efficacy (lm/W)	IES LM-79-2008	> 106.7	130.6	
Allowable CCTs* (K)	IES LM-79-2008	7 step	5029±283	
		4 step	5029±220	
		7 step	3985±275	
		4 step	3985±154	
		7 step	3465±245	3414
		4 step	3465±124	
		7 step	3045±175	
		4 step	3045±100	
		7 step	2725 ± 145	
		4 step	2725 ± 83	
CRI	IES LM-79-2008 CIE 13.3-1995	>80	81.9	
R9	IES LM-79-2008 CIE 13.3-1995	>0	5	
Rf	ANSI/IES TM-30-18	>70	83	
Rg	ANSI/IES TM-30-18	>89	95	
Rcs,h1	ANSI/IES TM-30-18	Rcs=>-12%,h1<=23%		
Power Factor	ANSI C82.77:2014	>0.9	0.89	
Total Harmonic Distortion (A%)	ANSI C82.77:2014	<25%	16.20%	
<b>Goniophotometer system</b>				
Lamp Output (lm)	IES LM-79-2008	830 ±10%	933.2	
Luminaire Efficacy(lm/W)	IES LM-79-2008	> 106.7	139.7	
Beam Angle	IES LM-79-2008		341.8	

## 2.0 Production Description

**Luminaire Description:** PLC-7-O-835-HYB-G24Q

**Electrical Specification:** 120V~277V,50/60HZ

**Light source:**

**Manufacturer Of Light Source:** Seoul Semiconductor Co.,LTD

### Photos of Luminaire Characteristics



### 3.0 LM-79 Measurement and Test Results

#### 3.1 Integrating Sphere Test

Model No.	PLC-7-O-835-HYB-G24Q	Sample ID.	A1
Opreate time (Min.)	15	Stabilization time (Min.)	15
Temperature (°C)	25.3	Humidity %	55

Test Method
<p>The samples were tested according to the IES LM-79-2008.</p> <p>Photometric paramters were measured using an integrating sphere, a spectroradiometer and software. The ambient temperature condition inside the sphere was maintained at 25° C ± 1° C.</p> <p>The sample measurements were made using a spectroradiometer connected by a fiber optic cable and detector through the detector port of the integrating sphere.</p> <p>The voltage of an AC power supply (RMS voltage) or DC power supply (instantaneous voltage) applied to the device under test shall be regulated to within ±0.2 percent under load.</p> <p>The sample was measured using 4π geometry and operated at rated voltage and was stabilized before measurement. Chromaticity coordinates, correlated color temperature and color rendering index were calculated from the spectral radiant flux measurements taken at 1 nm intervals over the range of 380 to 780 nm.</p>

#### Test Conditions

Temperature (°C)	Voltage (Vac)	Frequency (Hz)	Current (A)	Power (W)	Power Factor	Flux (lm)	Efficacy (lm/W)
25.3	120.00	60.00	0.057	6.756	0.9805	927.1	137.2
25.3	277.02	60.00	0.028	6.919	0.8930	903.9	130.6

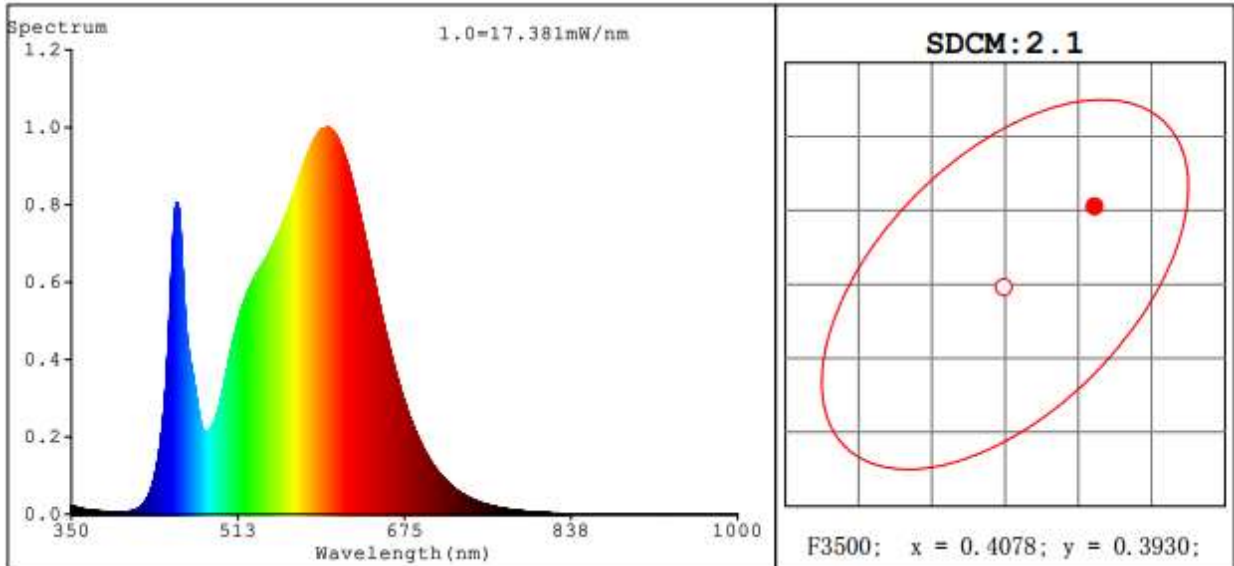
#### Test Result

Tc(K)	色差(Duv)	Rf	Rg	Ra	R9	SDCM
3414	1.3E-03	83	95	81.9	5.0	2.1
3430	1.0E-03	83	95	81.9	4.8	1.4

### 3.1 Integrating Sphere Test

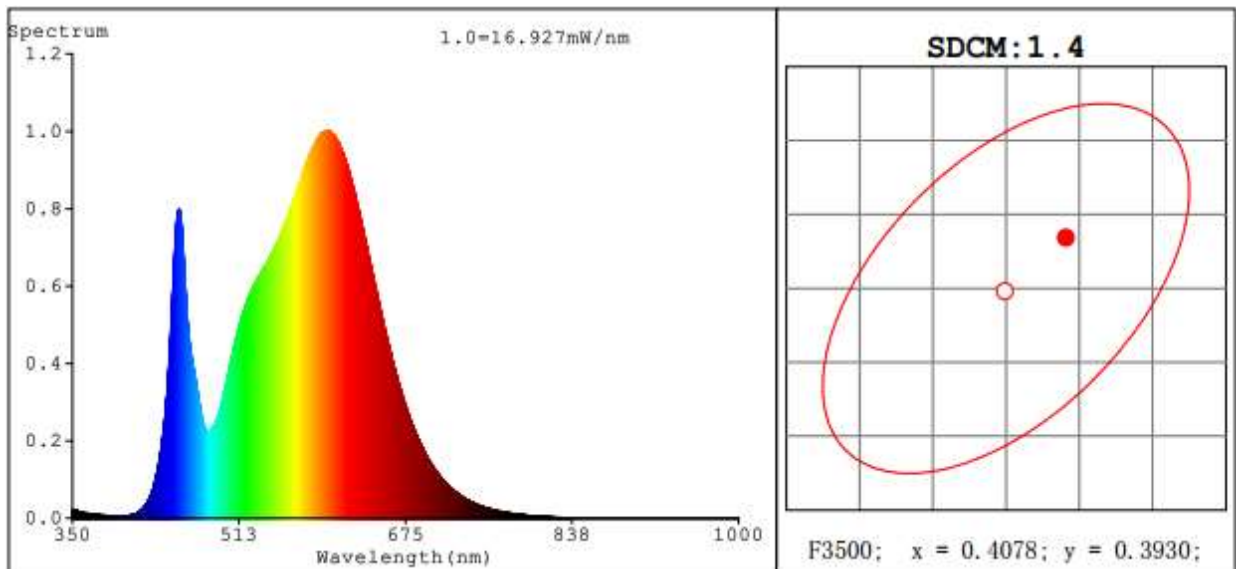
#### Spectroradiometric Parameters

120V



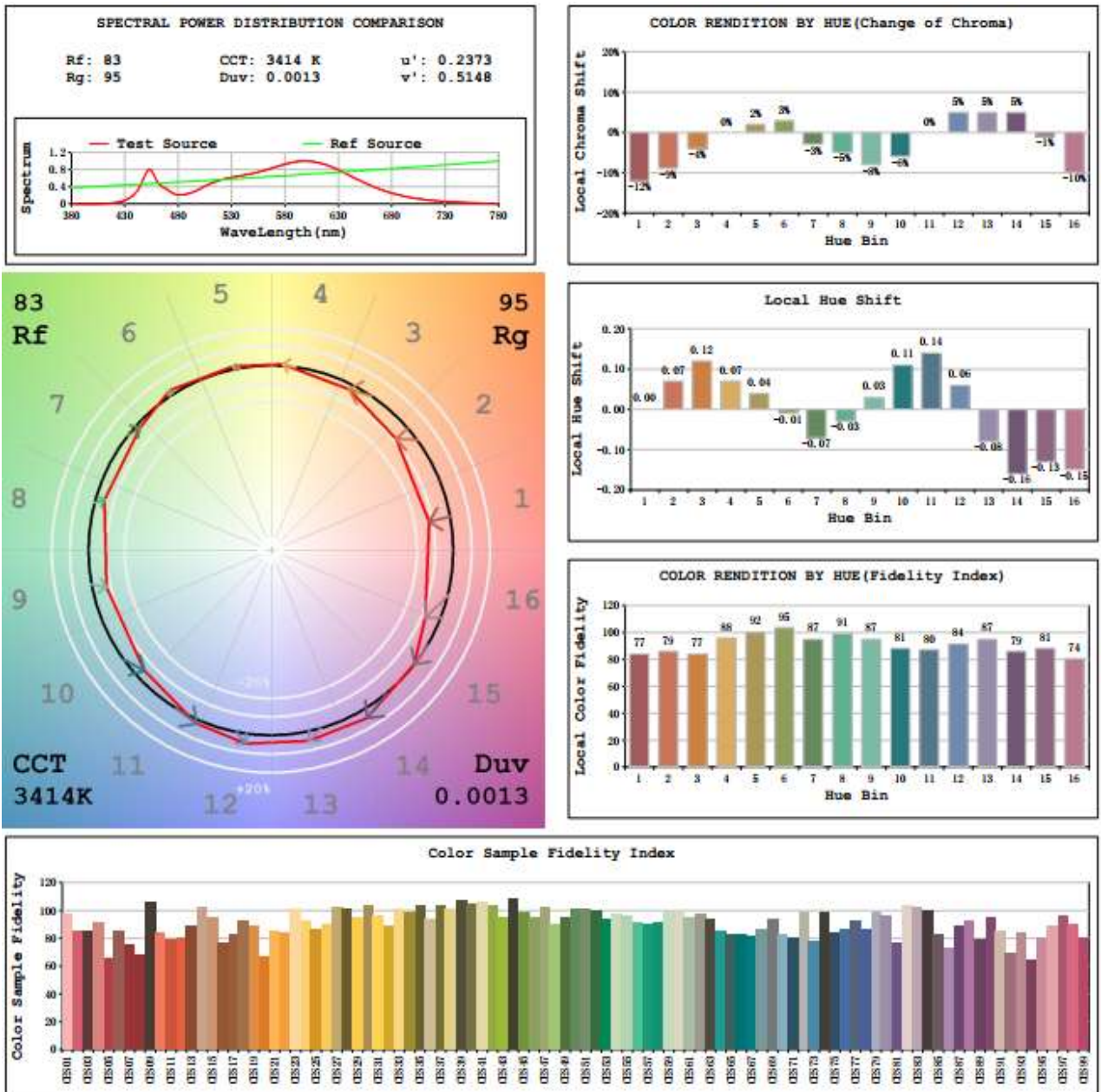
R1 =80.1 R2 =89.0 R3 =95.8 R4 =80.0 R5 =79.5 R6 =85.1 R7 =84.7  
 R8 =61.0 R9 =5.0 R10=73.8 R11=78.3 R12=60.7 R13=82.2 R14=97.8 R15=73.2

277V



R1 =80.0 R2 =89.3 R3 =96.0 R4 =79.6 R5 =79.6 R6 =85.5 R7 =84.4  
 R8 =60.7 R9 =4.8 R10=74.4 R11=77.7 R12=61.2 R13=82.3 R14=97.9 R15=73.3

### 3.2 Integrating Sphere Test - Minimum CCT



### 3.3 Goniophotometer Test

Model No.	PLC-7-O-835-HYB-G24Q	Sample ID.	0
Operate time (Min.)	15	Stabilization time (Min.)	15

#### Test Method

The samples were tested according to the IES LM-79-2008. Photometric parameters were measured using an integrating sphere, a spectroradiometer and software. The ambient temperature condition inside the sphere was maintained at 25° C + 1° C. The sample measurements were made using a spectroradiometer connected by a fiber optic cable and detector through the detector port of the integrating sphere. The voltage of an AC power supply (RMS voltage) or DC power supply (instantaneous voltage) applied to the device under test shall be regulated to within ± 0.2 percent under load.

The samples were operated at rated voltage and was stabilized before measurement. Luminous flux, luminaire efficacy, zonal lumen were calculated from the software taken at 0.5o vertical intervals and 10o horizontal intervals.

#### Test Conditions

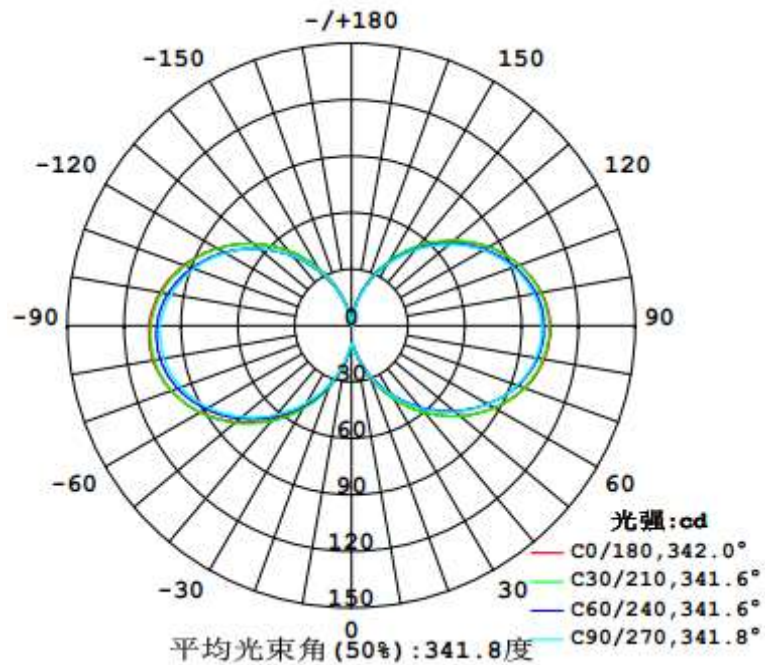
Temperature (°C)	Voltage (Vac)	Frequency (Hz)	Current (A)	Power (W)	Power Factor
25.3	120.00	60.00	0.057	6.7	0.980

#### Test Result

Flux(lm)	Beam Angle	Zonal Lumen Requirement(0°-60°)	SC (0°-180°)	SC (90°-270°)	Efficacy (lm/W)
933.2	341.8	19.6%	0.16	0.21	139.7

### 3.3 Goniophotometer Test

#### Light Distribution Curve



#### Zonal Lumen Summary

Zone	Lumens	%Lamp	%Fixt	Zone	Lumens
0-20	8.20	N.A.	0.90	0-10	1.31
0-30	25.95	N.A.	2.80	10-20	6.89
0-40	59.23	N.A.	6.30	20-30	17.76
0-60	182.83	N.A.	19.60	30-40	33.27
0-80	375.89	N.A.	40.30	40-50	51.94
0-90	485.83	N.A.	52.10	50-60	71.67
10-90	484.52	N.A.	51.90	60-70	89.75
20-40	51.03	N.A.	5.50	70-80	103.31
20-50	102.97	N.A.	11.00	80-90	109.94
40-70	213.35	N.A.	22.90	90-100	108.61
60-80	193.05	N.A.	20.70	100-110	99.41
70-80	103.31	N.A.	11.10	110-120	84.10
80-90	109.94	N.A.	11.80	120-130	65.17
90-110	208.02	N.A.	22.30	130-140	45.37
90-120	292.12	N.A.	31.30	140-150	27.35
90-130	357.28	N.A.	38.30	150-160	13.13
90-150	430.00	N.A.	46.10	160-170	3.97
90-180	447.36	N.A.	47.90	170-180	0.26
110-180	239.35	N.A.	25.60		
0-180	933.19	N.A.	100.00		

## 5.0 THD and PF Test

Model No.	PLC-7-O-835-HYB-G24Q	Sample ID.	A1
Temperature (°C)	25.3	Humidity %	49

Test Method
<p>The samples were tested according to the ANSI C82.77:2002.</p> <p>The total harmonic distortion shall be measured to the 40th order.</p> <p>The ambient temperature condition was maintained at 25° C ± 1° C. The sample measurements were made using a digital power meter and power supply. The sample was operated at rated voltage and was stabilized before measurement. The total harmonic distortion were calculated.</p>

### Test Results

Temperature (°C)	Voltage (Vac)	Frequency (Hz)	Current (A)	Power (W)	Power Factor	THD
25.3	120.00	60.00	0.057	6.8	0.981	16.20%
25.3	277.02	60.00	0.028	6.9	0.893	15.21%