



Report No.:
BLC2102003E-B-CP

LM-79-08 Test Report

For

RAB LIGHTING INC.

(Brand Name: RAB LIGHTING)

170 Ludlow Ave. Northvale, NJ, 07647

Outdoor Full-Cutoff Wall-Mounted Area Luminaires

Model name(s): SLIM17FA30ADJ

Remark: N/A

Representative (Tested) Model:
SLIM17FA30ADJ(Tested at 0% CCT Setting)
SLIM17FA30ADJ(Tested at 50% CCT Setting)
SLIM17FA30ADJ(Tested at 100% CCT Setting)

Model Different: All construction and rating are the same, except CCT

Test & Report By:

Sophie Yang

Engineer: Sophie Yang

Date: 2021-08-29

This is multiple listing report, the original report No. is BLC2102003E-B

Review By:



Jason Luo

Manager: Jason Luo



Report No.:
BLC2102003E-B-CP

1.1 Product Information:

Organization Name	RAB LIGHTING INC.	
Brand Name	RAB LIGHTING	
Model Number	SLIM17FA30ADJ	
SKU (if available)	N/A	
Type of Luminaire (for integral lamps, list base type and lamp type)	Outdoor Full-Cutoff Wall-Mounted Area Luminaires	
Rated Voltage / Frequency	120-277 VAC, 50/60 Hz	
Nominal Power	30W	
Rated Initial Lamp Lumen	--	
Declared CCT	3000K,4000K,5000K(Color tunable)	
LED Manufacturer	Bridgelux Inc.	
LED Model	BXEM-30C-12H-6C	
Sample Number	BLC2102003E-B1	
Luminaire Aperture (for downlights)	--	in.
Luminaire Length	--	mm
Luminaires Width	--	mm
Number of Units (modular products)	N/A	s
Photo		
		



1.2 Test Specifications:

Date of Receipt	2021-02-01
Date of Test	2021-02-02
Test item	<ol style="list-style-type: none">1. Total Luminous Flux2. Luminous Distribution Intensity3. Luminous Efficacy4. Correlated Color Temperature5. Color Rendering Index6. Chromaticity Coordinate7. Electrical Parameters
Reference Standard	<ol style="list-style-type: none">1. IES LM-79-2008 Electrical and Photometric Measurements of Solid-State Lighting Products2. ANSI C78.377-2008 Specifications for the Chromaticity of Solid State Lighting Products3. CIE 13.3-1995 Method of Measuring and Specifying Colour Rendering Properties of Light Sources4. CIE 15-2004 Technical Report Colorimetry5. IESNA LM-16-93 Practical Guide to Colorimetry of Light Source6. IESNA TM-16-05 Technical Memorandum on Light Emitting Diode (LED) Sources and Systems
Reference Work Instruction	BL-QP-033

1.3 Test Methods

1) Photometric and Light Distribution Measurement – Goniophotometer Method:

Photometric parameters were measured using the goniophotometer and software. The ambient temperature shall be maintained at $25\text{ }^{\circ}\text{C} \pm 1\text{ }^{\circ}\text{C}$, measured at a point not more than 1 m from the sample and at the same height as the sample. The sample was operated at 120 or rated Volts AC, 60Hz. It was stabilized before measurement was made. Luminous flux, luminaire efficacy, zonal lumen were calculated from the software taken at 1 ° vertical intervals and 22.5 ° horizontal intervals.

2) Chromaticity Measurement – Sphere-Spectroradiometer Method:

Chromaticity parameters were measured using an integrating sphere, a spectroradiometer and software. The ambient temperature condition inside the sphere was maintained at $25\text{ }^{\circ}\text{C} \pm 1\text{ }^{\circ}\text{C}$. The sample measurements were made using a spectroradiometer connected by a fiber optic cable and detector through the detector port of the integrating sphere. The sample was operated at 120 or rated Volts AC, 60Hz. It was stabilized before measurement was made. Chromaticity coordinates, correlated color temperature and color rendering index were calculated from the spectral power distribution taken at 5 nm intervals over the range of 380 to 780 nm.

3) Electrical Measurements:

Electrical parameters were measured using power meters incorporated in goniophotometer or sphere-spectroradiometer system. The ambient temperature surrounding the sample was maintained at $25\text{ }^{\circ}\text{C} \pm 1\text{ }^{\circ}\text{C}$. The sample was operated at 120 or rated Volts AC, 60Hz. It was stabilized before measurement was made. Voltage, frequency, current, power, power factor and total harmonic distortion were measured by and read from the power meter.



Certificate#4810.01

Report No.:
BLC2102003E-B-CP**2.1 Electrical, Photometric and Chromaticity Measurements***(Refer to Work Instruction BL-QP-033)*

Test date	2021-02-02	Test Ambient:	25.2 °C
Test Orientation	As intended	Stabilization Time (min)	90
Model Number	SLIM17FA30ADJ(Tested at 0% CCT Setting)		

Electrical Measurement:

Sample No.	Voltage (Vac)	Frequency (Hz)	Current (A)	Power (W)	Power Factor	THD %	
BLC210200	120.0	60	0.247	29.38	0.993	7.45	
3E-B1	277.0	60	0.114	28.99	0.919	15.45	
DLC Pass Criteria						>= 0.9(-3%)	<= 20(+5)

Chromaticity Measurement - Sphere-Spectroradiometer Method:

Parameter	Result
Test Voltage (V)	120.0
Frequency (Hz)	60
CCT (K)	2994
Duv	-0.0024
Chromaticity (x, y)	x=0.4339 y=0.3970
Chromaticity (u', v')	u(u')=0.2516 v'(v')=0.5181
Color Rendering Index (CRI)	72
R9	-38
Rf	76
Rg	93
Rcs,h1(%)	-17

Special Color Rendering Indices			
R1	68	R9	-38
R2	85	R10	68
R3	93	R11	64
R4	67	R12	62
R5	70	R13	72
R6	82	R14	96
R7	73	R15	60
R8	39	--	--
--	--	--	--
--	--	--	--
--	--	--	--

Photometric Measurement – Goniophotometer Method:

Parameter	Result		DLC V5.1 Pass Criteria
Test Voltage (V)	120.0	277.0	--
Frequency (Hz)	60	60	
Total Luminous (lm)	3540.2	3461.6	250-5000(-10%)
Luminous Efficacy (lm/W)	120.50	119.41	Premium: >= 120(-3%)
Most worst Luminous/Highest	117.82		
Zonal lumens in the 0-90° (%)	99.6	--	>=100(-3)
Zonal lumens in the 80-90°(%)	0.5	--	<=10(+3)
Beam Angle (°)	106.9	--	--
Center Beam Candle Power (cd)	1571	--	--

Laboratory: Belling Test Laboratory Co., LTD A2LA Certificate# 4810.01
 Unit 401, No. 309 Xinxin Seven Road, Zengcheng District,
 Guangzhou, People's Republic of China. engineer@etk-utest.com

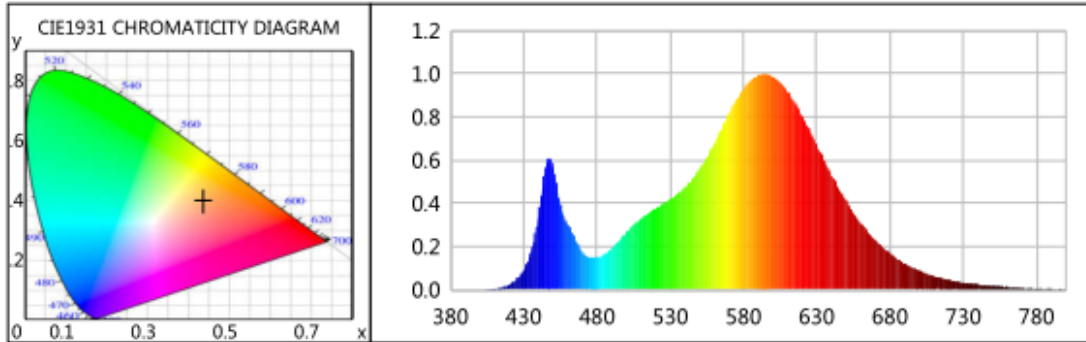
Report Format Number BL-FM-SA-012



Certificate#4810.01

Report No.:
BLC2102003E-B-CP

Spectral Power Distribution & Chromaticity Diagram



WL(nm)	PL	PE(mW/nm)	WL(nm)	PL	PE(mW/nm)	WL(nm)	PL	PE(mW/nm)
380	0.0000	0.0026	525	0.3971	30.9031	670	0.2291	17.8294
385	0.0004	0.0305	530	0.4182	32.5394	675	0.1956	15.2170
390	0.0005	0.0418	535	0.4435	34.5131	680	0.1675	13.0317
395	0.0003	0.0227	540	0.4724	36.7572	685	0.1424	11.0806
400	0.0007	0.0581	545	0.5100	39.6872	690	0.1213	9.4357
405	0.0021	0.1621	550	0.5561	43.2739	695	0.1029	8.0071
410	0.0038	0.2951	555	0.6109	47.5343	700	0.0869	6.7638
415	0.0102	0.7956	560	0.6739	52.4405	705	0.0745	5.7962
420	0.0231	1.7951	565	0.7421	57.7447	710	0.0629	4.8957
425	0.0467	3.6339	570	0.8099	63.0195	715	0.0531	4.1326
430	0.0914	7.1138	575	0.8747	68.0673	720	0.0452	3.5199
435	0.1732	13.4759	580	0.9304	72.4020	725	0.0382	2.9736
440	0.3399	26.4493	585	0.9701	75.4887	730	0.0327	2.5453
445	0.5643	43.9086	590	0.9936	77.3159	735	0.0272	2.1133
450	0.5680	44.2004	595	0.9993	77.7611	740	0.0235	1.8297
455	0.3910	30.4259	600	0.9884	76.9130	745	0.0200	1.5597
460	0.3009	23.4139	605	0.9611	74.7917	750	0.0160	1.2413
465	0.2383	18.5443	610	0.9208	71.6506	755	0.0151	1.1756
470	0.1743	13.5637	615	0.8674	67.4992	760	0.0132	1.0270
475	0.1493	11.6172	620	0.8054	62.6720	765	0.0098	0.7646
480	0.1504	11.7044	625	0.7377	57.4069	770	0.0095	0.7419
485	0.1629	12.6763	630	0.6688	52.0412	775	0.0069	0.5347
490	0.1904	14.8137	635	0.5985	46.5757	780	0.0061	0.4730
495	0.2261	17.5928	640	0.5324	41.4281	785	0.0027	0.2124
500	0.2642	20.5563	645	0.4694	36.5271	790	0.0061	0.4724
505	0.2985	23.2299	650	0.4116	32.0290	795	0.0036	0.2800
510	0.3290	25.5998	655	0.3568	27.7672	800	0.0018	0.1374
515	0.3546	27.5929	660	0.3094	24.0734			
520	0.3770	29.3350	665	0.2660	20.7001			

Laboratory: Belling Test Laboratory Co., LTD A2LA Certificate# 4810.01
 Unit 401, No. 309 Xinxin Seven Road, Zengcheng District,
 Guangzhou, People's Republic of China. engineer@etk-utest.com

Report Format Number BL-FM-SA-012



TM30

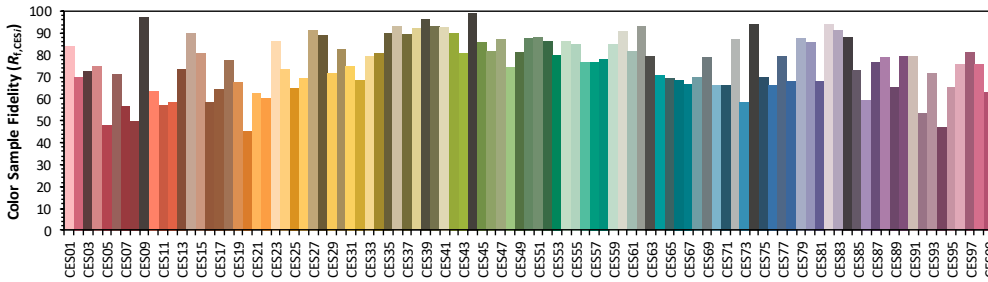
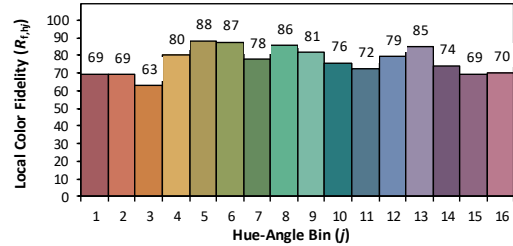
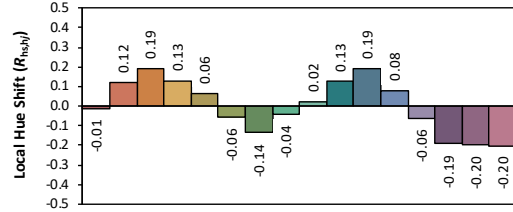
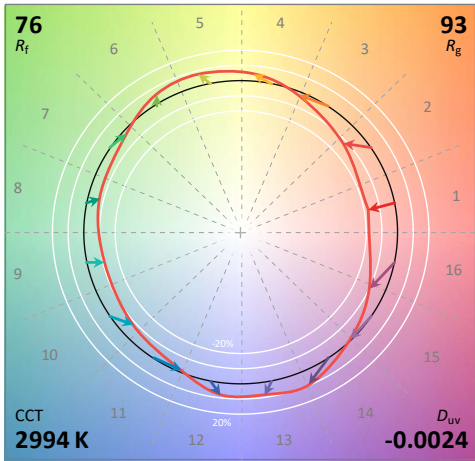
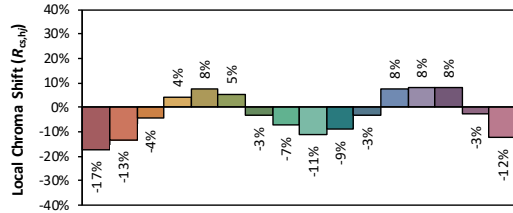
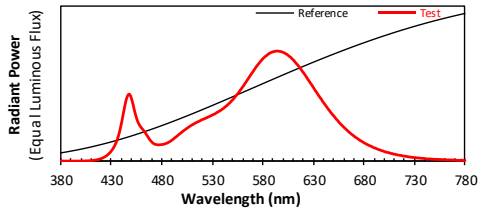
ANSI/IES TM-30-18 Color Rendition Report

Source: BXEM-30C-12H-6C

Date: 2021/2/2

Manufacturer: RAB LIGHTING INC.

Model: SLIM17FA30ADJ (Tested at 0% CCT Setting)



Notes: This is a recommended method for displaying ANSI/IES TM-30-18 information.

x 0.4339
 y 0.3970
 u' 0.2516
 v' 0.5181

CIE 13.3-1995 (CRI)
 R_a 72
 R_g -38

Colors are for visual orientation purposes only. Created with the ANSI/IES TM-30-18 Calculator Version 2.00.



Report No.:
BLC2102003E-B-CP

Zonal Lumen Tabulation

Zonal Lumen Summary

Zone	Lumens	% Lamp	% Luminaire
0-30	1,177.6	33.3%	33.3%
0-40	1,860.7	52.6%	52.6%
0-60	3,063.9	86.5%	86.6%
60-90	463.0	13.1%	13.1%
70-100	146.1	4.1%	4.1%
90-120	4.0	0.1%	0.1%
0-90	3,526.9	99.6%	99.6%
90-180	12.8	0.4%	0.4%
0-180	3,539.7	100%	100%

Lumens Per Zone

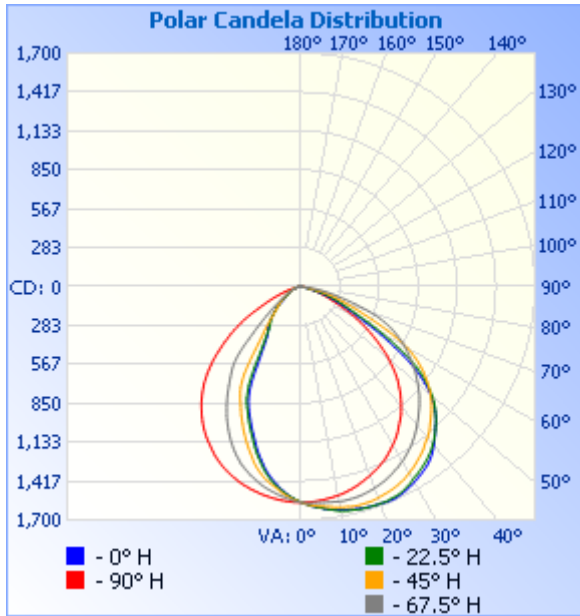
Zone	Lumens	% Total	Zone	Lumens	% Total
0-10	147.9	4.2%	90-100	1.6	0%
10-20	417.3	11.8%	100-110	1.1	0%
20-30	612.3	17.3%	110-120	1.3	0%
30-40	683.1	19.3%	120-130	1.6	0%
40-50	663.2	18.7%	130-140	1.9	0.1%
50-60	540.0	15.3%	140-150	2.0	0.1%
60-70	318.5	9.0%	150-160	1.8	0%
70-80	125.3	3.5%	160-170	1.2	0%
80-90	19.2	0.5%	170-180	0.4	0%



Certificate#4810.01

Report No.:
BLC2102003E-B-CP

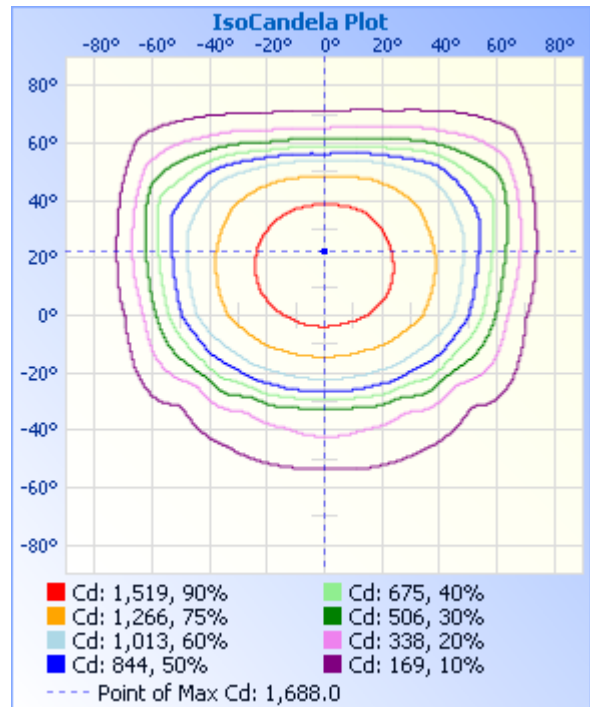
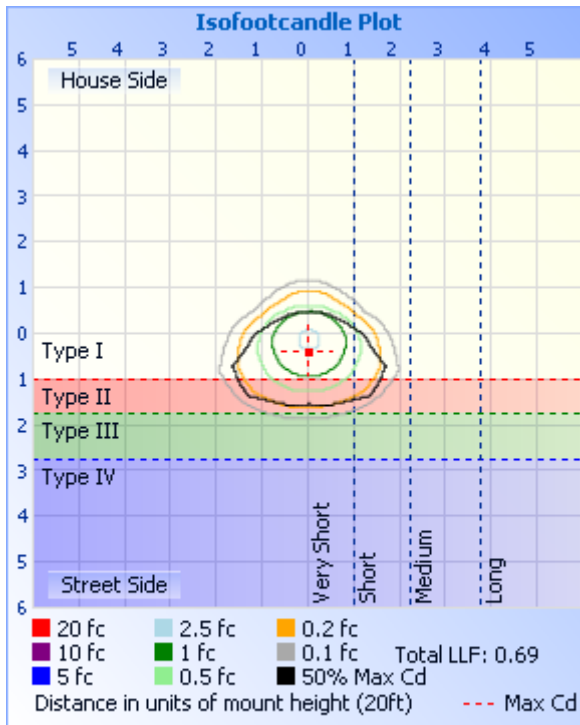
Photometric Data



Illuminance at a Distance

	Center Beam fc	Beam Width	
17.0ft	5.44 fc	30.0 ft	45.8 ft
34.0ft	1.36 fc	59.9 ft	91.7 ft
51.0ft	0.60 fc	89.9 ft	137.5 ft
68.0ft	0.34 fc	119.9 ft	183.3 ft
85.0ft	0.22 fc	149.8 ft	229.1 ft
102.0ft	0.15 fc	179.8 ft	275.0 ft

■ Vert. Spread: 82.8°
■ Horiz. Spread: 106.9°



Laboratory: Belling Test Laboratory Co., LTD A2LA Certificate# 4810.01
 Unit 401, No. 309 Xinxin Seven Road, Zengcheng District,
 Guangzhou, People's Republic of China. engineer@etk-utest.com

Report Format Number BL-FM-SA-012



Certificate#4810.01

Report No.:
BLC2102003E-B-CP

Candela Table - Type C

	0	22.5	45	67.5	90	112.5	135	157.5	180	202.5	225	247.5	270	292.5	315	337.5	360
0	1571	1571	1571	1571	1571	1571	1571	1571	1571	1571	1571	1571	1571	1571	1571	1571	1571
1	1581	1581	1581	1575	1572	1565	1564	1560	1560	1557	1562	1566	1571	1574	1578	1581	1581
2	1592	1590	1589	1578	1571	1559	1555	1545	1546	1545	1551	1561	1570	1577	1585	1592	1592
3	1601	1600	1595	1578	1568	1554	1544	1532	1531	1531	1538	1552	1568	1579	1593	1600	1601
4	1610	1608	1601	1579	1566	1546	1531	1516	1513	1516	1525	1544	1566	1580	1599	1609	1610
5	1617	1616	1607	1581	1563	1539	1518	1499	1493	1499	1512	1535	1563	1581	1604	1617	1617
6	1627	1625	1610	1582	1561	1532	1504	1480	1474	1480	1495	1526	1561	1582	1609	1624	1627
7	1634	1633	1615	1583	1556	1523	1487	1461	1451	1462	1479	1516	1556	1583	1611	1630	1634
8	1641	1642	1621	1584	1552	1514	1471	1443	1430	1443	1464	1507	1552	1584	1616	1636	1641
9	1646	1651	1626	1586	1548	1505	1454	1422	1406	1422	1449	1497	1547	1584	1618	1643	1646
10	1650	1658	1632	1589	1544	1494	1437	1400	1382	1398	1433	1488	1543	1585	1623	1651	1650
11	1654	1663	1636	1590	1539	1479	1417	1375	1355	1373	1415	1476	1538	1584	1626	1656	1654
12	1659	1668	1639	1589	1533	1466	1398	1348	1325	1341	1395	1463	1531	1581	1628	1660	1659
13	1664	1670	1644	1588	1525	1452	1377	1319	1293	1312	1373	1449	1525	1578	1634	1664	1664
14	1668	1673	1645	1587	1518	1437	1352	1289	1263	1282	1350	1435	1518	1574	1634	1668	1668
15	1672	1676	1646	1584	1510	1424	1333	1259	1230	1252	1325	1420	1511	1571	1634	1670	1672
16	1675	1678	1646	1581	1502	1409	1305	1229	1195	1220	1293	1406	1504	1567	1635	1673	1675
17	1678	1680	1645	1577	1492	1391	1278	1194	1160	1183	1264	1390	1496	1562	1634	1672	1678
18	1680	1679	1644	1572	1484	1374	1250	1159	1127	1149	1237	1374	1487	1558	1631	1672	1680
19	1681	1682	1641	1567	1473	1357	1223	1122	1095	1119	1209	1356	1478	1554	1627	1672	1681
20	1683	1682	1636	1561	1463	1339	1193	1090	1064	1089	1180	1335	1467	1552	1624	1671	1683
21	1684	1682	1632	1554	1452	1320	1162	1058	1033	1058	1150	1314	1456	1546	1619	1671	1684
22	1688	1681	1628	1547	1442	1300	1130	1027	1003	1027	1122	1292	1445	1541	1613	1670	1688
23	1688	1677	1624	1540	1432	1276	1097	995	973	994	1089	1269	1434	1533	1609	1668	1688
24	1686	1676	1619	1532	1419	1254	1066	967	938	966	1060	1245	1422	1522	1604	1664	1686
25	1682	1672	1613	1523	1408	1231	1037	937	903	937	1033	1219	1409	1513	1598	1660	1682
26	1677	1666	1606	1512	1394	1207	1004	905	861	904	1000	1193	1394	1505	1590	1655	1677
27	1669	1657	1599	1502	1379	1176	973	864	809	857	970	1166	1380	1496	1581	1648	1669
28	1662	1647	1590	1493	1364	1149	942	819	739	811	941	1139	1362	1486	1571	1641	1662
29	1653	1637	1580	1480	1349	1121	912	755	662	746	913	1111	1346	1475	1562	1633	1653

Laboratory: Belling Test Laboratory Co., LTD A2LA Certificate# 4810.01
Unit 401, No. 309 Xinxin Seven Road, Zengcheng District,
Guangzhou, People's Republic of China. engineer@etk-utest.com

Report Format Number BL-FM-SA-012



Report No.:
BLC2102003E-B-CP

Certificate#4810.01

30	1645	1623	1569	1469	1332	1091	882	676	599	677	885	1084	1330	1463	1551	1627	1645
31	1636	1612	1557	1458	1315	1062	848	610	551	612	854	1051	1313	1448	1541	1618	1636
32	1624	1602	1546	1443	1298	1031	809	559	509	555	810	1022	1296	1433	1529	1604	1624
33	1615	1591	1533	1430	1281	998	761	514	476	511	760	991	1278	1419	1516	1594	1615
34	1605	1580	1519	1416	1259	967	697	477	447	473	697	959	1260	1404	1505	1586	1605
35	1593	1568	1506	1400	1239	934	626	444	425	443	630	928	1240	1391	1493	1569	1593
36	1580	1555	1493	1384	1220	902	559	415	409	416	568	894	1218	1377	1480	1556	1580
37	1564	1540	1478	1368	1200	870	509	391	398	391	515	864	1196	1362	1467	1543	1564
38	1546	1526	1460	1350	1180	834	468	373	388	374	472	835	1175	1345	1453	1528	1546
39	1524	1509	1443	1331	1156	803	431	358	379	360	436	806	1151	1328	1438	1513	1524
40	1502	1491	1431	1311	1132	775	400	345	370	348	404	778	1128	1309	1423	1495	1502
41	1479	1473	1414	1292	1107	746	373	333	351	339	376	747	1104	1290	1407	1477	1479
42	1454	1453	1396	1273	1082	709	345	323	333	331	349	705	1079	1273	1390	1459	1454
43	1430	1431	1373	1254	1057	657	322	316	320	322	323	657	1054	1252	1368	1440	1430
44	1408	1408	1354	1236	1028	595	301	301	305	304	302	601	1025	1232	1350	1417	1408
45	1388	1386	1335	1218	1000	534	283	277	288	286	284	535	999	1212	1332	1394	1388
46	1362	1359	1316	1196	973	486	265	260	276	273	268	483	967	1190	1314	1370	1362
47	1333	1336	1296	1177	943	441	250	246	262	258	253	438	935	1167	1296	1349	1333
48	1304	1308	1275	1154	911	396	236	231	249	244	239	397	903	1145	1277	1322	1304
49	1268	1279	1253	1130	873	358	224	221	236	233	228	361	869	1123	1255	1291	1268
50	1232	1246	1228	1108	842	325	212	209	224	220	218	327	835	1103	1232	1261	1232
51	1189	1210	1203	1087	807	294	202	197	206	207	209	298	801	1082	1208	1228	1189
52	1142	1169	1175	1062	771	266	192	186	186	195	199	272	761	1059	1184	1193	1142
53	1090	1128	1149	1041	730	242	183	177	169	186	190	249	726	1036	1161	1155	1090
54	1032	1079	1117	1016	692	221	174	168	154	175	183	228	688	1011	1132	1110	1032
55	969	1029	1086	990	655	201	164	157	143	161	174	207	652	984	1105	1064	969
56	894	969	1052	967	617	184	156	144	135	146	162	189	618	964	1076	1010	894
57	814	897	1018	942	576	167	148	133	130	135	150	174	581	935	1043	951	814
58	745	821	978	917	538	152	137	124	126	125	140	160	543	910	1008	877	745
59	674	753	936	892	502	141	127	115	122	118	133	147	508	883	972	805	674
60	606	683	892	869	468	129	119	109	117	112	126	134	473	859	935	738	606
61	533	614	833	844	432	119	112	103	108	107	119	124	430	836	893	666	533

Laboratory: Belling Test Laboratory Co., LTD A2LA Certificate# 4810.01
Unit 401, No. 309 Xinxin Seven Road, Zengcheng District,
Guangzhou, People' s Republic of China. engineer@etk-utest.com

Report Format Number BL-FM-SA-012



Report No.:
BLC2102003E-B-CP

Certificate#4810.01

62	481	545	775	817	384	109	107	99	98	103	114	116	386	810	844	599	481
63	431	485	704	786	345	101	102	96	92	100	108	107	346	785	783	533	431
64	390	434	639	757	311	94	96	93	87	98	103	99	313	760	721	477	390
65	354	392	571	725	281	87	92	89	83	93	96	92	285	732	655	430	354
66	324	354	511	694	254	80	86	84	79	84	91	87	257	704	593	387	324
67	293	322	462	656	228	75	82	78	76	78	86	81	233	671	532	353	293
68	267	292	413	619	205	70	76	73	73	74	81	76	208	642	475	319	267
69	242	264	371	572	185	66	73	68	70	69	76	71	187	608	427	289	242
70	214	238	331	520	167	62	68	64	67	66	72	66	168	571	386	262	214
71	188	212	296	465	148	57	64	61	63	63	69	62	150	527	347	237	188
72	151	188	265	412	133	53	60	57	60	60	64	58	133	482	309	212	151
73	118	152	234	367	118	49	56	54	57	56	60	54	118	431	277	184	118
74	98	117	207	326	104	45	53	51	54	53	56	50	102	380	243	138	98
75	73	90	180	286	90	42	49	48	50	50	52	46	89	337	214	116	73
76	61	71	153	251	77	38	46	44	46	46	48	43	76	294	187	84	61
77	51	60	110	220	66	34	42	40	43	43	45	39	66	259	162	71	51
78	42	51	83	189	56	31	37	37	39	39	41	36	58	228	130	60	42
79	21	39	63	161	47	28	34	34	36	36	37	32	50	196	89	49	21
80	5	14	50	133	39	24	30	30	33	32	33	29	43	167	64	33	5
81	3	5	39	109	32	21	27	27	30	29	30	26	37	141	51	8	3
82	3	3	17	86	26	18	24	24	26	26	27	22	31	116	41	4	3
83	2	3	9	54	19	15	20	21	23	23	24	20	26	94	25	3	2
84	2	3	7	37	13	12	17	18	20	20	21	17	21	72	9	3	2
85	2	2	5	26	9	10	14	15	17	17	17	14	16	43	7	3	2
86	2	2	4	13	6	7	11	13	14	14	15	12	12	28	5	3	2
87	2	2	3	7	4	6	9	10	12	12	12	10	8	17	4	3	2
88	2	2	2	4	2	4	7	8	10	9	10	6	6	8	3	2	2
89	2	2	2	3	0	2	5	5	7	7	7	5	4	4	2	2	2
90	2	2	2	2	0	1	3	5	5	5	5	4	2	2	2	2	2
91	2	2	2	2	0	0	2	4	4	4	4	3	0	1	2	1	2
92	2	2	2	2	0	0	2	3	3	3	2	2	0	1	2	2	2
93	1	1	2	2	0	0	2	2	2	3	2	2	0	1	1	2	1

Laboratory: Belling Test Laboratory Co., LTD A2LA Certificate# 4810.01
Unit 401, No. 309 Xinxin Seven Road, Zengcheng District,
Guangzhou, People' s Republic of China. engineer@etk-utest.com

Report Format Number BL-FM-SA-012



Report No.:
BLC2102003E-B-CP

Certificate#4810.01

94	1	1	2	2	0	1	1	2	2	3	2	2	0	1	2	1	1
95	2	1	2	2	0	0	1	2	2	2	2	2	0	1	1	1	2
96	1	2	2	2	0	0	1	2	2	2	2	2	0	0	2	2	1
97	1	2	2	1	0	1	1	2	2	2	2	1	0	1	1	2	1
98	1	1	1	2	0	0	2	2	1	1	1	2	0	1	1	1	1
99	1	1	2	2	0	0	0	1	1	2	1	2	0	1	1	1	1
100	1	1	1	2	0	1	1	1	1	1	1	2	0	1	1	1	1
101	1	1	1	2	0	0	1	1	1	1	2	2	0	1	1	1	1
102	1	2	1	1	0	1	1	1	1	1	2	1	0	1	1	1	1
103	1	1	2	1	0	1	1	1	1	1	1	2	0	0	1	1	1
104	1	1	1	2	0	1	1	1	1	1	2	2	0	0	1	2	1
105	1	1	1	2	0	1	1	1	1	1	2	2	0	0	1	1	1
106	1	1	1	1	0	0	2	2	2	1	2	2	0	1	1	1	1
107	1	1	1	1	0	0	2	2	1	1	2	2	0	0	1	1	1
108	1	1	1	2	0	0	1	2	1	1	2	2	0	0	1	0	1
109	1	1	2	2	0	1	1	2	1	2	2	2	0	0	1	1	1
110	1	1	1	1	0	1	1	2	2	1	2	2	0	0	1	1	1
111	1	1	1	1	0	1	2	2	2	2	2	2	0	0	1	1	1
112	1	1	1	2	0	1	2	2	1	1	2	2	0	0	1	1	1
113	1	1	1	2	0	1	2	2	2	1	2	2	0	0	1	1	1
114	1	1	1	2	0	1	2	2	2	2	2	2	0	0	1	1	1
115	1	2	2	2	0	1	2	2	2	2	2	2	0	0	1	1	1
116	1	1	1	1	0	1	2	2	2	2	2	3	0	1	1	1	1
117	1	1	2	1	0	1	2	2	1	2	2	3	1	0	1	0	1
118	1	1	1	1	0	1	2	2	2	2	2	3	0	1	1	1	1
119	1	1	2	2	0	2	2	3	2	2	3	3	0	0	1	1	1
120	1	1	1	2	0	1	2	3	2	2	2	2	0	1	1	1	1
121	1	2	2	2	0	1	2	3	2	2	3	3	0	1	1	1	1
122	1	2	2	2	0	1	3	3	3	3	3	3	0	0	1	1	1
123	1	2	2	2	0	1	2	3	2	3	3	3	0	1	1	2	1
124	1	2	2	2	0	2	3	3	2	3	3	3	0	1	1	1	1
125	1	2	2	2	0	1	2	3	3	3	3	3	1	1	1	1	1

Laboratory: Belling Test Laboratory Co., LTD A2LA Certificate# 4810.01
Unit 401, No. 309 Xinxin Seven Road, Zengcheng District,
Guangzhou, People' s Republic of China. engineer@etk-utest.com

Report Format Number BL-FM-SA-012



Report No.:
BLC2102003E-B-CP

Certificate#4810.01

126	1	2	2	2	0	1	3	3	3	2	3	3	1	1	1	1	1
127	1	2	2	2	0	2	3	3	3	3	3	3	0	1	1	1	1
128	2	2	2	2	0	2	2	3	3	3	3	3	1	1	1	1	2
129	1	2	1	3	0	2	2	3	3	3	3	3	1	1	1	1	1
130	1	1	2	2	1	2	3	3	3	3	4	3	1	1	1	1	1
131	1	2	2	3	0	2	3	3	3	4	3	4	1	1	1	2	1
132	2	2	2	3	0	2	3	4	3	4	4	4	1	1	1	2	2
133	1	2	2	3	1	1	3	3	3	4	4	4	1	2	2	1	1
134	1	2	2	3	1	2	3	4	3	4	4	3	1	2	2	2	1
135	1	1	2	3	0	2	3	4	3	4	4	4	1	2	1	1	1
136	1	2	2	3	1	2	3	4	3	4	4	4	1	2	2	1	1
137	2	2	2	3	1	3	3	4	4	4	4	3	1	2	2	1	2
138	2	2	2	3	1	3	3	4	4	4	4	4	1	2	2	1	2
139	2	2	3	4	1	2	4	4	4	3	3	4	2	2	2	2	2
140	2	2	3	4	2	3	3	4	4	4	4	4	2	2	1	2	2
141	2	2	3	4	1	3	3	4	4	4	4	4	2	2	2	2	2
142	2	3	3	3	1	3	4	4	4	4	4	4	2	2	2	2	2
143	2	2	3	3	2	3	4	4	4	4	4	4	2	2	2	2	2
144	2	2	3	4	2	3	4	4	4	4	4	3	2	2	2	2	2
145	2	3	3	4	2	3	4	4	4	4	5	5	2	3	2	2	2
146	2	3	3	4	2	3	4	5	3	3	5	5	2	2	3	3	2
147	2	3	4	4	2	3	4	4	4	3	5	4	2	3	3	2	2
148	2	3	4	3	2	3	4	4	5	5	5	5	2	3	3	3	2
149	2	4	4	4	2	4	4	5	4	4	5	4	2	3	3	2	2
150	2	3	4	4	2	3	4	5	4	4	5	5	3	3	3	3	2
151	2	4	4	4	2	3	4	4	5	5	5	5	2	3	4	3	2
152	3	4	4	5	2	4	4	5	5	5	4	5	3	3	3	3	3
153	3	4	4	4	2	3	4	5	4	4	5	5	2	3	3	2	3
154	3	4	4	4	2	3	4	5	4	4	5	5	3	3	3	3	3
155	3	3	4	4	3	4	4	5	5	5	5	5	3	3	4	3	3
156	4	4	4	5	3	3	4	5	5	5	5	4	2	2	3	3	4
157	3	5	4	5	2	3	4	5	5	5	3	5	3	3	3	4	3

Laboratory: Belling Test Laboratory Co., LTD A2LA Certificate# 4810.01
Unit 401, No. 309 Xinxin Seven Road, Zengcheng District,
Guangzhou, People' s Republic of China. engineer@etk-utest.com

Report Format Number BL-FM-SA-012



Report No.:
BLC2102003E-B-CP

Certificate#4810.01

158	3	5	4	5	3	4	4	5	5	5	5	5	3	3	3	3	3
159	4	4	4	4	2	4	4	4	5	5	5	4	3	3	4	3	4
160	3	5	4	4	3	3	5	5	5	5	5	5	3	3	3	4	3
161	3	5	4	5	3	4	4	5	5	5	5	5	3	3	4	3	3
162	4	4	4	5	3	4	5	5	5	5	5	5	1	3	4	4	4
163	4	5	4	5	3	4	5	5	5	5	5	5	3	3	4	4	4
164	4	4	5	5	2	4	5	5	5	4	6	5	2	4	4	4	4
165	4	4	5	5	3	4	5	5	5	4	5	4	3	3	4	4	4
166	4	5	5	5	4	4	5	4	5	5	5	5	3	4	4	4	4
167	5	5	4	5	3	3	4	5	4	5	5	5	4	3	4	4	5
168	4	5	5	5	3	4	4	5	5	5	5	5	3	4	4	4	4
169	5	5	5	5	4	3	4	4	5	5	6	5	4	4	4	4	5
170	4	5	5	5	3	3	5	5	5	5	4	5	3	4	4	4	4
171	4	5	5	5	3	4	5	5	5	5	6	6	3	4	4	5	4
172	5	5	5	5	3	3	4	5	5	5	5	5	3	4	4	4	5
173	5	5	5	4	3	4	4	5	5	5	6	5	3	4	4	4	5
174	5	4	4	5	3	4	4	5	5	5	5	5	4	4	4	4	5
175	4	5	5	3	3	4	4	5	4	5	4	5	4	4	4	4	4
176	4	5	5	5	3	4	5	5	5	4	4	5	3	4	4	5	4
177	5	5	4	4	3	4	4	5	5	5	4	5	3	4	5	4	5
178	5	4	5	5	4	4	5	5	5	5	5	5	4	5	4	5	5
179	4	5	5	5	3	4	4	4	5	5	4	5	4	4	2	5	4
180	5	5	5	4	3	4	5	5	5	5	5	5	4	5	5	5	5



Report No.:
BLC2102003E-B-CP

BUG

Lum. Classification System (LCS)

<u>LCS Zone</u>	<u>Lumens</u>	<u>%Lamp</u>	<u>%Lum</u>
FL (0-30)	670.8	18.9	18.9
FM (30-60)	1388.8	39.2	39.2
FH (60-80)	357.8	10.1	10.1
FVH (80-90)	10.7	0.3	0.3
BL (0-30)	506.8	14.3	14.3
BM (30-60)	497.9	14.1	14.1
BH (60-80)	85.9	2.4	2.4
BVH(80-90)	8.6	0.2	0.2
UL (90-100)	1.6	0.0	0.0
UH (100-180)	11.2	0.3	0.3
Total	3540.1	99.8	100.0
BUG Rating	B2-U2-G1		



Certificate#4810.01

Report No.:
BLC2102003E-B-CP**2.2 Electrical, Photometric and Chromaticity Measurements***(Refer to Work Instruction BL-QP-033)*

Test date	2021-02-02	Test Ambient:	25.2 °C
Test Orientation	As intended	Stabilization Time (min)	90
Model Number	SLIM17FA30ADJ(Tested at 50% CCT Setting)		

Electrical Measurement:

Sample No.	Voltage (Vac)	Frequency (Hz)	Current (A)	Power (W)	Power Factor	THD %	
BLC210200	120.0	60	0.239	28.44	0.992	7.30	
3E-B1	277.0	60	0.110	28.11	0.919	15.72	
DLC Pass Criteria						>= 0.9(-3%)	<= 20(+5)

Chromaticity Measurement - Sphere-Spectroradiometer Method:

Parameter	Result	Special Color Rendering Indices			
Test Voltage (V)	120.0	R1	68	R9	-39
Frequency (Hz)	60	R2	80	R10	53
CCT (K)	3920	R3	90	R11	68
Duv	0.0020	R4	71	R12	47
Chromaticity (x, y)	x=0.3855 y=0.3843	R5	69	R13	70
Chromaticity (u', v')	u(u')=0.2255 v'(v')=0.5056	R6	72	R14	94
Color Rendering Index (CRI)	72	R7	79	R15	60
R9	-39	R8	48	--	--
Rf	75	--	--	--	--
Rg	94	--	--	--	--
Rcs,h1(%)	-18	--	--	--	--

Photometric Measurement –Sphere-Spectroradiometer Method:

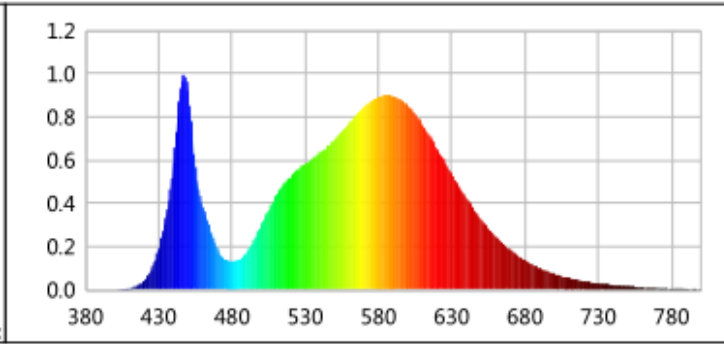
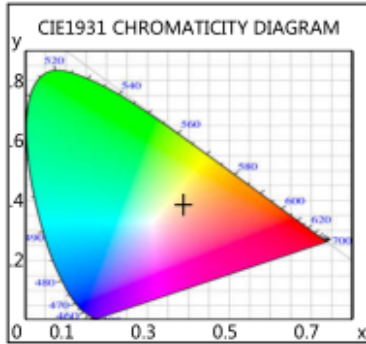
Parameter	Result		DLC V5.1 Pass Criteria
Test Voltage (V)	120.0	277.0	--
Frequency (Hz)	60	60	
Total Luminous (lm)	3813.0	3738.2	250-5000(-10%)
Luminous Efficacy (lm/W)	134.07	132.98	Premium: >= 120(-3%)
Most worst Luminous/Highest	131.44		



Certificate#4810.01

Report No.:
BLC2102003E-B-CP

Spectral Power Distribution & Chromaticity Diagram



WL(nm)	PL	PE(mW/nm)	WL(nm)	PL	PE(mW/nm)	WL(nm)	PL	PE(mW/nm)
380	0.0001	0.0043	525	0.5562	43.5806	670	0.1845	14.4523
385	0.0003	0.0264	530	0.5824	45.6341	675	0.1588	12.4393
390	0.0005	0.0370	535	0.6061	47.4854	680	0.1362	10.6705
395	0.0006	0.0449	540	0.6349	49.7473	685	0.1178	9.2334
400	0.0011	0.0852	545	0.6622	51.8831	690	0.1009	7.9065
405	0.0025	0.1995	550	0.6941	54.3806	695	0.0867	6.7939
410	0.0067	0.5238	555	0.7298	57.1846	700	0.0739	5.7890
415	0.0183	1.4305	560	0.7709	60.3991	705	0.0633	4.9582
420	0.0431	3.3791	565	0.8091	63.3939	710	0.0542	4.2433
425	0.0948	7.4246	570	0.8445	66.1647	715	0.0457	3.5795
430	0.1891	14.8180	575	0.8751	68.5625	720	0.0386	3.0268
435	0.3370	26.4059	580	0.8931	69.9729	725	0.0338	2.6484
440	0.5873	46.0132	585	0.9005	70.5541	730	0.0286	2.2422
445	0.9312	72.9578	590	0.8981	70.3669	735	0.0244	1.9112
450	0.9241	72.4036	595	0.8831	69.1932	740	0.0213	1.6684
455	0.5697	44.6399	600	0.8547	66.9672	745	0.0193	1.5114
460	0.3838	30.0720	605	0.8142	63.7925	750	0.0160	1.2540
465	0.2838	22.2350	610	0.7672	60.1150	755	0.0131	1.0228
470	0.1879	14.7200	615	0.7137	55.9170	760	0.0113	0.8883
475	0.1419	11.1145	620	0.6555	51.3577	765	0.0098	0.7647
480	0.1321	10.3466	625	0.5943	46.5635	770	0.0099	0.7795
485	0.1404	11.0021	630	0.5334	41.7925	775	0.0072	0.5604
490	0.1726	13.5225	635	0.4777	37.4307	780	0.0051	0.4027
495	0.2300	18.0174	640	0.4226	33.1118	785	0.0062	0.4850
500	0.2982	23.3664	645	0.3722	29.1636	790	0.0051	0.3967
505	0.3664	28.7049	650	0.3263	25.5631	795	0.0038	0.2991
510	0.4319	33.8409	655	0.2847	22.3030	800	0.0038	0.2979
515	0.4843	37.9464	660	0.2465	19.3158			
520	0.5233	41.0036	665	0.2131	16.6975			

Laboratory: Belling Test Laboratory Co., LTD A2LA Certificate# 4810.01
 Unit 401, No. 309 Xinxin Seven Road, Zengcheng District,
 Guangzhou, People's Republic of China. engineer@etk-utest.com

Report Format Number BL-FM-SA-012



TM30

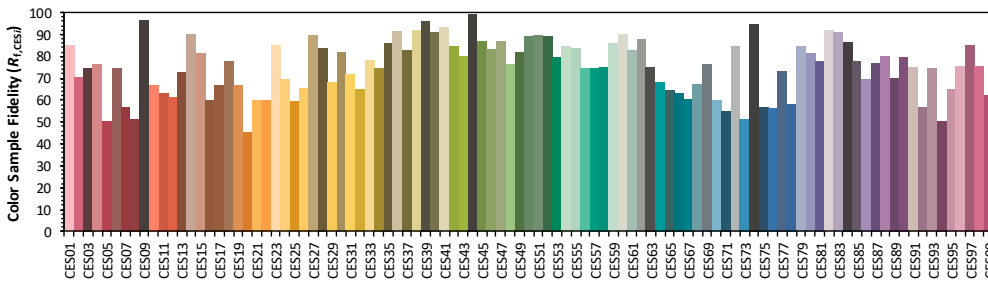
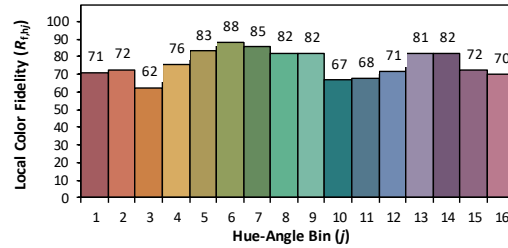
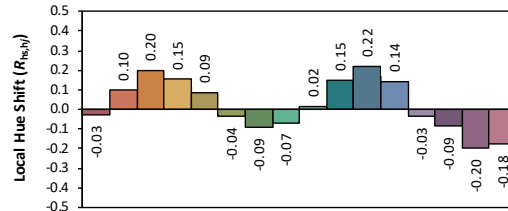
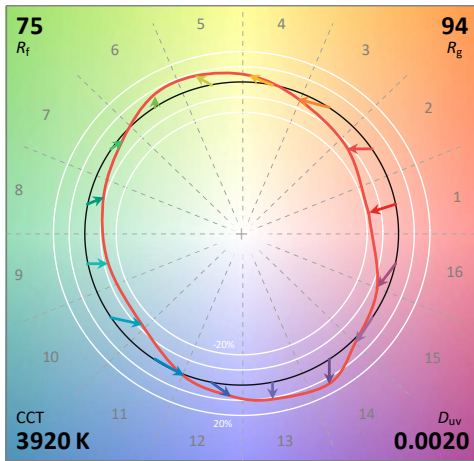
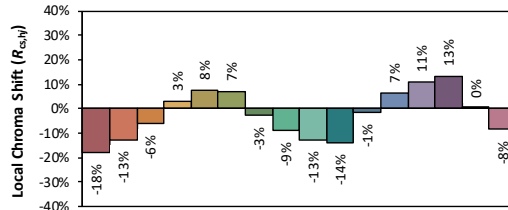
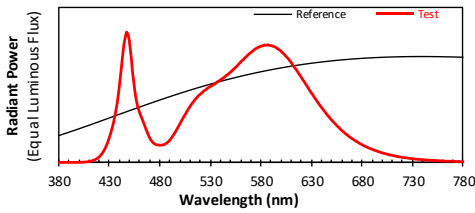
ANSI/IES TM-30-18 Color Rendition Report

Source: BXEM-30C-12H-6C

Manufacturer: RAB LIGHTING INC.

Date: 2021/2/2

Model: SLIM17FA30ADJ (Tested at 50% CCT Setting)



Notes: This is a recommended method for displaying ANSI/IES TM-30-18 information.

x 0.3855
y 0.3843
u' 0.2255
v' 0.5056

CIE 13.3-1995 (CRI)
Ra 72
R9 -39

Colors are for visual orientation purposes only. Created with the ANSI/IES TM-30-18 Calculator Version 2.00.



Certificate#4810.01

Report No.:
BLC2102003E-B-CP**2.3 Electrical, Photometric and Chromaticity Measurements***(Refer to Work Instruction BL-QP-033)*

Test date	2021-02-02	Test Ambient:	25.2 °C
Test Orientation	As intended	Stabilization Time (min)	90
Model Number	SLIM17FA30ADJ(Tested at 100% CCT Setting)		

Electrical Measurement:

Sample No.	Voltage (Vac)	Frequency (Hz)	Current (A)	Power (W)	Power Factor	THD %	
BLC210200	120.0	60	0.249	29.67	0.994	7.19	
3E-B1	277.0	60	0.114	29.13	0.919	15.35	
DLC Pass Criteria						>= 0.9(-3%)	<= 20(+5)

Chromaticity Measurement - Sphere-Spectroradiometer Method:

Parameter	Result	Special Color Rendering Indices			
Test Voltage (V)	120.0	R1	71	R9	-27
Frequency (Hz)	60	R2	79	R10	49
CCT (K)	4902	R3	84	R11	72
Duv	-0.0003	R4	74	R12	45
Chromaticity (x, y)	x=0.3478 y=0.3532	R5	72	R13	72
Chromaticity (u', v')	u(u')=0.2127 v'(v')=0.4858	R6	71	R14	91
Color Rendering Index (CRI)	74	R7	81	R15	66
R9	-27	R8	57	--	--
Rf	74	--	--	--	--
Rg	96	--	--	--	--
Rcs,h1(%)	-17	--	--	--	--

Photometric Measurement –Sphere-Spectroradiometer Method:

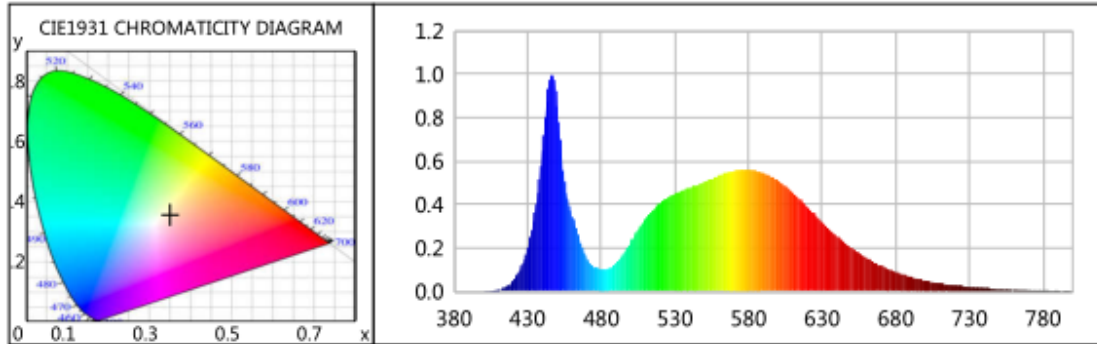
Parameter	Result		DLC V5.1 Pass Criteria
Test Voltage (V)	120.0	277.0	--
Frequency (Hz)	60	60	
Total Luminous (lm)	3767.9	3629.9	250-5000(-10%)
Luminous Efficacy (lm/W)	126.99	124.61	Premium: >= 120(-3%)
Most worst Luminous/Highest	122.34		



Certificate#4810.01

Report No.:
BLC2102003E-B-CP

Spectral Power Distribution & Chromaticity Diagram



WL(nm)	PL	PE(mW/nm)	WL(nm)	PL	PE(mW/nm)	WL(nm)	PL	PE(mW/nm)
380	0.0012	0.1343	525	0.4307	49.1431	670	0.1178	13.4428
385	0.0003	0.0354	530	0.4488	51.2050	675	0.1031	11.7661
390	0.0004	0.0407	535	0.4634	52.8785	680	0.0899	10.2560
395	0.0003	0.0360	540	0.4764	54.3559	685	0.0780	8.8965
400	0.0009	0.1072	545	0.4891	55.8061	690	0.0677	7.7221
405	0.0028	0.3169	550	0.5037	57.4770	695	0.0578	6.5944
410	0.0077	0.8750	555	0.5191	59.2329	700	0.0501	5.7178
415	0.0208	2.3788	560	0.5337	60.9014	705	0.0427	4.8697
420	0.0478	5.4549	565	0.5455	62.2413	710	0.0364	4.1491
425	0.1016	11.5922	570	0.5535	63.1631	715	0.0305	3.4769
430	0.1990	22.7035	575	0.5607	63.9769	720	0.0272	3.0985
435	0.3612	41.2144	580	0.5615	64.0667	725	0.0233	2.6595
440	0.6508	74.2632	585	0.5551	63.3452	730	0.0203	2.3112
445	0.9778	111.5692	590	0.5452	62.2081	735	0.0165	1.8837
450	0.8589	98.0048	595	0.5302	60.4989	740	0.0152	1.7337
455	0.5047	57.5886	600	0.5114	58.3565	745	0.0133	1.5140
460	0.3497	39.9009	605	0.4856	55.4097	750	0.0112	1.2770
465	0.2436	27.7922	610	0.4563	52.0682	755	0.0101	1.1549
470	0.1526	17.4086	615	0.4239	48.3676	760	0.0084	0.9627
475	0.1146	13.0775	620	0.3890	44.3828	765	0.0063	0.7194
480	0.1023	11.6757	625	0.3523	40.1973	770	0.0061	0.6913
485	0.1051	11.9963	630	0.3179	36.2710	775	0.0052	0.5910
490	0.1295	14.7783	635	0.2849	32.5087	780	0.0043	0.4904
495	0.1731	19.7525	640	0.2542	29.0002	785	0.0037	0.4183
500	0.2269	25.8912	645	0.2251	25.6827	790	0.0044	0.5023
505	0.2808	32.0461	650	0.2006	22.8854	795	0.0031	0.3564
510	0.3326	37.9554	655	0.1762	20.1105	800	0.0018	0.2039
515	0.3734	42.6021	660	0.1543	17.6073			
520	0.4064	46.3714	665	0.1354	15.4468			

Laboratory: Belling Test Laboratory Co., LTD A2LA Certificate# 4810.01
 Unit 401, No. 309 Xinxin Seven Road, Zengcheng District,
 Guangzhou, People's Republic of China. engineer@etk-utest.com

Report Format Number BL-FM-SA-012



TM30

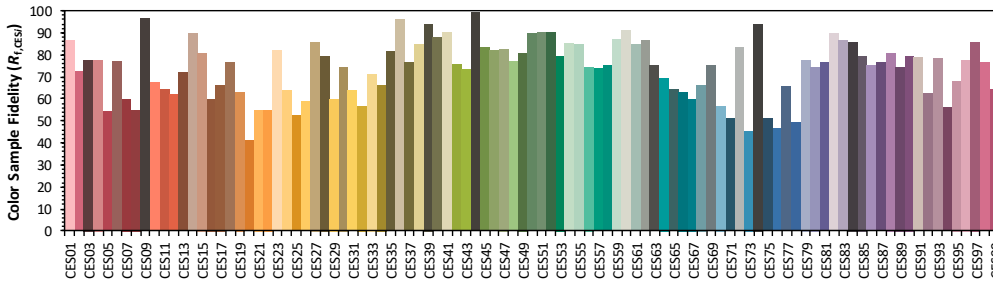
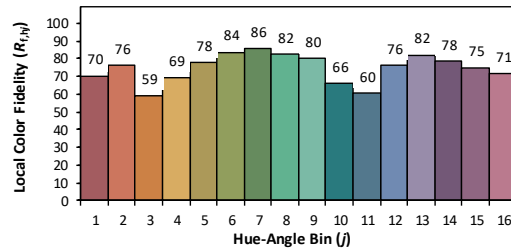
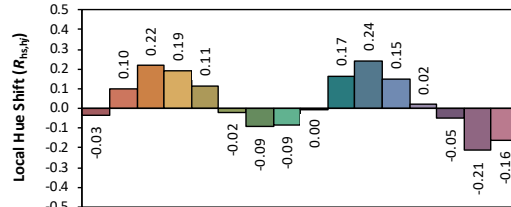
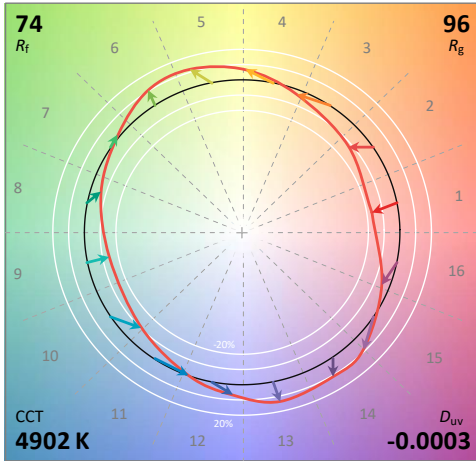
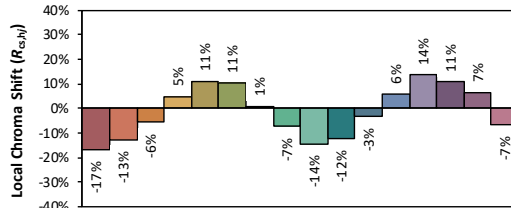
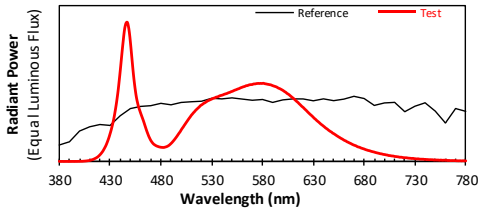
ANSI/IES TM-30-18 Color Rendition Report

Source: BXEM-30C-12H-6C

Manufacturer: RAB LIGHTING INC.

Date: 2021/2/2

Model: SLIM17FA30ADJ (Tested at 100% CCT Setting)



Notes: This is a recommended method for displaying ANSI/IES TM-30-18 information.

x 0.3478
y 0.3532
u' 0.2127
v' 0.4858

CIE 13.3-1995 (CRI)
Ra 74
R9 -27

Colors are for visual orientation purposes only. Created with the ANSI/IES TM-30-18 Calculator Version 2.00.



Certificate#4810.01

Report No.:
BLC2102003E-B-CP

3. Test Equipment

Equipment Name	Model No.	Serial No.	Next Calibration Date
Goniophotometric System	GPM-3000	DYHXF120001	2022-01-18
AC Power Source	CHP-500	DYBWD010159	2022-01-25
Total Luminous Flux Standard Lamp	24V/150W	DYJYR040040	2022-01-24
Digital Power Meter	WT500	DYDWQ20010	2022-01-25
Integral Sphere (2M)	2M	DYJCE120067	2022-01-18
Digital Power Meter	WT500	DYDWQ20006	2022-01-25
Optical Color and Electrical Measurement System	CMS-3000S	DYJCE120067	2022-01-18

Expand Uncertainty:
Photometric Measurement (Sphere): 2.08%, k=2
Chromaticity Measurement(Sphere):25.6K, k=2
Photometric Measurement(Goniophotometer):2.645%, k=2

***** END OF REPORT *****