

Photometric Test Report

Relevant Standards

- ☒ IES LM-79-2008
- ☒ ANSI C82.77:2017

Prepared For

RAB Lighting Inc.

Room 6A33, No.1388, Wuzhong road, Shanghai, China

Xiao Xiang, 15921313292, Gary.Xiao@rabweb.com

Prepared By

Deliver Co., Ltd.

Block 11, 78 Keling Road, SSTP, Suzhou, China

0512-66801950, kevin.jia@szdeliver.com

Project Number

DLF2211103

Report Number

DLF2211103-10a

Test Date

2022/11/16

Issue Date

2022/11/17

Prepared By



Wangzun Zhu

Approved By



Kevin Jia

The results contained in this report pertain only to the tested sample.

This report shall not be reproduced, except in full, without written approval of Deliver Co., Ltd.

This report must not be used by the client to claim product certification, approval, or endorsement by NVLAP.

1.0 Test Summary

DLC Technical Requirements v5.1

Indoor - Troffer - 2x4 Luminaires for Ambient Lighting of Interior Commercial Spaces				
Requirement Category	Test Method	Requirements		Test value
Luminaire Output (lm) (Goniophotometer - Section 4.2)	IES LM-79-2008	3000		2329
Minimum Luminaire Efficacy (lm/W) (Goniophotometer - Section 4.2)	IES LM-79-2008	Standard 110	Premium 125	129.4
Power (Input Wattage) (W) (Goniophotometer - Section 4.2)	IES LM-79-2008	Worst Case		18.0
Total Harmonic Distortion (A%) (THD & PF - section 4.3)	ANSI C82.77:2014	20.00%	120V	6.94%
		20.00%	277V	7.50%
Power Factor (THD & PF - section 4.3)	ANSI C82.77:2014	0.9	120V	0.993
		0.9	277V	0.917
Allowable CCTs* (K) (Integrating Sphere - Section 4.1)	IES LM-79-2008	7 step	3465±245	3450
		4 step	3465±124	
Minimum CRI (Integrating Sphere - Section 4.1)	IES LM-79-2008 CIE 13.3-1995	≥80		83
Minimum R9 (Integrating Sphere - Section 4.1)	IES LM-79-2008 CIE 13.3-1995	≥0		10
Minimum Rf (Integrating Sphere - Section 4.1)	ANSI/IES TM-30-18	≥70		85
Minimum Rg (Integrating Sphere - Section 4.1)	ANSI/IES TM-30-18	≥89		97
Minimum IES Rcs,h1 (Integrating Sphere - Section 4.1)	ANSI/IES TM-30-18	-12%≤IES Rcs,h1≤+23%		-12%
Zonal Lumen Requirement (0°-60°) (Goniophotometer - Section 4.2)	IES LM-79-2008	≥75%		76.48%
Corrected UGR (X=4H, Y=8H, 70/50/20%) (Goniophotometer - Section 4.2)	CIE 190-2010	<22		17.5
SC: 0-180° (Goniophotometer - Section 4.2)	IES LM-79-2008	1.0-2.0		1.34
SC: 90-270° (Goniophotometer - Section 4.2)	IES LM-79-2008	1.0-2.0		1.28
Input Voltage (V)				
(Goniophotometer - Section 4.2)	IES LM-79-2008	Worst Case		277
(Goniophotometer - Section 4.2)		Non-Worst Case		120
Input Current (A)				
(Goniophotometer - Section 4.2)	IES LM-79-2008	Worst Case		0.071
(Goniophotometer - Section 4.2)		Non-Worst Case		0.144
Power (Input Wattage - W)				
(Goniophotometer - Section 4.2)	IES LM-79-2008	Worst Case		18.0
(Goniophotometer - Section 4.2)		Non-Worst Case		17.1

2.0 Test List

Test Item	Test	Test Date	Model Number	Sample No.
1	Integrating Sphere Test	2022/11/16	T34FAHE2X4/17W/3500K	J1
2	Goniophotometer Test	2022/11/16	T34FAHE2X4/17W/3500K	J1
3	THD and PF Test	2022/11/16	T34FAHE2X4/17W/3500K	J1

Remark(If any)

- 1、 This report shall not be used by the client to claim product endorsement by NVLAP, NIST or any agency of the US government.
- 2、 The results reported herein have been performed in accordance with the laboratory's terms of accreditation. This report shall not be reproduced except in full without the written approval of the Laboratory. The results in this report apply to the test sample(s) mentioned above at the time of the testing period only and are not to be used to indicate applicability to other similar products. This report does not imply that the product(s) has met the criteria for certification.

3.0 Production Description

Luminaire Description: T34FAHE2X4/17W/3500K

Electrical Specification: 120V-277V,50/60HZ

Photos of Luminaire Characteristics



4.0 LM-79 Measurement and Test Results

4.1 Integrating Sphere Test

Model No.	T34FAHE2X4/17W/350 0K	Sample ID.	J1
Operate time (Min.)	90	Stabilization time (Min.)	45
Temperature (°C)	25.3	Humidity (%RH)	56.0

Test Method

The samples were tested according to the IES LM-79-2008.

Photometric parameters were measured using an integrating sphere, a spectroradiometer and software. The ambient temperature condition inside the sphere was maintained at $25^{\circ}\text{C} \pm 1^{\circ}\text{C}$.

The sample measurements were made using a spectroradiometer connected by a fiber optic cable and detector through the detector port of the integrating sphere.

The voltage of an AC power supply (RMS voltage) or DC power supply (instantaneous voltage) applied to the device under test shall be regulated to within ± 0.2 percent under load.

The sample was measured using 4π geometry and operated at rated voltage and was stabilized before measurement. Chromaticity coordinates, correlated color temperature and color rendering index were calculated from the spectral radiant flux measurements taken at 1 nm intervals over the range of 380 to 780 nm.

Test Result

Voltage (Vac)	Frequency (Hz)	Current (A)	Power (W)	Power Factor
119.99	60	0.140	16.7	0.993
276.95	60	0.069	17.6	0.917

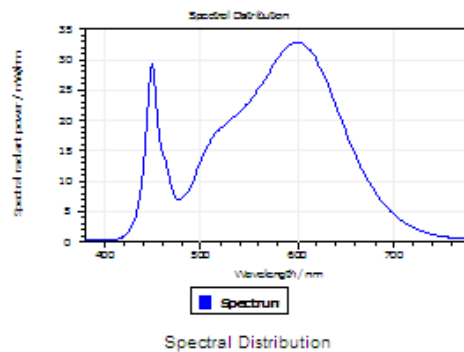
Test Result

CCT (K)	CRI	R9	Duv
3450	83	10	0.00012

Rf	Rg	IES Rcs,h1
85	97	-12%

4.1 Integrating Sphere Test

Results

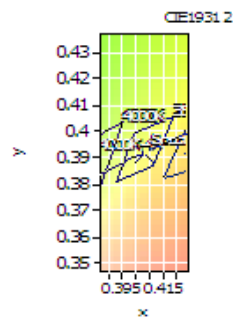


Spectral values

DominantWavelength 581.12 nm
Purity 0.400
PeakWavelength 589.65 nm
Radiant Power 5.309 W
Width50%:

Color Coordinates

Correlated Color Temperat 3450 K
x: 0.4080 u: 0.2370 u': 0.2370
y: 0.3918 v: 0.3414 v': 0.5121
CRI01 81.7 CRI09 10.1
CRI02 89.9 CRI10 76.7
CRI03 98.1 CRI11 82.3
CRI04 82.6 CRI12 66.8
CRI05 82.1 CRI13 83.6
CRI06 87.0 CRI14 98.1
CRI07 84.9 CRI15 74.9
CRI08 62.9 CRI16 72.8
ResultsCRI 83.4



PlankDistance 1.2E-004

4.1 Integrating Sphere Test

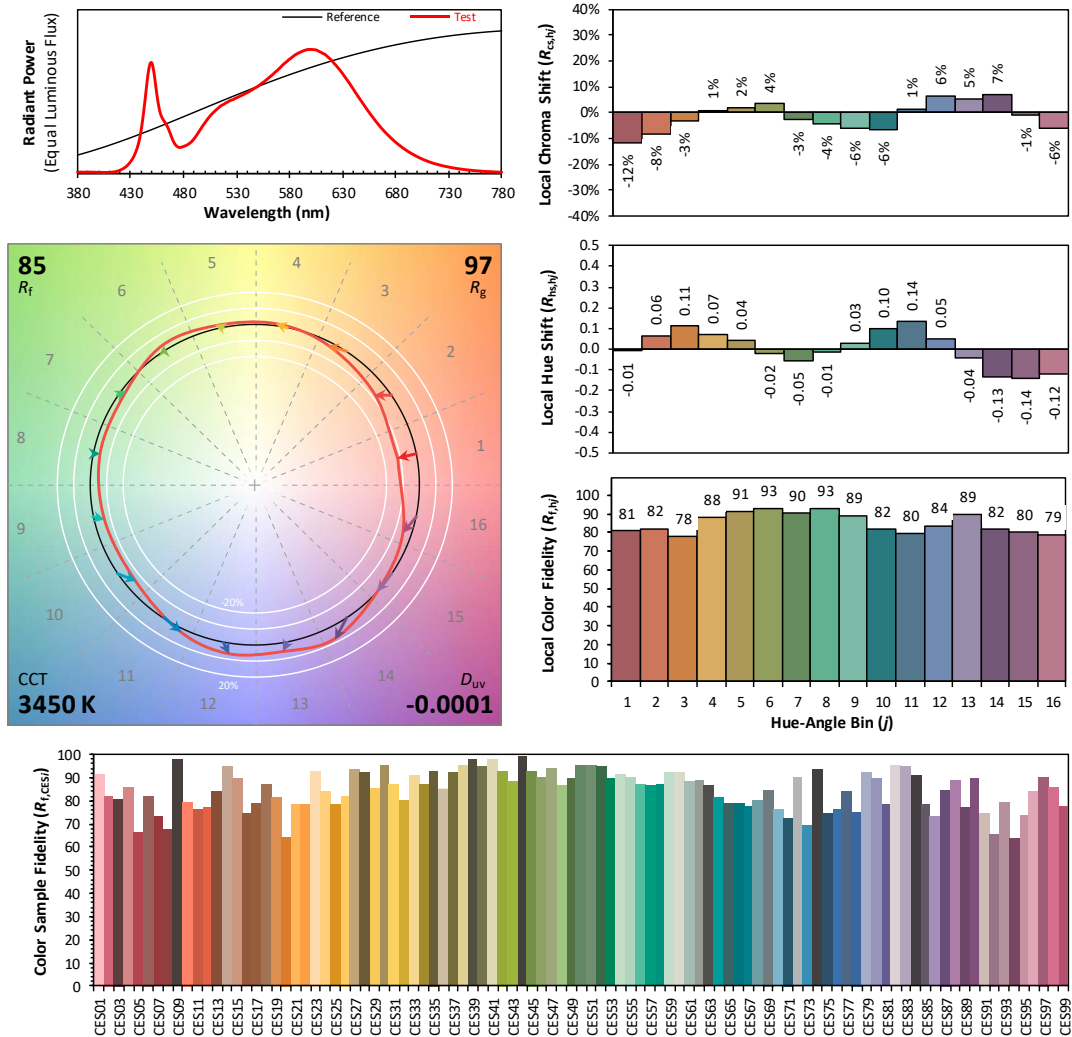
IES TM-30-18 Color Rendition Report

Source: DLF2211103-10a

Manufacturer: RAB Lighting Inc.

Date: 2022/11/16

Model: T34FAHE2X4/17W/3500K



Notes: This is a recommended method for displaying IES TM-30-18 information.

x 0.4080
 y 0.3918
 u' 0.2370
 v' 0.5121

CIE 13.3-1995
(CRI)

R_a 84
 R_g 14

4.0 LM-79 Measurement and Test Results

4.2 Goniophotometer Test

Model No.	T34FAHE2X4/17W/3 500K	Sample ID.	J1
Operate time (Min.)	90	Stabilization time (Min.)	45
Temperature (°C)	25.3	Humidity (%RH)	54.0

Test Method

The samples were tested according to the IES LM-79-2008.

Photometric parameters were measured using a type C goniophotometer and software.

The ambient temperature shall be maintained at $25^{\circ}\text{C} \pm 1^{\circ}\text{C}$, measured at a point not more than 1 m from the sample and at the same height as the sample.

The voltage of an AC power supply (RMS voltage) or DC power supply (instantaneous voltage) applied to the device under test shall be regulated to within ± 0.2 percent under load.

The samples were operated at rated voltage and was stabilized before measurement. Luminous flux, luminaire efficacy, zonal lumen were calculated from the software taken at 0.5° vertical intervals and 10° horizontal intervals.

Test Conditions

Condition	Voltage (Vac)	Frequency (Hz)	Current (A)	Power (W)	Power Factor
WROST CASE	277.06	60	0.071	18.0	0.911
NON-WROST CASE	120.01	60	0.144	17.1	0.987

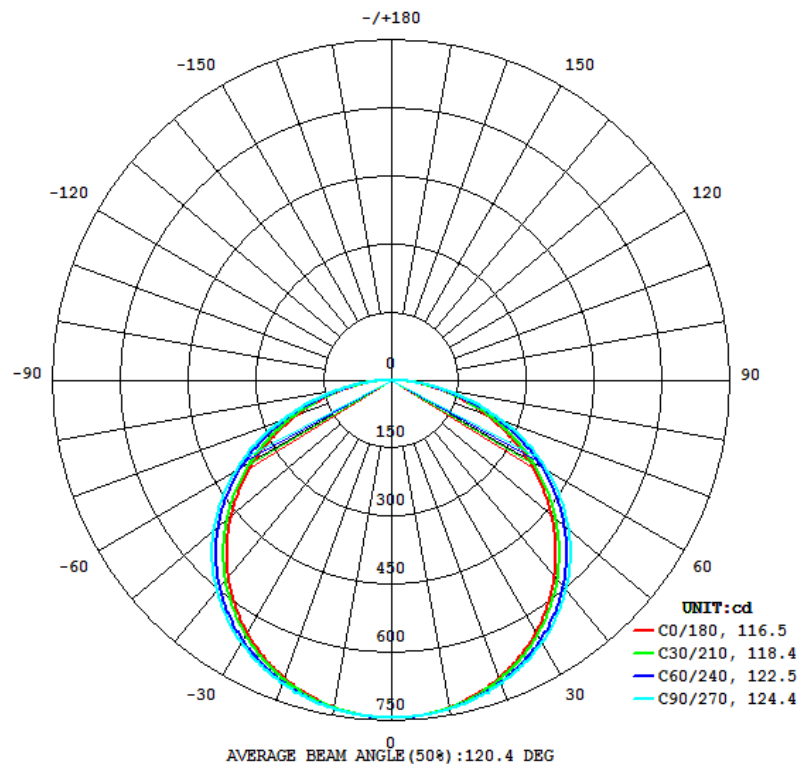
Test Result

Flux (lm)	Field Angle(10%)		Beam Angle(50%)		Luminous Efficacy (lm/W)
	C0-180	C90-270	C0-180	C90-270	
2329	164.7	166.0	116.5	124.4	129.4

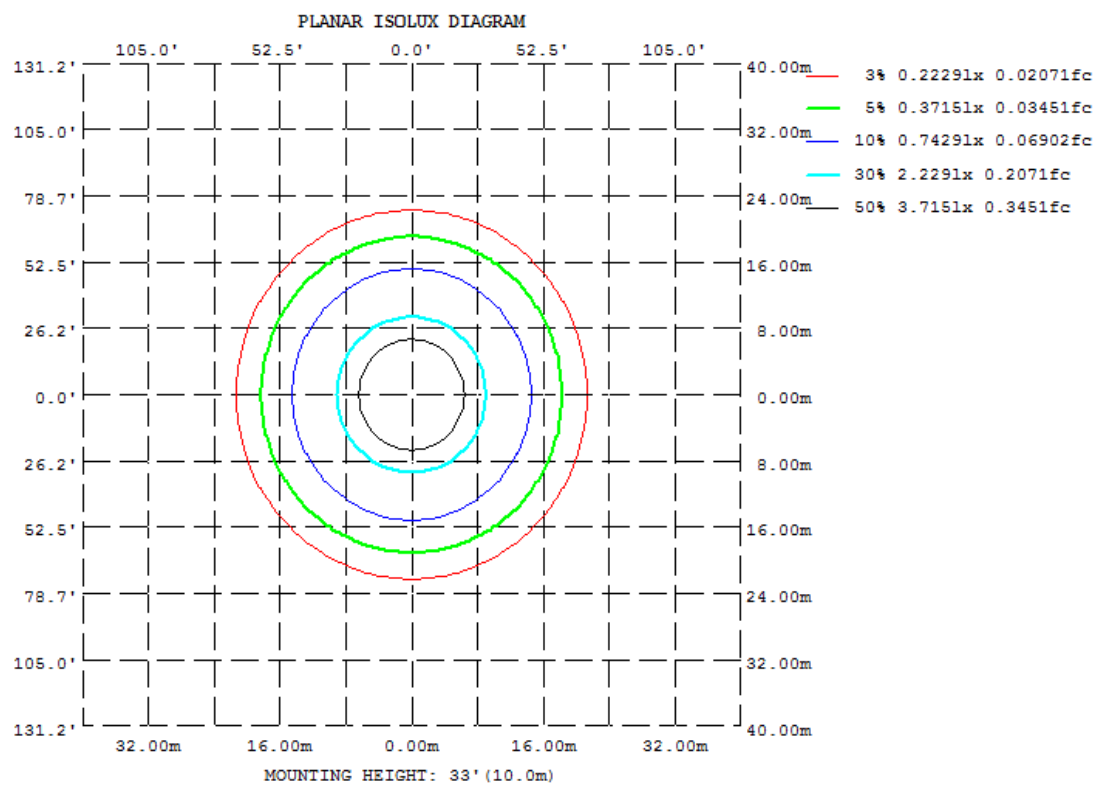
Zonal Lumen Requirement (0° - 60°)	UGR ($X=4H$, $Y=8H$, 70/50/20%)	SC: $0-180^{\circ}$	SC: $90-270^{\circ}$
76.48%	17.5	1.34	1.28

4.2 Goniophotometer Test

Light Distrubtion Curve



Isolux Plot



4.2 Goniophotometer Test

Zonal Lumen Summary

γ	C0	C45	C90	C135	C180	C225	C270	C315
10	732.0	733.6	734.6	733.6	732.0	733.6	734.6	733.6
20	697.5	704.1	709.9	704.1	697.5	704.1	709.9	704.1
30	640.8	654.2	666.7	654.2	640.8	654.2	666.7	654.2
40	562.9	582.7	602.8	582.7	562.9	582.7	602.8	582.7
50	465.1	489.5	514.4	489.5	465.1	489.5	514.4	489.5
60	350.4	374.4	400.2	374.4	350.4	374.4	400.2	374.4
70	225.1	243.4	262.6	243.4	225.1	243.4	262.6	243.4
80	101.5	109.8	115.4	109.8	101.5	109.8	115.4	109.8
90	0	0	0	0	0	0	0	0
100	0	0	0	0	0	0	0	0
110	0	0	0	0	0	0	0	0
120	0	0	0	0	0	0	0	0
130	0	0	0	0	0	0	0	0
140	0	0	0	0	0	0	0	0
150	0	0	0	0	0	0	0	0
160	0	0	0	0	0	0	0	0
170	0	0	0	0	0	0	0	0
180	0	0	0	0	0	0	0	0
DEG	LUMINOUS INTENSITY:cd							

UGR Table - Corrected

UGR Table - Corrected

Reflectances

Ceiling Cavity	70	70	50	50	30	70	70	50	50	30
Walls	50	30	50	30	30	50	30	50	30	30
Floor Cavity	20	20	20	20	20	20	20	20	20	20

Room Size

X=2H Y=2H		UGR Viewed Crosswise					UGR Viewed Endwise				
3H		12.8	14.4	13.1	14.8	15.1	12.1	13.8	12.4	14.1	14.4
4H		14.8	16.3	15.2	16.6	17.0	14.0	15.5	14.3	15.8	16.2
6H		15.5	17.0	15.9	17.3	17.7	14.7	16.1	15.1	16.5	16.9
8H		16.1	17.5	16.5	17.8	18.2	15.3	16.6	15.7	17.0	17.3
12H		16.3	17.6	16.7	18.0	18.4	15.4	16.7	15.9	17.1	17.5
		16.4	17.7	16.9	18.0	18.5	15.6	16.8	16.0	17.2	17.6
4H	2H	13.4	14.8	13.8	15.2	15.5	12.8	14.3	13.2	14.6	15.0
	3H	15.6	16.8	16.0	17.2	17.6	15.0	16.2	15.4	16.6	17.0
	4H	16.5	17.6	17.0	18.0	18.5	15.8	16.9	16.2	17.3	17.7
	6H	17.2	18.2	17.7	18.7	19.1	16.5	17.5	16.9	17.9	18.4
	8H	17.5	18.4	17.9	18.8	19.3	16.7	17.6	17.2	18.1	18.5
	12H	17.7	18.5	18.2	19.0	19.4	16.9	17.7	17.4	18.2	18.7
8H	4H	16.8	17.7	17.3	18.2	18.6	16.2	17.1	16.7	17.5	18.0
	6H	17.7	18.5	18.2	18.9	19.4	17.0	17.8	17.5	18.3	18.8
	8H	18.0	18.7	18.5	19.2	19.7	17.4	18.0	17.9	18.5	19.0
	12H	18.3	18.9	18.8	19.4	19.9	17.6	18.2	18.1	18.7	19.3
12H	4H	16.9	17.7	17.4	18.2	18.6	16.3	17.1	16.7	17.6	18.0
	6H	17.8	18.5	18.3	18.9	19.4	17.1	17.8	17.7	18.3	18.8
	8H	18.1	18.7	18.6	19.2	19.8	17.5	18.1	18.0	18.6	19.2

Maximum UGR = 19.9

4.2 Goniophotometer Test

ZONAL LUMEN SUMMARY

	Zonal (lm)		Total (lm)	Percent
0-10	70.48	0 - 10	70.48	3.03%
10-20	203.73	0 - 20	274.21	11.78%
20-30	314.34	0 - 30	588.55	25.27%
30-40	388.67	0 - 40	977.22	41.96%
40-50	415.56	0 - 50	1392.78	59.81%
50-60	388.25	0 - 60	1781.03	76.48%
60-70	307.14	0 - 70	2088.17	89.67%
70-80	185.45	0 - 80	2273.62	97.64%
80-90	55.07	0 - 90	2328.69	100.00%
90-100	0.00	0 - 100	2328.69	100.00%
100-110	0.00	0 - 110	2328.69	100.00%
110-120	0.00	0 - 120	2328.69	100.00%
120-130	0.00	0 - 130	2328.69	100.00%
130-140	0.00	0 - 140	2328.69	100.00%
140-150	0.00	0 - 150	2328.69	100.00%
150-160	0.00	0 - 160	2328.69	100.00%
160-170	0.00	0 - 170	2328.69	100.00%
170-180	0.00	0 - 180	2328.69	100.00%

4.2 Goniophotometer Test

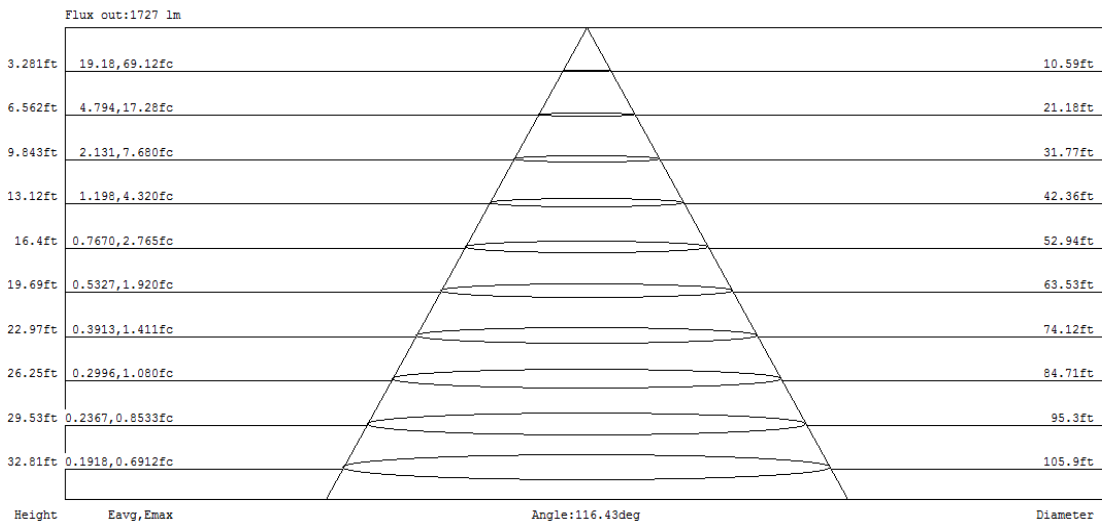
COEFFICIENTS OF UTILIZATION - ZONAL CAVITY METHOD

Coefficients Of Utilization - Zonal Cavity Method

Effective Floor Cavity Reflectance 0.20

RC	80				70				50			30			10			0
RW	70	50	30	10	70	50	30	10	50	30	10	50	30	10	50	30	10	0
0	119	119	119	119	116	116	116	116	111	111	111	106	106	106	102	102	102	100
1	108	103	99	95	105	101	97	93	97	93	90	93	90	87	89	87	85	83
2	98	89	82	76	95	87	81	75	84	78	74	81	76	72	77	74	70	68
3	89	78	70	63	86	76	69	62	73	67	61	71	65	60	68	63	59	57
4	81	69	60	53	79	68	59	52	65	58	52	63	56	51	60	55	50	48
5	75	61	52	45	72	60	51	45	58	50	44	56	49	44	54	48	43	41
6	69	55	46	39	67	54	45	39	52	45	39	51	44	38	49	43	38	36
7	64	50	41	35	62	49	40	34	47	40	34	46	39	34	45	38	34	32
8	59	45	37	31	58	45	36	31	43	36	30	42	35	30	41	35	30	28
9	55	42	33	28	54	41	33	27	40	32	27	39	32	27	38	32	27	25
10	52	38	30	25	50	38	30	25	37	30	25	36	29	25	35	29	24	23

CONE OF LIGHT DIAGRAM



4.0 LM-79 Measurement and Test Results

4.3 THD and PF Test

Model No.	T34FAHE2X4/17W/3 500K	Sample ID.	J1
Temperature (°C)	25.3	Humidity (%RH)	56.0

Test Method

The samples were tested according to the ANSI C82.77:2002.

The total harmonic distortion shall be measured to the 40th order.

The ambient temperature condition was maintained at $25^{\circ}\text{C} \pm 1^{\circ}\text{C}$. The sample measurements were made using a digital power meter and power supply. The sample was operated at rated voltage and was stabilized before measurement. The total harmonic distortion were calculated.

Test Results

Voltage (Vac)	Frequency (Hz)	Current (A)	Power (W)	Power Factor	THD
119.99	60	0.140	16.7	0.993	6.94%
276.95	60	0.069	17.6	0.917	7.50%

5.0 Equipment Information

Test Equipment			
Equipment ID	Equipment Name	Last Calibration Date	Calibration Due Date
DLF107	Integrating Sphere System	2021/12/26	2022/12/25
DLF108	Auxiliary Lamp	2021/12/26	2022/12/25
DLF122	Measurement Standard Lamp Standard Lamp Type: 220 V, 0.4720 A, Tungsten, Omni-derectional	2021/12/26	2022/12/25
DLF116	AC Power Source	2021/12/26	2022/12/25
DLF113	Power Meter	2021/12/26	2022/12/25
DLF112	Temperature Recorder	2021/12/26	2022/12/25
DLF114	Temperature & Humidity Datalogger	2021/12/26	2022/12/25
DLF101	Goniophotometer	2021/12/26	2022/12/25
DLF125	Standard Lamp Standard Lamp Type: 76.58 V, 6.7875 A, Tungsten, Omni-derectional	2021/12/26	2022/12/25
DLF104	AC Power Source	2021/12/26	2022/12/25
DLF507	DC Power Source	2021/12/26	2022/12/25
DLF102	Power Meter	2021/12/26	2022/12/25
DLF111	Temperature & Humidity Datalogger	2021/12/26	2022/12/25
DLF119	Power Meter	2021/12/26	2022/12/25
DLF031	Temperature data logger	2021/12/26	2022/12/25
DLF022	Digital power meter	2021/12/26	2022/12/25
DLF003	Temperature & Humidity Datalogger	2021/12/26	2022/12/25

***** End of Test Report*****