



# Photometric Test Report

## Relevant Standards

- IES LM-79-2008
- ANSI C82.77:2014

## Prepared For RAB LIGHTING INC

170 Ludlow Ave, PO BOX 970, Northvale, NJ 07647-2305 USA

Crystal Wu 13482123342, Crystal.Wu@rabweb.com

## Prepared By

Deliver Co., Ltd.

Block 11, 78 Keling Road, SSTP, Suzhou, China

0512-66801950, kevin.jia@szdeliver.com

## Project Number

**DLF1910105**

## Report Number

**DLF1910105-2a**

## Test Date

**2019/10/10**

## Issue Date

**2019/10/11**

### Prepared By

*Wangzun Zhu*

Wangzun Zhu

### Approved By

*Kevin Jia*

Kevin Jia

The results contained in this report pertain only to the tested sample.

This report shall not be reproduced, except in full, without written approval of Deliver Co.,Ltd.

This report must not be used by the client to claim product certification, approval, or endorsement by NVLAP.

## 1.0 Test List

Test Item	Test	Test Date	Model Number	Sample No.
1	Integrating Sphere Test	2019/10/10	T8-35-84P2S-865-DE-BYP	B1

### Remark(If any)

1、 This report shall not be used by the client to claim product endorsement by NVLAP, NIST or any agency of the US government.

2、 The results reported herein have been performed in accordance with the laboratory's terms of accreditation. This report shall not be reproduced except in full without the written approval of the Laboratory. The results in this report apply to the test sample(s) mentioned above at the time of the testing period only and are not to be used to indicate applicability to other similar products. This report does not imply that the product(s) has met the criteria for certification.

## 2.0 Production Description

**Luminaire Description:** T8-35-84P2S-865-DE-BYP

**Electrical Specification:** 120V,50/60HZ

### Photos of Luminaire Characteristics



## 4.0 LM-79 Measurement and Test Results

### 4.1 Integrating Sphere Test

Model No.	T8-35-84P2S-865-DE-BYP	Sample ID.	B1
Operate time (Min.)	90	Stabilization time (Min.)	45
Temperature (°C)	25.3	Humidity (%RH)	56.0

#### Test Method

The samples were tested according to the IES LM-79-2008.

Photometric parameters were measured using an integrating sphere, a spectroradiometer and software. The ambient temperature condition inside the sphere was maintained at  $25^{\circ}\text{C} \pm 1^{\circ}\text{C}$ .

The sample measurements were made using a spectroradiometer connected by a fiber optic cable and detector through the detector port of the integrating sphere.

The voltage of an AC power supply (RMS voltage) or DC power supply (instantaneous voltage) applied to the device under test shall be regulated to within  $\pm 0.2$  percent under load.

The sample was measured using  $4\pi$  geometry and operated at rated voltage and was stabilized before measurement. Chromaticity coordinates, correlated color temperature and color rendering index were calculated from the spectral radiant flux measurements taken at 1 nm intervals over the range of 380 to 780 nm.

#### Test Result

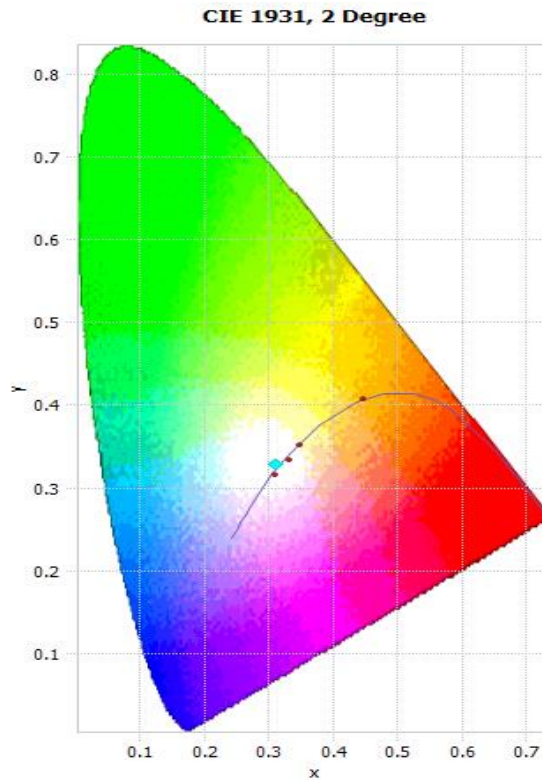
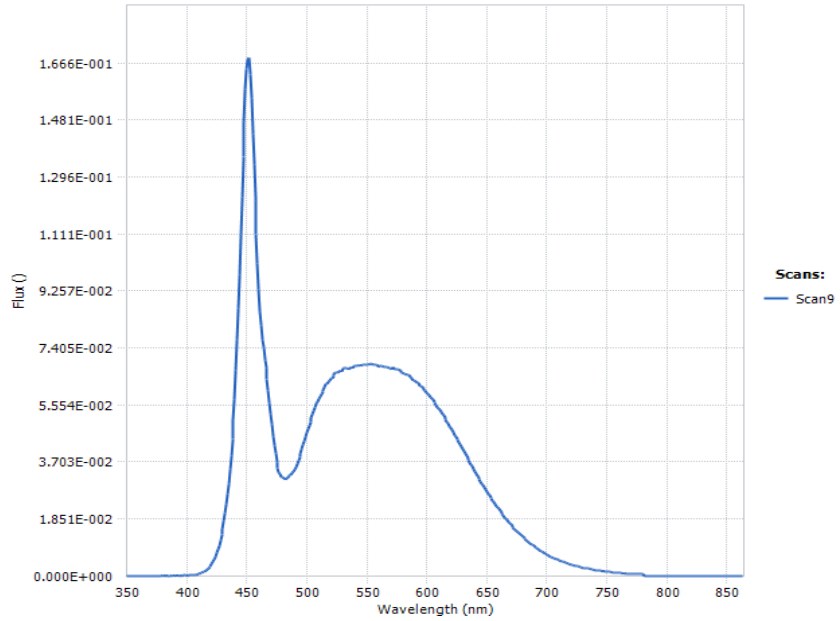
Voltage (Vac)	Frequency (Hz)	Current (A)	Power (W)	Power Factor
119.98	60	0.290	34.3	0.986

#### Test Result

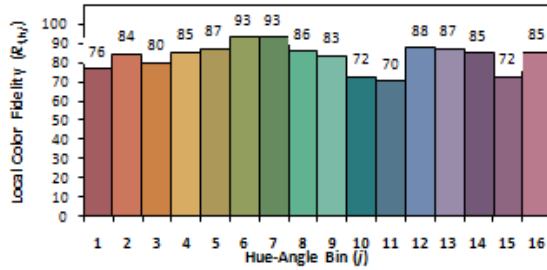
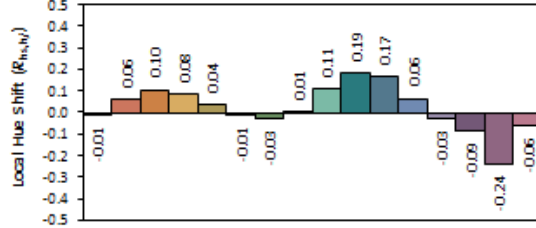
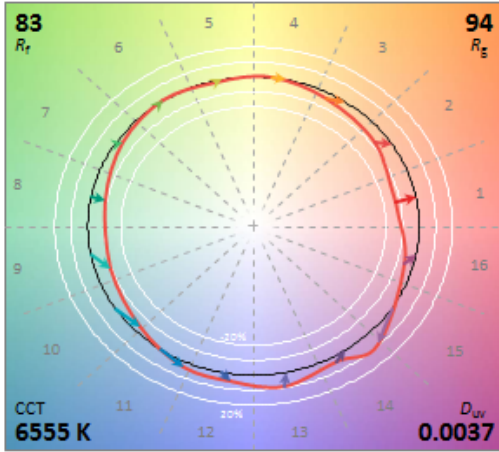
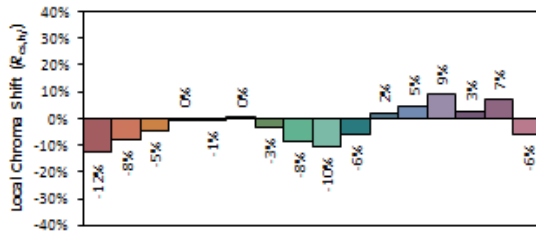
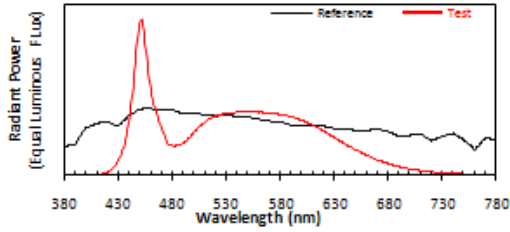
CCT (K)	CRI	Duv	Flux (lm)	Luminous Efficacy (lm/W)
6550	83	3.6E-03	4508	131.4
Rf	Rg	Rcs,h1		
83	94	-12.00%		

### 4.1 Integrating Sphere Test

$\Phi(v)$ :	4.508E03	lumens
$\Phi(v')$ :	1.001E04	lm'
Chrom x:	0.3118	
Chrom y:	0.3290	
Chrom u:	0.1972	
Chrom v:	0.3121	
Duv:	0.0036	
Chrom u':	0.1972	
Chrom v':	0.4682	
$\lambda$ (peak):	451.4	nm
$\lambda$ (center):	452.1	nm
$\lambda$ (centroid):	540.3	nm
$\lambda$ (dom):	489.1	nm
FWHM:	18.6	nm
Purity:	7.6	%
CCT:	6550.0	°K
$\eta$ :	N/A	lm/W
SDCM:	4.7F 6500	
Correlation:	0.0054	
Corr. Coef.:	0.000462434	
RA:	83.04441937	
R1:	81.5	
R2:	87.3	
R3:	89.7	
R4:	82.9	
R5:	81.7	
R6:	81	



### 4.1 Integrating Sphere Test



SPD Table

Wavel Length (nm)	Spectral Power (W/nm)	Wavel Length (nm)	Spectral Power (W/nm)	Wavel Length (nm)	Spectral Power (W/nm)	Wavel Length (nm)	Spectral Power (W/nm)	Wavel Length (nm)	Spectral Power (W/nm)
380	1.38E-04	421	4.00E-03	461	8.58E-02	501	4.76E-02	541	6.82E-02
381	4.75E-05	422	4.79E-03	462	8.14E-02	502	4.90E-02	542	6.81E-02
382	3.13E-05	423	5.50E-03	463	7.68E-02	503	5.01E-02	543	6.82E-02
383	1.88E-04	424	6.32E-03	464	7.40E-02	504	5.13E-02	544	6.85E-02
384	8.90E-05	425	7.47E-03	465	7.01E-02	505	5.26E-02	545	6.83E-02
385	8.40E-05	426	8.54E-03	466	6.75E-02	506	5.37E-02	546	6.85E-02
386	7.76E-05	427	9.98E-03	467	6.39E-02	507	5.46E-02	547	6.86E-02
387	9.38E-05	428	1.16E-02	468	6.01E-02	508	5.61E-02	548	6.84E-02
388	1.37E-04	429	1.34E-02	469	5.64E-02	509	5.64E-02	549	6.88E-02
389	1.02E-04	430	1.53E-02	470	5.26E-02	510	5.75E-02	550	6.85E-02
390	1.40E-04	431	1.79E-02	471	4.92E-02	511	5.85E-02	551	6.86E-02
391	7.78E-05	432	2.04E-02	472	4.54E-02	512	5.91E-02	552	6.86E-02
392	2.08E-04	433	2.32E-02	473	4.22E-02	513	5.99E-02	553	6.90E-02
393	7.70E-05	434	2.66E-02	474	3.96E-02	514	6.05E-02	554	6.89E-02
394	1.53E-04	435	2.99E-02	475	3.68E-02	515	6.12E-02	555	6.87E-02
395	5.11E-05	436	3.47E-02	476	3.51E-02	516	6.23E-02	556	6.86E-02
396	1.12E-04	437	3.92E-02	477	3.36E-02	517	6.25E-02	557	6.86E-02
397	1.98E-04	438	4.45E-02	478	3.31E-02	518	6.33E-02	558	6.87E-02
398	2.33E-04	439	5.07E-02	479	3.21E-02	519	6.35E-02	559	6.83E-02
399	1.49E-04	440	5.74E-02	480	3.21E-02	520	6.44E-02	560	6.80E-02
400	9.66E-05	441	6.67E-02	481	3.16E-02	521	6.42E-02	561	6.83E-02
401	2.22E-04	442	7.66E-02	482	3.14E-02	522	6.50E-02	562	6.82E-02
402	2.07E-04	443	8.68E-02	483	3.19E-02	523	6.56E-02	563	6.82E-02
403	2.24E-04	444	9.77E-02	484	3.20E-02	524	6.59E-02	564	6.80E-02
404	3.22E-04	445	1.11E-01	485	3.24E-02	525	6.59E-02	565	6.78E-02
405	3.26E-04	446	1.23E-01	486	3.27E-02	526	6.61E-02	566	6.77E-02
406	2.89E-04	447	1.36E-01	487	3.27E-02	527	6.64E-02	567	6.79E-02
407	4.77E-04	448	1.48E-01	488	3.34E-02	528	6.68E-02	568	6.75E-02
408	4.46E-04	449	1.58E-01	489	3.40E-02	529	6.64E-02	569	6.74E-02
409	5.38E-04	450	1.65E-01	490	3.48E-02	530	6.75E-02	570	6.74E-02
410	6.91E-04	451	1.68E-01	491	3.54E-02	531	6.76E-02	571	6.73E-02
411	8.18E-04	452	1.68E-01	492	3.64E-02	532	6.75E-02	572	6.77E-02
412	9.10E-04	453	1.63E-01	493	3.74E-02	533	6.75E-02	573	6.72E-02
413	1.13E-03	454	1.55E-01	494	3.85E-02	534	6.76E-02	574	6.71E-02
414	1.37E-03	455	1.44E-01	495	3.99E-02	535	6.73E-02	575	6.70E-02
415	1.53E-03	456	1.34E-01	496	4.11E-02	536	6.76E-02	576	6.71E-02
416	1.79E-03	457	1.22E-01	497	4.29E-02	537	6.80E-02	577	6.67E-02
417	2.20E-03	458	1.11E-01	498	4.38E-02	538	6.75E-02	578	6.67E-02
418	2.53E-03	459	1.01E-01	499	4.51E-02	539	6.84E-02	579	6.61E-02
419	2.87E-03	460	9.31E-02	500	4.65E-02	540	6.82E-02	580	6.60E-02
420	3.38E-03								

Wavel Length (nm)	Spectral Power (W/nm)	Wavel Length (nm)	Spectral Power (W/nm)	Wavel Length (nm)	Spectral Power (W/nm)	Wavel Length (nm)	Spectral Power (W/nm)	Wavel Length (nm)	Spectral Power (W/nm)
581	6.57E-02	621	4.73E-02	661	2.11E-02	701	6.77E-03	741	1.92E-03
582	6.56E-02	622	4.65E-02	662	2.07E-02	702	6.56E-03	742	1.79E-03
583	6.55E-02	623	4.58E-02	663	2.00E-02	703	6.33E-03	743	1.76E-03
584	6.53E-02	624	4.54E-02	664	1.95E-02	704	6.15E-03	744	1.71E-03
585	6.55E-02	625	4.46E-02	665	1.90E-02	705	5.97E-03	745	1.60E-03
586	6.46E-02	626	4.41E-02	666	1.86E-02	706	5.78E-03	746	1.56E-03
587	6.43E-02	627	4.33E-02	667	1.82E-02	707	5.61E-03	747	1.64E-03
588	6.42E-02	628	4.26E-02	668	1.76E-02	708	5.40E-03	748	1.52E-03
589	6.36E-02	629	4.20E-02	669	1.70E-02	709	5.27E-03	749	1.49E-03
590	6.37E-02	630	4.11E-02	670	1.66E-02	710	5.08E-03	750	1.45E-03
591	6.32E-02	631	4.04E-02	671	1.62E-02	711	4.95E-03	751	1.31E-03
592	6.27E-02	632	3.96E-02	672	1.58E-02	712	4.86E-03	752	1.29E-03
593	6.27E-02	633	3.91E-02	673	1.54E-02	713	4.66E-03	753	1.26E-03
594	6.18E-02	634	3.82E-02	674	1.50E-02	714	4.57E-03	754	1.20E-03
595	6.17E-02	635	3.76E-02	675	1.46E-02	715	4.41E-03	755	1.20E-03
596	6.13E-02	636	3.70E-02	676	1.42E-02	716	4.19E-03	756	1.15E-03
597	6.08E-02	637	3.63E-02	677	1.37E-02	717	4.09E-03	757	1.08E-03
598	6.03E-02	638	3.56E-02	678	1.34E-02	718	3.97E-03	758	1.10E-03
599	6.02E-02	639	3.47E-02	679	1.31E-02	719	3.85E-03	759	1.03E-03
600	5.95E-02	640	3.40E-02	680	1.26E-02	720	3.70E-03	760	9.30E-04
601	5.93E-02	641	3.32E-02	681	1.22E-02	721	3.59E-03	761	9.57E-04
602	5.88E-02	642	3.26E-02	682	1.19E-02	722	3.49E-03	762	9.37E-04
603	5.80E-02	643	3.19E-02	683	1.15E-02	723	3.33E-03	763	8.32E-04
604	5.77E-02	644	3.13E-02	684	1.12E-02	724	3.33E-03	764	9.02E-04
605	5.73E-02	645	3.08E-02	685	1.09E-02	725	3.22E-03	765	6.87E-04
606	5.66E-02	646	3.01E-02	686	1.06E-02	726	3.09E-03	766	8.44E-04
607	5.61E-02	647	2.94E-02	687	1.03E-02	727	2.97E-03	767	8.28E-04
608	5.55E-02	648	2.87E-02	688	1.00E-02	728	2.91E-03	768	7.81E-04
609	5.49E-02	649	2.80E-02	689	9.86E-03	729	2.86E-03	769	7.15E-04
610	5.43E-02	650	2.74E-02	690	9.48E-03	730	2.68E-03	770	7.90E-04
611	5.39E-02	651	2.67E-02	691	9.05E-03	731	2.69E-03	771	7.11E-04
612	5.31E-02	652	2.63E-02	692	8.91E-03	732	2.54E-03	772	6.97E-04
613	5.26E-02	653	2.56E-02	693	8.65E-03	733	2.43E-03	773	7.31E-04
614	5.20E-02	654	2.51E-02	694	8.35E-03	734	2.39E-03	774	6.10E-04
615	5.14E-02	655	2.45E-02	695	8.14E-03	735	2.41E-03	775	6.19E-04
616	5.07E-02	656	2.39E-02	696	7.90E-03	736	2.25E-03	776	5.65E-04
617	4.98E-02	657	2.33E-02	697	7.74E-03	737	2.15E-03	777	6.50E-04
618	4.95E-02	658	2.27E-02	698	7.41E-03	738	2.14E-03	778	5.24E-04
619	4.85E-02	659	2.23E-02	699	7.19E-03	739	2.03E-03	779	5.51E-04
620	4.80E-02	660	2.17E-02	700	6.98E-03	740	1.91E-03	780	5.88E-04

## 6.0 Equipment Information

Test Equipment			
Equipment ID	Equipment Name	Last Calibration Date	Calibration Due Date
DLF107	Integrating Sphere System	2018/12/26	2019/12/25
DLF108	Auxiliary Lamp	2018/12/26	2019/12/25
DLF122	Measurement Standard Lamp Standard Lamp Type: 220 V, 0.4720 A, Tungsten, Omni-derectional	2018/12/26	2019/12/25
DLF116	AC Power Source	2018/12/26	2019/12/25
DLF113	Power Meter	2018/12/26	2019/12/25
DLF112	Temperature Recorder	2018/12/26	2019/12/25
DLF114	Temperature & Humidity Datalogger	2018/12/26	2019/12/25
DLF101	Goniophotometer	2018/12/26	2019/12/25
DLF125	Standard Lamp Standard Lamp Type: 76.58 V, 6.7875 A, Tungsten, Omni-derectional	2018/12/26	2019/12/25
DLF104	AC Power Source	2018/12/26	2019/12/25
DLF507	DC Power Source	2018/12/26	2019/12/25
DLF102	Power Meter	2018/12/26	2019/12/25
DLF111	Temperature & Humidity Datalogger	2018/12/26	2019/12/25
DLF119	Power Meter	2018/12/26	2019/12/25
DLF031	Temperature data logger	2018/12/26	2019/12/25
DLF022	Digital power meter	2018/12/26	2019/12/25
DLF003	Temperature & Humidity Datalogger	2018/12/26	2019/12/25

\*\*\*\*\* End of Test Report\*\*\*\*\*