



LM-79-08 TEST REPORT

for

RAB Lighting Inc

170 Ludlow Avenue, Northvale, New Jersey 07647 USA

LED Tube

Model: T8-9.5-48G-850-SD-BYP/2

Laboratory: Leading Testing Laboratories

NVLAP CODE: 200960-0

3rd Floor, Bld. 2, NO. 96 Longchuanwu Rd Qianjiang Economy Dev. Zone, YuhangDist,
Hangzhou, Zhejiang Province, China 311100

Tel: +86571 86376106

www.ledtestlab.com

Report No.: HZ21060026j

The laboratory that conducted the testing detailed in this report has been accredited for SSL by NVLAP.

Review by:

Engineer: April Zou

Jul. 01, 2021

Approved by:



Manager: Jim Zhang

Jul. 01, 2021

Note: This report does not imply product certification, approval, or endorsement by NVLAP, NIST, or any agency of the Federal Government.

TEST SUMMARY

Model	T8-9.5-48G-850-SD-BYP/2
Luminous Efficacy (Lumens /Watt)	176.1
Total Luminous Flux (Lumens)	1752.2
Power (Watts)	9.95
Power Factor	0.9719
CCT (K)	5105
CRI	82.9
Stabilization Time (Light & Power)	60 mins
Note	5000K

Table 1: Executive Data Summary

Test specifications:

Date of Receipt : Feb. 07, 2021
Date of Test : Feb. 08, 2021
Test item : Total Luminous Flux, Luminous Efficacy, Correlated Color Temperature, Color Rendering Index, Chromaticity Coordinate, Electrical parameters
Reference Standard : IESNA LM-79-2008 Approved Method for the Electrical and Photometric Measurements of Solid-State Lighting Products
ANSI/IES TM-30-18 IES Method for Evaluating Light Source Color Rendition

TABLE OF CONTENT

LM-79-08 TEST REPORT	1
TEST SUMMARY	2
SAMPLE PHOTO	4
TEST RESULTS	5
Sphere-Spectroradiometer Method.....	5
Spectral Power Distribution - Sphere Spectroradiometer Method	6
Chromaticity Diagram - Sphere Spectroradiometer Method.....	7
Nominal CCT Quadrangles – Sphere Spectroradiometer Method	8
Color Rendition Report – Sphere Spectroradiometer Method	9
EQUIPMENT LIST	10
TEST METHODS	10
Seasoning of SSL Product.....	10
Sphere-Spectroradiometer Method- Photometric and Electrical Measurements.....	10

SAMPLE PHOTO



Figure 1- Overview of the sample

Equipment Under Test(EUT)

Name	: LED Tube
Model	: T8-9.5-48G-850-SD-BYP/2
Electrical Ratings	: 120V, 50/60Hz, 9.5W
Product Description	: 5000K

TEST RESULTS

Test ambient temperature was 26.0 °C.

Base orientation was horizontal. Test was conducted without a dimmer in the circuit.

The stabilization time of the sample was 60 minutes, and the total operating time including stabilization was 65 minutes.

Sphere-Spectroradiometer Method

Parameter	Result
Test Voltage (V)	120.0
Voltage frequency (Hz)	60
Test Current (A)	0.085
Power Factor	0.9719
Test Power (W)	9.95
THD A%	22.47
Luminous Efficacy (lm/W)	176.1
Total Luminous Flux (lm)	1752.2
Color Rendering Index (CRI)	82.9
R9	2.8
Correlated Color Temperature (CCT)(K)	5105
Chromaticity Chroma x	0.3422
Chromaticity Chroma y	0.3507
Chromaticity Chroma u	0.2098
Chromaticity Chroma v	0.3225
Duv	0.0007
Chromaticity Chroma u'	0.2098
Chromaticity Chroma v'	0.4838

Special Color Rendering Indices	
R1	81.4
R2	89.7
R3	93.9
R4	81.8
R5	82.1
R6	84.4
R7	85.4
R8	64.8
R9	2.8
R10	75.1
R11	81.4
R12	60.3
R13	83.9
R14	97.2

Table 2: Test data per Sphere-Spectroradiometer Method

Note: According to CIE 1976 (u',v') diagram, $u' = u / (-2x + 12y + 3)$, $v' = 3v / 2 = 9y / (-2x + 12y + 3)$.

Spectral Power Distribution - Sphere Spectroradiometer Method

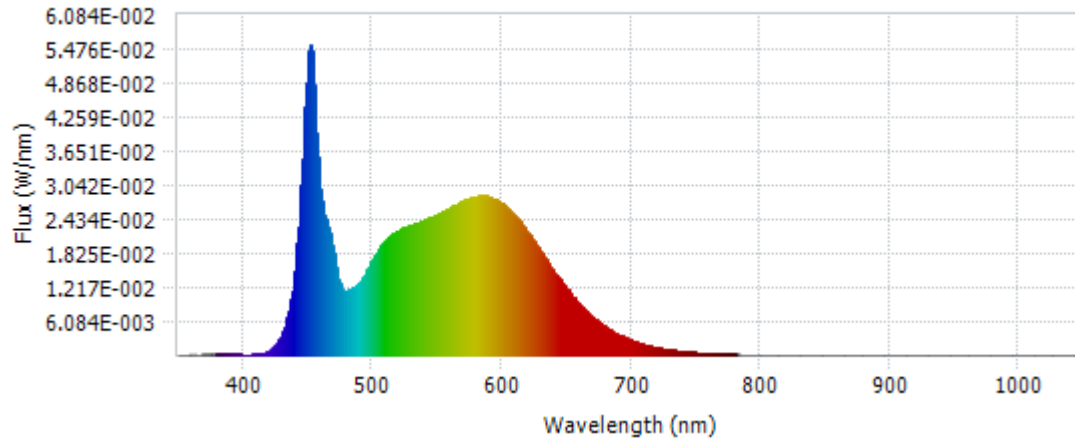
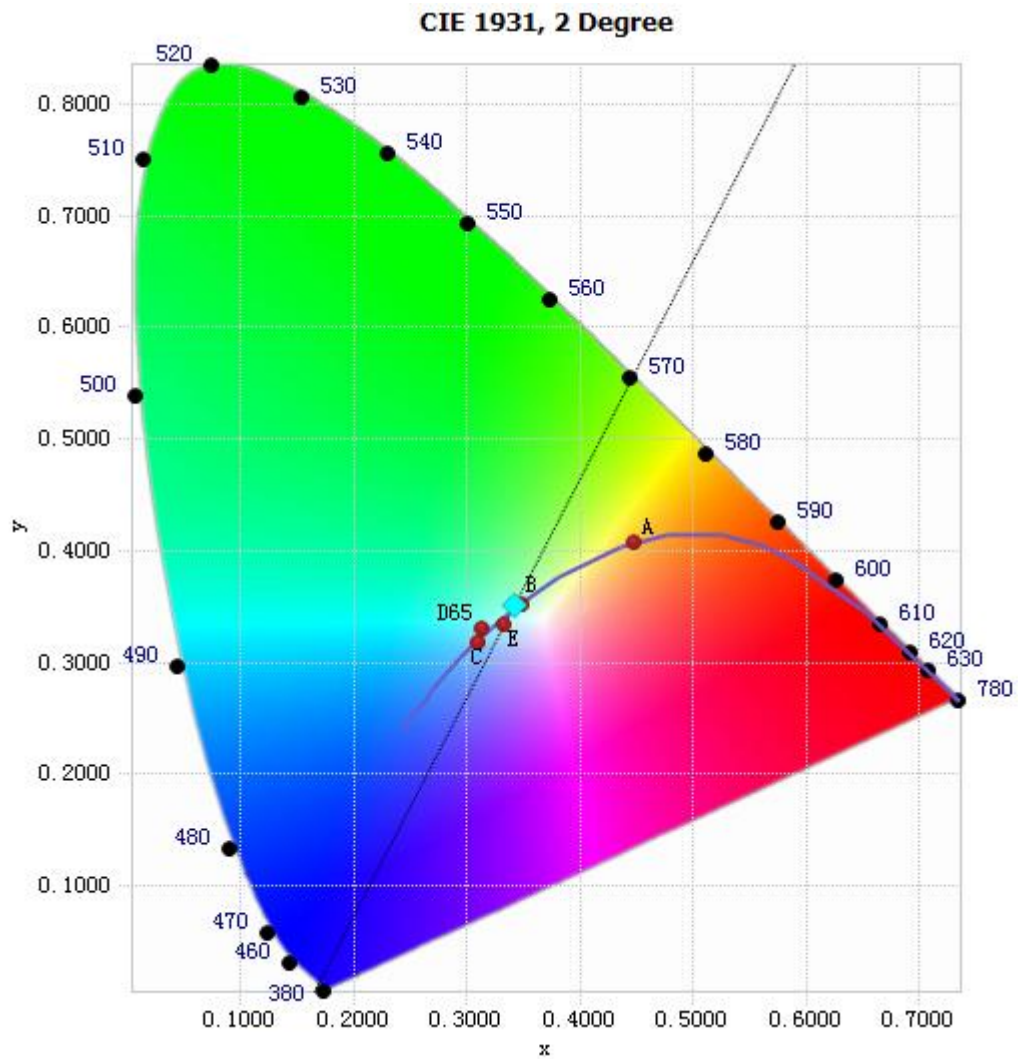


Chart 1: Spectral Power Distribution

Spectral Distribution over Visible Wavelength							
WL(nm)	Radiant(Watts)	WL(nm)	Radiant(Watts)	WL(nm)	Radiant(Watts)	WL(nm)	Radiant(Watts)
380	2.30E-04	485	1.21E-02	590	2.83E-02	695	3.20E-03
385	2.11E-04	490	1.31E-02	595	2.80E-02	700	2.73E-03
390	2.27E-04	495	1.49E-02	600	2.72E-02	705	2.31E-03
395	2.15E-04	500	1.71E-02	605	2.63E-02	710	1.97E-03
400	1.80E-04	505	1.90E-02	610	2.50E-02	715	1.66E-03
405	1.70E-04	510	2.04E-02	615	2.36E-02	720	1.43E-03
410	2.24E-04	515	2.16E-02	620	2.20E-02	725	1.21E-03
415	4.20E-04	520	2.23E-02	625	2.03E-02	730	1.03E-03
420	8.38E-04	525	2.28E-02	630	1.86E-02	735	8.76E-04
425	1.77E-03	530	2.33E-02	635	1.69E-02	740	7.42E-04
430	3.77E-03	535	2.37E-02	640	1.52E-02	745	6.32E-04
435	7.77E-03	540	2.41E-02	645	1.35E-02	750	5.39E-04
440	1.51E-02	545	2.46E-02	650	1.19E-02	755	4.60E-04
445	3.05E-02	550	2.52E-02	655	1.05E-02	760	3.88E-04
450	5.20E-02	555	2.58E-02	660	9.18E-03	765	3.35E-04
455	4.83E-02	560	2.64E-02	665	8.00E-03	770	2.86E-04
460	2.96E-02	565	2.70E-02	670	6.90E-03	775	2.45E-04
465	2.37E-02	570	2.76E-02	675	5.95E-03	780	2.11E-04
470	1.83E-02	575	2.80E-02	680	5.12E-03		
475	1.28E-02	580	2.84E-02	685	4.39E-03		
480	1.15E-02	585	2.85E-02	690	3.76E-03		

Table 3: Spectral Power Distribution Numerical Data per Sphere - Spectroradiometer Method

Chromaticity Diagram - Sphere Spectroradiometer Method



Tristimulus values(x, y): (0.3422, 0.3507)

Chart 2: Chromaticity Diagram per Sphere - Spectroradiometer Method

Note: The location on the diagram of the tristimulus coordinates are indicated by the blue diamond.

Nominal CCT Quadrangles – Sphere Spectroradiometer Method

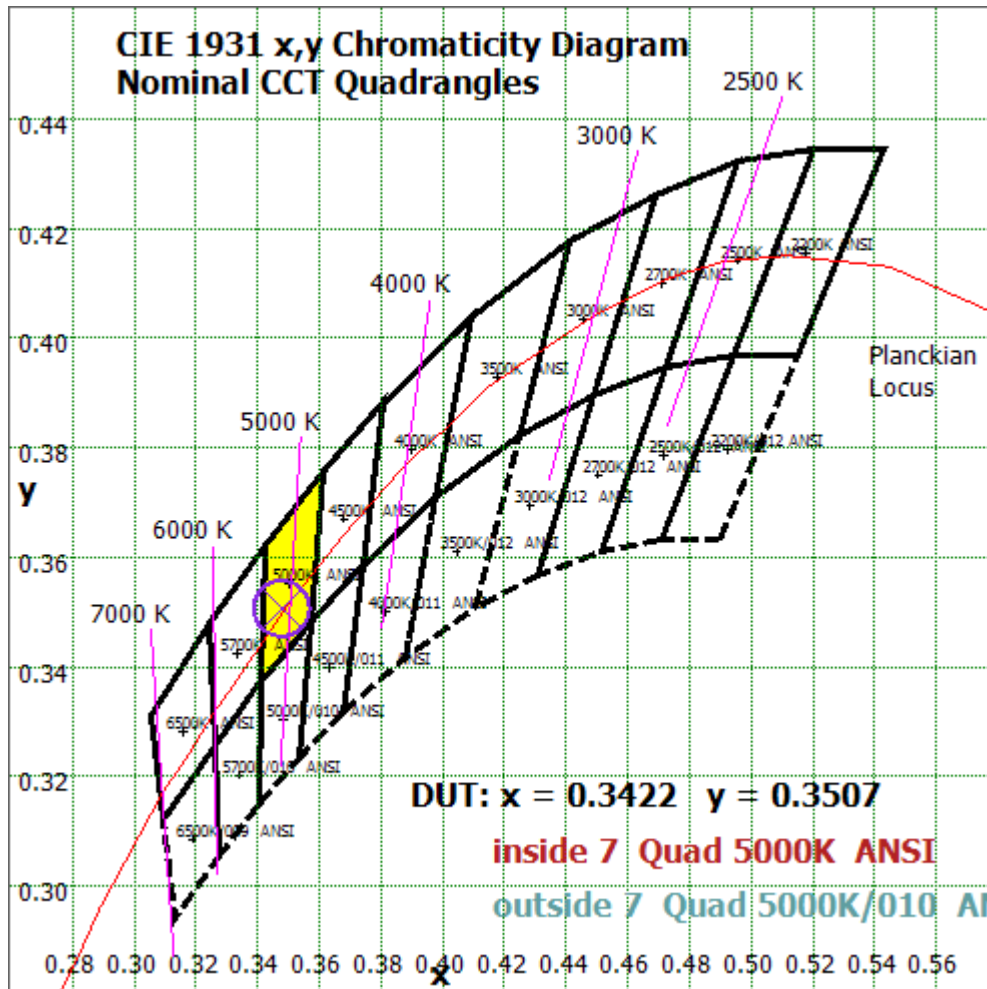


Chart 3: Plot of Lamp x/y coordinates on CIE 1931 Chromaticity Diagram

Color Rendition Report – Sphere Spectroradiometer Method

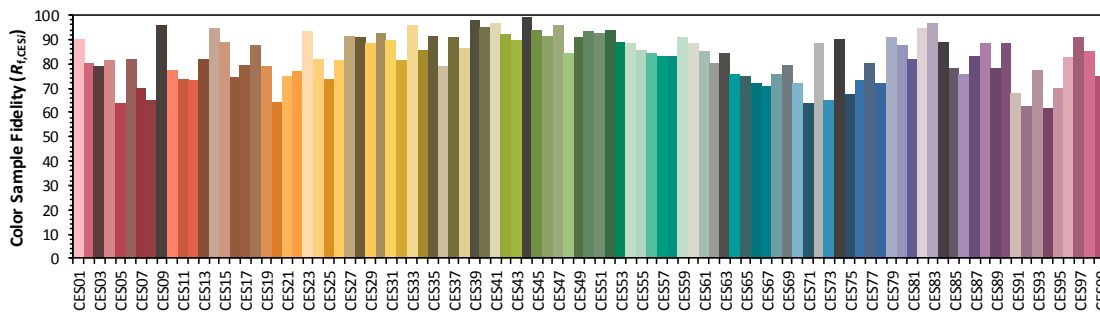
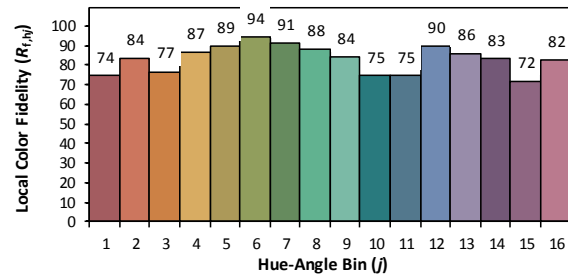
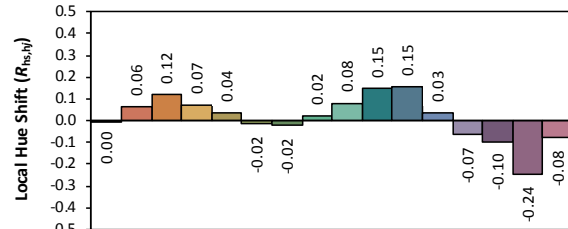
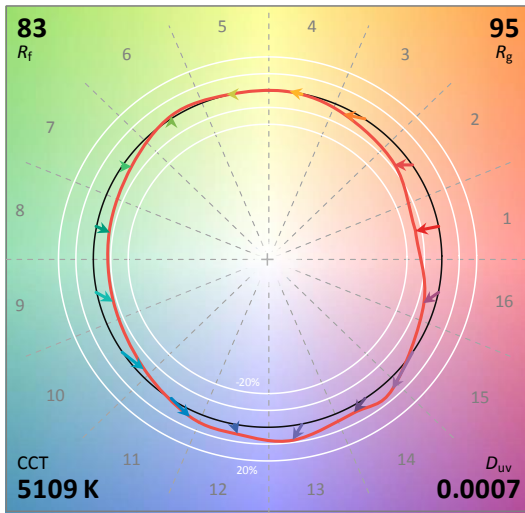
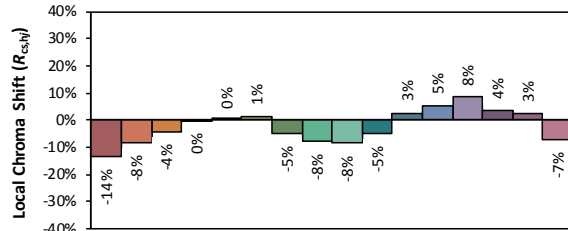
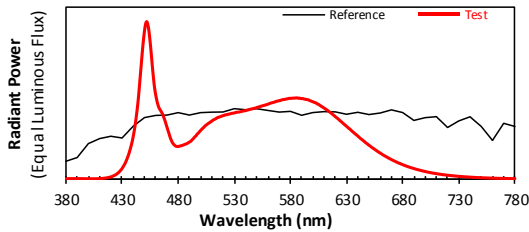
ANSI/IES TM-30-18 Color Rendition Report

Source: LED

Manufacturer: RAB Lighting Inc

Date: 2021/02/08

Model: T8-9.5-48G-850-SD-BYP/2



Notes: This is a recommended method for displaying ANSI/IES TM-30-18 information.

x 0.3422
 y 0.3507
 u' 0.2098
 v' 0.4838

CIE 13.3-1995 (CRI)	
R_a	83
R_g	3

Colors are for visual orientation purposes only. Created with the ANSI/IES TM-30-18 Calculator Version 2.00.

Chart 4: Full Report Created with the IES TM-30 Calculator

Note: The values in this diagram might be a little different from the values in Table 2 due to rounding.

EQUIPMENT LIST

Test Equipment	Model	Equipment No.	Calibration Date	Calibration Due date
Integrate Sphere system	3M	HZTE015-04	Aug. 05, 2020	Aug. 04, 2021
Digital Power Meter	WT210	HZTE008-01	Aug. 05, 2020	Aug. 04, 2021
AC Power Supply	PCR 500L	HZTE001-07	Aug. 05, 2020	Aug. 04, 2021
DC Power Supply	IT6154	HZTE004-04	Aug. 05, 2020	Aug. 04, 2021
Temperature and humidity recorder	JR900	HZTE018-02	Aug. 05, 2020	Aug. 04, 2021
Standard source	SCL-1400	HZTE012-02	Aug. 05, 2020	Aug. 04, 2021
Temperature Meter	TES1310	HZTE017-01	Aug. 05, 2020	Aug. 04, 2021

Table 4: Test Equipment List

TEST METHODS

Seasoning of SSL Product

For the purpose of rating new SSL products, SSL products shall be tested with no seasoning. Therefore, no seasoning was performed.

Sphere-Spectroradiometer Method- Photometric and Electrical Measurements

A Labsphere Model CDS 2100 Spectroradiometer and Two Meter Sphere was used to measure correlated color temperature, chromaticity coordinates, and the color rendering index for each SSL unit. The coating reflectance of each sphere is 98%. The measure geometry is 4π . Self-absorption correction is conducted in testing. Bandwidth of spectroradiometer is 350nm-1050nm.

Ambient temperature was measured at a position inside the sphere. Each SSL unit was operated on the client provided driver at the rated input voltage in its designated orientation.

The stabilization time typically ranges from 30 min (small integrated LED lamps) to 2 or more hours for large SSL luminaires). It can be judged that stability is reached when the variation (maximum – minimum) of at least 3 readings of the light output and electrical power over a period of 30 min, taken 15 minutes apart, is less than 0.5 %.

Electrical measurements including voltage, current, and power were measured using the Yokogawa Power Analyzer.

The standard reference of the integrated sphere system is halogen incandescent lamp, the intensity distribution type is omni-directional, and is traceable to the National Institute of Standards and Technology.

The uncertainty of integrating sphere system reported in this document is expanded uncertainty is 2.1% with a coverage factor $k=2$.

*** End of Report ***

This report is considered invalidated without the Special Seal for Inspection of the LTL. This report shall not be altered, increased or deleted. The results shown in this test report refer only to the sample(s) tested. Without written approval of LTL, this test report shall not be copied except in full and published as advertisement.