

Spectrum Test Report

Sample : 20250411004
Specification : TICYY
Sample No. : 1M
Manufacturer : RAB Lighting INC

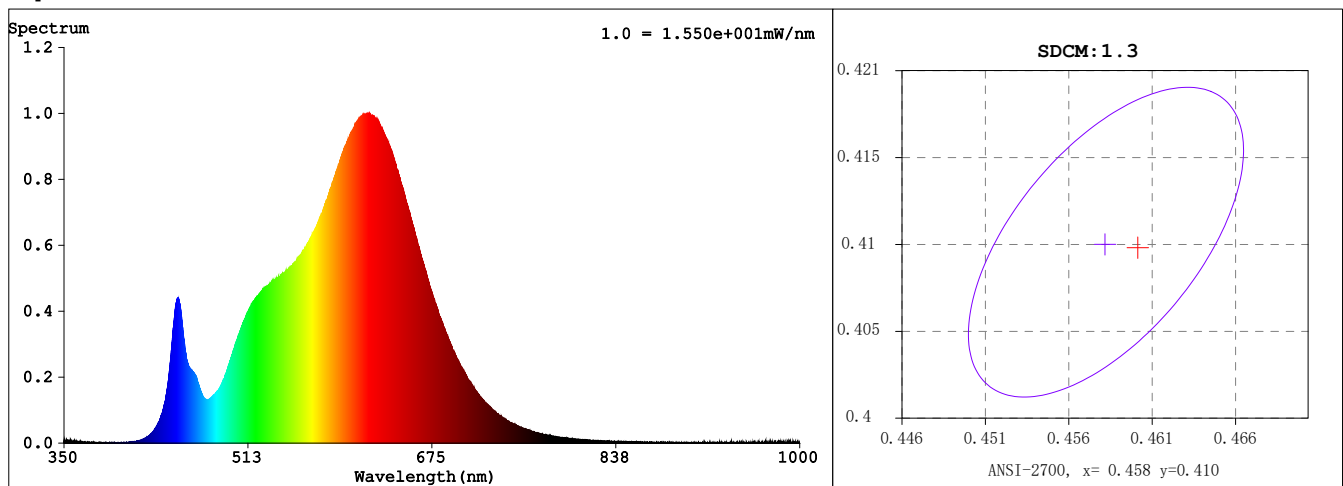
Date : 2025-04-10 15:29:17
Sam. Status :
Instrument : HAAS-2000(EVERFINE)
Test by : JZ
Assessor : damin

Test Condition

Temperature : 25.3 °C
WL Range : 350nm-1000nm
Test Mode : Fast Test

RH : 65.0%
IP : 57112 (87%)
T : 360 ms
Sensitivity : High

Spectrum



Colorimetric Parameters

Chromaticity Coordinate: $x = 0.4598$ $y = 0.4099$ / $u' = 0.2628$ $v' = 0.5271$ ($duv = -2.49e-04$) $Dx, Dy: -0.0004, -0.0008$

CCT= 2696K Prcp WL: $L_d = 584.3\text{nm}$ Purity=61.1%

Peak WL: $L_p = 620\text{nm}$ FWHM: =132.7nm Ratio:R=26.6% G=71.3% B=2.2%

Render Index: $R_a = 91.8$ AvgR = 88.5 TM30:Rf=90 Rg=100

R1 =92 R2 =96 R3 =98 R4 =93 R5 =92 R6 =96 R7 =90

R8 =76 R9 =47 R10=90 R11=95 R12=83 R13=93 R14=98 R15=86

LEVEL:OUT WHITE:ANSI_2700K

TLCI Parameters: TLCI = 83.9

Photometric & Radiometric Parameters

Flux = 692.89 lm Eff. : 83.96 lm/W $F_e = 2.3263$ W

Scotopic:877.27 S/P:1.2661

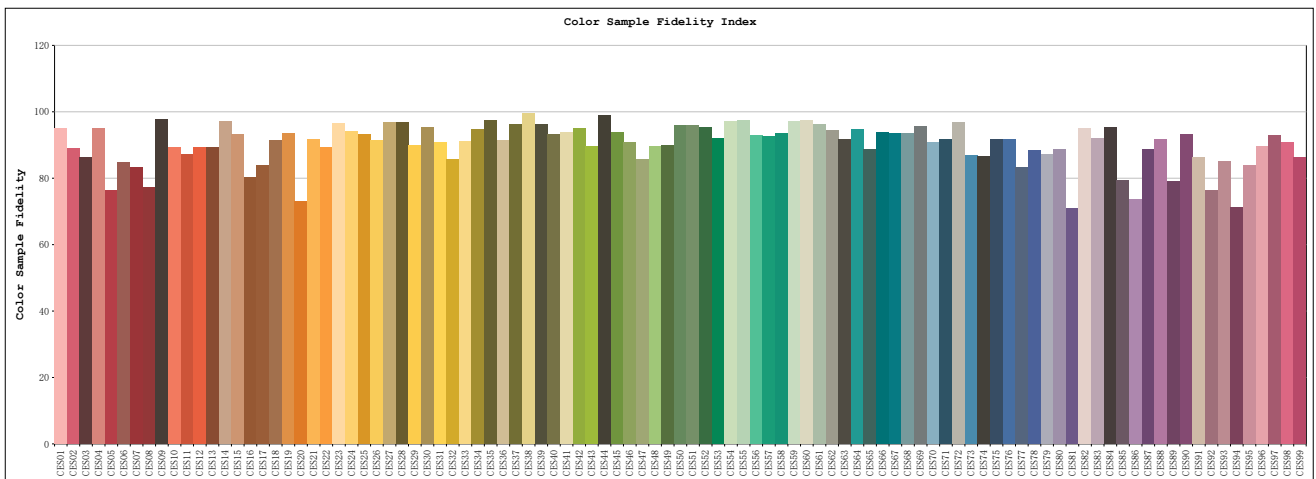
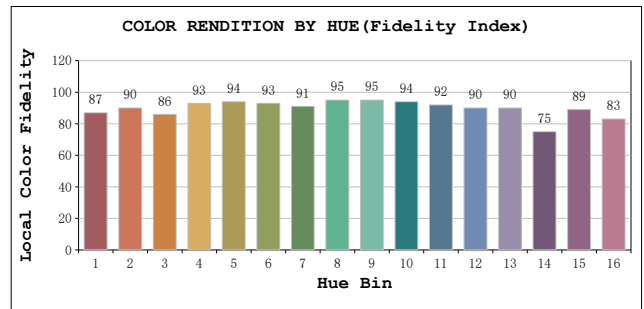
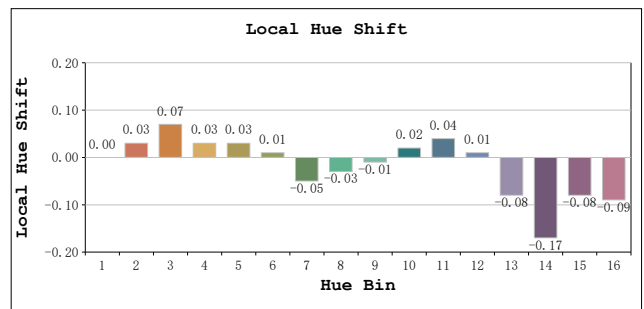
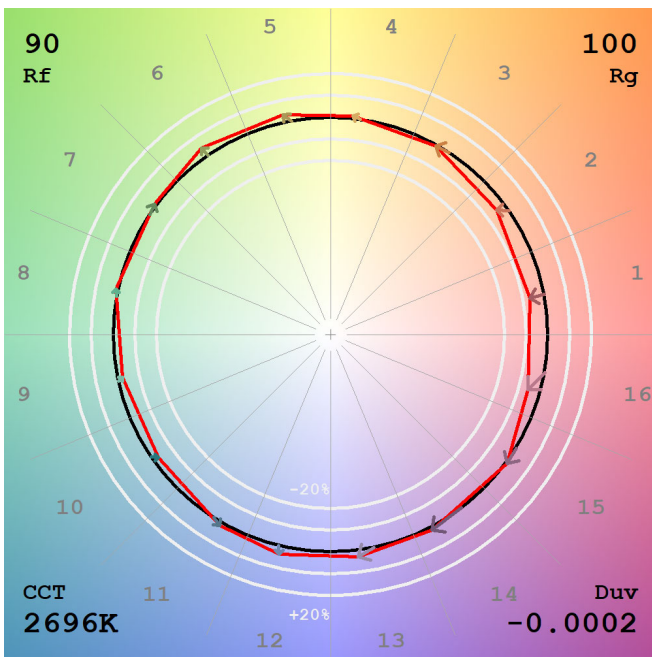
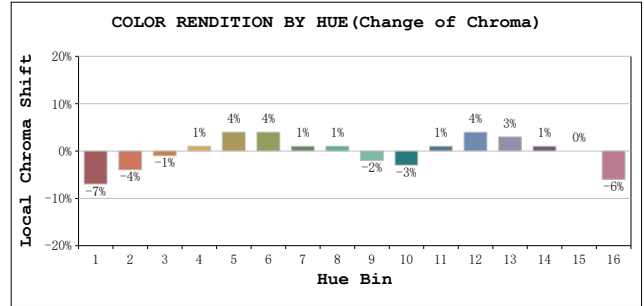
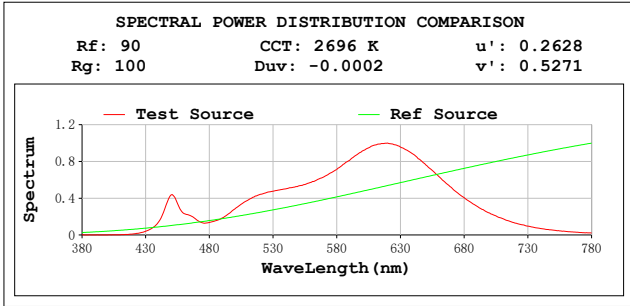
Electrical parameters

V = 24.00 V I = 0.3439 A P = 8.253 W PF = 1.000

Freq=0.00 Hz

TM30

View Angle: 2 Deg



All Rf:

Rf1 = 95.2	Rf2 = 88.9	Rf3 = 86.2	Rf4 = 95.1
Rf5 = 76.3	Rf6 = 84.9	Rf7 = 83.3	Rf8 = 77.2
Rf9 = 97.7	Rf10 = 89.4	Rf11 = 87.3	Rf12 = 89.2
Rf13 = 89.3	Rf14 = 97.1	Rf15 = 93.1	Rf16 = 80.4
Rf17 = 83.8	Rf18 = 91.4	Rf19 = 93.6	Rf20 = 73.1
Rf21 = 91.6	Rf22 = 89.2	Rf23 = 96.5	Rf24 = 94.2
Rf25 = 93.2	Rf26 = 91.4	Rf27 = 97.0	Rf28 = 96.9
Rf29 = 90.0	Rf30 = 95.3	Rf31 = 90.7	Rf32 = 85.8
Rf33 = 91.1	Rf34 = 94.8	Rf35 = 97.4	Rf36 = 91.5
Rf37 = 96.2	Rf38 = 99.6	Rf39 = 96.4	Rf40 = 93.2
Rf41 = 93.9	Rf42 = 95.0	Rf43 = 89.7	Rf44 = 98.8
Rf45 = 93.7	Rf46 = 90.9	Rf47 = 85.6	Rf48 = 89.7
Rf49 = 89.8	Rf50 = 95.8	Rf51 = 95.8	Rf52 = 95.3
Rf53 = 92.1	Rf54 = 97.2	Rf55 = 97.5	Rf56 = 92.8
Rf57 = 92.7	Rf58 = 93.6	Rf59 = 97.0	Rf60 = 97.5
Rf61 = 96.4	Rf62 = 94.4	Rf63 = 91.6	Rf64 = 94.8
Rf65 = 88.6	Rf66 = 93.9	Rf67 = 93.4	Rf68 = 93.5
Rf69 = 95.7	Rf70 = 90.9	Rf71 = 91.8	Rf72 = 96.7
Rf73 = 87.0	Rf74 = 86.5	Rf75 = 91.7	Rf76 = 91.7
Rf77 = 83.2	Rf78 = 88.5	Rf79 = 87.2	Rf80 = 88.6
Rf81 = 70.9	Rf82 = 95.1	Rf83 = 92.1	Rf84 = 95.4
Rf85 = 79.3	Rf86 = 73.5	Rf87 = 88.6	Rf88 = 91.6
Rf89 = 79.1	Rf90 = 93.3	Rf91 = 86.4	Rf92 = 76.4
Rf93 = 85.2	Rf94 = 71.4	Rf95 = 83.8	Rf96 = 89.5
Rf97 = 92.9	Rf98 = 90.7	Rf99 = 86.3	