

# Photometric Test Report

## Relevant Standards

- ☒ IES LM-79-2008
- ☒ ANSI C82.77:2017

## Prepared For

**RAB Lighting Inc.**

Room 6A33, No.1388, Wuzhong road, Shanghai, China

Xiao Xiang, 15921313292, Gary.Xiao@rabweb.com

## Prepared By

**Deliver Co., Ltd.**

Block 11, 78 Keling Road, SSTP, Suzhou, China

0512-66801950, kevin.jia@szdeliver.com

## Project Number

**DLF2207110**

## Report Number

**DLF2207110-6a**

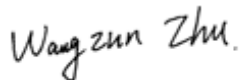
## Test Date

**2022/7/30**

## Issue Date

**2022/7/31**

## Prepared By



Wangzun Zhu

## Approved By



Kevin Jia

The results contained in this report pertain only to the tested sample.

This report shall not be reproduced, except in full, without written approval of Deliver Co., Ltd.

This report must not be used by the client to claim product certification, approval, or endorsement by NVLAP.

## 1.0 Test Summary

DLC Technical Requirements v5.1

Indoor - Linear Ambient - Direct Linear Ambient Luminaires				
Requirement Category	Test Method	Requirements		Test value
Luminaire Output (lm) (Goniophotometer - Section 4.2)	IES LM-79-2008	1500		2375
Lumen/ft (Goniophotometer - Section 4.2)	IES LM-79-2008	≥375		1188
Minimum Luminaire Efficacy (lm/W) (Goniophotometer - Section 4.2)	IES LM-79-2008	Standard 115	Premium 130	131.2
Power (Input Wattage) (W) (Goniophotometer - Section 4.2)	IES LM-79-2008	Wrost Case		18.1
Total Harmonic Distortion (A%) (THD & PF - section 4.3)	ANSI C82.77:2014	20.00%	120V	6.00%
		20.00%	277V	8.47%
Power Factor (THD & PF - section 4.3)	ANSI C82.77:2014	0.9	120V	0.998
		0.9	277V	0.975
Allowable CCTs* (K) (Integrating Sphere - Section 4.1)	IES LM-79-2008	7 step	3465±245	3689
		4 step	3465±124	
Minimum CRI (Integrating Sphere - Section 4.1)	IES LM-79-2008 CIE 13.3-1995	≥80		84
Minimum R9 (Integrating Sphere - Section 4.1)	IES LM-79-2008 CIE 13.3-1995	≥0		12
Minimum Rf (Integrating Sphere - Section 4.1)	ANSI/IES TM-30-18	≥70		84
Minimum Rg (Integrating Sphere - Section 4.1)	ANSI/IES TM-30-18	≥89		96
Minimum IES Rcs,h1 (Integrating Sphere - Section 4.1)	ANSI/IES TM-30-18	-12%≤IES Rcs,h1≤+23%		-12%
Zonal Lumen Requirement (0°-60°) (Goniophotometer - Section 4.2)	IES LM-79-2008	≥40%		48.85%
Corrected UGR (X=4H, Y=8H, 70/50/20%) (Goniophotometer - Section 4.2)	CIE 190-2010	<22		23.5
Input Voltage (V)				
(Goniophotometer - Section 4.2)	IES LM-79-2008	Wrost Case		277
(Goniophotometer - Section 4.2)		Non-Wrost Case		120
Input Current (A)				
(Goniophotometer - Section 4.2)	IES LM-79-2008	Wrost Case		0.067
(Goniophotometer - Section 4.2)		Non-Wrost Case		0.147
Power (Input Wattage - W)				
(Goniophotometer - Section 4.2)	IES LM-79-2008	Wrost Case		18.1
(Goniophotometer - Section 4.2)		Non-Wrost Case		17.6

## 2.0 Test List

Test Item	Test	Test Date	Model Number	Sample No.
1	Integrating Sphere Test	2022/7/30	TOMO-2/18W/3500K	F1
2	Goniophotometer Test	2022/7/30	TOMO-2/18W/3500K	F1
3	THD and PF Test	2022/7/30	TOMO-2/18W/3500K	F1

### Remark(If any)

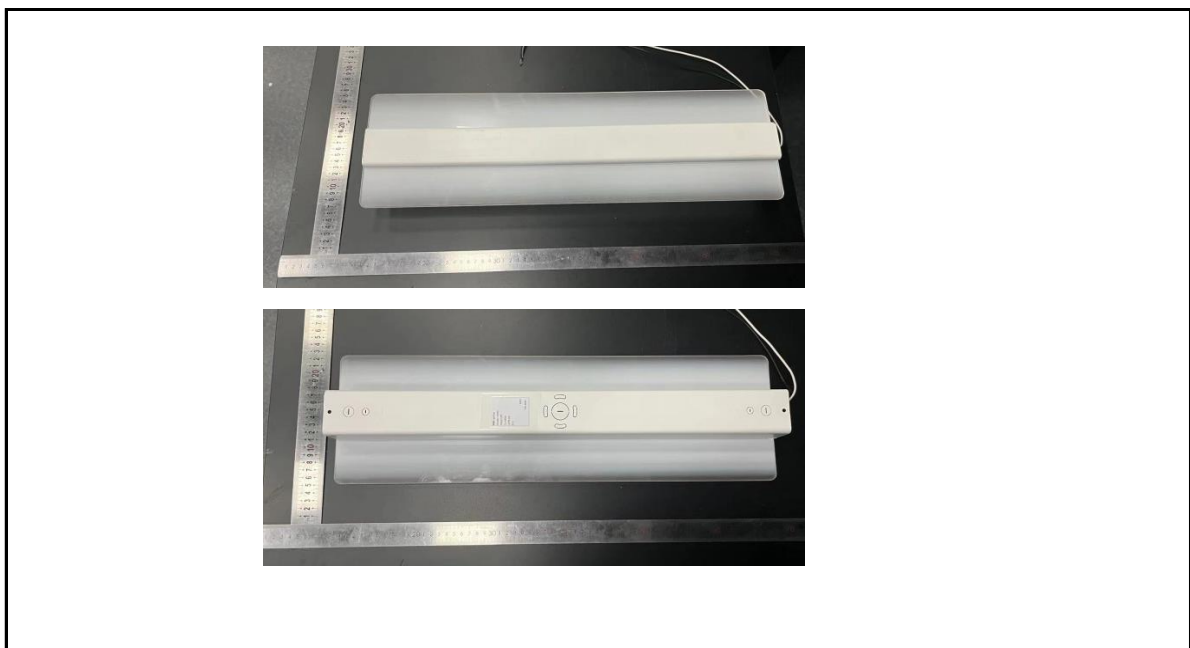
- 1、 This report shall not be used by the client to claim product endorsement by NVLAP, NIST or any agency of the US government.
- 2、 The results reported herein have been performed in accordance with the laboratory's terms of accreditation. This report shall not be reproduced except in full without the written approval of the Laboratory. The results in this report apply to the test sample(s) mentioned above at the time of the testing period only and are not to be used to indicate applicability to other similar products. This report does not imply that the product(s) has met the criteria for certification.

## 3.0 Production Description

**Luminaire Description:** TOMO-2/18W/3500K

**Electrical Specification:** 120V-277V,50/60HZ

### Photos of Luminaire Characteristics



## 4.0 LM-79 Measurement and Test Results

### 4.1 Integrating Sphere Test

Model No.	TOMO-2/18W/3500K	Sample ID.	F1
Operate time (Min.)	90	Stabilization time (Min.)	45
Temperature (°C)	25.3	Humidity (%RH)	56.0

#### Test Method

The samples were tested according to the IES LM-79-2008.

Photometric parameters were measured using an integrating sphere, a spectroradiometer and software. The ambient temperature condition inside the sphere was maintained at  $25^{\circ}\text{C} \pm 1^{\circ}\text{C}$ .

The sample measurements were made using a spectroradiometer connected by a fiber optic cable and detector through the detector port of the integrating sphere.

The voltage of an AC power supply (RMS voltage) or DC power supply (instantaneous voltage) applied to the device under test shall be regulated to within  $\pm 0.2$  percent under load.

The sample was measured using  $4\pi$  geometry and operated at rated voltage and was stabilized before measurement. Chromaticity coordinates, correlated color temperature and color rendering index were calculated from the spectral radiant flux measurements taken at 1 nm intervals over the range of 380 to 780 nm.

#### Test Result

Voltage (Vac)	Frequency (Hz)	Current (A)	Power (W)	Power Factor
120.01	60	0.146	17.5	0.998
276.99	60	0.066	17.9	0.975

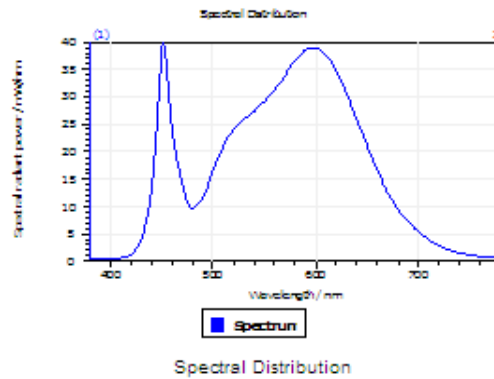
#### Test Result

CCT (K)	CRI	R9	Duv
3689	84	12	0.00002

Rf	Rg	IES Rcs,h1
84	96	-12%

## 4.1 Integrating Sphere Test

### Results

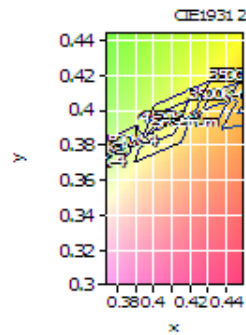


#### Spectral values

DominantWavelength 580.21 nm  
Purity 0.343  
PeakWavelength 451.83 nm  
Radiant Power 6.554 W  
Width50%:

#### Color Coordinates

Correlated Color Temperat 3689 K  
x: 0.3952 u: 0.2313 u': 0.2313  
y: 0.3854 v: 0.3383 v': 0.5075  
CRI01 82.2 CRI09 11.9  
CRI02 90.0 CRI10 76.2  
CRI03 95.6 CRI11 81.9  
CRI04 82.7 CRI12 62.6  
CRI05 82.3 CRI13 84.1  
CRI06 86.4 CRI14 97.7  
CRI07 85.8 CRI15 75.9  
CRI08 64.6 CRI16 73.5  
ResultsCRI 83.7



PlanckDistance 2.0E-005

## 4.1 Integrating Sphere Test

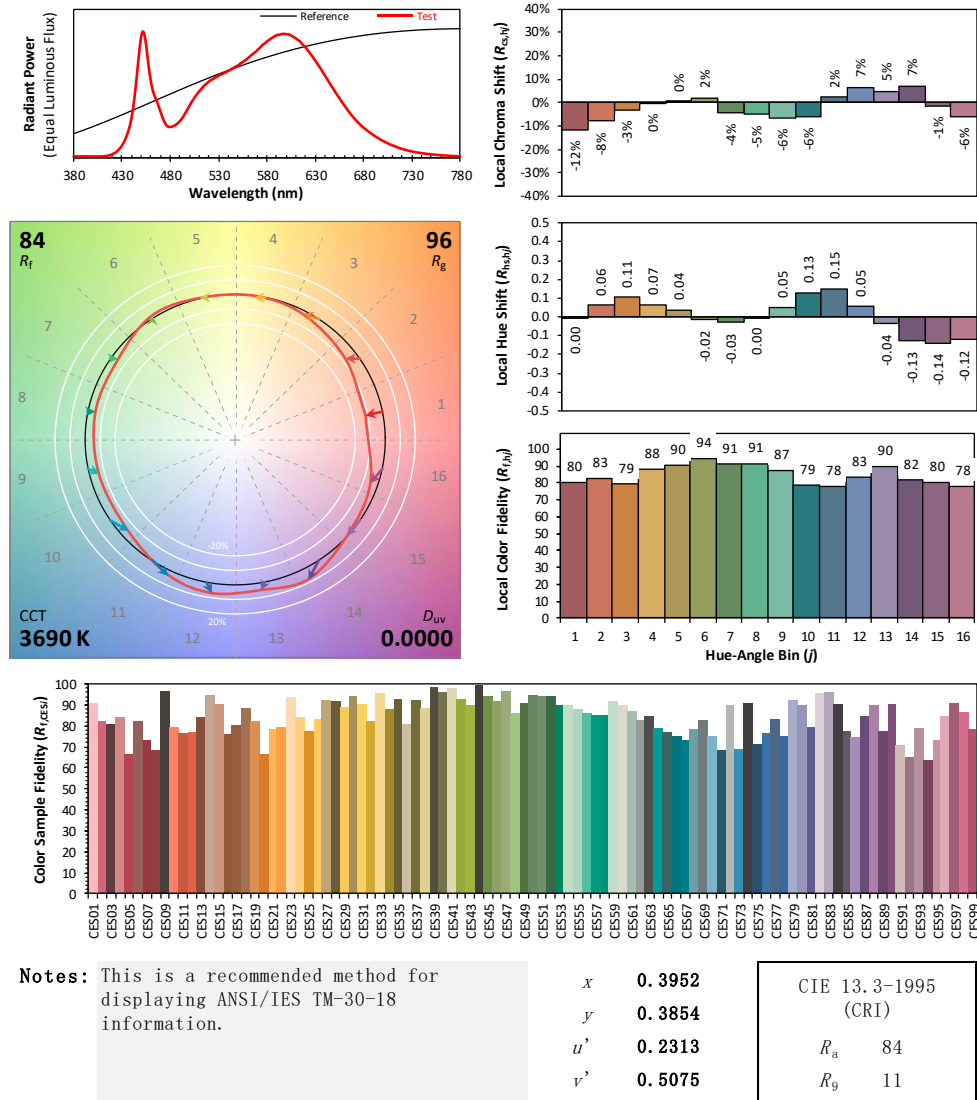
### IES TM-30-18 Color Rendition Report

Source: DLF2207110-6a

Manufacturer: RAB Lighting Inc.

Date: 2022/7/30

Model: TOMO-2/18W/3500K



Colors are for visual orientation purposes only. Created with the ANSI/IES TM-30-18 Calculator Version 2.0

## 4.0 LM-79 Measurement and Test Results

### 4.2 Goniophotometer Test

Model No.	TOMO-2/18W/3500K	Sample ID.	F1
Operate time (Min.)	90	Stabilization time (Min.)	45
Temperature (°C)	25.3	Humidity (%RH)	54.0

#### Test Method

The samples were tested according to the IES LM-79-2008.

Photometric parameters were measured using a type C goniophotometer and software.

The ambient temperature shall be maintained at  $25^{\circ}\text{C} \pm 1^{\circ}\text{C}$ , measured at a point not more than 1 m from the sample and at the same height as the sample.

The voltage of an AC power supply (RMS voltage) or DC power supply (instantaneous voltage) applied to the device under test shall be regulated to within  $\pm 0.2$  percent under load.

The samples were operated at rated voltage and was stabilized before measurement. Luminous flux, luminaire efficacy, zonal lumen were calculated from the software taken at  $0.5^{\circ}$  vertical intervals and  $10^{\circ}$  horizontal intervals.

#### Test Conditions

Condition	Voltage (Vac)	Frequency (Hz)	Current (A)	Power (W)	Power Factor
WROST CASE	276.91	60	0.067	18.1	0.973
NON-WROST CASE	120.08	60	0.147	17.6	0.997

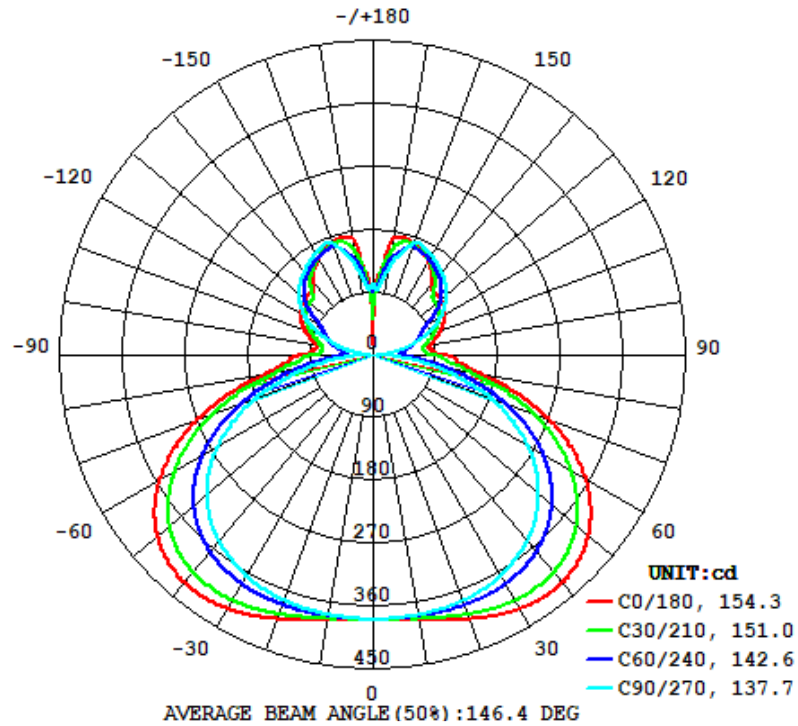
#### Test Result

Flux (lm)	Field Angle(10%)		Beam Angle(50%)		Luminous Efficacy (lm/W)
	C0-180	C90-270	C0-180	C90-270	
2375	358.1	360.0	154.3	137.7	131.2

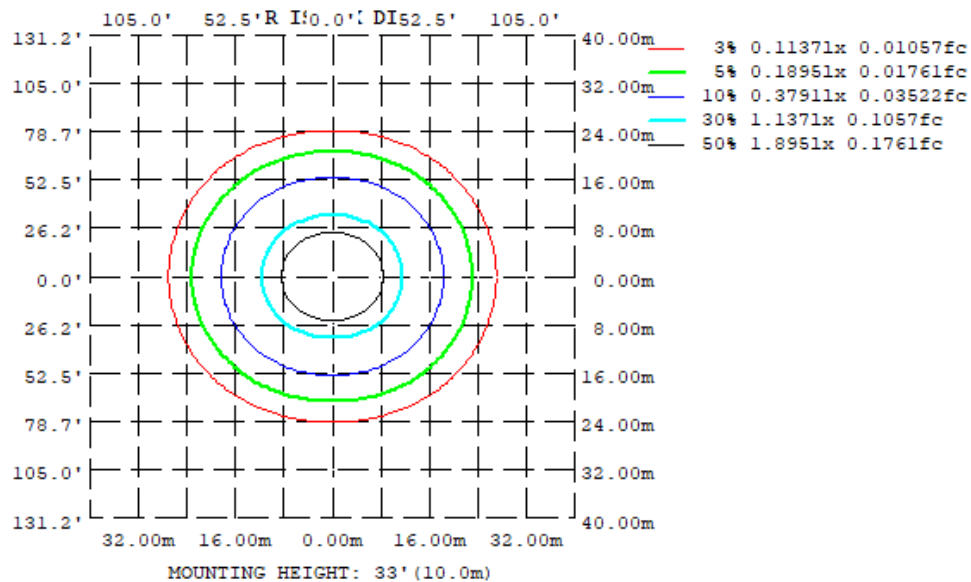
Zonal Lumen Requirement ( $0^{\circ}$ - $60^{\circ}$ )	UGR (X=4H, Y=8H, 70/50/20%)	Length(ft)	Lumen/ft
48.85%	23.5	2.00	1188

## 4.2 Goniophotometer Test

### Light Distrubtion Curve



### Isolux Plot





## 4.2 Goniophotometer Test

### Zonal Lumen Summary

$\gamma$	C0	C45	C90	C135	C180	C225	C270	C315
10	385.9	381.5	378.3	381.5	385.9	381.5	378.3	381.5
20	402.4	388.3	374.5	388.3	402.4	388.3	374.5	388.3
30	419.4	392.4	365.3	392.4	419.4	392.4	365.3	392.4
40	423.9	385.9	346.3	385.9	423.9	385.9	346.3	385.9
50	404.3	359.4	312.0	359.4	404.3	359.4	312.0	359.4
60	353.6	305.5	257.3	305.5	353.6	305.5	257.3	305.5
70	268.5	224.1	179.2	224.1	268.5	224.1	179.2	224.1
80	157.1	126.9	83.64	126.9	157.1	126.9	83.64	126.9
90	102.8	65.96	6.183	65.96	102.8	65.96	6.183	65.96
100	82.24	63.62	30.68	63.62	82.24	63.62	30.68	63.62
110	104.6	82.97	75.71	82.97	104.6	82.97	75.71	82.97
120	121.5	100.7	114.7	100.7	121.5	100.7	114.7	100.7
130	127.8	114.3	139.4	114.3	127.8	114.3	139.4	114.3
140	133.4	145.7	155.5	145.7	133.4	145.7	155.5	145.7
150	159.5	161.7	168.0	161.7	159.5	161.7	168.0	161.7
160	172.9	170.1	170.5	170.1	172.9	170.1	170.5	170.1
170	170.1	142.2	124.8	142.2	170.1	142.2	124.8	142.2
180	17.79	81.82	103.9	81.82	17.79	81.82	103.9	81.82
DEG	LUMINOUS INTENSITY:cd							

### UGR Table - Corrected

#### UGR Table - Corrected

Reflectances											
Ceiling Cavity	70	70	50	50	30	70	70	50	50	30	
Walls	50	30	50	30	30	50	30	50	30	30	
Floor Cavity	20	20	20	20	20	20	20	20	20	20	
Room Size											
X=2H Y=2H	UGR Viewed Crosswise					UGR Viewed Endwise					
	15.6	16.8	16.3	17.6	18.5	17.2	18.4	18.0	19.2	20.1	
3H	17.7	18.8	18.5	19.6	20.6	19.8	20.9	20.5	21.6	22.6	
4H	18.6	19.6	19.3	20.4	21.3	20.8	21.9	21.6	22.7	23.6	
6H	19.2	20.2	20.0	20.9	21.9	21.8	22.8	22.6	23.5	24.5	
8H	19.4	20.3	20.2	21.1	22.1	22.3	23.2	23.0	24.0	25.0	
12H	19.5	20.4	20.3	21.2	22.2	22.8	23.7	23.6	24.5	25.5	
4H 2H	16.6	17.7	17.4	18.4	19.4	17.8	18.9	18.6	19.6	20.6	
3H	18.9	19.8	19.7	20.6	21.6	20.6	21.5	21.4	22.3	23.3	
4H	19.9	20.7	20.6	21.5	22.5	21.8	22.6	22.6	23.5	24.5	
6H	20.6	21.3	21.4	22.2	23.2	23.0	23.7	23.8	24.5	25.5	
8H	20.9	21.5	21.7	22.4	23.4	23.5	24.2	24.3	25.0	26.1	
12H	21.0	21.6	21.9	22.5	23.5	24.2	24.8	25.0	25.7	26.7	
8H 4H	20.5	21.2	21.3	22.0	23.0	22.1	22.8	23.0	23.6	24.7	
6H	21.4	22.0	22.3	22.9	23.9	23.5	24.1	24.3	24.9	25.9	
8H	21.8	22.3	22.6	23.2	24.2	24.2	24.7	25.1	25.6	26.6	
12H	22.0	22.5	22.9	23.3	24.4	25.1	25.5	25.9	26.4	27.5	
12H 4H	20.6	21.2	21.5	22.1	23.1	22.2	22.8	23.0	23.6	24.7	
6H	21.7	22.2	22.5	23.0	24.1	23.6	24.1	24.4	24.9	26.0	
8H	22.1	22.6	22.9	23.4	24.5	24.4	24.8	25.2	25.7	26.8	

Maximum UGR = 27.5

## 4.2 Goniophotometer Test

### ZONAL LUMEN SUMMARY

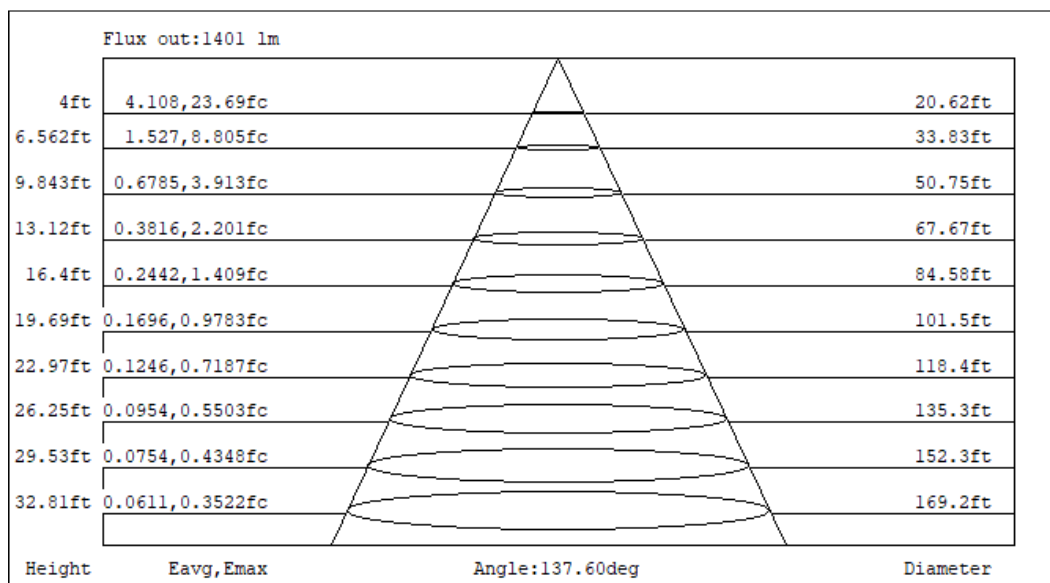
	Zonal (lm)		Total (lm)	Percent
0-10	36.27	0 - 10	36.27	1.53%
10-20	109.18	0 - 20	145.45	6.12%
20-30	180.95	0 - 30	326.40	13.74%
30-40	244.98	0 - 40	571.38	24.06%
40-50	289.35	0 - 50	860.73	36.24%
50-60	299.56	0 - 60	1160.29	48.85%
60-70	264.48	0 - 70	1424.77	59.98%
70-80	183.28	0 - 80	1608.05	67.70%
80-90	94.60	0 - 90	1702.65	71.68%
90-100	61.92	0 - 100	1764.57	74.29%
100-110	75.11	0 - 110	1839.68	77.45%
110-120	95.91	0 - 120	1935.59	81.49%
120-130	105.51	0 - 130	2041.10	85.93%
130-140	103.98	0 - 140	2145.08	90.31%
140-150	96.18	0 - 150	2241.26	94.36%
150-160	76.73	0 - 160	2317.99	97.59%
160-170	45.85	0 - 170	2363.84	99.52%
170-180	11.43	0 - 180	2375.27	100.00%

## 4.2 Goniophotometer Test

### COEFFICIENTS OF UTILIZATION - ZONAL CAVITY METHOD

RC	80				70				50			30			10			0
Rw	70	50	30	10	70	50	30	10	50	30	10	50	30	10	50	30	10	0
0	112	112	112	112	106	106	106	106	95	95	95	85	85	85	76	76	76	72
1	101	95	90	86	95	90	86	82	81	77	74	72	69	67	64	62	60	56
2	90	82	74	68	85	77	71	65	69	64	59	62	57	54	55	51	48	45
3	82	71	62	55	77	67	59	53	60	54	48	53	48	44	47	43	40	36
4	74	62	53	46	70	59	50	44	52	46	40	47	41	37	41	37	33	30
5	68	55	45	39	64	52	43	37	46	39	34	41	36	31	37	32	28	25
6	62	49	40	33	58	46	38	32	42	34	29	37	31	27	33	28	24	22
7	57	44	35	29	54	42	33	28	37	30	25	34	28	23	30	25	21	19
8	53	40	31	25	50	38	30	24	34	27	22	31	25	21	27	22	19	16
9	49	36	28	22	47	34	27	21	31	24	20	28	22	18	25	20	17	15
10	46	33	25	20	44	31	24	19	29	22	18	26	20	16	23	18	15	13

### CONE OF LIGHT DIAGRAM



## 4.0 LM-79 Measurement and Test Results

### 4.3 THD and PF Test

Model No.	TOMO-2/18W/3500K	Sample ID.	F1
Temperature (°C)	25.3	Humidity (%RH)	56.0

#### Test Method

The samples were tested according to the ANSI C82.77:2002.

The total harmonic distortion shall be measured to the 40th order.

The ambient temperature condition was maintained at  $25^{\circ}\text{C} \pm 1^{\circ}\text{C}$ . The sample measurements were made using a digital power meter and power supply. The sample was operated at rated voltage and was stabilized before measurement. The total harmonic distortion were calculated.

#### Test Results

Voltage (Vac)	Frequency (Hz)	Current (A)	Power (W)	Power Factor	THD
120.01	60	0.146	17.5	0.998	6.00%
276.99	60	0.066	17.9	0.975	8.47%

## 5.0 Equipment Information

Test Equipment			
Equipment ID	Equipment Name	Last Calibration Date	Calibration Due Date
DLF107	Integrating Sphere System	2021/12/26	2022/12/25
DLF108	Auxiliary Lamp	2021/12/26	2022/12/25
DLF122	Measurement Standard Lamp Standard Lamp Type: 220 V, 0.4720 A, Tungsten, Omni-derectional	2021/12/26	2022/12/25
DLF116	AC Power Source	2021/12/26	2022/12/25
DLF113	Power Meter	2021/12/26	2022/12/25
DLF112	Temperature Recorder	2021/12/26	2022/12/25
DLF114	Temperature & Humidity Datalogger	2021/12/26	2022/12/25
DLF101	Goniophotometer	2021/12/26	2022/12/25
DLF125	Standard Lamp Standard Lamp Type: 76.58 V, 6.7875 A, Tungsten, Omni-derectional	2021/12/26	2022/12/25
DLF104	AC Power Source	2021/12/26	2022/12/25
DLF507	DC Power Source	2021/12/26	2022/12/25
DLF102	Power Meter	2021/12/26	2022/12/25
DLF111	Temperature & Humidity Datalogger	2021/12/26	2022/12/25
DLF119	Power Meter	2021/12/26	2022/12/25
DLF031	Temperature data logger	2021/12/26	2022/12/25
DLF022	Digital power meter	2021/12/26	2022/12/25
DLF003	Temperature & Humidity Datalogger	2021/12/26	2022/12/25

\*\*\*\*\* End of Test Report\*\*\*\*\*