

Photometric Test Report

Relevant Standards

- ☒ IES LM-79-2008
- ☒ ANSI C82.77:2017

Prepared For

RAB Lighting Inc.

Room 6A33, No.1388, Wuzhong road, Shanghai, China

Xiao Xiang, 15921313292, Gary.Xiao@rabweb.com

Prepared By

Deliver Co., Ltd.

Block 11, 78 Keling Road, SSTP, Suzhou, China

0512-66801950, kevin.jia@szdeliver.com

Project Number

DLF2207110

Report Number

DLF2207110-12a

Test Date

2022/7/30

Issue Date

2022/7/31

Prepared By



Wangzun Zhu

Approved By



Kevin Jia

The results contained in this report pertain only to the tested sample.

This report shall not be reproduced, except in full, without written approval of Deliver Co., Ltd.

This report must not be used by the client to claim product certification, approval, or endorsement by NVLAP.

1.0 Test Summary

DLC Technical Requirements v5.1

Indoor - Linear Ambient - Direct Linear Ambient Luminaires				
Requirement Category	Test Method	Requirements		Test value
Luminaire Output (lm) (Goniophotometer - Section 4.2)	IES LM-79-2008	1500		3332
Lumen/ft (Goniophotometer - Section 4.2)	IES LM-79-2008	≥375		1666
Minimum Luminaire Efficacy (lm/W) (Goniophotometer - Section 4.2)	IES LM-79-2008	Standard 115	Premium 130	135.4
Power (Input Wattage) (W) (Goniophotometer - Section 4.2)	IES LM-79-2008	Wrost Case		24.6
Total Harmonic Distortion (A%) (THD & PF - section 4.3)	ANSI C82.77:2014	20.00%	120V	7.35%
		20.00%	277V	10.02%
Power Factor (THD & PF - section 4.3)	ANSI C82.77:2014	0.9	120V	0.997
		0.9	277V	0.990
Allowable CCTs* (K) (Integrating Sphere - Section 4.1)	IES LM-79-2008	7 step	5029±355	5134
		4 step	5029±220	
Minimum CRI (Integrating Sphere - Section 4.1)	IES LM-79-2008 CIE 13.3-1995	≥80		81
Minimum R9 (Integrating Sphere - Section 4.1)	IES LM-79-2008 CIE 13.3-1995	≥0		-3
Minimum Rf (Integrating Sphere - Section 4.1)	ANSI/IES TM-30-18	≥70		82
Minimum Rg (Integrating Sphere - Section 4.1)	ANSI/IES TM-30-18	≥89		94
Minimum IES Rcs,h1 (Integrating Sphere - Section 4.1)	ANSI/IES TM-30-18	-12%≤IES Rcs,h1≤+23%		-14%
Zonal Lumen Requirement (0°-60°) (Goniophotometer - Section 4.2)	IES LM-79-2008	≥40%		48.88%
Corrected UGR (X=4H, Y=8H, 70/50/20%) (Goniophotometer - Section 4.2)	CIE 190-2010	<22		24.8
Input Voltage (V)				
(Goniophotometer - Section 4.2)	IES LM-79-2008	Wrost Case		120
(Goniophotometer - Section 4.2)		Non-Wrost Case		277
Input Current (A)				
(Goniophotometer - Section 4.2)	IES LM-79-2008	Wrost Case		0.206
(Goniophotometer - Section 4.2)		Non-Wrost Case		0.088
Power (Input Wattage - W)				
(Goniophotometer - Section 4.2)	IES LM-79-2008	Wrost Case		24.6
(Goniophotometer - Section 4.2)		Non-Wrost Case		24.2

2.0 Test List

Test Item	Test	Test Date	Model Number	Sample No.
1	Integrating Sphere Test	2022/7/30	TOMO-2/24W/5000K	L1
2	Goniophotometer Test	2022/7/30	TOMO-2/24W/5000K	L1
3	THD and PF Test	2022/7/30	TOMO-2/24W/5000K	L1

Remark(If any)

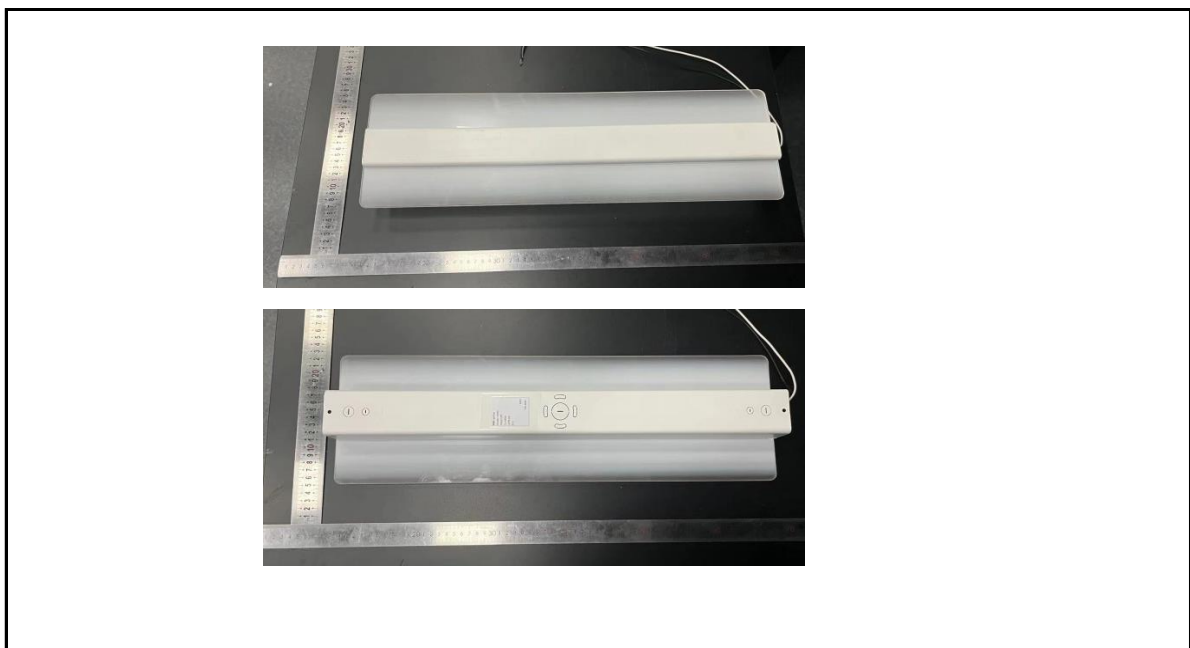
- 1、 This report shall not be used by the client to claim product endorsement by NVLAP, NIST or any agency of the US government.
- 2、 The results reported herein have been performed in accordance with the laboratory's terms of accreditation. This report shall not be reproduced except in full without the written approval of the Laboratory. The results in this report apply to the test sample(s) mentioned above at the time of the testing period only and are not to be used to indicate applicability to other similar products. This report does not imply that the product(s) has met the criteria for certification.

3.0 Production Description

Luminaire Description: TOMO-2/24W/5000K

Electrical Specification: 120V-277V,50/60HZ

Photos of Luminaire Characteristics



4.0 LM-79 Measurement and Test Results

4.1 Integrating Sphere Test

Model No.	TOMO-2/24W/5000K	Sample ID.	L1
Operate time (Min.)	90	Stabilization time (Min.)	45
Temperature (°C)	25.3	Humidity (%RH)	56.0

Test Method

The samples were tested according to the IES LM-79-2008.

Photometric parameters were measured using an integrating sphere, a spectroradiometer and software. The ambient temperature condition inside the sphere was maintained at $25^{\circ}\text{C} \pm 1^{\circ}\text{C}$.

The sample measurements were made using a spectroradiometer connected by a fiber optic cable and detector through the detector port of the integrating sphere.

The voltage of an AC power supply (RMS voltage) or DC power supply (instantaneous voltage) applied to the device under test shall be regulated to within ± 0.2 percent under load.

The sample was measured using 4π geometry and operated at rated voltage and was stabilized before measurement. Chromaticity coordinates, correlated color temperature and color rendering index were calculated from the spectral radiant flux measurements taken at 1 nm intervals over the range of 380 to 780 nm.

Test Result

Voltage (Vac)	Frequency (Hz)	Current (A)	Power (W)	Power Factor
120.02	60	0.204	24.5	0.997
277.04	60	0.088	24.0	0.990

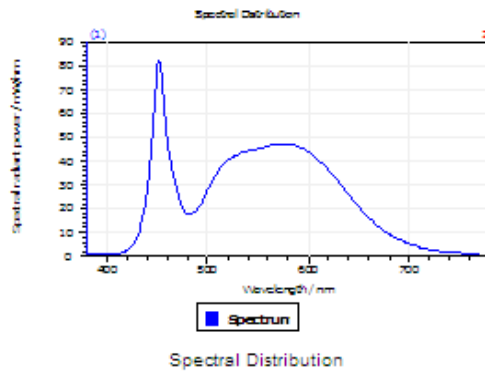
Test Result

CCT (K)	CRI	R9	Duv
5134	81	-3	0.006

Rf	Rg	IES Rcs,h1
82	94	-14%

4.1 Integrating Sphere Test

Results



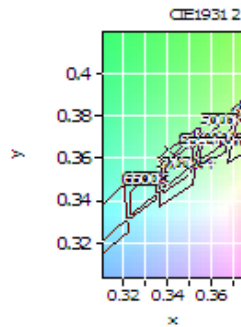
Spectral values

DominantWavelength 565.71 nm
Purity 0.112
PeakWavelength 451.85 nm
Radiant Power 9.161 W
Width50%:

Color Coordinates

Correlated Color Temperat 5134 K
x: 0.3423 u: 0.2058 u': 0.2058
y: 0.3614 v: 0.3260 v': 0.4890

CRI01	78.1	CRI09	-2.8
CRI02	86.2	CRI10	67.3
CRI03	92.0	CRI11	78.3
CRI04	79.7	CRI12	55.4
CRI05	78.5	CRI13	80.2
CRI06	80.8	CRI14	95.8
CRI07	86.5	CRI15	71.4
CRI08	64.2	CRI16	70.0
ResultsCRI	80.7		



PlanckDistance 6.0E-003

4.1 Integrating Sphere Test

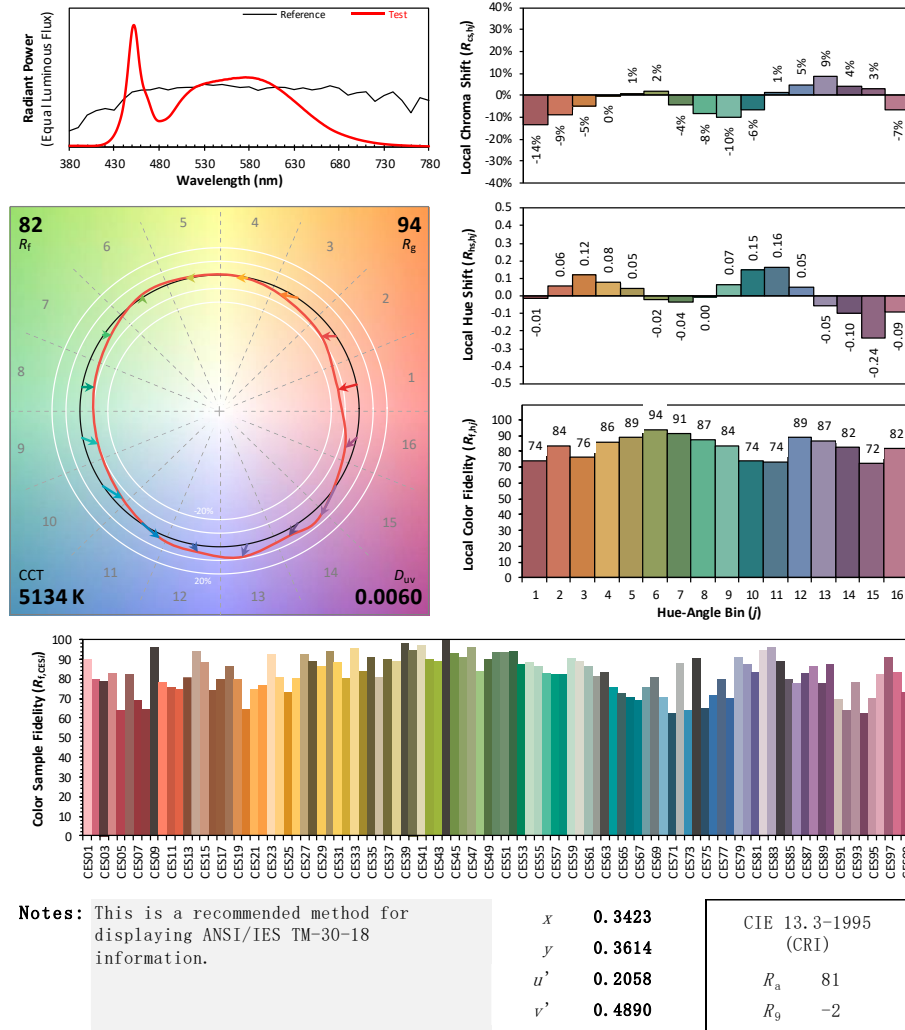
IES TM-30-18 Color Rendition Report

Source: DLF2207110-12a

Manufacturer: RAB Lighting Inc.

Date: 2022/7/30

Model: TOMO-2/24W/5000K



Colors are for visual orientation purposes only. Created with the ANSI/IES TM-30-18 Calculator Version 2.0

4.0 LM-79 Measurement and Test Results

4.2 Goniophotometer Test

Model No.	TOMO-2/24W/5000K	Sample ID.	L1
Operate time (Min.)	90	Stabilization time (Min.)	45
Temperature (°C)	25.3	Humidity (%RH)	54.0

Test Method

The samples were tested according to the IES LM-79-2008.

Photometric parameters were measured using a type C goniophotometer and software.

The ambient temperature shall be maintained at $25^{\circ}\text{C} \pm 1^{\circ}\text{C}$, measured at a point not more than 1 m from the sample and at the same height as the sample.

The voltage of an AC power supply (RMS voltage) or DC power supply (instantaneous voltage) applied to the device under test shall be regulated to within ± 0.2 percent under load.

The samples were operated at rated voltage and was stabilized before measurement. Luminous flux, luminaire efficacy, zonal lumen were calculated from the software taken at 0.5° vertical intervals and 10° horizontal intervals.

Test Conditions

Condition	Voltage (Vac)	Frequency (Hz)	Current (A)	Power (W)	Power Factor
WROST CASE	120.02	60	0.206	24.6	0.996
NON-WROST CASE	277.02	60	0.088	24.2	0.991

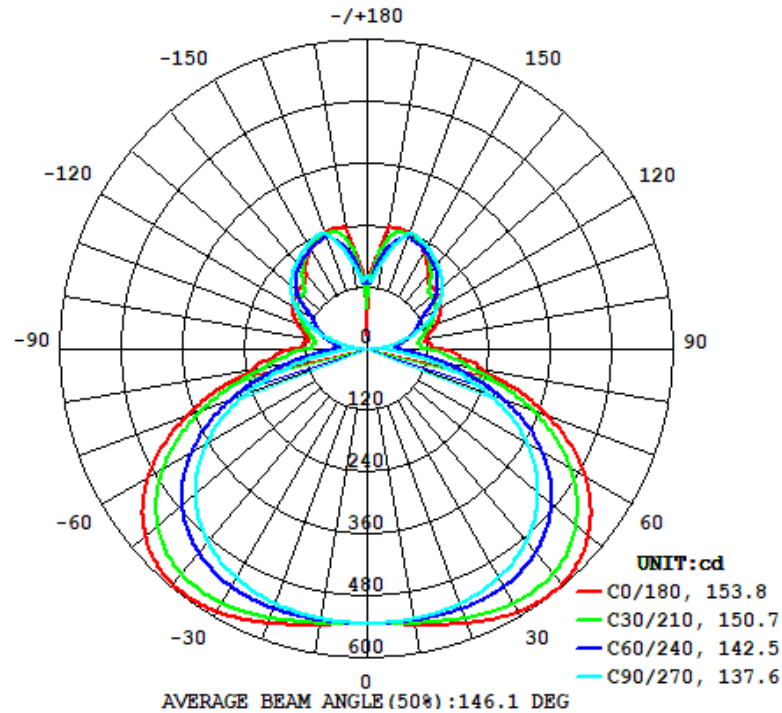
Test Result

Flux (lm)	Field Angle(10%)		Beam Angle(50%)		Luminous Efficacy (lm/W)
	C0-180	C90-270	C0-180	C90-270	
3332	358.2	360.0	153.8	137.6	135.4

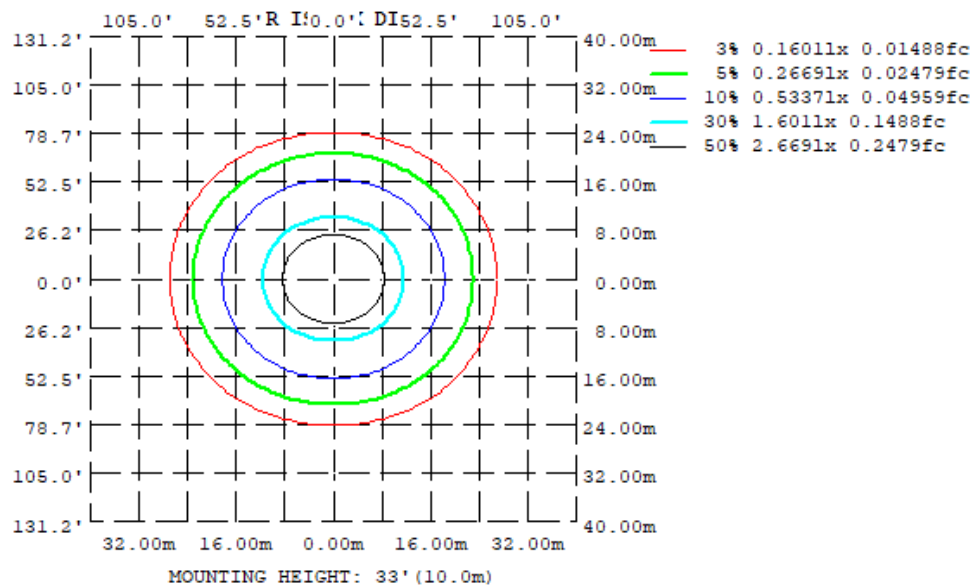
Zonal Lumen Requirement (0° - 60°)	UGR (X=4H, Y=8H, 70/50/20%)	Length(ft)	Lumen/ft
48.88%	24.8	2.00	1666

4.2 Goniophotometer Test

Light Distrubtion Curve



Isolux Plot



4.2 Goniophotometer Test

Zonal Lumen Summary

γ	C0	C45	C90	C135	C180	C225	C270	C315
10	543.7	536.7	531.6	536.7	543.7	536.7	531.6	536.7
20	566.7	545.9	526.3	545.9	566.7	545.9	526.3	545.9
30	589.2	551.5	513.2	551.5	589.2	551.5	513.2	551.5
40	594.8	541.4	486.6	541.4	594.8	541.4	486.6	541.4
50	565.7	503.7	438.3	503.7	565.7	503.7	438.3	503.7
60	493.3	427.5	361.4	427.5	493.3	427.5	361.4	427.5
70	373.7	313.1	251.5	313.1	373.7	313.1	251.5	313.1
80	226.9	181.1	117.0	181.1	226.9	181.1	117.0	181.1
90	138.5	89.81	8.156	89.81	138.5	89.81	8.156	89.81
100	118.3	89.02	43.61	89.02	118.3	89.02	43.61	89.02
110	145.6	115.9	106.6	115.9	145.6	115.9	106.6	115.9
120	169.0	140.4	160.7	140.4	169.0	140.4	160.7	140.4
130	178.4	162.4	194.5	162.4	178.4	162.4	194.5	162.4
140	186.9	204.0	216.9	204.0	186.9	204.0	216.9	204.0
150	223.9	226.3	234.0	226.3	223.9	226.3	234.0	226.3
160	241.5	237.5	237.3	237.5	241.5	237.5	237.3	237.5
170	238.5	198.1	173.7	198.1	238.5	198.1	173.7	198.1
180	28.31	112.3	144.2	112.3	28.31	112.3	144.2	112.3
DEG	LUMINOUS INTENSITY:cd							

UGR Table - Corrected

UGR Table - Corrected

Reflectances											
Ceiling Cavity	70	70	50	50	30	70	70	50	50	30	
Walls	50	30	50	30	30	50	30	50	30	30	
Floor Cavity	20	20	20	20	20	20	20	20	20	20	
Room Size											
X=2H Y=2H	16.8	18.0	17.5	18.8	19.7	18.4	19.6	19.1	20.4	21.3	
3H	18.9	20.0	19.7	20.8	21.8	20.9	22.0	21.6	22.8	23.7	
4H	19.8	20.8	20.5	21.6	22.5	22.0	23.0	22.7	23.8	24.8	
6H	20.4	21.4	21.2	22.1	23.1	23.0	23.9	23.7	24.7	25.7	
8H	20.6	21.5	21.4	22.3	23.3	23.5	24.4	24.3	25.2	26.2	
12H	20.7	21.6	21.5	22.4	23.4	24.1	24.9	24.8	25.8	26.8	
4H 2H	17.8	18.9	18.6	19.6	20.6	19.0	20.0	19.8	20.8	21.8	
3H	20.1	21.0	20.9	21.8	22.8	21.7	22.6	22.5	23.4	24.4	
4H	21.1	21.9	21.8	22.7	23.7	23.0	23.8	23.8	24.6	25.6	
6H	21.8	22.5	22.6	23.4	24.4	24.1	24.9	25.0	25.7	26.7	
8H	22.1	22.7	22.9	23.6	24.6	24.8	25.5	25.6	26.3	27.3	
12H	22.2	22.8	23.1	23.7	24.7	25.5	26.1	26.3	27.0	28.0	
8H 4H	21.7	22.4	22.5	23.2	24.2	23.3	24.0	24.1	24.8	25.8	
6H	22.6	23.2	23.5	24.1	25.1	24.7	25.3	25.5	26.1	27.1	
8H	23.0	23.5	23.8	24.4	25.4	25.5	26.0	26.4	26.9	27.9	
12H	23.2	23.7	24.1	24.6	25.6	26.4	26.9	27.3	27.7	28.8	
12H 4H	21.8	22.4	22.7	23.3	24.3	23.3	23.9	24.2	24.8	25.8	
6H	22.9	23.4	23.7	24.2	25.3	24.8	25.3	25.6	26.1	27.2	
8H	23.3	23.8	24.2	24.6	25.7	25.7	26.1	26.5	27.0	28.1	

Maximum UGR = 28.8

4.2 Goniophotometer Test

ZONAL LUMEN SUMMARY

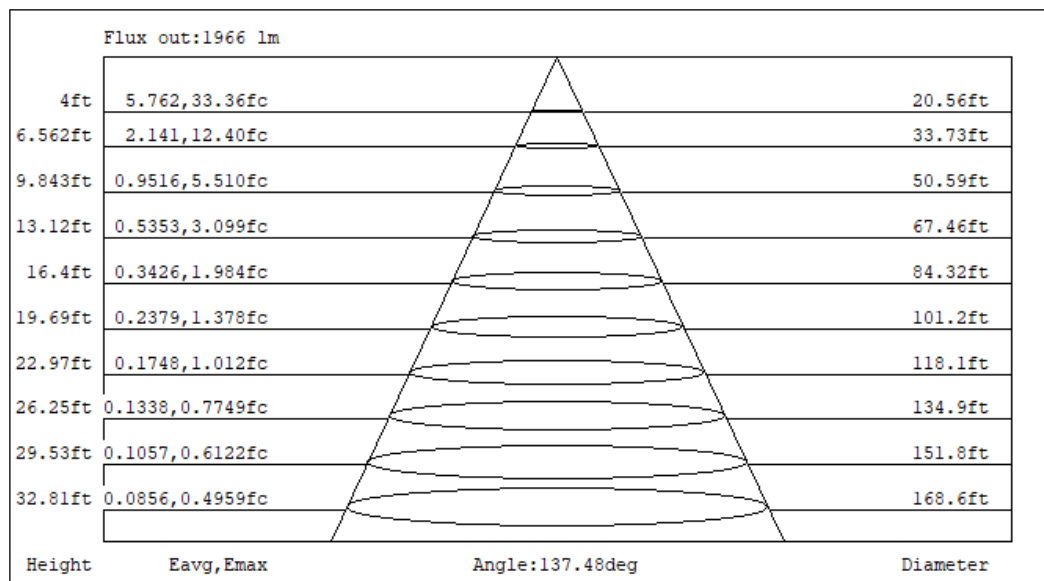
	Zonal (lm)		Total (lm)	Percent
0-10	51.07	0 - 10	51.07	1.53%
10-20	153.64	0 - 20	204.71	6.14%
20-30	254.41	0 - 30	459.12	13.78%
30-40	344.04	0 - 40	803.16	24.11%
40-50	405.79	0 - 50	1208.95	36.29%
50-60	419.57	0 - 60	1628.52	48.88%
60-70	369.78	0 - 70	1998.30	59.98%
70-80	256.46	0 - 80	2254.76	67.68%
80-90	136.57	0 - 90	2391.33	71.78%
90-100	86.53	0 - 100	2477.86	74.38%
100-110	105.12	0 - 110	2582.98	77.53%
110-120	133.88	0 - 120	2716.86	81.55%
120-130	147.33	0 - 130	2864.19	85.97%
130-140	145.50	0 - 140	3009.69	90.34%
140-150	134.56	0 - 150	3144.25	94.38%
150-160	107.20	0 - 160	3251.45	97.60%
160-170	64.10	0 - 170	3315.55	99.52%
170-180	15.96	0 - 180	3331.51	100.00%

4.2 Goniophotometer Test

COEFFICIENTS OF UTILIZATION - ZONAL CAVITY METHOD

RC	80				70				50			30			10			0
Rw	70	50	30	10	70	50	30	10	50	30	10	50	30	10	50	30	10	0
0	112	112	112	112	106	106	106	106	95	95	95	85	85	85	76	76	76	72
1	101	95	90	86	95	90	86	82	81	77	74	72	69	67	64	62	60	56
2	90	82	74	68	85	77	71	65	69	64	59	62	57	54	55	51	48	45
3	82	71	62	55	77	67	59	53	60	54	48	53	48	44	47	43	40	36
4	74	62	53	46	70	59	50	44	52	46	40	47	41	37	42	37	33	30
5	68	55	45	39	64	52	43	37	46	39	34	42	36	31	37	32	28	25
6	62	49	40	33	58	46	38	32	42	34	29	37	31	27	33	28	24	22
7	57	44	35	29	54	42	33	28	37	30	25	34	28	23	30	25	21	19
8	53	40	31	25	50	38	30	24	34	27	22	31	25	21	27	22	19	17
9	49	36	28	22	47	34	27	21	31	24	20	28	22	18	25	20	17	15
10	46	33	25	20	44	31	24	19	29	22	18	26	20	16	23	18	15	13

CONE OF LIGHT DIAGRAM



4.0 LM-79 Measurement and Test Results

4.3 THD and PF Test

Model No.	TOMO-2/24W/5000K	Sample ID.	L1
Temperature (°C)	25.3	Humidity (%RH)	56.0

Test Method

The samples were tested according to the ANSI C82.77:2002.

The total harmonic distortion shall be measured to the 40th order.

The ambient temperature condition was maintained at $25^{\circ}\text{C} \pm 1^{\circ}\text{C}$. The sample measurements were made using a digital power meter and power supply. The sample was operated at rated voltage and was stabilized before measurement. The total harmonic distortion were calculated.

Test Results

Voltage (Vac)	Frequency (Hz)	Current (A)	Power (W)	Power Factor	THD
120.02	60	0.204	24.5	0.997	7.35%
277.04	60	0.088	24.0	0.990	10.02%

5.0 Equipment Information

Test Equipment			
Equipment ID	Equipment Name	Last Calibration Date	Calibration Due Date
DLF107	Integrating Sphere System	2021/12/26	2022/12/25
DLF108	Auxiliary Lamp	2021/12/26	2022/12/25
DLF122	Measurement Standard Lamp Standard Lamp Type: 220 V, 0.4720 A, Tungsten, Omni-derectional	2021/12/26	2022/12/25
DLF116	AC Power Source	2021/12/26	2022/12/25
DLF113	Power Meter	2021/12/26	2022/12/25
DLF112	Temperature Recorder	2021/12/26	2022/12/25
DLF114	Temperature & Humidity Datalogger	2021/12/26	2022/12/25
DLF101	Goniophotometer	2021/12/26	2022/12/25
DLF125	Standard Lamp Standard Lamp Type: 76.58 V, 6.7875 A, Tungsten, Omni-derectional	2021/12/26	2022/12/25
DLF104	AC Power Source	2021/12/26	2022/12/25
DLF507	DC Power Source	2021/12/26	2022/12/25
DLF102	Power Meter	2021/12/26	2022/12/25
DLF111	Temperature & Humidity Datalogger	2021/12/26	2022/12/25
DLF119	Power Meter	2021/12/26	2022/12/25
DLF031	Temperature data logger	2021/12/26	2022/12/25
DLF022	Digital power meter	2021/12/26	2022/12/25
DLF003	Temperature & Humidity Datalogger	2021/12/26	2022/12/25

***** End of Test Report*****