

# Photometric Test Report

## Relevant Standards

- ☒ IES LM-79-2008
- ☒ ANSI C82.77:2017

## Prepared For

**RAB Lighting Inc.**

Room 6A33, No.1388, Wuzhong road, Shanghai, China

Xiao Xiang, 15921313292, Gary.Xiao@rabweb.com

## Prepared By

**Deliver Co., Ltd.**

Block 11, 78 Keling Road, SSTP, Suzhou, China

0512-66801950, kevin.jia@szdeliver.com

## Project Number

**DLF2207103**

## Report Number

**DLF2207103-12a**

## Test Date

**2022/7/11**

## Issue Date

**2022/7/15**

## Prepared By



Wangzun Zhu

## Approved By



Kevin Jia

The results contained in this report pertain only to the tested sample.

This report shall not be reproduced, except in full, without written approval of Deliver Co., Ltd.

This report must not be used by the client to claim product certification, approval, or endorsement by NVLAP.

## 1.0 Test Summary

DLC Technical Requirements v5.1

Indoor - Linear Ambient - Direct Linear Ambient Luminaires				
Requirement Category	Test Method	Requirements		Test value
Luminaire Output (lm) (Goniophotometer - Section 4.2)	IES LM-79-2008	1500		6603
Lumen/ft (Goniophotometer - Section 4.2)	IES LM-79-2008	≥375		1651
Minimum Luminaire Efficacy (lm/W) (Goniophotometer - Section 4.2)	IES LM-79-2008	Standard 115	Premium 130	135.9
Power (Input Wattage) (W) (Goniophotometer - Section 4.2)	IES LM-79-2008	Wrost Case		48.6
Total Harmonic Distortion (A%) (THD & PF - section 4.3)	ANSI C82.77:2014	20.00%	120V	6.94%
		20.00%	277V	11.50%
Power Factor (THD & PF - section 4.3)	ANSI C82.77:2014	0.9	120V	0.996
		0.9	277V	0.990
Allowable CCTs* (K) (Integrating Sphere - Section 4.1)	IES LM-79-2008	7 step	5029±355	5143
		4 step	5029±220	
Minimum CRI (Integrating Sphere - Section 4.1)	IES LM-79-2008 CIE 13.3-1995	≥80		82
Minimum R9 (Integrating Sphere - Section 4.1)	IES LM-79-2008 CIE 13.3-1995	≥0		2
Minimum Rf (Integrating Sphere - Section 4.1)	ANSI/IES TM-30-18	≥70		83
Minimum Rg (Integrating Sphere - Section 4.1)	ANSI/IES TM-30-18	≥89		95
Minimum IES Rcs,h1 (Integrating Sphere - Section 4.1)	ANSI/IES TM-30-18	-12%≤IES Rcs,h1≤+23%		-13%
Zonal Lumen Requirement (0°-60°) (Goniophotometer - Section 4.2)	IES LM-79-2008	≥40%		47.99%
Corrected UGR (X=4H, Y=8H, 70/50/20%) (Goniophotometer - Section 4.2)	CIE 190-2010	<22		24.1
Input Voltage (V)				
(Goniophotometer - Section 4.2)	IES LM-79-2008	Wrost Case		120
(Goniophotometer - Section 4.2)		Non-Wrost Case		277
Input Current (A)				
(Goniophotometer - Section 4.2)	IES LM-79-2008	Wrost Case		0.406
(Goniophotometer - Section 4.2)		Non-Wrost Case		0.175
Power (Input Wattage - W)				
(Goniophotometer - Section 4.2)	IES LM-79-2008	Wrost Case		48.6
(Goniophotometer - Section 4.2)		Non-Wrost Case		48.0

## 2.0 Test List

Test Item	Test	Test Date	Model Number	Sample No.
1	Integrating Sphere Test	2022/7/11	TOMO-4/48W/5000K	L1
2	Goniophotometer Test	2022/7/11	TOMO-4/48W/5000K	L1
3	THD and PF Test	2022/7/11	TOMO-4/48W/5000K	L1

### Remark(If any)

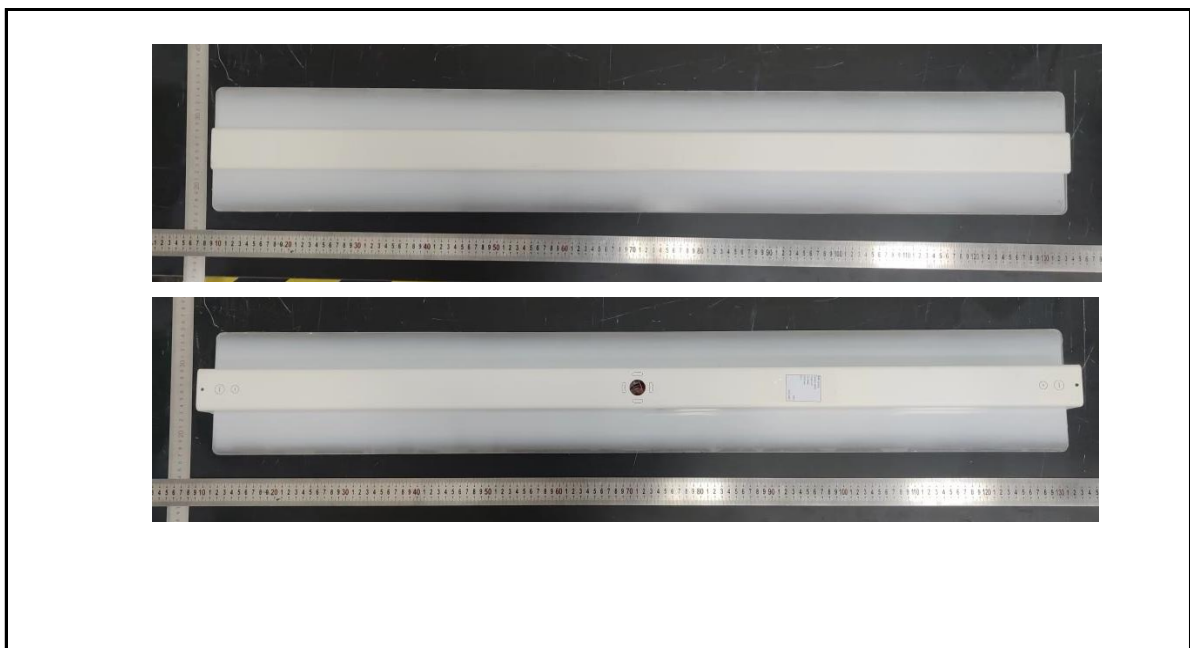
- 1、 This report shall not be used by the client to claim product endorsement by NVLAP, NIST or any agency of the US government.
- 2、 The results reported herein have been performed in accordance with the laboratory's terms of accreditation. This report shall not be reproduced except in full without the written approval of the Laboratory. The results in this report apply to the test sample(s) mentioned above at the time of the testing period only and are not to be used to indicate applicability to other similar products. This report does not imply that the product(s) has met the criteria for certification.

## 3.0 Production Description

**Luminaire Description:** TOMO-4/48W/5000K

**Electrical Specification:** 120V-277V,50/60HZ

### Photos of Luminaire Characteristics



## 4.0 LM-79 Measurement and Test Results

### 4.1 Integrating Sphere Test

Model No.	TOMO-4/48W/5000K	Sample ID.	L1
Operate time (Min.)	90	Stabilization time (Min.)	45
Temperature (°C)	25.3	Humidity (%RH)	56.0

#### Test Method

The samples were tested according to the IES LM-79-2008.

Photometric parameters were measured using an integrating sphere, a spectroradiometer and software. The ambient temperature condition inside the sphere was maintained at  $25^{\circ}\text{C} \pm 1^{\circ}\text{C}$ .

The sample measurements were made using a spectroradiometer connected by a fiber optic cable and detector through the detector port of the integrating sphere.

The voltage of an AC power supply (RMS voltage) or DC power supply (instantaneous voltage) applied to the device under test shall be regulated to within  $\pm 0.2$  percent under load.

The sample was measured using  $4\pi$  geometry and operated at rated voltage and was stabilized before measurement. Chromaticity coordinates, correlated color temperature and color rendering index were calculated from the spectral radiant flux measurements taken at 1 nm intervals over the range of 380 to 780 nm.

#### Test Result

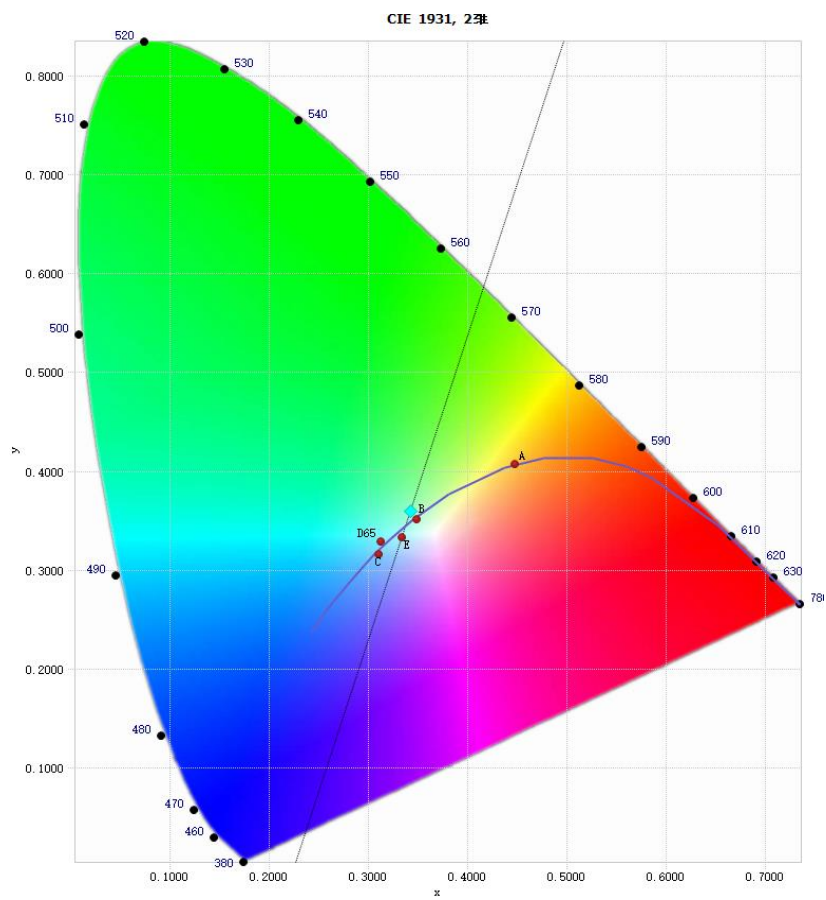
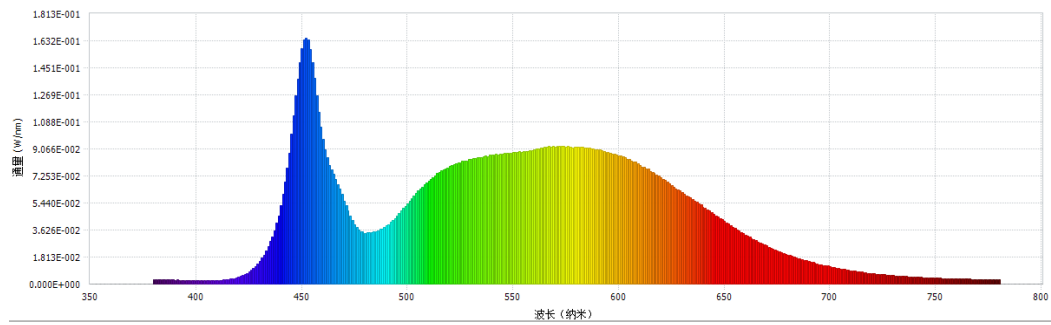
Voltage (Vac)	Frequency (Hz)	Current (A)	Power (W)	Power Factor
119.98	60	0.408	48.8	0.996
276.96	60	0.174	47.8	0.990

#### Test Result

CCT (K)	CRI	R9	Duv
5143	82	2	0.0052

Rf	Rg	IES Rcs,h1
83	95	-13%

## 4.1 Integrating Sphere Test



## 4.1 Integrating Sphere Test

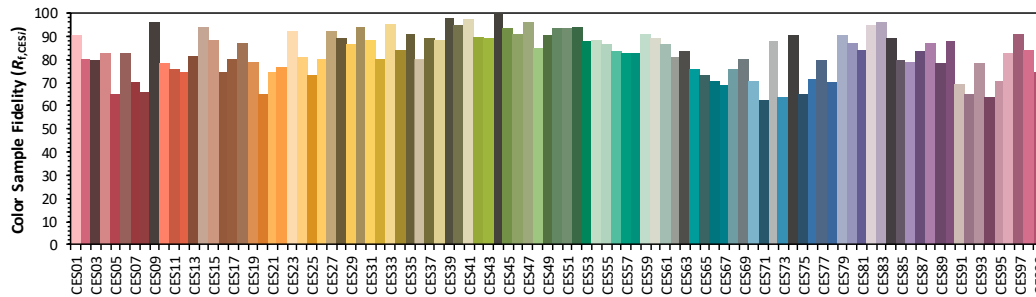
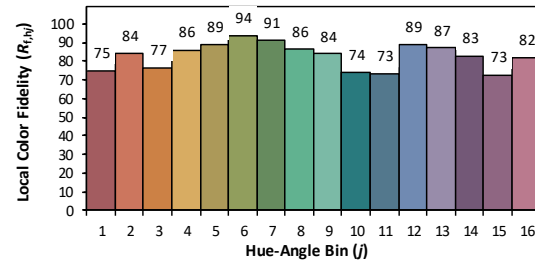
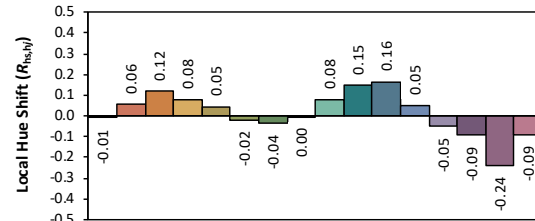
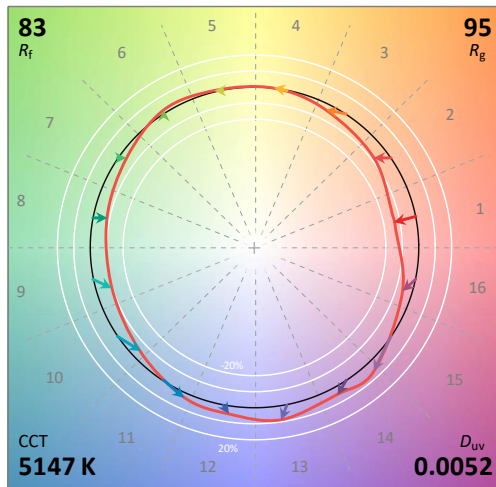
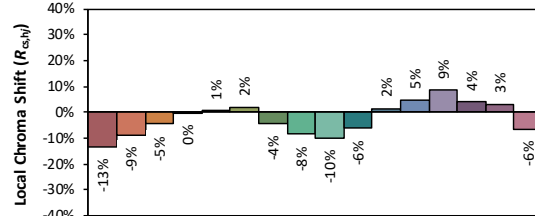
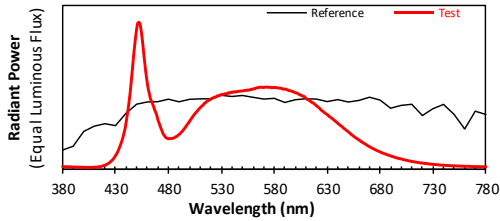
### IES TM-30-18 Color Rendition Report

Source: DLF2207103-12a

Manufacturer: RAB Lighting Inc.

Date: 2022/7/11

Model: TOMO-4/48W/5000K



Notes: This is a recommended method for displaying IES TM-30-18 information.

$x$  0.3418  
 $y$  0.3594  
 $u'$  0.2062  
 $v'$  0.4879

CIE 13.3-1995  
(CRI)

$R_a$  82  
 $R_g$  8

## 4.0 LM-79 Measurement and Test Results

### 4.2 Goniophotometer Test

Model No.	TOMO-4/48W/5000K	Sample ID.	L1
Operate time (Min.)	90	Stabilization time (Min.)	45
Temperature (°C)	25.3	Humidity (%RH)	54.0

#### Test Method

The samples were tested according to the IES LM-79-2008.

Photometric parameters were measured using a type C goniophotometer and software.

The ambient temperature shall be maintained at  $25^{\circ}\text{C} \pm 1^{\circ}\text{C}$ , measured at a point not more than 1 m from the sample and at the same height as the sample.

The voltage of an AC power supply (RMS voltage) or DC power supply (instantaneous voltage) applied to the device under test shall be regulated to within  $\pm 0.2$  percent under load.

The samples were operated at rated voltage and was stabilized before measurement. Luminous flux, luminaire efficacy, zonal lumen were calculated from the software taken at  $0.5^{\circ}$  vertical intervals and  $10^{\circ}$  horizontal intervals.

#### Test Conditions

Condition	Voltage (Vac)	Frequency (Hz)	Current (A)	Power (W)	Power Factor
WROST CASE	120.06	60	0.406	48.6	0.996
NON-WROST CASE	277.00	60	0.175	48.0	0.990

#### Test Result

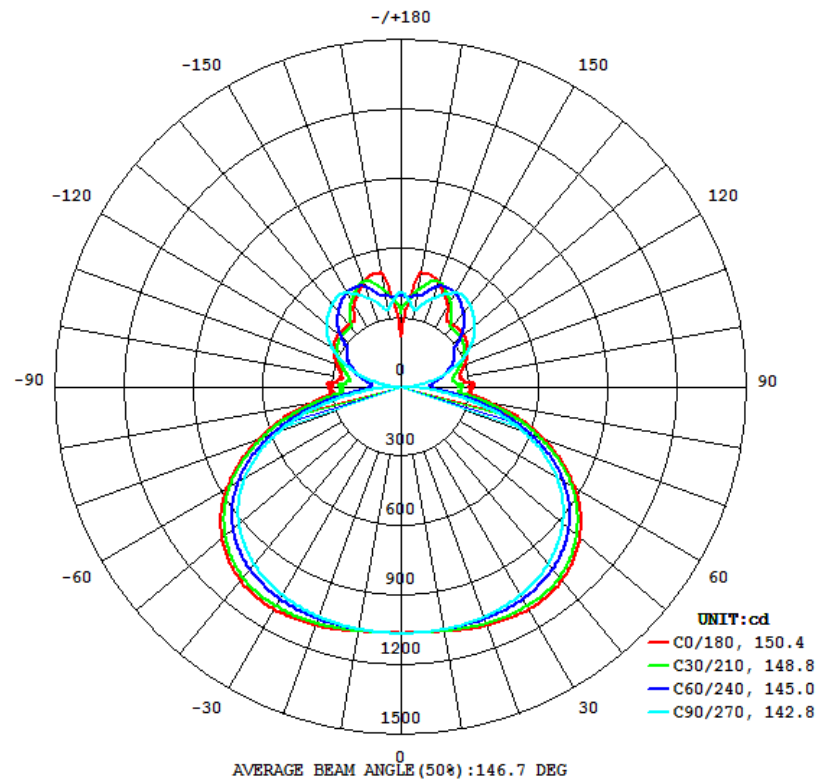
Flux (lm)	Field Angle(10%)		Beam Angle(50%)		Luminous Efficacy (lm/W)
	C0-180	C90-270	C0-180	C90-270	
6603	360.0	360.0	150.4	142.8	135.9

Zonal Lumen Requirement ( $0^{\circ}$ - $60^{\circ}$ )	UGR (X=4H, Y=8H, 70/50/20%)	Length(ft)	Lumen/ft
47.99%	24.1	4.00	1651

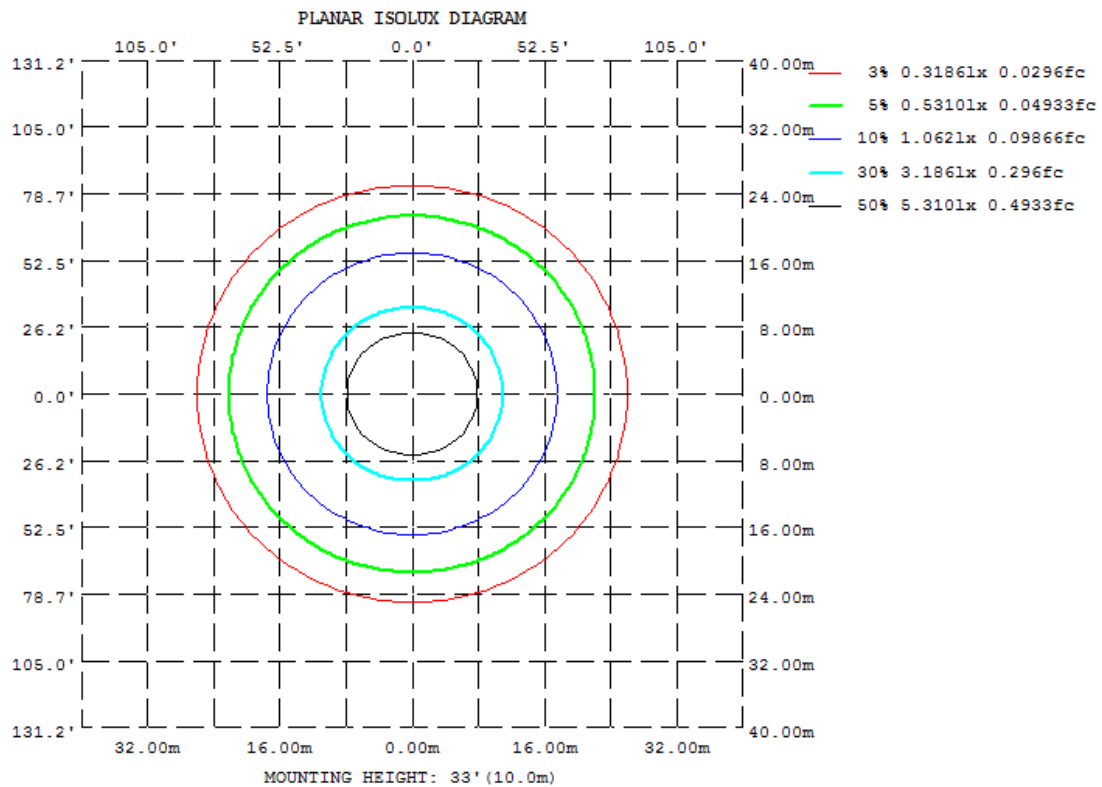


## 4.2 Goniophotometer Test

### Light Distrubtion Curve



### Isolux Plot





## 4.2 Goniophotometer Test

### Zonal Lumen Summary

$\gamma$	C0	C45	C90	C135	C180	C225	C270	C315
10	1072	1066	1063	1066	1072	1066	1063	1066
20	1094	1075	1055	1075	1094	1075	1055	1075
30	1108	1075	1036	1075	1108	1075	1036	1075
40	1088	1049	995.6	1049	1088	1049	995.6	1049
50	1014	978.5	918.8	978.5	1014	978.5	918.8	978.5
60	873.7	839.6	784.5	839.6	873.7	839.6	784.5	839.6
70	660.6	625.1	569.2	625.1	660.6	625.1	569.2	625.1
80	399.4	350.2	274.9	350.2	399.4	350.2	274.9	350.2
90	314.9	215.3	11.09	215.3	314.9	215.3	11.09	215.3
100	267.1	194.1	93.54	194.1	267.1	194.1	93.54	194.1
110	296.3	250.8	233.1	250.8	296.3	250.8	233.1	250.8
120	339.0	300.7	347.4	300.7	339.0	300.7	347.4	300.7
130	357.5	323.3	421.9	323.3	357.5	323.3	421.9	323.3
140	356.0	382.3	467.9	382.3	356.0	382.3	467.9	382.3
150	411.5	453.8	471.0	453.8	411.5	453.8	471.0	453.8
160	484.2	472.4	407.8	472.4	484.2	472.4	407.8	472.4
170	501.7	414.9	344.9	414.9	501.7	414.9	344.9	414.9
180	226.3	371.0	412.5	371.0	226.3	371.0	412.5	371.0
DEG	LUMINOUS INTENSITY:cd							

### UGR Table - Corrected

#### UGR Table - Corrected

Reflectances											
Ceiling Cavity	70	70	50	50	30	70	70	50	50	30	30
Walls	50	30	50	30	30	50	30	50	30	30	30
Floor Cavity	20	20	20	20	20	20	20	20	20	20	20
Room Size		UGR Viewed Crosswise					UGR Viewed Endwise				
X=2H	Y=2H	17.2	18.4	18.0	19.2	20.1	17.8	19.0	18.5	19.7	20.7
	3H	19.5	20.6	20.3	21.4	22.3	20.2	21.3	21.0	22.1	23.0
	4H	20.4	21.4	21.2	22.2	23.2	21.3	22.3	22.0	23.1	24.1
	6H	21.1	22.1	21.9	22.9	23.9	22.3	23.2	23.1	24.0	25.0
	8H	21.3	22.3	22.1	23.1	24.1	22.7	23.6	23.5	24.5	25.4
	12H	21.5	22.4	22.3	23.2	24.2	23.2	24.1	24.0	24.9	25.9
4H	2H	18.1	19.1	18.8	19.9	20.9	18.5	19.5	19.3	20.3	21.3
	3H	20.6	21.5	21.4	22.3	23.3	21.2	22.0	22.0	22.9	23.9
	4H	21.6	22.4	22.4	23.2	24.3	22.4	23.2	23.2	24.0	25.0
	6H	22.4	23.2	23.3	24.0	25.0	23.5	24.3	24.4	25.1	26.1
	8H	22.7	23.4	23.6	24.2	25.3	24.1	24.8	24.9	25.6	26.6
	12H	22.9	23.5	23.8	24.4	25.4	24.7	25.3	25.5	26.1	27.2
8H	4H	22.1	22.8	22.9	23.6	24.7	22.8	23.5	23.6	24.3	25.3
	6H	23.1	23.7	24.0	24.6	25.6	24.1	24.7	25.0	25.6	26.6
	8H	23.5	24.0	24.4	24.9	26.0	24.8	25.3	25.7	26.2	27.3
	12H	23.8	24.3	24.7	25.1	26.2	25.6	26.0	26.5	26.9	28.0
12H	4H	22.2	22.8	23.1	23.7	24.7	22.8	23.4	23.7	24.3	25.3
	6H	23.3	23.8	24.2	24.7	25.8	24.2	24.7	25.1	25.6	26.7
	8H	23.8	24.2	24.7	25.1	26.2	25.0	25.4	25.9	26.3	27.4

Maximum UGR = 28.0

## 4.2 Goniophotometer Test

### ZONAL LUMEN SUMMARY

	Zonal (lm)		Total (lm)	Percent
0-10	101.61	0 - 10	101.61	1.54%
10-20	303.64	0 - 20	405.25	6.14%
20-30	497.70	0 - 30	902.95	13.68%
30-40	667.15	0 - 40	1570.10	23.78%
40-50	783.95	0 - 50	2354.05	35.65%
50-60	814.90	0 - 60	3168.95	47.99%
60-70	726.82	0 - 70	3895.77	59.00%
70-80	511.92	0 - 80	4407.69	66.75%
80-90	256.31	0 - 90	4664.00	70.64%
90-100	199.65	0 - 100	4863.65	73.66%
100-110	227.72	0 - 110	5091.37	77.11%
110-120	279.02	0 - 120	5370.39	81.33%
120-130	301.52	0 - 130	5671.91	85.90%
130-140	291.06	0 - 140	5962.97	90.31%
140-150	263.57	0 - 150	6226.54	94.30%
150-160	212.44	0 - 160	6438.98	97.52%
160-170	126.38	0 - 170	6565.36	99.43%
170-180	37.51	0 - 180	6602.87	100.00%

## 4.2 Goniophotometer Test

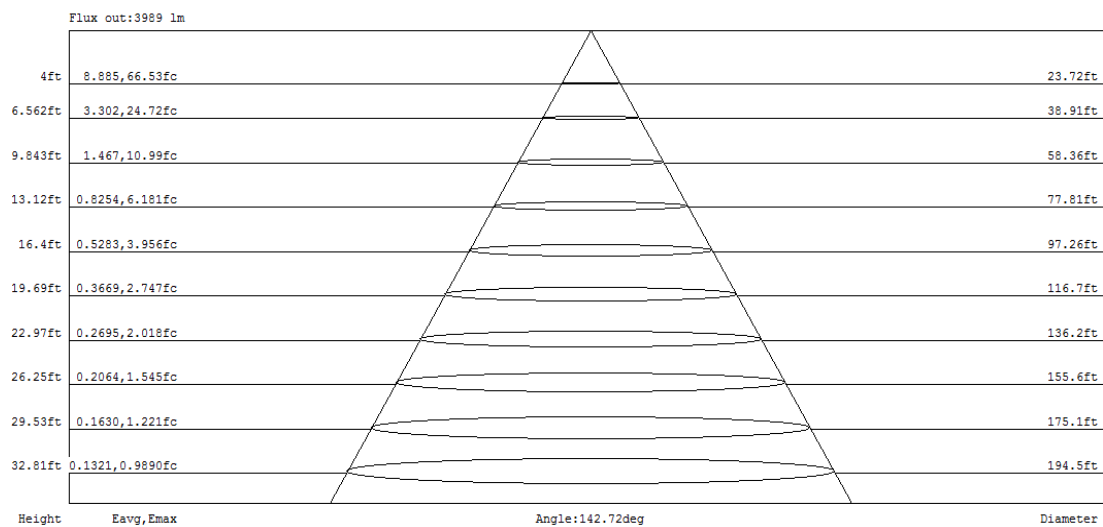
### COEFFICIENTS OF UTILIZATION - ZONAL CAVITY METHOD

#### Coefficients Of Utilization - Zonal Cavity Method

Effective Floor Cavity Reflectance 0.20

RC	80				70				50			30			10			0
RW	70	50	30	10	70	50	30	10	50	30	10	50	30	10	50	30	10	0
0	112	112	112	112	106	106	106	106	95	95	95	85	85	85	75	75	75	71
1	100	95	90	86	95	90	86	82	80	77	74	71	69	66	63	61	59	55
2	90	81	74	68	85	77	70	65	69	63	59	61	57	53	54	51	48	44
3	82	70	62	55	77	67	59	53	59	53	48	53	48	44	47	43	39	36
4	74	62	53	46	69	58	50	44	52	45	40	46	41	36	41	37	33	30
5	68	55	45	39	63	52	43	37	46	39	34	41	35	31	36	32	28	25
6	62	49	40	33	58	46	38	32	41	34	29	37	31	27	33	28	24	21
7	57	44	35	29	54	41	33	27	37	30	25	33	27	23	30	25	21	19
8	53	39	31	25	50	38	30	24	34	27	22	30	25	20	27	22	19	16
9	49	36	28	22	46	34	27	21	31	24	20	28	22	18	25	20	17	14
10	46	33	25	20	43	31	24	19	28	22	18	26	20	16	23	18	15	13

### CONE OF LIGHT DIAGRAM



## 4.0 LM-79 Measurement and Test Results

### 4.3 THD and PF Test

Model No.	TOMO-4/48W/5000K	Sample ID.	L1
Temperature (°C)	25.3	Humidity (%RH)	56.0

#### Test Method

The samples were tested according to the ANSI C82.77:2002.

The total harmonic distortion shall be measured to the 40th order.

The ambient temperature condition was maintained at  $25^{\circ}\text{C} \pm 1^{\circ}\text{C}$ . The sample measurements were made using a digital power meter and power supply. The sample was operated at rated voltage and was stabilized before measurement. The total harmonic distortion were calculated.

#### Test Results

Voltage (Vac)	Frequency (Hz)	Current (A)	Power (W)	Power Factor	THD
119.98	60	0.408	48.8	0.996	6.94%
276.96	60	0.174	47.8	0.990	11.50%

## 5.0 Equipment Information

Test Equipment			
Equipment ID	Equipment Name	Last Calibration Date	Calibration Due Date
DLF107	Integrating Sphere System	2021/12/26	2022/12/25
DLF108	Auxiliary Lamp	2021/12/26	2022/12/25
DLF122	Measurement Standard Lamp Standard Lamp Type: 220 V, 0.4720 A, Tungsten, Omni-derectional	2021/12/26	2022/12/25
DLF116	AC Power Source	2021/12/26	2022/12/25
DLF113	Power Meter	2021/12/26	2022/12/25
DLF112	Temperature Recorder	2021/12/26	2022/12/25
DLF114	Temperature & Humidity Datalogger	2021/12/26	2022/12/25
DLF101	Goniophotometer	2021/12/26	2022/12/25
DLF125	Standard Lamp Standard Lamp Type: 76.58 V, 6.7875 A, Tungsten, Omni-derectional	2021/12/26	2022/12/25
DLF104	AC Power Source	2021/12/26	2022/12/25
DLF507	DC Power Source	2021/12/26	2022/12/25
DLF102	Power Meter	2021/12/26	2022/12/25
DLF111	Temperature & Humidity Datalogger	2021/12/26	2022/12/25
DLF119	Power Meter	2021/12/26	2022/12/25
DLF031	Temperature data logger	2021/12/26	2022/12/25
DLF022	Digital power meter	2021/12/26	2022/12/25
DLF003	Temperature & Humidity Datalogger	2021/12/26	2022/12/25

\*\*\*\*\* End of Test Report\*\*\*\*\*