

## Spectrum Test Report

Sample : 20250411006  
Specification : TOSY  
Sample No. : 1M  
Manufacturer : RAB Lighting INC

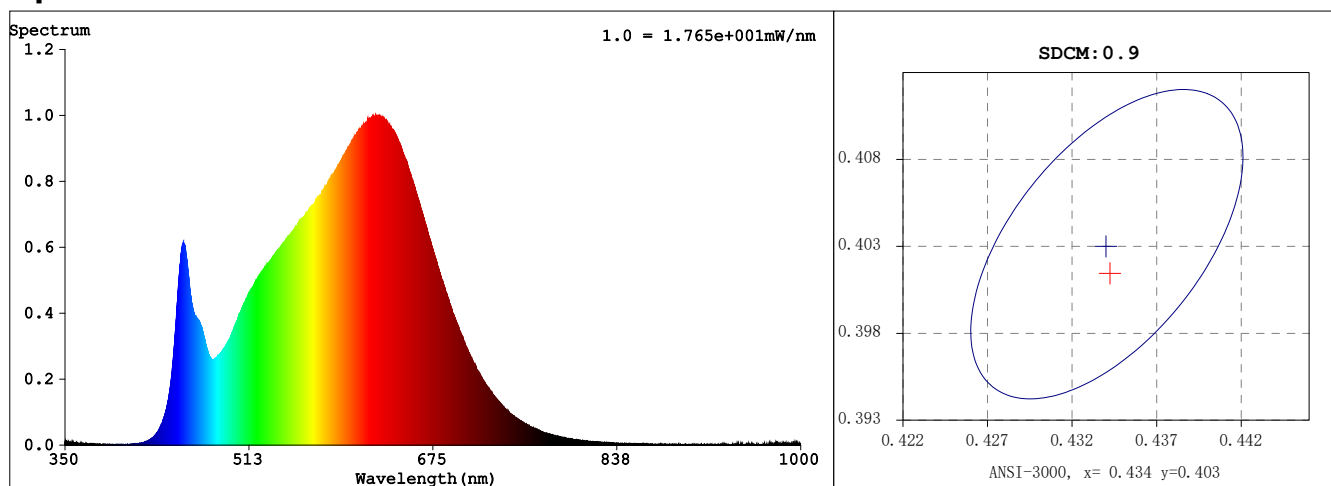
Date : 2025-04-10 15:34:49  
Sam. Status :  
Instrument : HAAS-2000(EVERFINE)  
Test by : JZ  
Assessor : damin

### Test Condition

Temperature : 25.3 °C  
WL Range : 350nm-1000nm  
Test Mode : Fast Test

RH : 65.0%  
IP : 54098 (83%)  
T : 311 ms  
Sensitivity : High

### Spectrum



### Colorimetric Parameters

Chromaticity Coordinate:  $x = 0.4341$   $y = 0.4017$  /  $u' = 0.2498$   $v' = 0.5200$  ( $duv = -5.61e-04$ )  $Dx, Dy = -0.0008, -0.0017$

CCT= 3028K Prcp WL:  $L_d = 582.9\text{nm}$  Purity=50.9%

Peak WL:  $L_p = 624\text{nm}$  FWHM: =163.9nm Ratio:R=24.3% G=72.6% B=3.1%

Render Index:  $R_a = 94.2$  AvgR = 91.6 TM30:Rf=92 Rg=99

R1 =95 R2 =98 R3 =99 R4 =93 R5 =94 R6 =96 R7 =93

R8 =86 R9 =69 R10=93 R11=94 R12=78 R13=96 R14=99 R15=92

LEVEL:OUT WHITE:ANSI\_3000K

TLCI Parameters: TLCI = 94.2

### Photometric & Radiometric Parameters

Flux = 879.09 lm Eff. : 108.12 lm/W  $F_e = 3.1036$  W

Scotopic:1274.9 S/P:1.4502

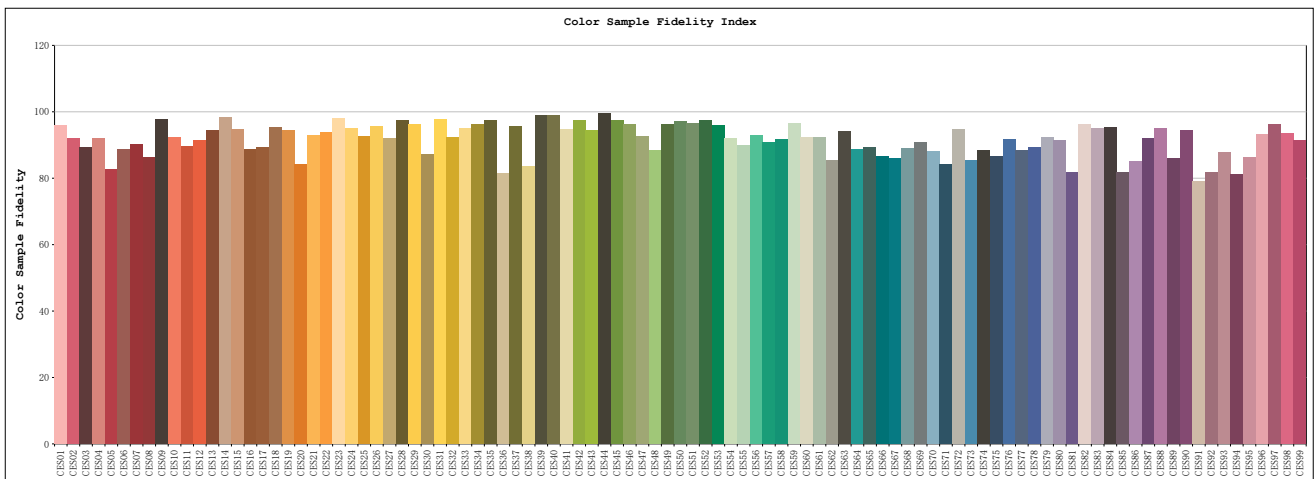
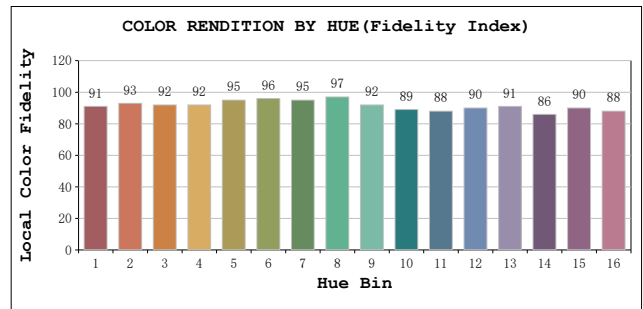
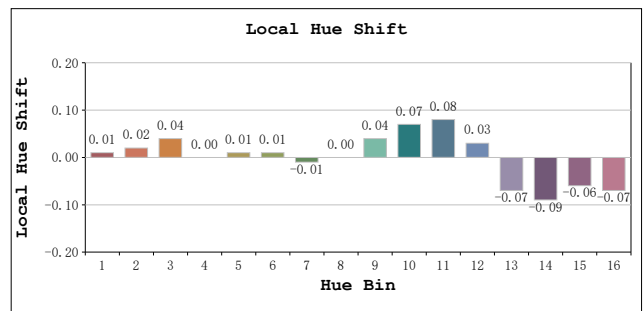
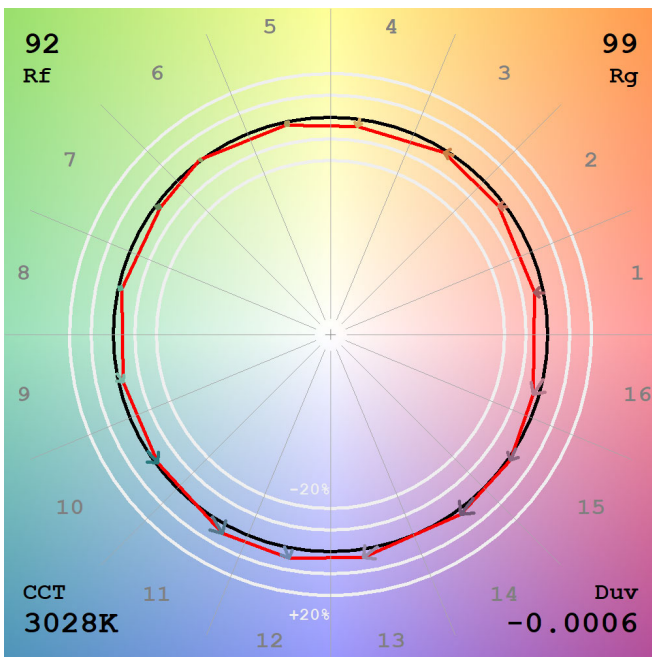
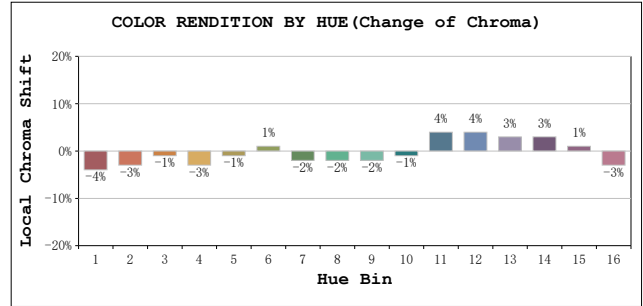
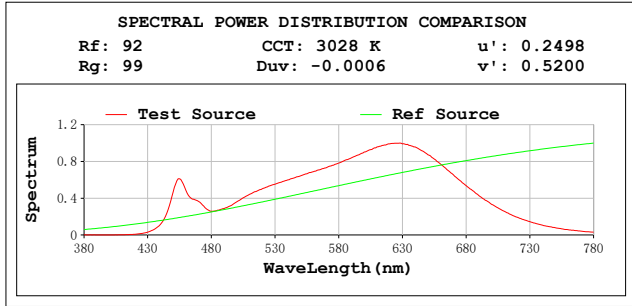
### Electrical parameters

V = 24.00 V I = 0.3388 A P = 8.131 W PF = 1.000

Freq=0.00 Hz

# TM30

View Angle: 2 Deg



**All Rf:**

Rf1 = 96.0	Rf2 = 92.0	Rf3 = 89.3	Rf4 = 92.0
Rf5 = 82.6	Rf6 = 88.6	Rf7 = 90.2	Rf8 = 86.3
Rf9 = 97.9	Rf10 = 92.3	Rf11 = 89.7	Rf12 = 91.5
Rf13 = 94.4	Rf14 = 98.4	Rf15 = 94.8	Rf16 = 88.9
Rf17 = 89.3	Rf18 = 95.5	Rf19 = 94.5	Rf20 = 84.2
Rf21 = 92.9	Rf22 = 93.9	Rf23 = 97.9	Rf24 = 95.2
Rf25 = 92.5	Rf26 = 95.6	Rf27 = 92.0	Rf28 = 97.4
Rf29 = 96.3	Rf30 = 87.2	Rf31 = 97.7	Rf32 = 92.5
Rf33 = 95.2	Rf34 = 96.3	Rf35 = 97.4	Rf36 = 81.4
Rf37 = 95.8	Rf38 = 83.5	Rf39 = 99.0	Rf40 = 98.9
Rf41 = 94.7	Rf42 = 97.4	Rf43 = 94.4	Rf44 = 99.4
Rf45 = 97.4	Rf46 = 96.2	Rf47 = 92.7	Rf48 = 88.3
Rf49 = 96.3	Rf50 = 97.1	Rf51 = 96.4	Rf52 = 97.5
Rf53 = 96.1	Rf54 = 91.9	Rf55 = 90.0	Rf56 = 93.0
Rf57 = 90.9	Rf58 = 91.6	Rf59 = 96.6	Rf60 = 92.3
Rf61 = 92.4	Rf62 = 85.3	Rf63 = 94.2	Rf64 = 88.8
Rf65 = 89.4	Rf66 = 86.7	Rf67 = 86.1	Rf68 = 88.9
Rf69 = 90.7	Rf70 = 88.1	Rf71 = 84.3	Rf72 = 94.6
Rf73 = 85.5	Rf74 = 88.3	Rf75 = 86.7	Rf76 = 91.7
Rf77 = 88.5	Rf78 = 89.3	Rf79 = 92.2	Rf80 = 91.6
Rf81 = 81.8	Rf82 = 96.3	Rf83 = 95.0	Rf84 = 95.4
Rf85 = 81.9	Rf86 = 85.0	Rf87 = 91.9	Rf88 = 95.2
Rf89 = 86.0	Rf90 = 94.3	Rf91 = 79.1	Rf92 = 81.8
Rf93 = 87.9	Rf94 = 81.1	Rf95 = 86.4	Rf96 = 93.1
Rf97 = 96.1	Rf98 = 93.6	Rf99 = 91.3	