

Photometric Test Report

Relevant Standards

- ☒ ANSI/IES LM-79-2019
- ☒ ANSI C82.77-2017

Prepared For

RAB Lighting Inc.

Address: 408 W 14th St New York, NY 10014

Prepared By

Dongguan New Testing Centre Co., Ltd.

Address: 3F No. 1 the 1st North Industry Road, Songshan Lake Science & Technology Park, Dongguan, Guangdong, China

Prepare by:

Alan Wang

Engineer: Alan Wang

Date: 2024-07-24

Review by:

Vincent Yuan

Technical Lead: Vincent Yuan

Issue Date: 2024-07-24

Revised Date: N/A

1.0 Test Summary

DLC Technical Requirements V5.1

Stairwell and Passageway Luminaires					
Requirement Category		Test Method	Requirements		Test Value
Luminaire Output (lm) (Integrating Sphere – Section 4.1)		ANSI/IES LM-79:2019	750		1402
Minimum Luminaire Efficacy (lm/W) (Integrating Sphere – Section 4.1)		ANSI/IES LM-79:2019	Standard	Premium	56.5
			105	120	
Power (Input Wattage) (W) (Integrating Sphere – Section 4.1)		ANSI/IES LM-79:2019	Worst Case		24.8
Total Harmonic Distortion (A%) (THD & PF – Section 4.3)		ANSI C82.77:2002	20.00%	120V	7.90
		ANSI C82-77-10:2020		277V	14.50
Power Factor (THD & PF – Section 4.3)		ANSI C82.77:2002	0.9	120V	0.991
		ANSI C82-77-10:2020		277V	0.895
Allowable CCTs* (K) (Integrating Sphere – Section 4.1)		ANSI/IES LM-79:2019	N/A		Green (Lp=521nm)
Minimum CRI (Integrating Sphere – Section 4.1)		ANSI/IES LM-79:2019 CIE13.3-1995	N/A		-16.3
Minimum R9 (Integrating Sphere – Section 4.1)		ANSI/IES LM-79-2019 CIE13.3-1995	N/A		-352
Minimum Rf (Integrating Sphere – Section 4.1)		ANSI/IES TM-30-18	N/A		N/A
Minimum Rg (Integrating Sphere – Section 4.1)		ANSI/IES TM-30-18	N/A		N/A
IES Rcs,h1 (Integrating Sphere – Section 4.1)		ANSI/IES TM-30-18	N/A		N/A
Zonal Lumen Requirement (0°-90°) (Goniophotometer – Section 4.2)		ANSI/IES LM-79:2019	≥85%		N/A
Backlight, Uplight and Glare (BUG) Ratings (Goniophotometer – Section 4.2)		ANSI/IES LM-79:2019 IES TM-15-11	N/A		N/A
Input Voltage (V)					
(Integrating Sphere – Section 4.1)		ANSI/IES LM-79:2019	Worst Cast		277.0
(Integrating Sphere – Section 4.1)			Non-Worst Case		120.0
Input Current (A)					
(Integrating Sphere – Section 4.1)		ANSI/IES LM-79:2019	Worst Case		0.100
(Integrating Sphere – Section 4.1)			Non-Worst Case		0.201
Power (Input Wattage – W)					
(Integrating Sphere – Section 4.1)		ANSI/IES LM-79:2019	Worst Case		24.8
(Integrating Sphere – Section 4.1)			Non-Worst Case		23.9

2.0 Test List

Test Item	Test	Test Date	Model Number	Build Level	Sample No.
1	Integrating Sphere Test	2024-07-23	VXRGB @26WGREEN	-	240715001-S1
2	Goniophotometer Test	N/A	VXRGB @26WGREEN	-	240715001-S1
3	THD and PF Test	2024-07-23	VXRGB @26WGREEN	-	240715001-S1

Remark (If any):

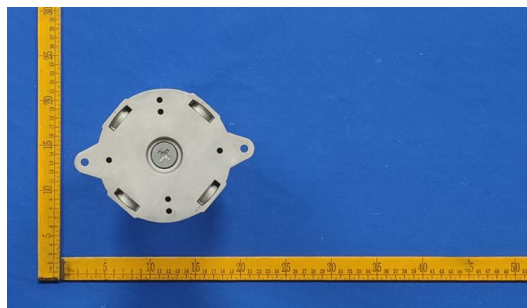
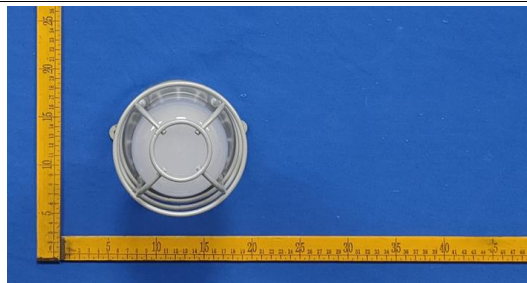
1. The results contained in this report pertain only to the tested samples.
2. This report shall not be reproduced, no limited part or full, without approval of Dongguan New Testing Centre Co., Ltd.
3. This report must not be used by the client to claim product certification, approval, or endorsement by NVLAP, NIST or any agency of the U.S. Government.

3.0 Product Description

Luminaire Description: Model No. VXRGB @26WGREEN.

Electrical Specification: 120-277Vac, 50/60Hz

Photos of Luminaire Characteristics



4.0 LM-79 Measurement and Test Results

4.1 Integrating Sphere Test

Model No.	VXRGB @26WGREEN	Sample ID	240715001-S1
Operate time (Min.)	10	Stabilization time (Min.)	60
Temperature (°C)	25.4	Humidity (%RH)	41.0

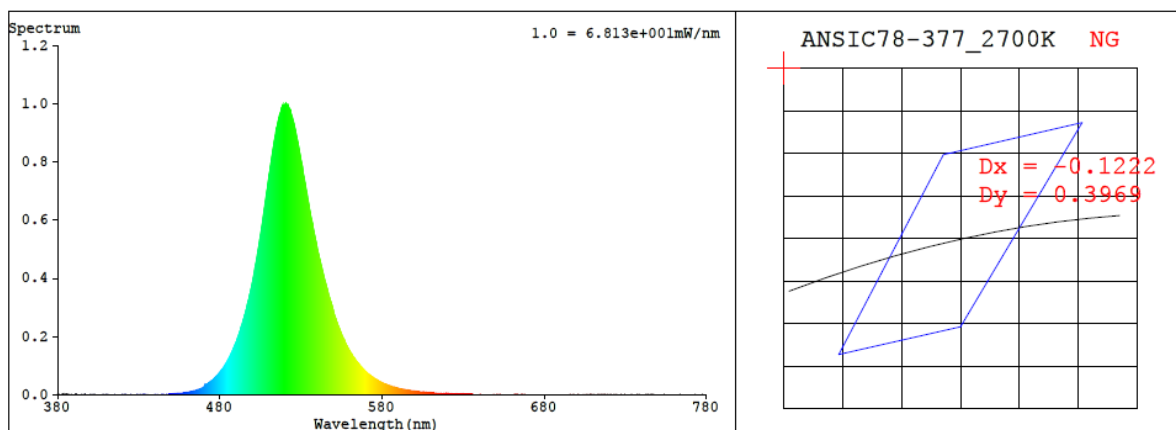
Test Method
<p>The Samples were tested according to the ANSI/IES LM-79:2019.</p> <p>Photometric parameters were measured using an integrating sphere, a spectroradiometer and software. The ambient temperature condition inside the sphere was maintained at 25±1°C.</p> <p>The sample measurements were made using a spectroradiometer connected by a fiber optic cable and detector through the detector port of the integrating sphere.</p> <p>The voltage of an AC power supply (RMS voltage) or DC power supply (instantaneous voltage) applied to the device under test shall be regulated to within ±0.2 percent under load.</p> <p>The sample was measured using 4π geometry and operated at rated voltage and was stabilized before measurement. Chromaticity coordinates, correlated color temperature and color rendering index were calculated from the spectral radiant flux measurements taken at 1 nm intervals over the range of 380 to 780nm.</p>

Test Result

Voltage (Vac)	Frequency (Hz)	Current (A)	Power (W)	Power Factor
120.0	60	0.201	23.9	0.991
277.0	60	0.100	24.8	0.895

CCT (K)	CRI	R9	Duv	Rf	Rg	IES Rcs,h1
Green (Lp=521nm)	-16.3	-352	0.1540	N/A	N/A	N/A

4.1 Integrating Sphere Test



Colorimetric Parameters

Chromaticity Coordinate: $x = 0.1713$ $y = 0.6999$ / $u' = 0.0620$ $v' = 0.5697$ ($duv=1.54e-01$)

CCT= 8181K Prcp WL: Ld=525.2nm Purity=74.5%

Peak WL: Lp=521nm FWHM: =36.7nm Ratio:R=0.3% G=96.5% B=3.2%

Render Index: Ra = -16.3 AvgR = -46.0 TM30:Rf=3 Rg=10

EEL: 0.24067 B

R1 =-32 R2 =-0 R3 =-5 R4 =-56 R5 =-7 R6 =-7 R7 =4

R8 =-27 R9 =-352 R10=-88 R11=-83 R12=-18 R13=-36 R14=48 R15=-31

4.1 Integrating Sphere Test

Spectral Distribution over Visible Wavelength											
WL (nm)	Radiant (W/nm)	WL (nm)	Radiant (W/nm)	WL (nm)	Radiant (W/nm)	WL (nm)	Radiant (W/nm)	WL (nm)	Radiant (W/nm)	WL (nm)	Radiant (W/nm)
380	1.30E-06	447	1.70E-06	514	8.84E-04	581	3.83E-05	648	1.30E-06	715	2.00E-07
381	0.00E+00	448	2.00E-06	515	9.18E-04	582	3.60E-05	649	1.20E-06	716	1.00E-07
382	4.00E-07	449	2.40E-06	516	9.43E-04	583	3.40E-05	650	1.20E-06	717	2.00E-07
383	0.00E+00	450	2.60E-06	517	9.65E-04	584	3.18E-05	651	1.20E-06	718	2.00E-07
384	0.00E+00	451	3.00E-06	518	9.82E-04	585	2.98E-05	652	1.10E-06	719	2.00E-07
385	0.00E+00	452	3.00E-06	519	9.95E-04	586	2.82E-05	653	1.10E-06	720	1.00E-07
386	7.00E-07	453	3.40E-06	520	9.95E-04	587	2.66E-05	654	1.00E-06	721	2.00E-07
387	2.00E-07	454	4.30E-06	521	9.98E-04	588	2.48E-05	655	1.00E-06	722	3.00E-07
388	0.00E+00	455	4.80E-06	522	9.93E-04	589	2.35E-05	656	1.00E-06	723	2.00E-07
389	0.00E+00	456	5.30E-06	523	9.80E-04	590	2.18E-05	657	9.00E-07	724	3.00E-07
390	2.00E-07	457	6.00E-06	524	9.62E-04	591	2.06E-05	658	9.00E-07	725	1.00E-07
391	7.00E-07	458	6.70E-06	525	9.44E-04	592	1.94E-05	659	1.00E-06	726	1.00E-07
392	0.00E+00	459	7.50E-06	526	9.21E-04	593	1.82E-05	660	8.00E-07	727	1.00E-07
393	0.00E+00	460	8.20E-06	527	8.95E-04	594	1.72E-05	661	9.00E-07	728	1.00E-07
394	0.00E+00	461	9.10E-06	528	8.69E-04	595	1.61E-05	662	7.00E-07	729	2.00E-07
395	0.00E+00	462	1.06E-05	529	8.38E-04	596	1.53E-05	663	7.00E-07	730	2.00E-07
396	0.00E+00	463	1.16E-05	530	8.07E-04	597	1.43E-05	664	7.00E-07	731	2.00E-07
397	3.00E-07	464	1.30E-05	531	7.77E-04	598	1.36E-05	665	7.00E-07	732	2.00E-07
398	0.00E+00	465	1.45E-05	532	7.42E-04	599	1.30E-05	666	8.00E-07	733	1.00E-07
399	0.00E+00	466	1.62E-05	533	7.11E-04	600	1.23E-05	667	7.00E-07	734	2.00E-07
400	3.00E-07	467	1.78E-05	534	6.79E-04	601	1.14E-05	668	7.00E-07	735	1.00E-07
401	0.00E+00	468	2.02E-05	535	6.47E-04	602	1.09E-05	669	7.00E-07	736	0.00E+00
402	4.00E-07	469	2.22E-05	536	6.16E-04	603	1.02E-05	670	6.00E-07	737	2.00E-07
403	1.00E-07	470	2.50E-05	537	5.90E-04	604	9.60E-06	671	6.00E-07	738	2.00E-07
404	0.00E+00	471	3.29E-05	538	5.58E-04	605	9.00E-06	672	6.00E-07	739	0.00E+00
405	0.00E+00	472	3.64E-05	539	5.30E-04	606	8.70E-06	673	6.00E-07	740	1.00E-07
406	0.00E+00	473	4.00E-05	540	5.03E-04	607	8.30E-06	674	6.00E-07	741	1.00E-07
407	2.00E-07	474	4.38E-05	541	4.80E-04	608	7.80E-06	675	5.00E-07	742	2.00E-07
408	0.00E+00	475	4.82E-05	542	4.54E-04	609	7.60E-06	676	7.00E-07	743	2.00E-07
409	0.00E+00	476	5.30E-05	543	4.31E-04	610	7.20E-06	677	6.00E-07	744	1.00E-07
410	3.00E-07	477	5.82E-05	544	4.08E-04	611	6.80E-06	678	5.00E-07	745	2.00E-07
411	3.00E-07	478	6.39E-05	545	3.85E-04	612	6.70E-06	679	5.00E-07	746	2.00E-07
412	1.00E-07	479	7.04E-05	546	3.65E-04	613	6.20E-06	680	5.00E-07	747	1.00E-07
413	0.00E+00	480	7.68E-05	547	3.44E-04	614	5.80E-06	681	5.00E-07	748	1.00E-07
414	0.00E+00	481	8.38E-05	548	3.24E-04	615	5.50E-06	682	4.00E-07	749	1.00E-07
415	3.00E-07	482	9.12E-05	549	3.06E-04	616	5.20E-06	683	4.00E-07	750	0.00E+00
416	0.00E+00	483	9.97E-05	550	2.88E-04	617	4.80E-06	684	5.00E-07	751	1.00E-07
417	0.00E+00	484	1.08E-04	551	2.66E-04	618	4.80E-06	685	4.00E-07	752	2.00E-07
418	0.00E+00	485	1.19E-04	552	2.50E-04	619	4.60E-06	686	5.00E-07	753	1.00E-07
419	0.00E+00	486	1.30E-04	553	2.34E-04	620	4.30E-06	687	4.00E-07	754	2.00E-07
420	3.00E-07	487	1.41E-04	554	2.20E-04	621	4.00E-06	688	3.00E-07	755	1.00E-07
421	0.00E+00	488	1.54E-04	555	2.06E-04	622	3.80E-06	689	4.00E-07	756	0.00E+00
422	3.00E-07	489	1.67E-04	556	1.93E-04	623	3.70E-06	690	4.00E-07	757	1.00E-07
423	1.00E-07	490	1.80E-04	557	1.83E-04	624	3.50E-06	691	5.00E-07	758	0.00E+00
424	0.00E+00	491	1.95E-04	558	1.70E-04	625	3.30E-06	692	4.00E-07	759	2.00E-07
425	2.00E-07	492	2.11E-04	559	1.60E-04	626	3.20E-06	693	4.00E-07	760	1.00E-07
426	0.00E+00	493	2.30E-04	560	1.50E-04	627	3.00E-06	694	3.00E-07	761	0.00E+00
427	0.00E+00	494	2.48E-04	561	1.40E-04	628	3.00E-06	695	3.00E-07	762	1.00E-07
428	0.00E+00	495	2.67E-04	562	1.31E-04	629	2.70E-06	696	2.00E-07	763	2.00E-07
429	3.00E-07	496	2.88E-04	563	1.24E-04	630	2.70E-06	697	4.00E-07	764	2.00E-07
430	2.00E-07	497	3.12E-04	564	1.16E-04	631	2.50E-06	698	2.00E-07	765	1.00E-07
431	4.00E-07	498	3.35E-04	565	1.09E-04	632	2.40E-06	699	3.00E-07	766	0.00E+00
432	1.00E-07	499	3.60E-04	566	1.02E-04	633	2.30E-06	700	3.00E-07	767	1.00E-07
433	2.00E-07	500	3.88E-04	567	9.54E-05	634	2.30E-06	701	3.00E-07	768	0.00E+00
434	4.00E-07	501	4.17E-04	568	8.96E-05	635	2.20E-06	702	4.00E-07	769	1.00E-07
435	2.00E-07	502	4.49E-04	569	8.40E-05	636	2.00E-06	703	3.00E-07	770	1.00E-07
436	4.00E-07	503	4.80E-04	570	7.86E-05	637	2.10E-06	704	2.00E-07	771	1.00E-07
437	6.00E-07	504	5.15E-04	571	7.37E-05	638	2.00E-06	705	6.00E-07	772	1.00E-07
438	5.00E-07	505	5.50E-04	572	6.89E-05	639	1.80E-06	706	2.00E-07	773	3.00E-07
439	4.00E-07	506	5.85E-04	573	6.48E-05	640	1.90E-06	707	4.00E-07	774	0.00E+00
440	8.00E-07	507	6.25E-04	574	6.04E-05	641	1.60E-06	708	3.00E-07	775	1.00E-07
441	5.00E-07	508	6.64E-04	575	5.66E-05	642	1.50E-06	709	2.00E-07	776	2.00E-07
442	1.00E-06	509	7.03E-04	576	5.34E-05	643	1.50E-06	710	1.00E-07	777	1.00E-07
443	9.00E-07	510	7.44E-04	577	5.00E-05	644	1.60E-06	711	3.00E-07	778	2.00E-07
444	1.20E-06	511	7.81E-04	578	4.67E-05	645	1.50E-06	712	1.00E-07	779	0.00E+00
445	1.30E-06	512	8.18E-04	579	4.37E-05	646	1.40E-06	713	3.00E-07	780	0.00E+00
446	1.70E-06	513	8.53E-04	580	4.07E-05	647	1.30E-06	714	3.00E-07	N/A	N/A

4.0 LM-79 Measurement and Test Results

4.3 THD and PF Test

Model No.	VXRGB @26WGREEN	Sample ID	240715001-S1
Temperature (°C)	25.4	Humidity (%RH)	41.0

Test Method
<p>The samples were tested according to the and Ansi C82.77: 2002 and ANSI C82.77-10:2020</p> <p>The total harmonic distortion shall be measured to the 40th order.</p> <p>The ambient temperature shall be maintained at $25 \pm 1^{\circ}\text{C}$. The sample measurements were made using a digital power meter and power supply. The sample was operated at rated voltage and was stabilized before measurement. The total harmonic distortion was calculated.</p>

Test Results

Voltage (Vac)	Frequency (Hz)	Current (A)	Power (W)	Power Factor	iTHD(%)
120.0	60	0.201	23.9	0.991	7.90
277.0	60	0.100	24.8	0.895	14.50

5.0 Equipment List:

Equipment ID	Equipment Name	Last Cal.	Due Cal.
NTC-F01-001	Goniophotometer System	2023-11-08	2024-11-07
NTC-F01-006	2.0 meter Integrating Sphere	2023-11-08	2024-11-07
NTC-F01-012	Standard Lamp	2023-11-02	2024-11-01
NTC-F01-013	Standard Lamp	2023-11-02	2024-11-01
NTC-F01-031	Digital Power Meter	2023-08-25	2024-08-24
NTC-F01-019	Temperature & Humidity Meter	2023-11-06	2024-11-05

*****End of Report*****